



Overview of the Florida Paddling Trails Association (FPTA)



Dorsey DeMaster
President, FPTA





- The “CT”
- Florida Paddling Trails Association (FPTA)

The Florida Circumnavigational Saltwater Paddling Trail (“CT”)

- **2005:**
 - The Circumnavigational Saltwater Paddling Trail (or “CT”) was officially designated by the Florida Legislature as part of the Florida Greenways and Trails System (Title XVIII, Chapter 260 Florida Statutes)
- **2007:**
 - Scouting of the 1,515-mile CT completed by FL DEP/OGT (Doug Alderson)
 - U.S. Department of Interior designated the CT





Florida Paddling Trails Association (FPTA)



- **October 2007:**
 - Florida DEP/OGT established FPTA as stewards of the CT



Presenter: Dorsey DeMaster



The “CT”



- Official start/end locations
 - Big Lagoon State Park
 - Ft. Clinch State Park
- Counter or clockwise
- Two ways to kayak the CT:
 1. 'Through paddle' (3-4 months)
 2. 'Section paddle' (23 months +++)
- Diverse environments/experiences
 - Sugar sand/Panhandle → remote beauty/Big Bend & Everglades
→ turquoise waters/Keys → ever-growing cities/Florida





The CT:



- 38 Completed the CT
 - **31 Men - 7 Women**
 - Shortest: **44 days**
 - Longest: **13 yrs, 9 mo, 27 days**
 - Oldest: **73 yrs old**
 - 1-person: **2X** (Section & Through Paddler)
- 13 “Registered” in the process

- **MISSION #1: Develop and Maintain Water Trails**

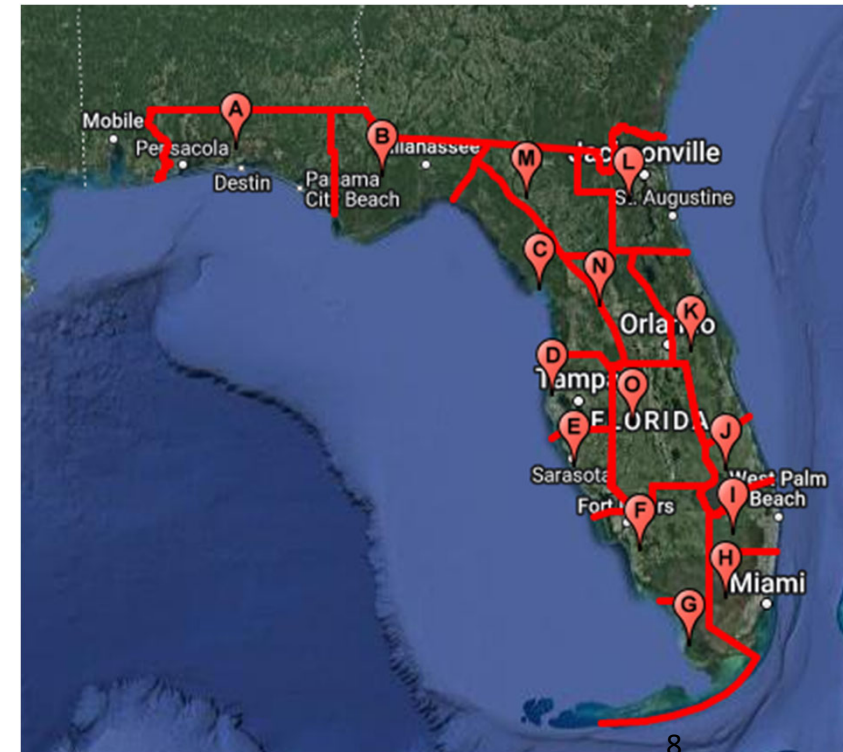


- **1,515-mile CT**
 - **Primitive campsites, state & county parks, lodging**

- **MISSION #1: Develop and Maintain Water Trails**



- **11,000+ miles of mapped/documentated water trails**
- ***How Do We Do It?***



Florida Paddling Trails Association

- Our Team: 100+ Volunteers!



Presenter: Dorsey DeMaster



- Requires coordination (relationships) with State, county, and private agencies



Steve Cournoyer (left) working with the South Florida Water Management District on the Kissimmee River.





VOLUNTEERS: A Network of Dedicated Trail Angels...



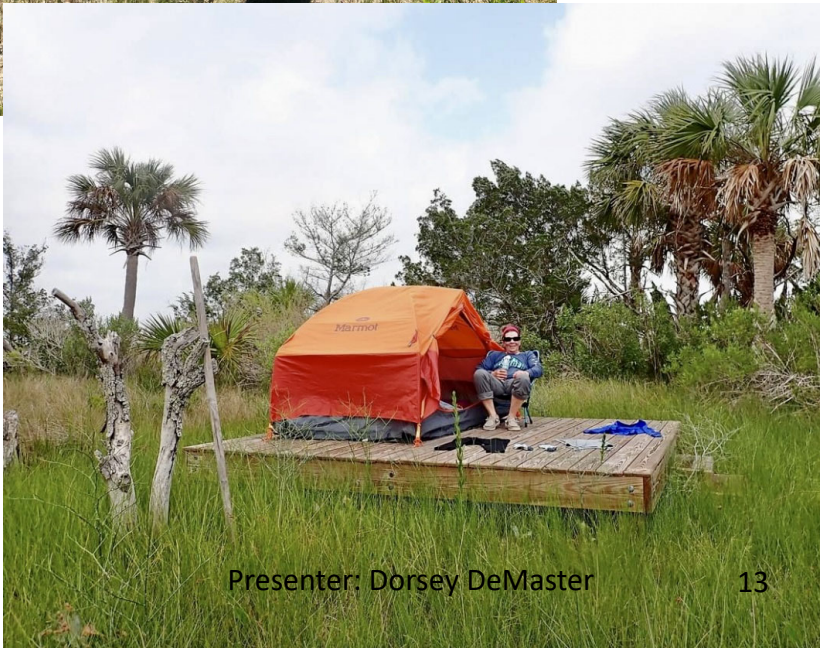
Presenter: Dorsey DeMaster



...and Hard Working Trail Keepers



Presenter: Dorsey DeMaster



Presenter: Dorsey DeMaster

Florida Paddling Trails Association

• MISSION #2: Protect the Environment Along the Trails

- Facilitate statewide cleanups of rivers, lakes, springs, and coastal waterways.
- Offer environmental training to paddlers.
- Partner with organizations committed to stewardship of Florida waters.



Presenter: Dorsey DeMaster

- **MISSION #3: Serve as a Resource & Voice for Paddlers**

- **FPTA represents paddlers at state & local government advisory groups/meetings.**

- **Input from “experienced paddlers” often saves time/money on projects, kayak launch installations, etc.**





- **MISSION #3: Serve as a Resource & Voice for Paddlers**

FPTA Website Rocks!



- Provides information that paddlers need to plan their activities.
- 11,000 miles of documented paddling trails

Bradford Brook Trail



Info Sheet

Lafayette Heritage Prairie
Lake Loop



Info Sheet

KMZ

Lafayette Heritage Lake Trail



Info Sheet

KMZ

Lost Creek Trail



Info Sheet

KMZ



FPTA Store:

- Purchases support FPTA -> FPTA supports passionate paddlers like YOU!

Out Best Selling Shirts!



Florida Waterways
Performance Tee



Sunset Kayaker
Performance Tee



Big Bend Saltwater
Paddling Trail Tee



Florida Keys Performance
Tee

Just Released!

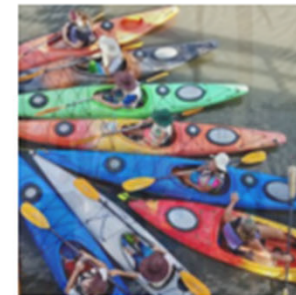


Florida
Circumnavigational
Saltwater Paddling Trail
Guide (Text Only): Eighth
Edition



FPTA Membership

from \$20.00



Donate

from \$10.00

Presenter: Dorsey DeMaster



- **MISSION #4: Promote Paddling Safety & Education**
- **Legacy Fund: FPTA partners with Youth Educators to develop the next generation of paddlers and waterways stewards**





Summary



- The “CT”
- Florida Paddling Trails Association (FPTA)
- Website: www.floridapaddlingtrails.com
- Email: dorsey.demaster@hotmail.com

Thank You!



Want to Comment?



Zoom:

- If you're participating via Zoom – use the Raise Hand feature

Phone:

- If you're participating via Phone –
 - *9 Raises Hand
 - *6 Mutes/Unmutes

Thank You!

Ducks Unlimited Florida Conservation Update



Jeff Beal

Regional Biologist

South Atlantic Field Office-Florida



Ducks Unlimited Mission

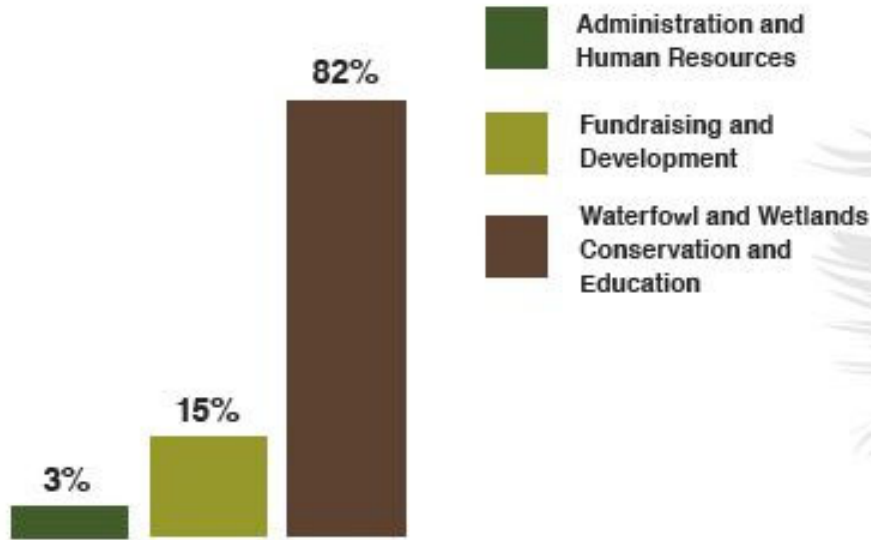
- Created in 1937 to advocate for North American waterfowl populations
- World leader in wetland conservation (acquisition and restoration)
- Wetlands America Trust (land trust)
- ‘to conserve and restore wetlands and associated habitats for the benefit of waterfowl, other wildlife, and people’
- Team of biologists, surveyors, engineers, fundraising, research
- >1,000,000 volunteer members worldwide





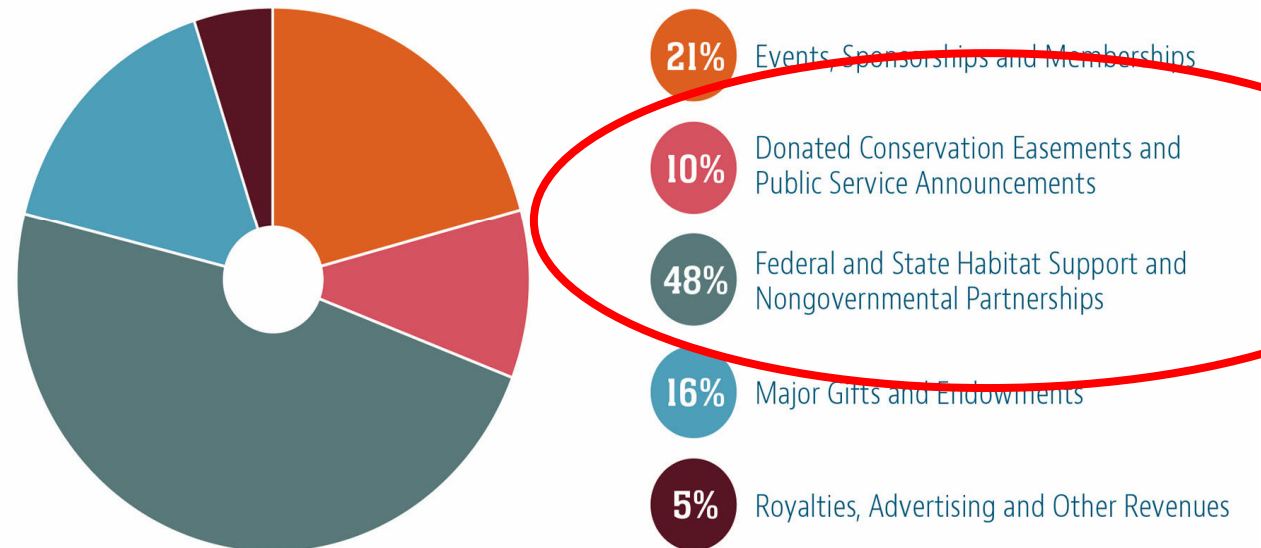
Show me the money...

Financials



WHERE YOUR DU DOLLAR GOES

Sources of Support and Revenue





15 m

DU
(as

-
-
-

\$250 conserves 1 acre

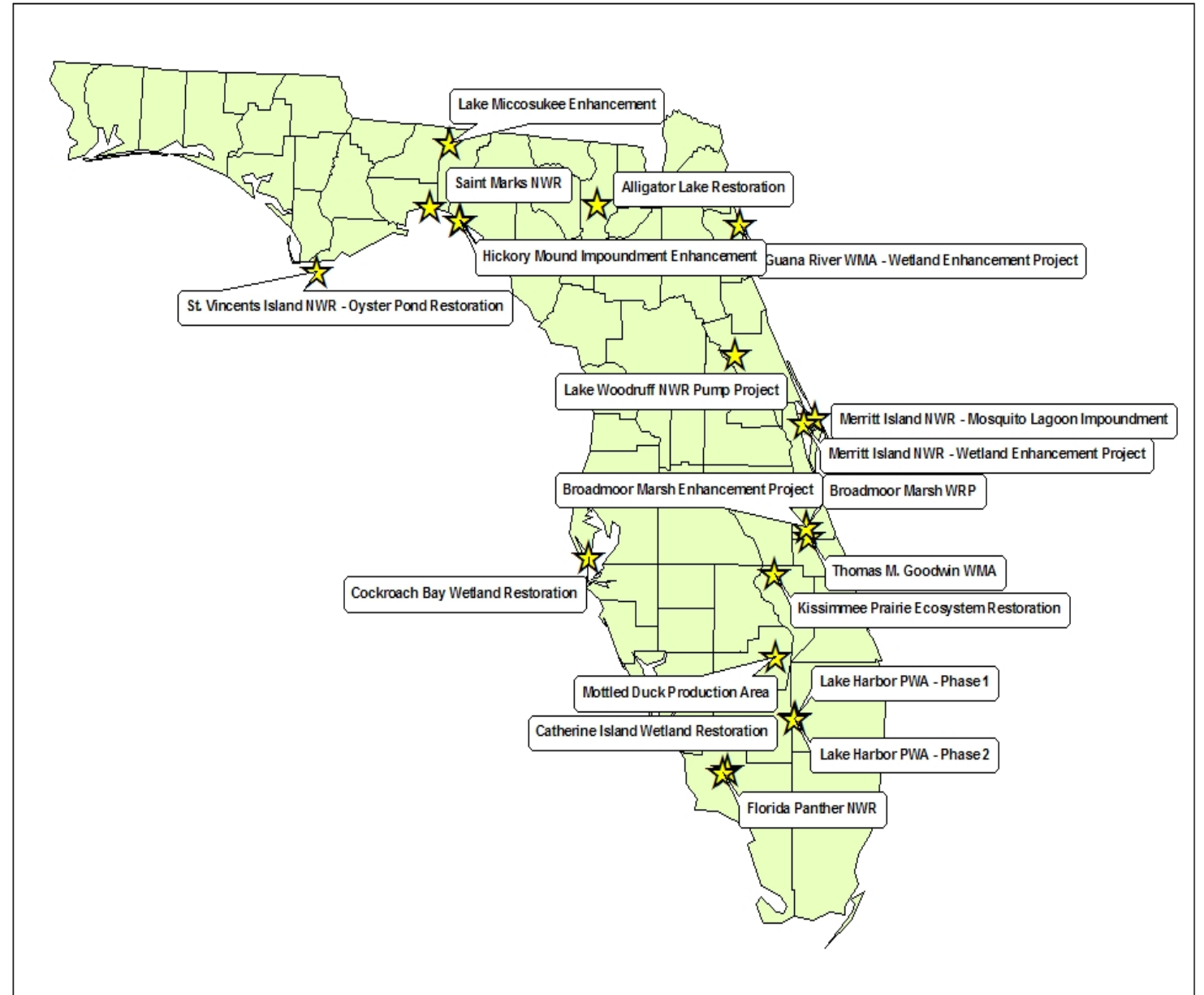
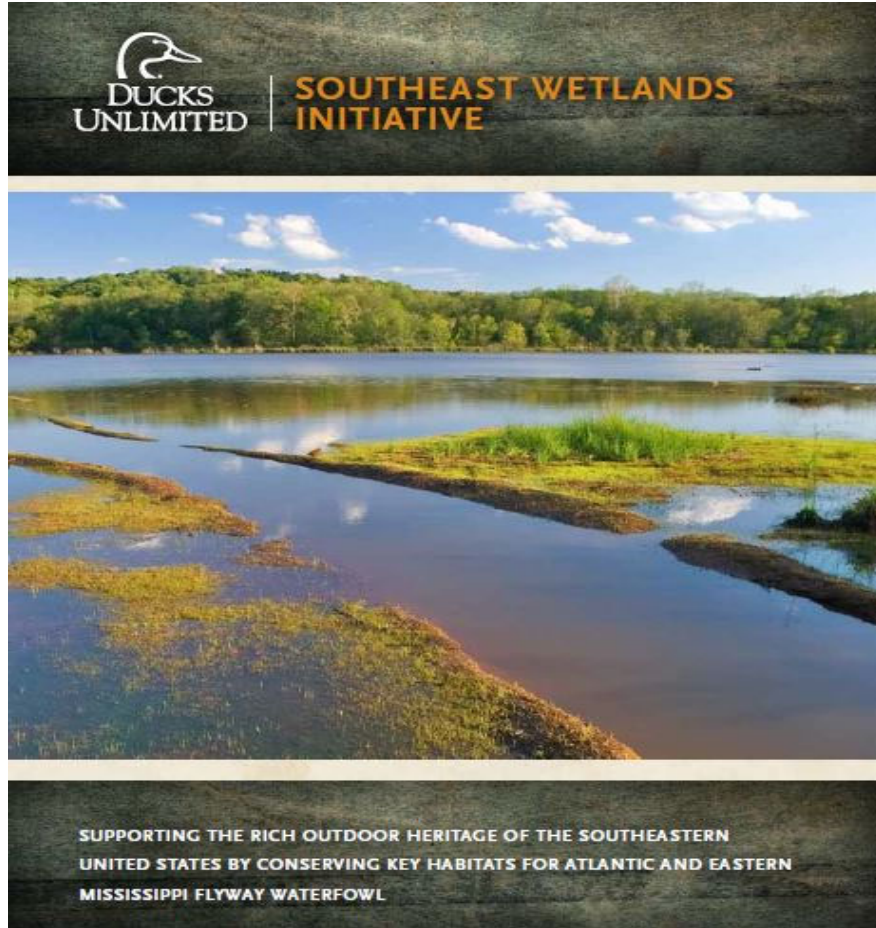


Florida



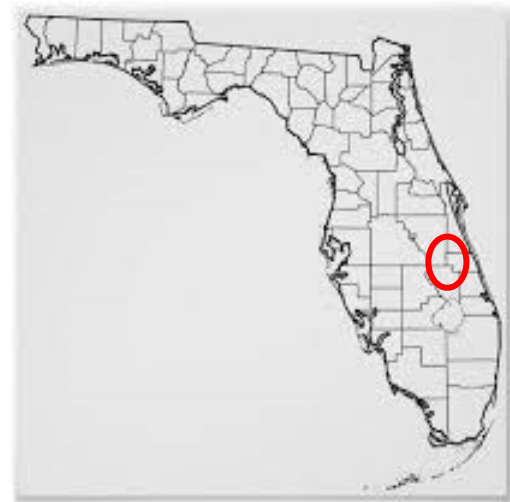
Data Current as of December 31, 2020

DU Florida Legacy





Goodwin/Broadmoor WMA



JAN 8 2002

Coastal Wetlands

Hydrological Restoration of the North Fork St. Lucie River and Ten Mile Creek

2010 Needs Update

Prepared by Laura Herren¹, Brian Sharpe¹, Jeff Beal², Dr. John Tucker³, and Cecilia Conrad⁴

- Florida Department of Environmental Protection, Office of Coastal and Aquatic Managed Areas, Indian River Lagoon Aquatic Preserves
- Florida Fish and Wildlife Conservation Commission, Marine and Estuarine Subsection, 5600 US 1 N, Fort Pierce, FL 34946
- St. Lucie County Mosquito Control District, 3150 Will Fee Road, Fort Pierce, FL 34982
- South Florida Water Management District, 3301 Gun Club Road, West Palm Beach, FL 33416



North Fork St. Lucie River– Oxbow reconnection
Strazulla Parcel

1919 pre-dredge
rivercourse

Breach Location

Sunrise Boulevard

Strazulla Oxbow reconnection before



immediately after



years after



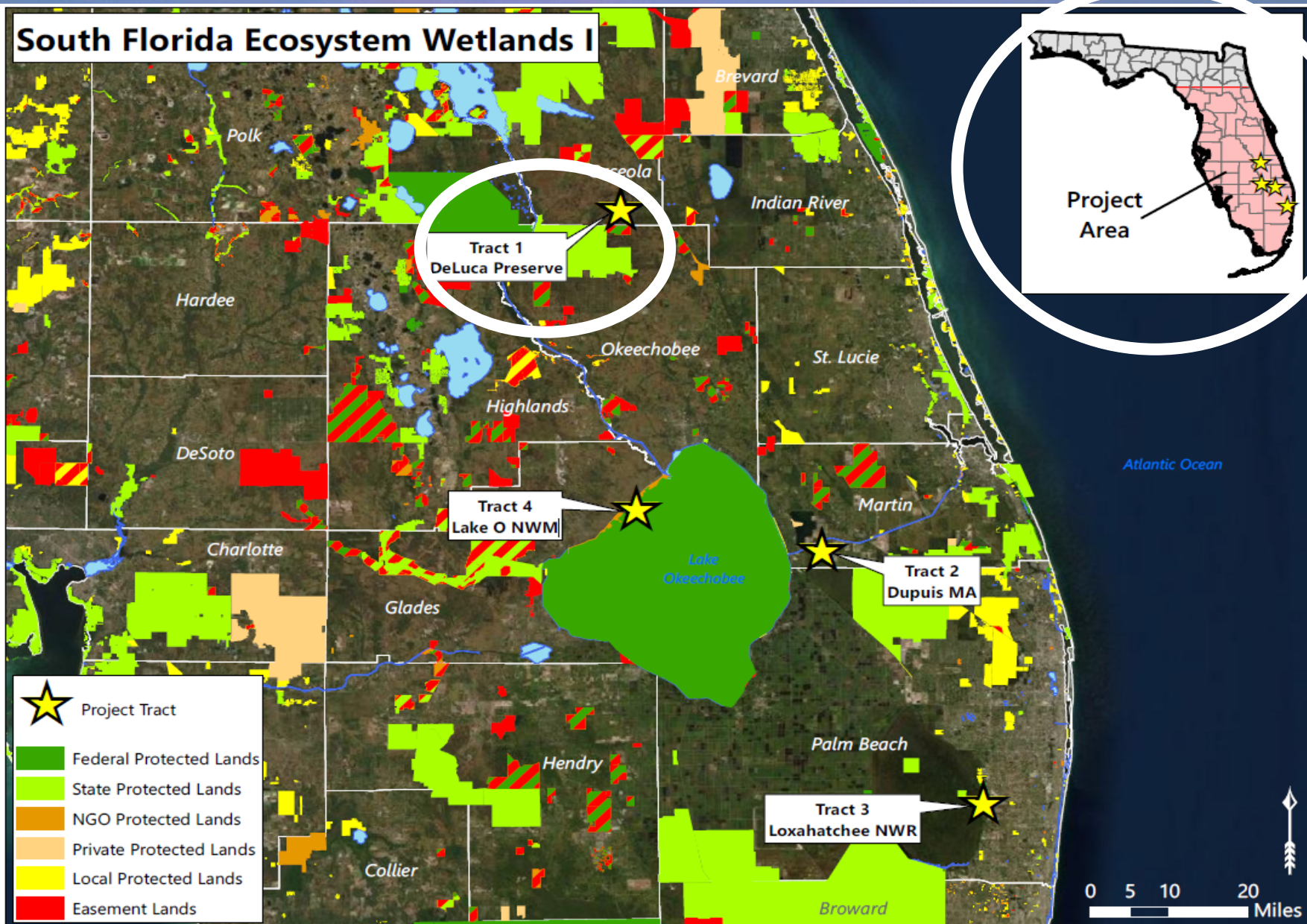
NAWCA Projects Funded

2:1 Budget

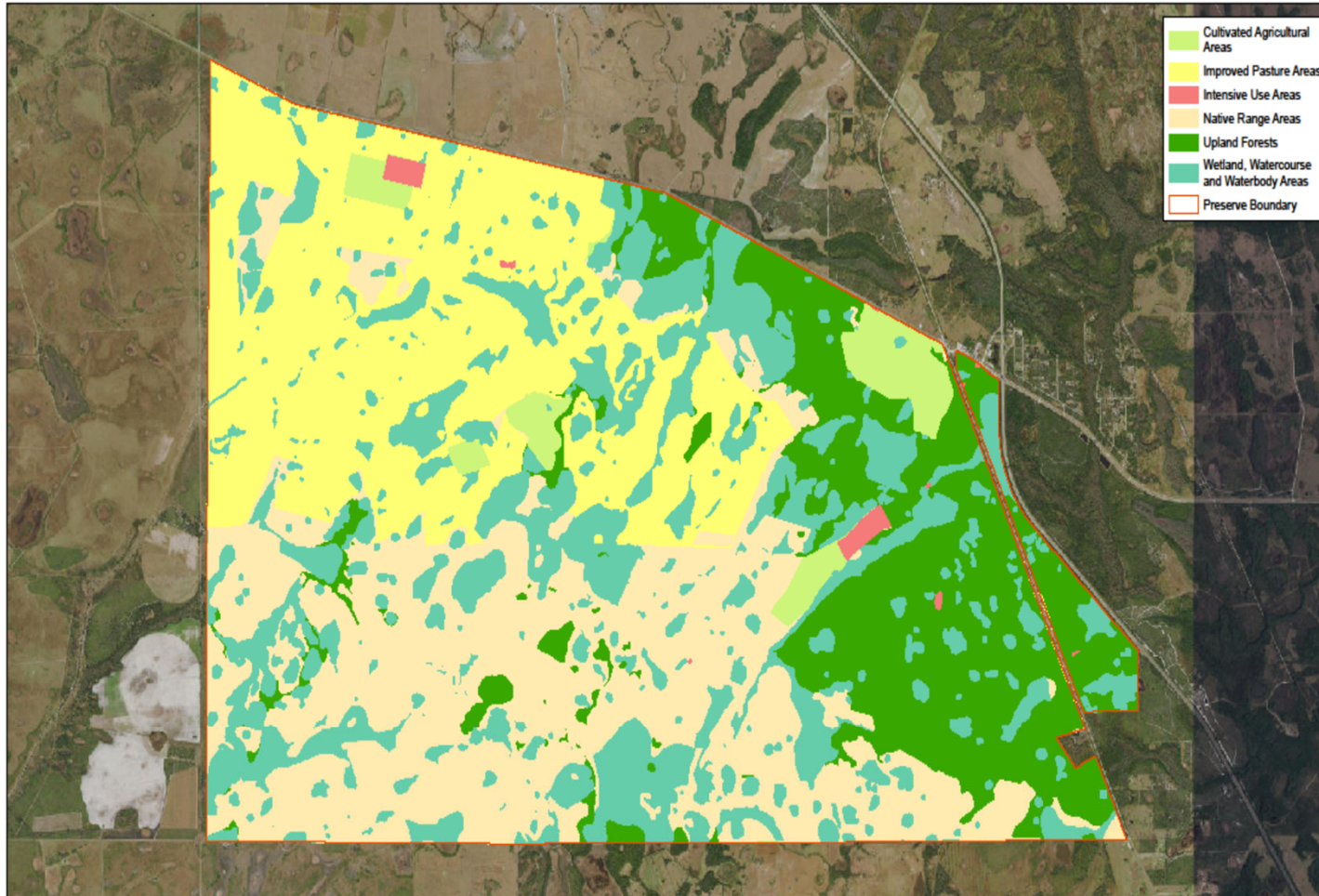
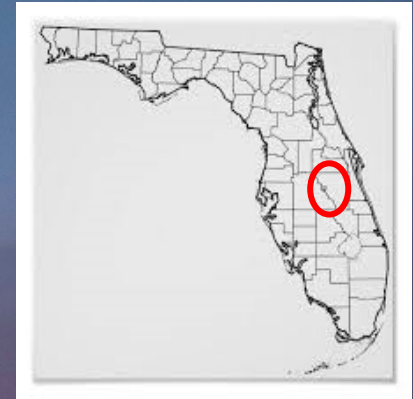
SFEW:
South FL
Ecosystem
Wetlands

\$3M max

Partners:
FWC
SFWMD
USFWS
ENP
Counties



DeLuca Preserve



Wetland/Waterbody (6,677 acres)
Upland Forests (5,339 acres)
Cultivated Agricultural (811 acres)
Native Range (7,417 acres)
Improved Pasture (6,593 acres)
Intensive Use (109 acres)
Total= 26,946 acres

Land Value....\$90M...

Match for NAWCA funds

**Wetlands America Trust Land Use Categories on the
DeLuca Preserve, Osceola County, Florida**



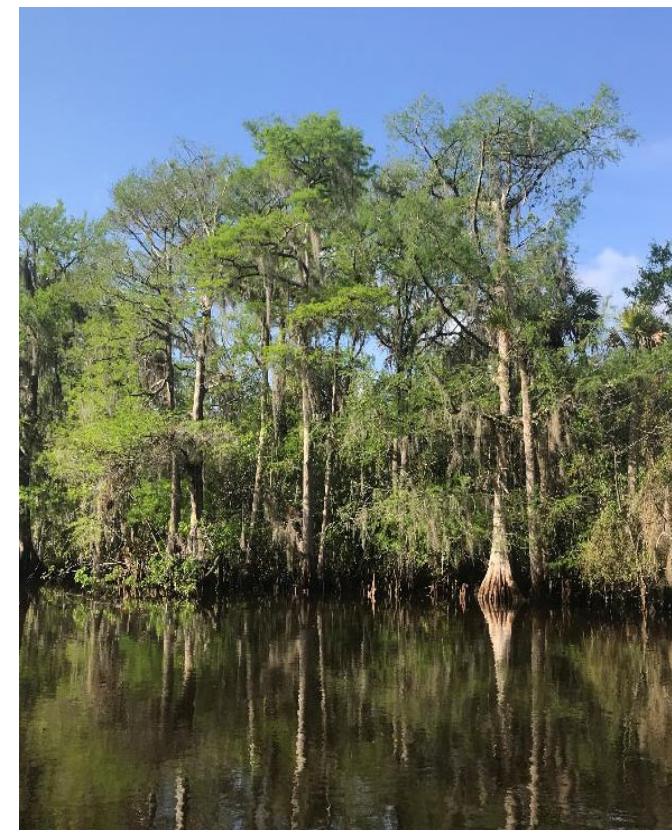
Notes:

Project: DeLuca Properties Date: 9/3/2020 Author: CGG
Projection: Projection: NAD83 StatePlane Florida East HARN

1 inch = 4,500 feet



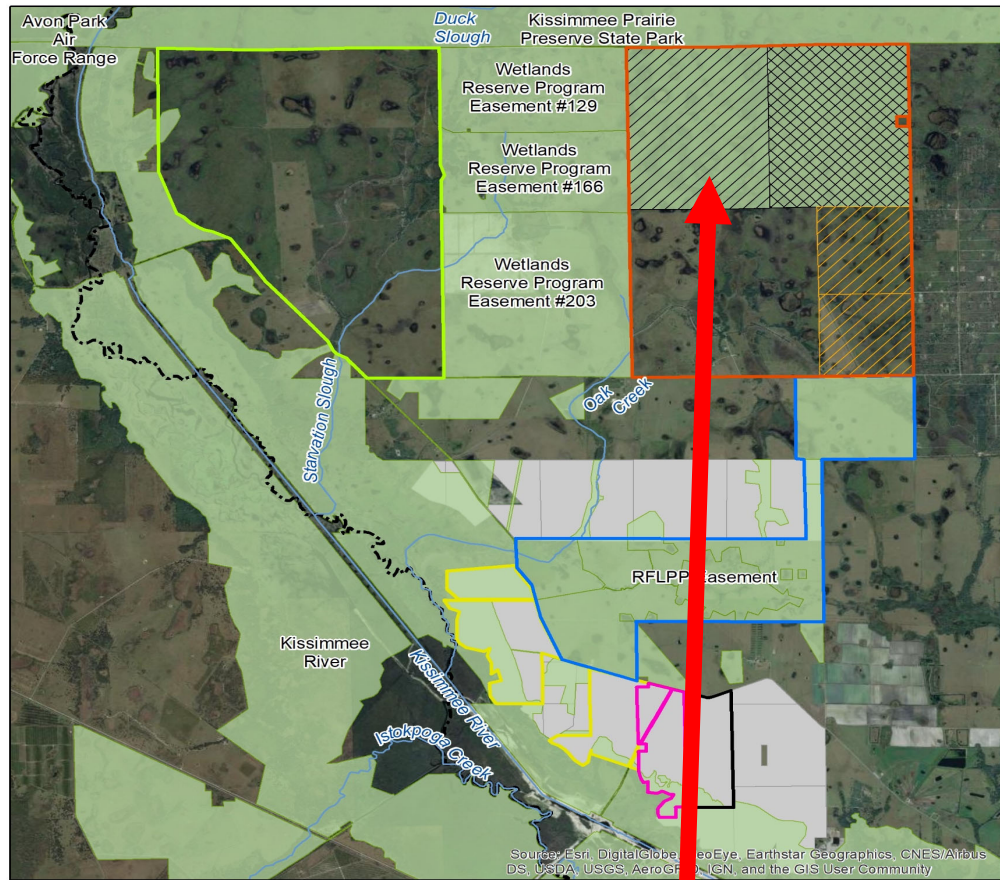
Hydrologic model with UF



Wetlands Restoration & Enhancement Projects: Loxahatchee River

**Jonathan Dickinson State Park, Jupiter Inlet District: Moonshine
Creek Oxbow Restoration & Mangrove Island Restoration**

Chain of Lakes

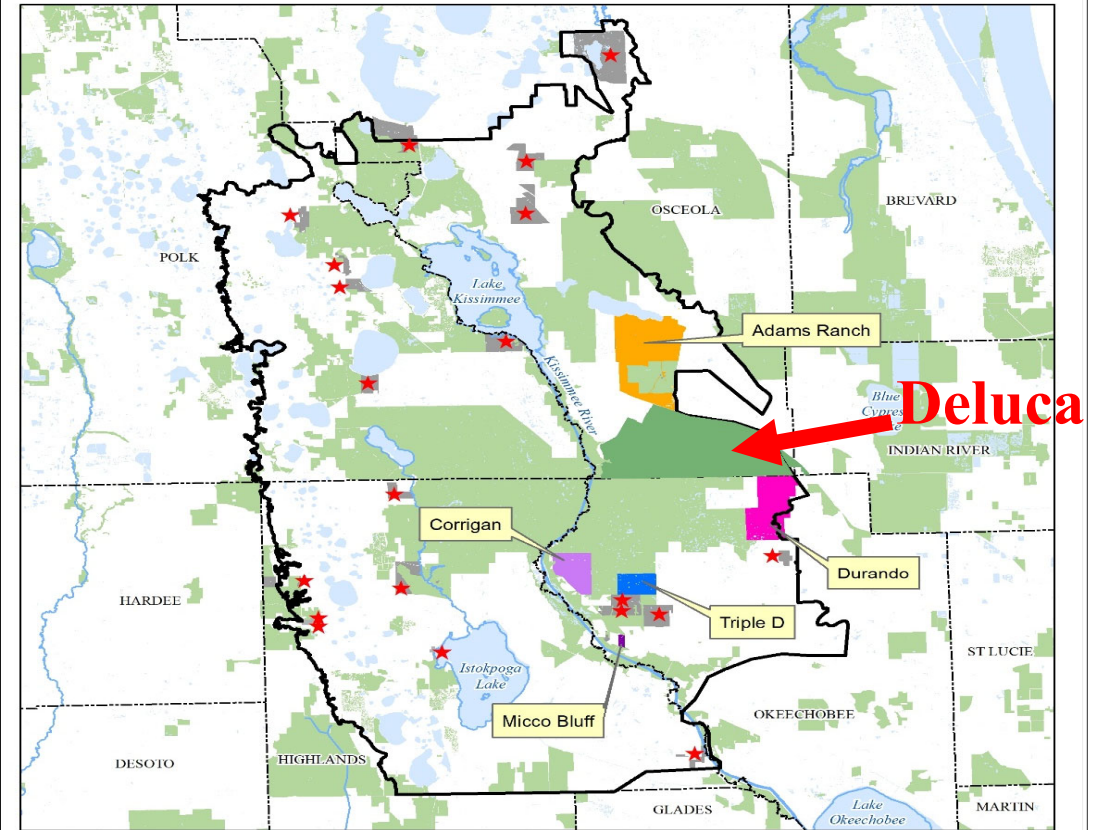
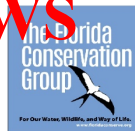


Focal Ranches Okeechobee County, FL

- Triple Diamond Ranch (~4000ac unprotected)
- Triple Diamond Future USFWS Fee Simple Acquisition (1280ac)
- Triple Diamond DEP Acquisition (1,992ac)
- Triple Diamond USFWS Acquisition (2,000ac)
- Micco Bluff Ranch Potential USFWS Easement (362ac unprotected)
- Micco Bluff Ranch Potential RFLPP/REPI Easement (668ac unprotected)
- Potential Future Conservation Easement (407ac unprotected)
- Potential Future Acquisition (6,251ac unprotected)
- Existing Conservation Area
- RFLPP Tier 1 Projects

Triple Diamond Ranch

USFWS



Everglades Headwaters National Wildlife Refuge

USFWS Land Protection Priority Projects

Willing Sellers

Current Fee Simple Projects (recreational access)

 Corrigan (6,250 acres)

 Durando (12,000 acres)

Current Less-than-Fee Projects (conservation easements on working lands)

 Micco Bluff (367 acres)

 Adams Ranch (18,549 acres)

Current Fee/Less-than-Fee Combination Projects

 Triple Diamond (4,000 acres)

 Destiny (Pending Conservation)

★ Potential Future Less-than-Fee Projects

 Everglades Headwaters NWR

 Existing Conservation Area



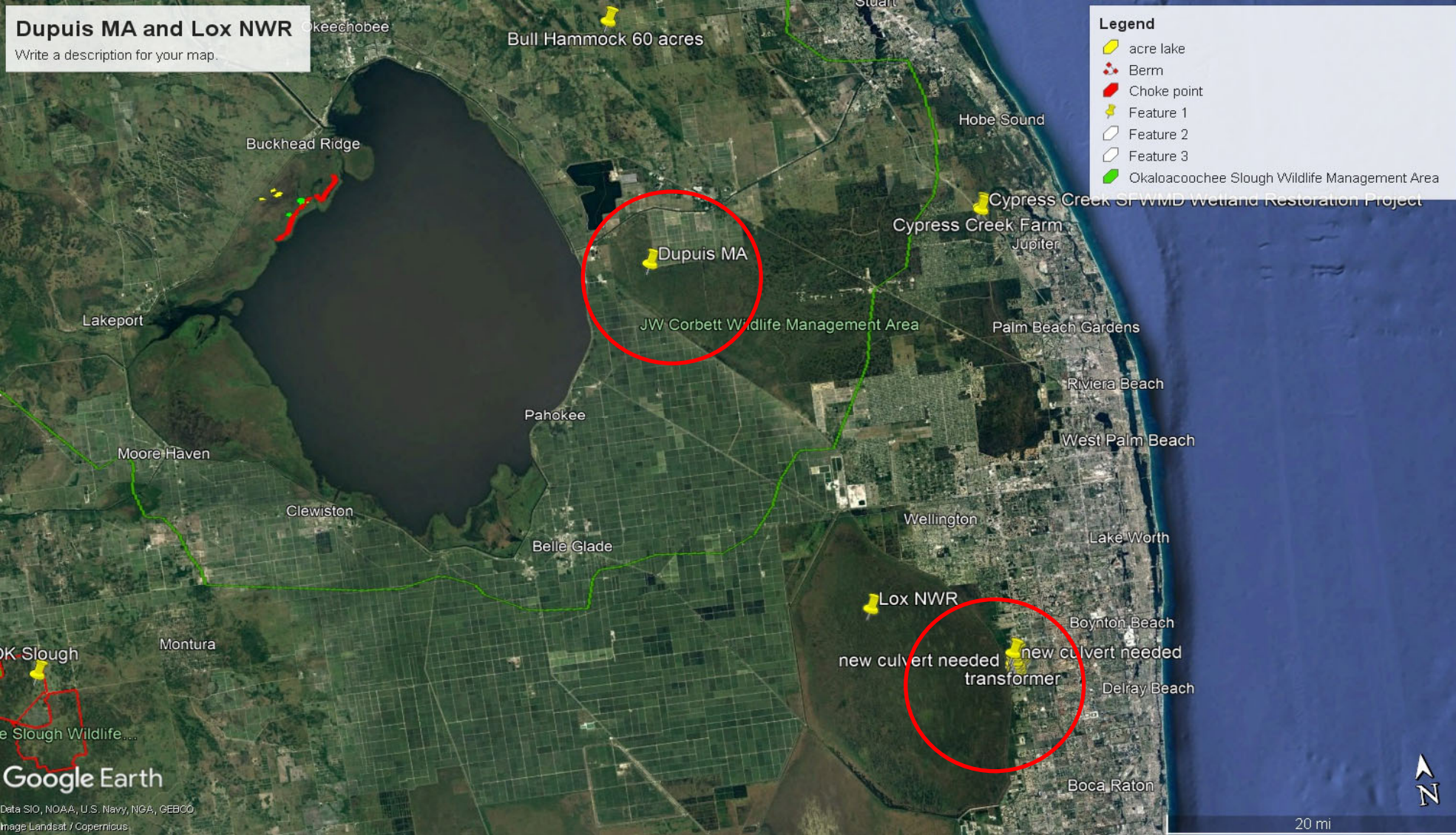
USFWS currently working with willing sellers on these priority projects

Presenter: Jeff Beal

Cypress Lake: Gardner-Cobb Marsh



**NAWCA funding to enhance wetland hydrology
on 6,371 acres of wetlands**

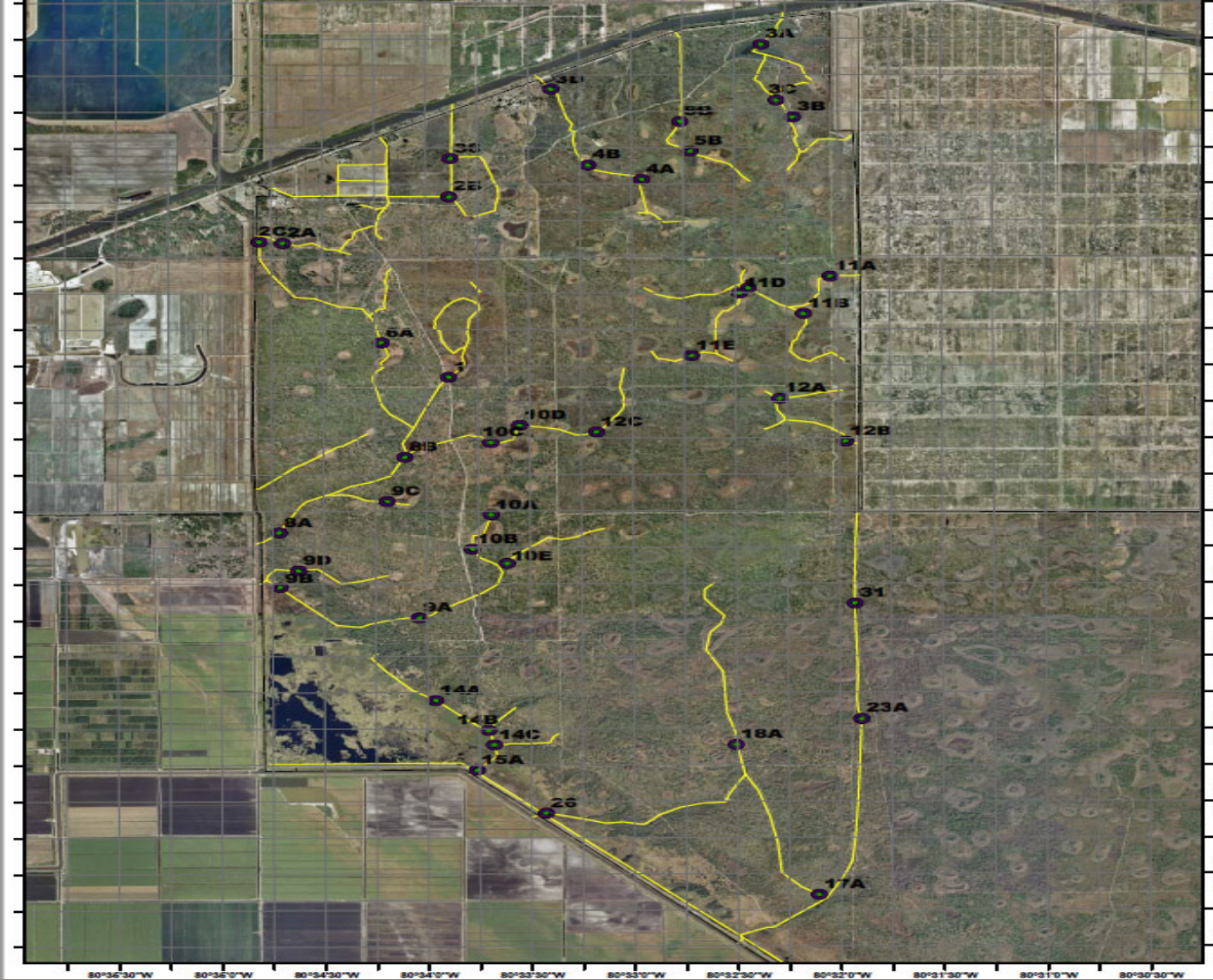


Dupuis MA

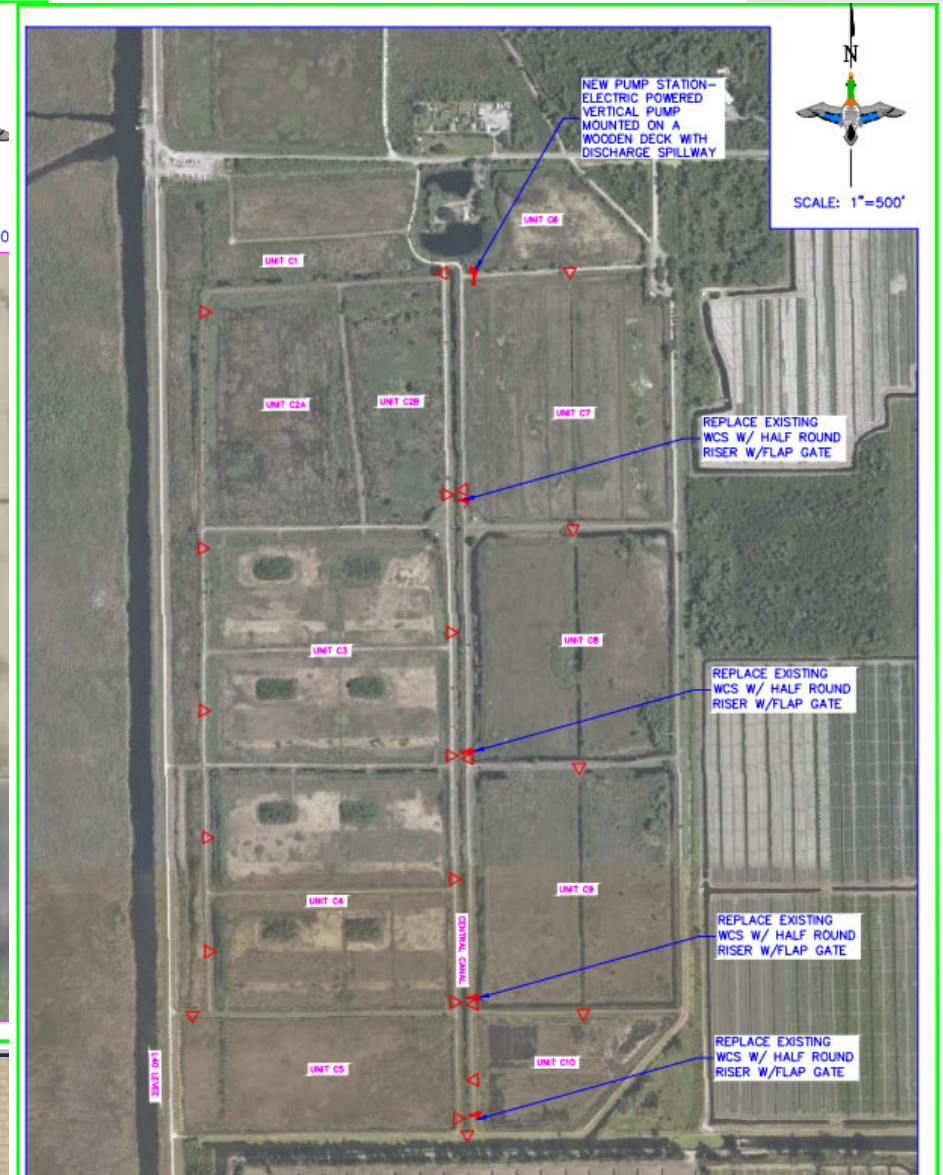
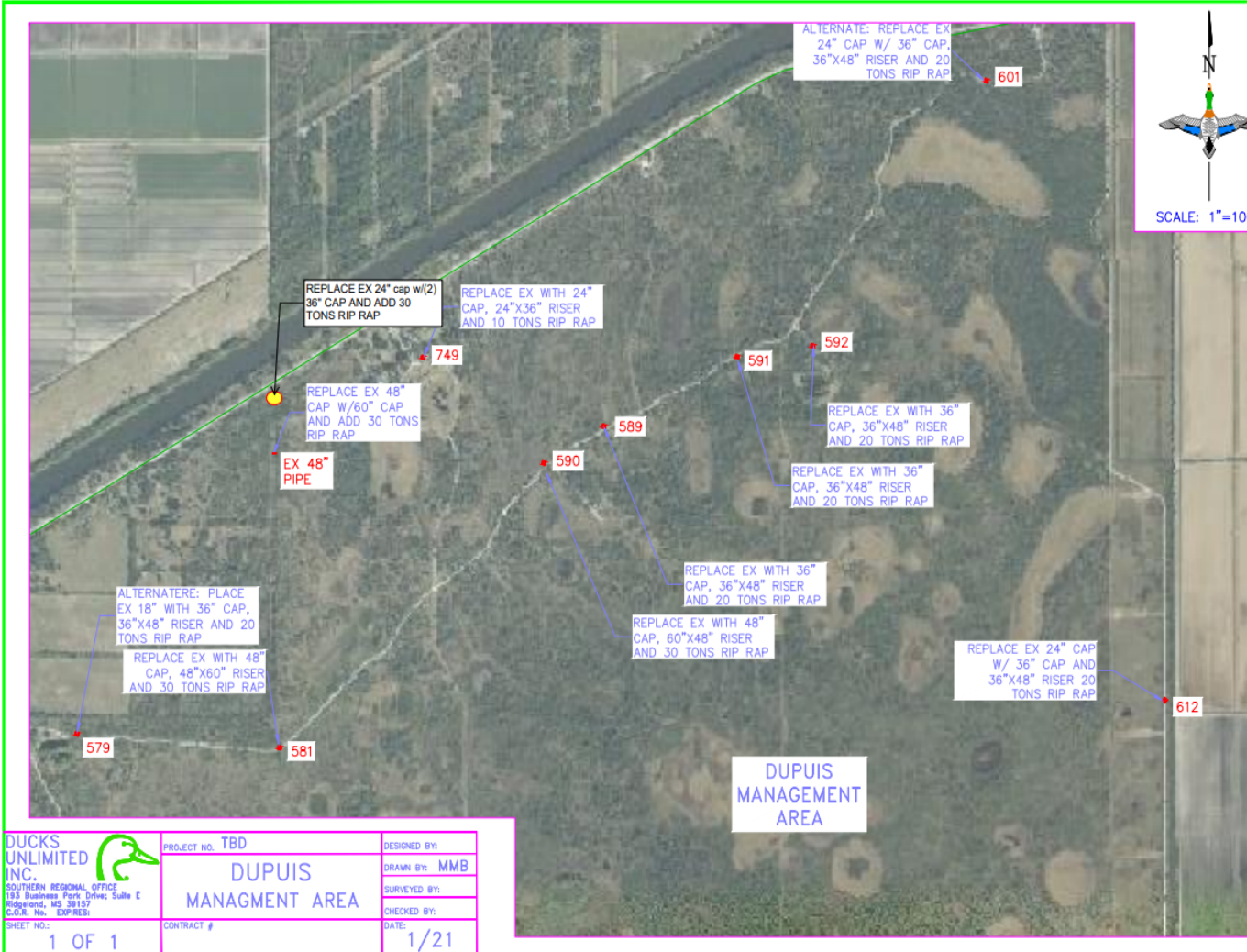
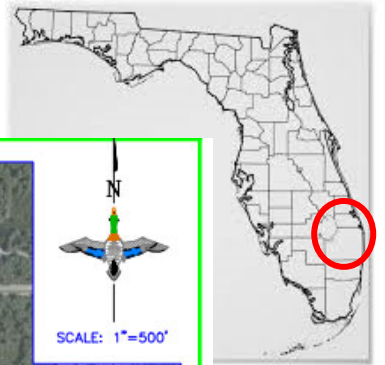
Lox NWR



Dupuis MA



Active NAWCA: Dupuis MA and Lox NWR



300 acres

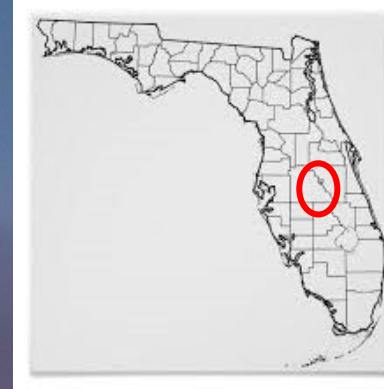
1500 acres

SFEW I

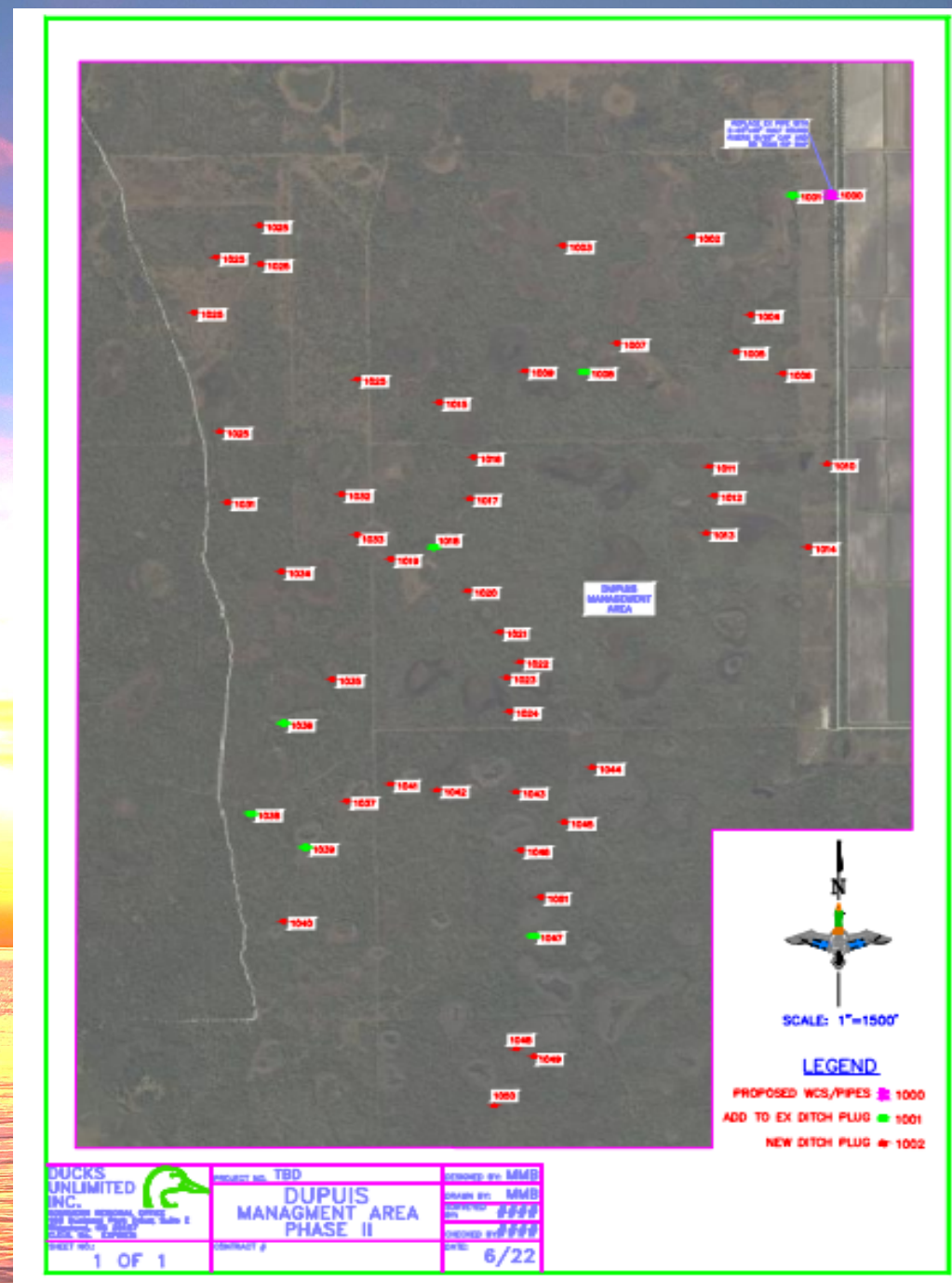


Dupuis Phase 2

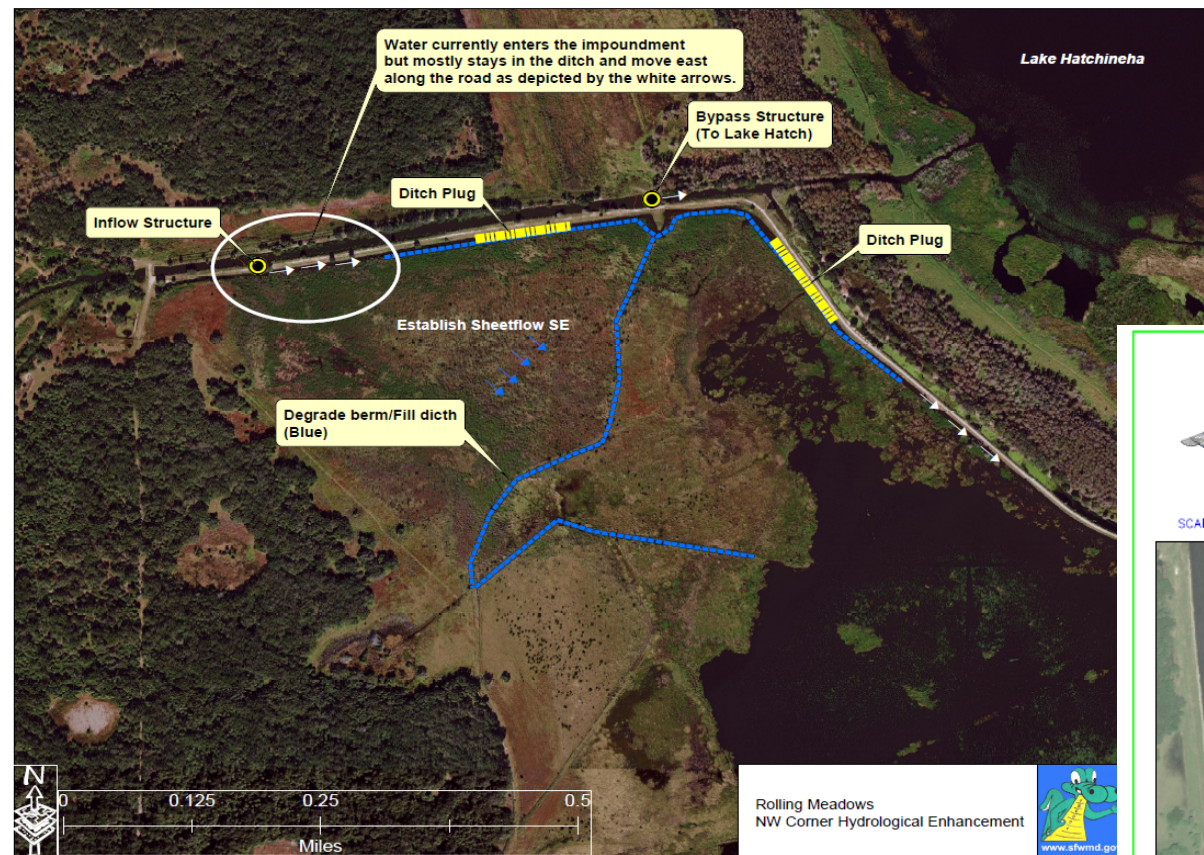
3500 acres



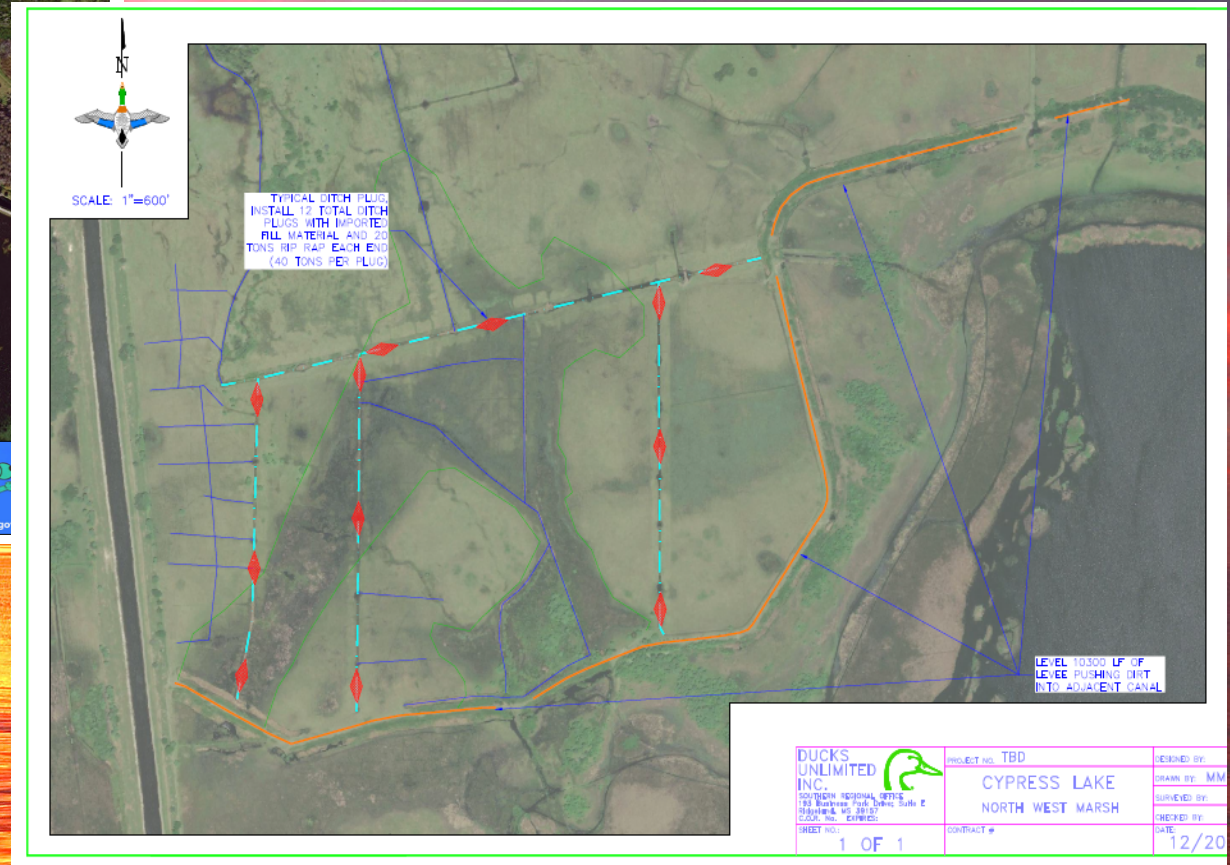
SFEW IV



Rolling Meadows and Cypress Lake



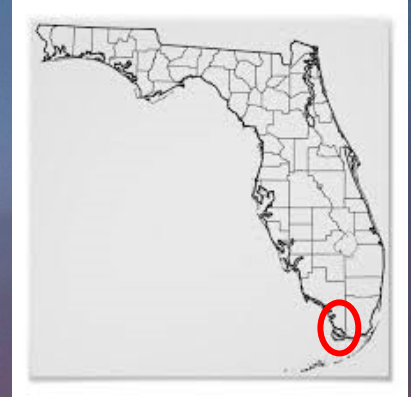
1150 acres



185 acres

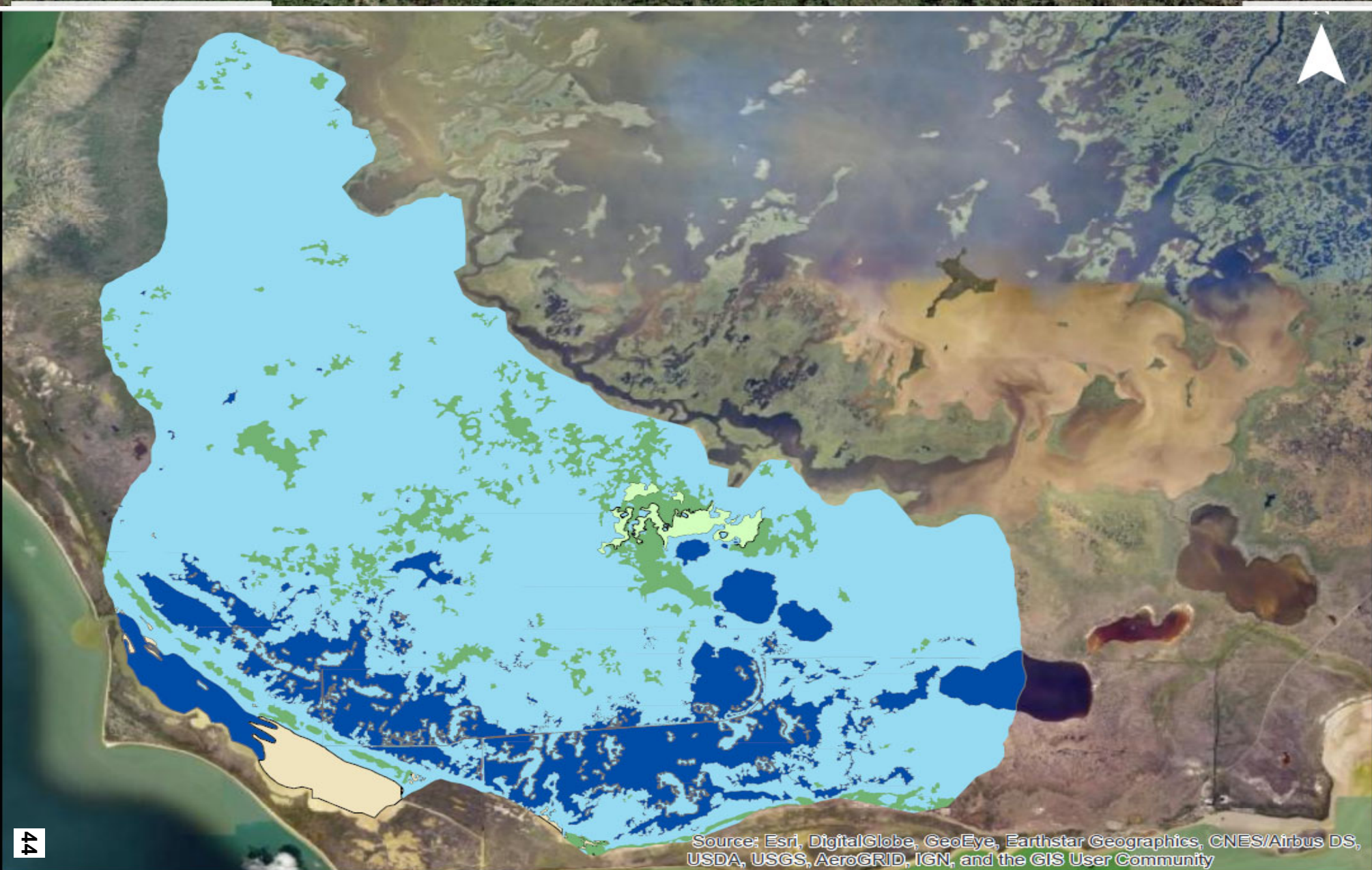
SFEW III

Cape Sable



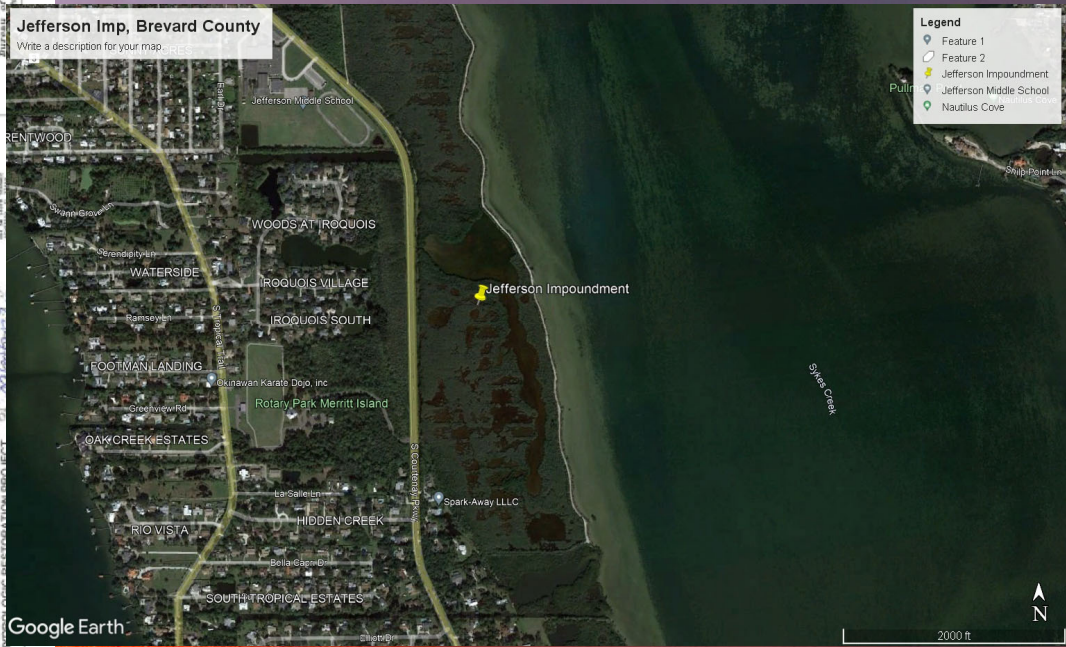
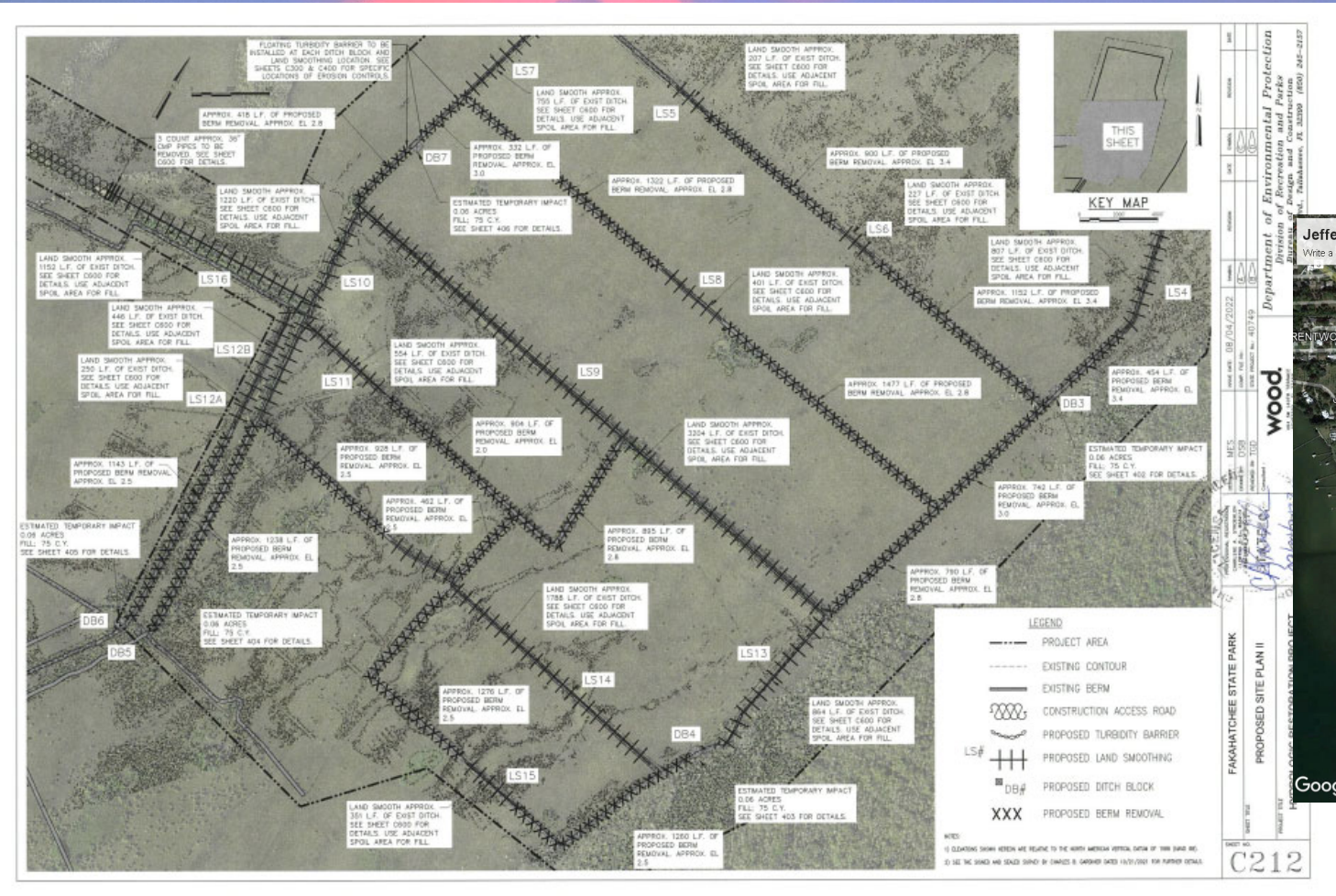
SFEW II

50,000 acres



Source: Esri, DigitalGlobe, GeoEye, Earthstar Geographics, CNES/Airbus DS, USDA, USGS, AeroGRID, IGN, and the GIS User Community

Fakahatchee Strand SP Phase 1



1000 acres

72 acres

SFEW V

Cypress Creek- NW Fork Loxahatchee River

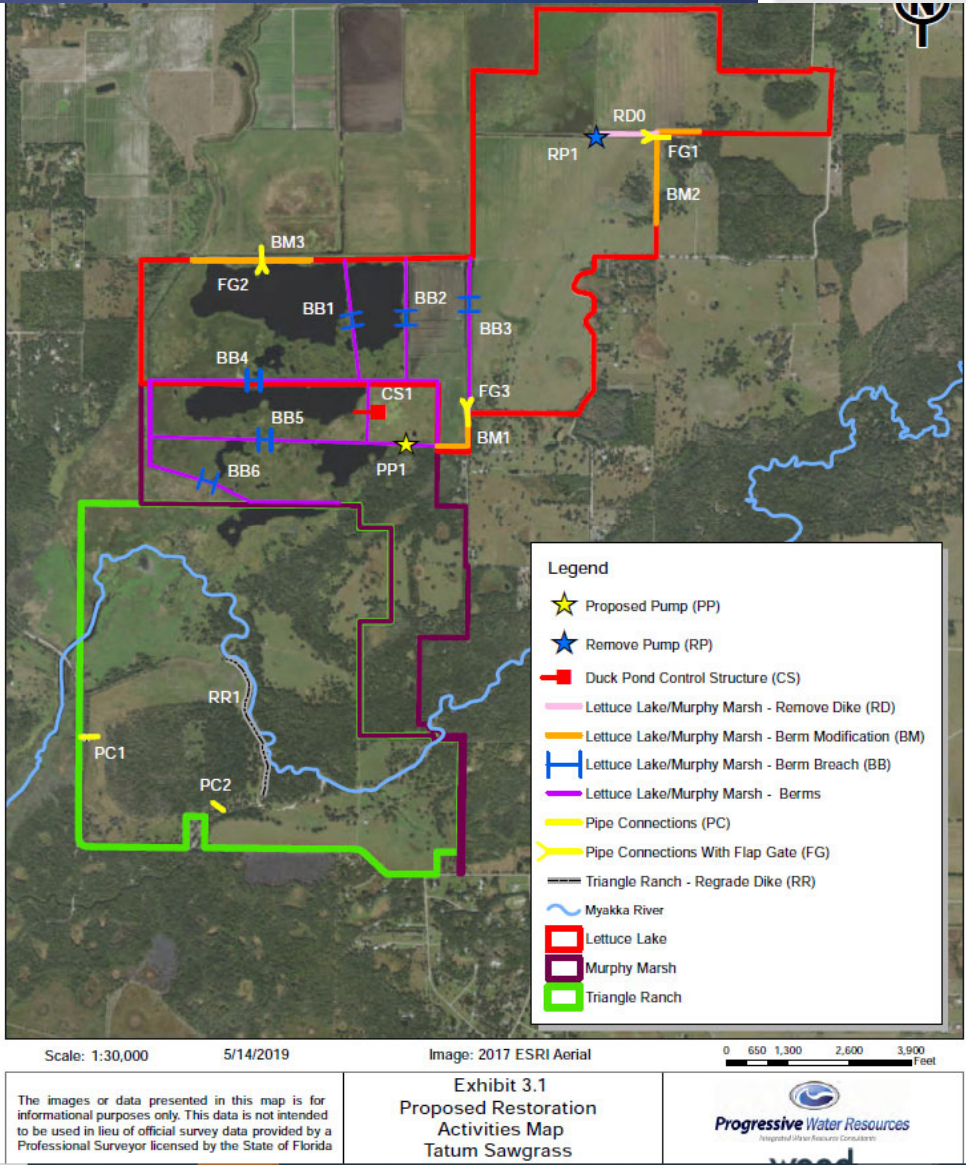


~3000 acres

SFEW VI

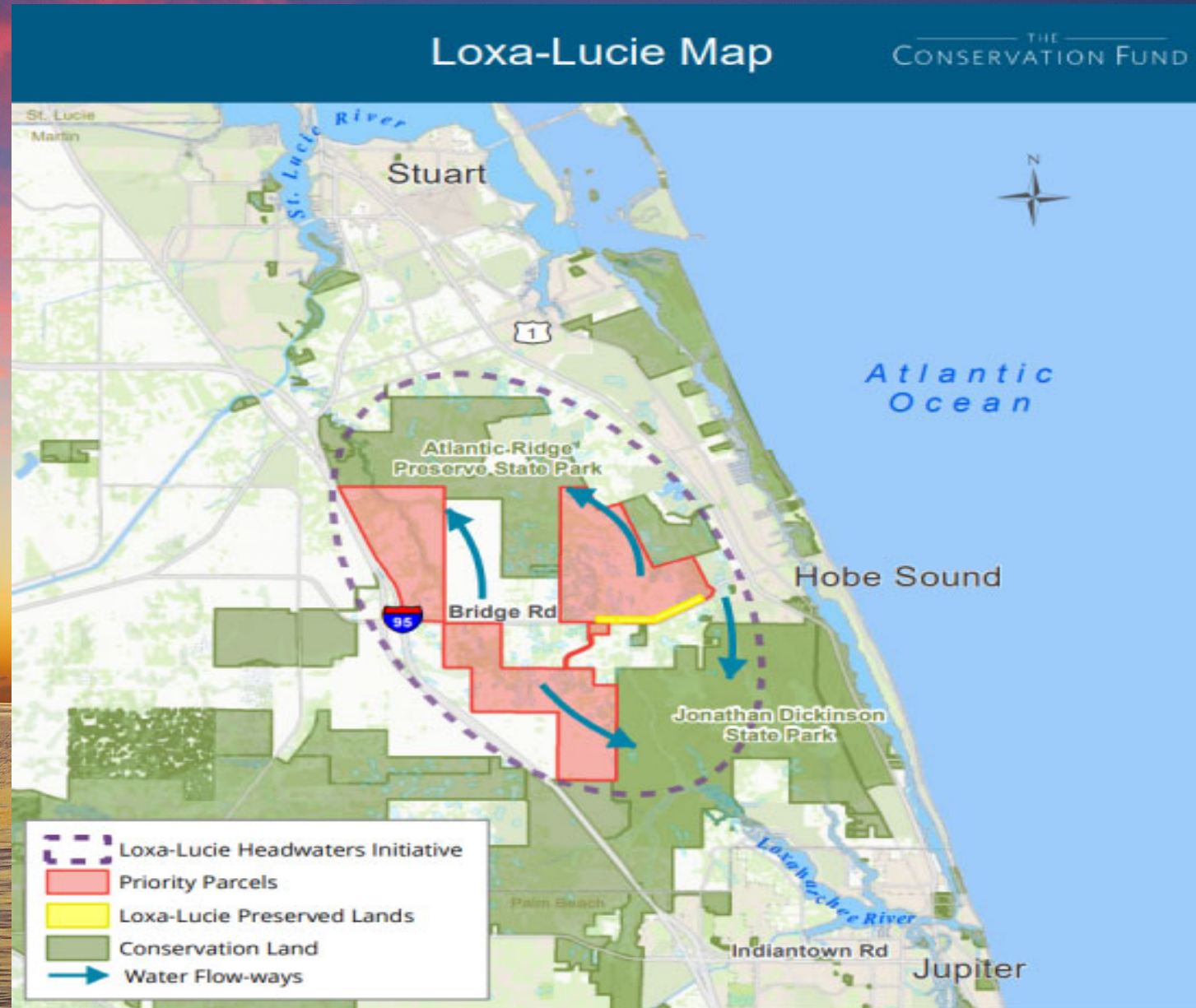


SW FL/Myakka River basin



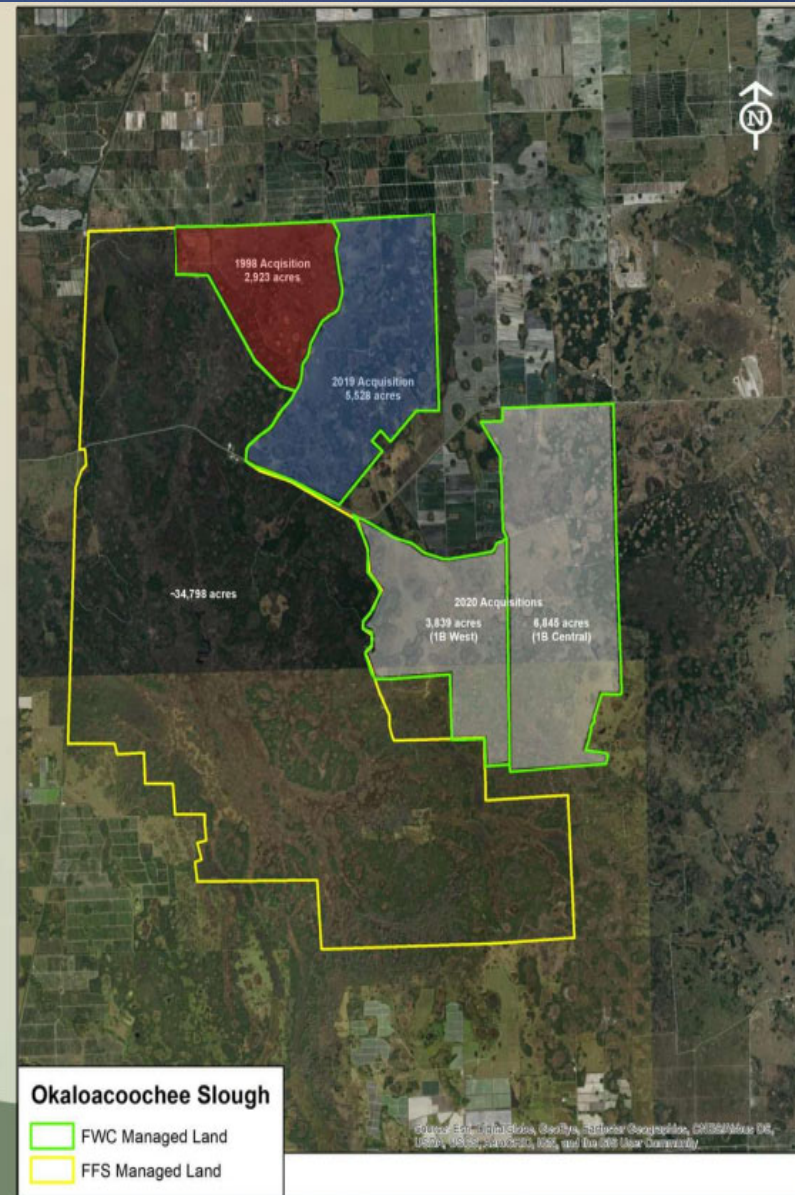
Atlantic Ridge State Park

2700 acres





- Original portion managed by FWC (red)
 - 2,923 acres
- 2019 acquisition (blue)
 - 5,528 acres
- 2020 acquisition (white)
 - 10,684 acres
- Total acres = 19,135



~19,000 new addition

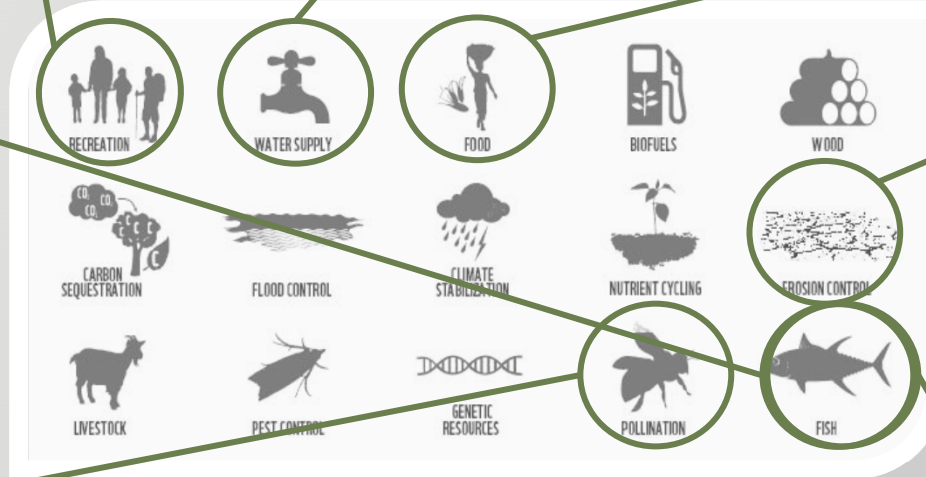
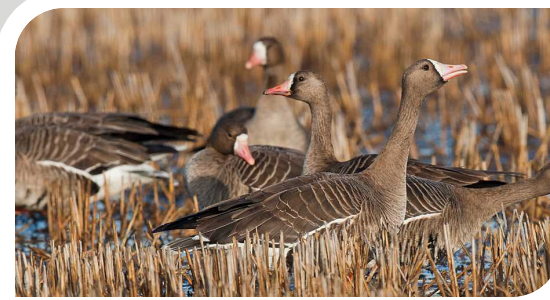


Presenter: Tom Reinert

NRCS ACEP Partner

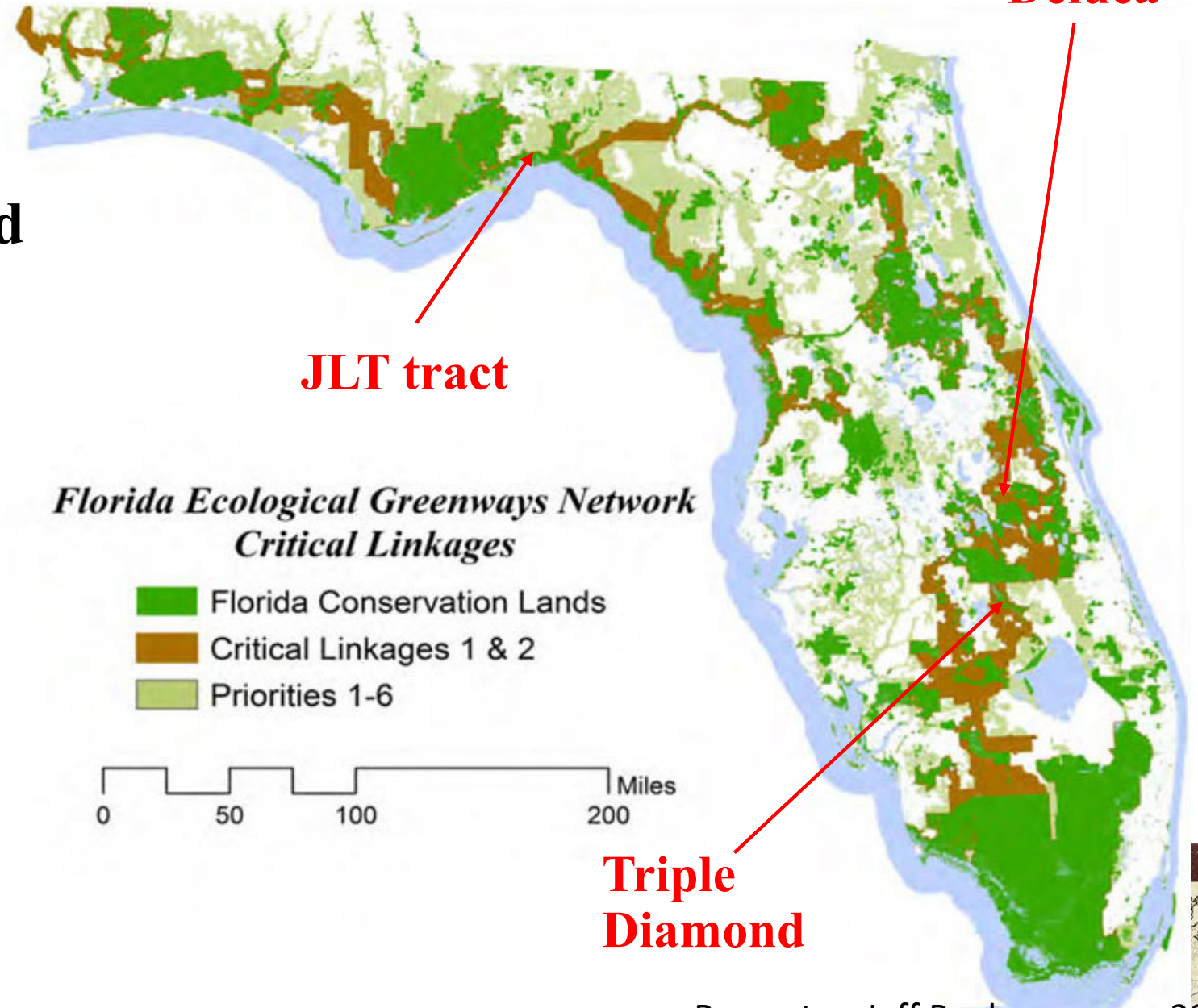
- Rice Stewardship Program: water quality, quantity, wildlife habitat
- Texas Prairie Wetlands Program
- WRP/WRE easements, hydrology & reforestation
- WRP/WRE technical assistance for management





Florida Wildlife Corridor

- 10 million acres conserved
- 8 million acres proposed



Thanks for all you do to conserve and protect!

Help Florida Ducks Unlimited



Tag Our Rides & Show Our Pride!

Jbeal@ducks.org

772.302.0774



Presenter: Jeff Beal

Want to Comment?

Zoom:

- If you're participating via Zoom – use the Raise Hand feature

Phone:

- If you're participating via Phone –
 - *9 Raises Hand
 - *6 Mutes/Unmutes

Jbeal@ducks.org

72.302.0774



Presenter: Jeff Beal

STA Access and Permitting Updates for the 2023-24 Hunting Season



Cheyenne Walker, Public Hunting Area Biologist – South Region

Cheyenne.Walker@myfwc.com

The Stormwater Treatment Areas

Bird watchers at STA 1W

Google image of cattails

- Man-made wetland designed to reduce phosphorus loading to the Everglades
- In order for the STAs to work effectively, rules are in place to prevent damage to the vegetation and the disruption of the water flow
- As a secondary purpose, the STAs offer many great recreation opportunities such as wildlife viewing and renowned waterfowl hunting



Marsh Access and Parking Spots

Marsh Access and Parking Spots

- Allow hunters participating in afternoon hunts an extra 30 minutes to check out.
- Increase review of parking spot selection to enhance hunter satisfaction



Marsh Access and Parking Spots

- Clarification on entering the marsh
 - If both sides of the levee are open, then hunters may enter the marsh on either side regardless of which side your assigned parking spot is on.
 - We will use brochure language and messaging to minimize confusion
- We also fixed an oversight that directed hunters where they could enter the marsh but not where they could exit.
 - Hunters now required to enter and exit the marsh directly from their assigned parking spots
- All STAs will remain as assigned parking spots except STA 5/6 which will continue with assigned levees.



Quota permits

- Due to construction projects and habitat conditions, the plans for the number of permits will be as follows
 - STA 1W
 - Quota permits are likely to remain the same as last year
 - There may be a project that will not affect the quotas
 - STA 2
 - Due to construction, all hunts will be moved to Sundays while construction is ongoing
 - Quota permits may need to be adjusted
 - STA 3/4
 - Quota permits are likely to remain the same as last year
 - STA 5/6
 - Due to habitat conditions, quota permits may need to be reduced



A photograph of several mallard ducks in flight, captured from a low angle. The ducks are spread across the frame, with their wings fully extended, showing the characteristic blue and white patterns on the underside. Their green heads and yellow beaks are clearly visible. The background is a soft-focus view of trees and foliage, suggesting a natural, outdoor setting. The entire image is framed by a thin, white, hand-drawn style border.

Permitting and Stand-by Opportunities

Permitting and Stand-by Opportunities

- We will be discontinuing the first come first serve system for the standby opportunities
- We will be moving to a random drawing using the established structure of Phase IV reissues



Permitting and Stand-by Opportunities

- How will this work?
 - Hunters will apply each Saturday-Tuesday for the hunts occurring the following Friday-Sunday
 - Drawing will be held each Tuesday and results will be available either late Tuesday or early Wednesday

NOVEMBER 2023

SUN	MON	TUE	WED	THU	FRI	SAT
			1	2	3	4
5	6	7	8	9	10	11 ✓
12 ✓	13 ✓	14 ✓	15	16	17	18 ★
19 ★	20	21	22	23	24	25
26	27	28	29	30		

www.calendaroptions.com



Comments/Questions?

Zoom:

- If you're participating via Zoom –
use the Raise Hand feature

Phone:

- If you're participating via Phone –
*9 Raises Hand
*6 Mutes/Unmutes



STA Waterfowl & Alligator 2023-2024 Hunting Season

Recreation Forum June 19, 2023

James Harbaugh
Recreation Planner
jharbaug@sfwmd.gov



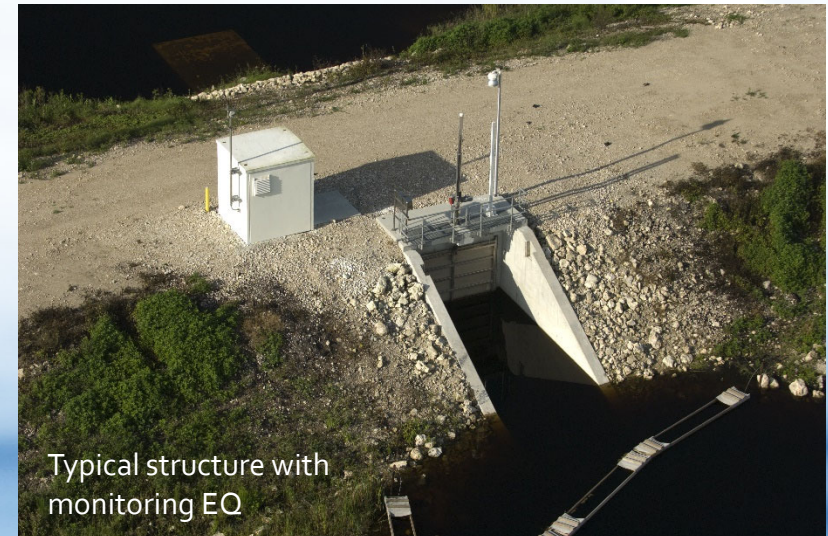
Outflow Canals

- Outflow canals closed to access and hunting
 - Final discharge and monitoring
- Due to achieving Water Quality Based Effluent Limitation (WQBEL)

**NO HUNTING
OR PUBLIC ACCESS**

IN THIS CANAL

**SFWMD
Rule 40E-7 F.A.C.**



Typical structure with
monitoring EQ

FWC Alligator Statewide Changes

- STA's and A1 FEB alligator hunting format unchanged from 2021 (5PM -10AM)
- 2022 FWC Alligator statewide rule changed to allow 24-hour hunting
 - Not compatible with STA function
 - Unsecured access
 - Compatibility with other public use
- FWC November hunting extension
 - Conflicts with other scheduled events



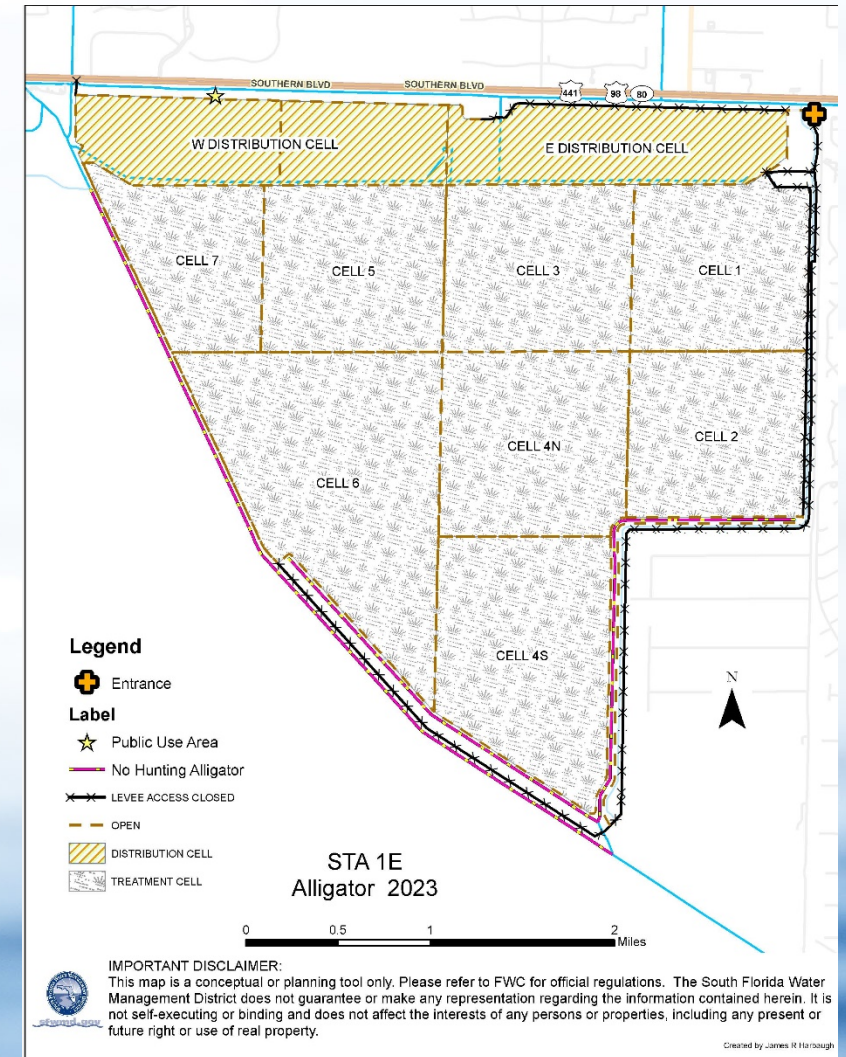
Trail Access and Parking Spot

- Helicopter flight June 15th
- FWC, SFWMD - STA Management Team, and Recreation
 - Pinpointed and recorded suitable locations with onboard GPS
- Next - create trails to enhance access for waterfowl hunts



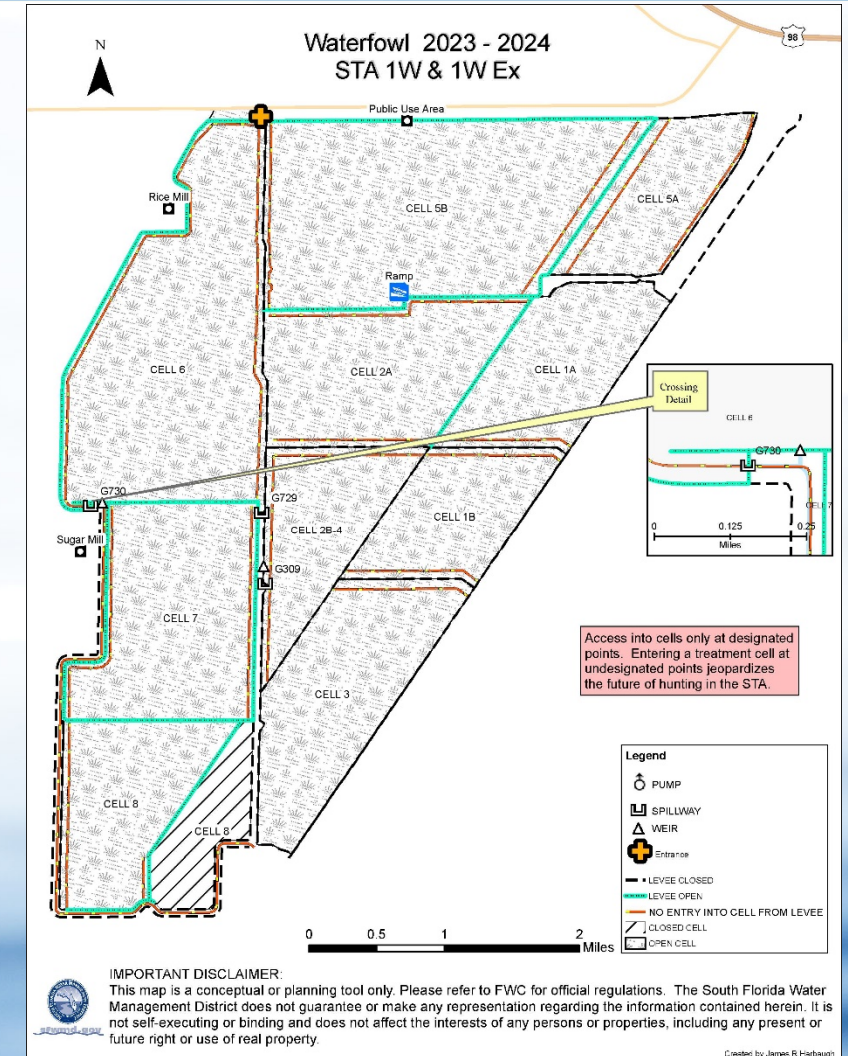
STA 1E Alligator 2023

- Quota total 30
- 1st quota season 2023
- Youth Hunt Programs very successful
- Highly urbanized area – unique for STA's
- Closed canals
 - WQBEL monitoring
 - Loxahatchee National Wildlife Refuge



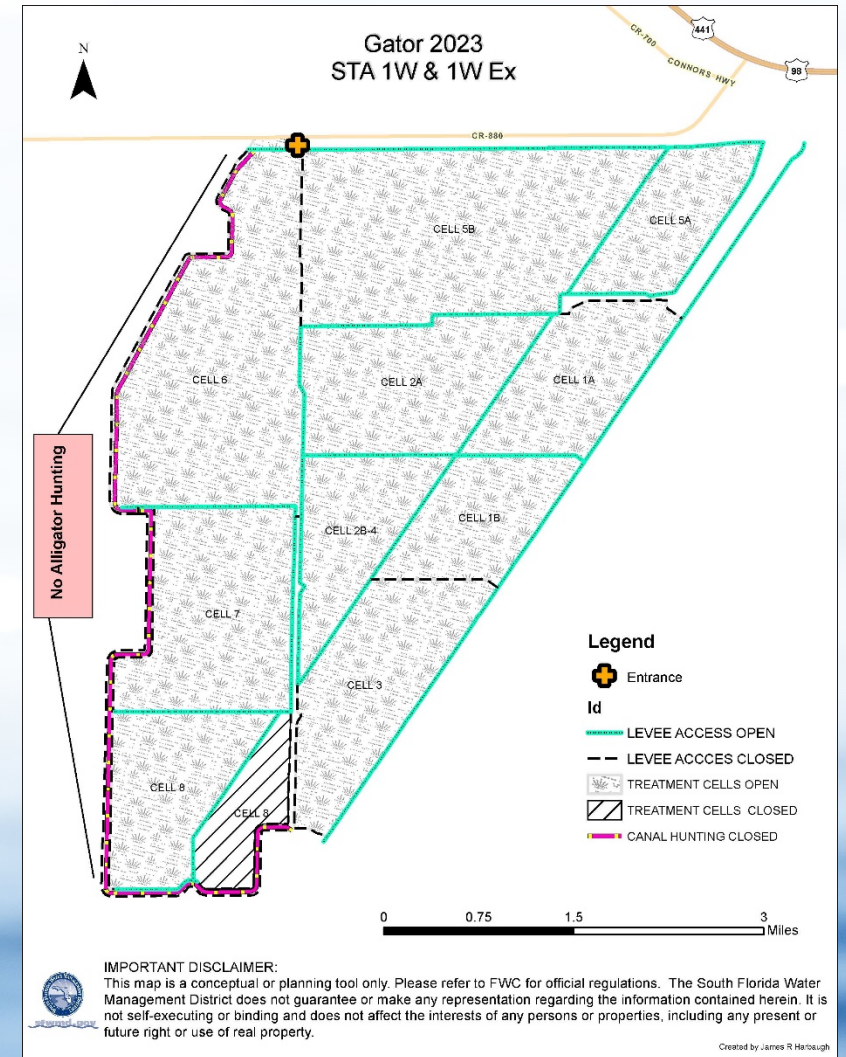
STA 1W Waterfowl

- No foreseeable quota changes (80)
- SE Cell 8 still closed
 - G780 project - waterfowl season starts before anticipated Oct. completion
- Closed levees logistical reasons
 - No cell access or no suitable hunting
 - Culvert replacement – Nov. 2023
 - As of today, still not confirmed
- Expansion 2 – still under construction
 - no access planned for this year



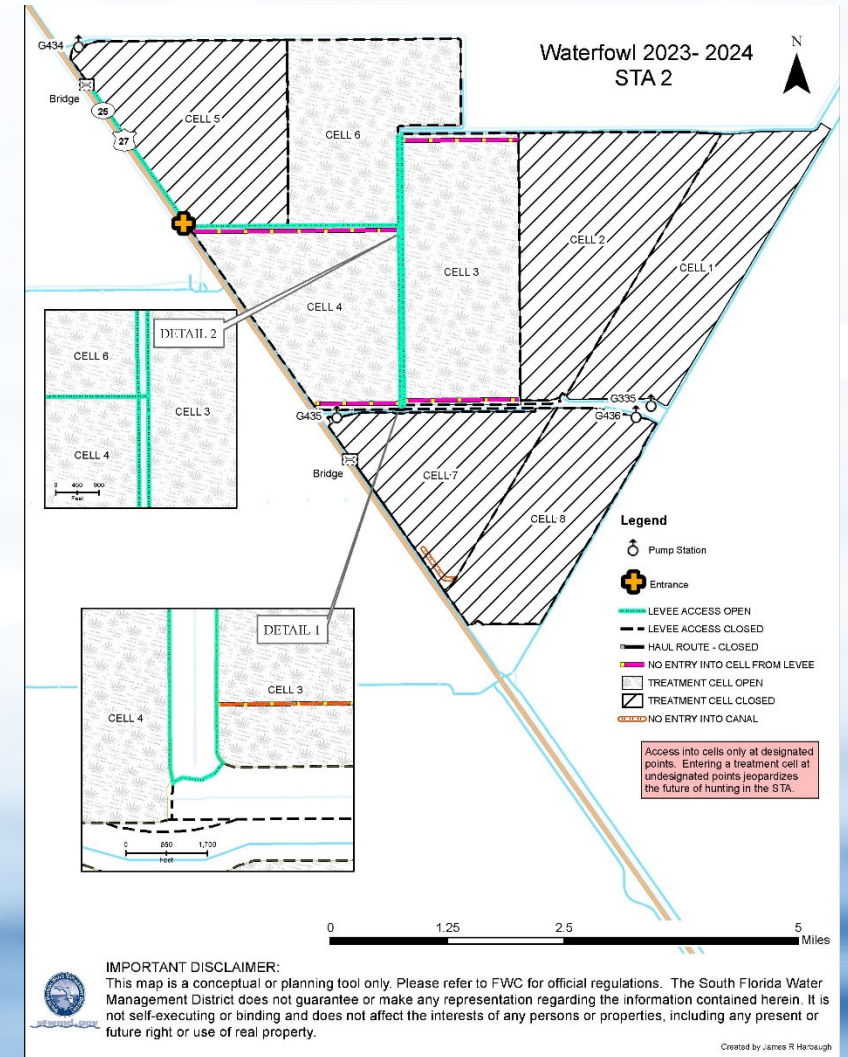
STA 1W Alligator

- Quota total 50
- Outflow canals closed to hunting
- Culvert project
 - May only affect levee access for short periods



STA 2 Waterfowl

- Significant changes
 - Move hunt day from Saturday to Sunday
 - Lose 3 Saturday scouting days
 - Sept 9th, Nov 4th, & Dec 2nd
 - Move Access
 - North bridge
 - Check in station
 - Quota to be determined
 - Likely increase



STA 2 Alligator

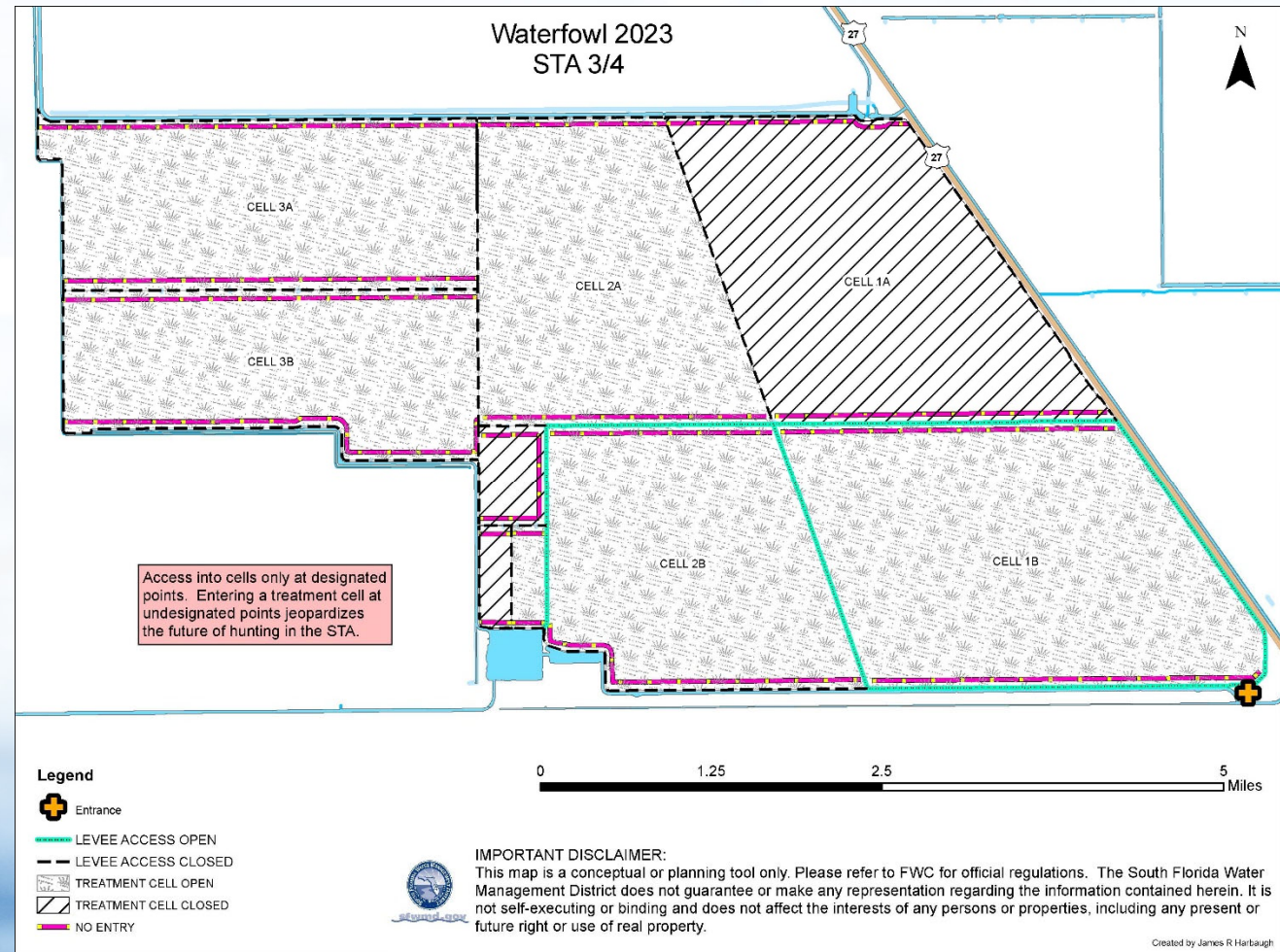
- No alligator hunting 2023
- Same as 2021 & 2022
- Open to hunting post construction 2024



STA 2- CELL 2 APRIL 2022

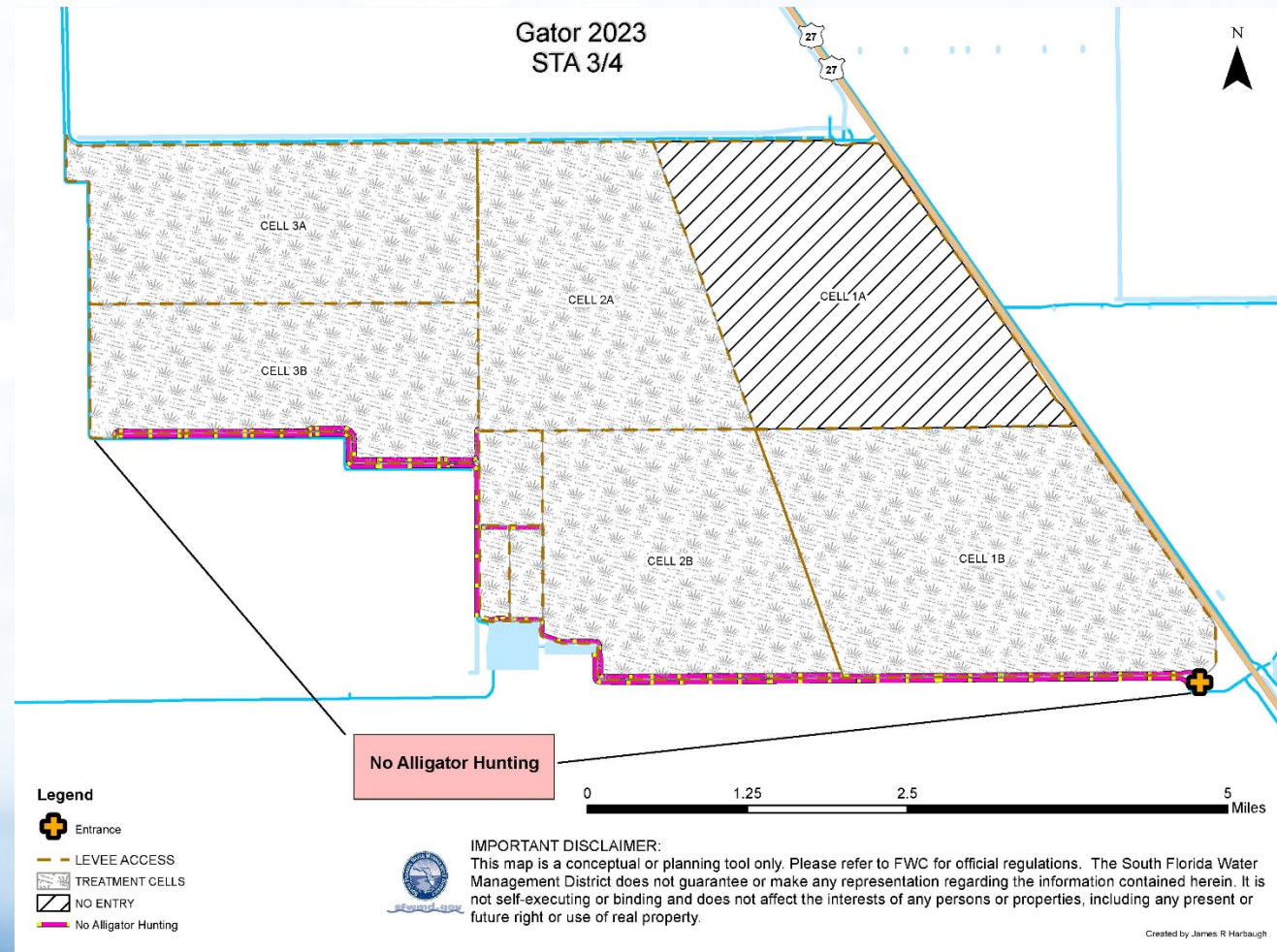
STA 3/4 Waterfowl

- No foreseeable quota change (40)
 - Continued draw down cell 1A
 - Veg delamination
- Similar in problem 2A
 - No draw down due to flood control needs



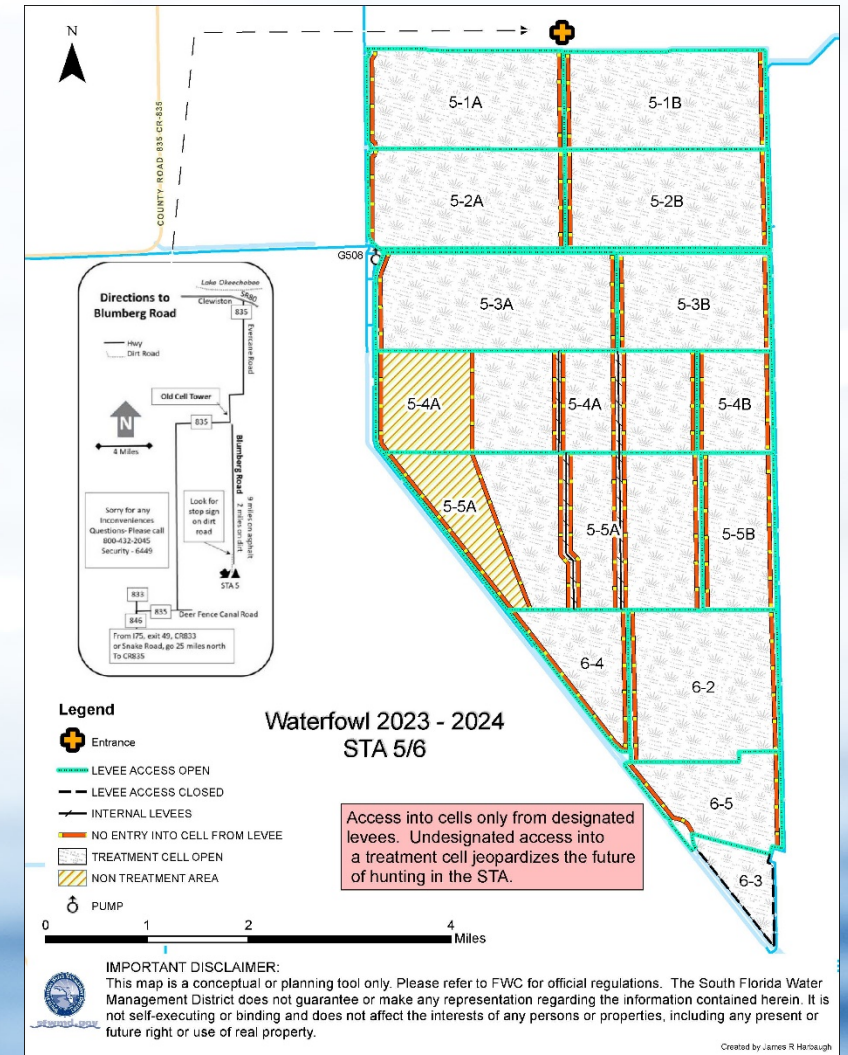
STA 3/4 Alligator

- Quota 100 total
- Outflow canals closed to hunting



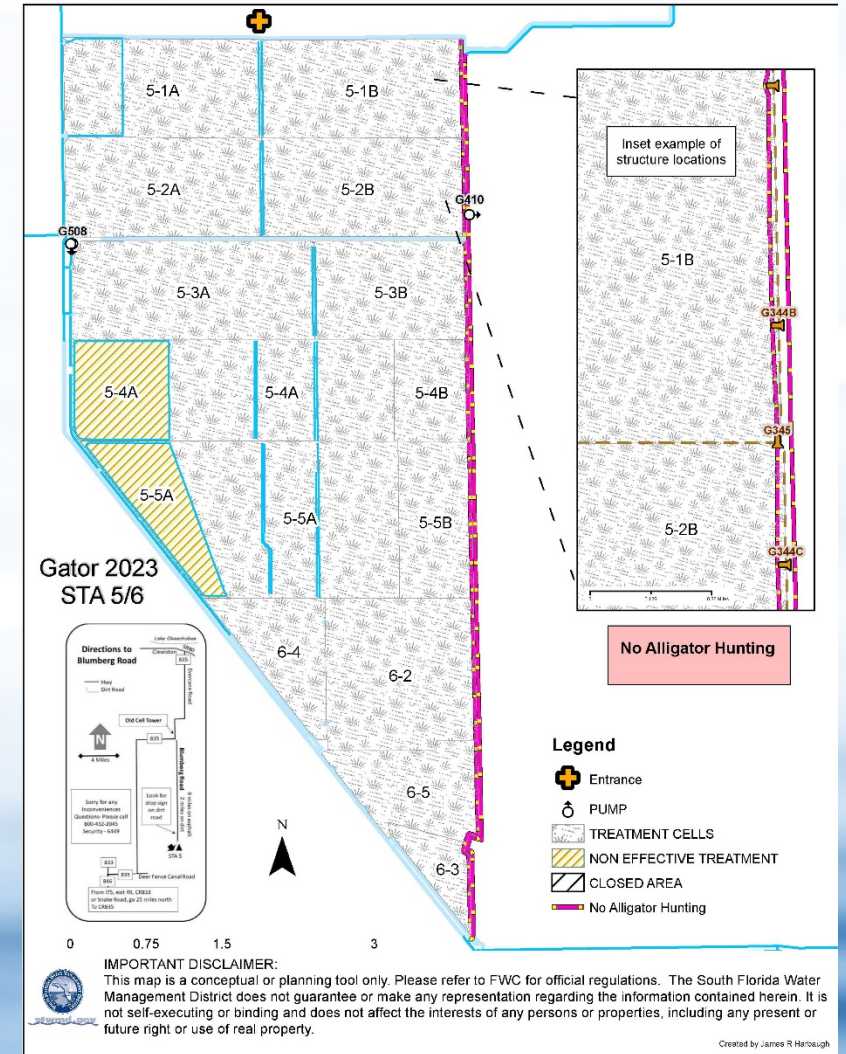
STA 5/6 Waterfowl

- Reduced Quota (30)
 - Vegetation challenges
 - Spatterdock dominate
- Blumberg Rd access
 - C 139 FEB construction zone
 - Deer Fence Canal Rd reroute
 - Anticipated completion not in time to open road for public
 - Levee Access



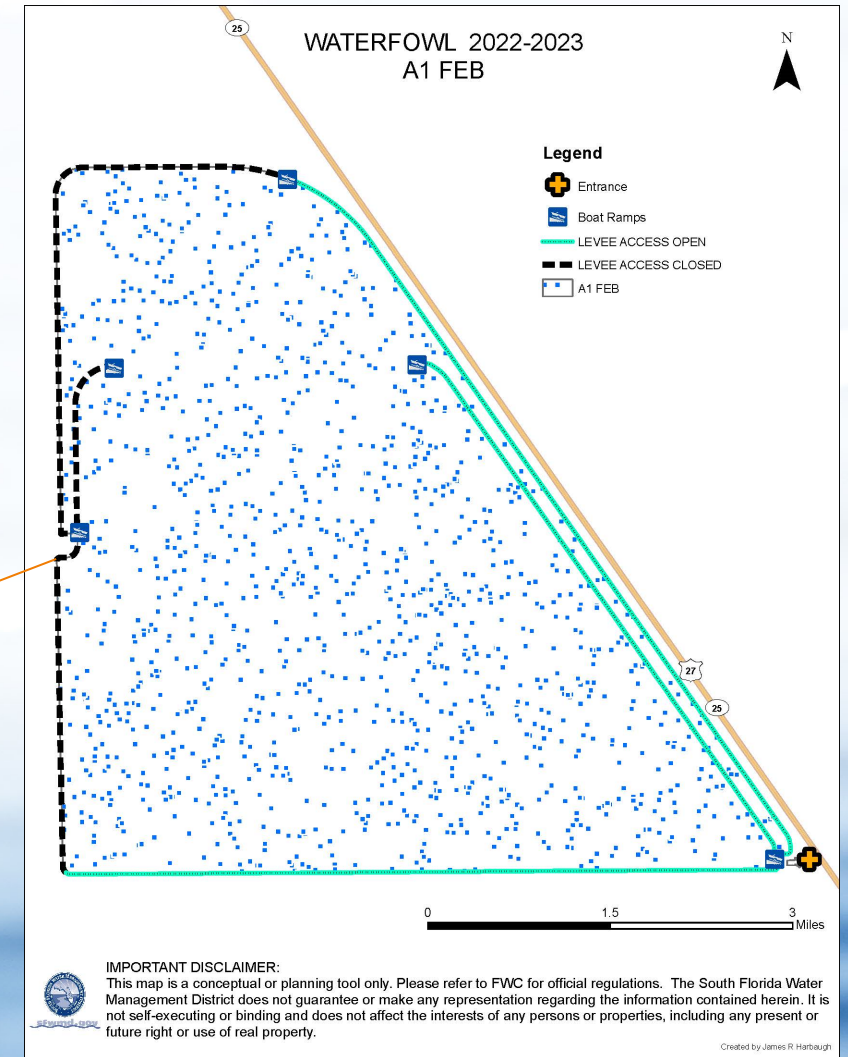
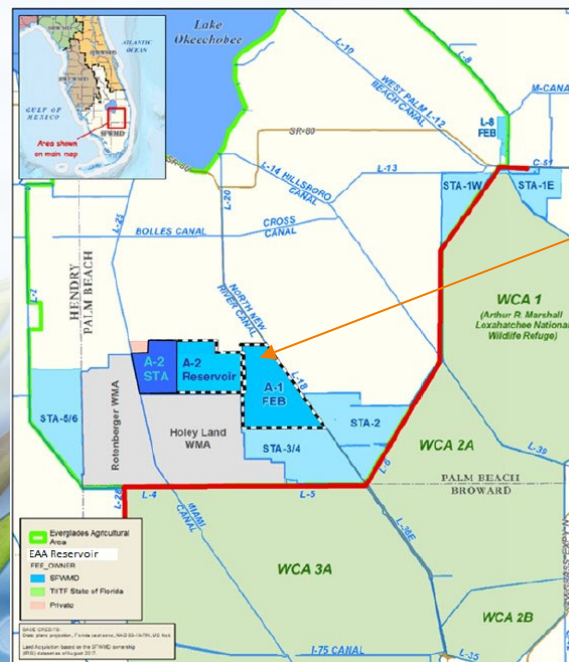
STA 5/6 Alligator

- Quota total 60
- Same access re-route
- No Alligator hunting in WQBEL monitoring canals



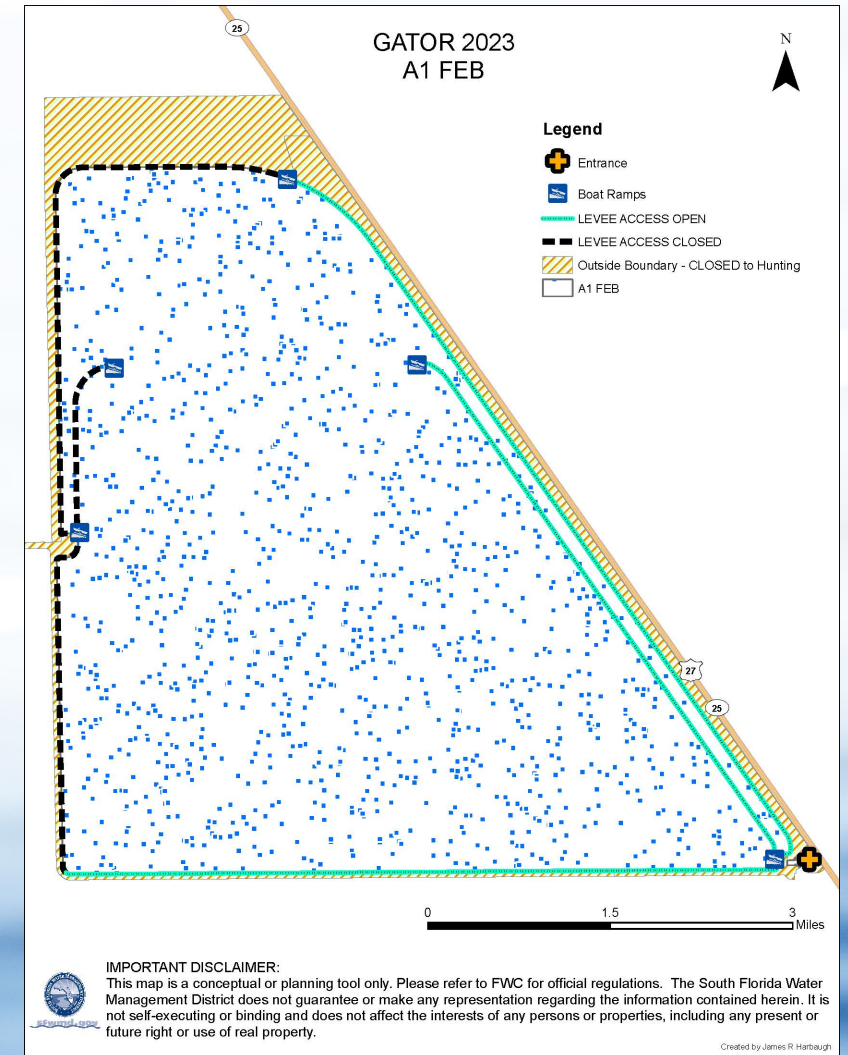
A1 FEB Waterfowl

- No foreseeable quota change (100)
- W & N levee closed due to A2 construction



A1 FEB Alligator

- Quota total 20
- Same levee access open as waterfowl
- Hunting hours consistent with STA's – not 24 hour



Want to Comment?

Zoom:

- If you're participating via Zoom – use the Raise Hand feature

Phone:

- If you're participating via Phone –
*9 Raises Hand
*6 Mutes/Unmutes



STA Waterfowl Brian Garret

James Harbaugh

jharbaug@sfwmd.gov



Recreation Facility Design and Project Updates

Recreational Public Forum
West Palm Beach, FL
June 19, 2023

Michael Cheek
Recreation Project Manager, Land Stewardship,
South Florida Water Management District

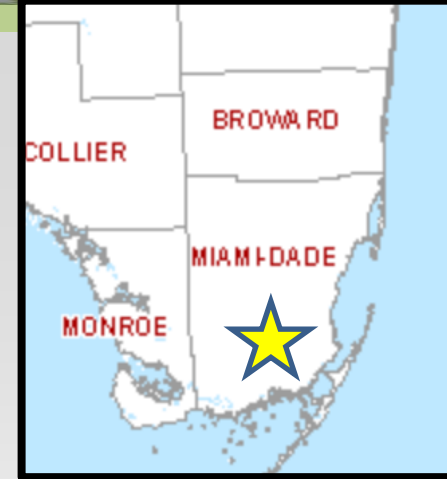


RUNDOWN

- Pedestrian/Equestrian pass-through gates in Southern Glades WEA, Rocky Glades PSGHA, and Frog Pond PSGHA
- Two proposed boat-in campsites on Kissimmee River
- Ocean to Lake Trail temporary closure in Cypress Creek
- New bathroom at Hickory Hammock Equestrian Campground
- S-356 Boat Ramp progress
- Everglades Agricultural Area (EAA) A-2 Reservoir and STA proposed Recreation
- Eagle Scout Project at CREW Flint Pen Strand Trailhead parking lot
- Kissimmee River Volunteer Event

Pedestrian/Equestrian pass-through gates in Southern Glades WEA, Rocky Glades PSGHA, and Frog Pond PSGHA

- Three District standard pedestrian/equestrian pass-through gates installed
- Allows for improved public access to loop trails



TWO PROPOSED CAMPSITES ON KISSIMMEE RIVER

- Boat-in only
- Chandler Slough Boat-in site was lost due to backfilling the C-38 canal
- Potential Florida Paddling Trails Association Blueways designation
- Distances:

Oak Creek Camp = 15 and 17 miles upstream

4E's Camp = 7 and 10 miles upstream

S-65 D Impoundment camp = 10 and 13 miles downstream



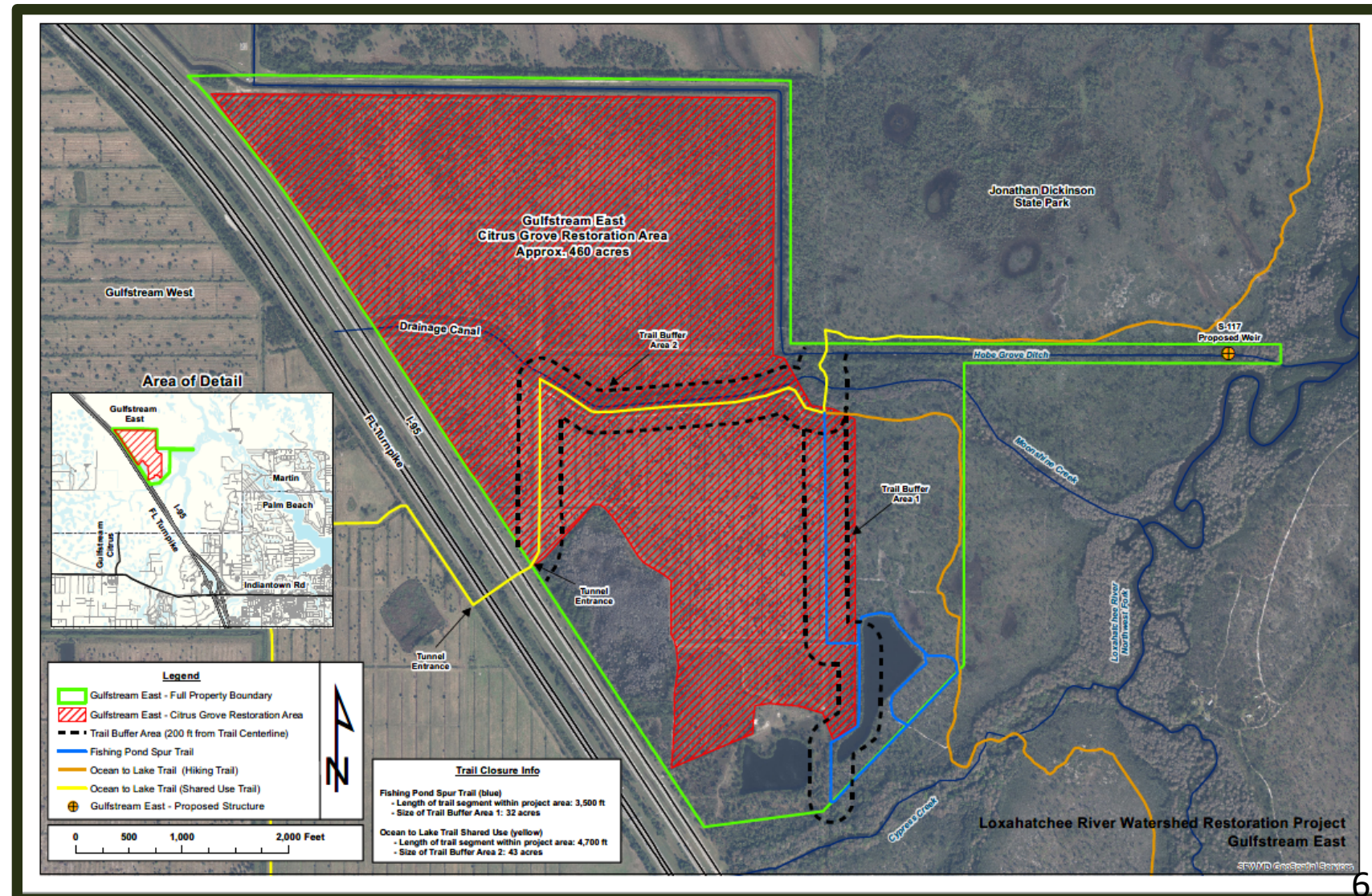
TWO PROPOSED CAMPSITES ON KISSIMMEE RIVER

- 2 primitive campsites with picnic tables and fire rings
- Reservations made online for Special Use License
(<https://www.sfwmd.gov/community-residents/recreation/sul>)
- Boat-in access only
- Nearest boat ramps are 4E's and S-65D structure



OCEAN TO LAKE TRAIL (MULTI-USE) TEMPORARY CLOSURE AT CYPRESS CREEK

- Restoration project to remove Brazilian pepper and other exotics
- Heavy equipment (grinders, loaders, etc.)
- Fishing Pond Spur Trail closed first (ca. 1 week starting June 26)
- Ocean to Lake segment closed second (ca. 1 week through July 7)



CONCRETE VAULT BATHROOM INSTALLED HICKORY HAMMOCK EQUESTRIAN CAMPGROUND KISSIMMEE RIVER PUA

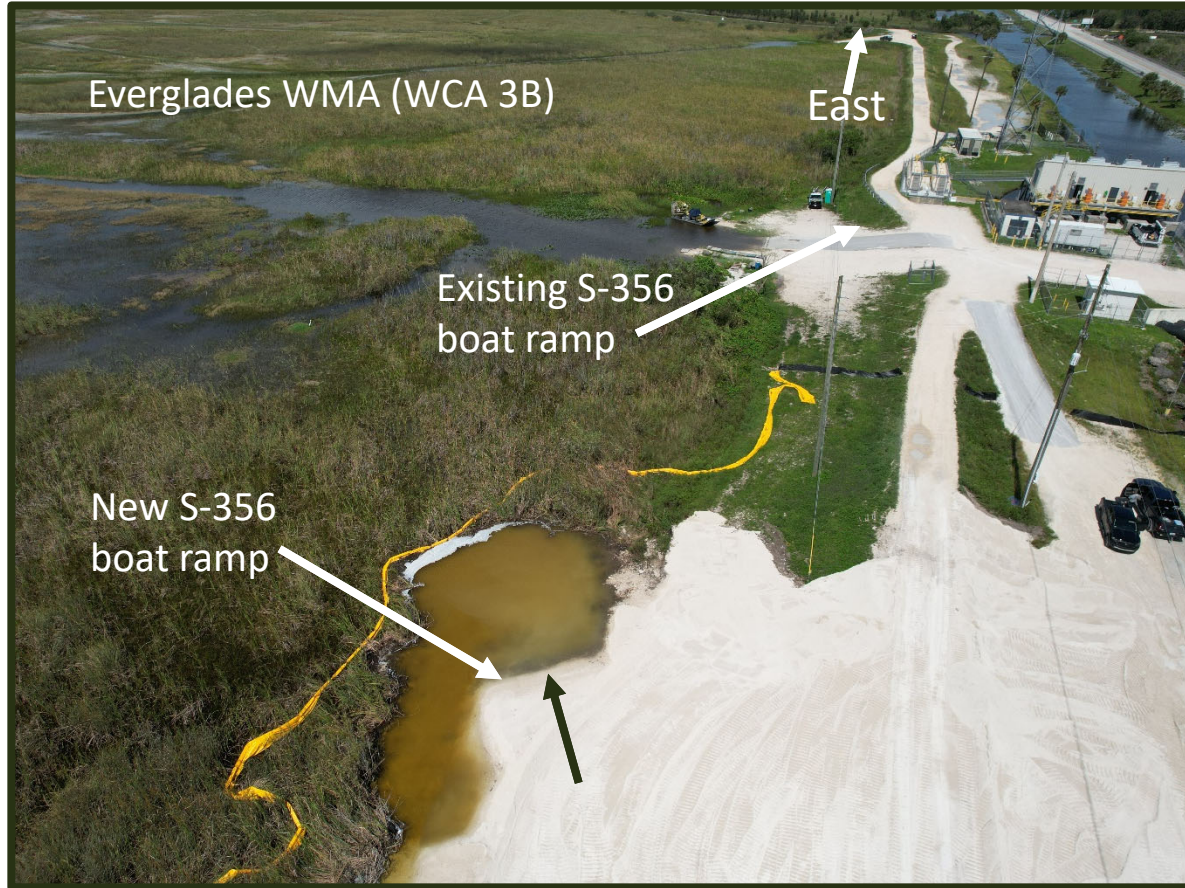


Presenter: Michael Cheek

CONCRETE VAULT BATHROOM INSTALLED HICKORY HAMMOCK EQUESTRIAN CAMPGROUND KISSIMMEE RIVER PUA



S-356 BOAT RAMP ON TAMiami TRAIL (WCA 3B) MIAMI-DADE COUNTY

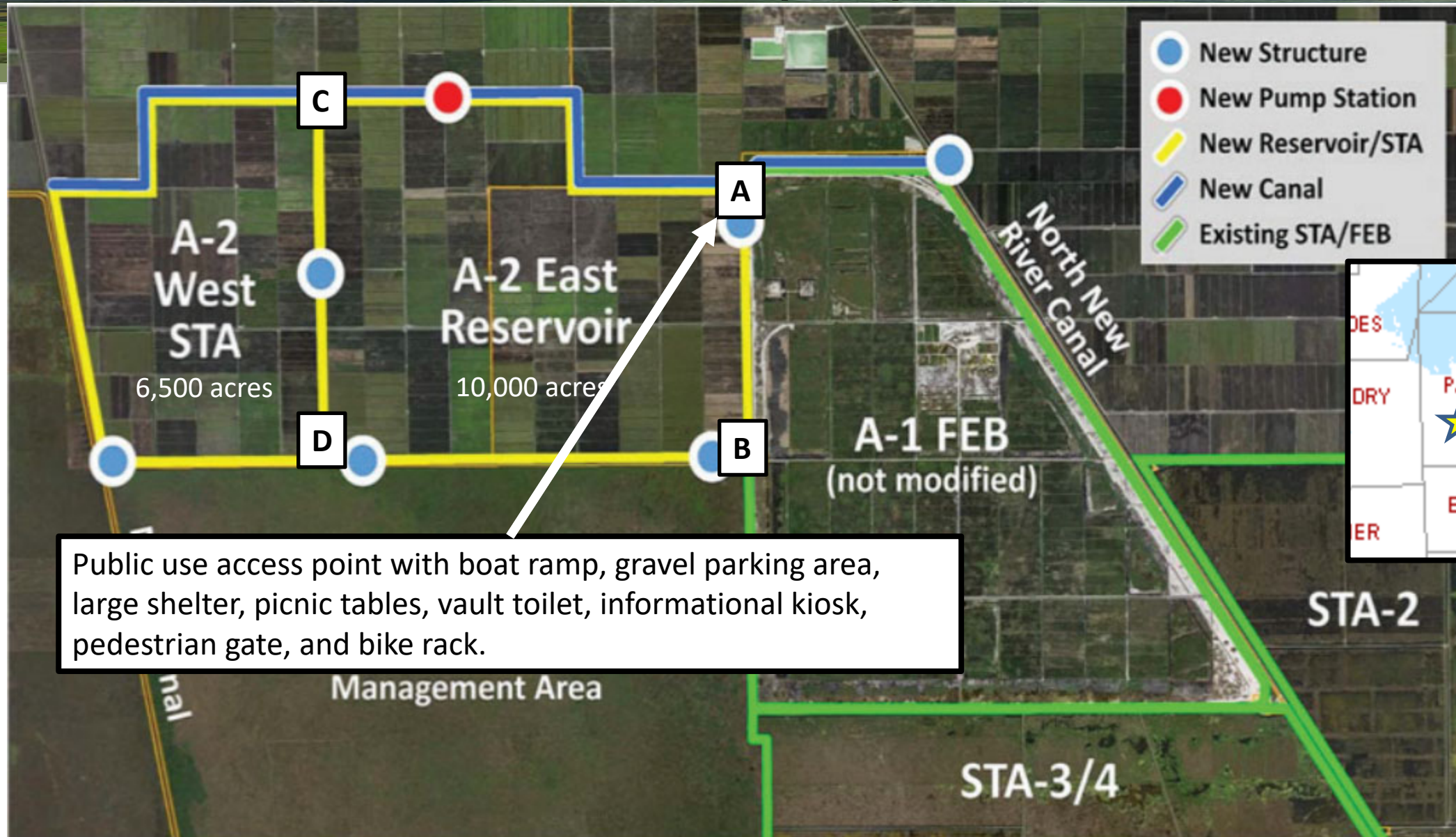


- Anticipated completion by end of July 2023
- Replacing existing ramp during construction of new S-356 pump station

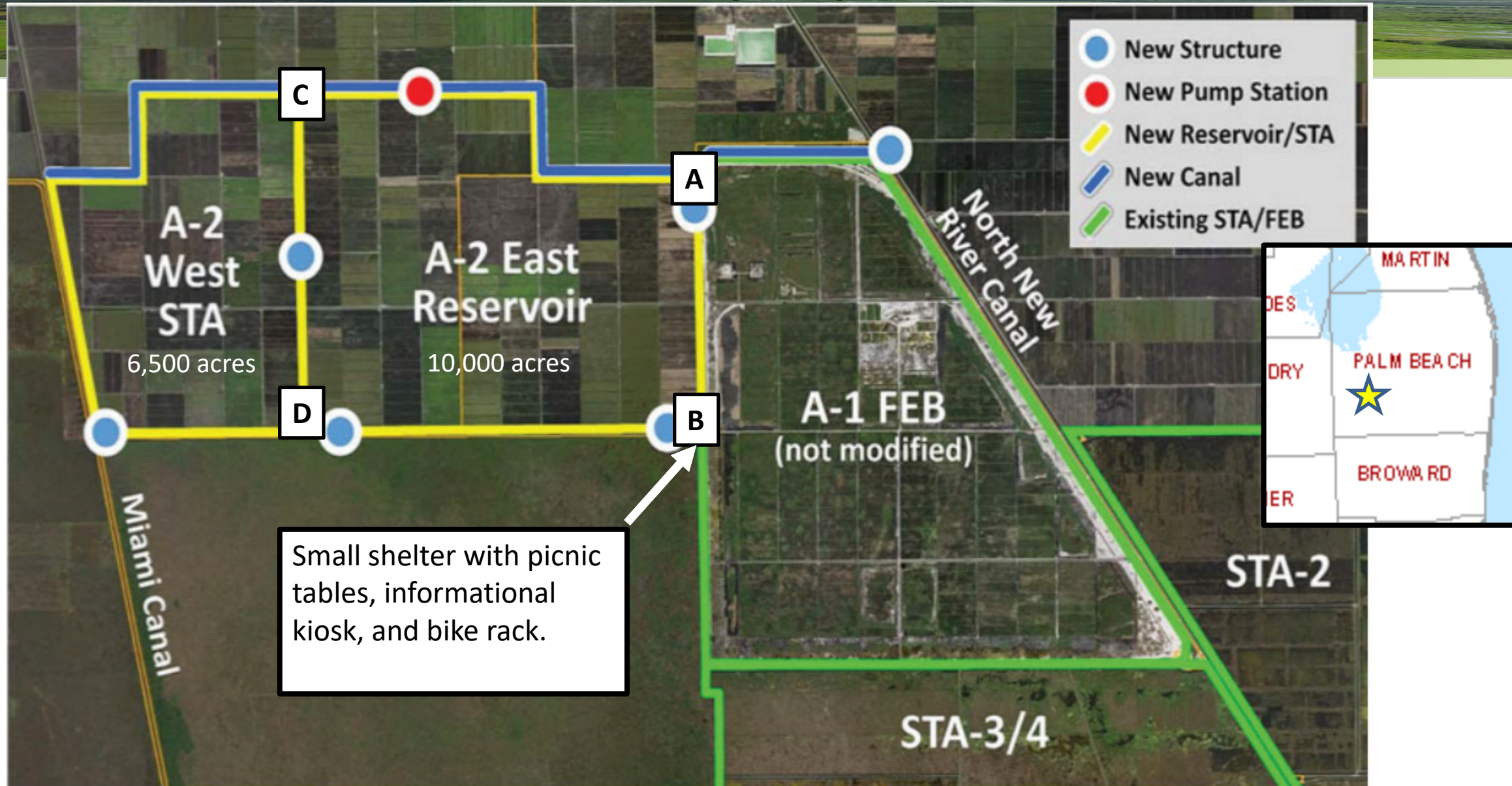
EVERGLADES AGRICULTURAL AREA (EAA) A-2 RESERVOIR AND STA



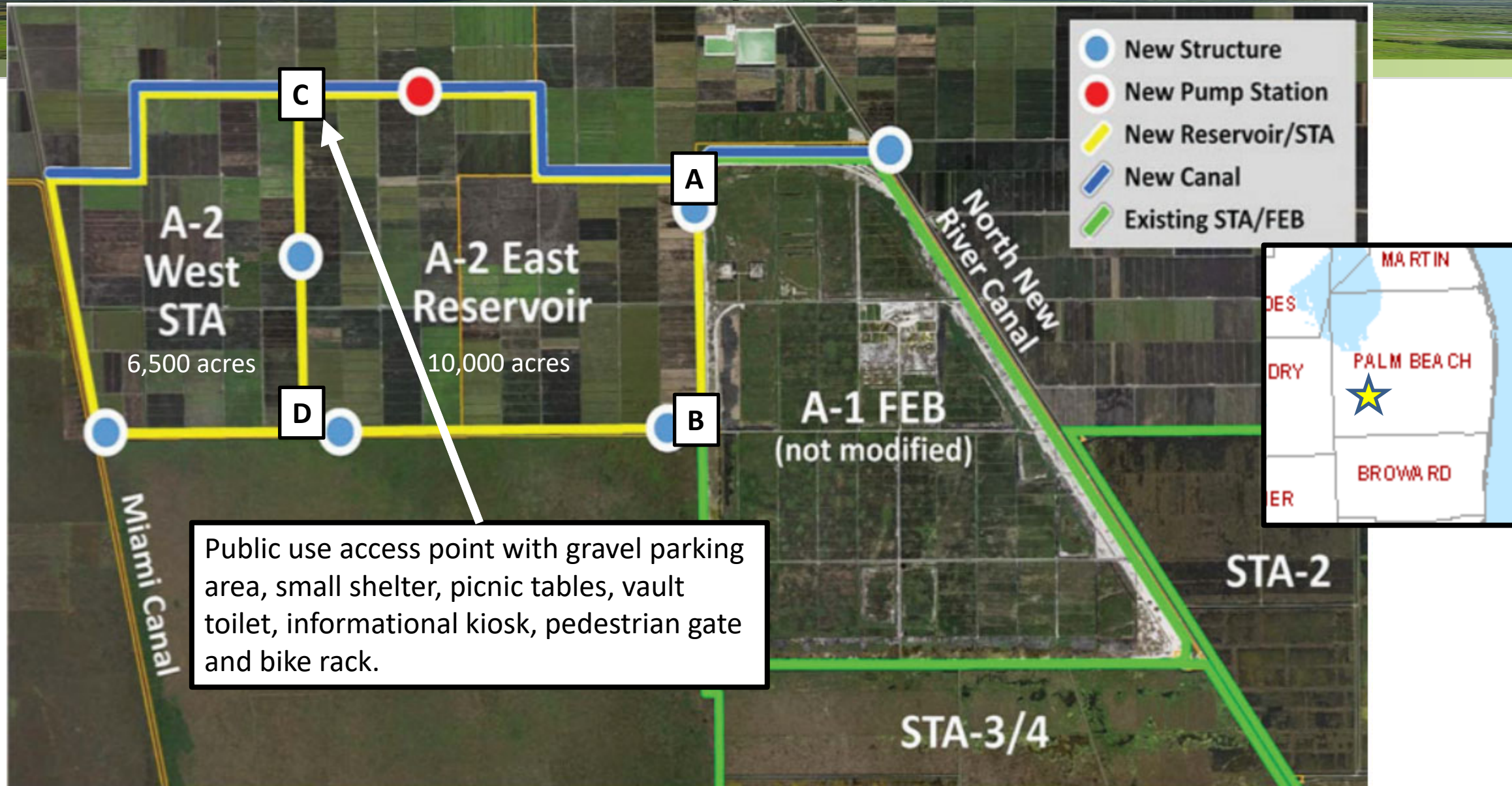
EVERGLADES AGRICULTURAL AREA (EAA) A-2 RESERVOIR AND STA



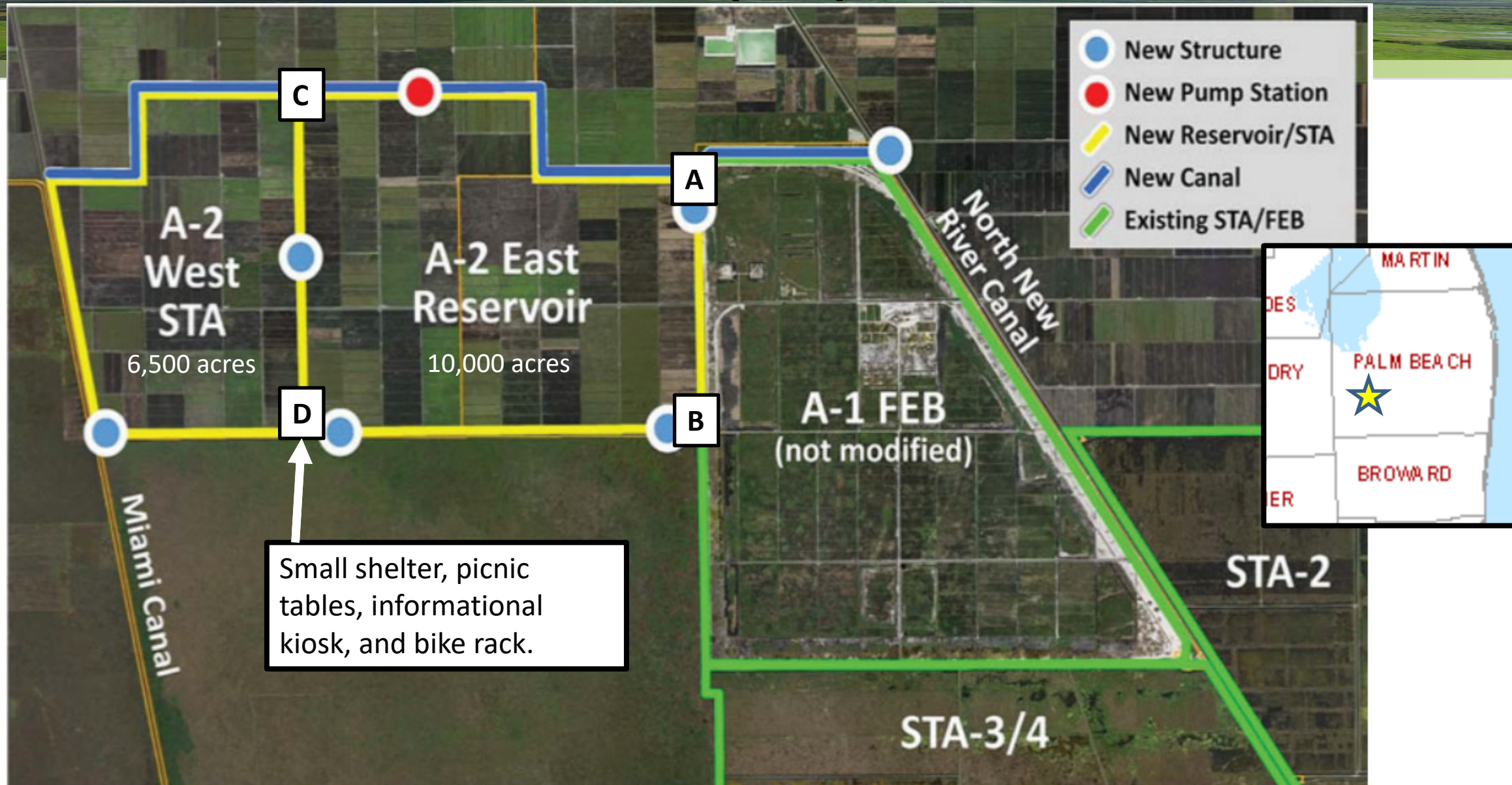
EVERGLADES AGRICULTURAL AREA (EAA) A-2 RESERVOIR AND STA



EVERGLADES AGRICULTURAL AREA (EAA) A-2 RESERVOIR AND STA



EVERGLADES AGRICULTURAL AREA (EAA) A-2 RESERVOIR AND STA



EAGLE SCOUT PROJECT AT CREW FLINT PEN STRAND TRAILHEAD



- 50+ volunteers for 500+ volunteer hours total
- 100% donated materials
- County building permit pulled

EAGLE SCOUT PROJECT AT CREW FLINT PEN STRAND TRAILHEAD



EAGLE SCOUT PROJECT AT CREW FLINT PEN STRAND TRAILHEAD



Presenter: Michael Cheek

EAGLE SCOUT PROJECT AT CREW FLINT PEN STRAND TRAILHEAD

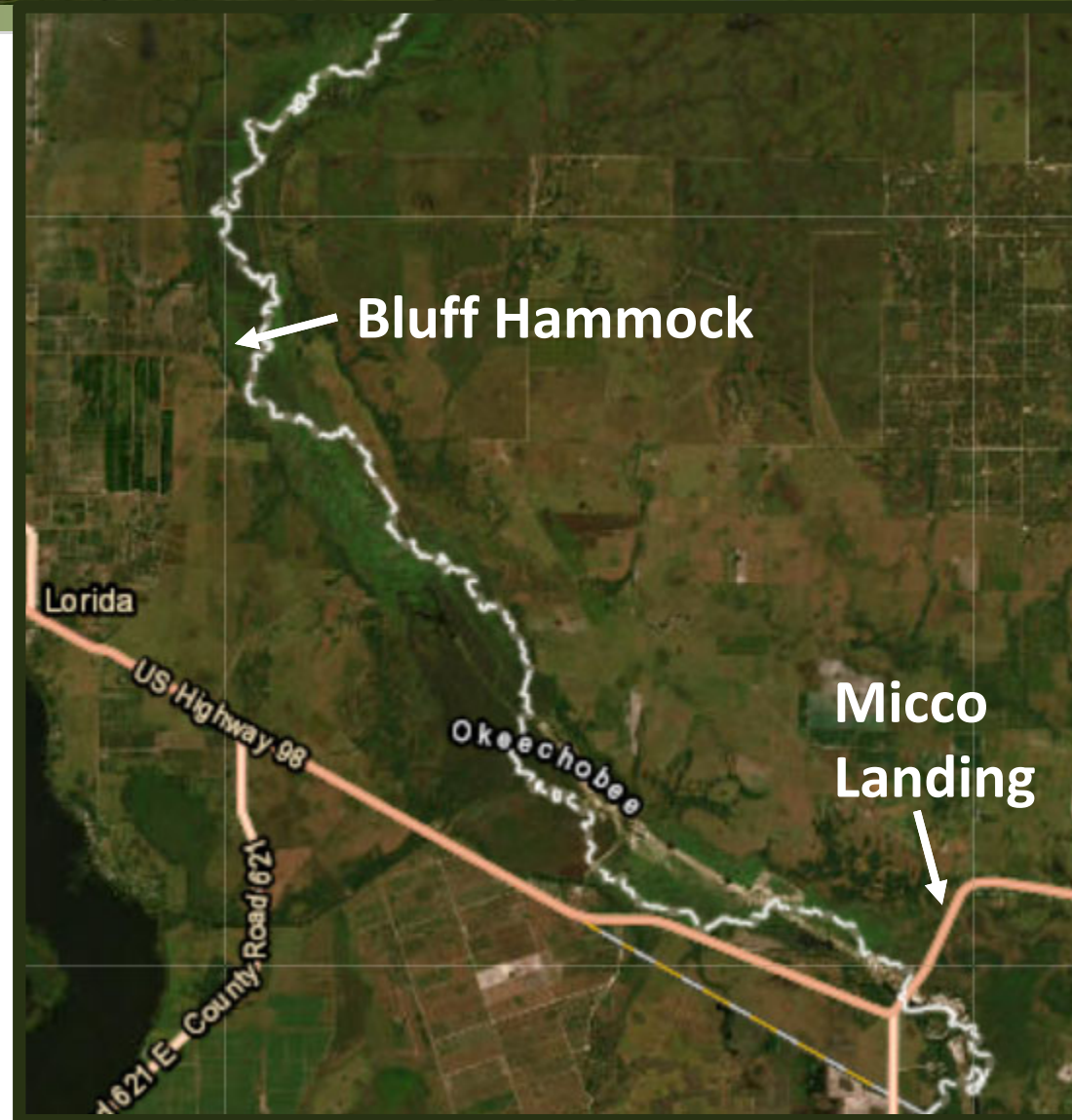


Completed Feb. 15, 2023

Presenter: Michael Cheek

VOLUNTEER WORKDAY ON THE KISSIMMEE RIVER FLOODPLAIN

- Two locations: Micco Landing and Bluff Hammock
- Organized by members of **Florida Sportsman's Conservation Association** and **Lake Okeechobee Airboat Association**, family and friends
- On Friday and Saturday May 5 and 6, 2023, volunteers removed a dilapidated boardwalk, old barbed-wire fencing, wood, and metal debris from the floodplain



VOLUNTEER WORKDAY ON THE KISSIMMEE RIVER FLOODPLAIN

Planning the day at Micco Landing staging area



Buggies heading out onto the floodplain



VOLUNTEER WORKDAY ON THE KISSIMMEE RIVER FLOODPLAIN

700' of dilapidated old Florida Trail Boardwalk needed removal near Bluff Hammock



VOLUNTEER WORKDAY ON THE KISSIMMEE RIVER FLOODPLAIN

- Dragging an old culvert from the floodplain with buggy
- Debris like this can be very hazardous to boaters when the floodplain is inundated



VOLUNTEER WORKDAY ON THE KISSIMMEE RIVER FLOODPLAIN



Mini-excavator pulling boardwalk pilings



Mini-excavator loading trailer with boardwalk segments

VOLUNTEER WORKDAY ON THE KISSIMMEE RIVER FLOODPLAIN



VOLUNTEER WORKDAY ON THE KISSIMMEE RIVER FLOODPLAIN



VOLUNTEER WORKDAY ON THE KISSIMMEE RIVER FLOODPLAIN



VOLUNTEER WORKDAY ON THE KISSIMMEE RIVER FLOODPLAIN

- **46** volunteers, **8+** hours, for **368** volunteer hours total
- @ \$29.41/hour, total in-kind services= **\$10,823**
- **8** buggies
- **2** trailers
- **1** mini-excavator
- **1** skid steer



THANK YOU ALL FOR YOUR EFFORTS!

COMMENTS/QUESTIONS?

Zoom:

- If you're participating via Zoom – use the Raise Hand feature

Phone:

- If you're participating via Phone –
 - *9 Raises Hand
 - *6 Mutes/Unmutes

THANK YOU!

MCHEEK@SFWMD.GOV