



SETTLEMENT AGREEMENT REPORT

WY2021 Annual
Shark River Slough
Compliance

Chelsea Qiu, P.E., Ph.D.

Lead Engineer
Compliance Assessment & Reporting
Section
Water Quality Bureau

Technical Oversight Committee
May 10, 2022



sfwmd.gov

SUMMARY

Month	Geometric Mean TP Concentration (ppb)	Long-Term Level (ppb)	Mean Stage (feet NGVD29)	Number of Samples	
Arthur R. Marshall Loxahatchee National Wildlife Refuge					
Jul 2021	11.1	12.5	16.00	8	
Aug 2021	8.6	9.7	16.49	13	
Sep 2021	7.0	8.4	16.79	13	
12-Month Period Ending	Total Flow (kac-ft)	12-Month TP FWMC (ppb)	Long-Term Limit (ppb)	Percent of Sampling Events Greater than 10 ppb	
				Observed (%)	Guideline (%)
Everglades National Park – Shark River Slough					
Jul 2021	1,853.0	7.8	7.6	34.6	40.1
Aug 2021	1,780.0	7.9	7.6	46.2	40.1
Sep 2021	1,733.0	8.2	7.6	50.0	40.1
Everglades National Park – Taylor Slough and Coastal Basins					
Jul 2021	430.1	5.4	11.0	2.1	53.1
Aug 2021	410.1	5.5	11.0	2.0	53.1
Sep 2021	399.5	5.6	11.0	2.1	53.1

SRS - Method 1.5 computed as S12s+[S333+S355A+S355B+minimum(S356,S335)-S334]

S334 flow is not excluded from the total flow for long-term limit calculations.

TS and CB - Method 3 computed as (S332D-S332DX1-S328)+S328+G737+S18C.

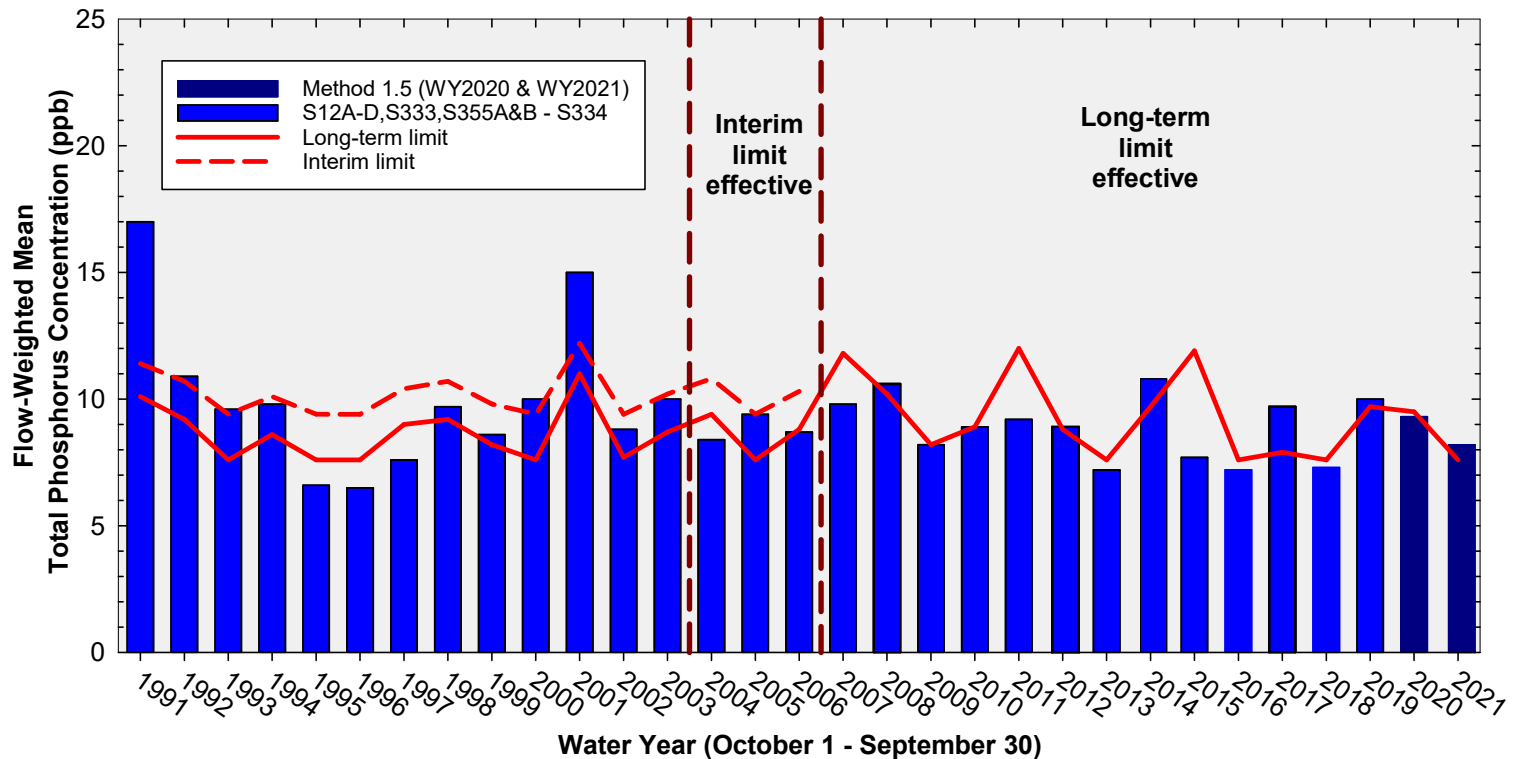
Shark River Slough TP Concentration Compliance Tracking

12-Month Period	Total Flow (kac-ft)	Flow-Weighted Mean TP Concentration (ppb)	Long-Term Limit (ppb) <i>Effective 12/31/2006</i>	Percent of Sampling Events Greater than 10 ppb	
				Observed (%)	Guideline (%)
Aug 2020 - Jul 2021	1,853.0	7.8	7.6	34.6	40.1
Sep 2020 - Aug 2021	1,780.0	7.9	7.6	46.2	40.1
Oct 2020 - Sep 2021	1,733.0	8.2	7.6	50.0	40.1

Method 1.5 FWMC computed as $S12s + (S333 + S355A\&B + \text{minimum}(S356, S335) - S334)$ using all flow and TP grabs on bi-weekly compliance sampling dates.

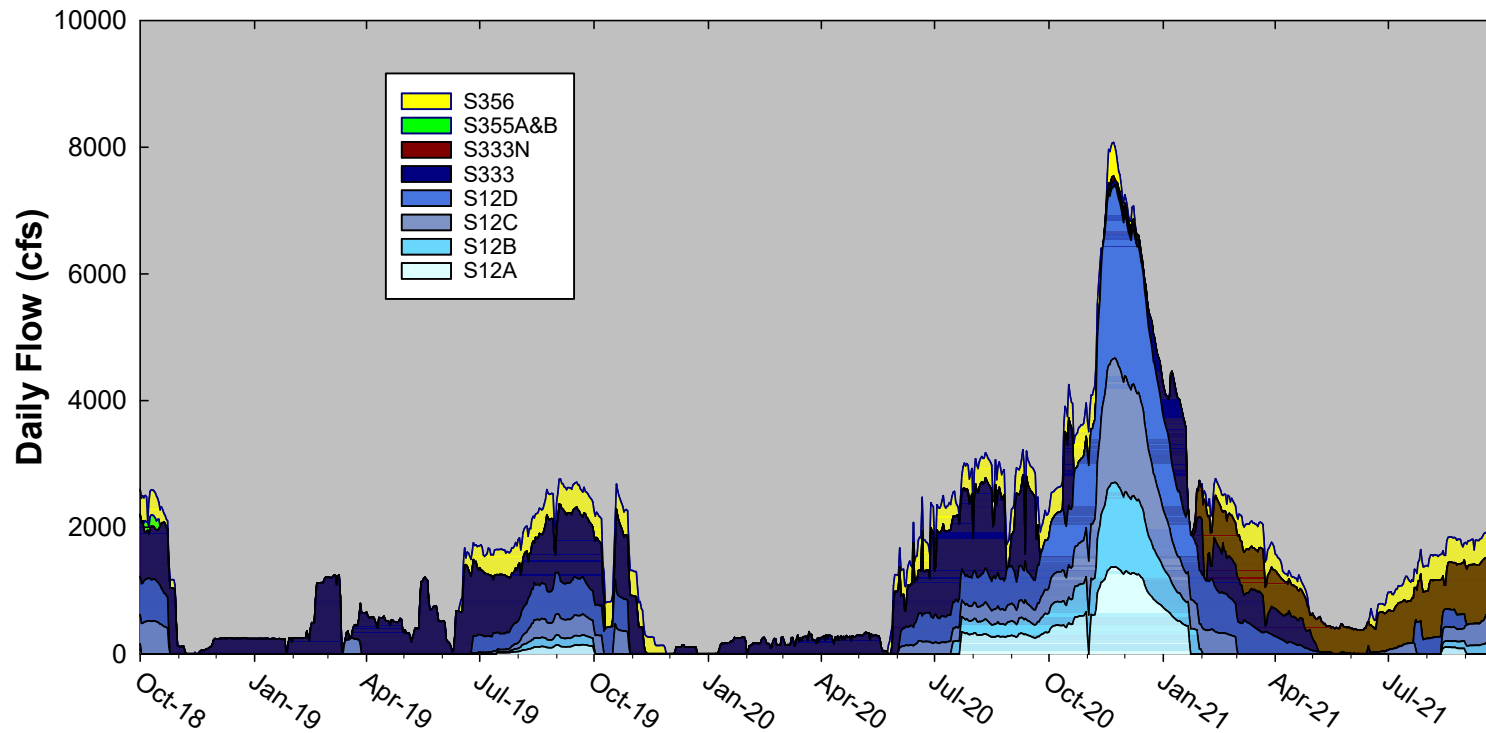
S334 flow was not excluded from the flow for long-term limit calculations.

Annual Flow-weighted Mean Concentrations Inflows to ENP through Shark River Slough

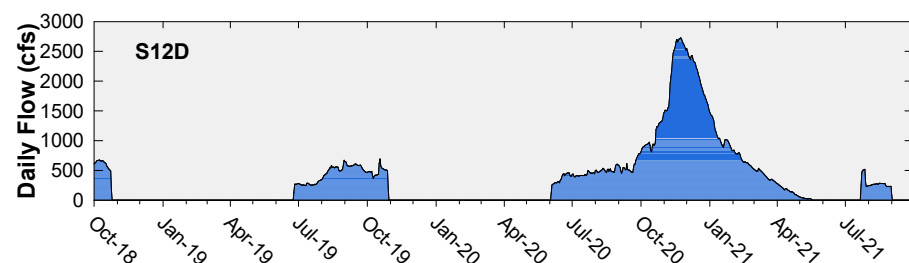
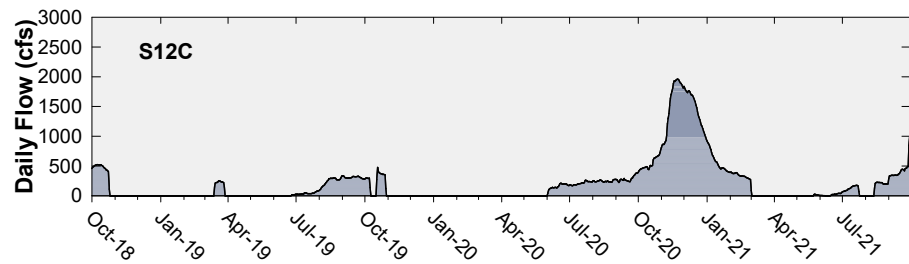
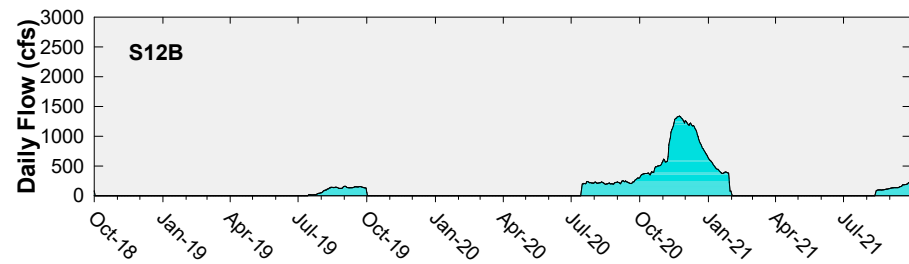
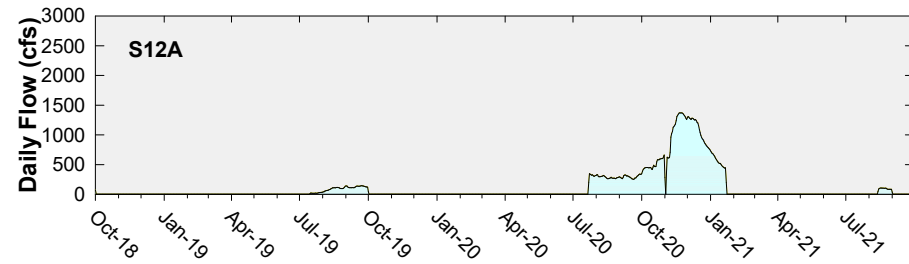


Water year FWMC compared to the TP interim and long-term limits

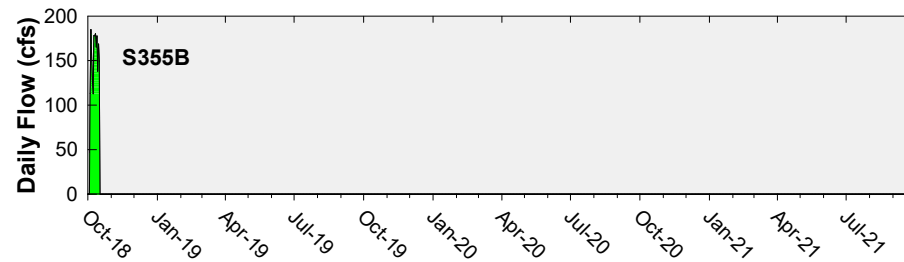
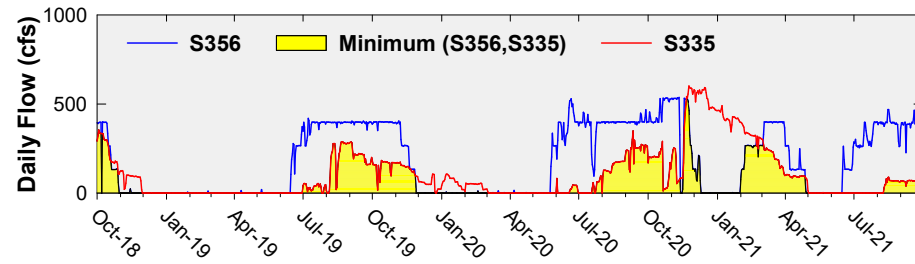
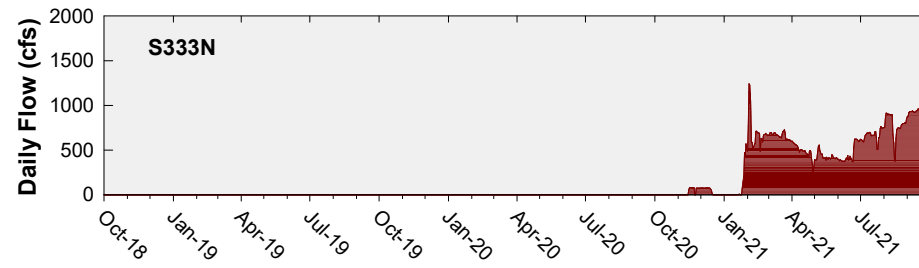
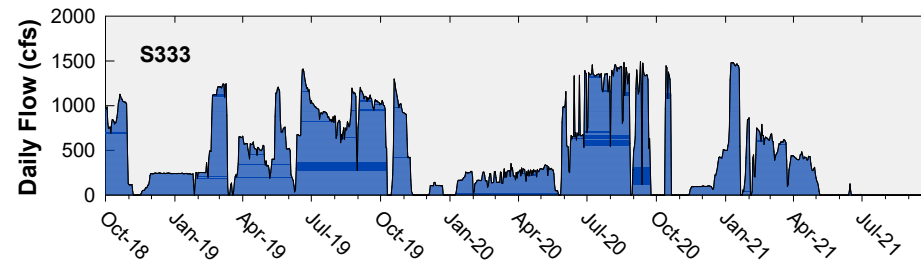
Shark River Slough Structure Daily Flows



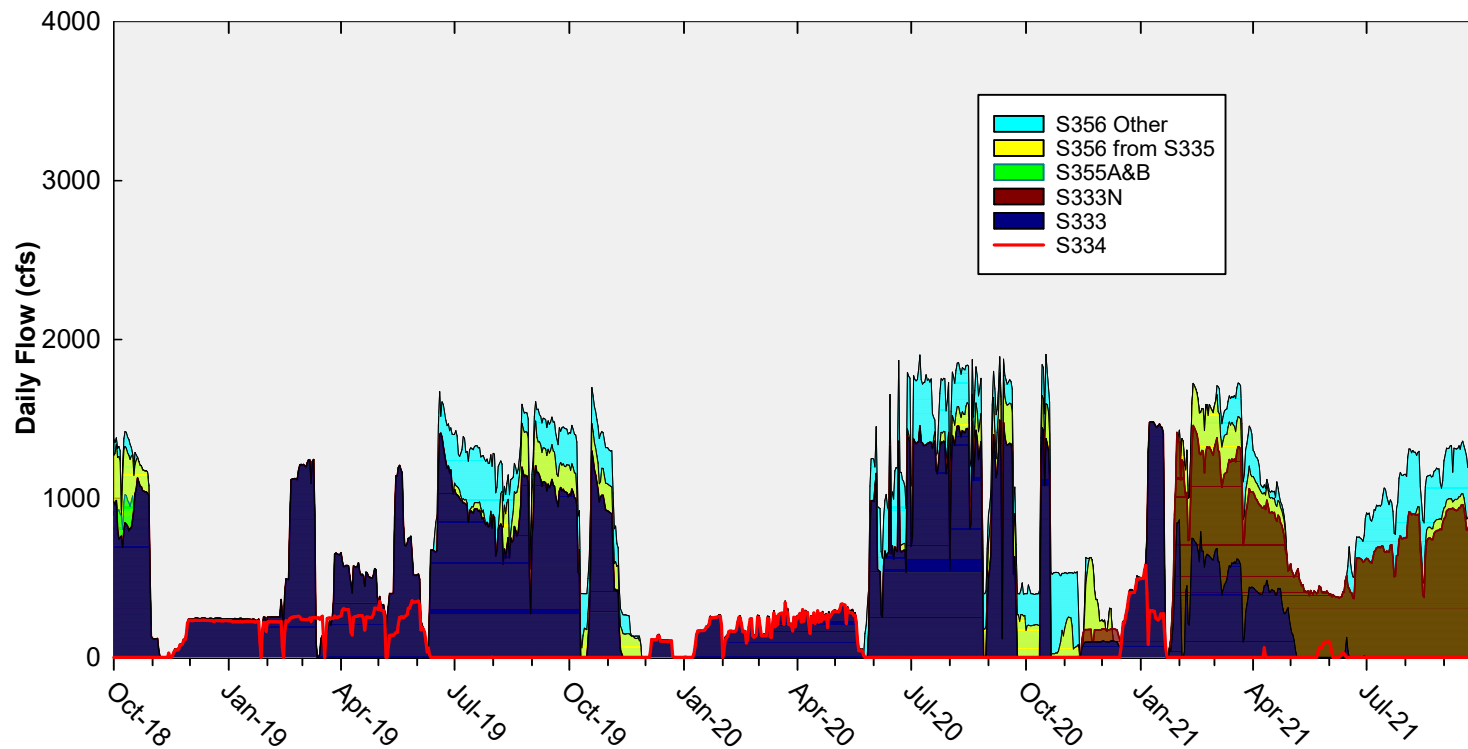
Daily Flows at S12 Structures to Shark River Slough



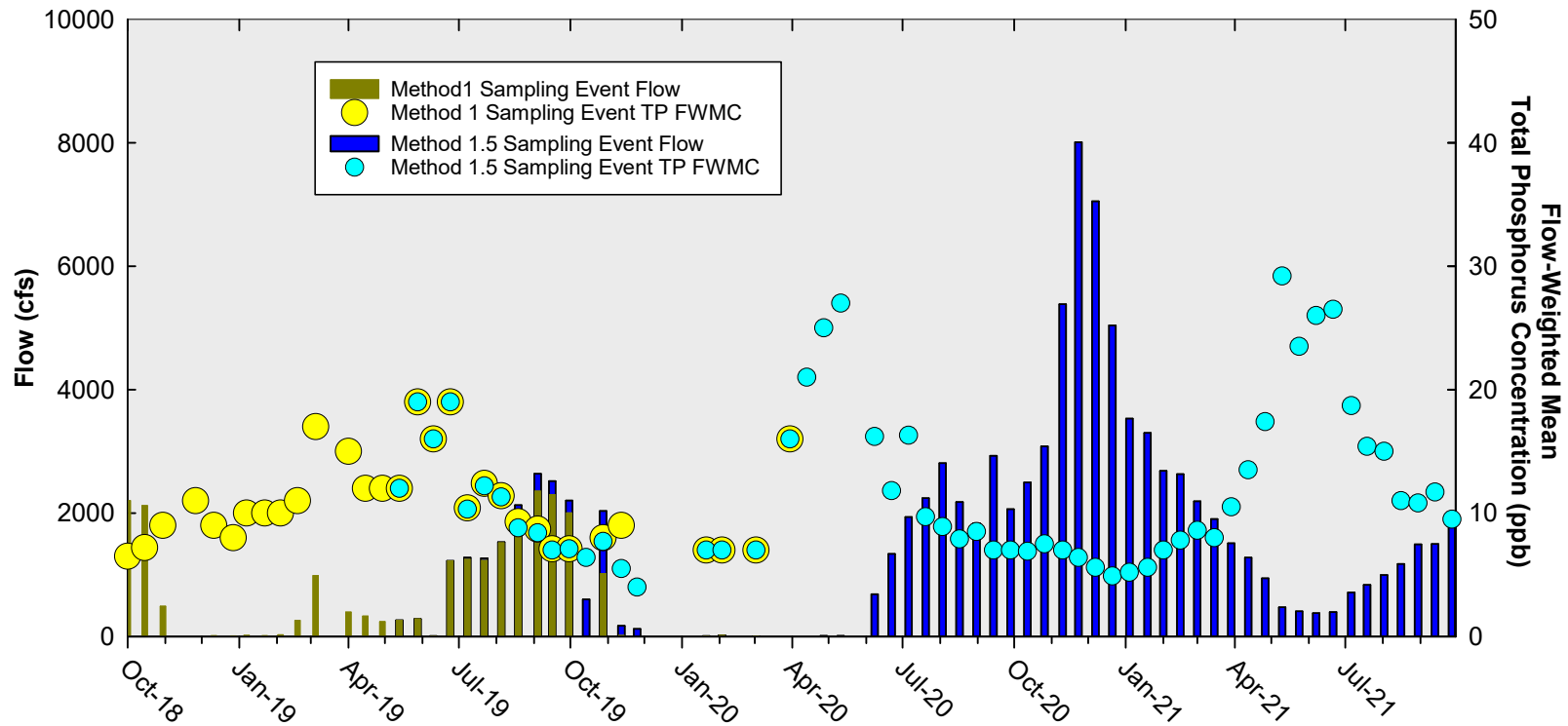
Daily Flows at Individual Inflow Structures to Shark River Slough



Daily Flows Into Shark River Slough through S333, S355A&B, and S356 and Out through S334

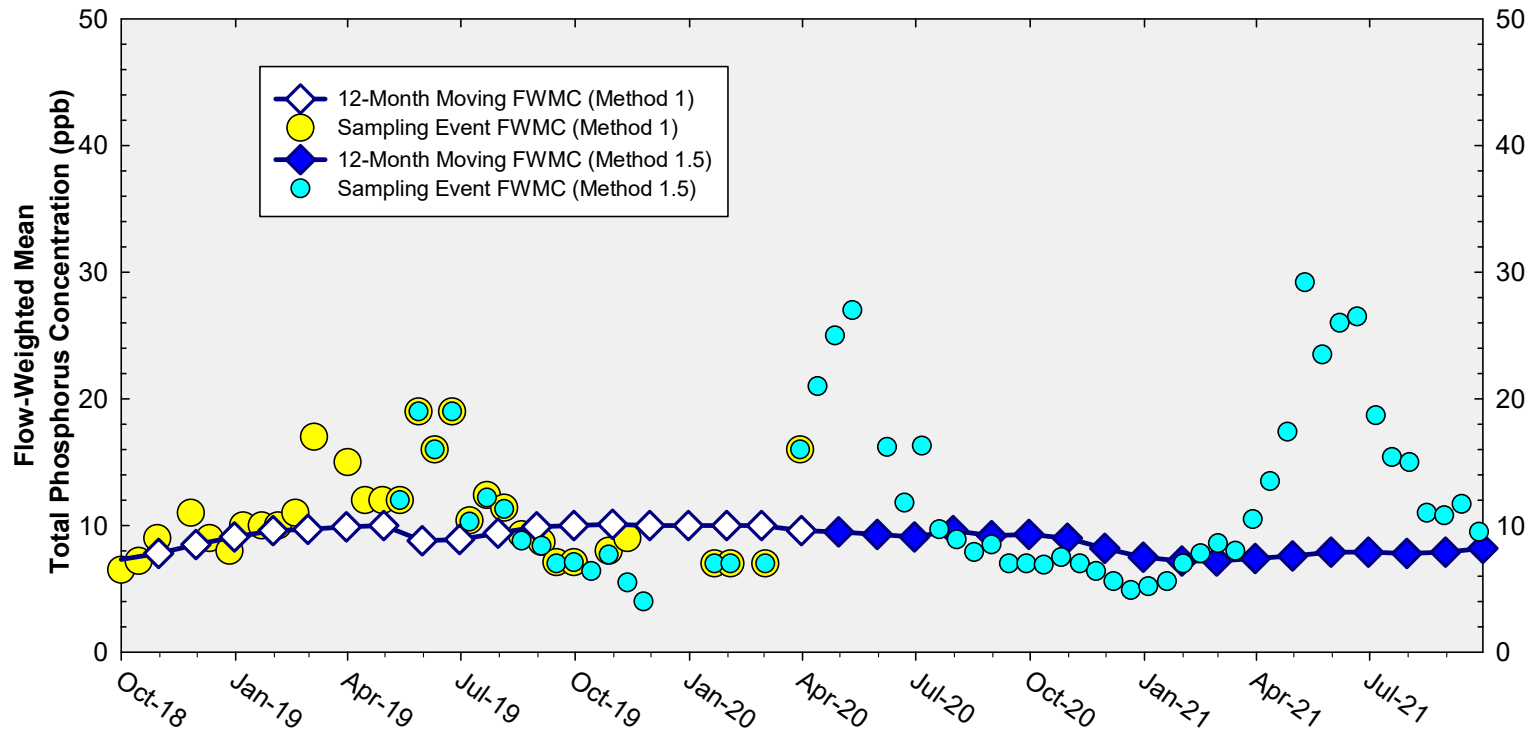


Shark River Slough Sampling Event Flow and FWMC



**Flow to Shark River Slough and the corresponding TP FWMCs
for individual sampling events**

Flow-Weighted Mean Concentrations Inflows to ENP through Shark River Slough



The composite TP concentration and 12-month FWMC at the end of each month for each sampling event

Thank You

