

Technical Oversight Committee
August 21, 2012

Discussion of Tambr105 Monitoring Requirements

Pete Rawlik

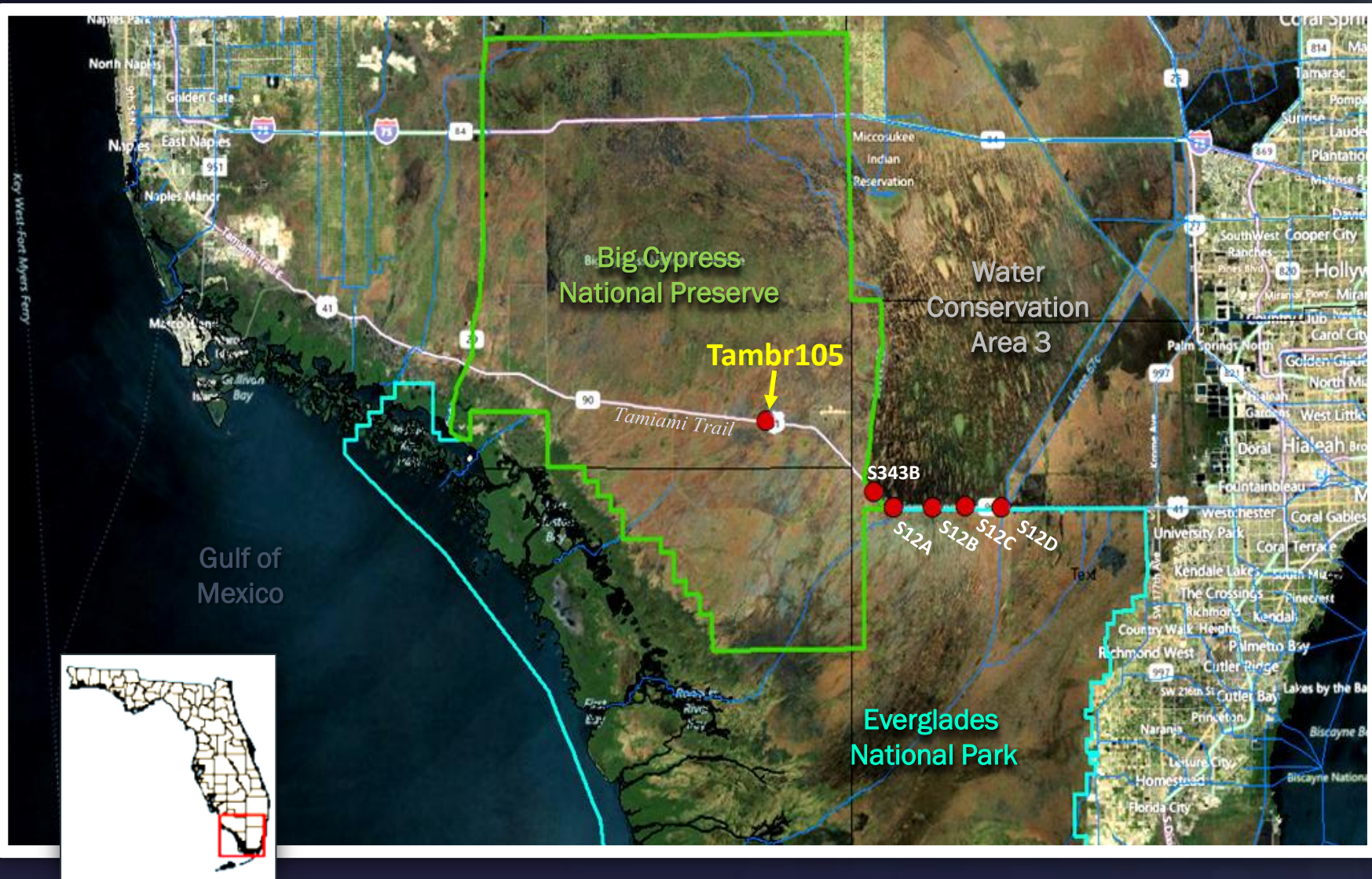
Sr. Environmental Scientist
Water Quality Monitoring Section



Settlement Agreement

- Appendix D, page 4 requires
 - ‘All water control structures for the Refuge, the Park, and the WCAs will be monitored as is done by the present SFWMD CAMB, ENP and LEC programs.’
 - At that time, Project ENP included station TAMBR105, at a bridge in Big Cypress National Preserve (BCNP).
 - BCNP is not part of the Refuge, Park or the WCAs

Location of TAMBR105



Current Monitoring Regime

- Modified from original set during the creation of comprehensive monitoring plan for ENP Inflows (PIN)
- Biweekly if Flowing Otherwise Monthly
 - Physical Parameters (DO, pH, Temperature, Specific Conductance)
 - TP04, OP04, TKN, Nox,
 - Na, K, Ca, Mg, Cl, Hardness, TSS
- Quarterly
 - Turbidity
 - S04
 - Pesticides



Monitoring History

- 1985 Initiated as part of Project ENP
- 1991 Project ENP listed in Settlement Agreement
- 1999 Miami-Dade County DERM contracted to monitor Project ENP
- 2006 Redesigned under PIN
- 2009 Monitoring of TAMBR105 taken over by BCNP staff

BCNP Monitoring Regime

- SFWMD and BCNP are partners in monitoring water quality within the preserve
- In 2012, facing budgetary constraints, BCNP shifted from monitoring marsh stations to monitoring structures along roadways, including Loop Road
- BCNP monitoring includes many stations downstream of TAMBR105
- Sampling concentrated from June to December, with a target interval of 4 to 8 weeks, depending on hydrological and meteorological factors

BCNP Monitoring along the Loop Road

Parameters

DO

pH

Temperature

Specific

Conductance

TPO4

OPO4

TKN

Nox

NO2

NH4

Na

K

Ca

Mg

Cl

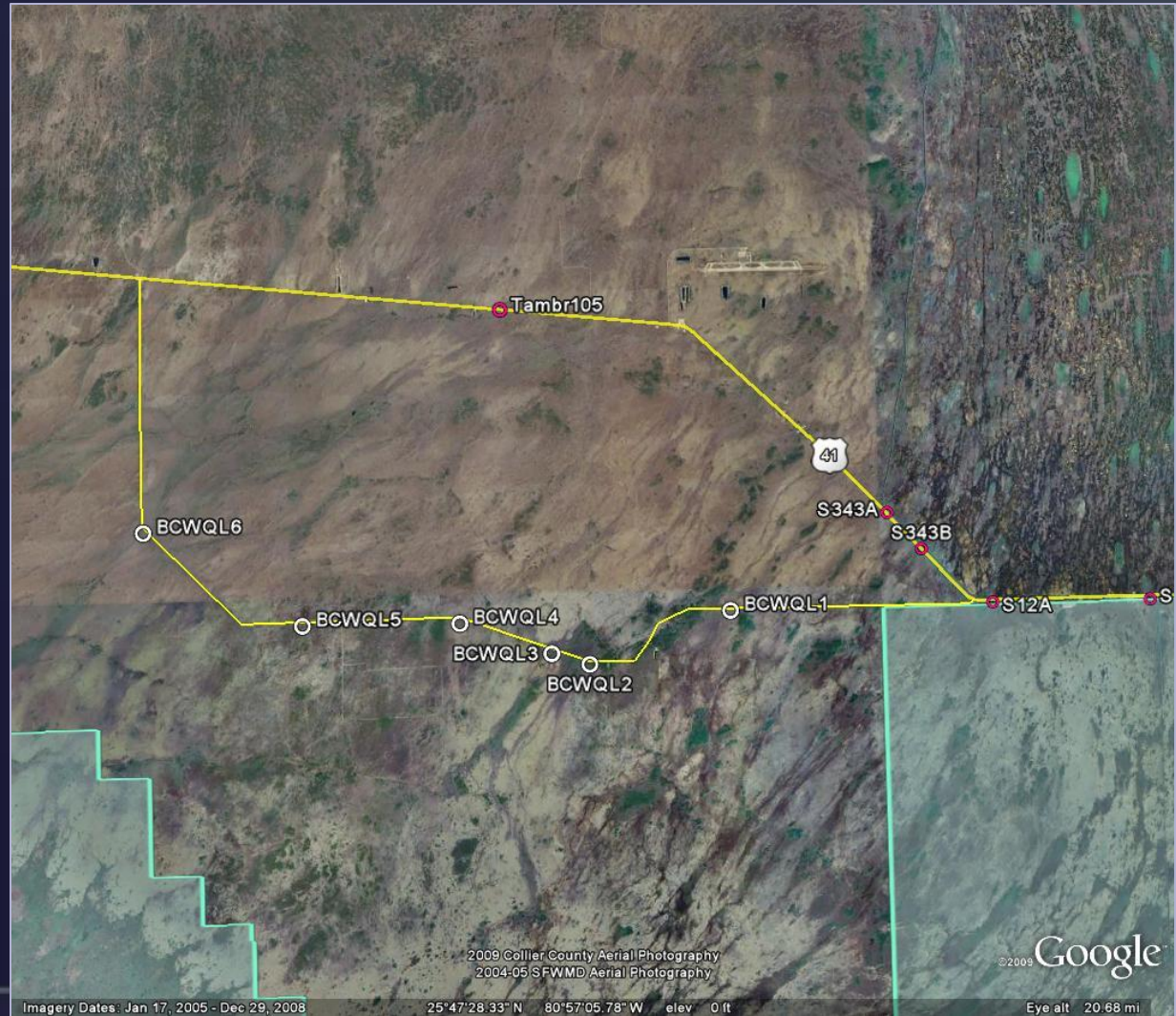
SiO2

SO4

Hardness

Alkalinity

TDS



Basis for Position

- Station is not needed for SA compliance calculation
- Station is not within the Everglades Protection Area
- Heavy traffic on Tamiami Trail presents a dangerous situation for sampling crews
- Downstream stations meet BCNP needs and are closer to where overland flows would enter ENP
- Is Tambr105 providing useful information to the Park that the BCNP won't provide?



District Conclusion

- Tambr105 is not required by the Settlement Agreement
- BCNP is collecting a network of downstream stations providing water quality data representative of the area



Thank You

Discussion of Tambr105 Monitoring Requirements

Pete Rawlik

Sr. Environmental Scientist

Water Quality Monitoring Section

