



SFWMD Permit Compliance Tracking

South Miami-Dade Water Issues Coordination Meeting

May 4, 2010

Marjorie G. Craig, P.E.

***Environmental Resource Compliance Division
Environmental Resource Regulation Dept.***

SFWMD COMPLIANCE OVERVIEW

- Regulatory compliance reviews data submittals required as a part of the following:
 - Water Use Permits
 - Environmental Resource Permits
 - Consent Agreements
 - Mining Depth Determinations
 - Power Plant Certifications
 - Wetland Banks and Mitigation Requirements
 - Dewatering Permits

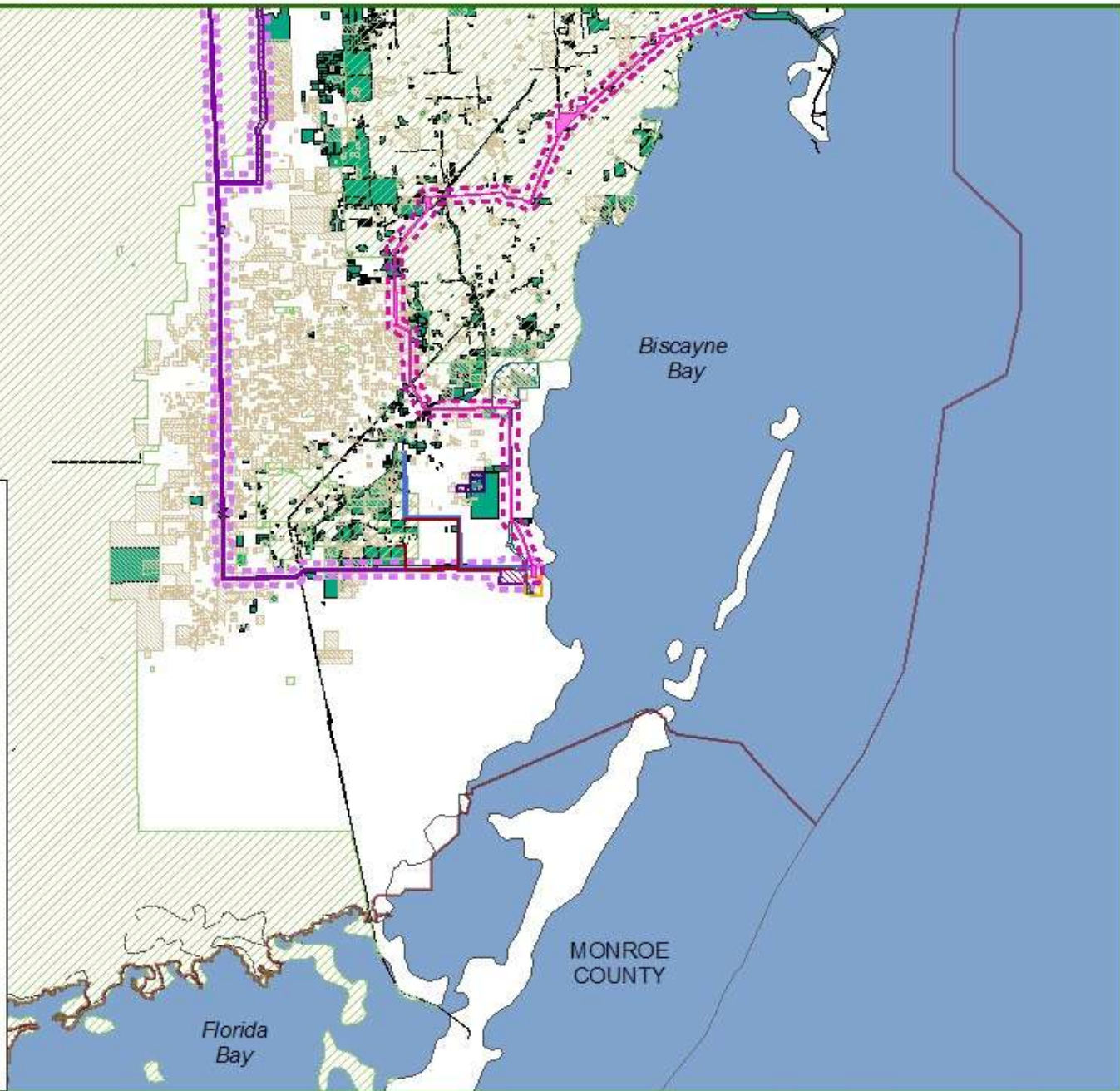


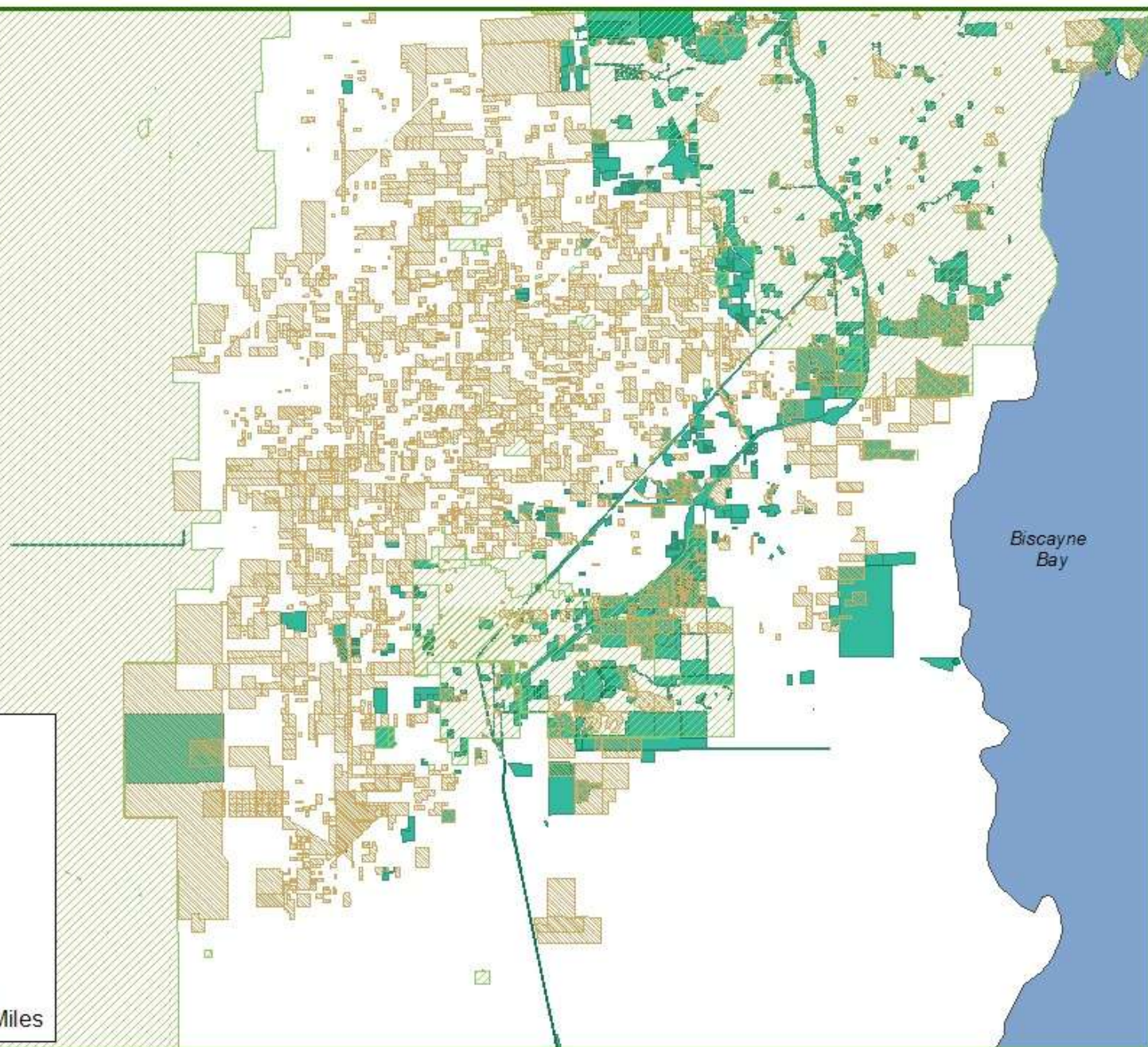
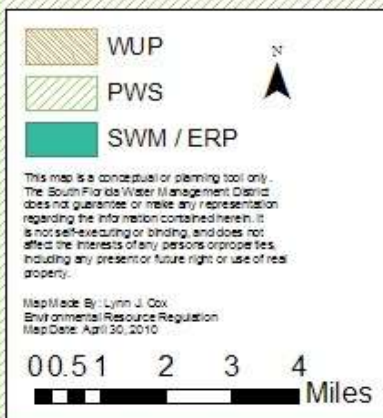
- East Corridor Project
- East Corridor QuarterMile Pro
- FPL Owned Fill Source
- Improved Roads Proposed Corridor
- Potable Water Line Corridor
- RW Pipeline Golder Corridor
- TP6&7 Project
- West Corridor Project
- West Corridor QuarterMile Pro
- WUP
- PWS
- SWM / ERP

This map is a conceptual or planning tool only. The South Florida Water Management District does not guarantee or make any representation regarding the information contained herein. It is not self-executing or binding, and does not affect the interests of any persons or properties, including any present or future right or use of real property.

Map Made By: Lynn J. Cox
Environmental Resource Regulation
Map Date: May 1, 2010

0.5 2 3 4
Miles





EXAMPLES OF DATA RECEIVED

- Water use (pumping) data
- Water quality data
- Water level data
- Wetland site inspections
- Wetland mitigation plans
- Compliance reports (primarily water use permits)
- Reclaimed water availability
- Water resource project status

COMPLIANCE DATA

- Compliance data stored in a South Florida Water Management District Database
- Staff log in data
- Staff check data against required conditions and enter it into database
- For water use permits, documents are scanned & attached to permit in e-Permitting
- Technical staff review data, evaluate, make recommendations



HOW DATA COLLECTED IS USED

- To ensure compliance with the permit, agreement, or other District instrument
- Analyses & comparison with local governments state-required comprehensive planning requirements
- Data is used in local and regional water resource modeling for
 - Compliance and/or potential impacts
 - Water resource planning





Questions?