



SOUTH FLORIDA WATER MANAGEMENT DISTRICT

January 19, 2011

Florida Department of Environmental Protection
Central District
3319 Maguire Boulevard, Suite 232
Orlando, Florida 32803-3767

Dear Sir/Madam:

Subject: Permit No. ERP49-187636-001

***Report to the Florida Department of Environmental Protection, Central Florida
Beltway Mitigation, Western Beltway/S.R. 429, Part C***

Enclosed is the Report to the Florida Department of Environmental Protection (DEP) for Western Beltway mitigation. The Report summarizes activities conducted by the South Florida Water Management District (SFWMD) resulting from mitigation funding provided through Section 338.250, Florida Statutes, Central Florida Beltway Mitigation from October 1, 2007 through September 30, 2010. The funding was generated from environmental impacts associated from the construction of the Western Beltway (Beltway), S.R. 429, Part C, for which SFWMD would receive approximately \$9.4 million from the Turnpike District and Orlando-Orange County Expressway Authority (OOCEA). To date, SFWMD has received approximately \$8.2 million in funding and land from the Turnpike District.

During this reporting period, the mitigation supported \$170,739.12 in restoration expenditures including exotic control, staff costs, security patrol services, miscellaneous office, tool and equipment supplies in support of the project, mechanical vegetation control and storage rental. SFWMD will continue to pursue options in accordance with the DEP-approved mitigation plan.

If you have any questions, please contact me at your earliest convenience.

Sincerely,

A handwritten signature in black ink, appearing to read "Steve Coughlin".

Steve Coughlin, Director
Land Stewardship Program
Vegetation & Land Management Department

SC/mm
Enclosure

c: Marjorie Moore (SFWMD) w/enclosure
Ayounga Riddick (SFWMD) w/enclosure
Scott Kamien (PBS&J) w/enclosure by e-mail

Report to the Florida Department of Environmental Protection

This Report is submitted in accordance with the Florida Department of Protection (DEP) permit No. ERP49-0187636-001 for Central Florida Beltway Mitigation. The Report summarizes activities conducted by the South Florida Water Management District (SFWMD/District) resulting from mitigation funding provided through section 338.250, Florida Statutes, Central Florida Beltway Mitigation for period October 1, 2009 – September 30, 2010 (FY 2010). The funding was generated from environmental impacts associated from the construction of the Western Beltway (Beltway), S.R. 429, Part C, for which SFWMD would receive approximately \$9.4 million from the Turnpike District and Orlando-Orange County Expressway Authority (OOCEA), also known by the SFWMD as Shingle Creek Phase III. To date, SFWMD has received approximately \$8.2 million in funding and land (detailed below, Section 1) from the Turnpike District. The balance of \$1.2 million was allocated for the purchase of mitigation bank credits and a cash payment or land donation anticipated from OOCEA for 35 acres of skink habitat.

In consultation with the Environmental Advisory Group to the OOCEA and Turnpike District, SFWMD developed a Conceptual Mitigation Plan (Plan) which was approved by the SFWMD's Governing Board on October 11, 2001. The Plan, subsequently accepted by DEP on December 4, 2001, identified several mitigation options to address environmental impacts from the Beltway's construction. These options included 1) land acquisition, 2) mitigation banking, and 3) hydrological restoration/enhancement. SFWMD continues to pursue these options and has implemented significant elements of the Plan since 2001, which are summarized below. Other funding sources, including previous phases of beltway mitigation (Shingle Creek Phase II), are used to supplement beltway-funded projects, when appropriate.

1. Land Acquisition

Shortly after the Plan was accepted by DEP, SFWMD received \$6,022,800 from the Turnpike District for impacts related to the Turnpike District's portion of Western Beltway construction. The Summary of Mitigation Balances by Project Report (financial summary report) dated September 30, 2010, prepared by the District's accounting office, indicates a balance of \$1,936,000.02 available in the Shingle Creek Phase III land acquisition fund. During the period of October 1, 2009 – September 30, 2010, there was \$622.44 in expenditures out of the Shingle Creek Phase III land acquisition account for salaries associated with the SFWMD's intended contribution towards the acquisition of the 1.6 acre Harbor Oaks marina site on Shingle Creek. In furtherance of the executed inter-local agreement between SFWMD, Osceola County and the City of Kissimmee the SFWMD has budgeted \$150,000 in fiscal year 2011 that will provide funds towards acquisition of this parcel.

A summary of the land purchases, including those acquired with Shingle Creek Phase II beltway funding are summarized in **Table 1 and in Figure 2**.

2. Restoration and Management

SFWMD continues ecological restoration through prescribed fire and exotic plant control on Beltway acquired lands in the Shingle Creek and Lake Marion Creek projects. Based on the initial available amount of \$6,022,800 received by the SFWMD, with \$4,563,529 allocated to land acquisition and mitigation banking, there was \$1,459,271 provided to restoration. Currently, the financial summary report indicates an available balance in the restoration sub-fund of \$731,198.62 on September 30, 2010. Interest on the land acquisition and restoration sub-funds can be used towards land acquisition, restoration or management expenses; as of

September 30, 2010 this amount is \$1,004,376.60. During FY2010, \$1,613.14 provided miscellaneous office, tool and equipment supplies in support of the project, \$20,149.88 provided law enforcement patrol by the Florida Fish and Wildlife Conservation Commission, \$10,048 provided equipment storage rental, \$79,705.17 towards exotic control for the treatment of 600 acres and \$9,991.88 for vegetation management activities including mowing, trail maintenance, fenceline and fireline preparation, and removal of heavy fuel loads in areas adjacent to residential properties.

Using funds from the Shingle Creek Phase III, SFWMD funds a full-time land management position to oversee the daily management responsibilities of the SFWMD's beltway mitigation lands, primarily focusing on the Shingle Creek Management Area (SCMA), but also Lake Marion Creek Management Area (LMCA). During FY2010, \$49,231.05 supported staff in the Shingle Creek project. The total restoration expenditures were \$170,739.12.

3. Environmental Education

SFWMD continues to maximize opportunities for environmental education on its lands in the Shingle Creek Management Area. SFWMD has formed a special relationship with Orange County Public Schools at the Hunter's Creek Middle School (HCMS). Students from HCMS and other nearby schools can use SCMA for appropriate curricula (biology, ecology, chemistry, history) and over time assist SFWMD with long-term management of SCMA (trail development, research, scientific studies, etc.).

4. Public Partnerships

As demonstrated in its beltway acquisitions, SFWMD participates in public partnerships to maximize beltway funding opportunities to acquire land for public benefit. SFWMD will continue to seek and establish public partnerships to acquire, restore, and manage environmental lands identified in the beltway legislation.

5. Future Projects

SFWMD continues to seek opportunities to acquire and restore land that is consistent with its mission of water resource protection, flood control, and the protection of environmentally sensitive lands. The Shingle Creek, Reedy Creek, and Lake Marion Creek SOR projects are within hydrological basins identified in beltway legislation and remain the best opportunities to address beltway mitigation.

Table 1. Acquisition Summary

| Parcel | Approximate Acreage | Habitat Type(s) | Partnership | Restoration Opportunities | Beltway funding/Date |
|----------------------------|---------------------|---|--------------------------------|--|-----------------------------|
| Babb* | 125 | Mesic flatwoods, pasture, freshwater marsh, floodplain swamp | Osceola Co. | Upland restoration, exotic plant control | \$1,275,000 January 2004 |
| St. Clair* | 40 | Scrubby/mesic flatwoods, floodplain swamp | Osceola Co. | Prescribed fire, exotic plant control | \$783,000 October 2004 |
| Westbrook Hunter's Creek | 131 | Floodplain swamp, disturbed land/powerline right-of-way | NA | Hydrologic restoration, exotic plant control | \$342,000 December 2004 |
| Steffee | 27 | Floodplain swamp, hardwood /conifer mix, river/stream | Osceola Co. | Exotic plant control | \$131,900 October 2004 |
| Ruba | 16 | Hardwood and conifer mix forest, disturbed land, oak hammock | Osceola Co., City of Kissimmee | Upland restoration, exotic plant control | \$500,000 March 2007 |
| Scheibner and Meany/Auston | 2.5 | Mesic pine flatwoods, disturbed land | NA | Exotic plant control, prescribed fire | \$21,400 May-July 2004 |
| Black* | 533.75 | Floodplain swamp, mesic pine flatwoods, disturbed land/powerline right-of-way | NA | Exotic plant control, prescribed fire, supplemental tree plantings | \$1,344,400 Dec '91 |
| Total | 875.25 | | | | \$4,397,700 |

* Expended with Beltway Phase II funds

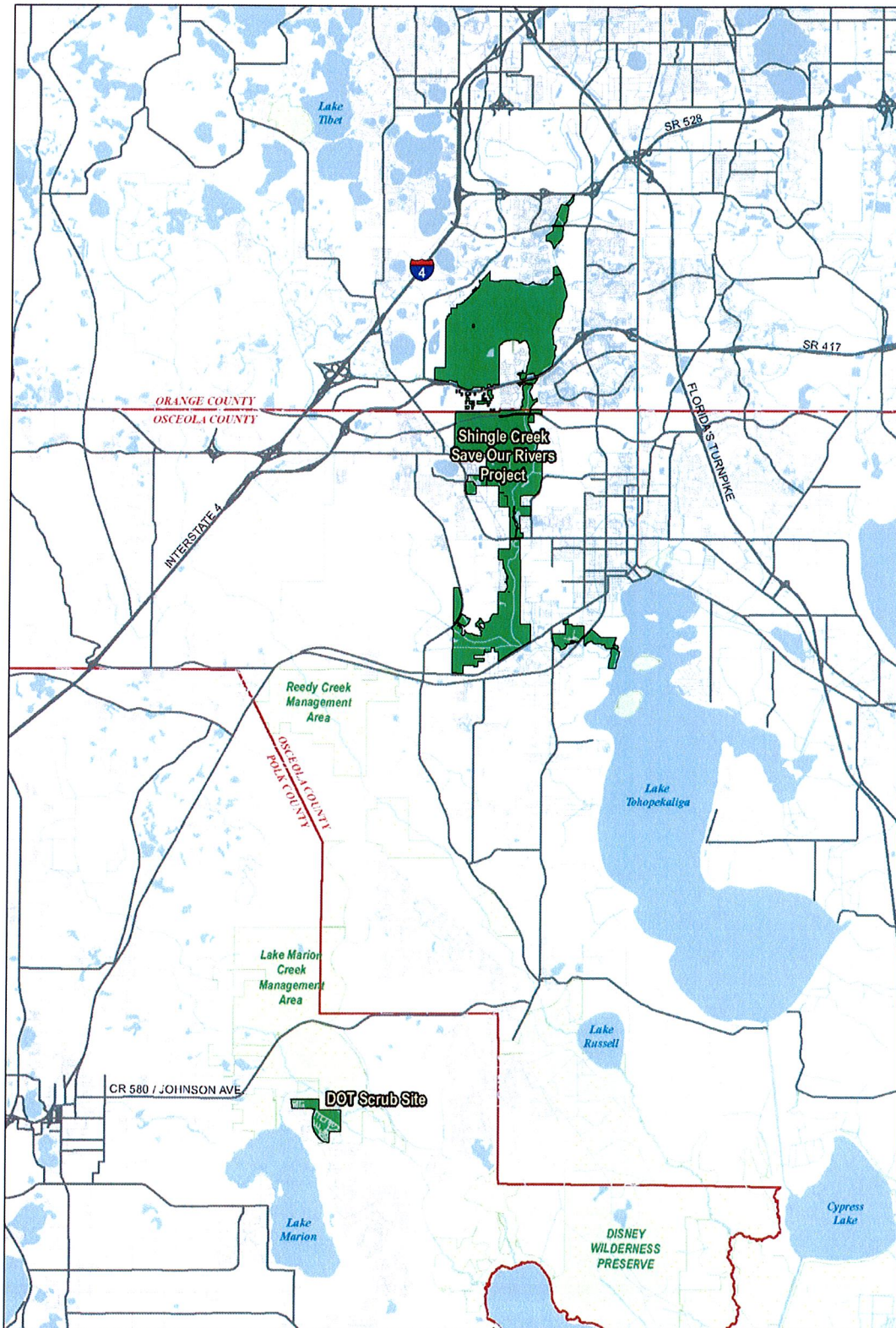
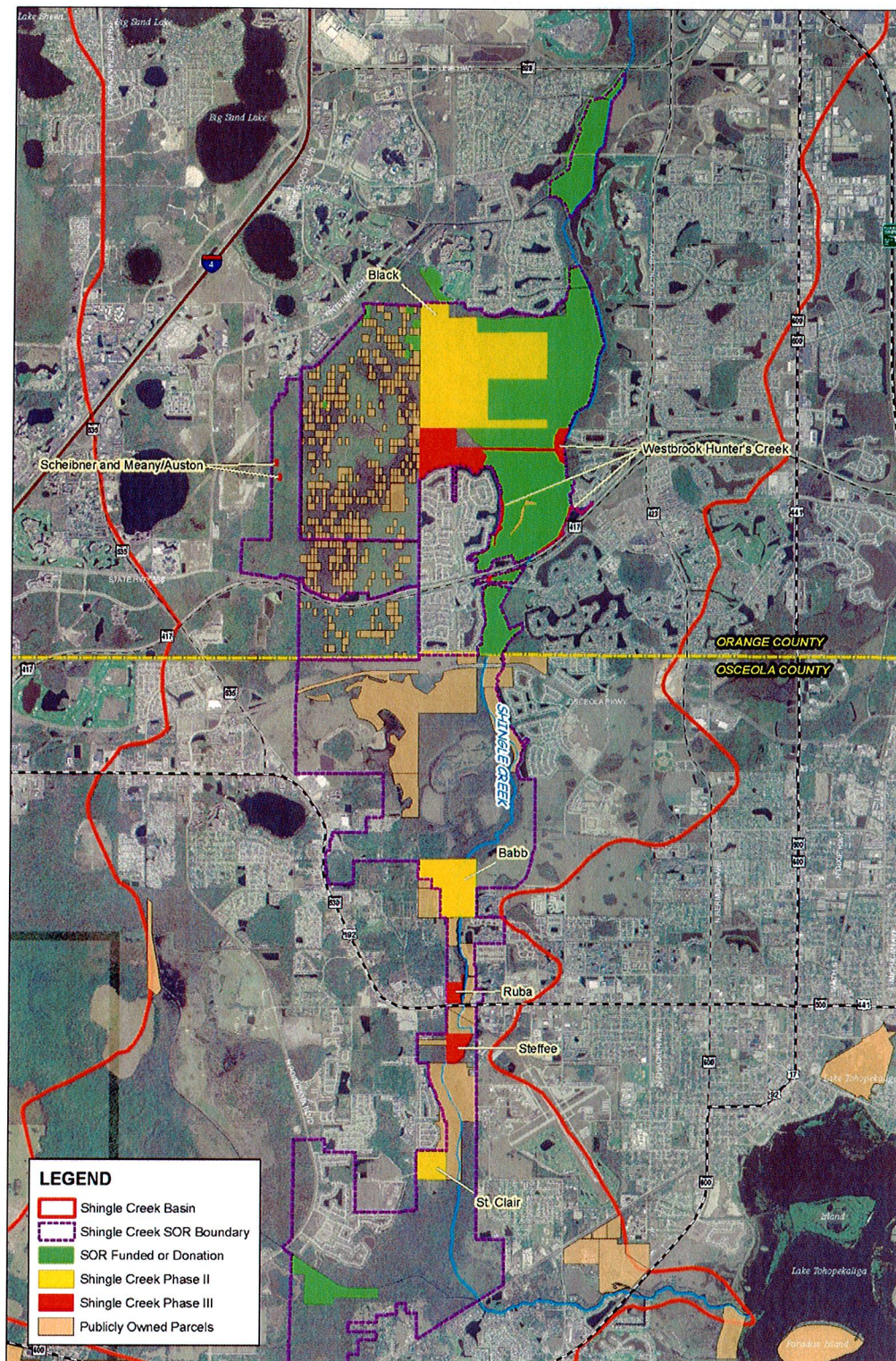


Figure 1
Location Map



South Florida Water
Management District -
Land Stewardship
Division

0 0.5 1 2 Miles



Figure 2
Shingle Creek Save Our Rivers Project