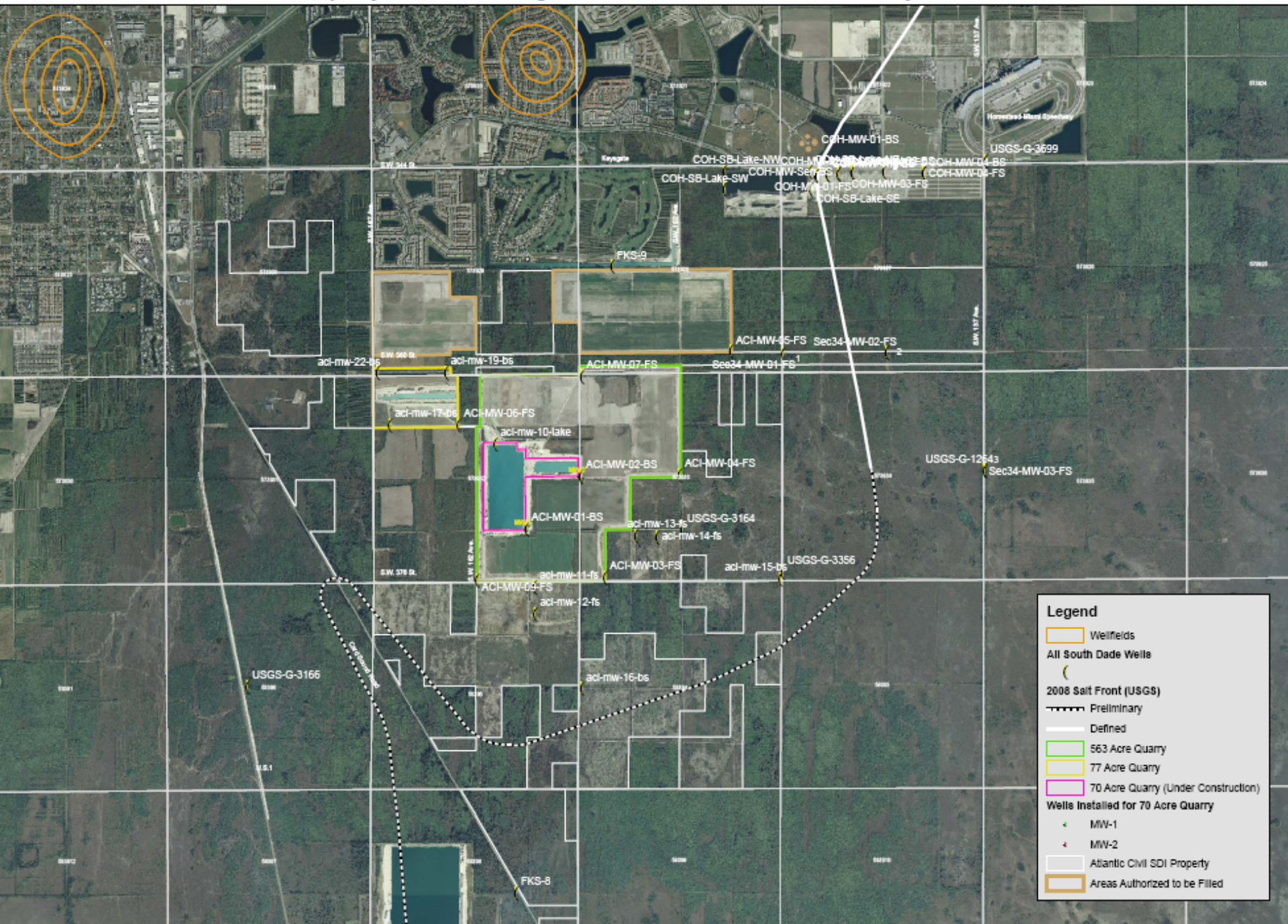


Atlantic Civil Mine; SFWMD Permit (13-01409-S)

South Miami-Dade Water Issues Roundtable
October 4, 2010

ACI Property and Monitoring Wells in South Miami-Dade County

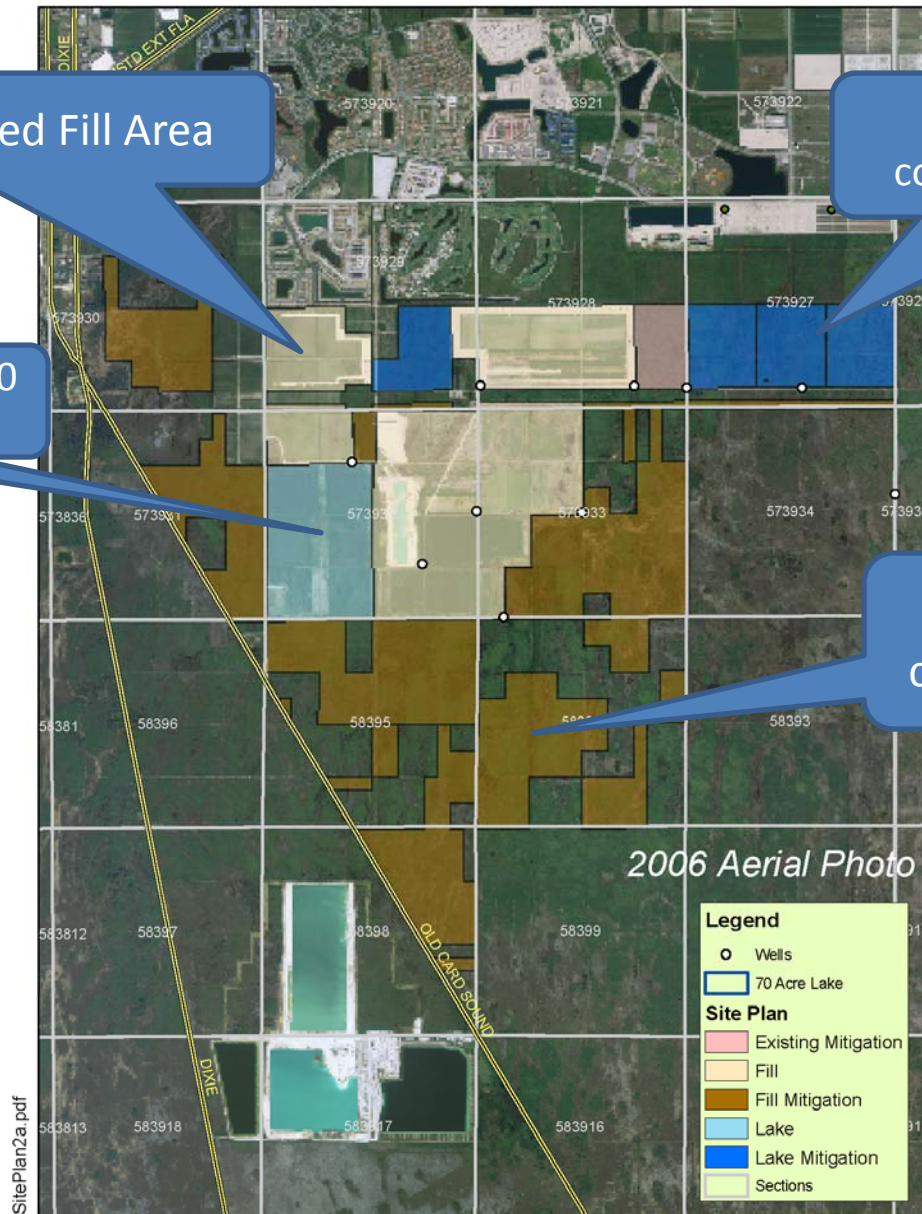


Previously permitted Fill Area

Lake Mitigation and conservation easement

Previously permitted 250 AC Lake

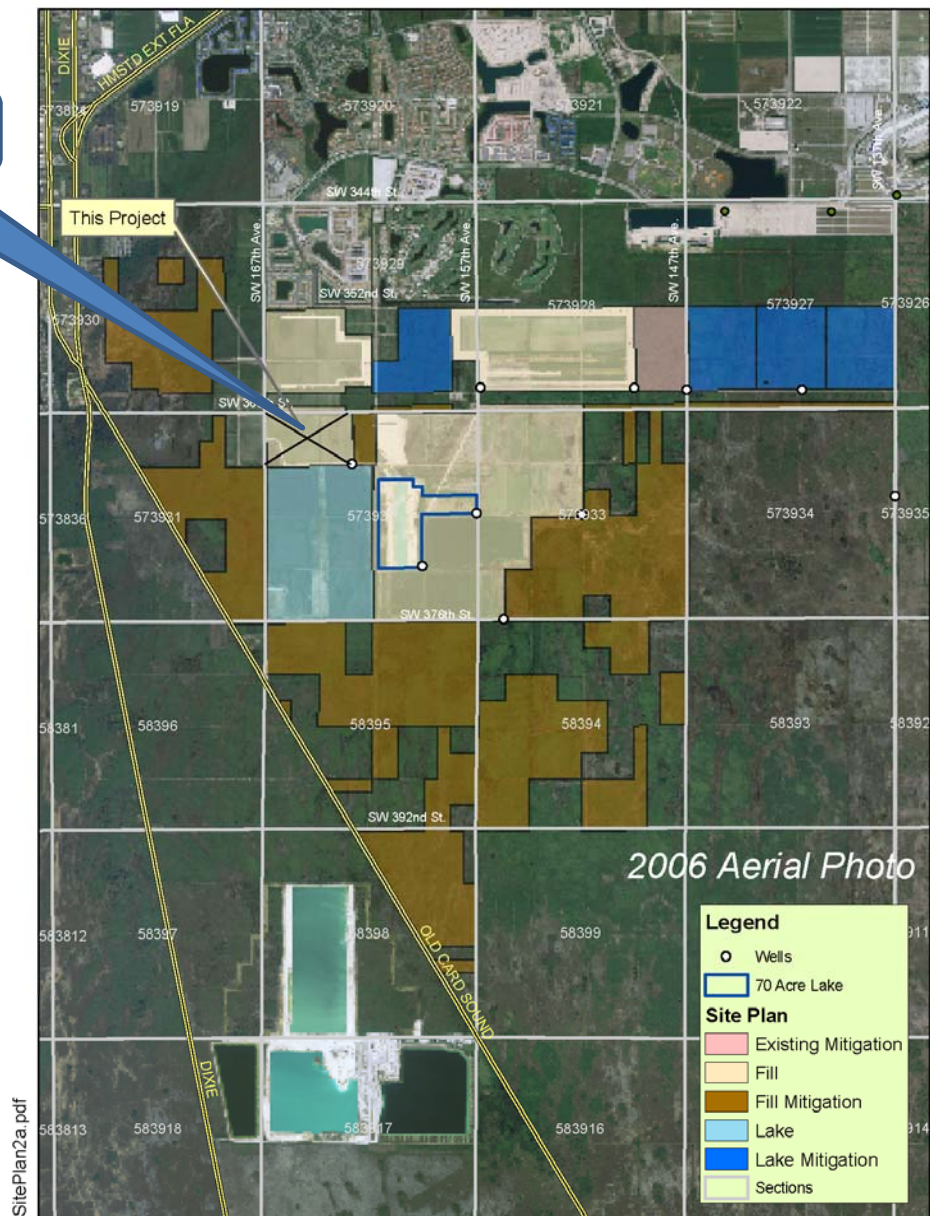
Fill Mitigation and conservation easement



0 0.5 1 Miles

This Project

This Project

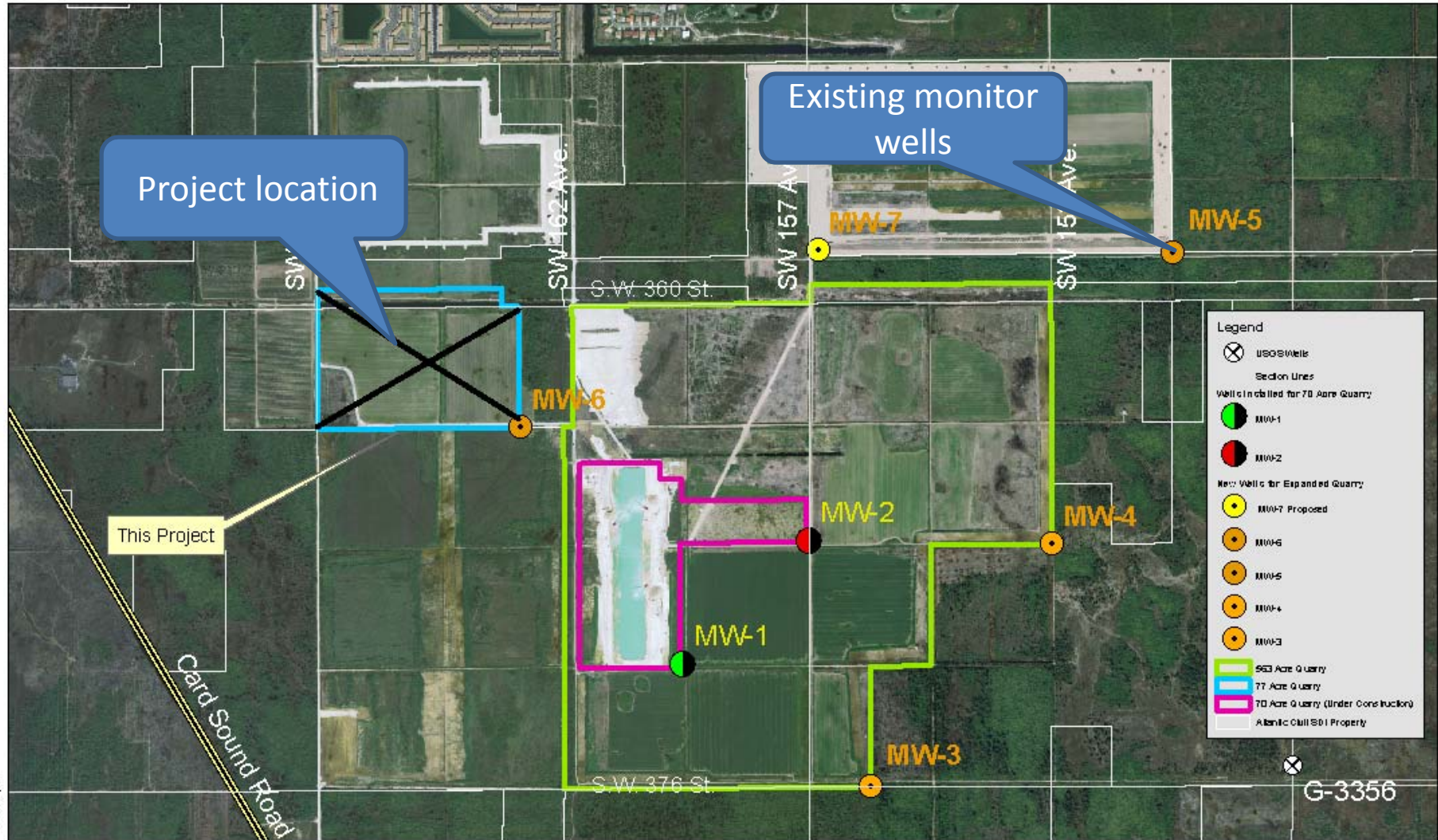


0 0.5 1 Miles

Atlantic Civil

- **77.3 acre rock pit permitted on Dec. 13, 2007 (Application No. 070606-18/Permit No. 13-01409-S)**
- **Permit authorized excavation to a depth of (-)56' NGVD**
- **Extensive groundwater monitoring plan was required to ensure proposed excavation would not promote saltwater intrusion**
- **Monitoring data submitted to District on a bi-weekly basis**

Atlantic Civil, Inc.



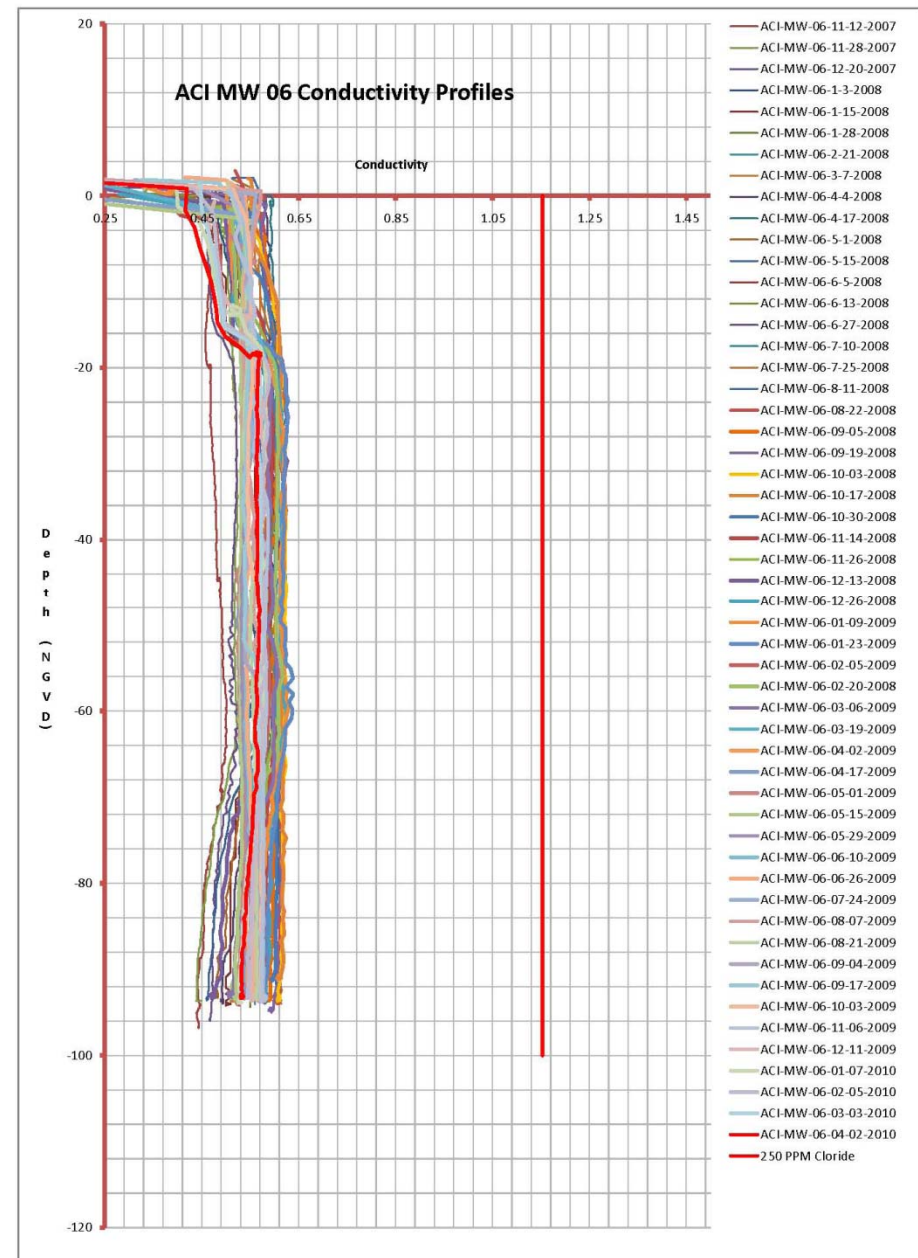
Wells21.pdf

0 0.125 0.25 0.5 Miles



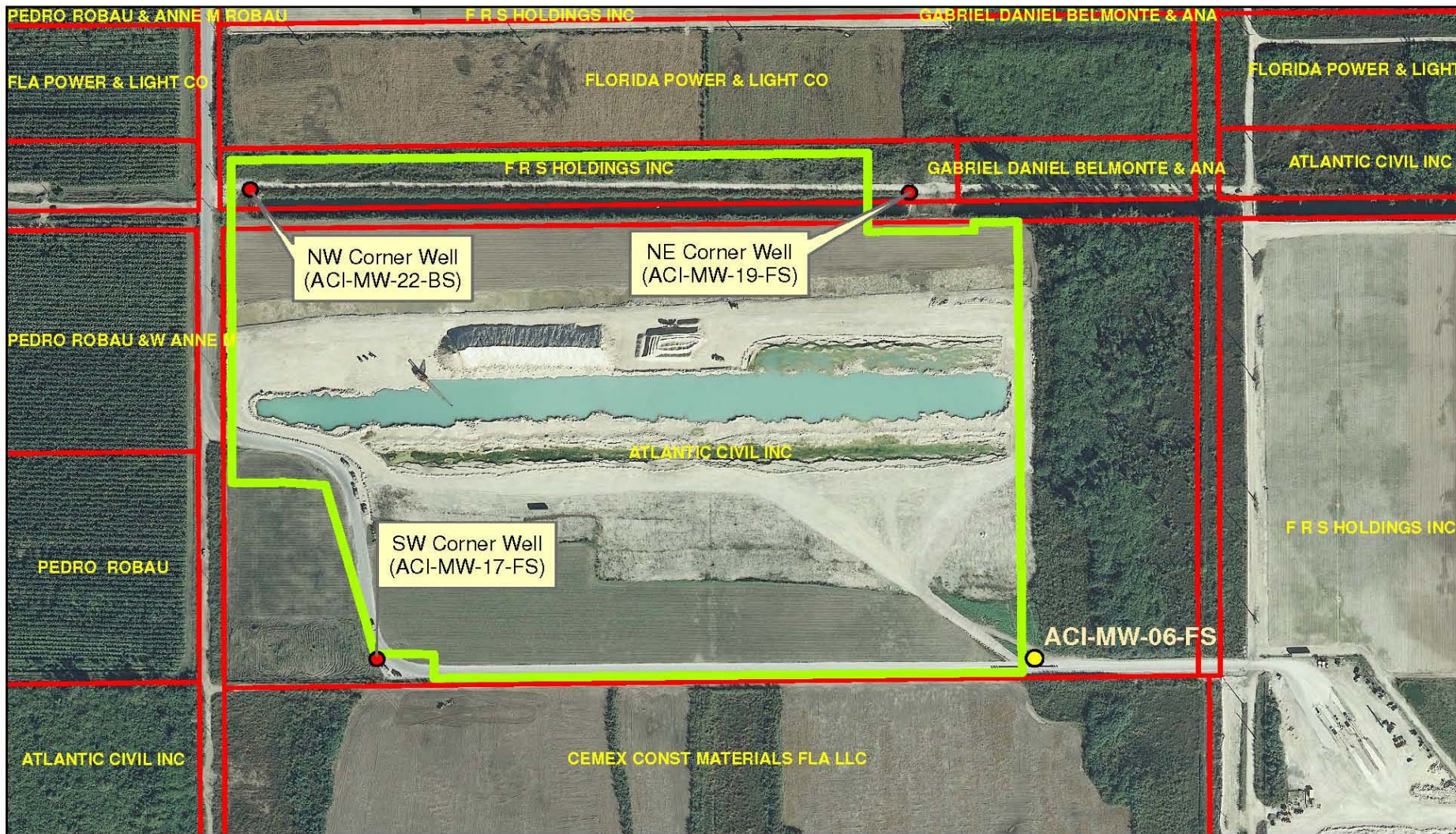
EAS Engineering, Inc.

- **Monitor Well MW-06**
 - Bi-weekly profiles
 - 11/07 to 4/10 (shown)
 - Freshwater profile
 - No increasing trend



Atlantic Civil Modification

- Application submitted on July 11, 2008 requesting a modification of the previously issued permit to increase depth of excavation from (-)56' NGVD to (-)67.2' NGVD
- Atlantic Civil agreed to install fully screened (20-100 ft depth) wells at SW and NE corners of quarry
- Well with a discreet screen between 85' and 90' was installed after issuance of 2007 permit in NW corner of quarry; existing fully screened well already existed in SE corner



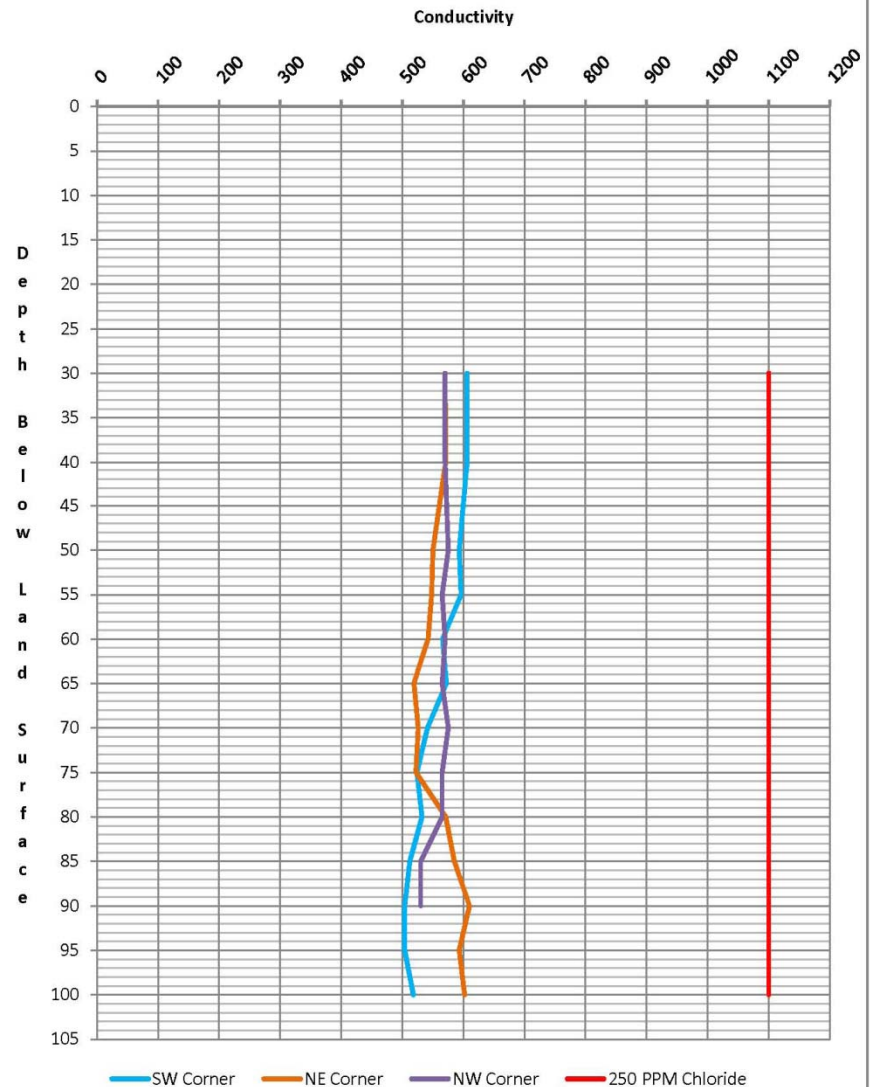
Feet

ACI 77 ac. Lake
Monitoring Wells
May 2010

EAS Engineering, Inc.
55 Almeria Ave.
Coral Gables, FL 331

- Initial conductivity profiles from test wells constructed at NE, NW, and SW corner of the project
- Entire Biscayne Aquifer profile
- Freshwater throughout

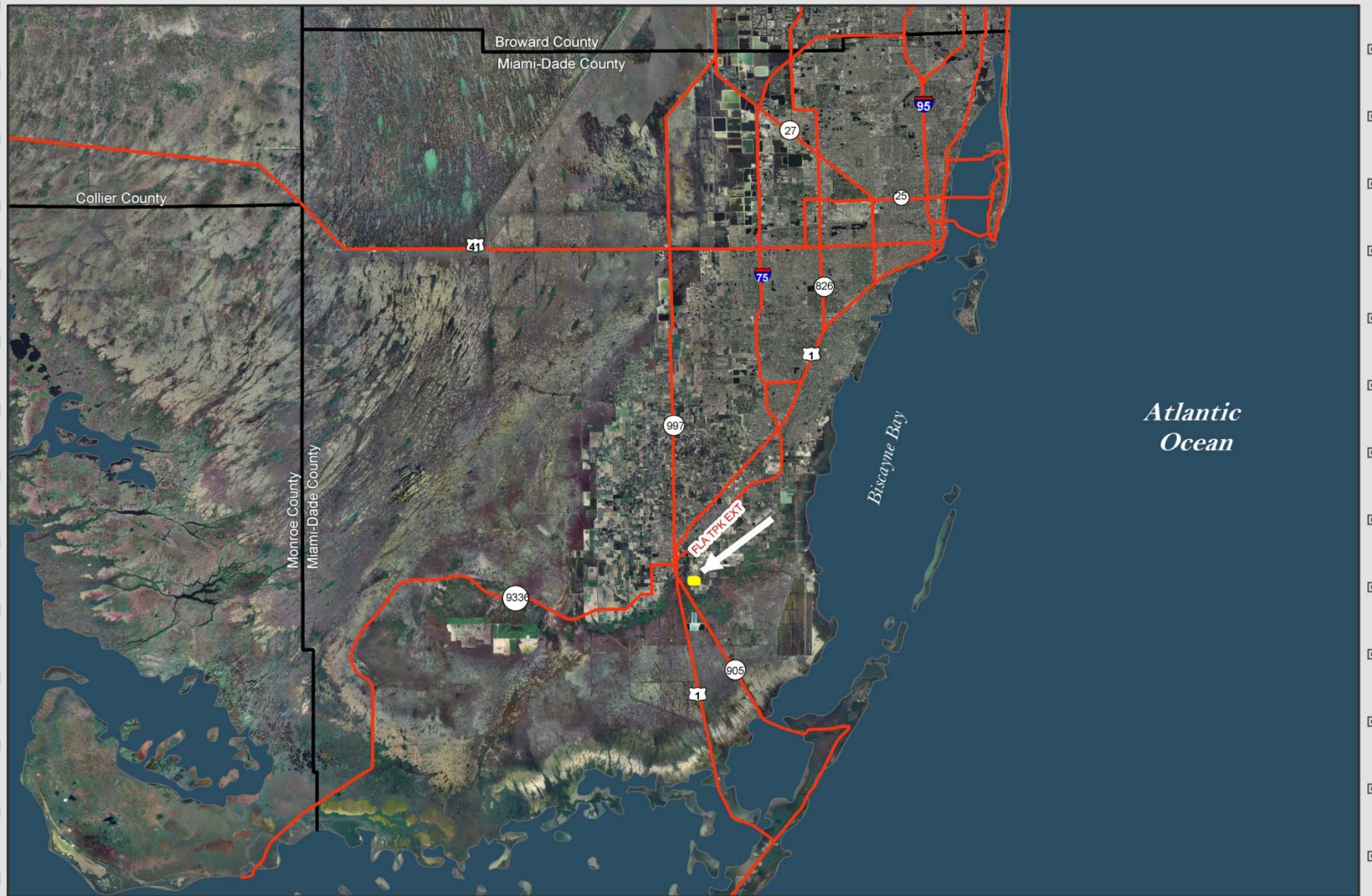
ACI 77ac. Lake
Conductivity vs. Depth



Atlantic Civil Modification, Cont.

- **Special Condition Number 14 requires permittee to collect conductivity profiles monthly in each of the monitoring wells associated with permit**
- **If conductivity in any of the four (4) wells surrounding the mine increase above 900 microsiemens per centimeter, monitoring frequency shall increase to every two (2) weeks**

Questions?



APPLICATION: 070606-18



ROADS

Atlantic Civil/SDI Property



Map made by: Lynn J. Cox
Environmental Resource Regulation
Map Date: December 4, 2007
Imagery: 2004-2005 DOQQ, Natural Color, 1mtr



This map is a conceptual tool utilized for project development and implementation only. This map is not self-executing or binding, and does not otherwise affect the interests of any person including any vested rights or existing uses of real property. Any information, including but not limited to maps and data, received from the SFWMD is provided "as is" without any warranty and the SFWMD expressly disclaims all express and implied warranties of merchantability and fitness for a particular purpose. The District does not make any representations regarding the use or the results of the use, of the information provided to you by the District.

N



0 1 2 4 6 8

Miles





APPLICATION: 070606-18



ROADS



Atlantic Civil/SDI Property

Map made by: Lynn J. Cox
Environmental Resource Regulation
Map Date: December 4, 2007
Imagery: 2004-2005 DOQQ, Natural Color, 1mtr



This map is a conceptual tool utilized for project development and implementation only. This map is not self executing or binding, and does not otherwise affect the interests of any person including any vested rights or existing uses of real property. Any information, including but not limited to maps and data, received from the SFWMD is provided "as is" without any warranty and the SFWMD expressly disclaims all express and implied warranties of merchantability and fitness for a particular purpose. The District does not make any representations regarding the use or the results of the use, of the information provided to you by the District.

