

South Miami-Dade Water Conditions and Operations Summary

November 18, 2010

Water Conditions Summary

■ Rainfall

- Little rainfall in the basin since Nov. 4th
- Basin-wide rainfall for month 116% of normal

■ Operations

- S-21A, S-20F and S-179 all operating at low range
- S-194 and S-196 remain closed as do divide structures S-165 and S-167
- Each day tailwater exceeds headwater during high tide resulting in coastal gate closures for part of the day

sfwmd.gov



Water Conditions Summary

■ Operations

- Western system canal and structures operating in wet mode
- Field conditions drying out recently but planting has been impacted by wet conditions.
- S-21A, S-20F and S-179 to remain at low range over next two weeks

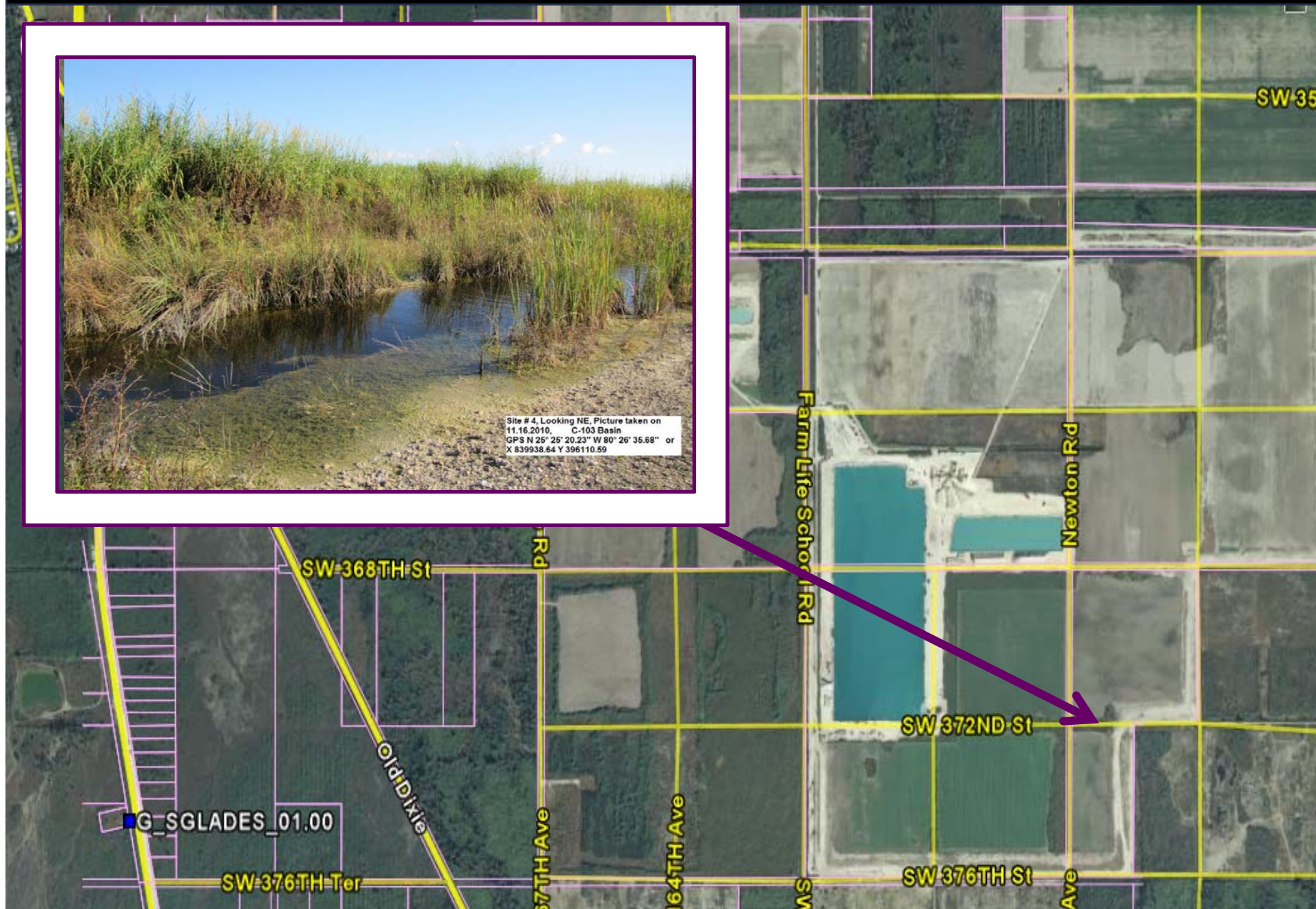
■ Next water conditions teleconference call

- December 2nd from 2:00 to 3:00 pm.
- Call in toll free: (866) 433-6299; meeting ID 6083

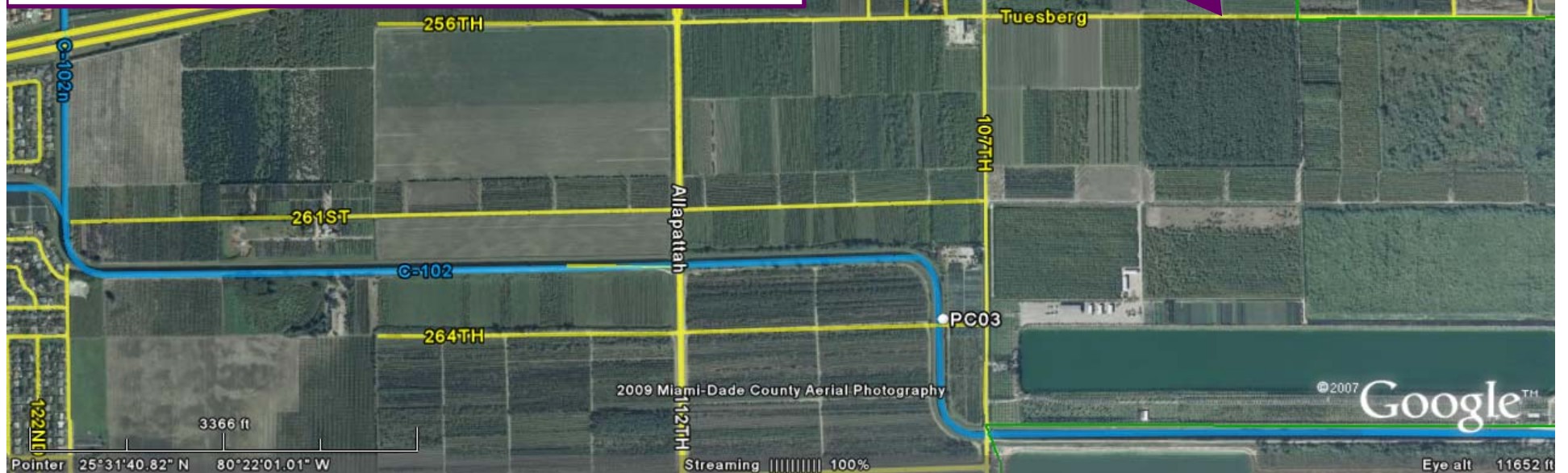
sfwmd.gov



SOUTH FLORIDA WATER MANAGEMENT DISTRICT



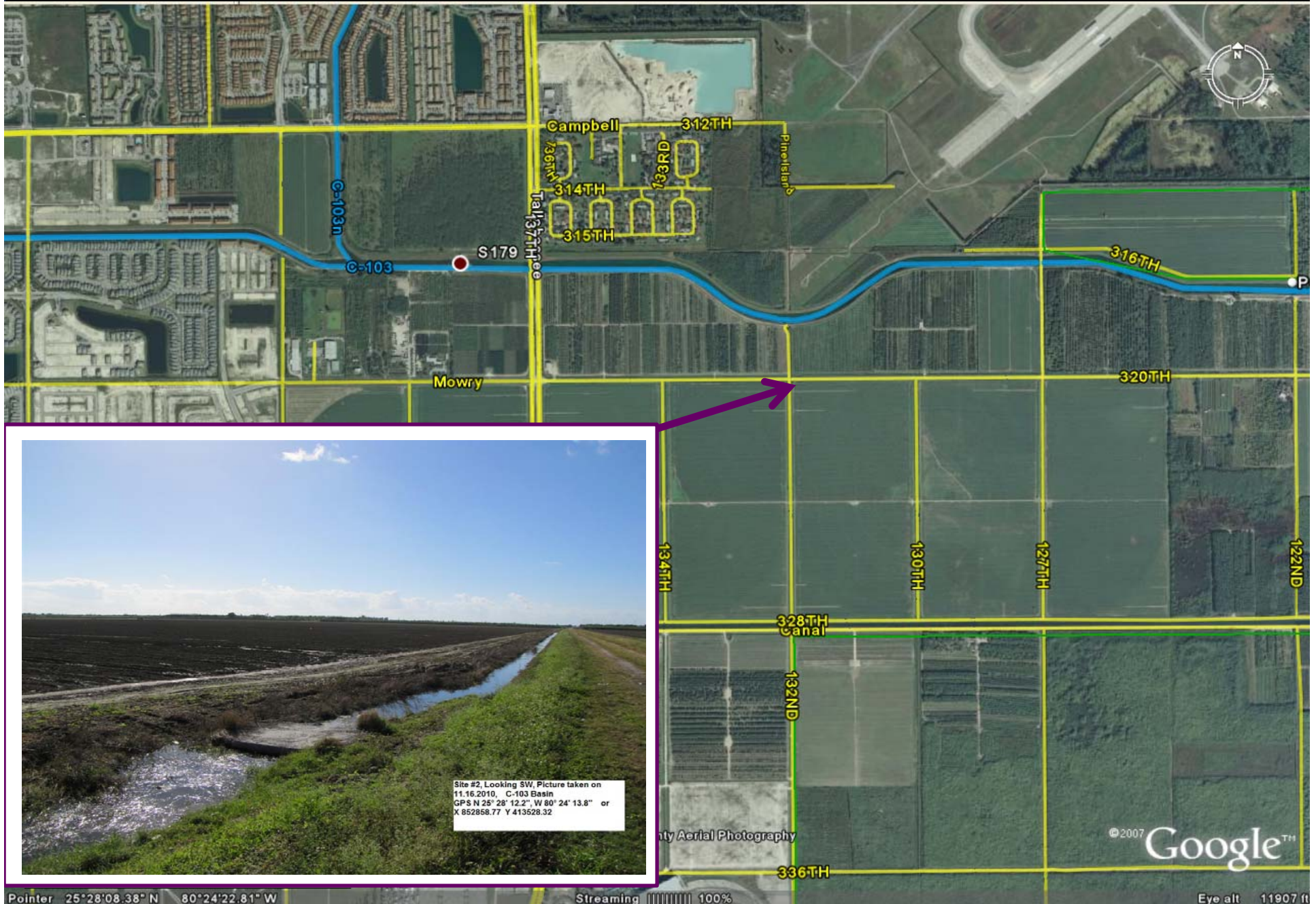
SOUTH FLORIDA WATER MANAGEMENT DISTRICT



SOUTH FLORIDA WATER MANAGEMENT DISTRICT



SOUTH FLORIDA WATER MANAGEMENT DISTRICT



SOUTH FLORIDA WATER MANAGEMENT DISTRICT

Palm Tree Nursery converted to row crop field – C-102 Basin



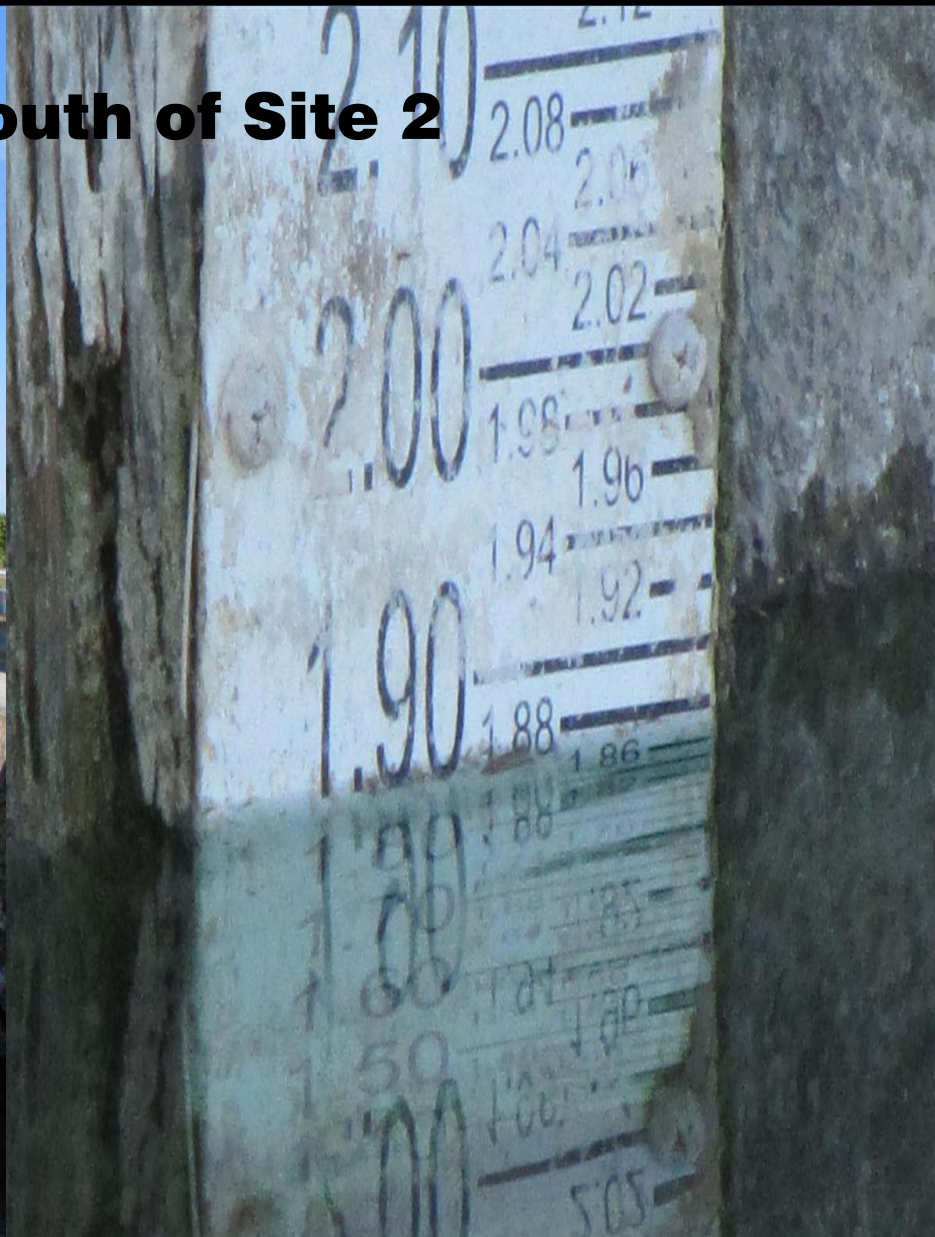
10/27/2010 13:53



10/27/2010 13:53



Staff Gauge South of Site 2



C-102 Basin



C-103 Basin



11/17/10 Seasonal Agricultural Drawdown Recommendation

Based on the November 16th field inspection, rainfall and high tides we have experienced over the last three weeks, no change to the current settings:

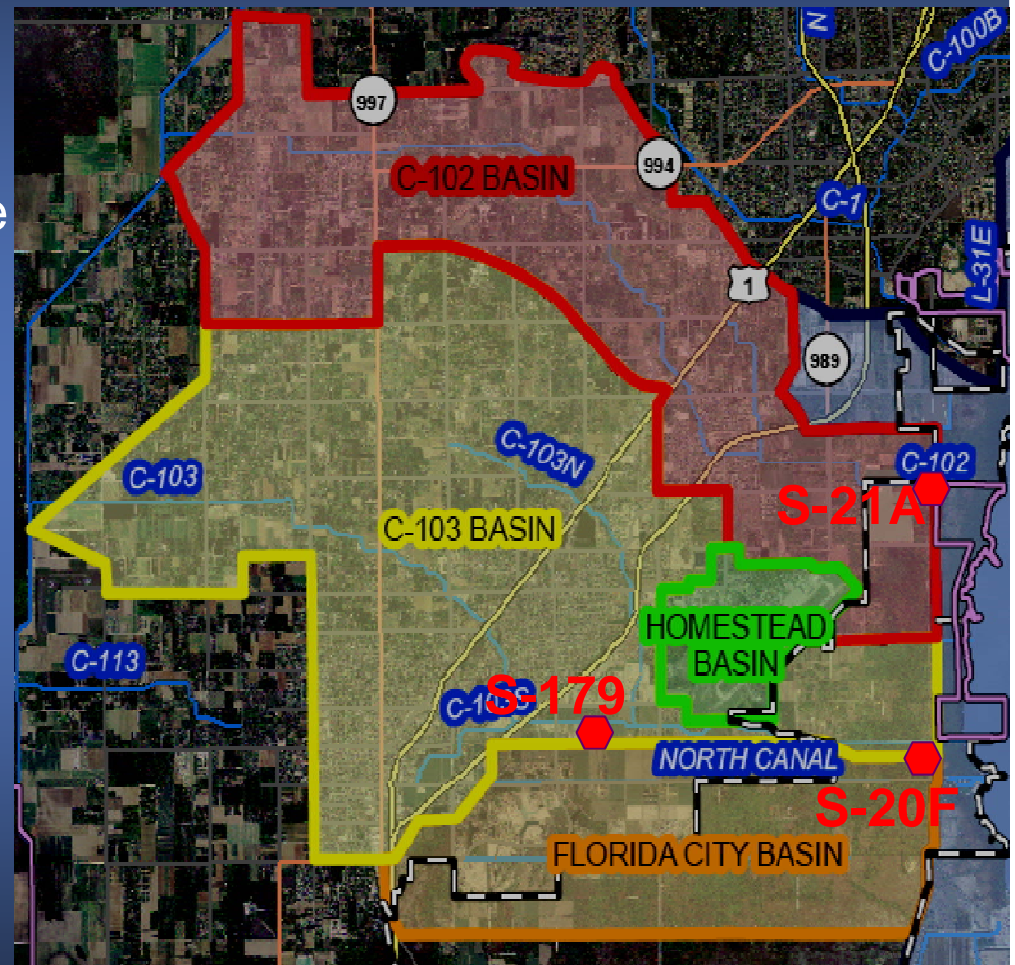
C-102 Basin:

S-21A setting to **Low range**; open at 1.4 ft., close at 1.0 ft.

C-103 Basin:

S-20F setting to **Low Range**; open at 1.4 ft., close at 1.0 ft.

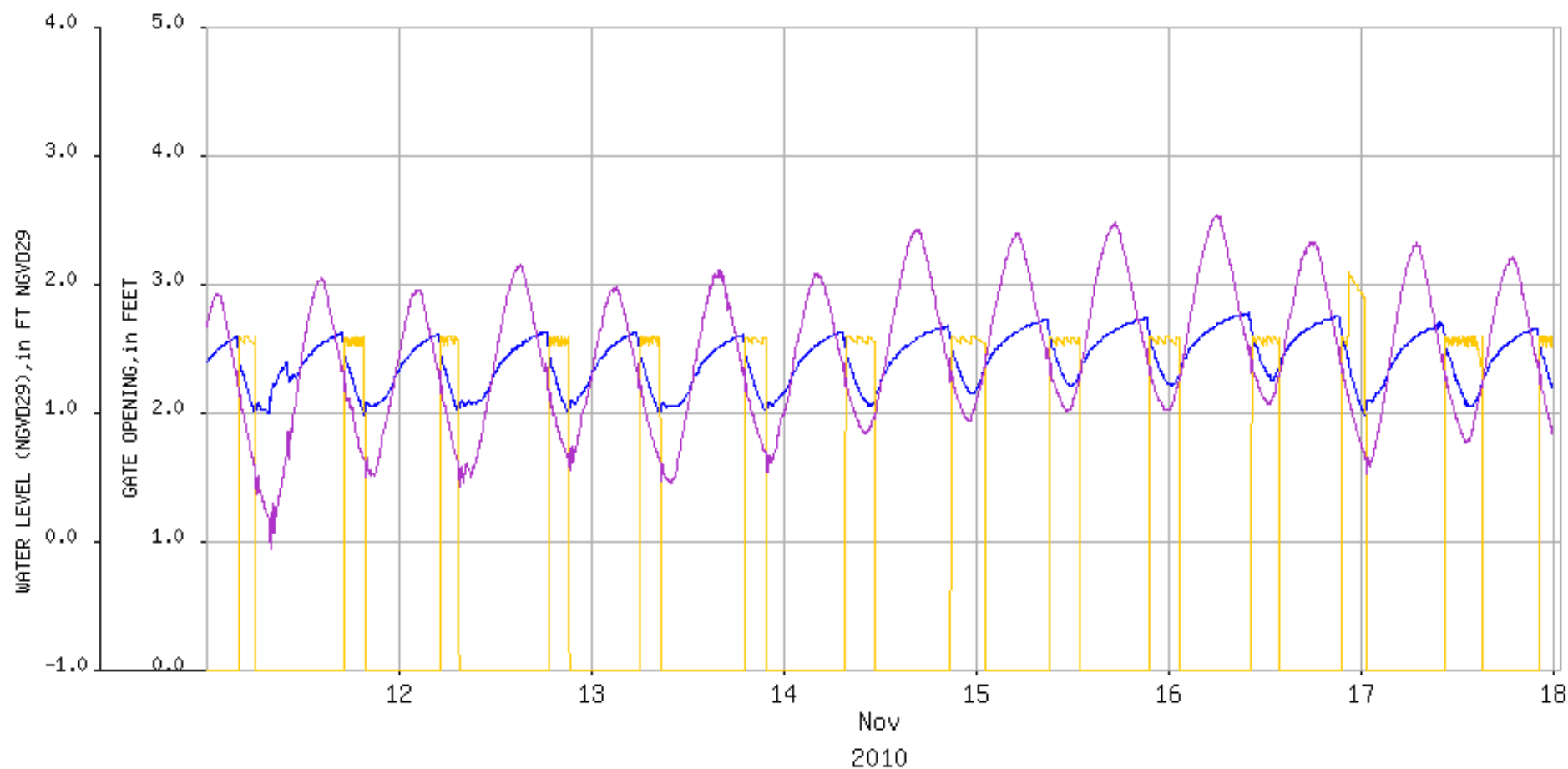
S-179 setting to **Low range**; open at 3.1 and close at 2.7



Questions

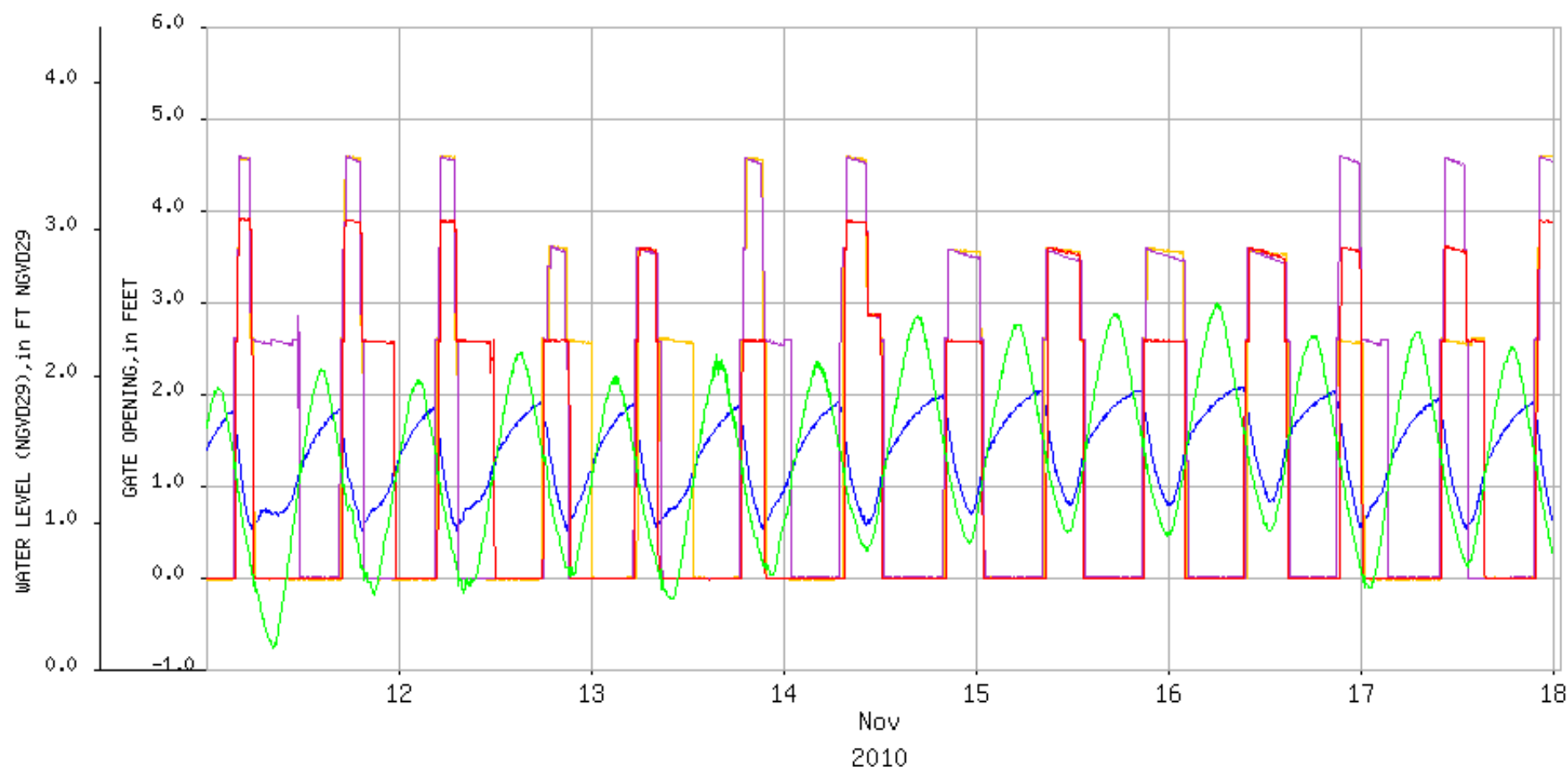


SOUTH FLORIDA WATER MANAGEMENT DISTRICT



	Station	Freq	DataType	Statistic	Agency	Recorder	OpNum	DBKEY	Provisional Data After
—	S21A_H	BK	STG	INST	WMD	TELE		06603	17-NOV-2010 23:59
—	S21A_S	BK	GATE	INST	WMD	TELE	1	LT194	17-NOV-2010 23:59
—	S21A_T	BK	STG	INST	WMD	TELE		06604	17-NOV-2010 23:59

SOUTH FLORIDA WATER MANAGEMENT DISTRICT



	Station	Freq	DataType	Statistic	Agency	Recorder	OpNum	DBKEY	Provisional Data After
—	S20F_H	BK	STG	INST	WMD	TELE		06572	08-NOV-2010 23:57
—	S20F_S	BK	GATE	INST	WMD	TELE	1	LS476	08-NOV-2010 23:57
—	S20F_S	BK	GATE	INST	WMD	TELE	2	LS845	08-NOV-2010 23:57
—	S20F_S	BK	GATE	INST	WMD	TELE	3	LS846	08-NOV-2010 23:57
—	S20F_T	BK	STG	INST	WMD	TELE		06583	08-NOV-2010 23:57