

# SETTLEMENT AGREEMENT REPORT

July – September 2014  
WY2014 Annual  
Shark River Slough  
Compliance

Stuart Van Horn, P.E.

*Section Leader*

Compliance Assessment & Reporting Section  
Water Quality Bureau

Technical Oversight Committee

April 28, 2014



# SUMMARY

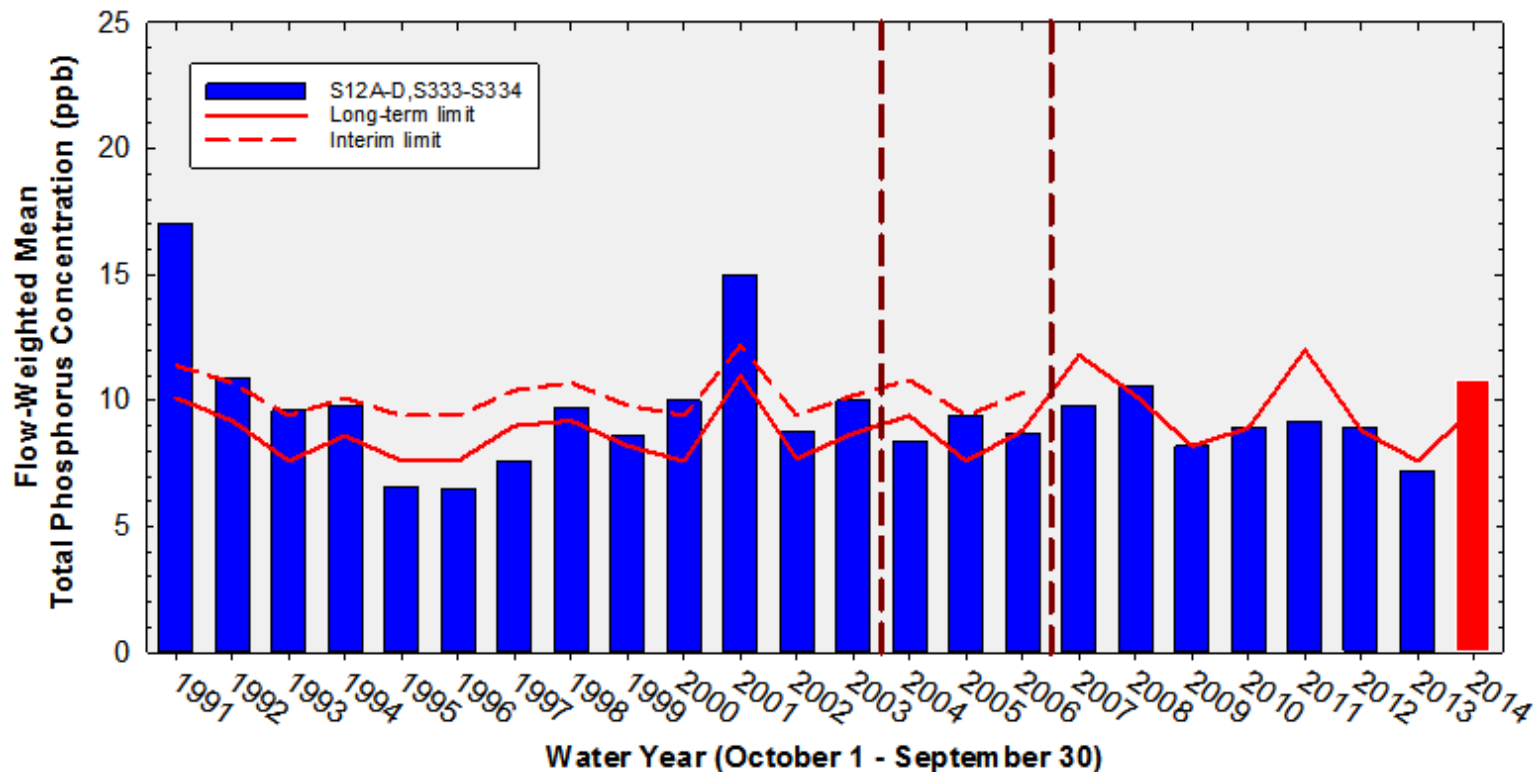
Month	Geometric Mean TP Concentration (ppb)	Long-term Level (ppb)	Mean Stage (feet NGVD 29)	Number of Samples	
<b>Arthur R. Marshall Loxahatchee National Wildlife Refuge</b>					
Jul 2014	7.7	11.3	16.18	12	
Aug 2014	7.4	9.8	16.47	14	
Sep 2014	7.2	10.1	16.40	14	
12-Month Period Ending	Total Flow (kac-ft)	12-Month Flow-weighted Mean TP Concentration (ppb)	Long-term Limit (ppb)	Percent of Sampling Events Greater than 10 ppb	
				Guideline	Observed
<b>Everglades National Park – Shark River Slough</b>					
Jul 2014	825.5	9.1	8.8	45.7	31.8
Aug 2014	698.6	10.2	9.4	49.2	40.9
Sep 2014	649.0	10.8	9.7	50.6	40.9
<b>Everglades National Park – Taylor Slough and Coastal Basins</b>					
Jul 2014	203.2	4.5	11.0	53.1	1.3
Aug 2014	203.8	4.5	11.0	53.1	1.3
Sep 2014	196.5	4.3	11.0	53.1	1.3

## Shark River Slough

### TP Concentration Compliance Interim Tracking for July 2014 – September 2014

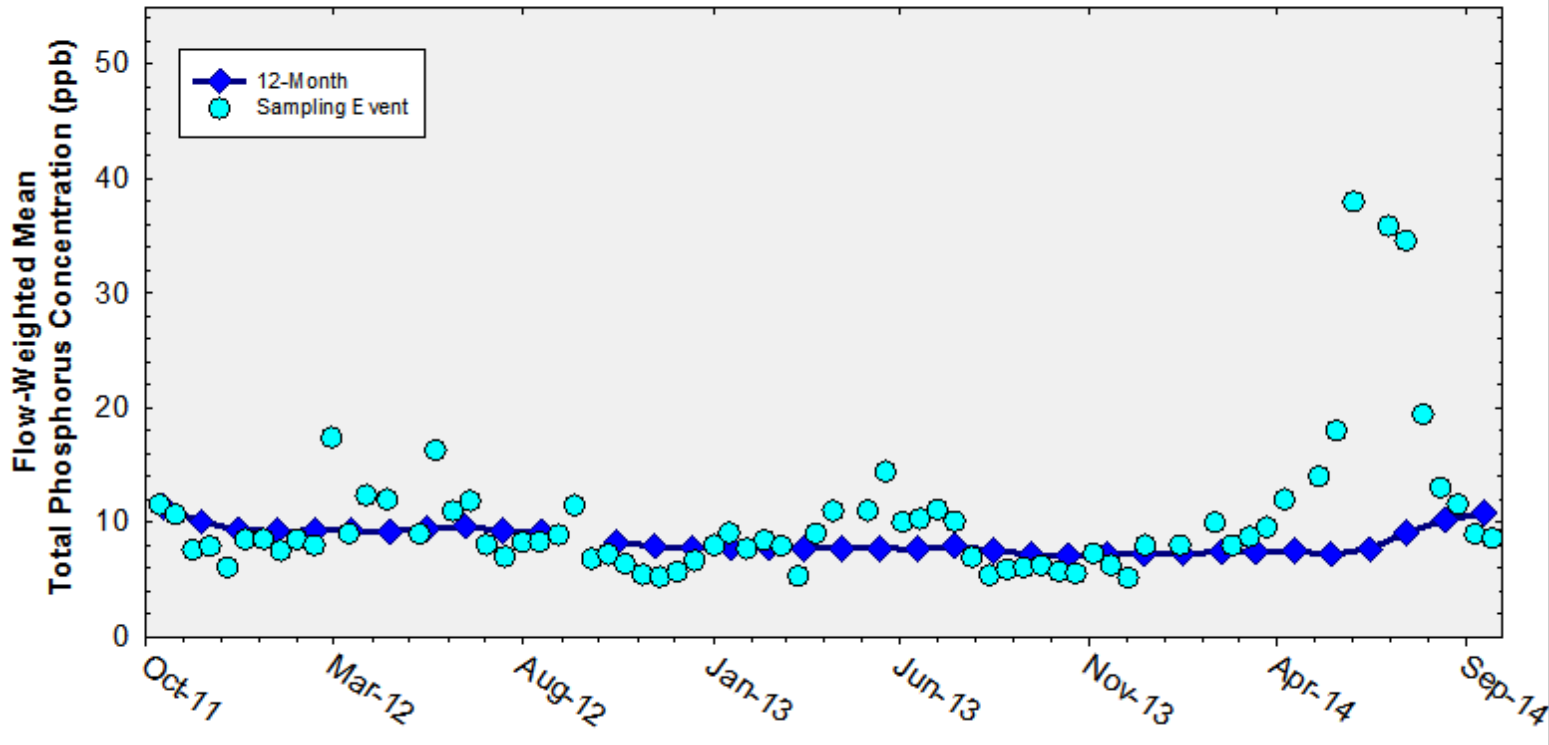
12-Month Period	Total Flow (kac-ft)	Flow-Weighted Mean TP Concentration (ppb)	Long-Term Limit (ppb) <i>Effective 12/31/2006</i>	Percent of Sampling Events Greater than 10 ppb	
				Guideline	Observed
Aug 2013 - Jul 2014	825.5	9.1	8.8	45.7	31.8
Sep 2013 - Aug 2014	698.6	10.2	9.4	49.2	40.9
Oct 2013 - Sep 2014	649.0	10.8	9.7	50.6	40.9

# Annual Flow-weighted Mean Concentrations Inflows to ENP through Shark River Slough



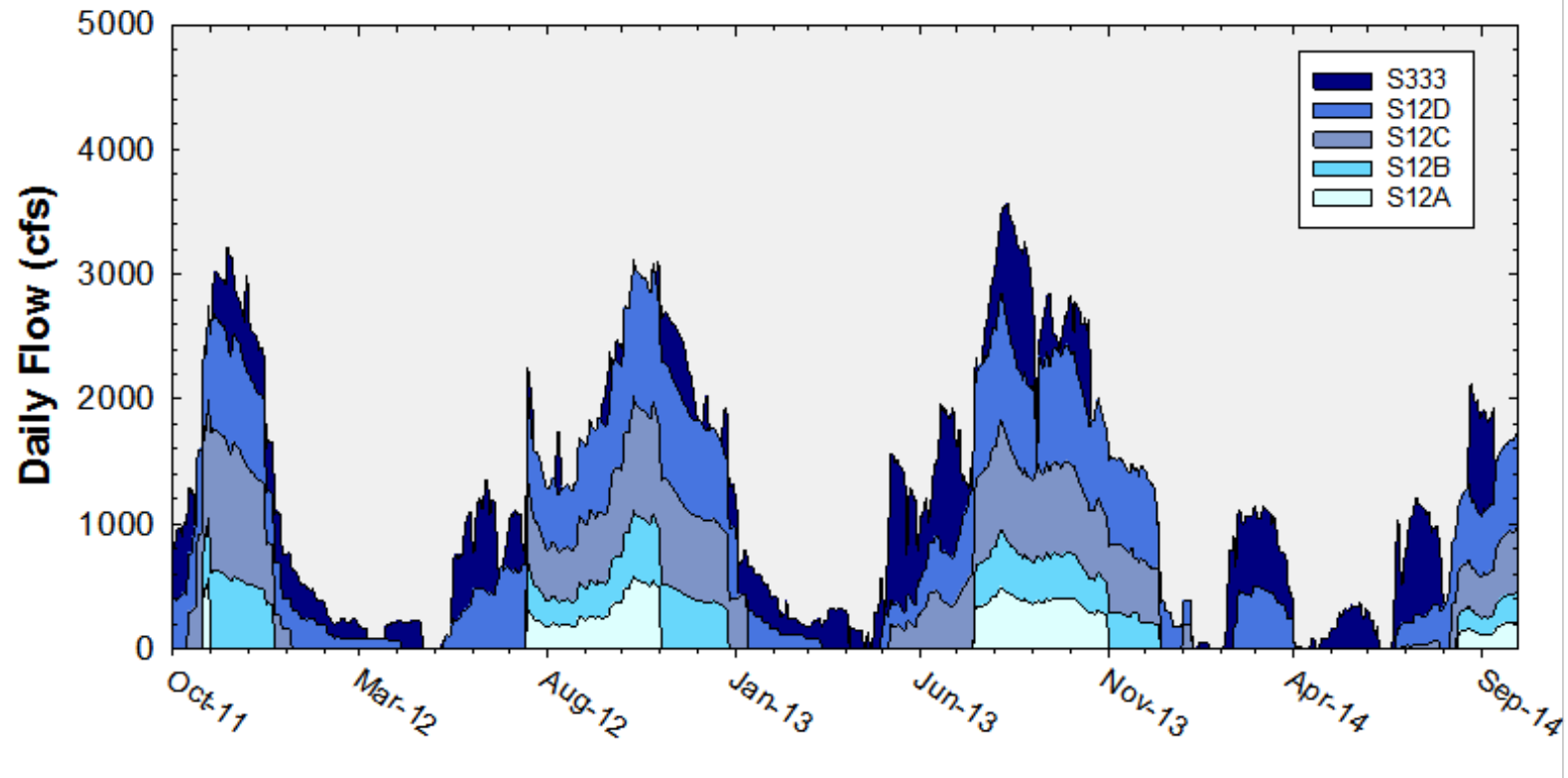
12-month FWMC at the end of each water year compared to the TP interim and long-term limits

## Flow-Weighted Mean Concentrations Inflows to ENP through Shark River Slough

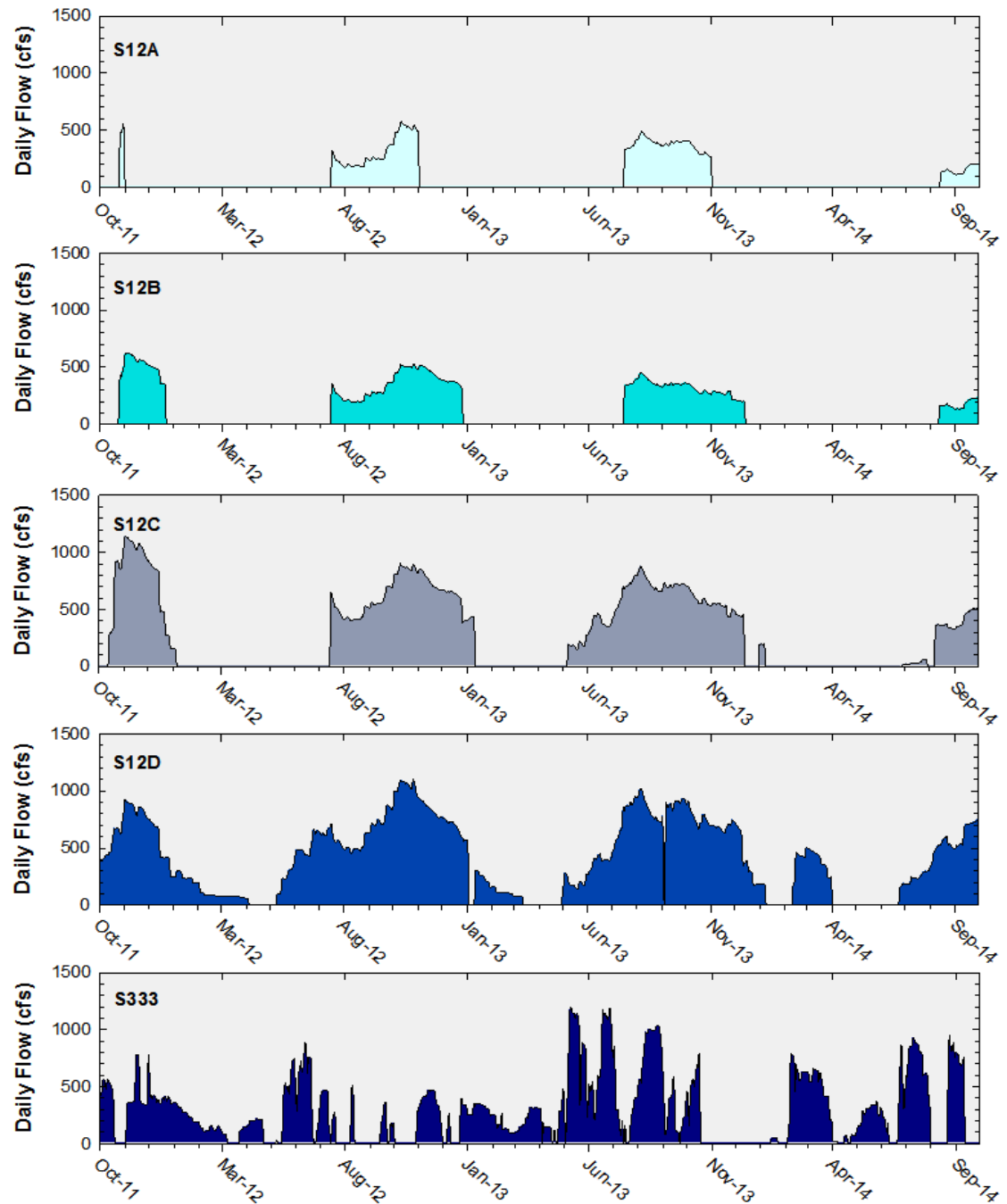


**12-month FWMC at the end of each month and the composite TP concentration for each sampling event**

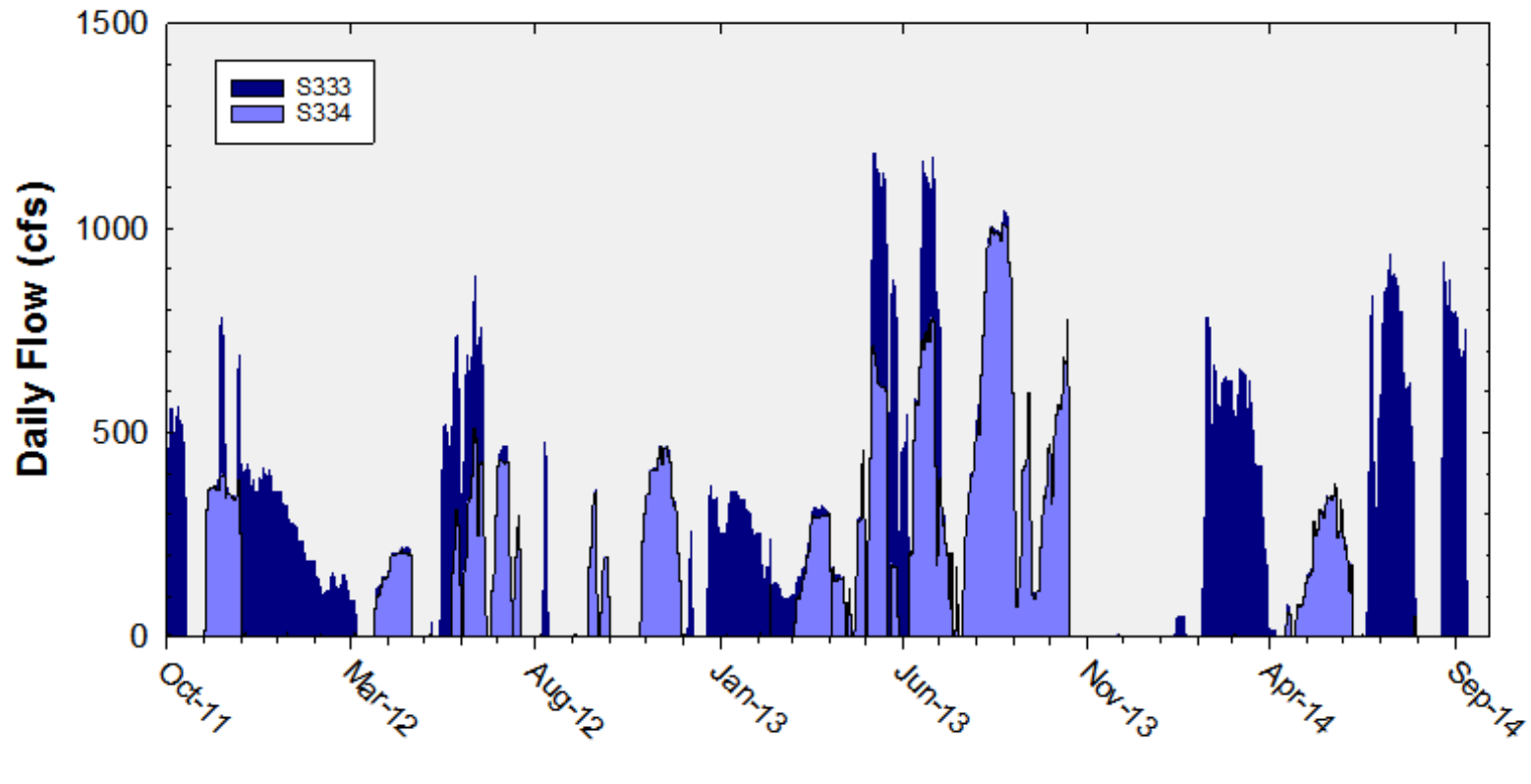
## Shark River Slough Daily Flows



# Daily Flows at individual inflow structures to Shark River Slough



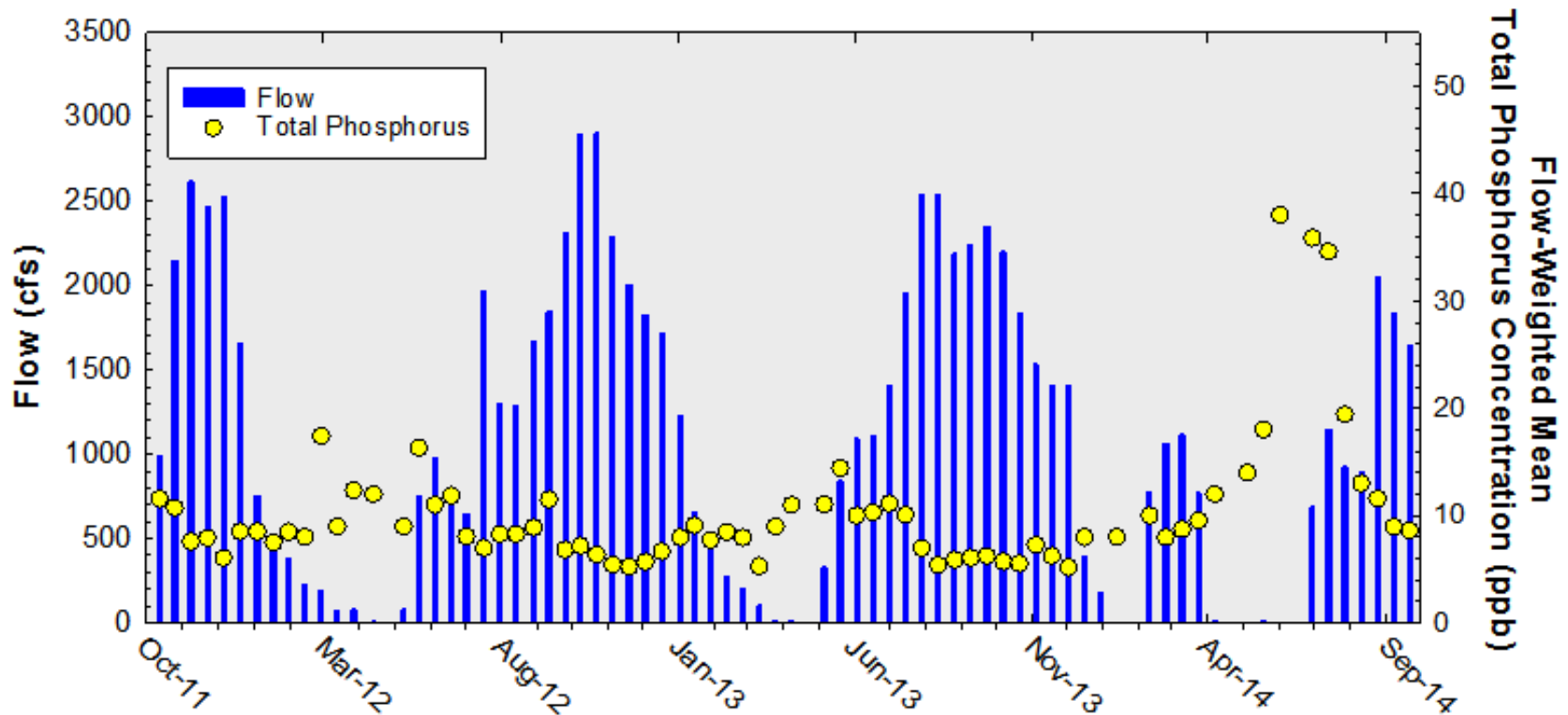
## Daily Flows at S333 and S334





# Shark River Slough

## Sampling Event Flow and FWMC



Flow at Shark River Slough structures and the corresponding TP FWMCs for individual sampling events

Thank You

