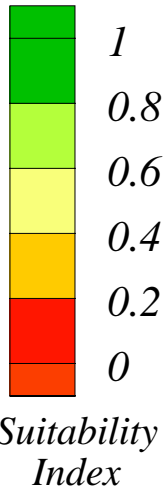
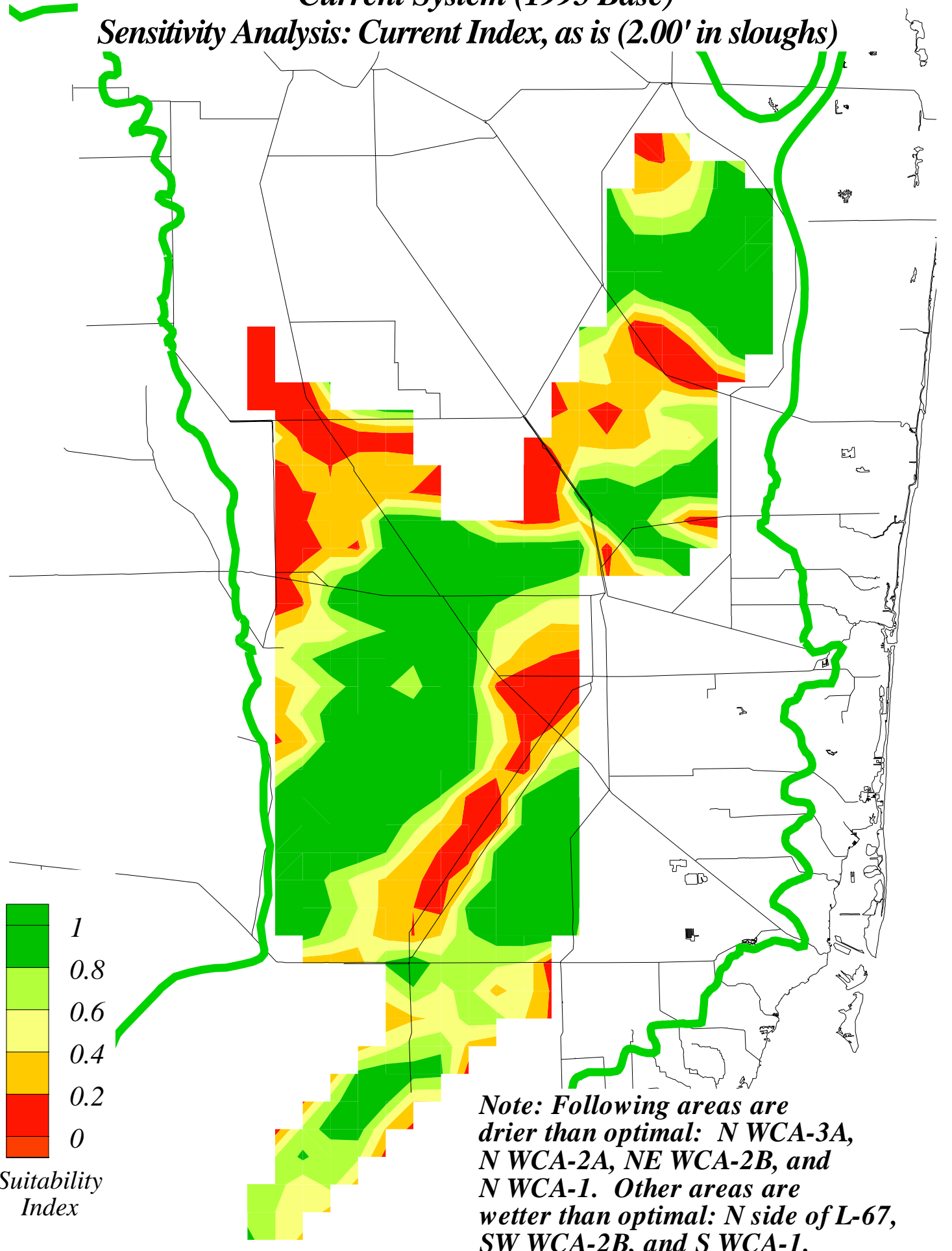
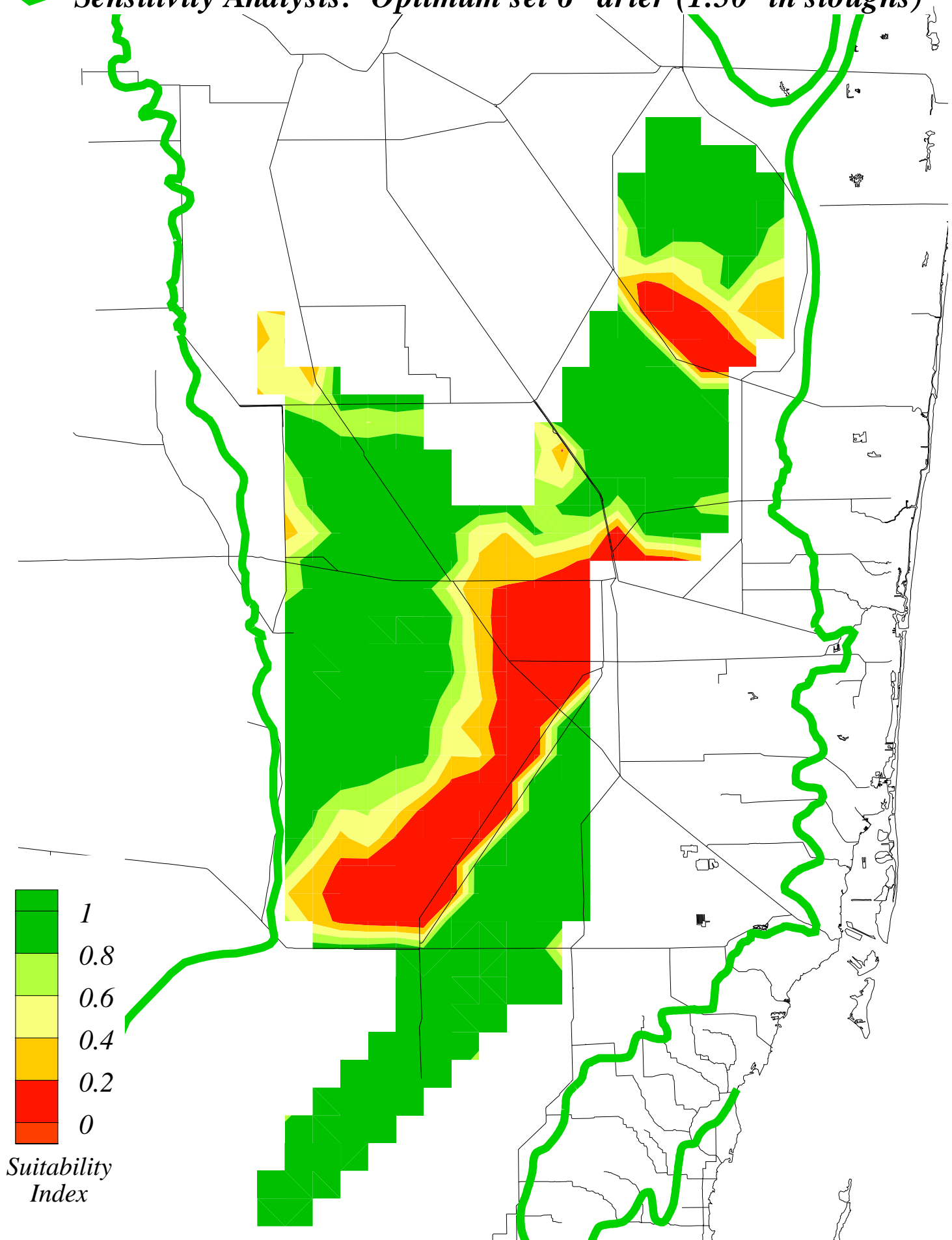


***Water Depth Suitability Index for Ridge & Slough Landscape
Current System (1995 Base)***



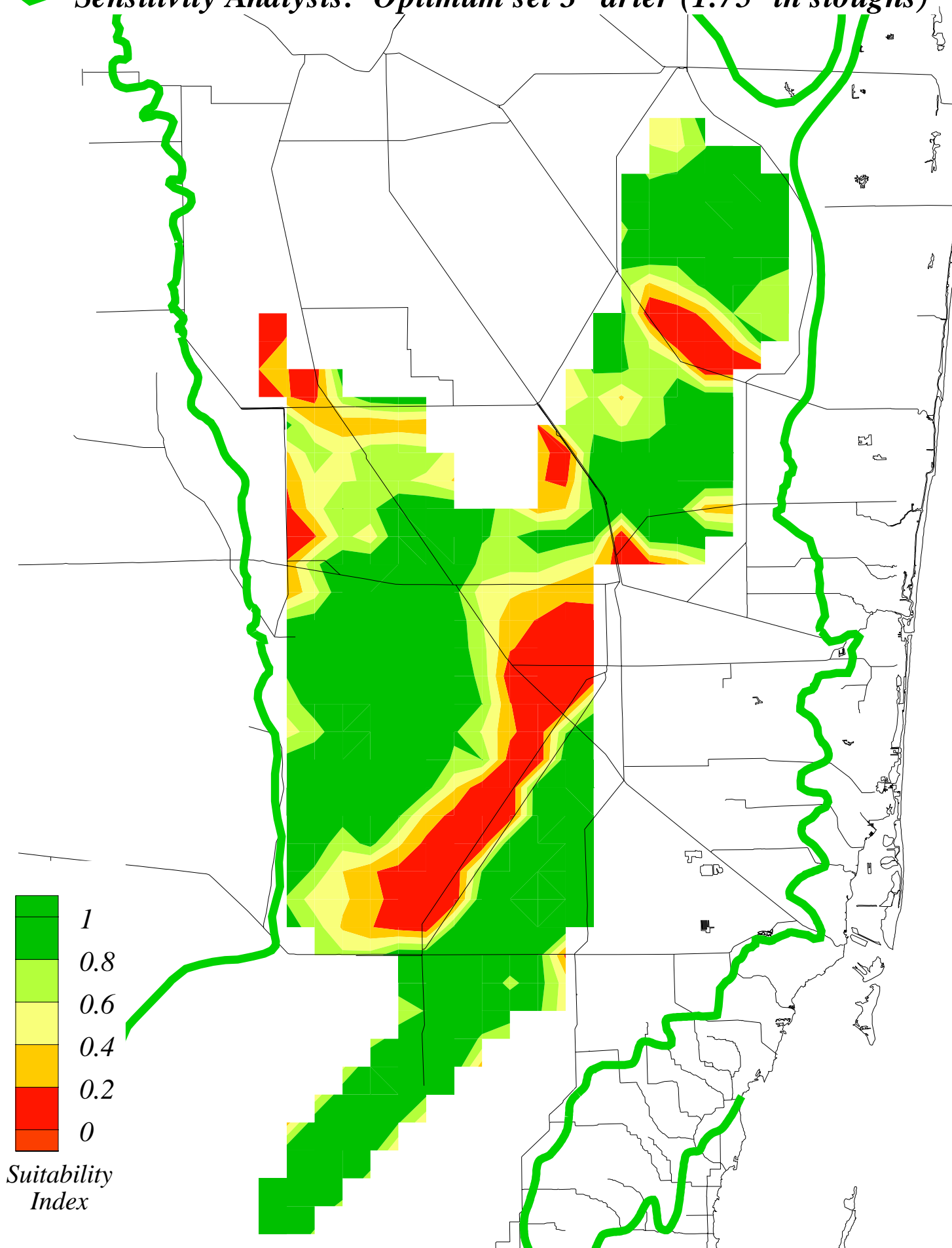
***Water Depth Suitability Index for Ridge & Slough Landscape
Current System (1995 Base SFWMM v3.5)***

✓ Sensitivity Analysis: Optimum set 6" drier (1.50' in sloughs)



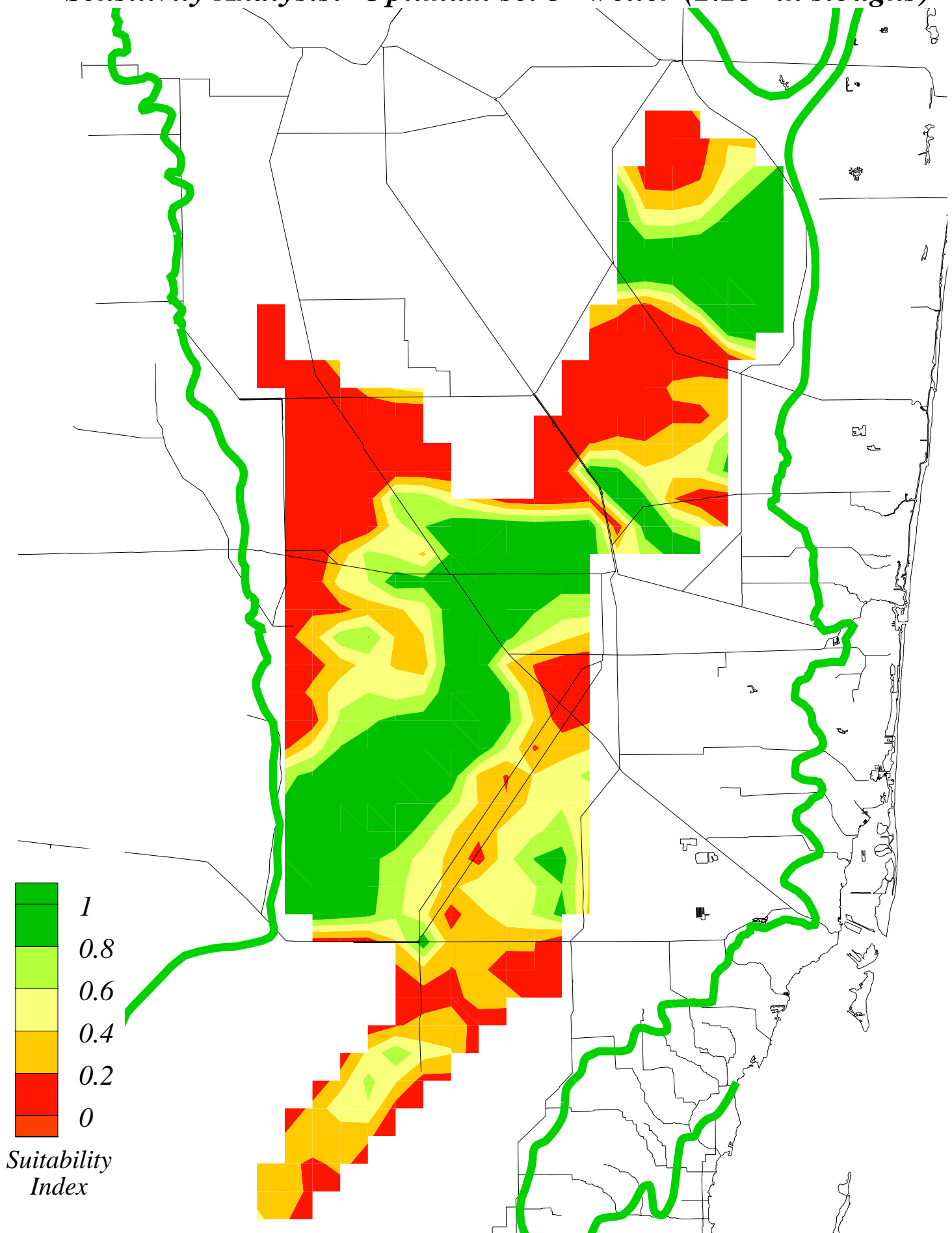
***Water Depth Suitability Index for Ridge & Slough Landscape
Current System (1995 Base SFWMM v3.5)***

✓ Sensitivity Analysis: Optimum set 3" drier (1.75' in sloughs)



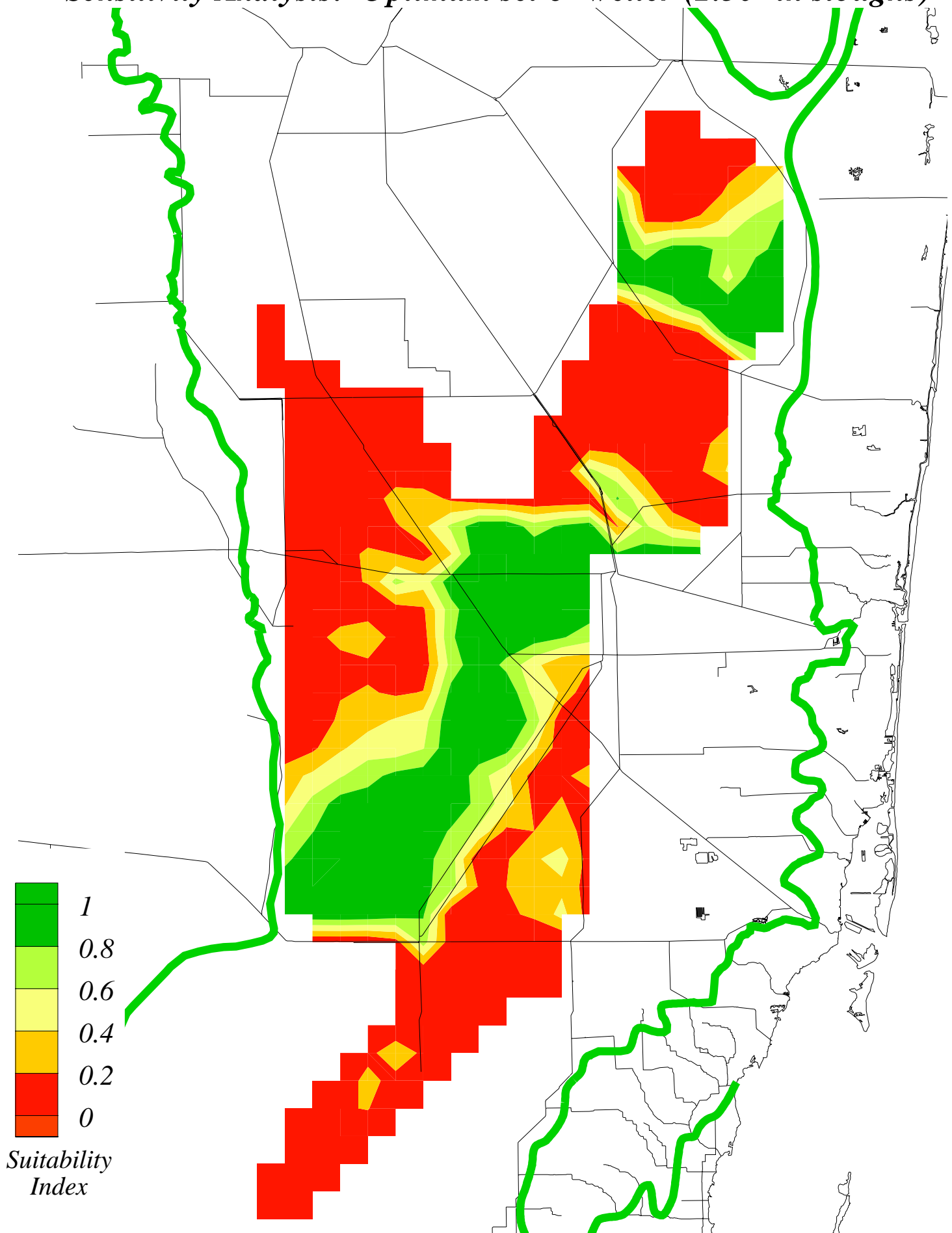
***Water Depth Suitability Index for Ridge & Slough Landscape
Current System (1995 Base SFWMM v3.5)***

✓ Sensitivity Analysis: Optimum set 3" wetter (2.25' in sloughs)



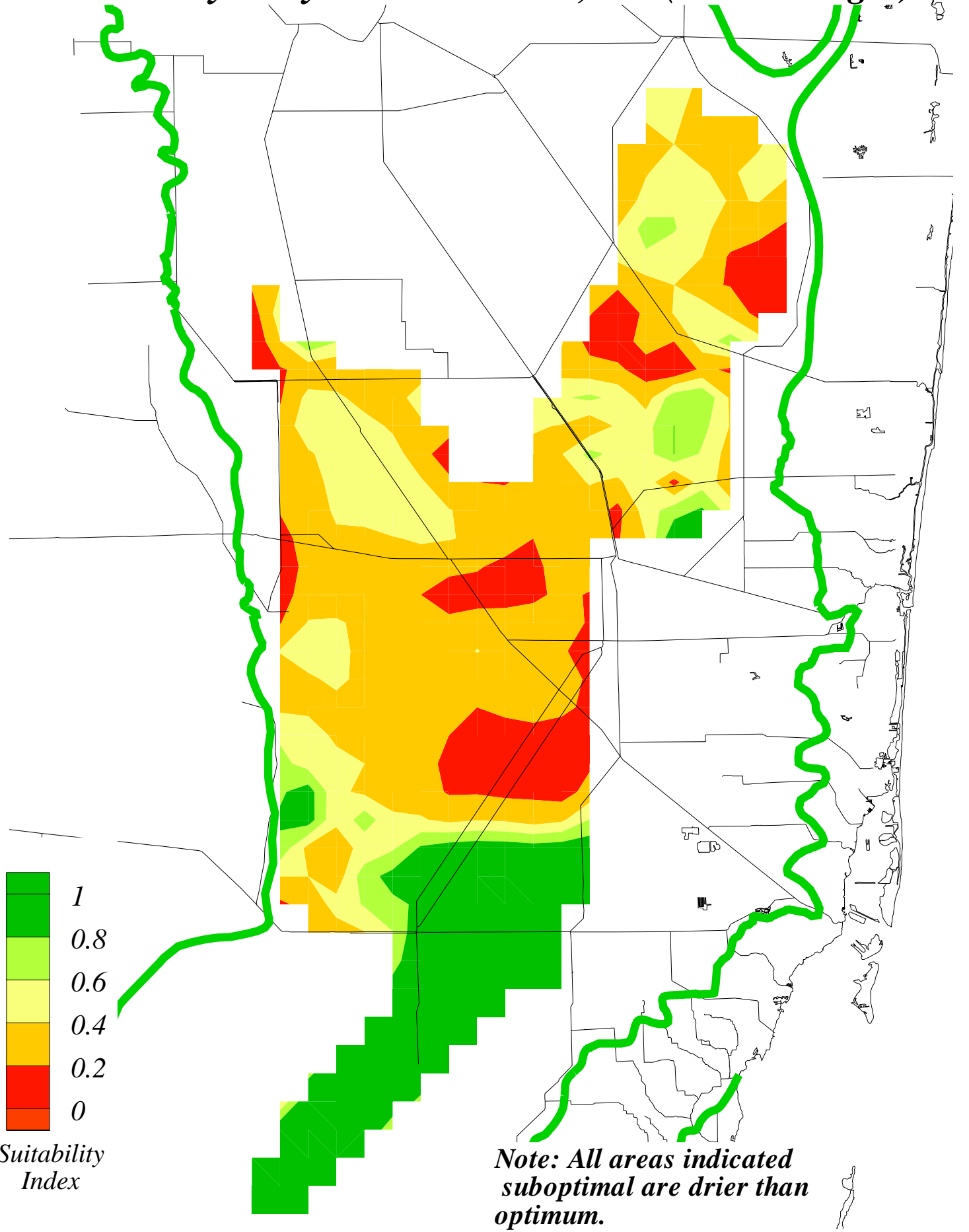
***Water Depth Suitability Index for Ridge & Slough Landscape
Current System (1995 Base SFWMM v3.5)***

✓ Sensitivity Analysis: Optimum set 6" wetter (2.50' in sloughs)



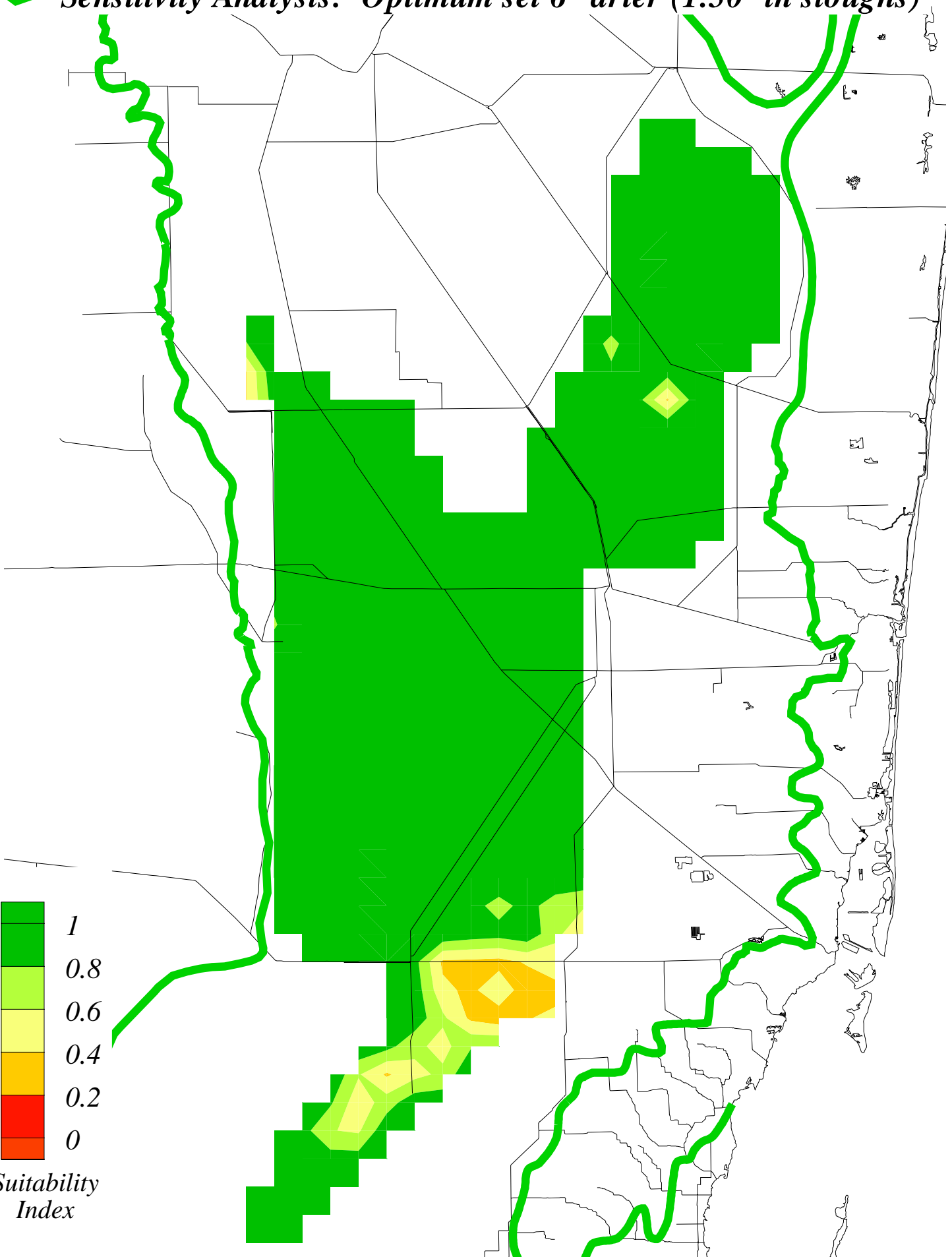
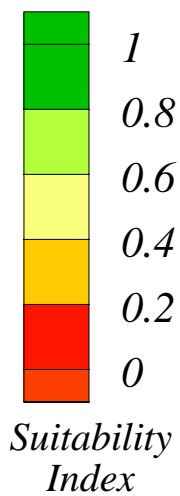
***Water Depth Suitability Index for Ridge & Slough Landscape
Natural System (NSM v4.5)***

Sensitivity Analysis: Current Index, as is (2.00' in sloughs)



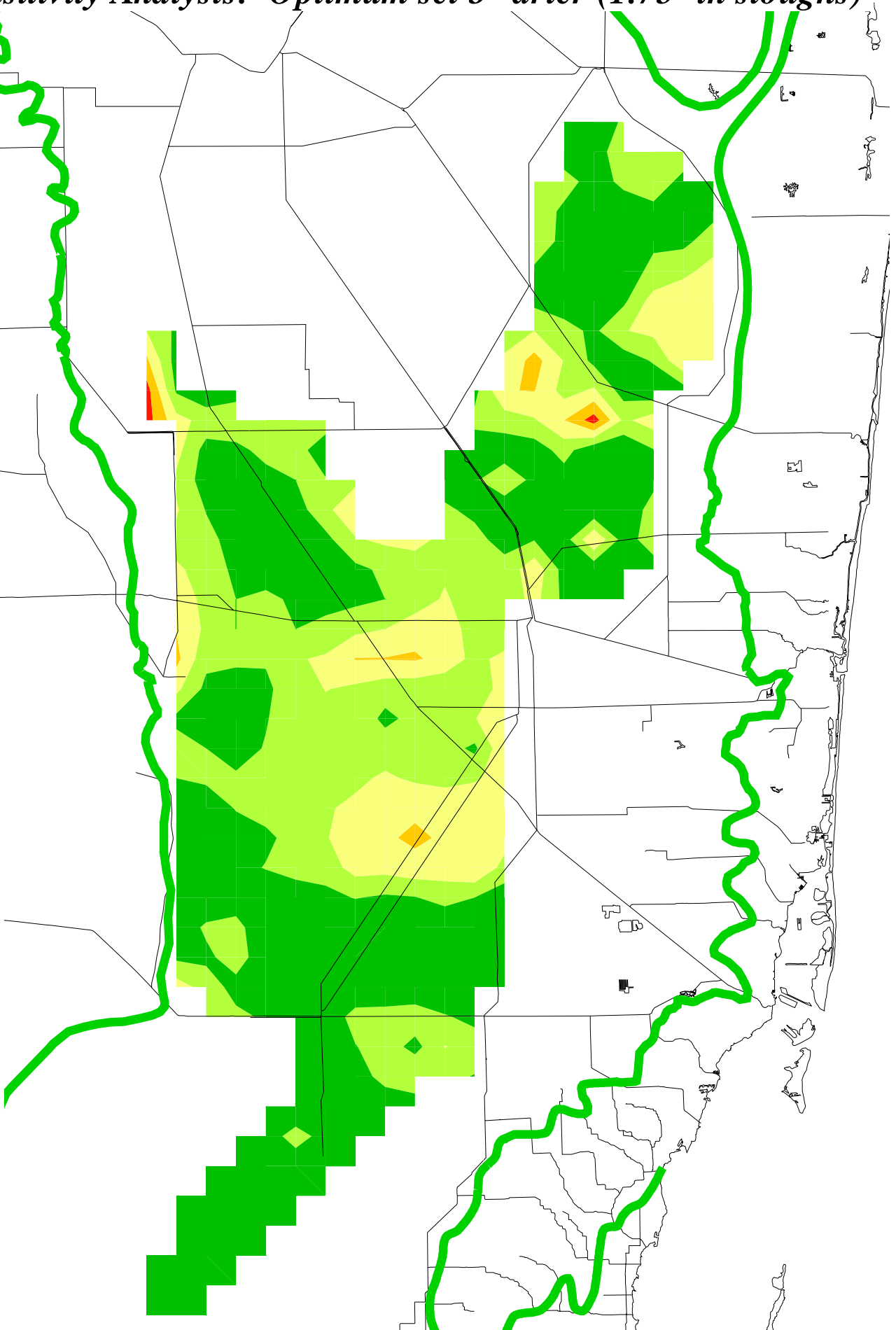
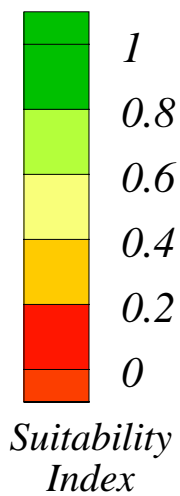
*Water Depth Suitability Index for Ridge & Slough Landscape
Natural System (NSM v4.5)*

 *Sensitivity Analysis: Optimum set 6" drier (1.50' in sloughs)*



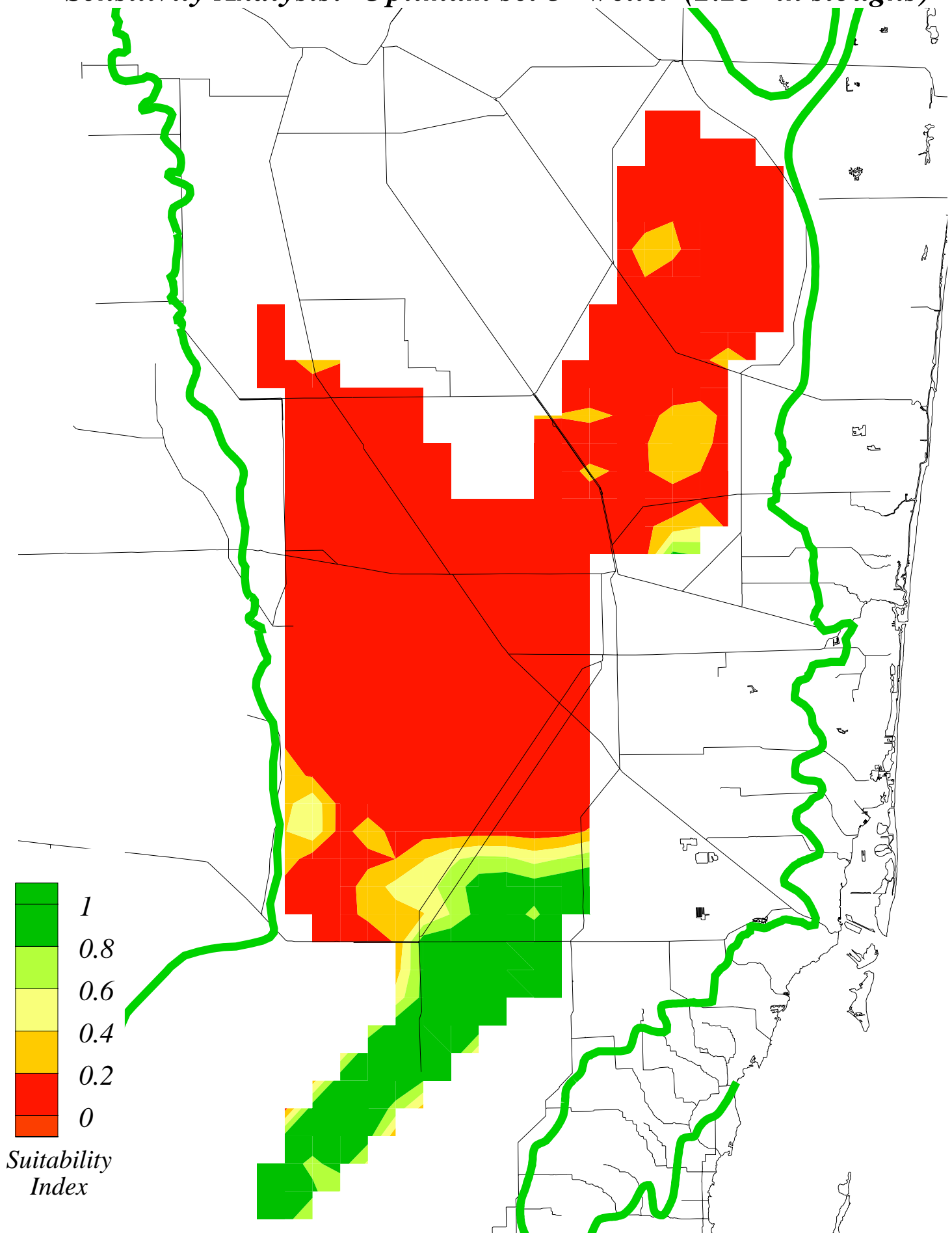
*Water Depth Suitability Index for Ridge & Slough Landscape
Natural System (NSM v4.5)*

 *Sensitivity Analysis: Optimum set 3" drier (1.75' in sloughs)*



*Water Depth Suitability Index for Ridge & Slough Landscape
Natural System (NSM v4.5)*

✓ *Sensitivity Analysis: Optimum set 3" wetter (2.25' in sloughs)*



*Water Depth Suitability Index for Ridge & Slough Landscape
Natural System (NSM v4.5)*

✓ *Sensitivity Analysis: Optimum set 6" wetter (2.50' in sloughs)*

