

Canal 18 Restoration-Revegetation Program

Access Facilities

The various projects created access facilities for fishing, viewing the canal and for launching small boats into the canal. The boat launching ramps are typically limited to residents of the various subdivisions. The fishing platforms and observation platforms in the County Park are open to the public.



PROJECT PHOTOGRAPHS

Access Facilities Canal 18 Restoration



Fishing Platform and Observation Platform



Hiking Trail with Observation Platform

Access Facilities Canal 18 Restoration



ADA crossing over creek and Observation Platform



Fishing Platform

Access Facilities Canal 18 Restoration



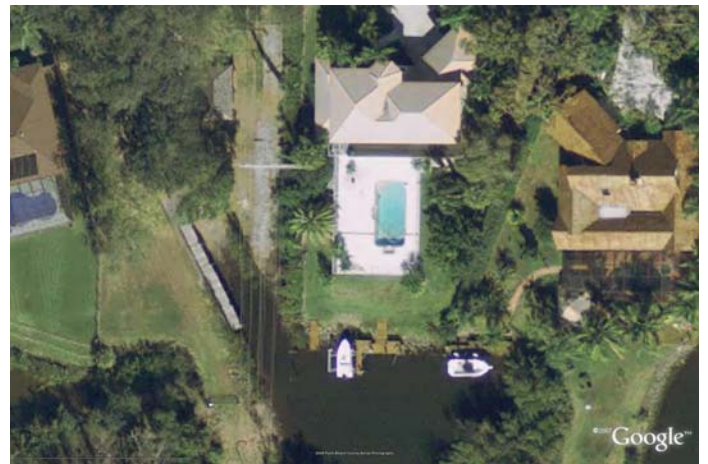
Subdivision Boat Ramp Jupiter Landings



Subdivision Boat Ramp Riverwalk



Subdivision Viewing Platform Riverwalk



Subdivision Boat Ramp River Oaks



Subdivision Viewing Platform Riverwalk