

This instrument prepared by:
Daniel M. Mackler, Esq.
Gunster, Yoakley & Stewart, P.A.
450 E. Las Olas Blvd., Suite 1400
Ft. Lauderdale, FL 33301

DOCUMENTARY STAMP TAX IN THE SUM OF \$1,381,788.80 WAS PAID AT THE TIME OF RECORDING OF THAT CERTAIN STATUTORY WARRANTY DEED FROM SOUTHERN GARDENS GROVES CORPORATION TO SOUTH FLORIDA WATER MANAGEMENT DISTRICT RECORDED _____, 2010, IN OFFICIAL RECORDS BOOK _____, PAGE _____, OF THE PUBLIC RECORDS OF HENDRY COUNTY, FLORIDA (THE "HENDRY DEED"), BASED ON CONSIDERATION OF \$197,398,372.08, REPRESENTING THE CONSIDERATION AND DOCUMENTARY STAMP TAX DUE FOR (i) THE REAL PROPERTY CONVEYED BY THIS DEED; AND (ii) THE REAL PROPERTY CONVEYED BY THE HENDRY DEED.

STATUTORY WARRANTY DEED

(Wherever used herein, the terms "Grantor" and "Grantee" shall include singular and plural, heirs, legal representatives, and assigns of individuals, and the successors and assigns of corporations, wherever the context so admits or requires.)

THIS INDENTURE, made this 12 day of October, 2010, between **UNITED STATES SUGAR CORPORATION**, a Delaware corporation, whose post office address is 111 Ponce de Leon Avenue, Clewiston, Florida 33440, ("Grantor"), and **SOUTH FLORIDA WATER MANAGEMENT DISTRICT**, a public corporation of the State of Florida, whose post office address is P.O. Box 24680, West Palm Beach, FL 33416-4680 ("Grantee").

WITNESSETH, That Grantor, for and in consideration of the sum of TEN AND NO/100 (\$10.00) DOLLARS to it in hand paid by Grantee, the receipt whereof is hereby acknowledged, has granted, bargained, and sold to Grantee, its successors and assigns forever, the following described land, situate, lying and being in the County of Palm Beach, State of Florida, to wit:

See **Exhibit A** attached hereto and made a part hereof (the "Land").

TOGETHER with all tenements, hereditaments, and appurtenances thereto belonging or in anywise appertaining.

SUBJECT TO zoning; restrictions, prohibitions and other requirements imposed by governmental authority; easements, restrictions, reservations, covenants and rights of way of record, if any, but without the intent to reimpose any of the foregoing; and taxes for the year of 2010 and subsequent years.

AND Grantor does hereby fully warrant the title to said Land, and will defend the same against the lawful claims of all persons whomsoever.

TO HAVE AND TO HOLD the same in fee simple forever.

IN WITNESS WHEREOF, Grantor has hereunto set its hand and seal the day and year first above written.

Signed, sealed and delivered
in the presence of:

GRANTOR:

UNITED STATES SUGAR
CORPORATION, a Delaware corporation

By: Robert H. Buker, Jr.
Name: Robert H. Buker, Jr.
Title: President and CEO

Edward Almeida
Signature of Witness
EDWARD ALMEIDA

Luke Umphries
Printed Name of Witness
Luke Umphries
Signature of Witness
Luke Umphries
Printed Name of Witness

STATE OF FLORIDA
COUNTY OF PALM BEACH

The foregoing Statutory Warranty Deed was acknowledged before me this 7th day of October, 2010, by Robert H. Buker, Jr., as President and CEO of **UNITED STATES SUGAR CORPORATION**, a Delaware corporation, for said corporation, who (X) is personally known to me, OR () has produced _____ as identification.



My Commission Expires:

Kay Brasecker
Notary Public

Kay Brasecker
Printed Name of Notary Public

Exhibit A

Legal Description

CLIENT: South Florida Water Management District

PROJECT: River Of Grass

GCY PROJECT NO.: 08-1050-05 and 08-1050-09

SUBJECT: Legal Descriptions for Tracts: SC 200-008, and C4200-006.

MEMO: Attached are the legal descriptions prepared by GCY, Inc. that have completed the review process by Cooner and Associates, Inc. under their contract with South Florida Water Management District. I hereby attest that the legal descriptions attached hereto are the same descriptions as those which appear on the face of the following boundary surveys prepared by GCY, Incorporated for the South Florida Water Management District bearing the following titles:

River of Grass Tracts SC 200-008 and C4200-006, with a date of survey of 9/4/2010, including 3 revisions;



09/30/2010

Signing Date

Legal Description

The following described lands in Palm Beach County, Florida:

All that part of Section 7, Township 41 South, Range 38 East, Palm Beach County, Florida lying South and West of the South Florida Water Management District Levee L-8 right-of-way;

LESS AND EXCEPT that part of said Section 7 lying South and West of the following described line, hereinafter referred to as the "200-008 line":

Commence at the Northwest corner of Section 7, Township 41 South, Range 38 East from which the Northwest corner of Section 6, Township 41 South, Range 38 East bears N 00° 02' 57" E, a distance of 5282.70 feet; thence along the West line of said Section 7, S 00° 02' 57" W, a distance of 262.20 feet to the South line of the South Florida Water Management Levee L-8 right-of-way; thence N 89° 31' 05" E along the South line of said L-8 right-of-way, a distance of 57.92 feet to the Point of Beginning; thence departing said L-8 right-of-way, S 00° 18' 49" E, a distance of 3434.90 feet; thence S 00° 00' 35" E, a distance of 1578.22 feet; thence S 04° 26' 50" E, a distance of 175.47 feet; thence S 89° 49' 31" E, a distance of 2515.50 feet; thence N 87° 25' 28" E, a distance of 195.83 feet; thence S 00° 15' 13" W, a distance of 2711.51 feet; thence S 00° 07' 47" W, a distance of 2226.08 feet to the North line of United States Sugar Corporation Railroad Corridor as described in Official Records Book 23180, page 854, Public Records of Palm Beach County, Florida; thence along said North line

River of Grass Tract SC 200-008
River of Grass Tract C4200-006



INCORPORATED
PROFESSIONAL SURVEYORS AND MAPPERS
CERTIFICATE OF AUTHORIZATION LB 4108
CORPORATE OFFICE: P.O. BOX 1469 • 1505 SW MARTIN HWY. • PALM CITY, FL 34981 (800) 386-1066
TALLAHASSEE OFFICE: 1990 COMMONWEALTH LANE • TALLAHASSEE, FL 32303 (850) 536-8455

SKETCH OF LEGAL DESCRIPTION FOR;

S.F.W.M.D.

PALM BEACH COUNTY,

FLORIDA

Scale: AS NOTED

Date: 9/29/10

Drawn By: JHY

Checked: MRW

File & Drawing No.:

08-1050-06

Sheet

1 of 14

NO.	REVISIONS	DATE	BY

Drawing Name: Combined Legal 1_1-9.dwg

the following courses and distances: S 61° 39' 38" E, a distance of 42.74 feet; thence N 89° 47' 19" E, a distance of 1243.94 feet; thence S 85° 39' 04" E, a distance of 427.64 feet; thence N 89° 47' 19" E, a distance of 622.68 feet; thence departing said North line, S 00° 07' 54" E, a distance of 80.00 feet to the South line of said United States Sugar Corporation Railroad Corridor; thence S 00° 07' 54" E, a distance of 2697.92 feet; thence S 00° 07' 34" E, a distance of 2631.50 feet; thence S 00° 03' 32" W, a distance of 2620.96 feet; thence S 00° 18' 04" E, a distance of 2699.47 feet; thence S 02° 43' 56" E, a distance of 1708.26 feet; thence S 02° 15' 05" E, a distance of 857.38 feet; thence S 02° 31' 52" E, a distance of 2158.01 feet; thence S 02° 32' 11" E, a distance of 508.94 feet to the South line of Section 32, Township 41 South, Range 38 East and the Point of Termination of said described line, said point of termination bears N 89° 47' 08" E, along the South line of Section 32, a distance of 173.98 feet from the Southwest corner of said Section 32.

AND:

All that part of Section 8, Township 41 South, Range 38 East, Palm Beach County, Florida lying South and West of the South Florida Water Management District Levee L-8 right-of-way.

AND:

All that part of Section 16, Township 41 South, Range 38 East, Palm Beach County, Florida lying South and West of the South Florida Water Management District Levee L-8 right-of-way;

LESS AND EXCEPT that part of said Section 16 lying within the United States Sugar Corporation Railroad Corridor as described in Official Records Book 23180, page 854, Public Records of Palm Beach County, Florida.

AND:

All that part of Section 17, Township 41 South, Range 38 East, Palm Beach County, Florida lying South and West of the South Florida Water Management District Levee L-8 right-of-way;

LESS AND EXCEPT that part of said Section 17 lying within the United States Sugar Corporation Railroad Corridor as described in Official Records Book 23180, page 854, Public Records of Palm Beach County, Florida;

Also LESS AND EXCEPT that part of said Section 17 lying South and West of the aforesaid "200-008 line".

AND:

All of Section 18, Township 41 South, Range 38 East, Palm Beach County, Florida;

LESS AND EXCEPT that part of said Section 18 lying within the United States Sugar Corporation Railroad Corridor as described in Official Records Book 23180, page 854, Public Records of Palm Beach County, Florida;

Also LESS AND EXCEPT that part of said Section 18 lying South and West of the aforesaid "200-008 line".

AND:


All of Section 19, Township 41 South, Range 38 East, Palm Beach County, Florida;

LESS AND EXCEPT that part of said Section 19 lying within the United States Sugar Corporation Railroad Corridor as described in Official Records Book 23180, page 854, Public Records of Palm Beach County, Florida;

Also LESS AND EXCEPT that part of said Section 19 lying South and West of the aforesaid "200-008 line".

River of Grass Tract SC 200-008

NO.	REVISIONS	DATE	BY

 QCY INCORPORATED PROFESSIONAL SURVEYORS AND MAPPERS CERTIFICATE OF AUTHORIZATION LB 4108 CORPORATE OFFICE: PO BOX 1469 • 1505 SW MARTIN HWY. • PALM CITY, FL 34991 • (800) 386-1066 TALLAHASSEE OFFICE: 1990 COMMONWEALTH LANE • TALLAHASSEE, FL 32303 • (850) 536-8455	
---	--

SKETCH OF LEGAL DESCRIPTION FOR: S.F.W.M.D. PALM BEACH COUNTY, FLORIDA		
Scale: NONE	Date: 9/29/10	File & Drawing No.: 08-1050-06
Drawn By: JHY	Checked: MRW	Sheet 2 OF 14

Drawing Name: Combined Legal 1_1-9.dwg

AND:

All of Section 20, Township 41 South, Range 38 East, Palm Beach County, Florida;

LESS AND EXCEPT that part of said Section 20 lying within the United States Sugar Corporation Railroad Corridor as described in Official Records Book 23180, page 854, Public Records of Palm Beach County, Florida;

Also LESS AND EXCEPT that part of said Section 20 lying South and West of the aforesaid "200-008 line".

AND:

All that part of Section 21, Township 41 South, Range 38 East, Palm Beach County, Florida lying South and West of the South Florida Water Management District Levee L-8 right-of-way;

LESS AND EXCEPT that part of said Section 21 lying within the United States Sugar Corporation Railroad Corridor as described in Official Records Book 23180, page 854, Public Records of Palm Beach County, Florida.

AND:

All that part of Section 22, Township 41 South, Range 38 East, Palm Beach County, Florida lying South and West of the South Florida Water Management District Levee L-8 right-of-way;

LESS AND EXCEPT that part of said Section 22 lying within the United States Sugar Corporation Railroad Corridor as described in Official Records Book 23180, page 854, Public Records of Palm Beach County, Florida.

AND:

All that part of Section 25, Township 41 South, Range 38 East, Palm Beach County, Florida lying South and West of the South Florida Water Management District Levee L-8 right-of-way;

LESS AND EXCEPT that part of said Section 25 lying within the United States Sugar Corporation Railroad Corridor as described in Official Records Book 23180, page 854, Public Records of Palm Beach County, Florida.

AND:

All that part of Section 26, Township 41 South, Range 38 East, Palm Beach County, Florida lying South and West of the South Florida Water Management District Levee L-8 right-of-way;

LESS AND EXCEPT that part of said Section 26 lying within the United States Sugar Corporation Railroad Corridor as described in Official Records Book 23180, page 854, Public Records of Palm Beach County, Florida.

AND:

All that part of Section 27, Township 41 South, Range 38 East, Palm Beach County, Florida lying South and West of the South Florida Water Management District Levee L-8 right-of-way;

LESS AND EXCEPT that part of said Section 27 lying within the United States Sugar Corporation Railroad Corridor as described in Official Records Book 23180, page 854, Public Records of Palm Beach County, Florida.

River of Grass Tract SC 200-008



INCORPORATED
PROFESSIONAL SURVEYORS AND MAPPERS
CERTIFICATE OF AUTHORIZATION LB 4108
CORPORATE OFFICE TALLAHASSEE OFFICE
PO BOX 1469 • 1505 SW MARTIN HWY. 1990 COMMONWEALTH LANE
PALM CITY, FL 34991 TALLAHASSEE, FL 32303
(800) 386-1066 (850) 536-8455

SKETCH OF LEGAL DESCRIPTION FOR;

S.F.W.M.D.

PALM BEACH COUNTY,

FLORIDA

Scale: NONE Date: 9/29/10
Drawn By: JHY Checked: MRW

File & Drawing No.: 08-1050-06
Sheet 3 OF 14

Drawing Name: Combined Legal 1_1-9.dwg

AND:

All of Section 28, Township 41 South, Range 38 East, Palm Beach County, Florida.

AND:

All of Section 29, Township 41 South, Range 38 East, Palm Beach County, Florida;

LESS AND EXCEPT that part of said Section 29 lying South and West of the aforesaid "200-008 line".

AND:

All of Section 30, Township 41 South, Range 38 East, Palm Beach County, Florida;

LESS AND EXCEPT that part of said Section 30 lying South and West of the aforesaid "200-008 line".

AND:

All of Section 31, Township 41 South, Range 38 East, Palm Beach County, Florida;

LESS AND EXCEPT that part of said Section 31 lying South and West of the aforesaid "200-008 line".

AND:

All of Section 32, Township 41 South, Range 38 East, Palm Beach County, Florida;

LESS AND EXCEPT that part of said Section 32 lying South and West of the aforesaid "200-008 line".

AND:

All of Section 33, Township 41 South, Range 38 East, Palm Beach County, Florida.

AND:

All of Section 34, Township 41 South, Range 38 East, Palm Beach County, Florida.

AND:

All that part of Section 35, Township 41 South, Range 38 East, Palm Beach County, Florida lying South and West of the South Florida Water Management District Levee L-8 right-of-way;

LESS AND EXCEPT that part of said Section 35 lying within the United States Sugar Corporation Railroad Corridor as described in Official Records Book 23180, page 854, Public Records of Palm Beach County, Florida.

AND:

All that part of Section 36, Township 41 South, Range 38 East, Palm Beach County, Florida lying South and West of the South Florida Water Management District Levee L-8 right-of-way;

LESS AND EXCEPT

That part of said Section 36 lying within the United States Sugar Corporation Railroad Corridor as described in Official Records Book 23180, page 854, Public Records Palm Beach, County, Florida.

River of Grass Tract SC 200-008



INCORPORATED
PROFESSIONAL SURVEYORS AND MAPPERS
CERTIFICATE OF AUTHORIZATION LB 4108
CORPORATE OFFICE TALLAHASSEE OFFICE
PO BOX 1469 • 1505 SW MARTIN HWY. 1990 COMMONWEALTH LANE
PALM CITY, FL 34991 TALLAHASSEE, FL 32303
(800) 386-1066 (850) 536-8455

SKETCH OF LEGAL DESCRIPTION FOR;

S.F.W.M.D.

PALM BEACH COUNTY,

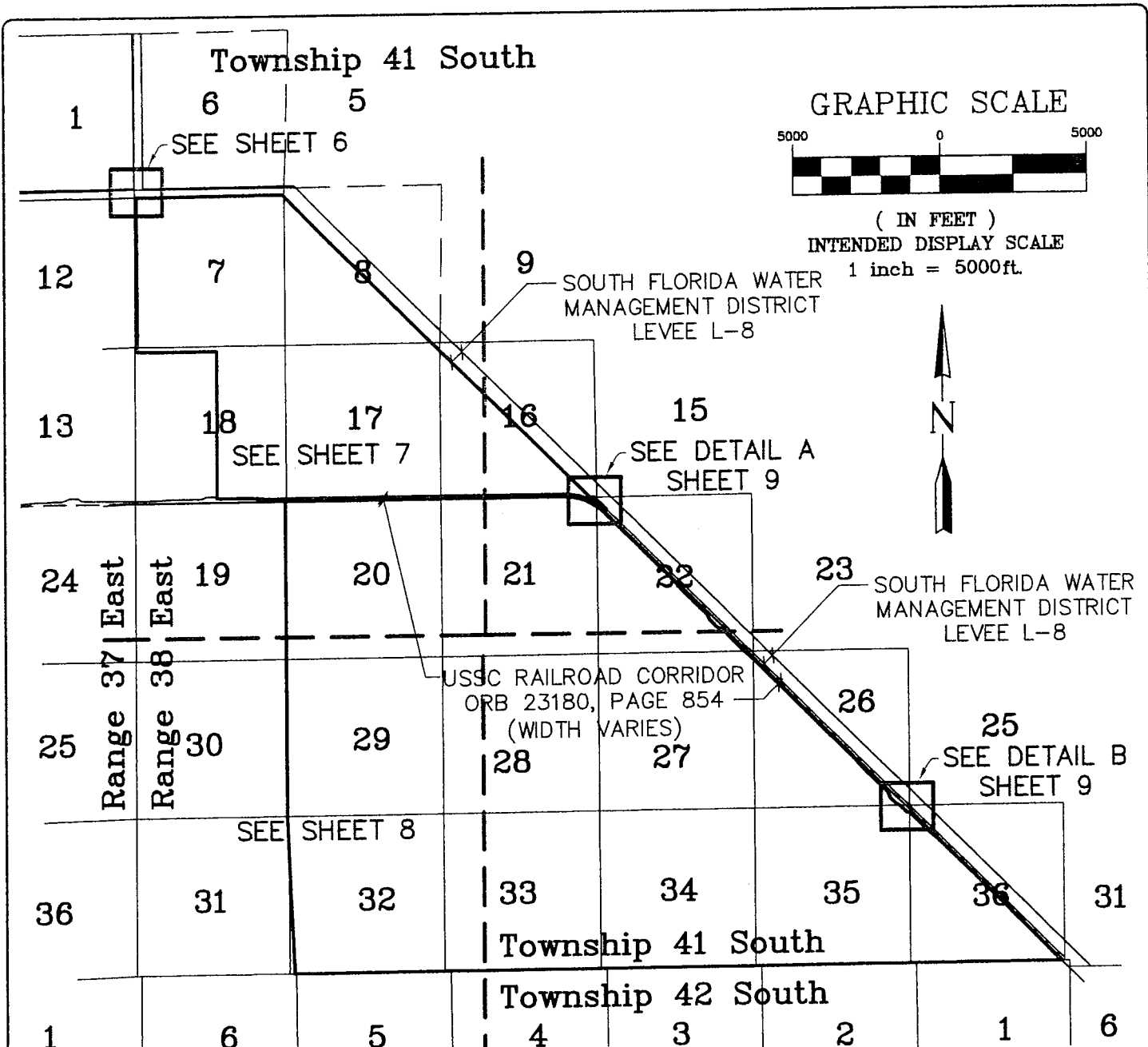
FLORIDA

Scale:	Date:
NONE	9/29/10
Drawn By:	Checked:
JHY	MRW

File & Drawing No.:
08-1050-06
Sheet
4 OF 14

NO.	REVISIONS	DATE	BY

Drawing Name: Combined Legal 1_1-9.dwg



LEGEND

ORB = OFFICIAL RECORDS BOOK
 R/W = RIGHT-OF-WAY
 S.F.W.M.D. = SOUTH FLORIDA WATER MANAGEMENT DISTRICT
 USSC = UNITED STATES SUGAR CORPORATION
 . = SEGMENT DELIMITER

7 8
 18 17
 = GRAPHIC DISPLAY OF SECTION CORNER

River of Grass Tract SC 200-008



INCORPORATED
 PROFESSIONAL SURVEYORS AND MAPPERS
 CERTIFICATE OF AUTHORIZATION LB 4108

CORPORATE OFFICE: PO BOX 1469 • 1505 SW MARTIN HWY. PALM CITY, FL 34991 (800) 386-1066
 TALLAHASSEE OFFICE: 1990 COMMONWEALTH LANE TALLAHASSEE, FL 32303 (850) 536-8455

SKETCH OF LEGAL DESCRIPTION FOR;

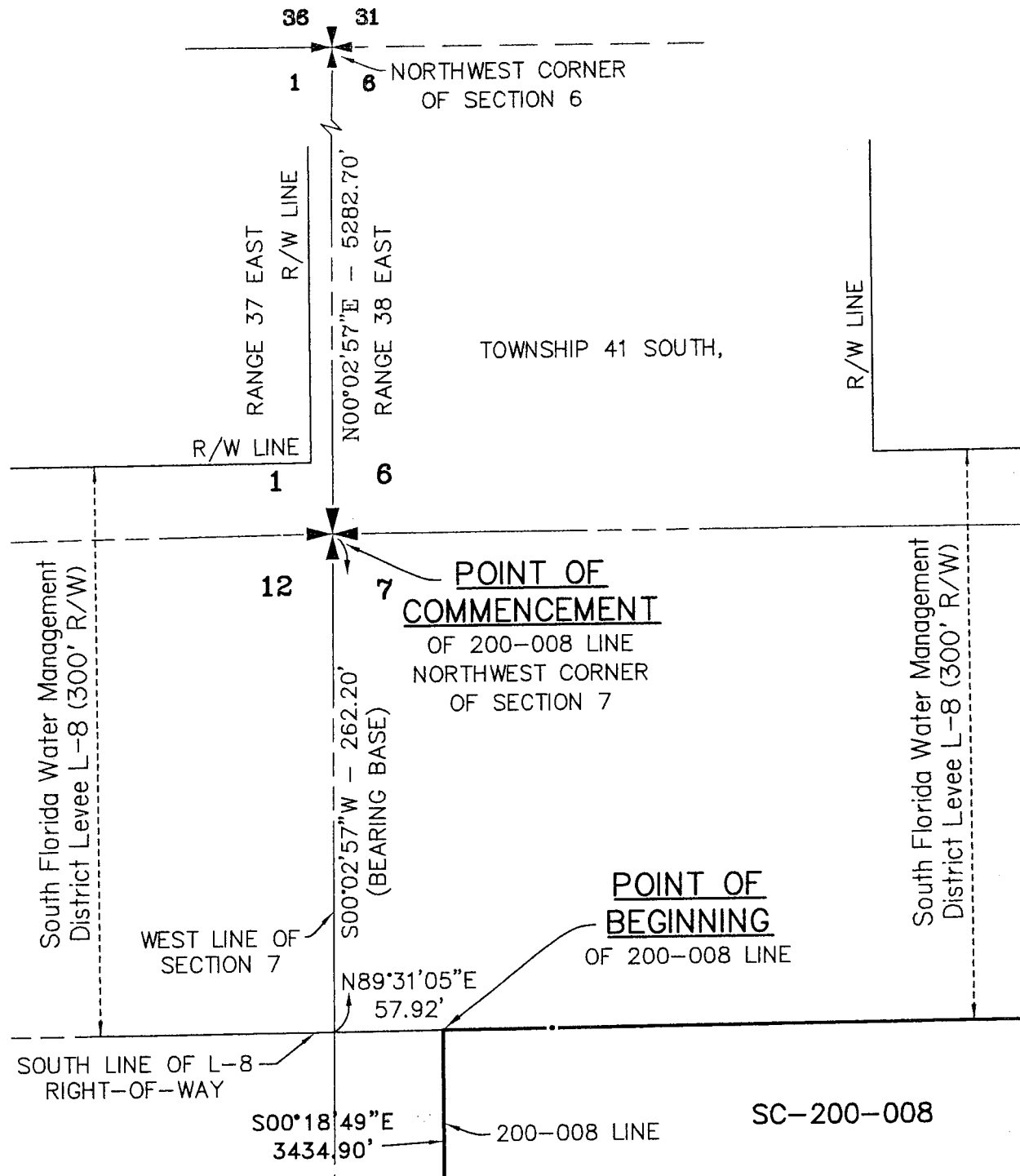
S.F.W.M.D.

PALM BEACH COUNTY, FLORIDA

Scale: AS NOTED
 Date: 9/29/10
 Drawn By: JHY
 Checked: MRW

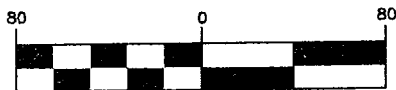
File & Drawing No.: 08-1050-06
 Sheet: 5 of 14

Drawing Name: Combined Legal 1_1-9.dwg



See Top of Sheet 7

GRAPHIC SCALE



(IN FEET)
INTENDED DISPLAY SCALE
1 inch = 80 ft.

River of Grass Tract SC 200-008



INCORPORATED
PROFESSIONAL SURVEYORS AND MAPPERS
CERTIFICATE OF AUTHORIZATION LB 4108
CORPORATE OFFICE TALLAHASSEE OFFICE
PO BOX 1469 • 1505 SW MARTIN HWY. 1990 COMMONWEALTH LANE
PALM CITY, FL 34991 TALLAHASSEE, FL 32303
(800) 386-1066 (850) 536-8455

SKETCH OF LEGAL DESCRIPTION FOR;

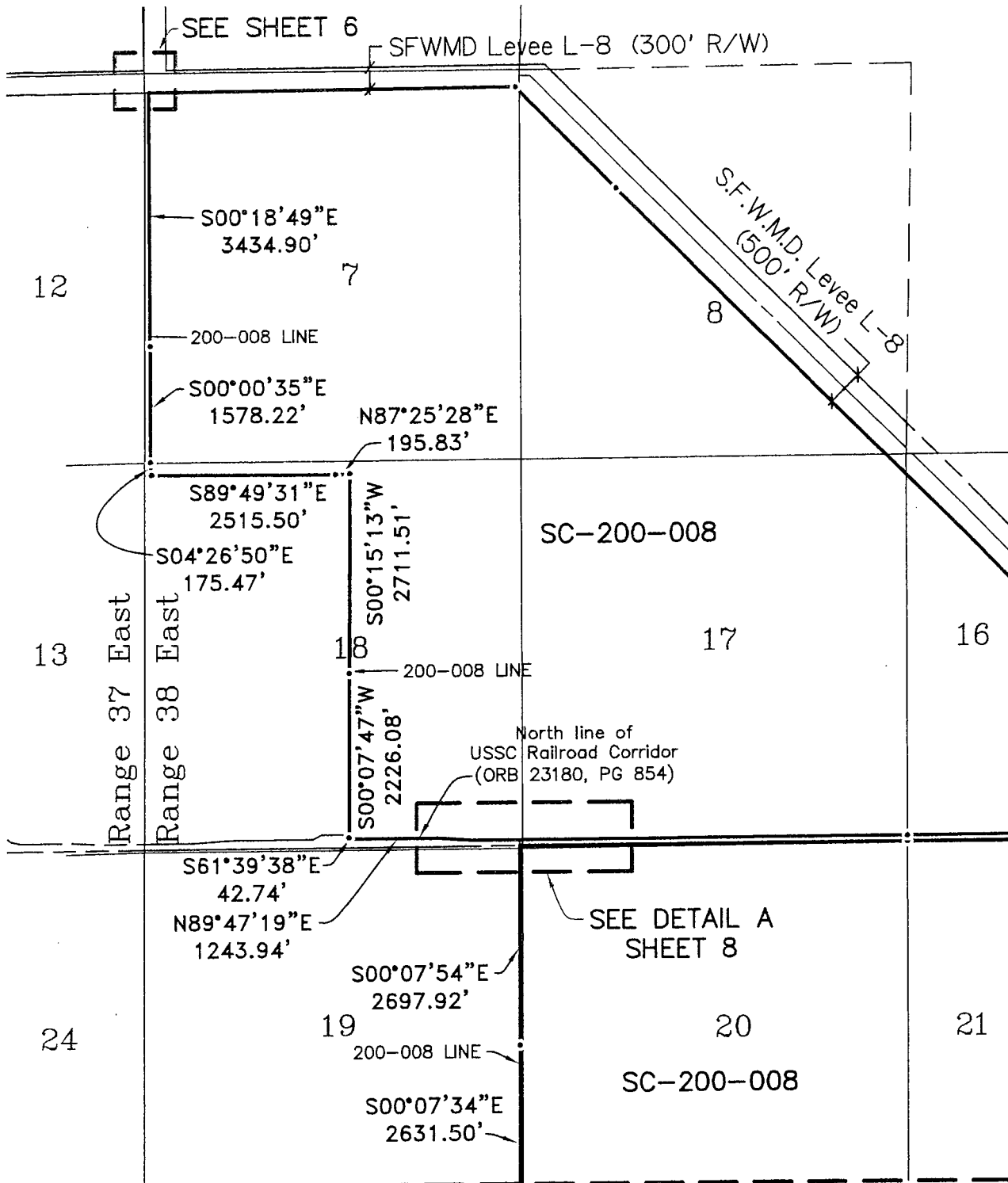
S.F.W.M.D.

PALM BEACH COUNTY,

FLORIDA

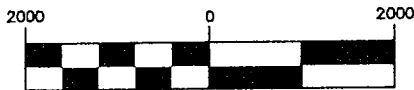
Scale: AS NOTED
Date: 9/29/10
Drawn By: JHY
Checked: MRW

File & Drawing No.: 08-1050-06
Sheet 6 of 14



See Detail A
Sheet 9

GRAPHIC SCALE



(IN FEET)
INTENDED DISPLAY SCALE
1 inch = 2000ft.

Matchline A - See Sheet 8
River of Grass Tract SC 200-008



INCORPORATED
PROFESSIONAL SURVEYORS AND MAPPERS
CERTIFICATE OF AUTHORIZATION LB 4108

CORPORATE OFFICE: PO BOX 1469 • 1505 SW MARTIN HWY. • PALM CITY, FL 34991 • (800) 386-1066
TALLAHASSEE OFFICE: 1990 COMMONWEALTH LANE • TALLAHASSEE, FL 32303 • (850) 536-8455

SKETCH OF LEGAL DESCRIPTION FOR;

S.F.W.M.D.

PALM BEACH COUNTY, FLORIDA

Scale: 1"=2000'
Date: 9/29/10
Drawn By: JHY
Checked: MRW

File & Drawing No.: 08-1050-06
Sheet 7 of 14

NO.	REVISIONS	DATE	BY
-----	-----------	------	----

Drawing Name: Combined Legal 1_1-9.dwg

Section 18 SC-200-008 Section 17
 N89°47'19"E S85°39'04"E N89°47'19"E
 1243.94' 427.64' 622.68'

North line of
 USSC Railroad Corridor

S00°07'54"E - 80.00'

USSC Railroad Corridor (ORB 23180, PG 854)

South line of USSC Railroad Corridor

S00°07'54"E - 2697.92'

Section 19

Section 20

SC-200-008

Detail A

(Intended Display Scale: 1"=400')

Matchline A - See Sheet 7

S00°07'34"E - 2631.50'

Range 37 East

Range 38 East

25

30

S00°03'32"W
 2620.96'

S00°18'04"E
 2699.47'

200-008 LINE

GRAPHIC SCALE



(IN FEET)

INTENDED DISPLAY SCALE

1 inch = 2000ft.

29

28

SC-200-008

36

31

32

33

S02°43'56"E
 1708.26'

S02°15'05"E - 857.38'

200-008 LINE

S02°31'52"E
 2158.01'

POINT OF
 TERMINATION

OF 200-008 LINE

SOUTH LINE OF SECTION 32

Township 41 South
 S02°32'11"E - 508.94'
 SOUTHWEST CORNER OF SECTION 32

N89°47'08"E - 173.98'

Township 42 South

River of Grass Tract SC 200-008



INCORPORATED
 PROFESSIONAL SURVEYORS AND MAPPERS
 CERTIFICATE OF AUTHORIZATION LB 4108

CORPORATE OFFICE
 PO BOX 1469 • 1505 SW MARTIN HWY.
 PALM CITY, FL 34981

TALLAHASSEE OFFICE
 1990 COMMONWEALTH LANE
 TALLAHASSEE, FL 32303
 (850) 536-8455

SKETCH OF LEGAL DESCRIPTION FOR:

S.F.W.M.D.

PALM BEACH COUNTY,

FLORIDA

Scale:

Date:

File & Drawing No.:

AS NOTED

9/29/10

08-1050-06

Drawn By:

Checked:

Sheet

JHY

MRW

8 of 14

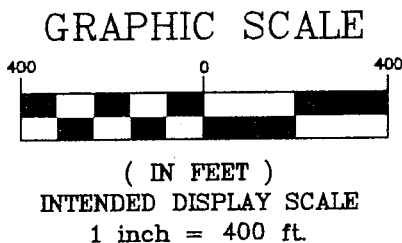
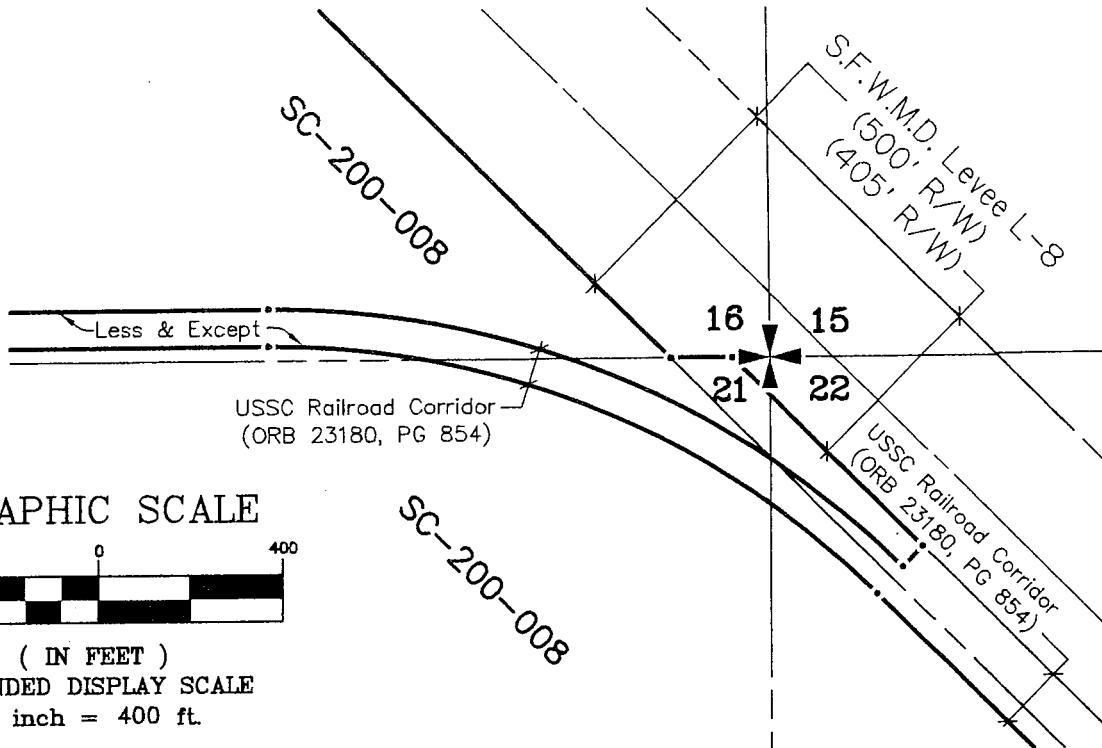
NO.

REVISIONS

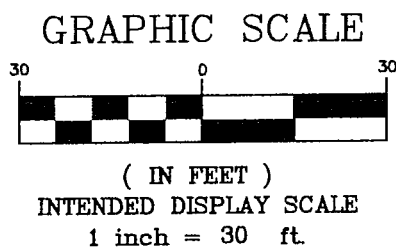
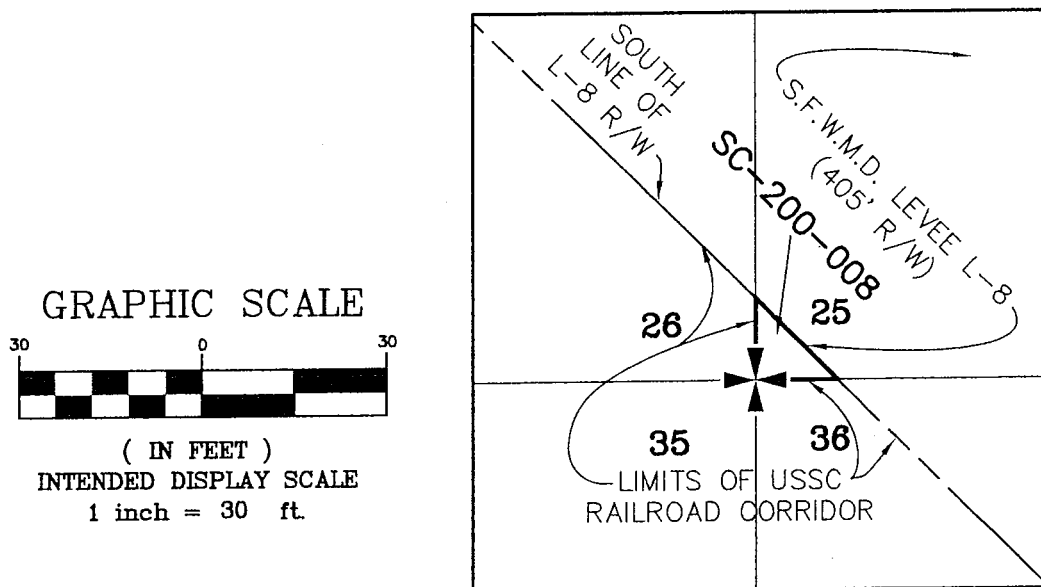
DATE

BY

Drawing Name: Combined Legal 1_1-9.dwg



DETAIL A
(INTENDED DISPLAY SCALE: 1"=400')



DETAIL B
(INTENDED DISPLAY SCALE: 1"=30')

River of Grass Tract SC 200-008



INCORPORATED
PROFESSIONAL SURVEYORS AND MAPPERS
CERTIFICATE OF AUTHORIZATION LB 4108
CORPORATE OFFICE TALLAHASSEE OFFICE
PO BOX 1465 • 1505 SW MARTIN HWY. 1990 COMMONWEALTH LANE
PALM CITY, FL 34991 TALLAHASSEE, FL 32303
(800) 386-1066 (850) 536-8455

SKETCH OF LEGAL DESCRIPTION FOR;
S.F.W.M.D.
PALM BEACH COUNTY, FLORIDA

Scale: 1"=400' Date: 9/29/10
Drawn By: JHY Checked: MRW

File & Drawing No.: 08-1050-06
Sheet 9 of 14

Legal Description

The following described lands in Palm Beach County, Florida:

All that part of Section 7, Township 41 South, Range 38 East, Palm Beach County, Florida lying within the South Florida Water Management District Levee L-8 right-of-way;

LESS AND EXCEPT a tract or parcel of land lying and situate in Sections 6 and 7, Township 41 South, Range 38 East, Palm Beach County, Florida, which tract or parcel is more particularly described as follows:
Beginning at the U.S. General Land Office pipe marking the Northwest corner of said Section 6, Township 41 South, Range 38 East, run S 00° 13' 00" W along the Range Line between Ranges 37 and 38 East, said Range Line being a straight line between the aforementioned U.S. General Land Office pipe and a like monument marking the Southwest corner of said Township, a distance of 5282.18 feet, more or less, to a railroad rail monument marking the Southwest corner of said Section 6; thence continue S 00° 13' 00" W, along said Range Line, a distance of 106.0 feet; thence run S 89° 47' 00" E, perpendicular to said Range Line, a distance of 50.0 feet to a point; thence run N 00° 15' 00" W, a distance of 5388.36 feet more or less to a point on the North line of Section 6, N 89° 33' 00" E from the Northwest corner of said Section; thence run S 89° 33' 00" W a distance of 6.0 feet to said Northwest corner of said Section 6, and the Point of Beginning.

AND:

All that part of Section 8, Township 41 South, Range 38 East, Palm Beach County, Florida lying within the South Florida Water Management District Levee L-8 right-of-way lying South and West of the centerline of easement for the South Florida Water Management District (formerly the Central and Southern Florida Flood Control District) Levee L-8.

AND:

All that part of Section 16, Township 41 South, Range 38 East, Palm Beach County, Florida lying within the South Florida Water Management District Levee L-8 right-of-way lying South and West of the centerline of easement for the South Florida Water Management District (formerly the Central and Southern Florida Flood Control District) Levee L-8.

AND:

All that part of Section 17, Township 41 South, Range 38 East, Palm Beach County, Florida lying within the South Florida Water Management District Levee L-8 right-of-way lying South and West of the centerline of easement for the South Florida Water Management District (formerly the Central and Southern Florida Flood Control District) Levee L-8.

AND:

All that part of Section 21, Township 41 South, Range 38 East, Palm Beach County, Florida lying within the South Florida Water Management District Levee L-8 right-of-way.

AND:

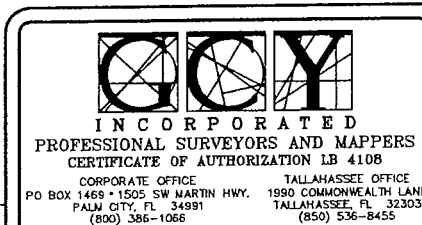
All that part of Section 22, Township 41 South, Range 38 East, Palm Beach County, Florida lying within the South Florida Water Management District Levee L-8 right-of-way;

LESS AND EXCEPT the Northeast diagonal one-half of Section 22;

Also LESS AND EXCEPT that part of said Section 22 lying within the United States Sugar Corporation Railroad Corridor as described in Official Records Book 23180, page 854, Public Records of Palm Beach County, Florida.

River of Grass Tract C4200-006

NO.	REVISIONS	DATE	BY



SKETCH OF LEGAL DESCRIPTION FOR;

S.F.W.M.D.

PALM BEACH COUNTY,

FLORIDA

Scale: NONE
Date: 9/29/10
Drawn By: JHY
Checked: MRW

File & Drawing No.: 08-1050-05
Sheet 10 of 14

Drawing Name: Combined Legal 1_10-14.dwg

AND:

All that part of Section 25, Township 41 South, Range 38 East, Palm Beach County, Florida lying within the South Florida Water Management District Levee L-8 right-of-way lying South and West of the Southwesterly line of that parcel described in Official Records Book 1971, page 1863 of the Public Records of Palm Beach County, Florida being described therein as the centerline of easement for the South Florida Water Management District (formerly the Central and Southern Florida Flood Control District) Levee L-8;

LESS AND EXCEPT that part of said Section 25 lying within the United States Sugar Corporation Railroad Corridor as described in Official Records Book 23180, page 854, Public Records of Palm Beach County, Florida.

AND:

All that part of Section 26, Township 41 South, Range 38 East, Palm Beach County, Florida lying within the South Florida Water Management District Levee L-8 right-of-way lying South and West of the Southwesterly line of that parcel described in Official Records Book 1971, page 1863 of the Public Records of Palm Beach County being described therein as the centerline of easement for the South Florida Water Management District (formerly the Central and Southern Florida Flood Control District) Levee L-8;

LESS AND EXCEPT that part of said Section 26 lying within the United States Sugar Corporation Railroad Corridor as described in Official Records Book 23180, page 854, Public Records of Palm Beach County, Florida.

AND:

All that part of Section 27, Township 41 South, Range 38 East, Palm Beach County, Florida lying within the South Florida Water Management District Levee L-8 right-of-way;

LESS AND EXCEPT that part of said Section 27 lying within the United States Sugar Corporation Railroad Corridor as described in Official Records Book 23180, page 854, Public Records of Palm Beach County, Florida.

AND:

All that part of Section 35, Township 41 South, Range 38 East, Palm Beach County, Florida lying within the South Florida Water Management District Levee L-8 right-of-way;

LESS AND EXCEPT that part of said Section 35 lying within the United States Sugar Corporation Railroad Corridor as described in Official Records Book 23180, page 854, Public Records of Palm Beach County, Florida.

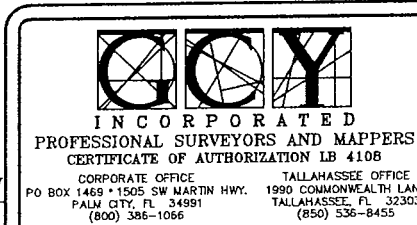
AND:

All that part of Section 36, Township 41 South, Range 38 East, Palm Beach County, Florida lying within the South Florida Water Management District Levee L-8 right-of-way lying South and West of the Southwesterly line of that parcel described in Official Records Book 1971, page 1863 of the Public Records of Palm Beach County, Florida being described therein as the centerline of easement for the South Florida Water Management District (formerly the Central and Southern Florida Flood Control District) Levee L-8;

LESS AND EXCEPT that part of said Section 36 lying within the United States Sugar Corporation Railroad Corridor as described in Official Records Book 23180, page 854, Public Records of Palm Beach County, Florida.

River of Grass Tract C4200-006

1	Removed Clause	9/30/10	MRW
NO.	REVISIONS	DATE	BY



SKETCH OF LEGAL DESCRIPTION FOR;	
S.F.W.M.D.	
PALM BEACH COUNTY, FLORIDA	
Scale:	Date:
NONE	9/29/10
Drawn By:	Checked:
JHY	MRW
File & Drawing No.: 08-1050-05	
Sheet 11 of 14	

Drawing Name: Combined Legal 1_10-14.dwg

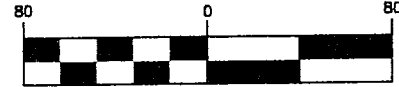
Point Of Beginning

of the LESS & EXCEPT parcel; U.S. General Land Office Pipe marking the Northwest Corner of Section 6, Township 41 South, Range 38 East.

Township 40 South
Township 41 South

North Line of
Section 6

GRAPHIC SCALE



(IN FEET)

INTENDED DISPLAY SCALE

1 inch = 80 ft.

REPLAT TRACTS
OSCEOLA GROVES, INC.
PLAT BOOK 23, PAGE 171

RANGE 37 EAST
R/W LINE

LESS AND EXCEPT PARCEL

RANGE 38 EAST

R/W LINE

NORTH LINE OF L-8
RIGHT-OF-WAY

NORTH LINE
OF SECTION 7

CENTERLINE OF
S.F.W.M.D. L-8
EASEMENT

WEST LINE OF
SECTION 7

S89°47'00"E
50.0'
C4200-006
(PERPENDICULAR TO
THE PREVIOUS CALL
ALONG THE RANGE LINE)

SOUTH LINE OF L-8
RIGHT-OF-WAY

U.S. General Land Office Pipe marking the Southwest
Corner of Township 41 South, Range 38 East.

Township 41 South
Township 42 South

River of Grass Tract C4200-006

See Top Left of Sheet 13



INCORPORATED
PROFESSIONAL SURVEYORS AND MAPPERS
CERTIFICATE OF AUTHORIZATION LB 4108

CORPORATE OFFICE
PO BOX 1469 • 1505 SW MARTIN HWY. TALLAHASSEE OFFICE
PALM CITY, FL 34991 TALLAHASSEE, FL 32303
(800) 386-1066 (850) 536-6455

SKETCH OF LEGAL DESCRIPTION FOR:

S.F.W.M.D.

PALM BEACH COUNTY,

FLORIDA

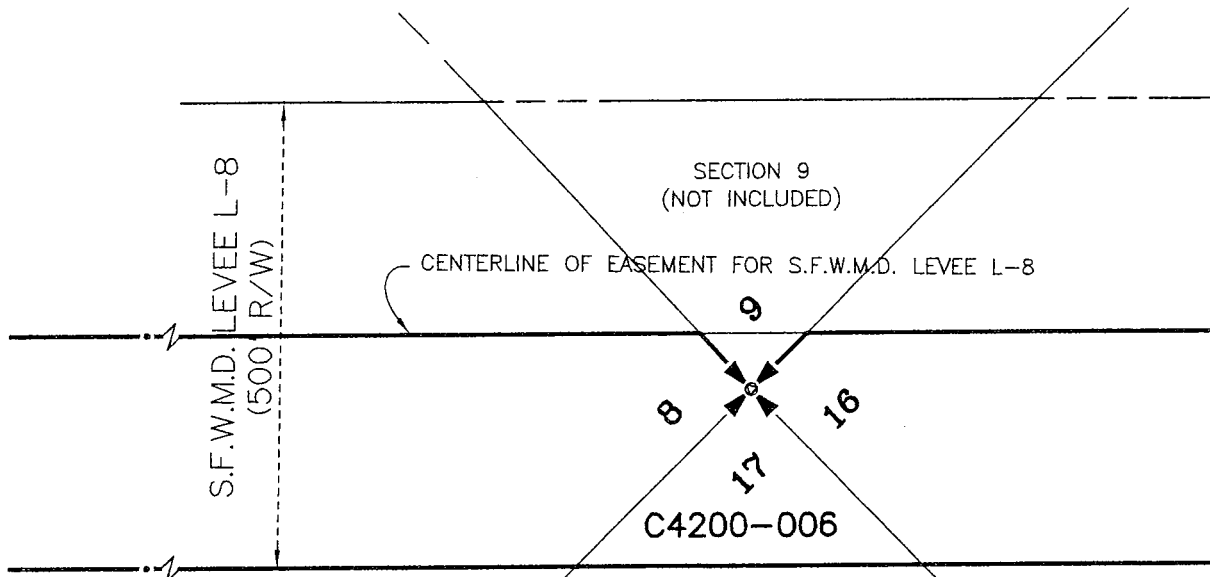
Scale:
1"=80'
Date:
9/29/10
Drawn By:
JHY
Checked:
MRW

File & Drawing No.:
08-1050-05
Sheet
12 OF 14

Drawing Name: Combined Legal 1_10-14.dwg

See Sheet 12

See Below Left



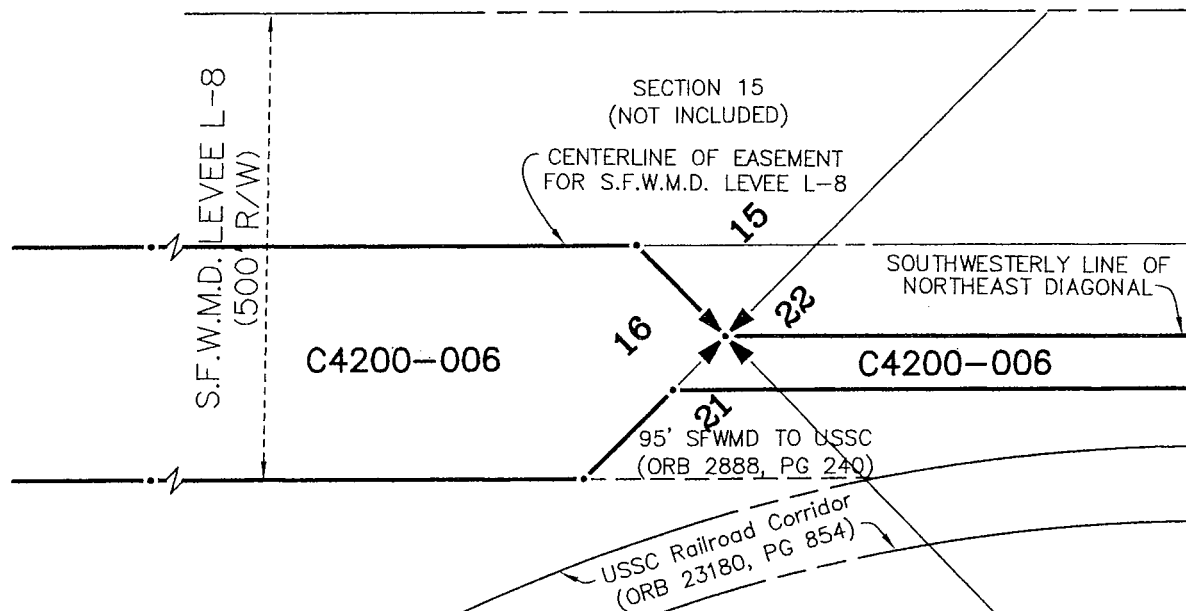
GRAPHIC SCALE



(IN FEET)
INTENDED DISPLAY SCALE
1 inch = 200 ft.

See Above Right

See Top Left of Sheet 14



River of Grass Tract C4200-006



INCORPORATED
PROFESSIONAL SURVEYORS AND MAPPERS
CERTIFICATE OF AUTHORIZATION LB 4108
CORPORATE OFFICE TALLAHASSEE OFFICE
PO BOX 1469 • 1505 SW MARTIN HWY. 1990 COMMONWEALTH LANE
PALM CITY, FL 34991 TALLAHASSEE, FL 32303
(800) 386-1066 (850) 536-8455

SKETCH OF LEGAL DESCRIPTION FOR;

S.F.W.M.D.

PALM BEACH COUNTY,

FLORIDA

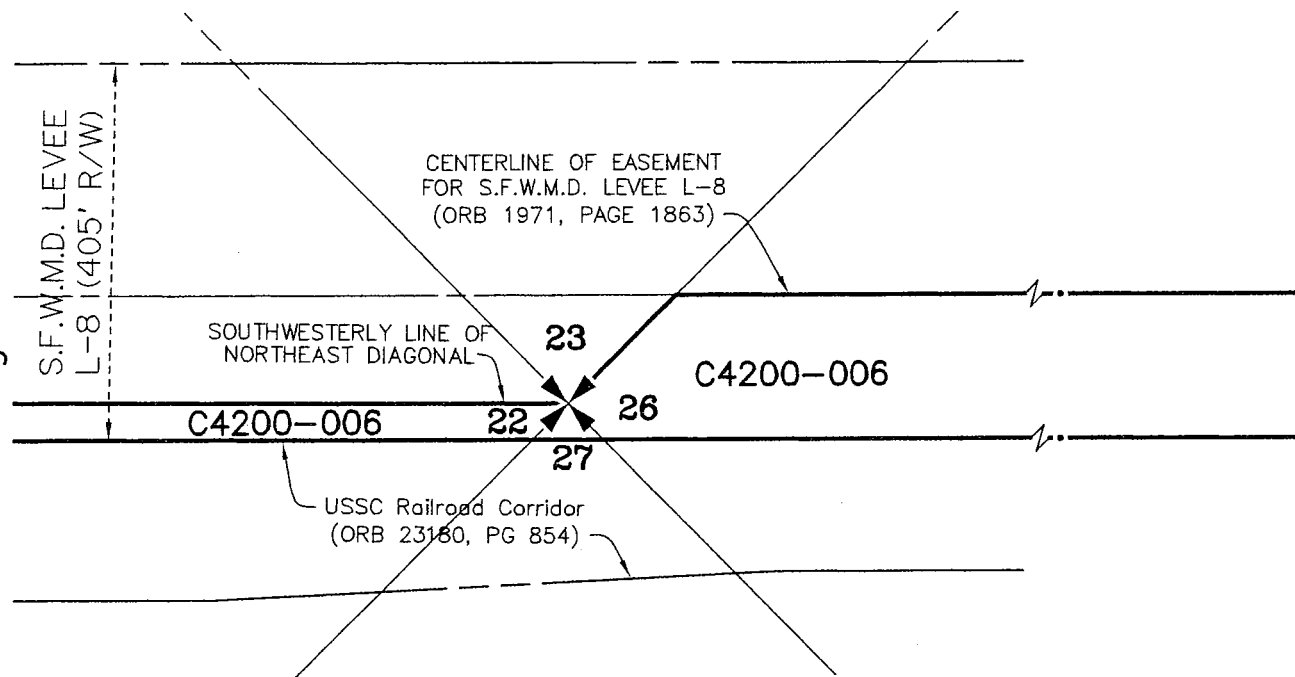
Scale: 1"=200'
Date: 9/29/10
Drawn By: JHY
Checked: MRW

File & Drawing No.: 08-1050-05
Sheet 13 of 14

See Bottom Right of Sheet 13

See Below Left

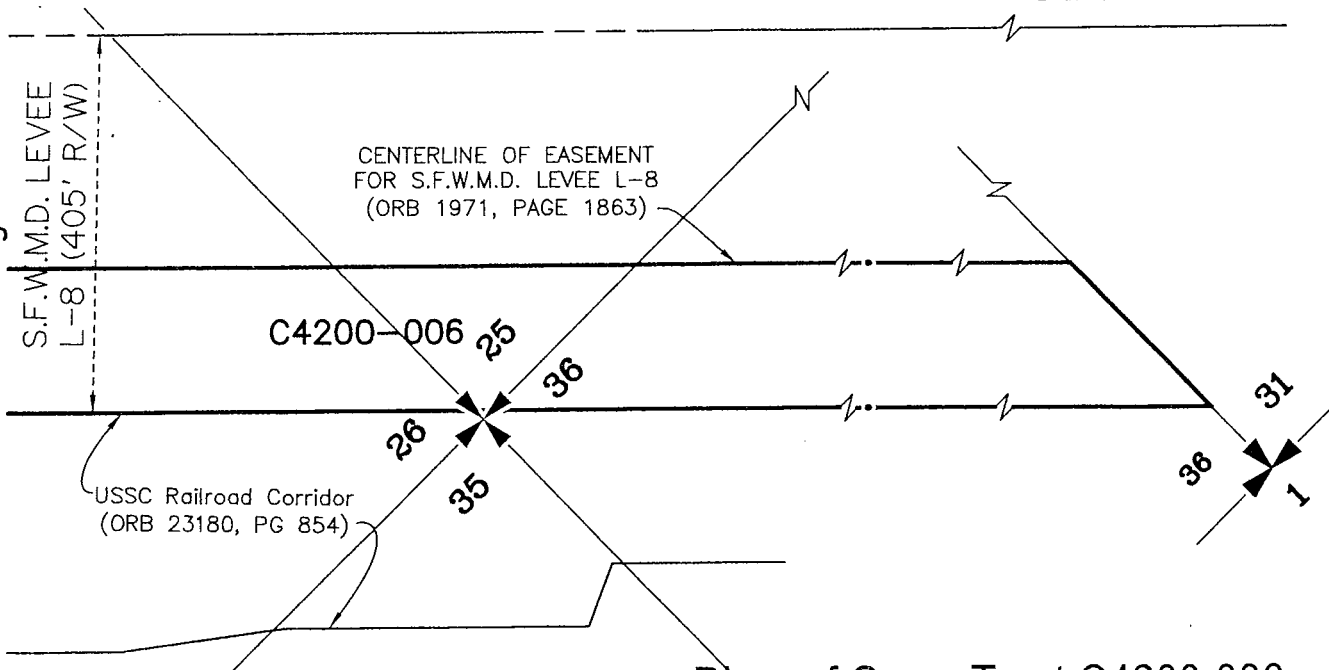
See Above Right



GRAPHIC SCALE



(IN FEET)
INTENDED DISPLAY SCALE
1 inch = 200 ft.



River of Grass Tract C4200-006



INCORPORATED
PROFESSIONAL SURVEYORS AND MAPPERS
CERTIFICATE OF AUTHORIZATION LB 4108
CORPORATE OFFICE TALLAHASSEE OFFICE
PO BOX 1469 • 1505 SW MARTIN HWY. 1990 COMMONWEALTH LANE
PALM CITY, FL 34991 TALLAHASSEE, FL 32303
(800) 386-1066 (850) 536-8455

SKETCH OF LEGAL DESCRIPTION FOR;
S.F.W.M.D.
PALM BEACH COUNTY, FLORIDA

Scale: 1"=200'	Date: 9/29/10	File & Drawing No.: 08-1050-05
Drawn By: JHY	Checked: MRW	Sheet 14 OF 14