

Restoration Strategies Program Update Governing Board – May 2015

Eastern Flow Path

L-8 FEB

- Inflow spillway and outflow pump station under construction
 - Operations permit acquisition in process

L-8 Divide Structure

- In construction

STA-1W Expansion #1

- In intermediate design
- Construction and operations permit acquisition in process

STA-1W Expansion #2

- Proposed Land Exchange Agreement with DOI - Snail Farm parcel (Compartment D) for Strazzulla – on GB agenda for approval to enter into the agreement

S-375 Structure Expansion (G-716)

- In design

S-5AS Divide Structure

- In construction

G-341 Related Improvements

- L-16 Bolles East Canal Phase I - In design

Central Flow Path

A-1 FEB

- In construction

Western Flow Path

Projects to begin in 2019

Additional Components

Science Plan

- Eight STA related research projects on going to improve treatment performance

Sub-Regional Source Control

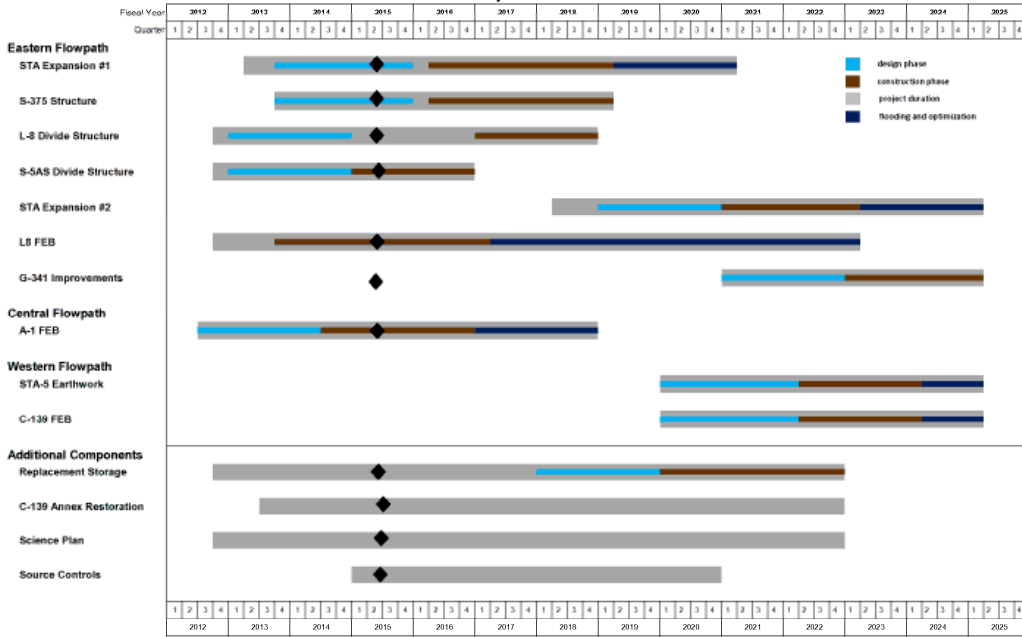
- Project planning for FY15 is ongoing
- Two new source control projects identified

Mecca - Replacement Feature

- In design

For more information go to www.sfwmd.gov/restorationstrategies

Restoration Strategies Regional Water Quality Plan - Program Update
January - March 2015



Restoration Strategies GIS Timeline FY15 Q2.xlsx RS Timeline

1/7/2015 3:07 PM

Eastern Flow Path Milestones				
Project	Deadline	Date submitted	*Days +/-	Status
S-5AS Divide: Initiate Construction	10/1/2014	9/15/2014	+15	
L-8 Divide: Initiate Construction	10/1/2016	9/15/2014	+745	
L-8 FEB: Construction Status Report	3/1/2015	2/26/2015	+2	
S-375 Structure Expansion: Complete Design	7/30/2015			
STA-1W Expansion #1: Complete Design of STA	7/30/2015			

Central Flow Path Milestones				
Project	Deadline	Date submitted	*Days +/-	Status
A-1 FEB: Construction Status Report	3/1/2015	2/26/15	+2	

Western Flow Path Milestones				
Project	Deadline	Date submitted	*Days +/-	Status
Projects to begin in 2019				

* + = days ahead; - = days behind