

## Restoration Strategies Program Update Governing Board – March 2015

### Eastern Flow Path

#### L-8 FEB

- Submitted Consent Order Milestone – Construction Status Report

#### L-8 Divide Structure

- In construction

#### STA-1W Expansion #1

- In intermediate design

- Construction and Operations Permit Acquisition in process

#### STA-1W Expansion #2

- Land Exchange Agreement with DOI - Snail Farm parcel (Compartment D) for Strazulla – on GB agenda for approval to enter into the agreement

#### S-375 Structure Expansion (G-716)

- In design

#### S-5AS Divide Structure

- In construction

#### G-341 Related Improvements (L-16 Bolles Canal)

- In design

### Central Flow Path

#### A-1 FEB

- In construction

- Submitted Consent Order Milestone – Construction Status Report

### Western Flow Path

Projects to begin in 2019

### Additional Components

#### Science Plan

- Initial eight projects in implementation

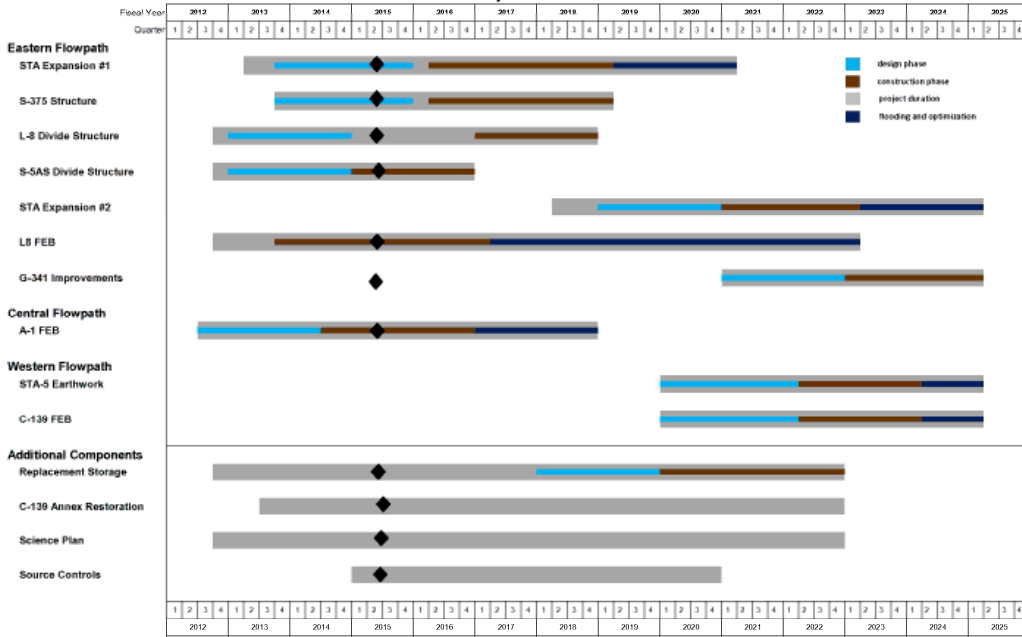
#### Sub-Regional Source Control

- Project planning for FY15 is underway

#### Mecca - Replacement Feature

- In design

Restoration Strategies Regional Water Quality Plan - Program Update  
January - March 2015



Restoration Strategies GIS Timeline FY15 Q2.xlsx RS Timeline

1/7/2015 3:07 PM

| Eastern Flow Path Milestones                |           |                |           |        |
|---|-----------|----------------|-----------|--------|
| Project                                     | Deadline  | Date submitted | *Days +/- | Status |
| S-5AS Divide: Initiate Construction         | 10/1/2014 | 9/15/2014      | +15       |        |
| L-8 Divide: Initiate Construction           | 10/1/2016 | 9/15/2014      | +745      |        |
| L-8 FEB: Construction Status Report         | 3/1/2015  | 2/26/2015      | +2        |        |
| S-375 Structure Expansion: Complete Design  | 7/30/2015 |                |           |        |
| STA-1W Expansion #1: Complete Design of STA | 7/30/2015 |                |           |        |

| Central Flow Path Milestones        |          |                |           |        |
|-------------------------------------|----------|----------------|-----------|--------|
| Project                             | Deadline | Date submitted | *Days +/- | Status |
| A-1 FEB: Construction Status Report | 3/1/2015 | 2/26/15        | +2        |        |

| Western Flow Path Milestones |          |                |           |        |
|------------------------------|----------|----------------|-----------|--------|
| Project                      | Deadline | Date submitted | *Days +/- | Status |
| Projects to begin in 2019    |          |                |           |        |

\* + = days ahead; - = days behind