

Restoration Strategies Program Update Governing Board – February 2015

Eastern Flow Path

L-8 FEB

- Dewatering and construction of inflow works and outflow pump station ongoing
 - Operations permit in process

L-8 Divide Structure

- In construction
- Operations permit in process

STA-1W Expansion #1

- In design
- Permit Acquisition in process

S-375 Structure Expansion (G-716)

- In design

S-5AS Divide Structure

- In construction

G-341 Related Improvements (L-16 Bolles Canal)

- In design

Central Flow Path

A-1 FEB

- In construction

Western Flow Path

Projects to begin in 2019

Additional Components

Science Plan

- Initial eight projects in implementation

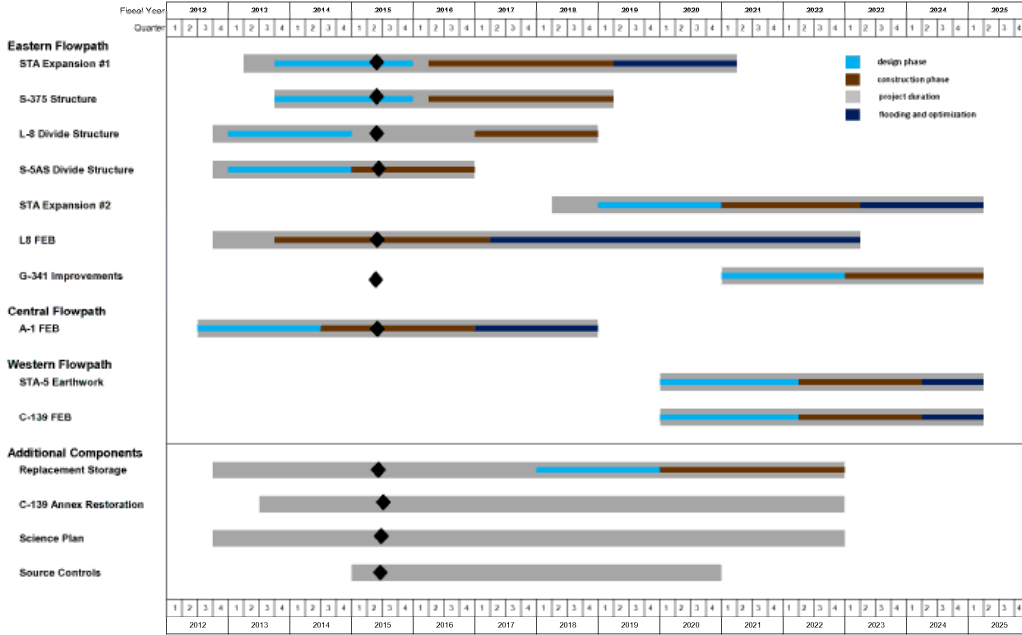
Sub-Regional Source Control

- Project planning for FY15 is underway

Mecca - Replacement Feature

- In design

Restoration Strategies Regional Water Quality Plan - Program Update
January - March 2015



Restoration Strategies GIS Timeline FY15 Q2.xlsx RS Timeline

1/7/2015 3:07 PM

Eastern Flow Path Milestones				
Project	Deadline	Date submitted	*Days +/-	Status
S-5AS Divide: Initiate Construction	10/1/2014	9/15/2014	+15	
L-8 Divide: Initiate Construction	10/1/2016	9/15/2014	+745	
L-8 FEB: Construction Status Report	3/1/2015			
S-375 Structure Expansion: Complete Design	7/30/2015			
STA-1W Expansion #1: Complete Design of STA	7/30/2015			

Central Flow Path Milestones				
Project	Deadline	Date submitted	*Days +/-	Status
A-1 FEB: Construction Status Report	3/1/2015			

Western Flow Path Milestones				
Project	Deadline	Date submitted	*Days +/-	Status
Projects to begin in 2019				

* + = days ahead; - = days behind