

Restoration Strategies Program Update Governing Board – August 2015

Eastern Flow Path

L-8 FEB

Inflow spillway and outflow pump station in construction, nearing completion

Contractor to start filling the FEB

L-8 Divide Structure

In construction

STA-1W Expansion #1

Final design completed

Construction and operations permit acquisition in process

S-375 Structure Expansion (G-716)

Final design completed

S-5AS Divide Structure

In construction

G-341 Related Improvements

L-16 Bolles East Canal Phase 1 Segment 1 - In design

Central Flow Path

A-1 FEB

Construction substantially complete, currently conducting final structure inspections

Western Flow Path

Projects to begin in 2018

Additional Components

Science Plan

Eight STA related research projects on going to improve treatment performance

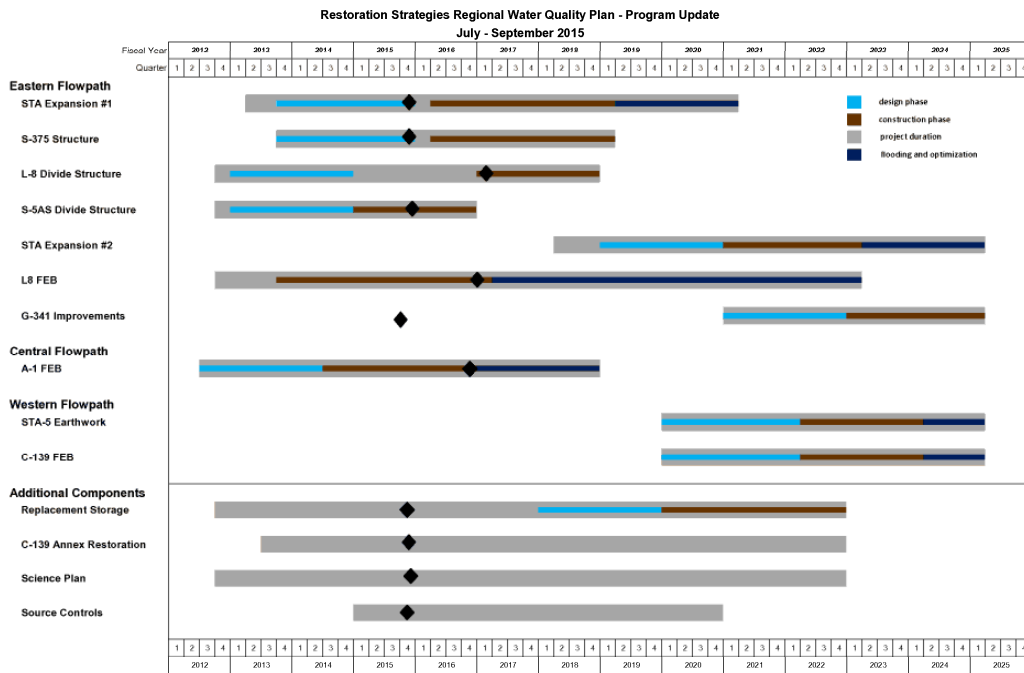
Sub-Regional Source Control

Project planning for FY15 is ongoing

Two new source control projects are underway

Mecca - Replacement Feature

In design



Restoration Strategies G01 Timeline FY15 Q4.xlsx RS Timeline

7/23/2015 9:08 AM

Eastern Flow Path Milestones				
Project	Deadline	Date submitted	*Days +/-	Status
S-5AS Divide: Initiate Construction	10/1/2014	9/15/2014	+15	
L-8 Divide: Initiate Construction	10/1/2016	9/15/2014	+745	
L-8 FEB: Construction Status Report	3/1/2015	2/26/2015	+2	
S-375 Structure Expansion: Complete Design	7/30/2015	7/22/2015	+8	
STA-1W Expansion #1: Complete Design of STA	7/30/2015	6/22/2015	+37	

Central Flow Path Milestones				
Project	Deadline	Date submitted	*Days +/-	Status
A-1 FEB: Construction Status Report	3/1/2015	2/26/15	+2	

Western Flow Path Milestones				
Project	Deadline	Date submitted	*Days +/-	Status
Projects to begin in 2019				

* + = days ahead; - = days behind

For more information go to www.sfwmd.gov/restorationstrategies