

Restoration Strategies Program Update Governing Board – January 2014

Eastern Flow Path

L-8 FEB

- Inflow structure and pump station construction underway

L-8 Divide Structure

- 30% Design complete, moving to 100% design
- Concurrent Federal 408 review ongoing

STA-1W Expansion #1

- Phase I/Phase II environmental assessment complete
 - Conceptual design is underway

S-375 Structure Expansion (G-716)

- 30% design complete

S-5AS Divide Structure

- Design is ongoing

Central Flow Path

A-1 FEB

- Construction has initiated
- Project groundbreaking scheduled for January 16

Western Flow Path

Projects to begin in 2019

Additional Components

Science Plan

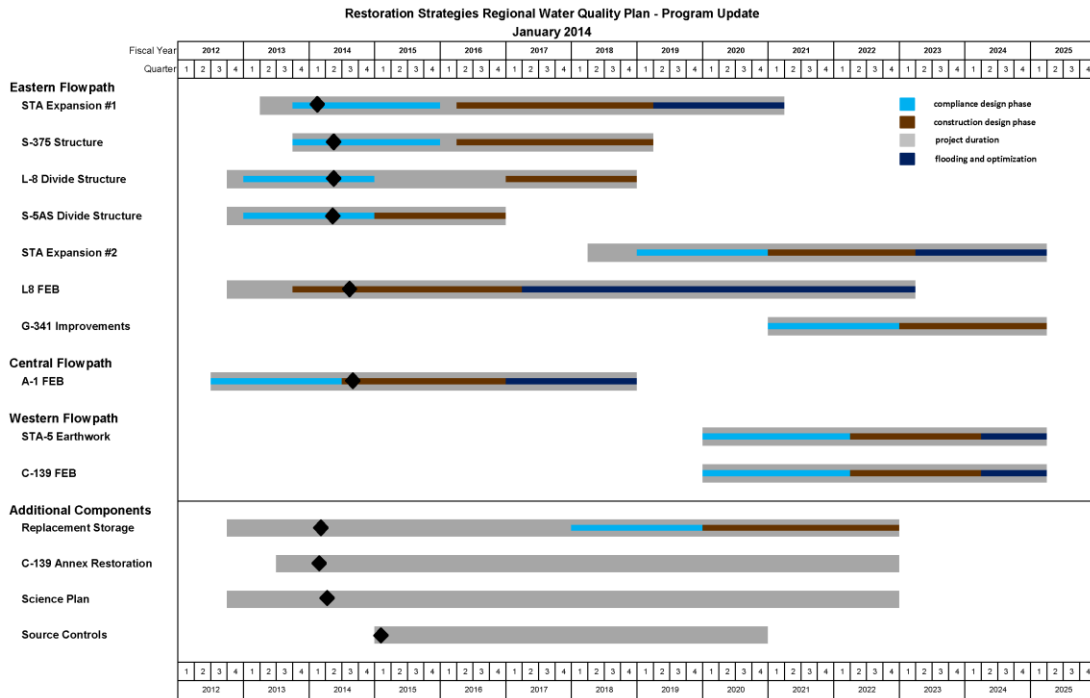
- RFP for environmental technical services released on December 10, 2013
 - RFP for university services released on January 6, 2014

Sub-Regional Source Control

- Early start on two projects
- Conceptual project planning for FY15 is underway

Replacement Feature

- Closing on Mecca Parcel complete on December 16, 2013



Restoration Strategies GB Im inline FY14 Q2.xlsx R5 Timeline

12/13/2013 11:41 AM

Eastern Flow Path Milestones				
Project	Deadline	Date met	*Days +/-	Status
STA-1W exp #1: Land Acquisition	9/30/2013	In process		
L-8 FEB: Construction status report	3/1/2014			
STA-1W exp #1: Submit permit applications	7/30/2014			
L-8 Divide: Complete design	9/30/2014			
S-5AS Divide: Complete design	9/30/2014			

Central Flow Path Milestones				
Project	Deadline	Date met	*Days +/-	Status
A-1 FEB: Initiate construction	6/30/2014	10/10/2013	+263	

Western Flow Path Milestones				
Project	Deadline	Date met	*Days +/-	Status
Project to begin in 2019				

* + = days ahead; - = days behind

For more information go to www.sfwmd.gov/restorationstrategies