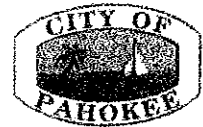


# City of Pahokee



CITY HALL • 171 N. LAKE AVENUE • PAHOKEE, FLORIDA 33476 • PHONE (561) 924-5534 • FAX (561) 924-7301

July 29, 2008

Wayne Whitaker  
Mayor

Federal, State, County and Local Officials:

Keith W. Babb, Jr.  
Vice Mayor

Re: Land Apportionment to the City of Pahokee

Allie Biggs  
Commissioner

Thank you for your recent offer to assist the City of Pahokee. It is very nice of you to take time from your busy schedule to spend a few minutes to discuss this matter further with me.

Henry Crawford Jr.  
Commissioner

Diane Walker  
Commissioner

The City of Pahokee is a small community located in Palm Beach County, Florida on the eastern shore of Lake Okeechobee. Pahokee is within the Glades Region of Palm Beach County characterized by extensive agricultural uses, mainly sugar cane, as you know.

Matthew Brock  
City Manager

Raquel Diaz  
City Clerk

Population and economic growth in the Glades Region has been relatively modest in the past 20 years. During the same period the county, as a whole, has experienced considerable growth in its coastal and central portions. As a result, the agricultural economy of the Glades Region and its population of large land holders and farm workers presents a significant contrast with the much more diversified economy of the county as a whole.

Walton Lantaff et al  
City Attorney

Art Cobb, Jr.  
Public Services  
Director

Herbert Crawford  
Parks & Recreation  
Director

Much discussion has taken place regarding the economic impact on surrounding communities of the recent purchase of US Sugar by South Florida Water Management District.

Art Ivester  
Port Mayaca  
Memorial Gardens  
Director

It is critical to the long term financial health of the City of Pahokee that the land surrounding Pahokee (see attachment 1) be deeded to the City. Doing so will provide the opportunity for the City of Pahokee to grow and prosper economically, through job enhancement, industry, housing and increased tax base.

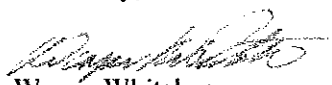
Derrek Moore  
Finance Director

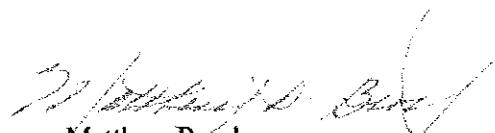
Ted Roberts  
Community  
Development  
Director

A second project now receiving much recent thought and discussion is the proposed Inland Port. Initial estimates indicate jobs in excess of several thousand. The City of Pahokee has a high rate of unemployment which could be addressed by location of this facility nearby.

In summary, we believe these two issues to be vital to the long term stability and the financial health of the City of Pahokee. The City would be most grateful and indebted to you for any assistance that you or your office might be able to provide.

Sincerely,

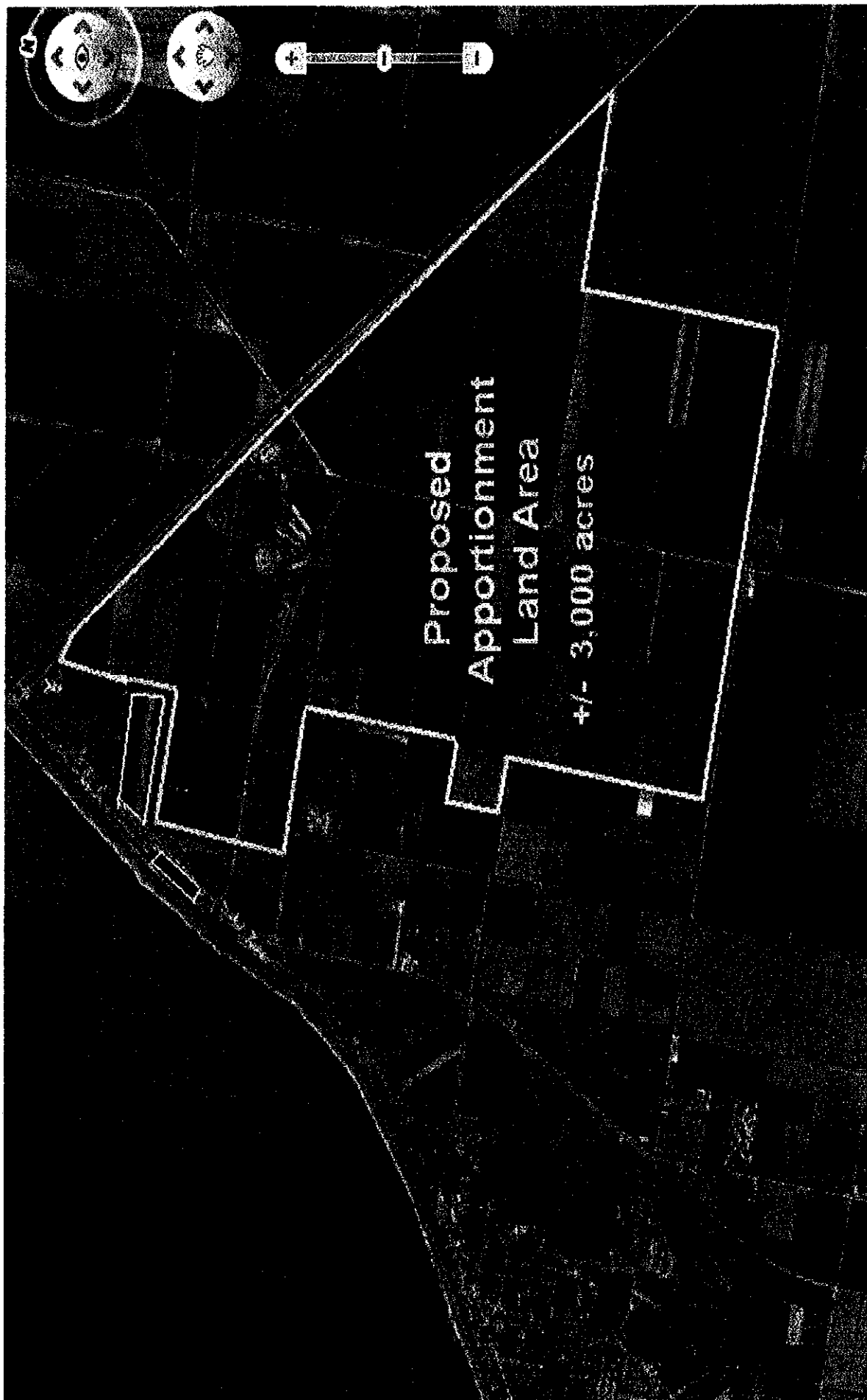
  
Wayne Whitaker  
Mayor, City of Pahokee

  
Matthew Brock  
City Manager, City of Pahokee

5

1

1



**Proposed Land Apportionment to the City of Pahokee**

RESOLUTION 2008-61

**A RESOLUTION OF THE CITY COMMISSION OF THE CITY OF PAHOKEE, FLORIDA, SUPPORTING THE ACQUISITION OF 10,000 ACRES OF U.S. SUGAR LAND ON THE OUTSKIRTS OF PAHOKEE.**

**WHEREAS**, U.S. Sugar has announced that it intends to sell all of its land to the State of Florida, and to cease operations within the next six years; and

**WHEREAS**, the closure of U.S. Sugar could have a devastating impact on the economic condition of Pahokee and the surrounding Glades area; and

**WHEREAS**, the City of Pahokee needs to grow and prosper economically, through job enhancement, industry, housing and an increased tax base; and

**WHEREAS**, it has been historically difficult to acquire any of the surrounding farmland for the City's future growth; and

**WHEREAS**, it is critical to the long term financial health of the City of Pahokee that some of the U.S. Sugar land be deeded to the City.

**THEREFORE, IT IS HEREBY RESOLVED BY THE CITY COMMISSION OF THE CITY OF PAHOKEE, FLORIDA, THAT:**

*Section 1.* The City Commission of the City of Pahokee hereby supports the acquisition of 10,000 acres of U.S. Sugar land for the City of Pahokee.

*Section 2.* The Mayor is hereby authorized and directed to lobby the State, the South Florida Water Management District, Palm Beach County and all other relevant government agencies for the purpose of acquiring approximately 3,000 acres of U.S. Sugar land surrounding the City of Pahokee.

**PASSED AND ADOPTED** by the City Commission during the regular meeting on 12th of August, 2008.

  
ATTESTED: RAQUEL DIAZ, CITY CLERK

  
WAYNE WHITAKER, MAYOR

MAYOR WHITAKER yes  
VICE MAYOR BABB yes  
COMMISSIONER CRAWFORD yes  
COMMISSIONER BIGGS yes  
COMMISSIONER WALKER yes

APPROVED AS TO LEGAL SUFFICIENCY

  
MIMI K. MCANDREWS, CITY ATTORNEY

RESOLUTION 2008-62

**A RESOLUTION OF THE CITY COMMISSION OF THE CITY OF PAHOKEE, FLORIDA, SUPPORTING THE LOCATION OF THE INLAND PORT IN THE GLADES AREA.**

**WHEREAS**, U.S. Sugar has announced that it intends to cease operations within the next six years; and

**WHEREAS**, the closure of U.S. Sugar could have a devastating impact on the economic condition of Pahokee and the surrounding Glades area; and

**WHEREAS**, the entire Glades area is in desperate need of economic growth and sustainability; and

**WHEREAS**, the Inland Port is critical to the long term financial health of the City of Pahokee and the entire Glades area.

**THEREFORE, IT IS HEREBY RESOLVED BY THE CITY COMMISSION OF THE CITY OF PAHOKEE, FLORIDA, THAT:**


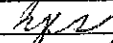
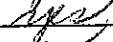
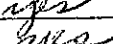
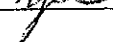
*Section 1.* The City Commission of the City of Pahokee hereby pledges its support for the Inland Port to be located in the Glades area.

*Section 2.* The Mayor is hereby authorized and directed to lobby the State, the South Florida Water Management District, Palm Beach County and all other relevant government agencies for the purpose of locating the Inland Port in the Glades area..

**PASSED AND ADOPTED** by the City Commission during the regular meeting on the 12th of August, 2008.

  
WAYNE WHITAKER, MAYOR

  
ATTESTED: RAQUEL DIAZ, CITY CLERK

MAYOR WHITAKER   
VICE MAYOR BABB   
COMMISSIONER CRAWFORD   
COMMISSIONER BIGGS   
COMMISSIONER WALKER 

APPROVED AS TO LEGAL SUFFICIENCY

  
MIMI K. MCANDREWS, CITY ATTORNEY