



LAKE OKEECHOBEE WATERSHED RESTORATION PROJECT

Landowner Question and Answer Forum

South Florida Water Management District

October 6, 2017

Meeting Agenda

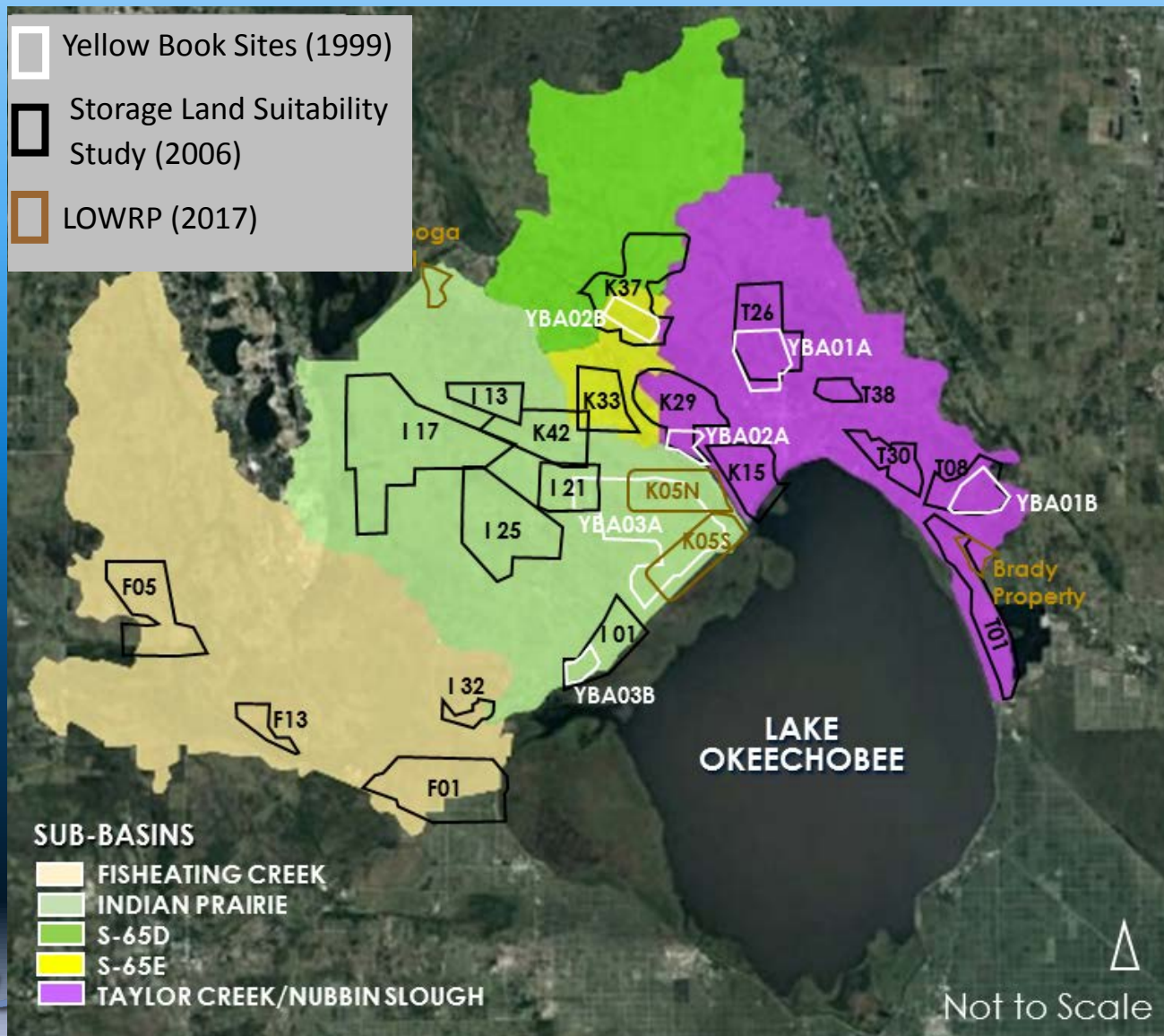
- Opening Remarks – Brandon Tucker
- Project Overview – Jennifer Leeds
- Federal Planning Process and Timeline – Matt Morrison
- Real Estate Acquisition Process – Ray Palmer and Marcy Zehnder
- Adjourn – Brandon Tucker



Project Overview

Jennifer Leeds, Restoration Planning
and Coordination Unit

Reservoir Locations Considered 1999-2017



Lake Okeechobee Watershed Restoration Project

Goals & Objectives:

- Increase water storage capacity in the watershed, resulting in improved Lake Okeechobee water levels
- Improve the quantity and timing of discharges to the St. Lucie and Caloosahatchee estuaries
- Restore wetlands
- Improve water supply

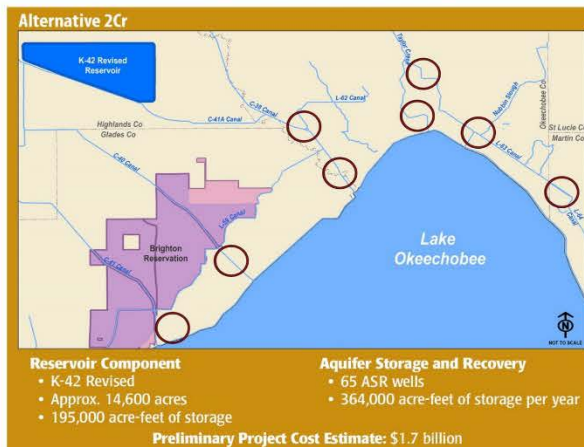
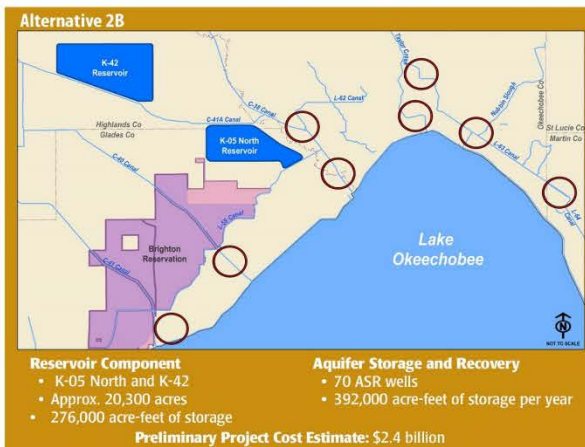
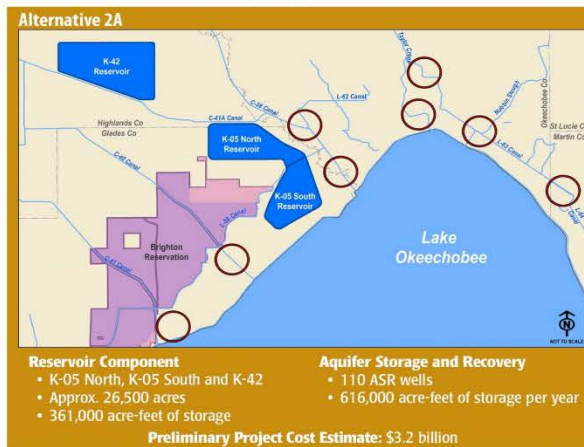
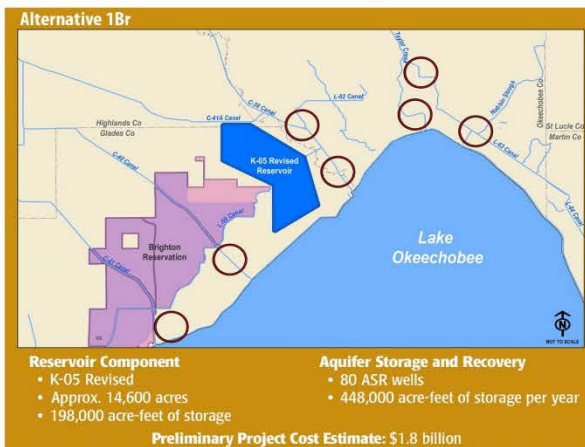


Project Planning Boundary

LEGEND

- Reservoir
- Wetland
- Tribal Trust Lands
- Tribal Owned Lands
- ASR Well Cluster

Final Array of Alternatives Above-ground Reservoirs and Aquifer Storage and Recovery (ASR) Wells



Tentatively Selected Wetland Restoration Sites



- Goals and Objectives:**
- Improve hydrology of impacted wetlands
 - Enhance historic floodplains

- Preliminary Project Acreages and Cost Estimates:**
- Kissimmee River Center: Approx. 1,200 acres, \$24 million
 - Paradise Run: Approx. 4,100 acres, \$85 million

The Lake Okeechobee Watershed Restoration Project is part of the Comprehensive Everglades Restoration Plan (CERP) being conducted by the U.S. Army Corps of Engineers and the South Florida Water Management District.

Reservoir, ASR and wetland locations are currently under evaluation and are subject to further refinement based on cost-benefit analysis.



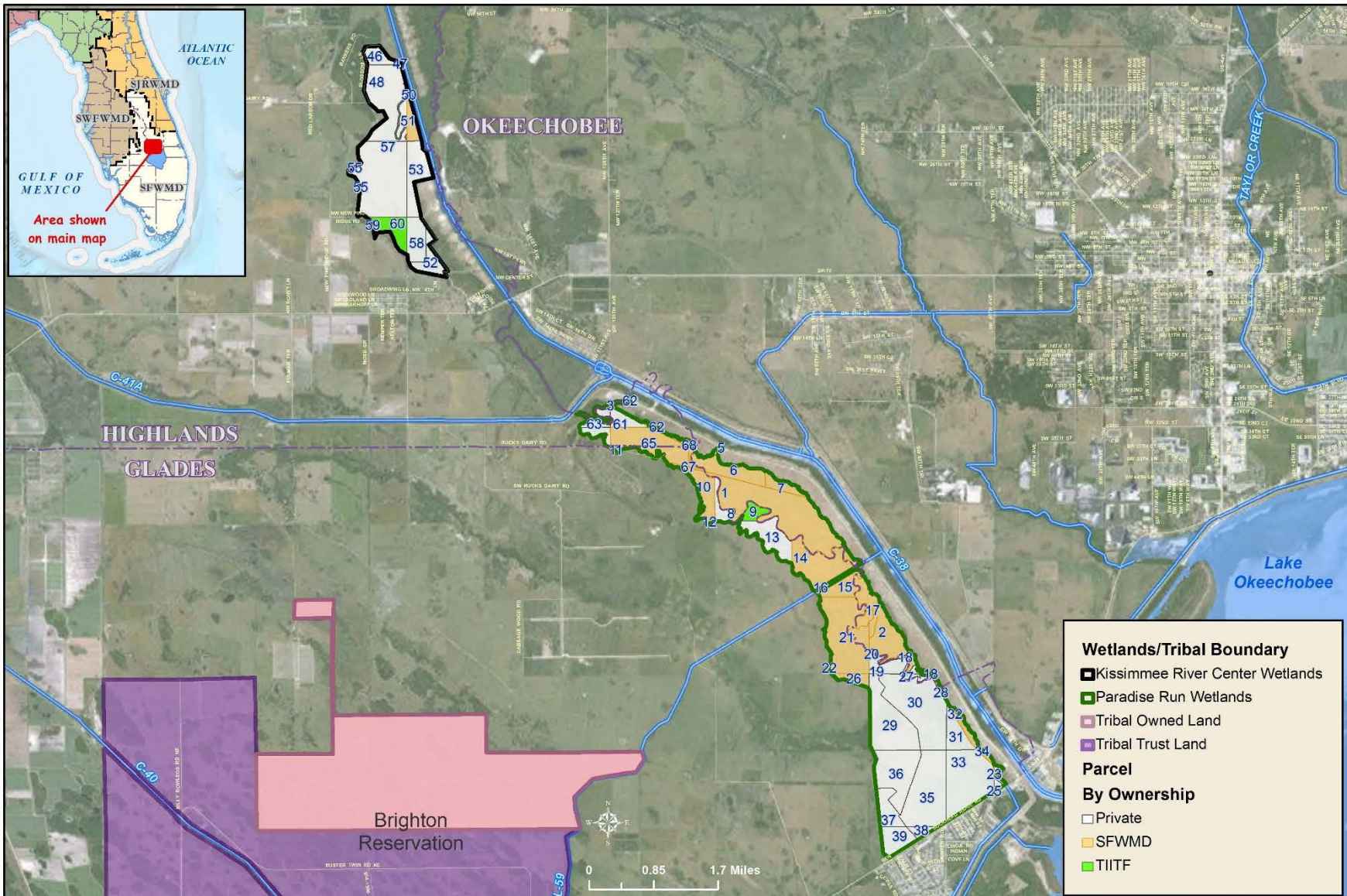
www.saj.usace.army.mil



sfwmd.gov

www.sfwmd.gov/LOWRP

Tentatively Selected Wetland Areas Parcel Map



Wetland Restoration Example

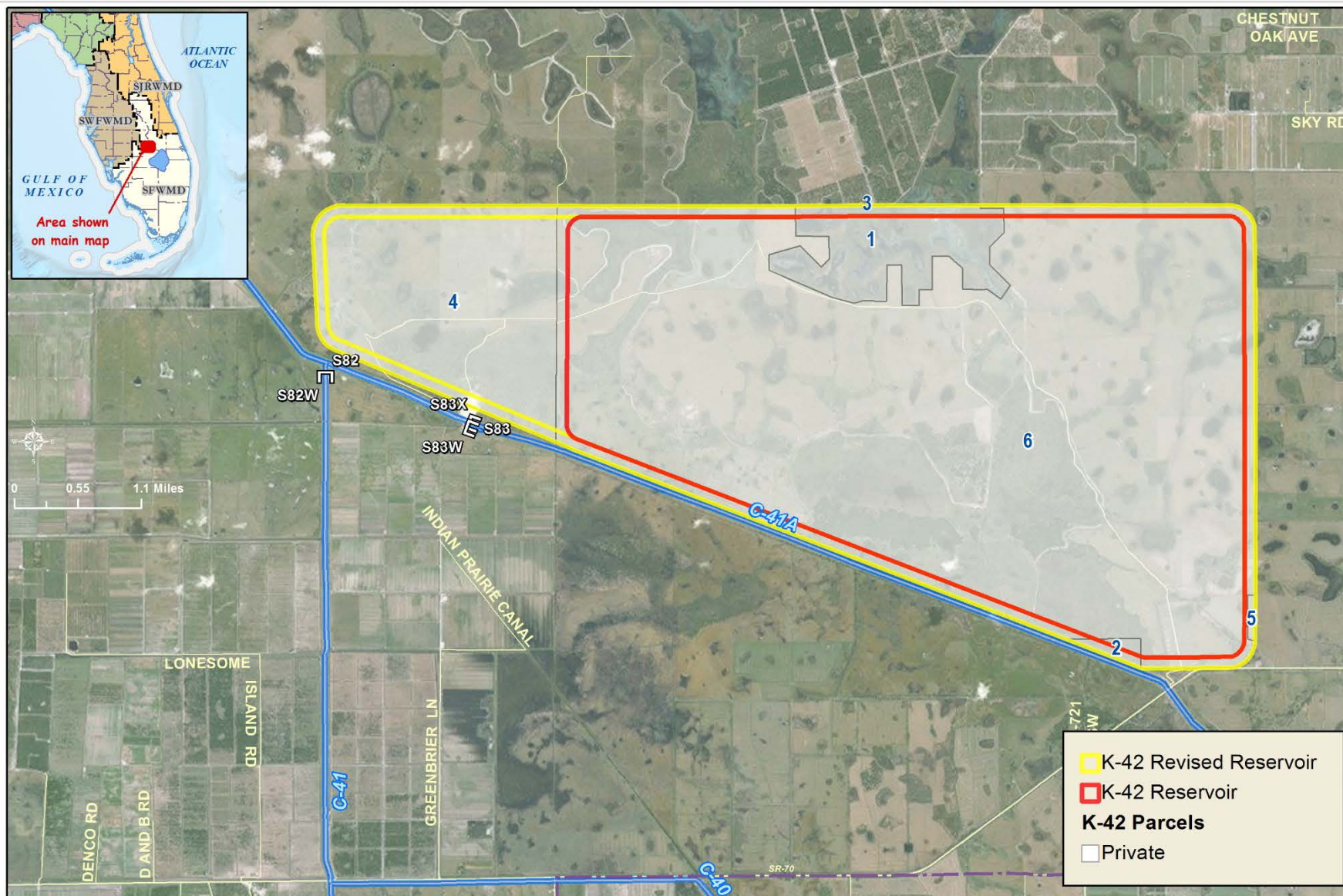


Pre-restoration

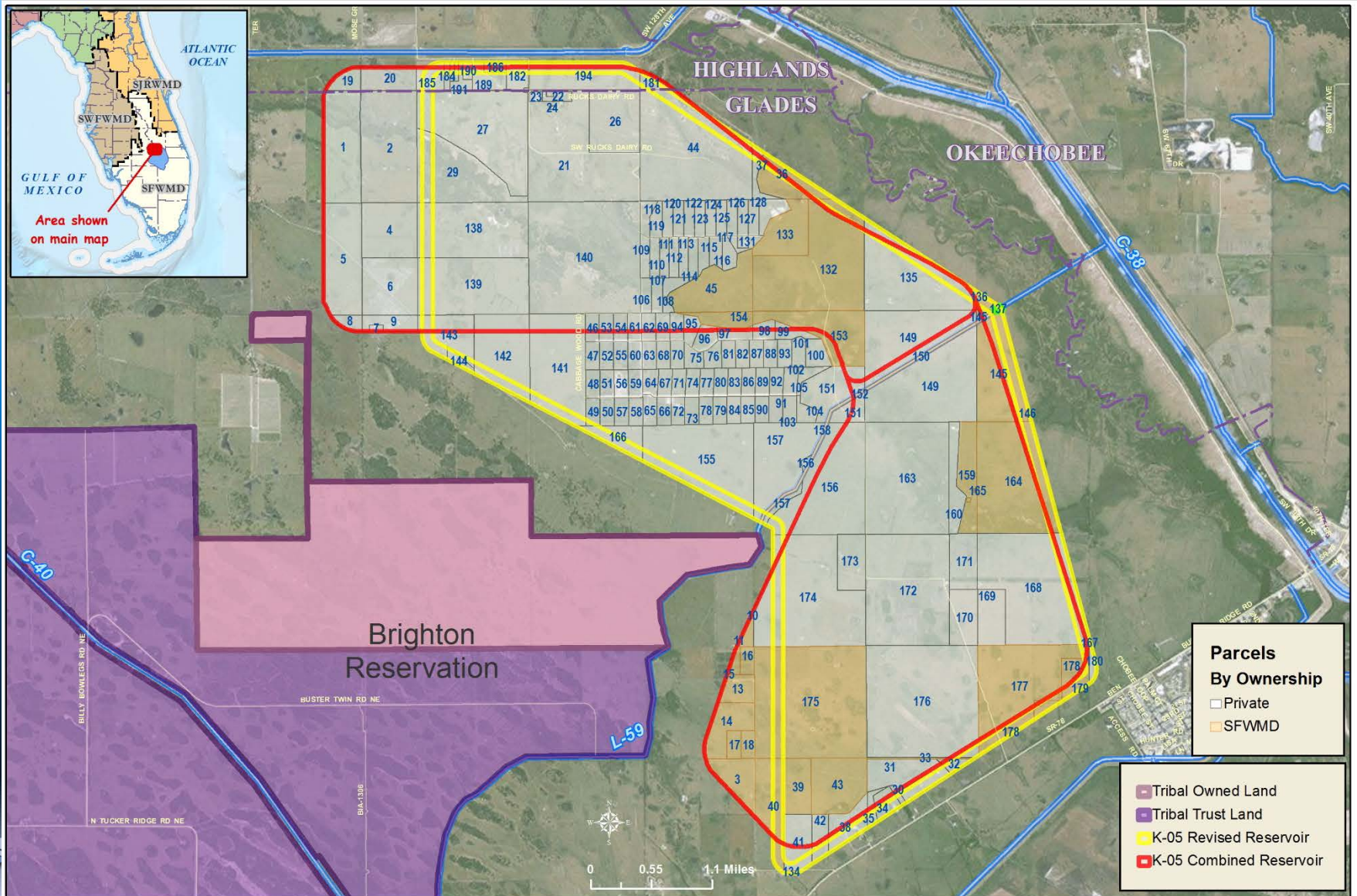


Post-restoration

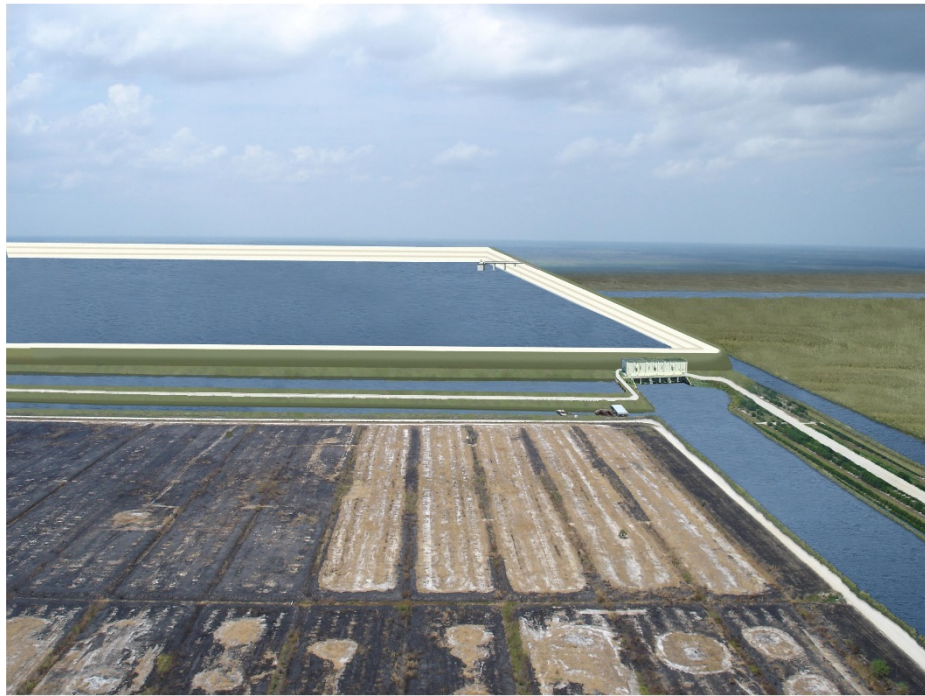
K-42 Reservoir Parcel Map



K-05 Reservoir Parcel Map



Typical Above-Ground Reservoir



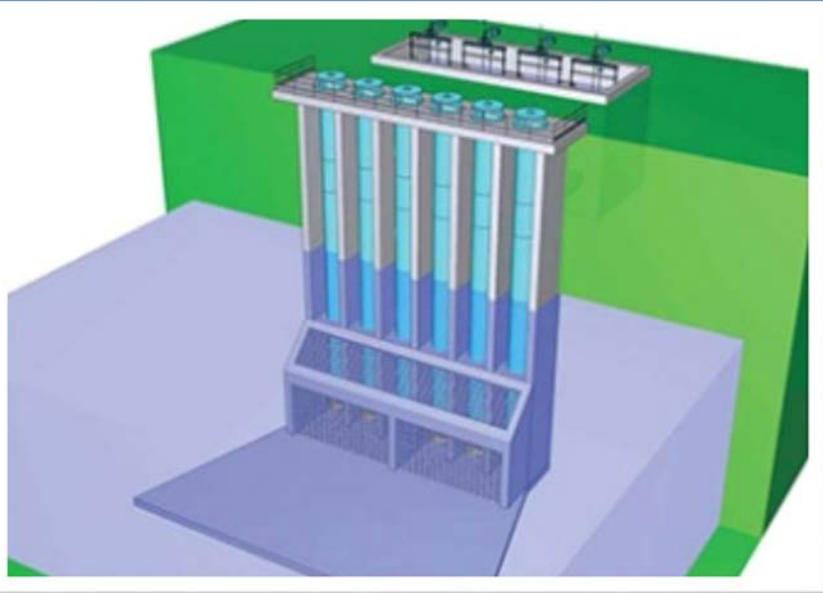
Example of an Earthen- grassed Embankment



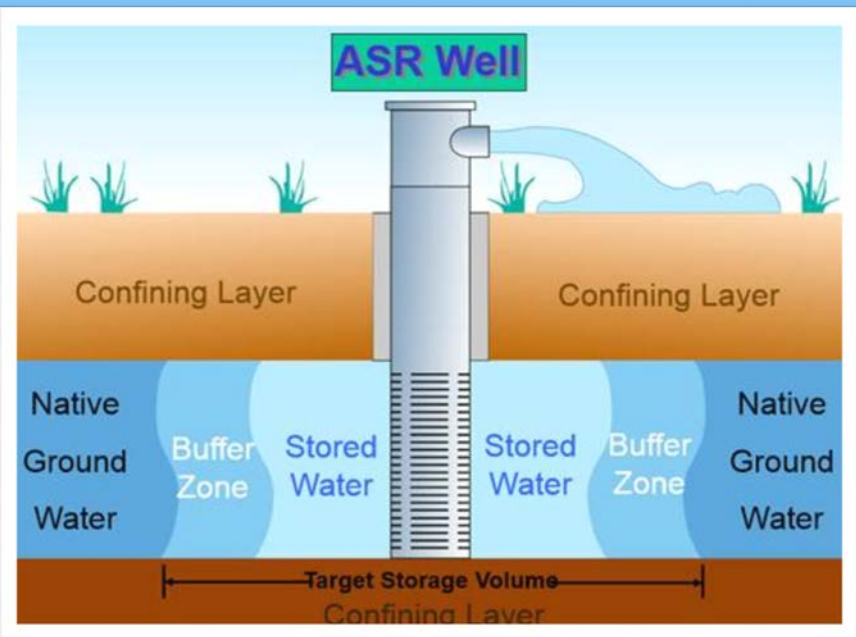
Example of an Earthen- grassed Embankment



Pump Station Example



Aquifer Storage & Recovery Well Example





Lake Okeechobee

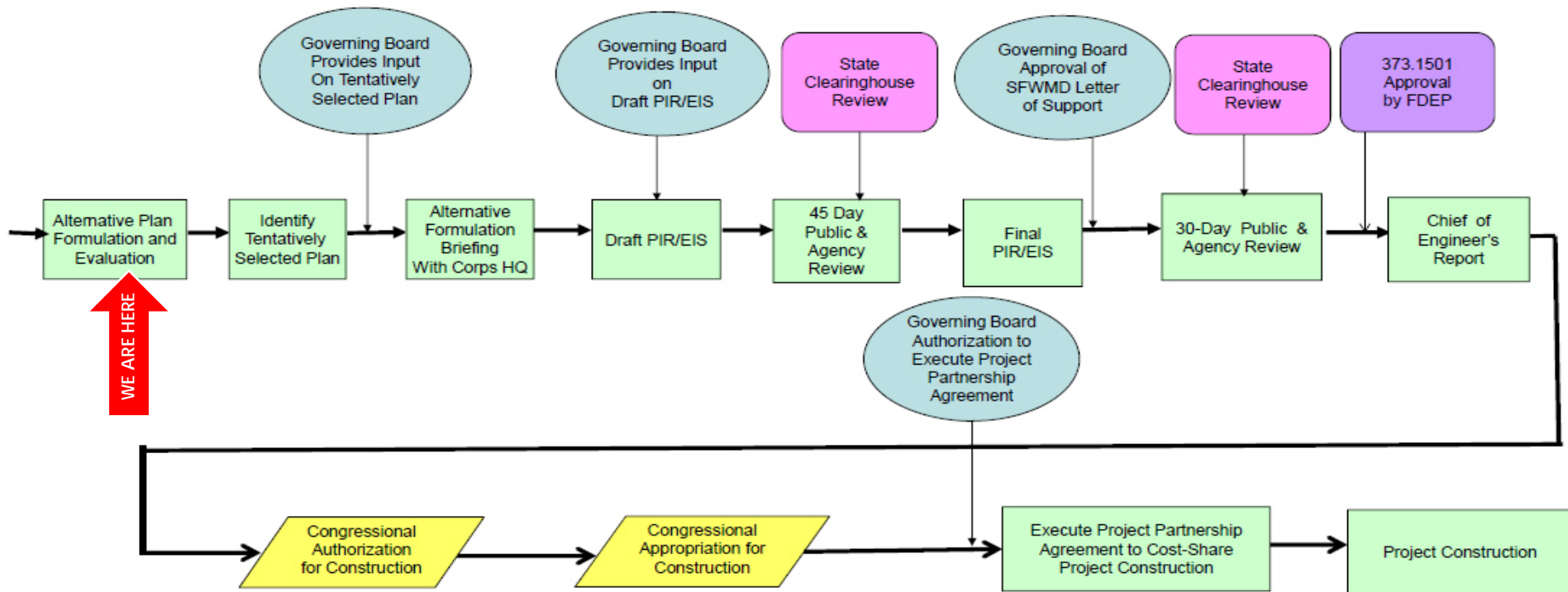
Questions?



Federal Planning Process and Timeline

Matt Morrison, Federal Policy
and Coordination

State Input and Decision Points During Corps Project Implementation Process





Lake Okeechobee

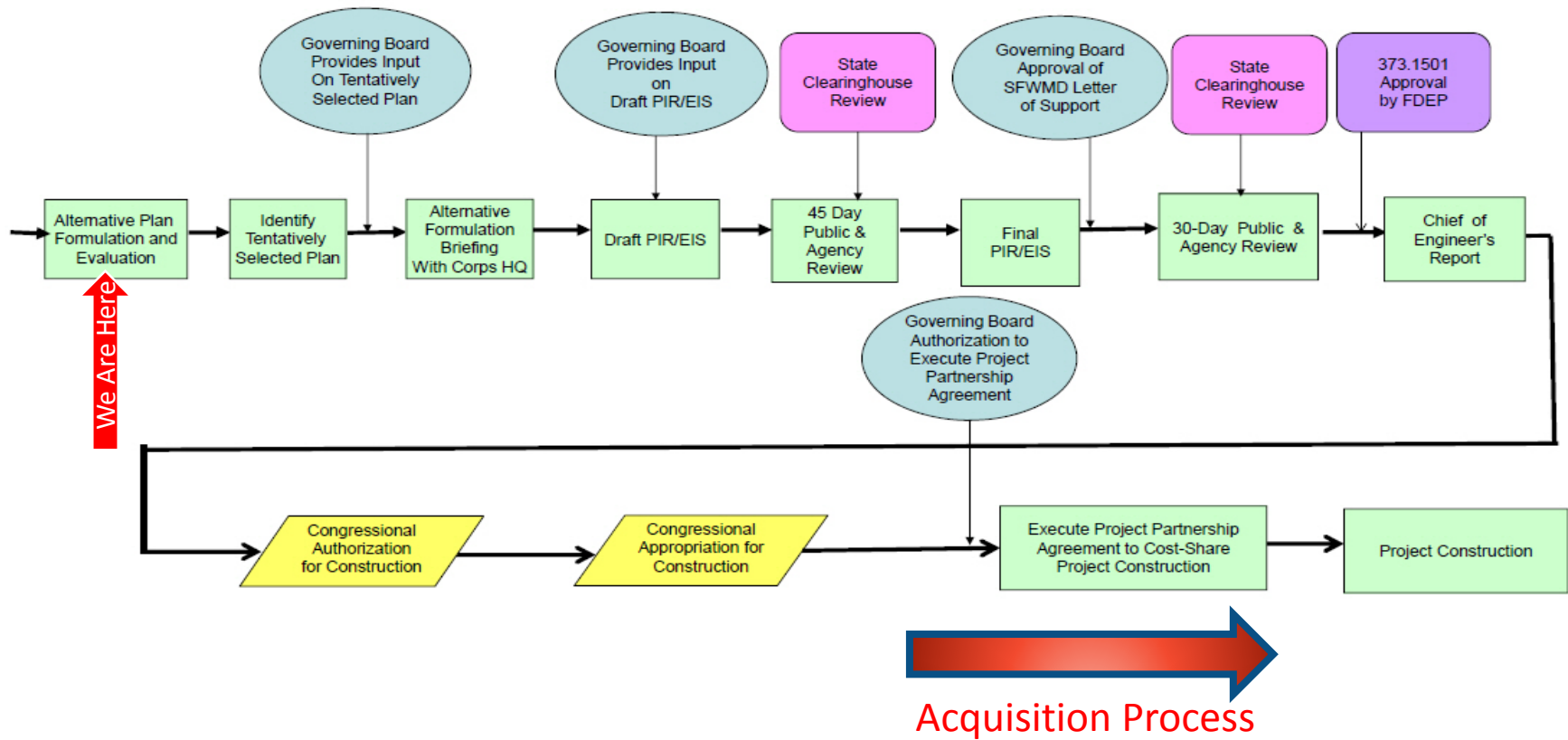
Questions?



Real Estate Acquisition Process

Ray Palmer and Marcy Zehnder, Real Estate

Real Estate Acquisition Process



Real Estate Acquisition Process

- Identify parcels
- Conduct title searches
- Prepare sketches and legal description
- Written Notice to Owners

Real Estate Acquisition Process

- Order appraisals
- Seek Governing Board approval
- Make written offers to acquire land
- Follow up discussions
- Purchase Agreement and Closing



Questions?

www.sfwmd.gov/lowrp