



Changes Since 2005-2006 Lower East Coast Update

Mark Elsner, P.E.

Water Supply Planning

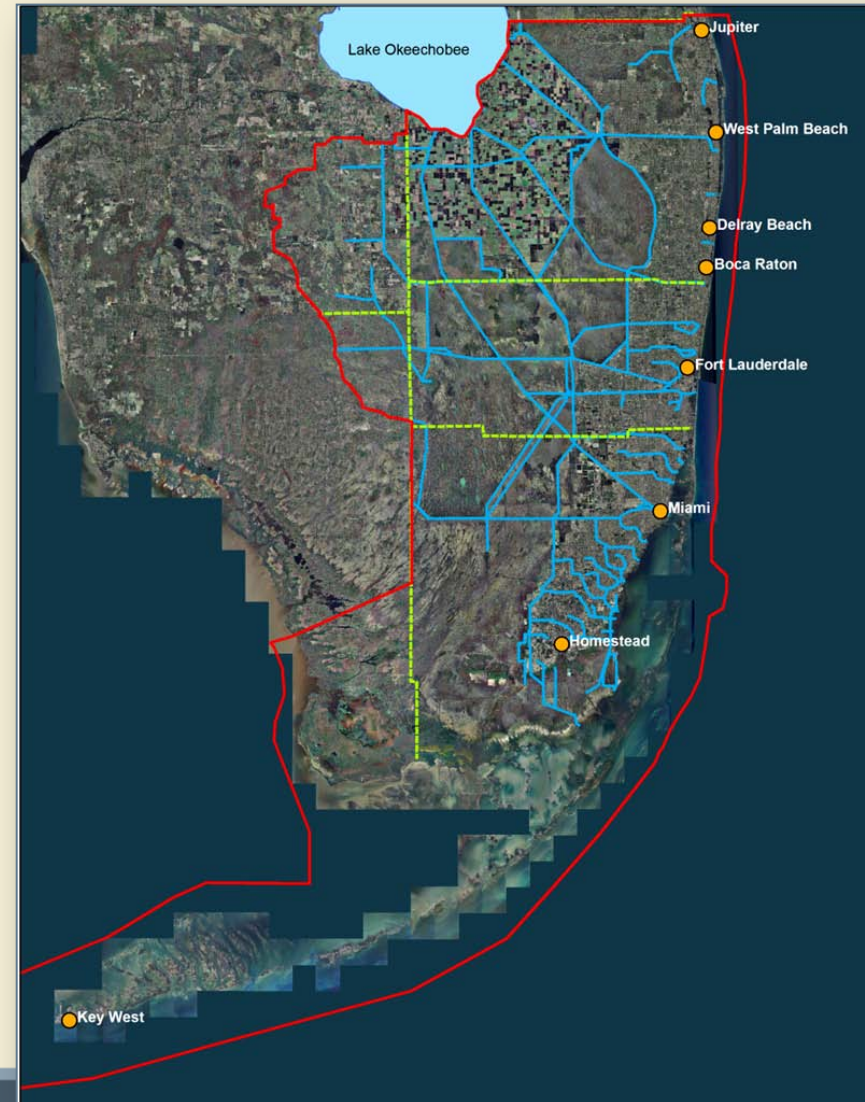
Water Resources Advisory Commission

February 3, 2012

Changes Since 2006 LEC Plan Update

Summary

- Lake Okeechobee
- Systems and Operations
- Additional resource protection rules
- Water Resource Development
- Economic downturn
- Water Supply Projects



Changes Since 2006 Plan Update (cont.)

Lake Okeechobee

- Lake Okeechobee Regulation 2008 schedule
- Updated Adaptive Protocols
- Change in status of Lake Okeechobee MFL
- Lake Okeechobee water shortage management
- Kissimmee inflows
- Distributed storage



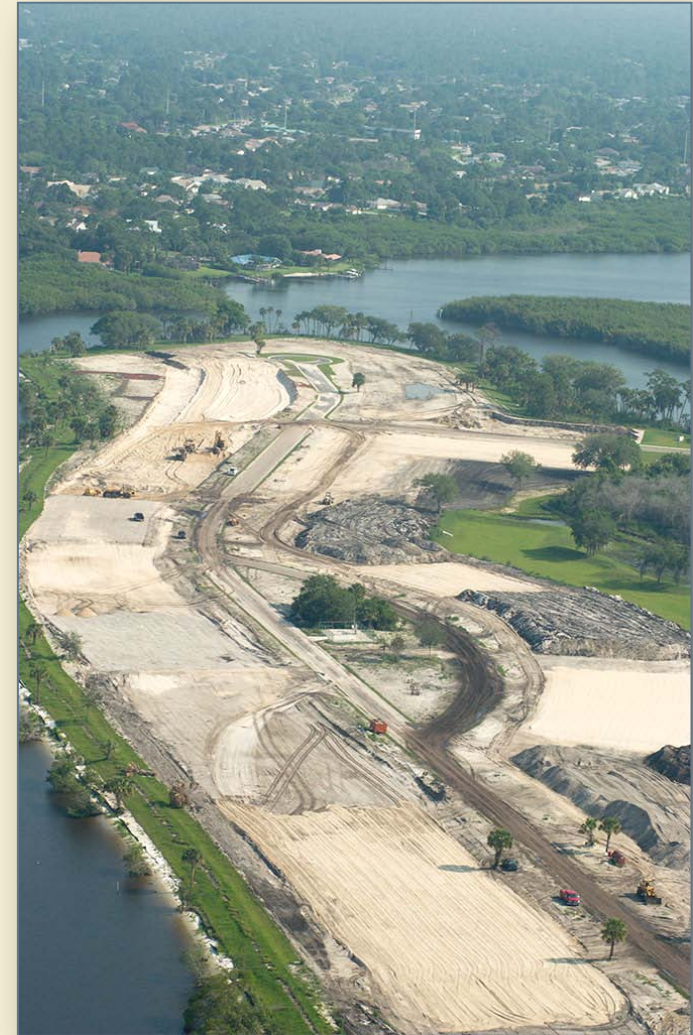
Changes Since 2006 Plan Update (cont.)

System and Operations

- E RTP WCA-3A schedule
- STA expansions
- Restoration strategies for regional water quality plan
- Sea level rise

Resource Protection Rules

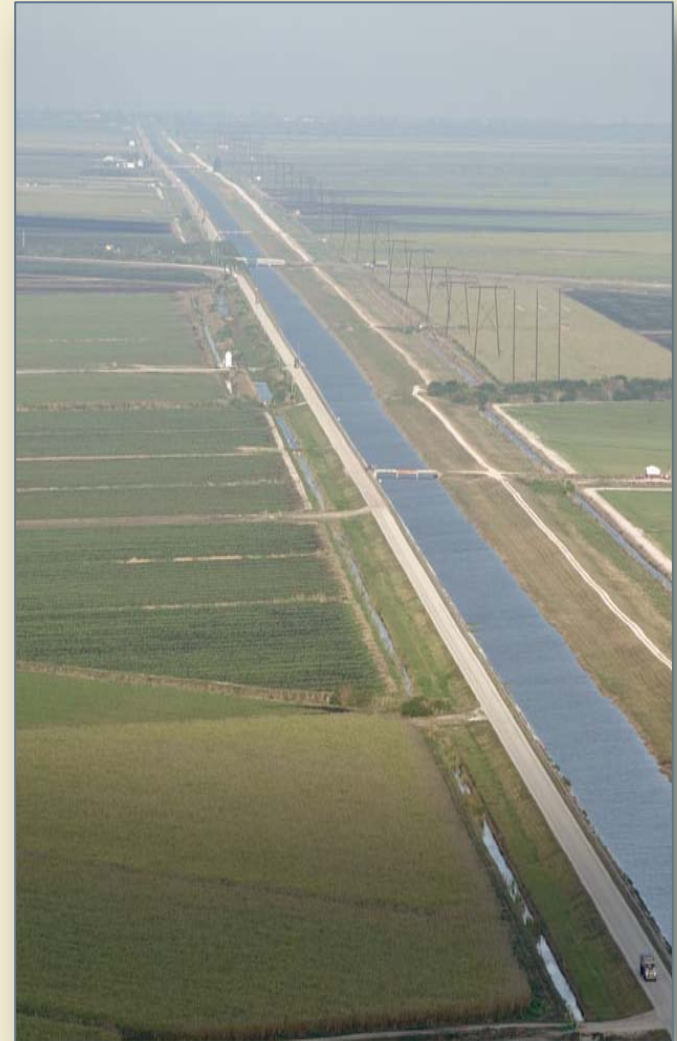
- Lower East Coast and Lake Okeechobee water availability rules
- Year-round landscape irrigation rules
- Caloosahatchee and Biscayne Bay reservation rule development



Changes Since 2006 Plan Update (cont.)

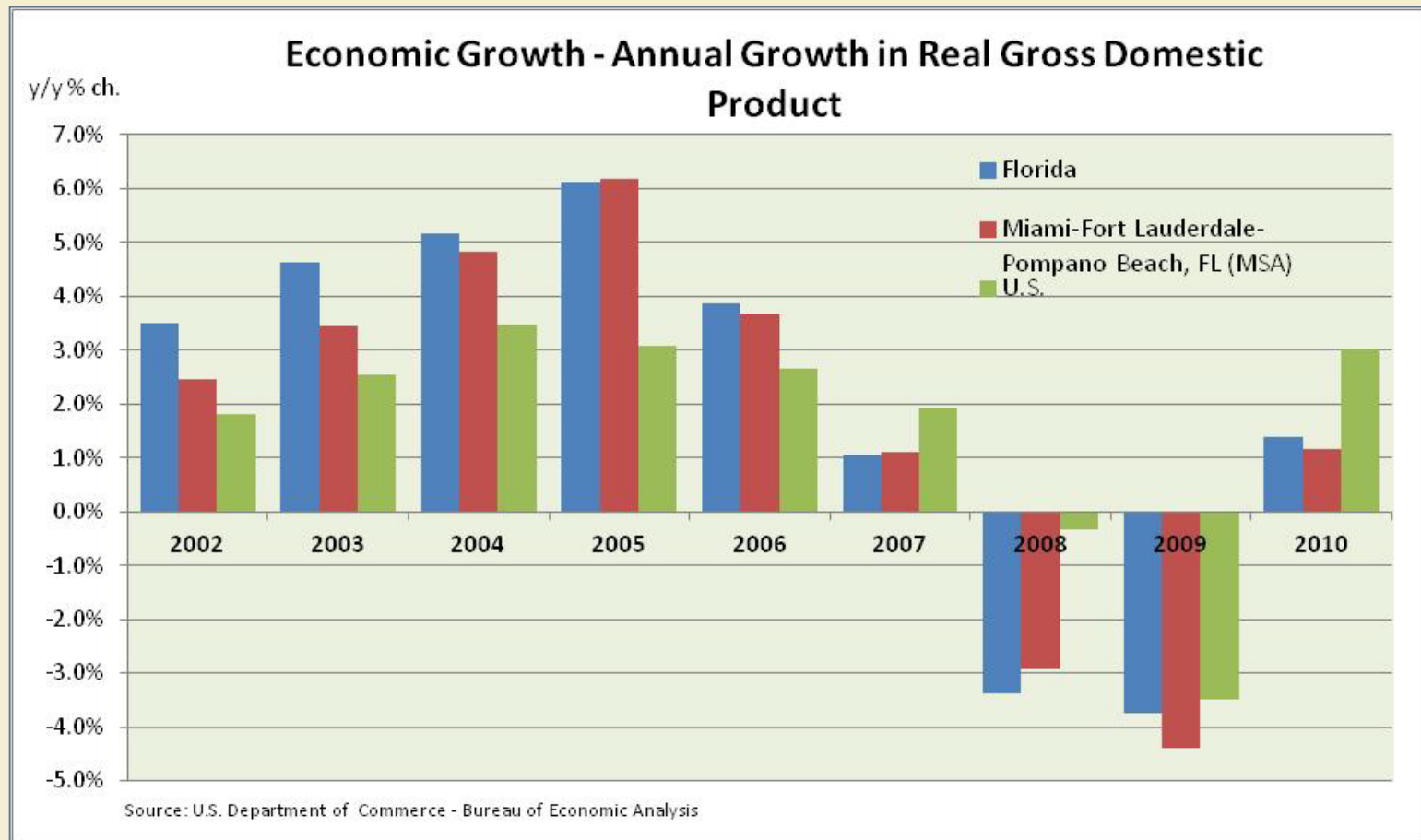
Water Resource Development

- C-51 Reservoir Partnership Study
- Floridan aquifer model development
- CERP projects - Yellow Book vs current direction
- Affects on water supply from the regional system modifications



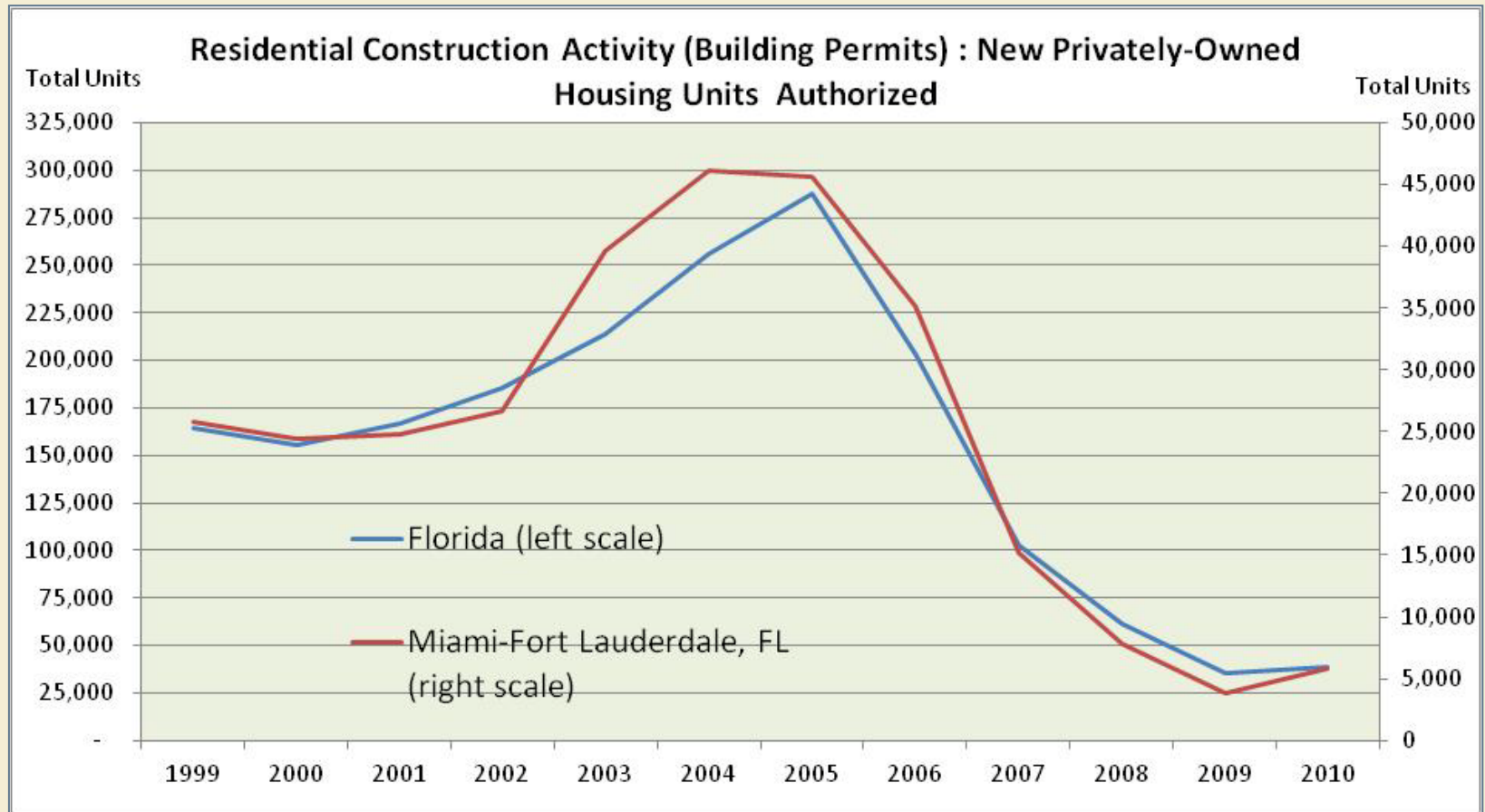
Changes Since 2006 Plan Update (cont.)

Economic Downturn



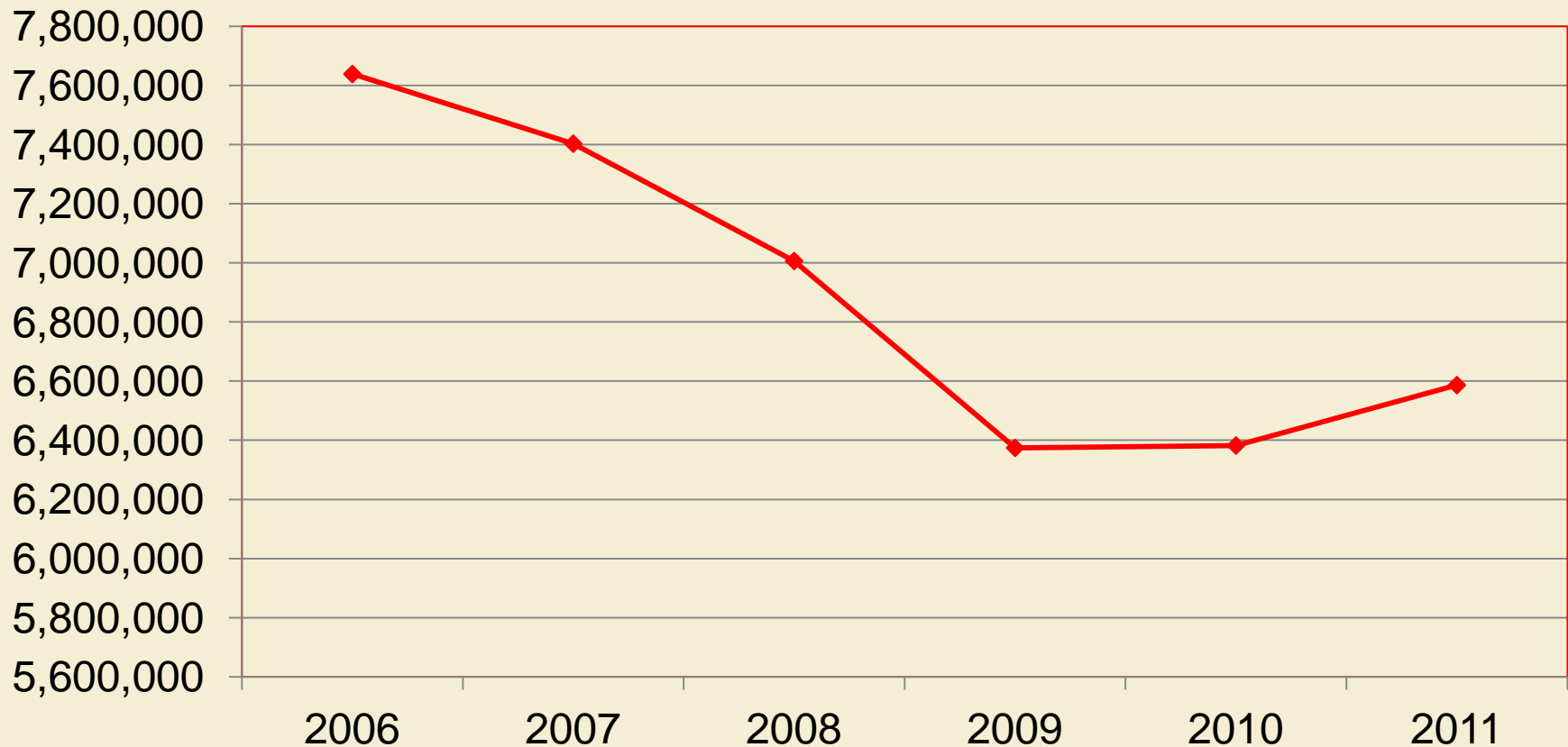
Changes Since 2006 Plan Update (cont.)

Economic Downturn



Changes Since 2006 Plan Update (cont.)

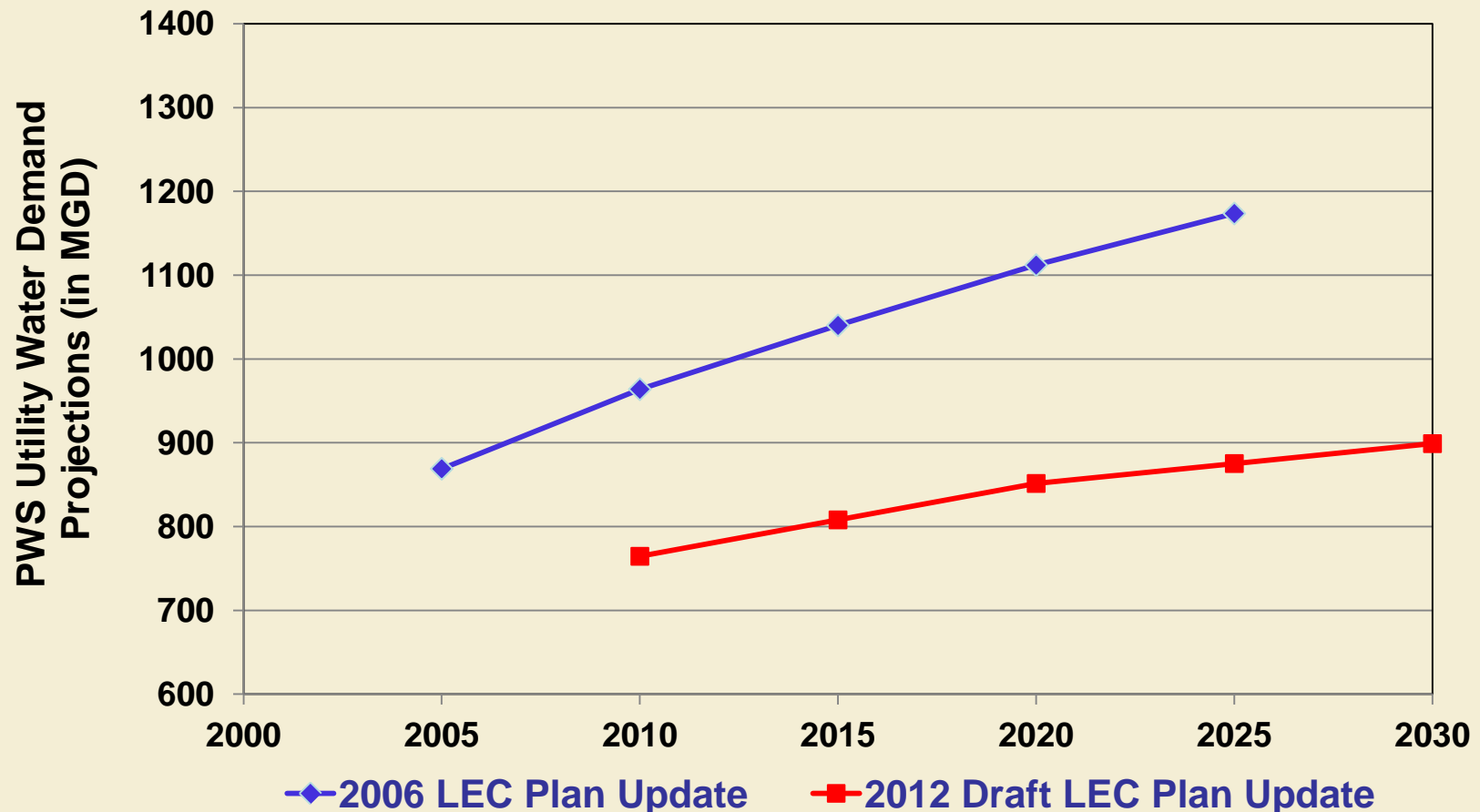
LEC Population Projections for 2030 by BEBR*



**Bureau of Economic and Business Research*

Changes Since 2006 Plan Update (cont.)

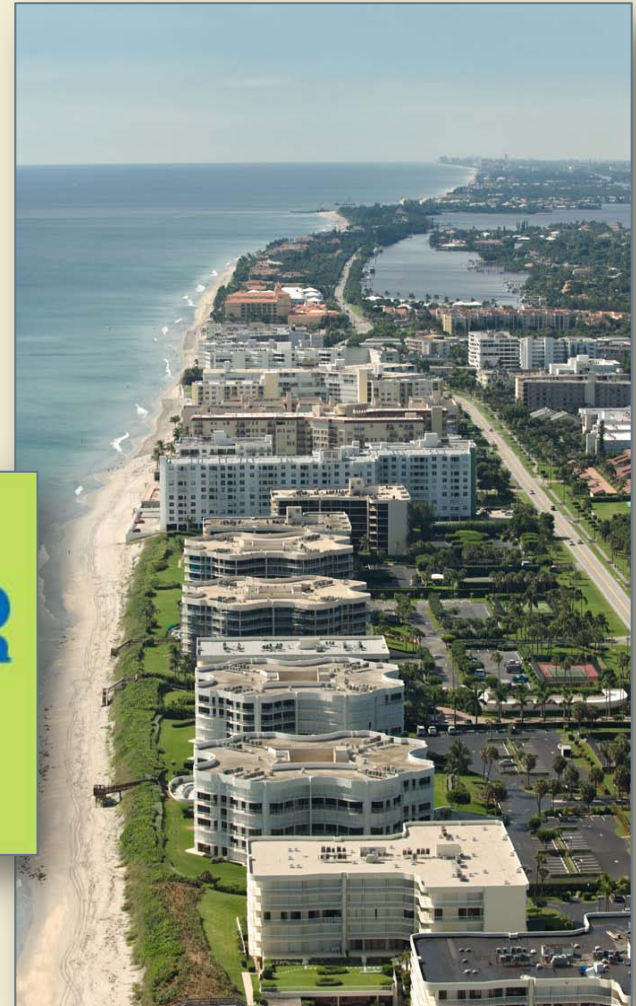
Public Water Supply Finished Water Demand Projections



Changes Since 2006 Plan Update (cont.)

Water Supply Projects

- 2008 Ocean Outfall Act
- Alternative water supply projects
- Conservation



Initial List of LEC Water Supply Issues

- Meeting 1-in-10 year level of service in Lake Okeechobee Service Area
- Timing of Everglades restoration projects and MFL recovery and prevention strategies
- Increase understanding of Floridan aquifer
- Fulfill requirements of 2008 Ocean Outfall Act
- Integrated Water Resource Management
 - Conjunctive uses, e.g., stormwater
- Effect of conservation

Initial List of LEC Water Supply Issues (cont.)

- What else? What is important to you in the near term? Long-term?

DRAFT Objectives

2012 LEC Plan Update

Objectives

■ **Water Supply**

- Identify sufficient water resource and water supply development options to meet projected 2030 demands during a 1-in-10 year drought event

■ **Conservation and alternative source development**

- Increase levels of conservation, efficiency of water use, and development of alternative water sources to meet projected demands

■ **Natural Systems**

- Protect and enhance the environment including the Everglades and other federal, state and locally identified natural resource areas

DRAFT Objectives

2012 LEC Plan Update (cont.)

Objectives

■ **Linkage with Local Governments**

- Provide information from the LEC Plan to local governments to support their comprehensive plans

■ **Compatibility and linkage with other planning efforts**

- Integrate with the CERP and other environmental projects
- Understand modifications to operating schedules for the regional system, including Lake Okeechobee
- Understand other local and regional water resource planning efforts

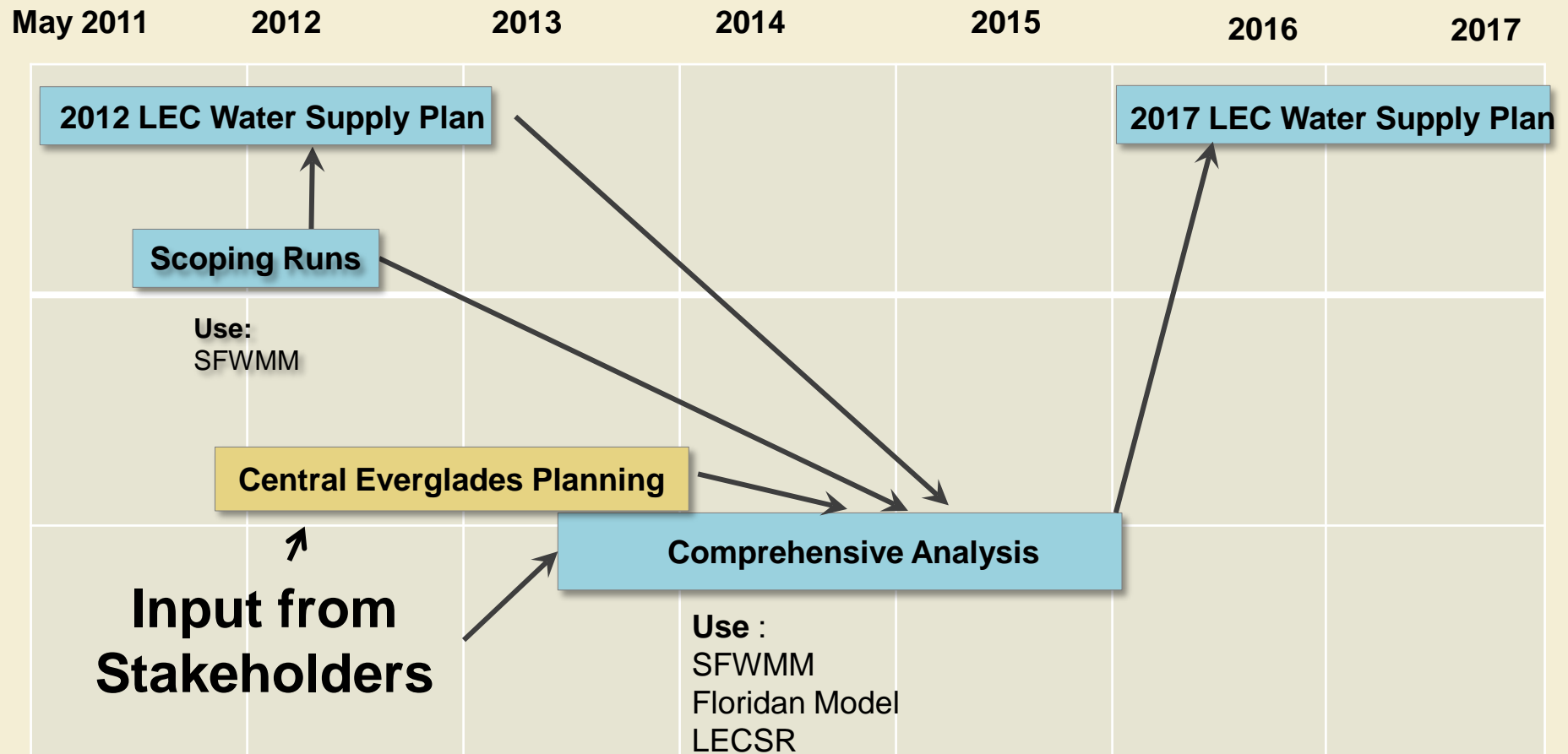
Scope of Plan and Water Resource Analysis



Options

- ❑ Develop scope to meet 2012 deadline
- ❑ Develop scope to meet 2012 deadline & recommend continued analysis to assess water resources conditions
- ❑ Develop scope to meet 2012 deadline and assess water resource conditions with regional models
 - ✓ *In addition, complete Comprehensive Analysis with additional models after completing 2012 LEC Plan*

Current Schedule to Support LEC Water Supply Plan Updates



Method to Assess Changes

Scoping Runs

- **Utilize South Florida Water Management Model (SFWMM)**
- **Purpose is to describe condition of the water resources while meeting water demands including natural systems**
- **Alternative analyses will be part of a comprehensive analysis**
- **Three Scenarios:**
 - 2010 existing conditions and actual demands
 - 2030 demands with near-term projects
 - 2030 demands with anticipated restoration projects

Central Everglades Planning Project

- **Planning Goal:**

- To improve the quantity, quality, timing and distribution of water in the Northern Estuaries, Water Conservation Area 3, and Everglades National Park in order to restore the hydrology, habitat and functions of the natural system

- **Recommendations may affect MFL Prevention and Recovery Strategies**

- **Continuing coordination**

Questions?

