



SOUTH FLORIDA WATER MANAGEMENT DISTRICT

NEWS RELEASE

July 9, 2015

MEDIA CONTACT:

Randy Smith

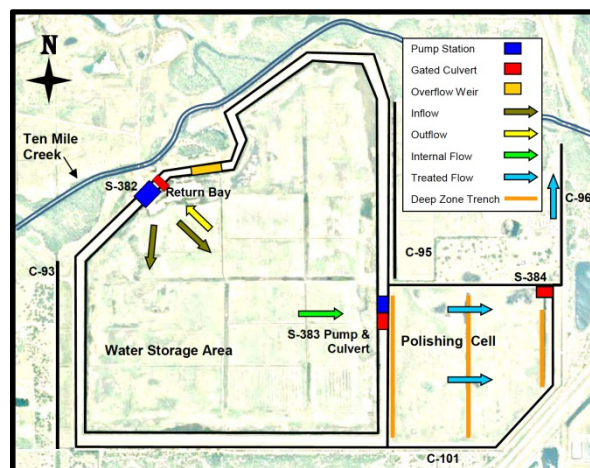
South Florida Water Management District

Office: (561) 682-2800 or Cellular: (561) 389-3386

www.sfwmd.gov/news

follow us on 

SFWMD Starts Up Wet Season Water Storage for the St. Lucie River *Ten Mile Creek will also help improve water quality for the river and estuary*



(Click on the map for a larger version.)

Port St. Lucie, FL – Engineers at the South Florida Water Management District (SFWMD) this month began pumping operations at the Ten Mile Creek Water Preserve Area to store and clean water during the 2015 wet season to help protect the St. Lucie River and Estuary.

“I am proud that we are able to provide a portion of the intended benefits of this piece of the ecosystem restoration plan for the St. Lucie River,” said SFWMD Governing Board Chairman Daniel O’Keefe. “We appreciate the efforts of the U.S. Army Corps of Engineers and the Florida Department of Environmental Protection to help make it possible to operate the project for this wet season.”

While the project, a partnership with the U.S. Army Corps of Engineers (USACE), continues through the federal process, the Corps authorized the SFWMD to operate the site to provide key benefits to the river this wet season.

Consistent with the original purpose of the project, the wet season operations will help to reduce nutrients and freshwater flows to the river and estuary.

“Progress demands a strong commitment to collectively develop and implement solutions,” said Col. Alan Dodd, U.S. Army Corps of Engineers Jacksonville District Commander. “What we've been able to accomplish alongside the South Florida Water Management District exemplifies what is possible when we all work together within our given authorities to provide operational and ecological benefits to South Florida.”

Background:

The Ten Mile Creek Water Preserve Area was designed to improve the timing and volume of water deliveries to the North Fork of the St. Lucie River by capturing and storing stormwater runoff from the Ten Mile Creek Basin.

Secondary benefits of the project include reduction of fine sediment and nutrient loadings to the St. Lucie River, increased freshwater recharge into the aquifer and capability to make releases back to Ten Mile Creek for water supply when needed.

Diverted stormwater from Ten Mile Creek will be stored in the Water Storage Area and will pass through a shallow water Polishing Cell for water quality treatment, primarily to reduce nutrient levels, before being released into Ten Mile Creek.

#

About the South Florida Water Management District

The South Florida Water Management District is a regional, governmental agency that oversees the water resources in the southern half of the state – 16 counties from Orlando to the Keys. It is the oldest and largest of the state's five water management districts. The agency mission is to manage and protect water resources of the region by balancing and improving water quality, flood control, natural systems and water supply. A key initiative is cleanup and restoration of the Everglades.