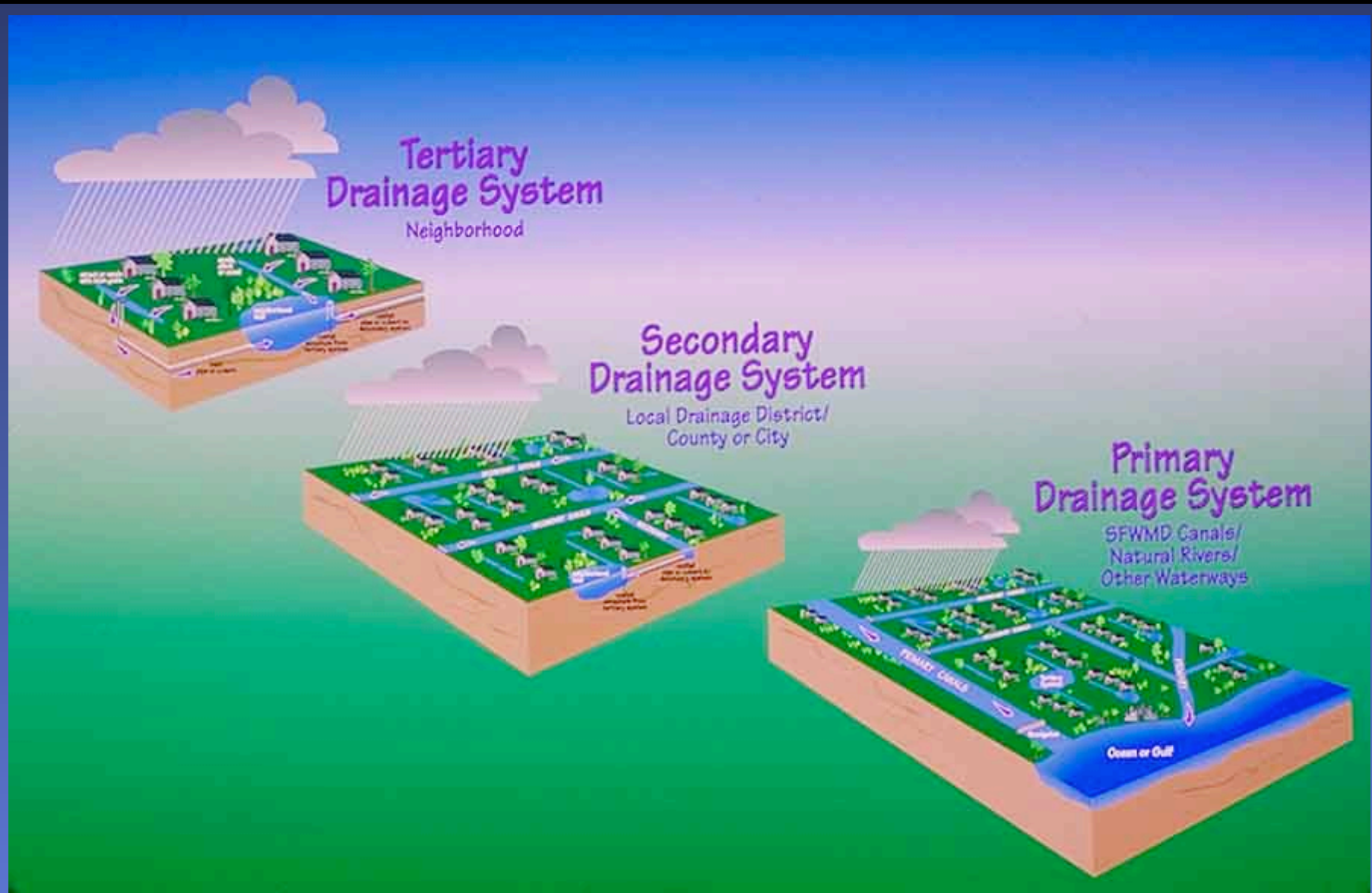


# **"Know the Flow"**

## ***Module 2 Secondary Stormwater Management System***



**[sfwmd.gov](http://sfwmd.gov)**



# Secondary Drainage System

Local Drainage District/  
County or City



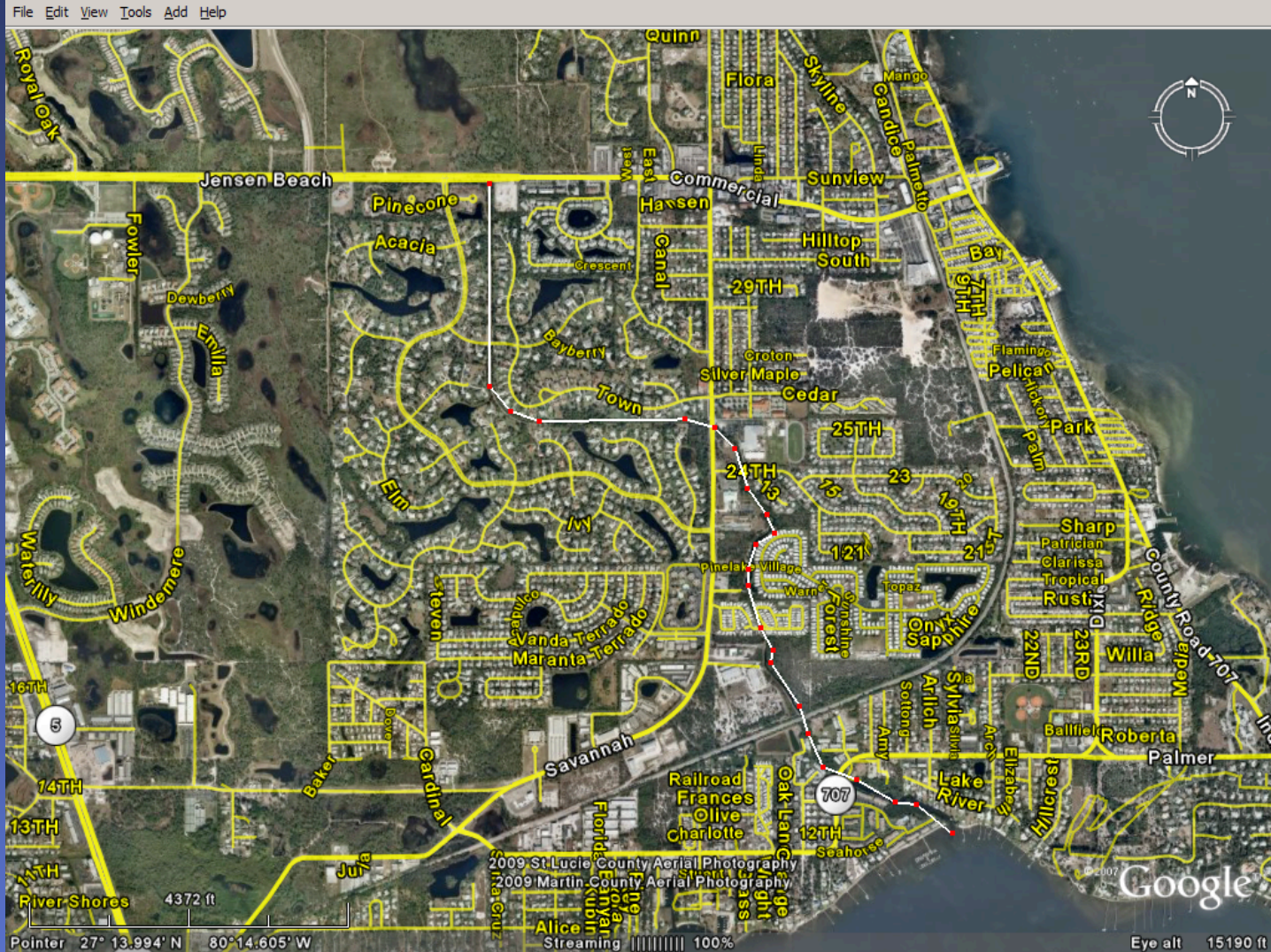
## **Secondary Systems**

- Operated and maintained primarily by Local Government, Special Districts or FDOT
- Convey stormwater from the individual communities to the Primary System or to the ultimate receiving water body, River, Ocean or Natural System.

## Examples of Secondary Conveyance Systems

- Coral Gardens Canal
- Danforth Creek
- Warner Creek
- Salerno Creek
- Ten Mile Creek
- Five Mile Creek
- Elkam Waterway
- Monterrey Waterway

# SOUTH FLORIDA WATER MANAGEMENT DISTRICT



## Warner Creek

[sfwmd.gov](http://sfwmd.gov)

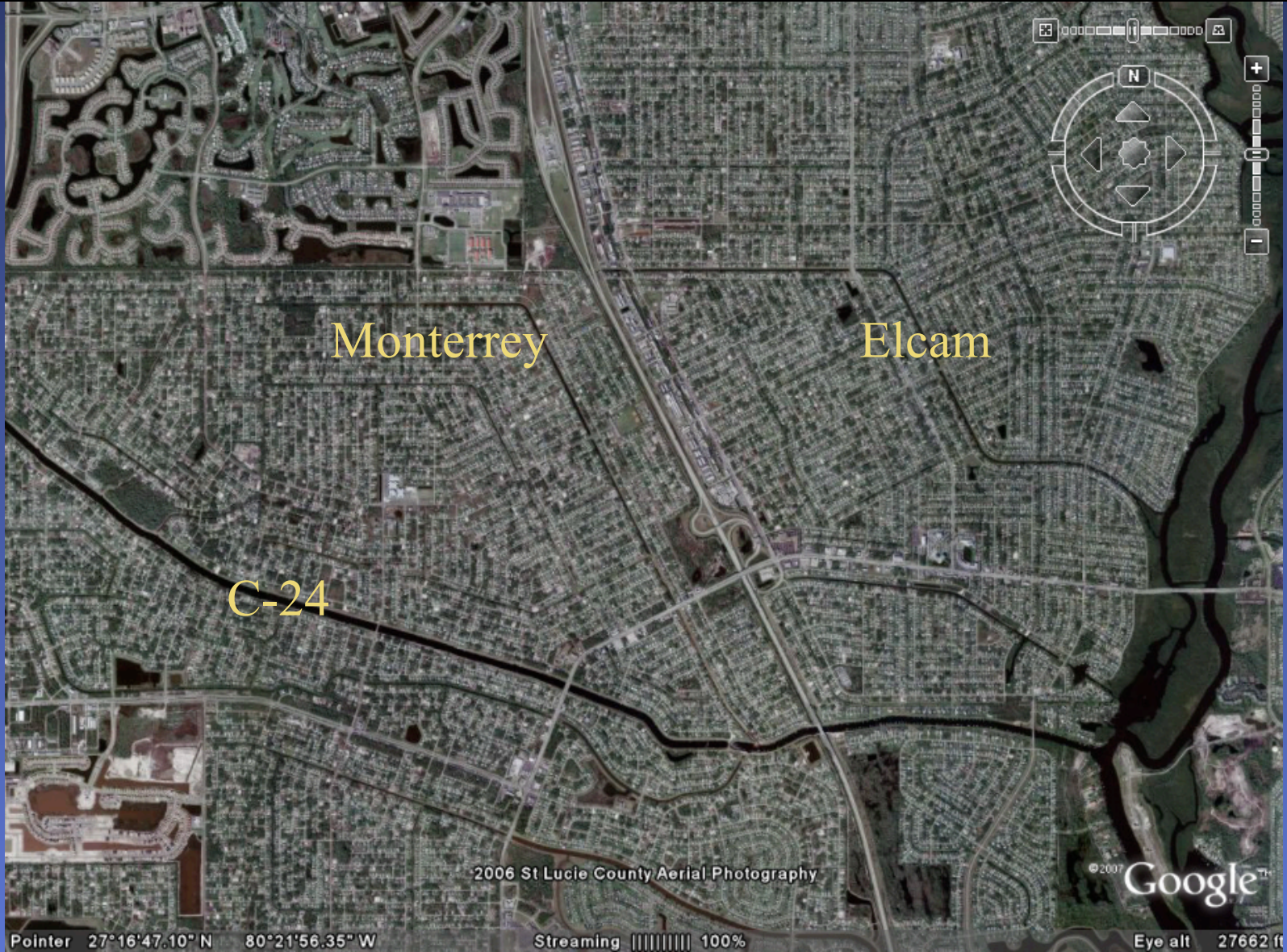
SOUTH FLORIDA WATER MANAGEMENT DISTRICT



## Secondary Canal Warner Creek

[sfwmd.gov](http://sfwmd.gov)

SOUTH FLORIDA WATER MANAGEMENT DISTRICT





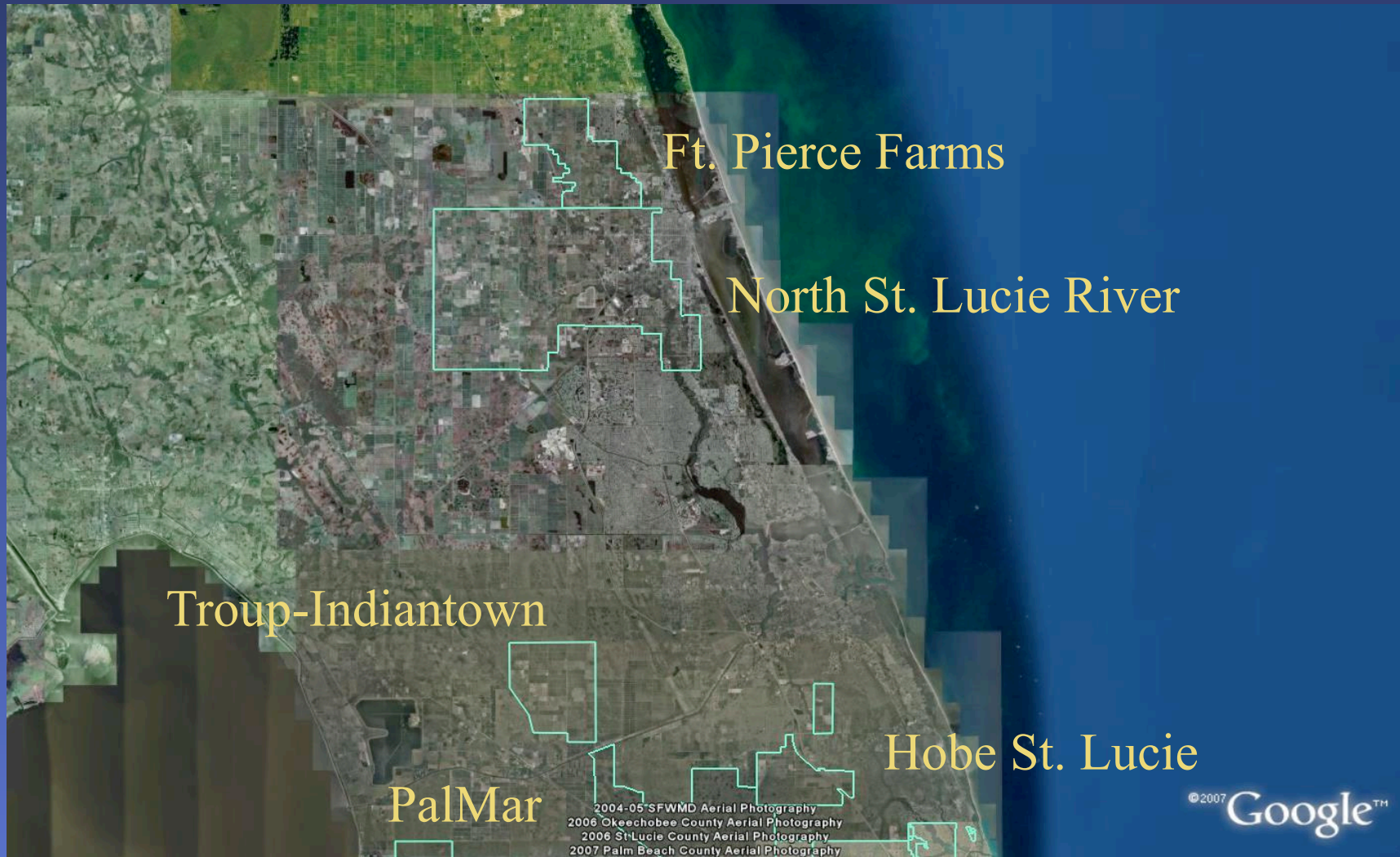


**Gordy Road Control Structure at 10 Mile  
Creek (Secondary -NSLRWCD)**

## **Special Secondary Districts within Martin and St. Lucie Counties**

- Fort Pierce Farms Water Control District
- North St Lucie River Water Control District
- St. Lucie West Services District
- Tradition Community Development District
- Reserve Community Development District
- Hobe St. Lucie
- Troupe Indiantown

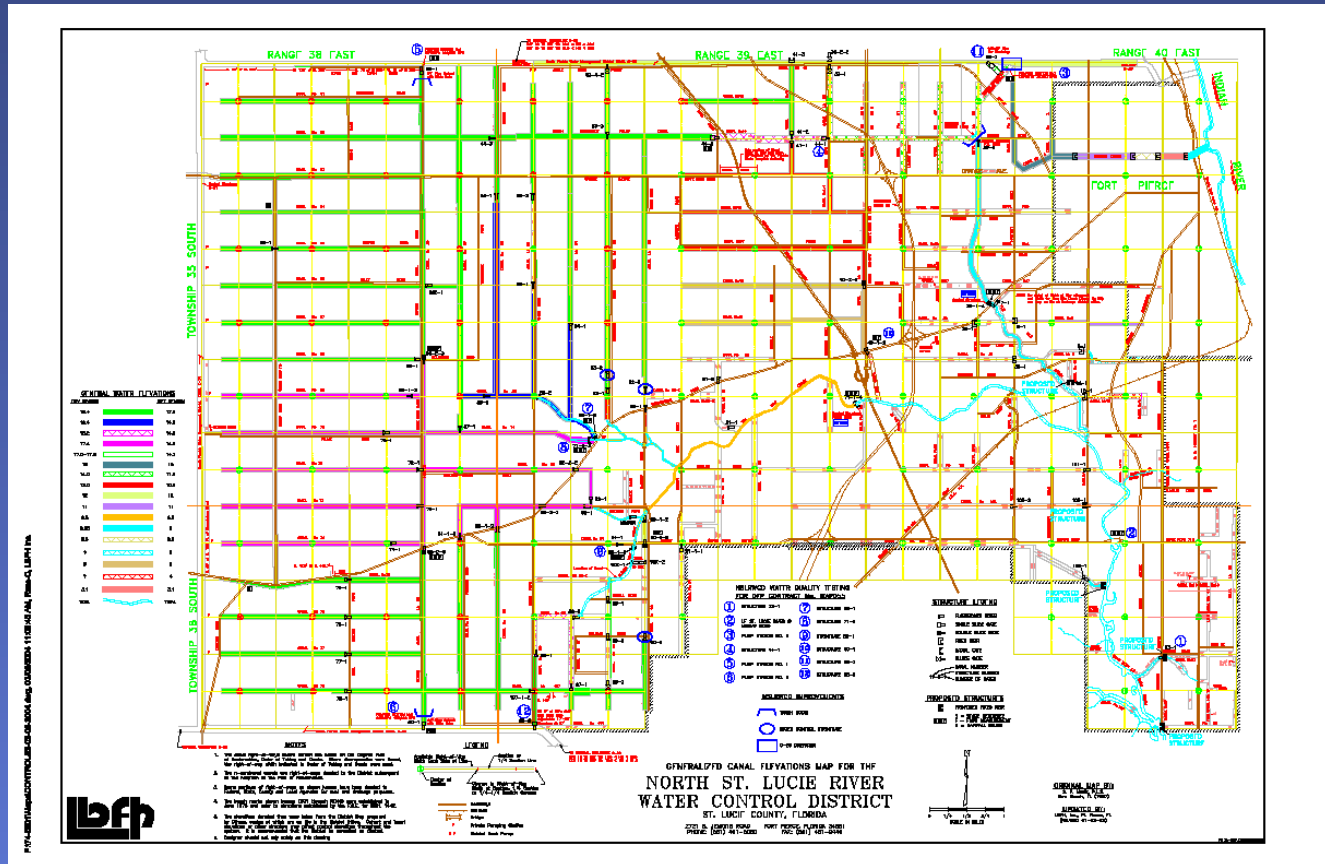
SOUTH FLORIDA WATER MANAGEMENT DISTRICT



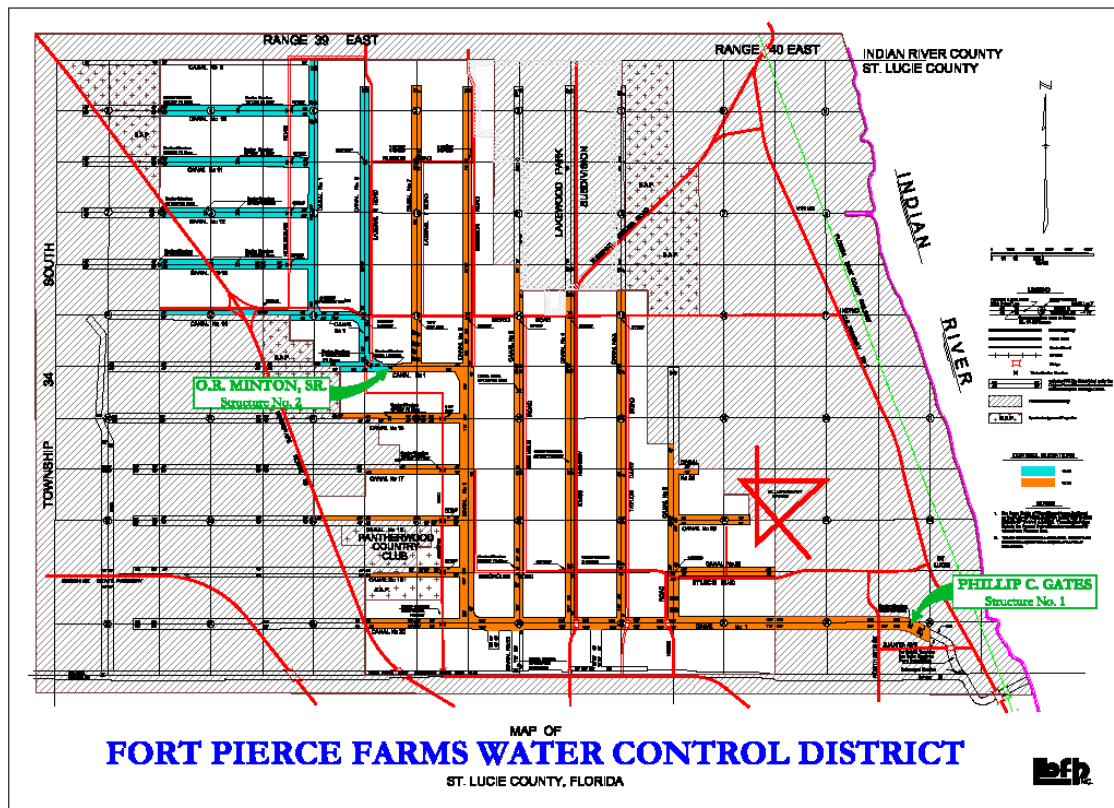
**Local Drainage Districts - Martin and St. Lucie Counties**

**[sfwmd.gov](http://sfwmd.gov)**

# North St. Lucie River Water Control District



# Ft. Pierce Farms Water Control District



# Questions?

## Secondary Drainage System

Local Drainage District/  
County or City

