

# Compartment B and Compartment C Buildout Stormwater Treatment Areas Update

**Public Meeting on the Long-Term Plan for  
Achieving Water Quality Goals for the  
Everglades Protection Area Tributary Basins**

**May 27, 2009**

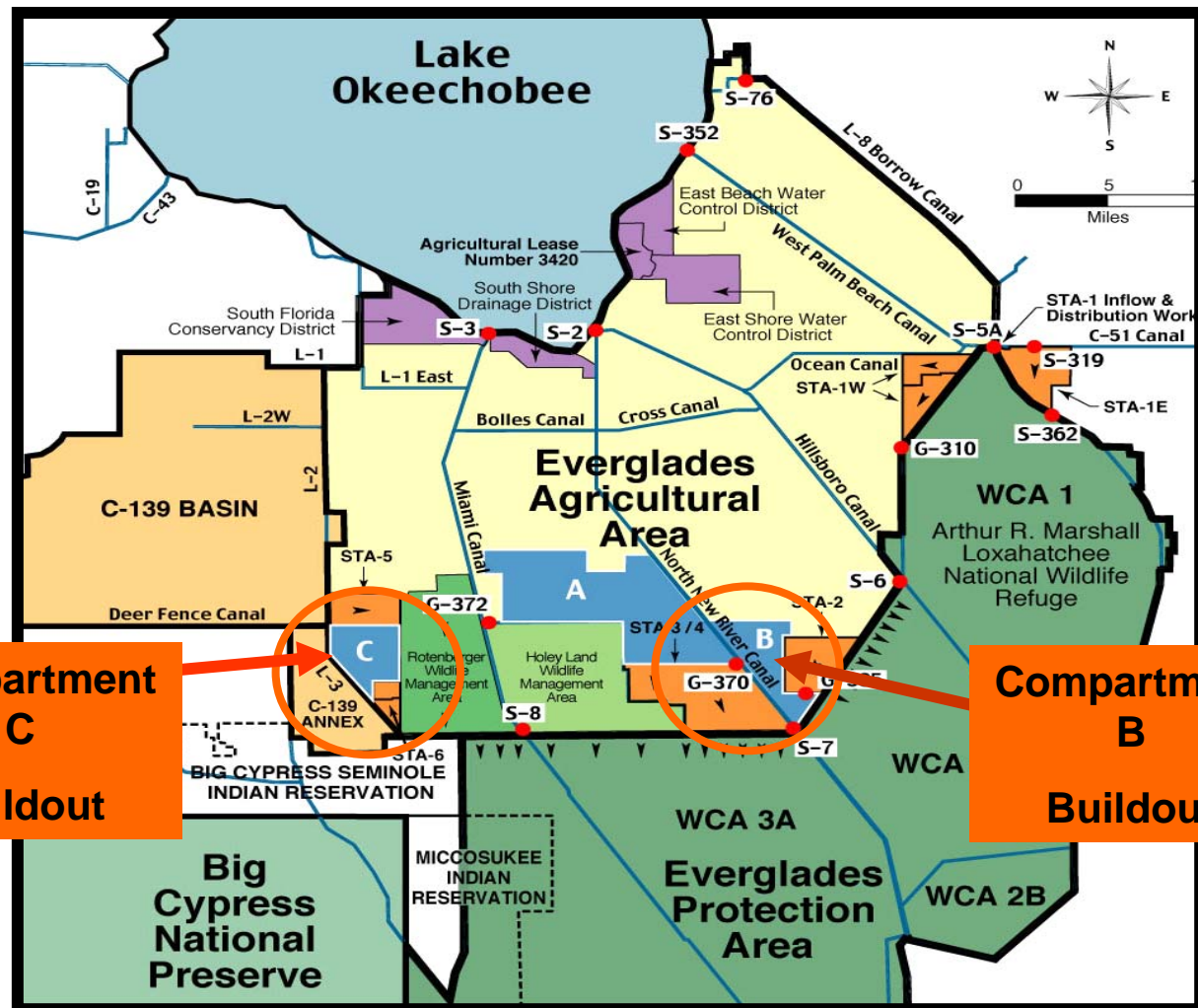
**Matthew Alexander, P.E.**

**Project Manager**

**Everglades Restoration Resource Area – Engineering Department**

**[malexand@sfwmd.gov](mailto:malexand@sfwmd.gov)**


# Location



**Compartment  
C  
Buildout**

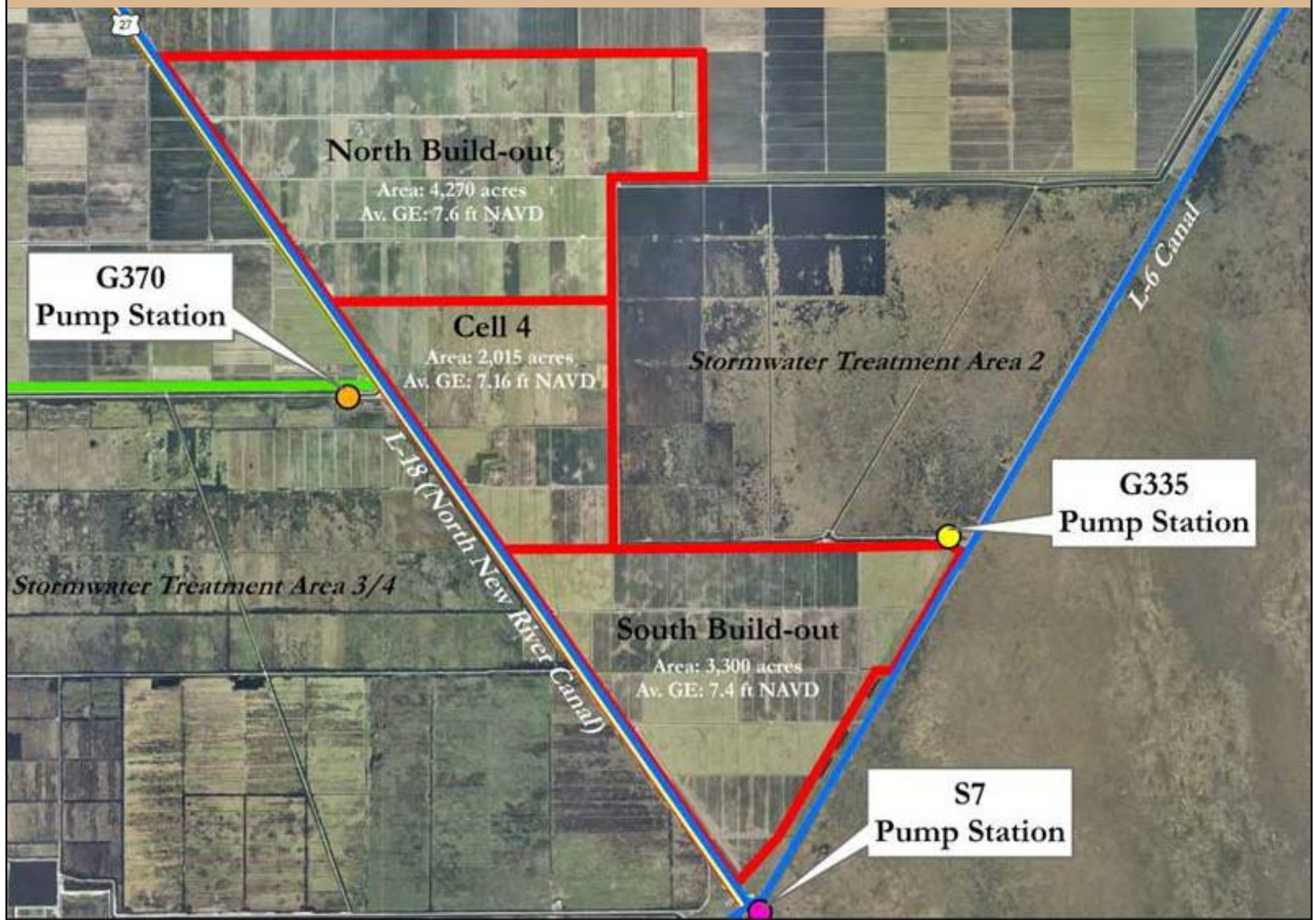
**Compartment  
B  
Buildout**

## Basis and Purpose


- 
- **Component of the Everglades Construction Project and the Everglades Protection Area Tributary Basins Long-Term Plan for Achieving Water Quality Goals (Long-Term Plan)**
  - **Included in the 10-Year Strategic Plan and the current Annual Plan**
  - **Assist with Redistribution of Flows and Loads in the Stormwater Treatment Area System to achieve optimal performance**



# SOUTH FLORIDA WATER MANAGEMENT DISTRICT



## Compartment B Buildout Status of Project


- 
- ✓ **Civil Works Final Design October 22, 2008**
  - ✓ **Bid Openings in December 2008 for North Buildout and South Buildout**
  - ✓ **Received Florida Department of Environmental Protection Everglades Forever Act construction permit requiring design change of discharge to Water Conservation Area 2A**
    - **60% design of discharge modification due in middle of September 2009**
    - **conceptual design due late June 2009**
  - ✓ **Received U.S. Army Corps of Engineers 404 permit**



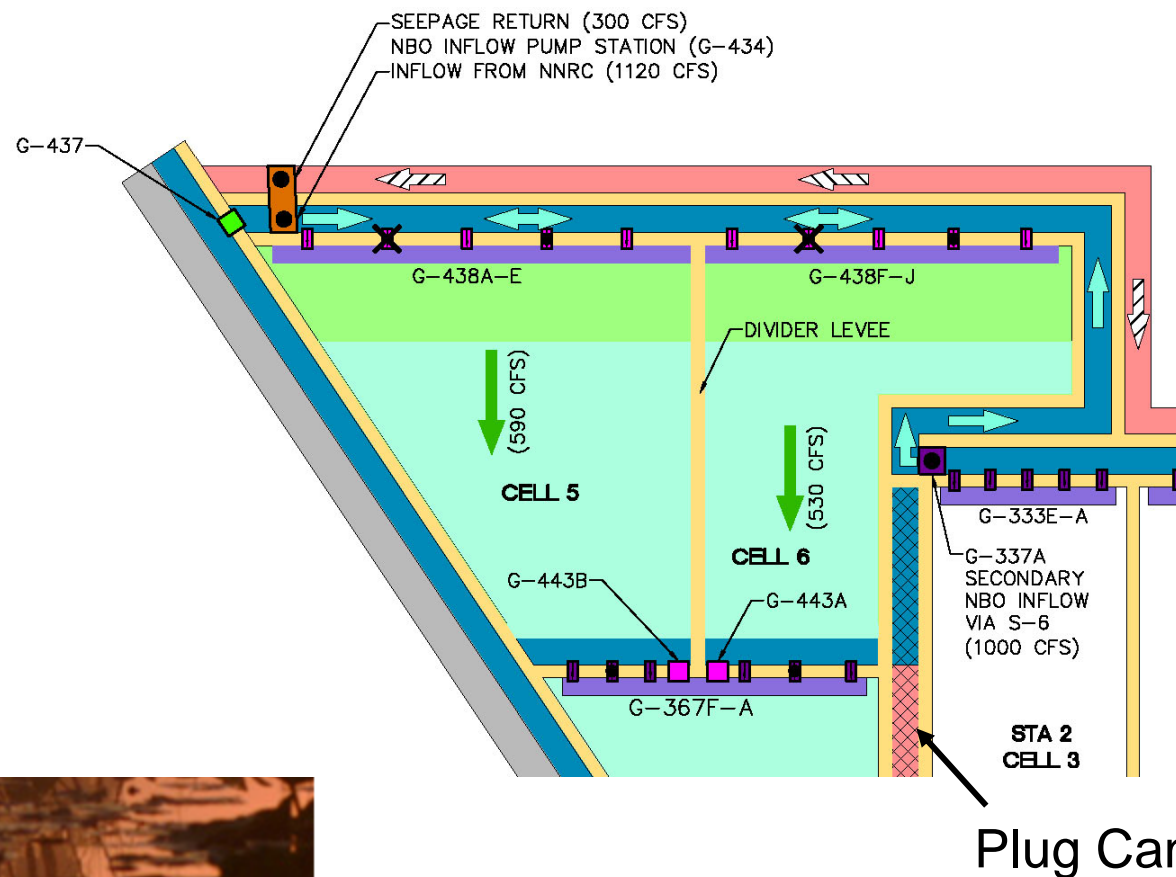
# SOUTH FLORIDA WATER MANAGEMENT DISTRICT



## Compartment B Buildout Schedule

- 
- ✓ Okeelanta Bridge replacement under construction
  - ✓ Florida Power & Light Distribution Contract
  - ✓ Florida Power & Light Land Exchange Agreement
  - ✓ Pump Procurement Contract Execution
  - ✓ North Buildout and South Buildout Civil Works  
Construction Contracts awarded in May 2009
  - ✓ Civil Works Notice-to-Proceed about June 1
  - ✓ Final Design for the G-434, G-436, and G-435  
Pump Stations May 2009
  - Contract Award Pump Stations July 2009

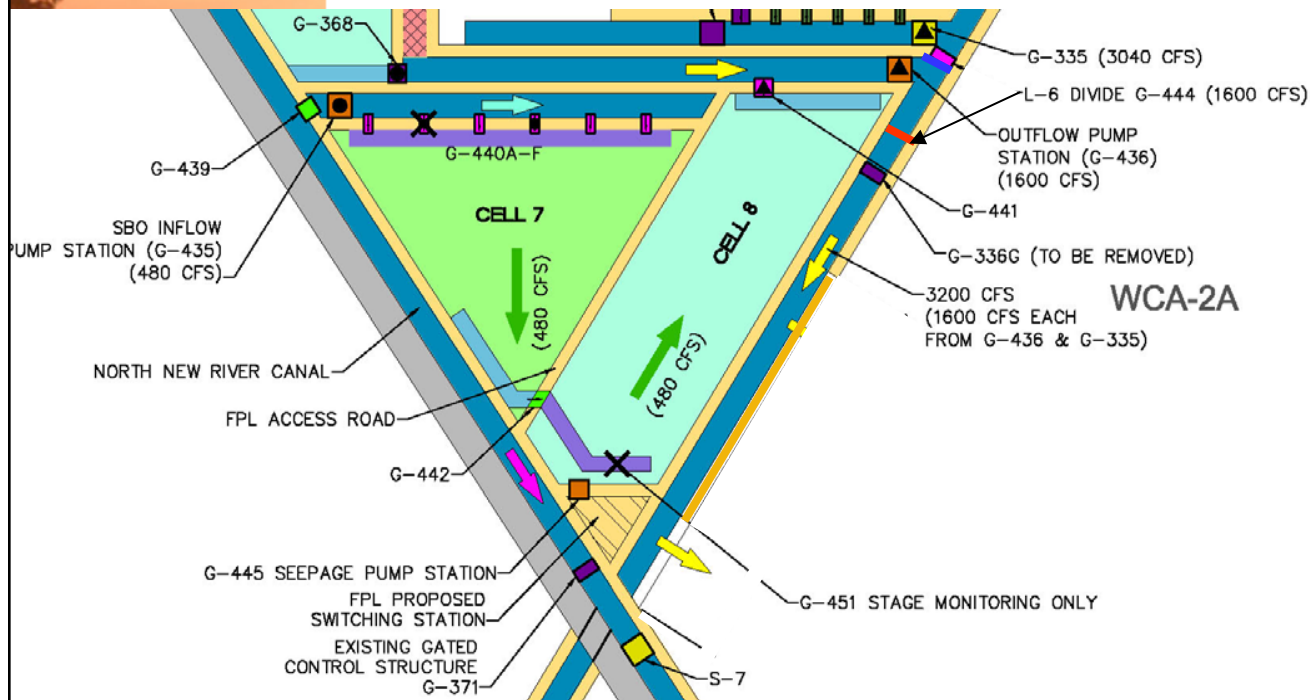
# North Buildout Stormwater Treatment Area Features



- **G-434 Pump Station (1,120 cfs)**
- **Site 4,300 acres (3,882 acres of treatment)**
- **15 miles of levee**
- **15 miles of canal**
- **12 control structures**
- **West L-6 Levee Repair**



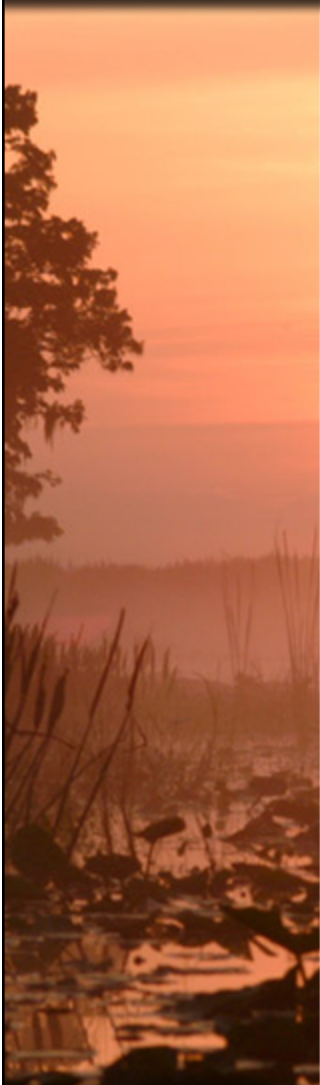
## South Buildout Stormwater Treatment Area Features



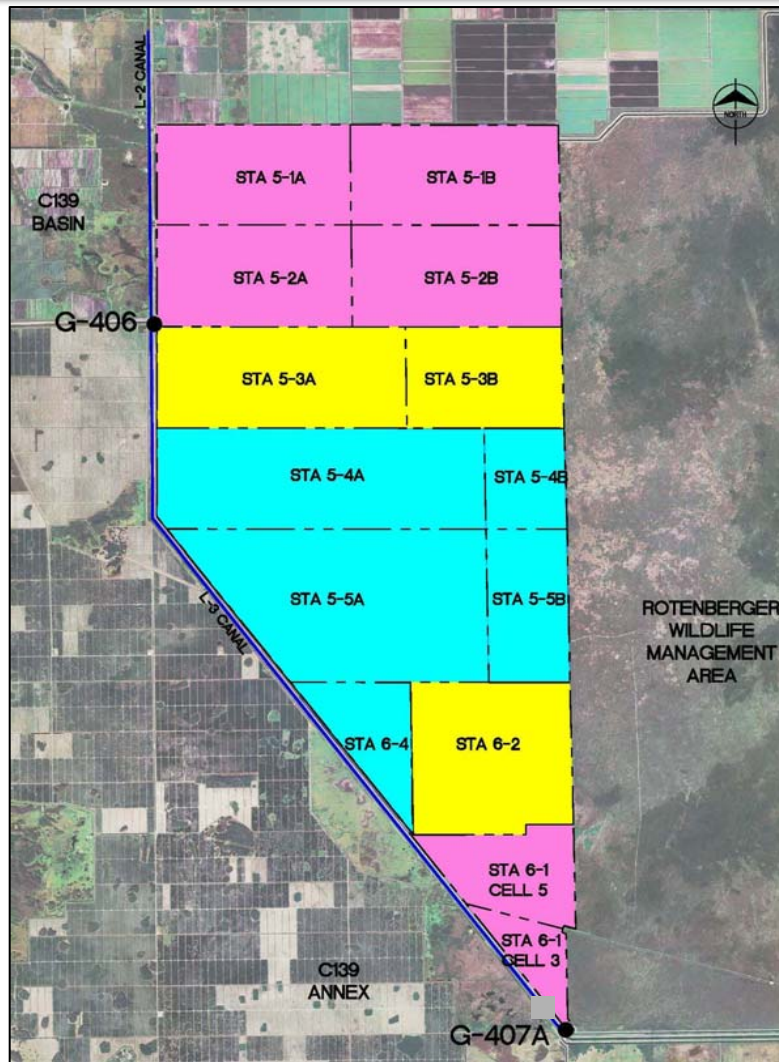
- **G-435 Pump Station (480 cfs)**
- **G-436 Pump Station (1,600 cfs)**
- **Site 3,275 acres (2,935 acres of treatment)**
- **8 miles of canal**
- **9 miles of levee**
- **8 control structures**
- **G-445 Seepage Pump Station**



## Okeelanta Bridge



# Compartment C Buildout



## Existing Conditions

- STA 5-1: 2,055 Acres
  - STA 5-2: 2,055 Acres
  - STA 6-1: 870 Acres
- (Total Effective Treatment Area = 4,980 Acres)

## Phase 1 – Initial Expansions

- STA 5-3: 1,985 Acres
  - STA 6-2: 1,387 Acres
- (Total Effective Treatment Area = 3,372 Acres)


## Phase 2 – Buildout

- STA 5-4: 1,626 Acres
  - STA 5-5: 2,500 Acres
  - STA 6-4: 530 Acres
- (Total Effective Treatment Area = 4,656 Acres)

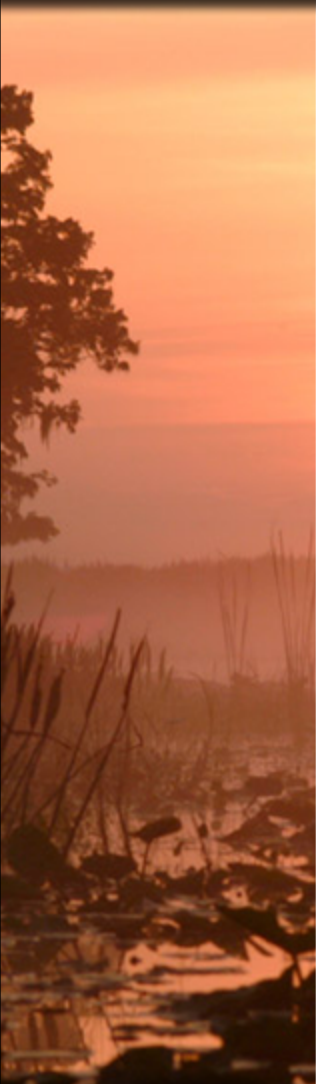
TOTAL AREA = 13,202 Acres



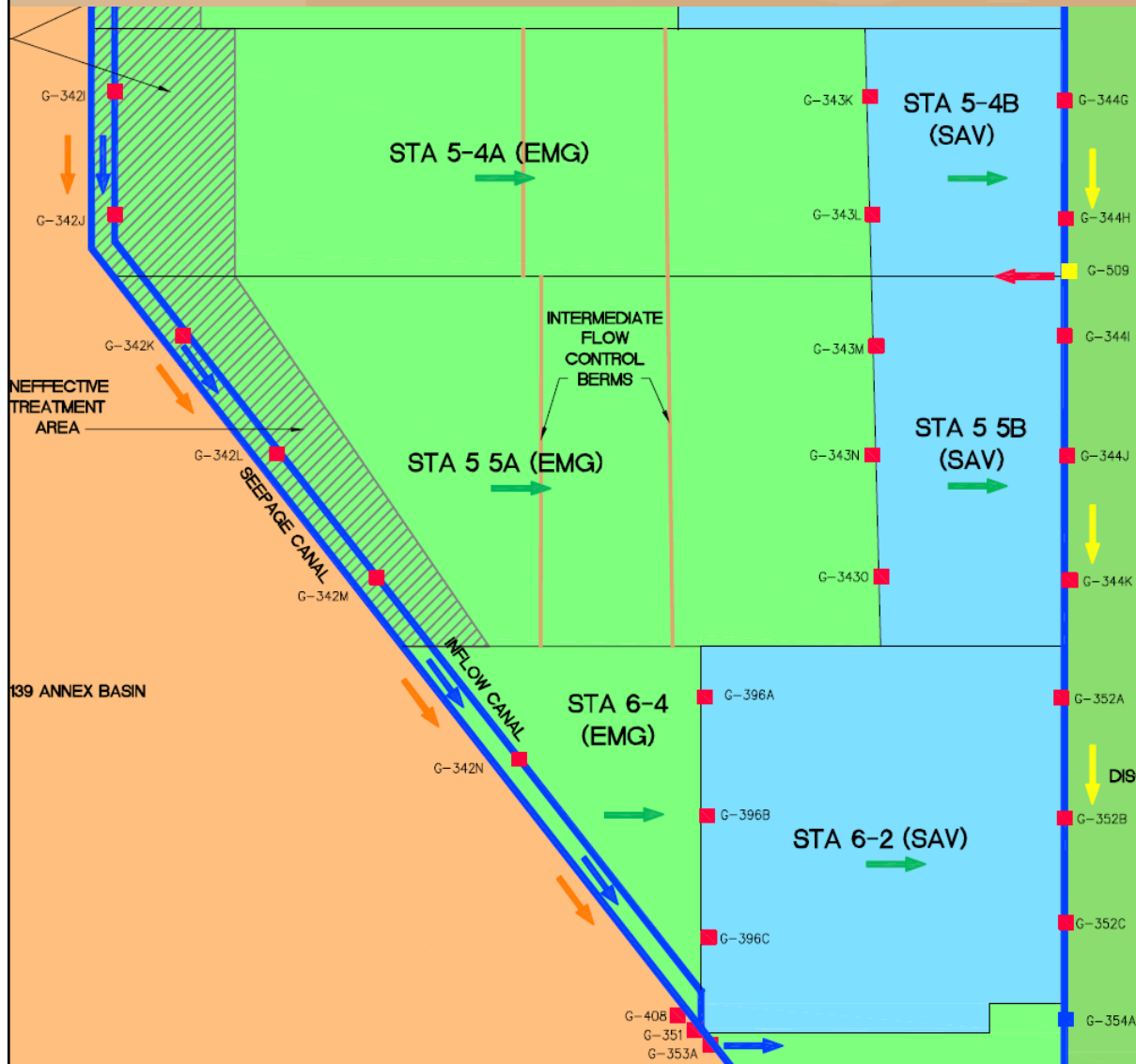
## Compartment C Buildout Status of Project

- 
- ✓ **Civil Works Final Design October 23, 2008**
  - ✓ **Bid Opening December 10, 2008**
  - ✓ **Florida Department of Environmental Protection  
Everglades Forever Act construction permit  
received**
  - ✓ **U.S. Army Corps of Engineers 404 permit  
received**
  - ✓ **Governing Board in March approved  
construction contract of Civil Works**
  - ✓ **Notice to Proceed for Civil Works contract of  
April 6, 2009**

## Compartment C Buildout Schedule

- 
- ✓ **Florida Power & Light Distribution Contract**
  - **Final Design Pump Station      June, 2009**
  - **Pump Station Contract Award  
August 13, 2009**

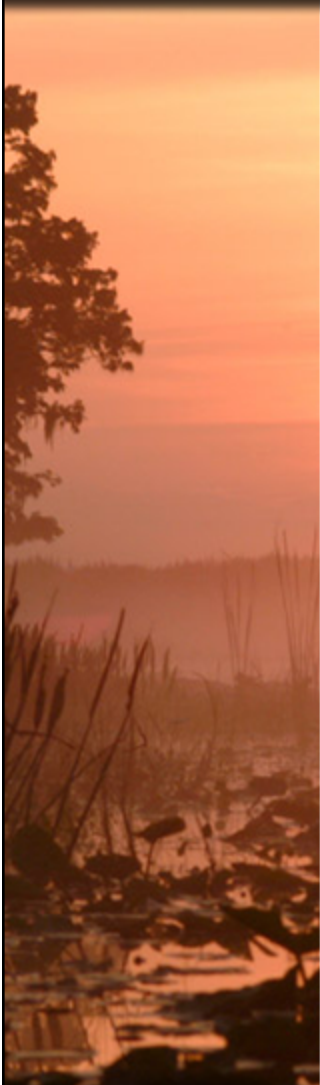
# Compartment C Buildout Features



- **G-508 Pump Station (1,630 cfs)**
- **Site 6,395 acres(4,850 acres of treatment)**
- **Levees 32 miles**
- **Canals 27 miles**
- **Hydration Pump Station (1) 100 cfs**
- **18 Inflow/Outflow Control Structures**
- **9 Hydration Culverts**
- **20 Overflow Weirs**
- **Diversion Structures (G-408 & G-411)**
- **Modify G-351**
- **Underground Power Lines 18 miles**



## Compartment C





**Thank you**