



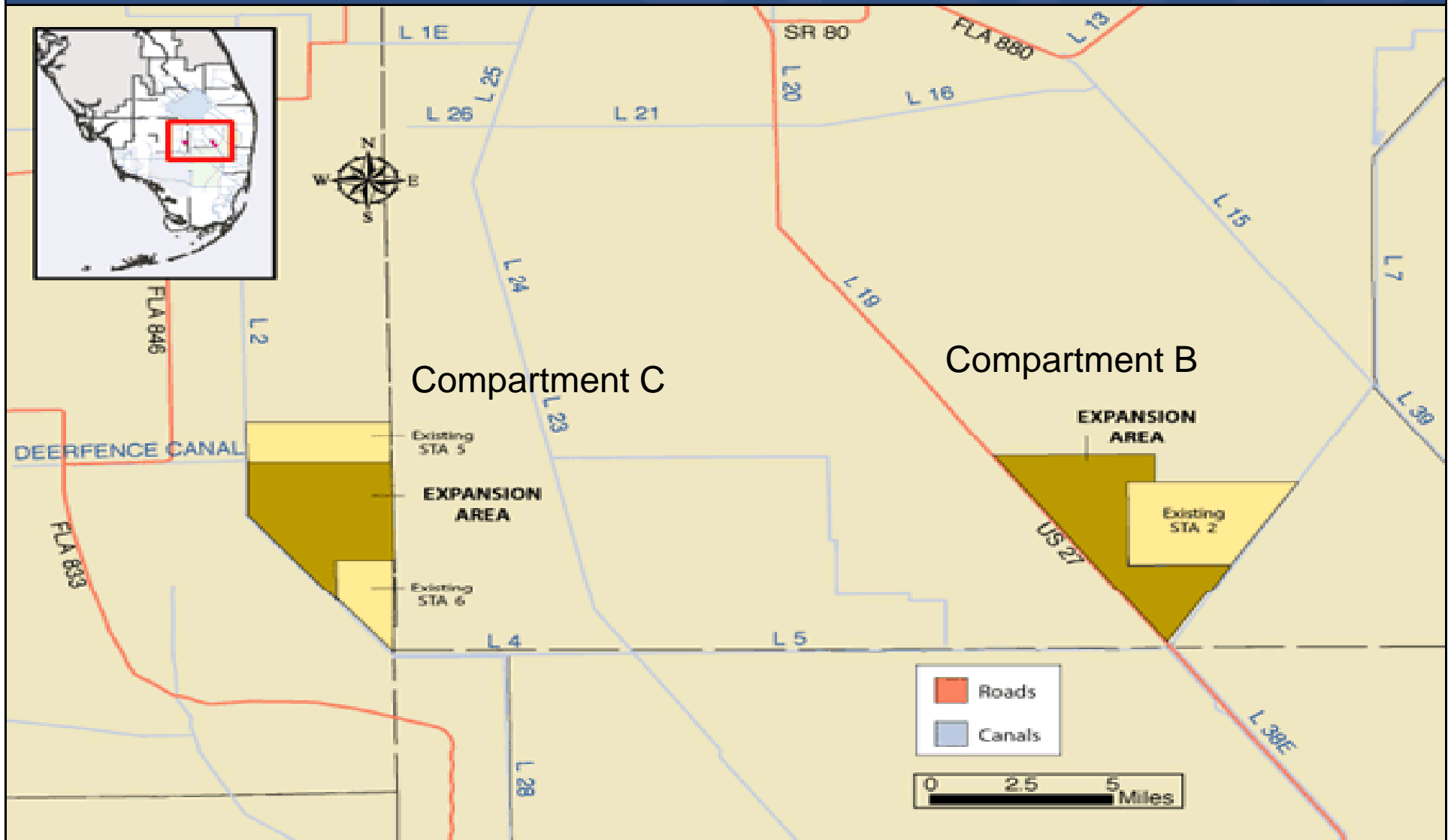
# Compartment B and Compartment C Buildouts Stormwater Treatment Areas Construction Update

**Quarterly Communications Meeting on the  
Long-Term Plan for Achieving Water Quality Goals for the  
Everglades Protection Area Tributary Basins**

**August 25, 2011**

*Octavio Castillo, P.E., Project Manager  
Engineering and Construction Bureau  
South Florida Water Management District*

# Location of Compartments B and C



## Basis and Purpose

- Component of the Everglades Construction Project and the Everglades Protection Area Tributary Basins Long-Term Plan for Achieving Water Quality Goals (Long-Term Plan)
- Included in the 10-Year Strategic Plan and the Current Annual Plan
- Assist with Redistribution of Flows and Loads in the Stormwater Treatment Area (STA) System to Achieve Optimal Performance



## Compartment B Buildout

- Accomplishments to date:
  - Completed Final Design - STA, Pump Stations, G-434 & G-435 Bridges and L-6 Canal Modifications
  - Completed Pump Equipment Procurement Contract
  - Received Construction Permits
  - Continued Construction – North and South Buildout STAs
    - Issued Notice to Proceed (NTP) June 1, 2009 for North and South Buildouts
    - Achieved Flow Capable Milestone for the North & South Buildout STAs - December 2010
  - Continued Construction – G-435, G-434 and G-436 Pump Stations
    - Issued NTP September 14 & 17, 2009
    - Completed Superstructure at G-435, G-434 & G-436 Pump Stations
    - Installed Pumping Equipment
  - Completed Construction – Bridges at G-434 & G-435
  - Achieved Substantial Completion on North Buildout STA on July 16, 2011



## Compartment B Buildout

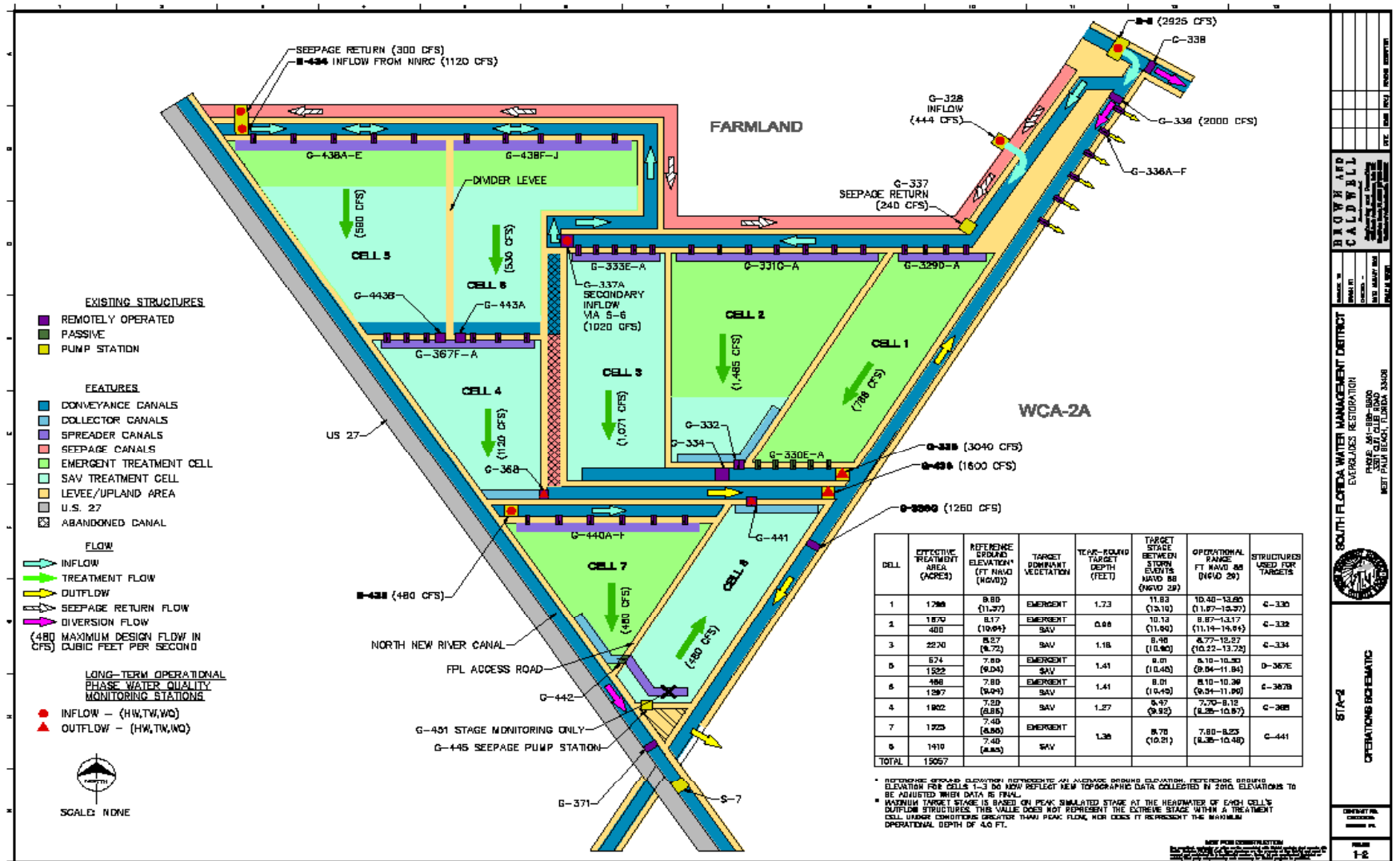
### ■ What's next:

- Continue Construction of South Buildout STA – Electric and Communications
- Continue Construction of G-434, G-435, and G-436 Pump Stations

### ■ Construction Completion Schedule

- |                                       |                 |
|---------------------------------------|-----------------|
| • South Buildout STA                  | October 9, 2011 |
| • North Buildout STA                  | October 2011    |
| • G-434, G-435, & G-436 Pump Stations | May 2, 2012     |

# Compartment B Buildout



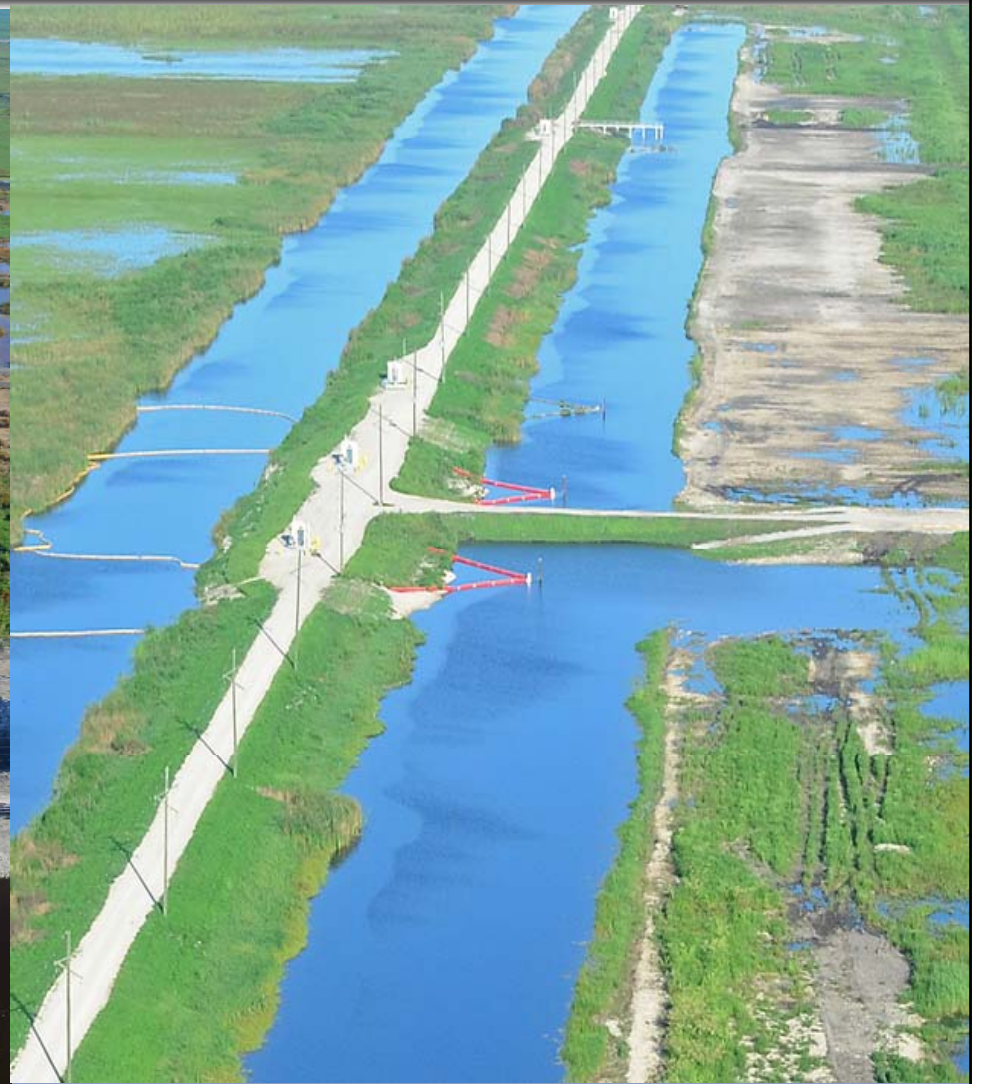


# EAA Compartment B STA North Buildout North Levees – April 2011 and July 2011



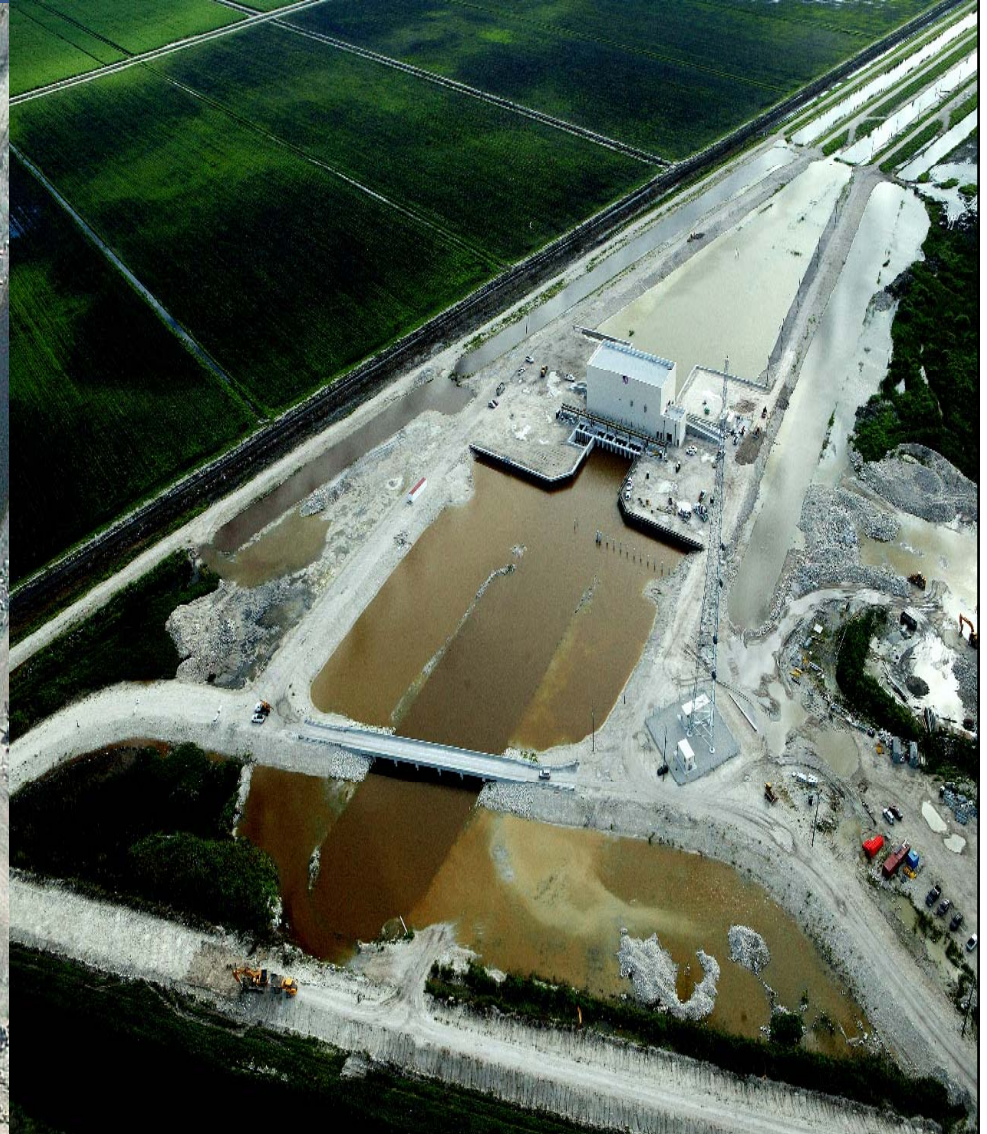


# EAA Compartment B STA North Buildout G-443A & B – April 2011 and July 2011



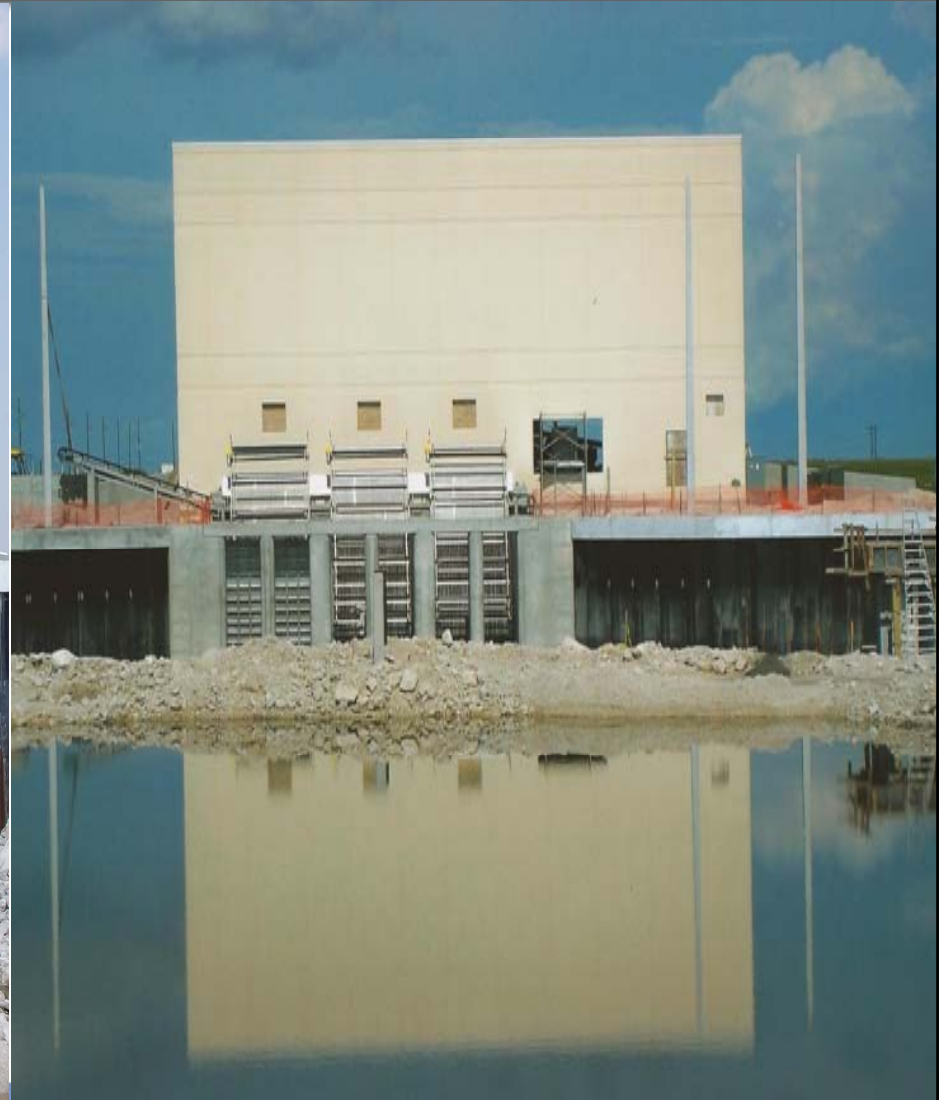


# G-434 Pump Station April 2011 and July 2011





# G-435 Pump Station April 2011 and July 2011



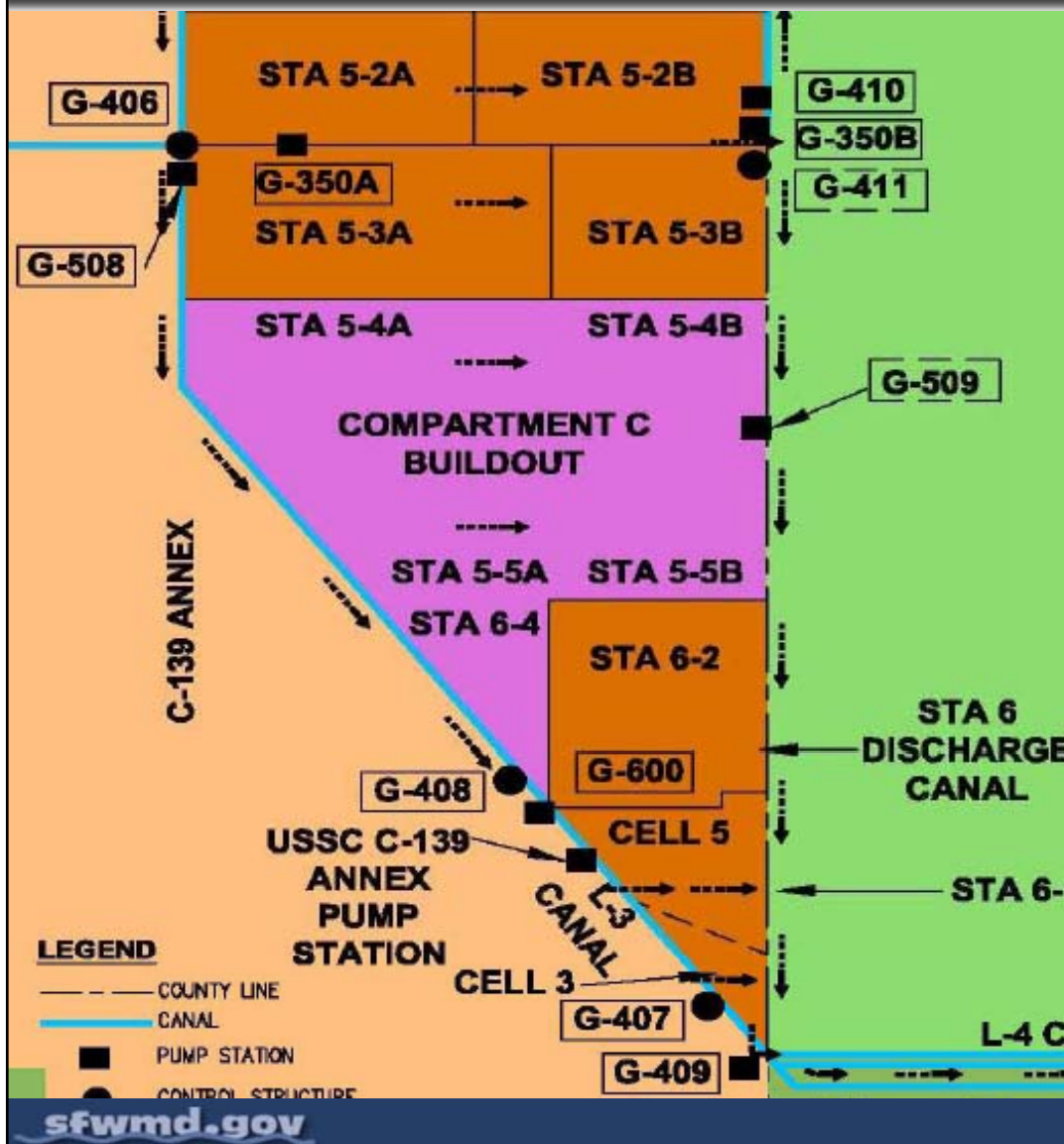


# G-436 Pump Station April 2011 and July 2011



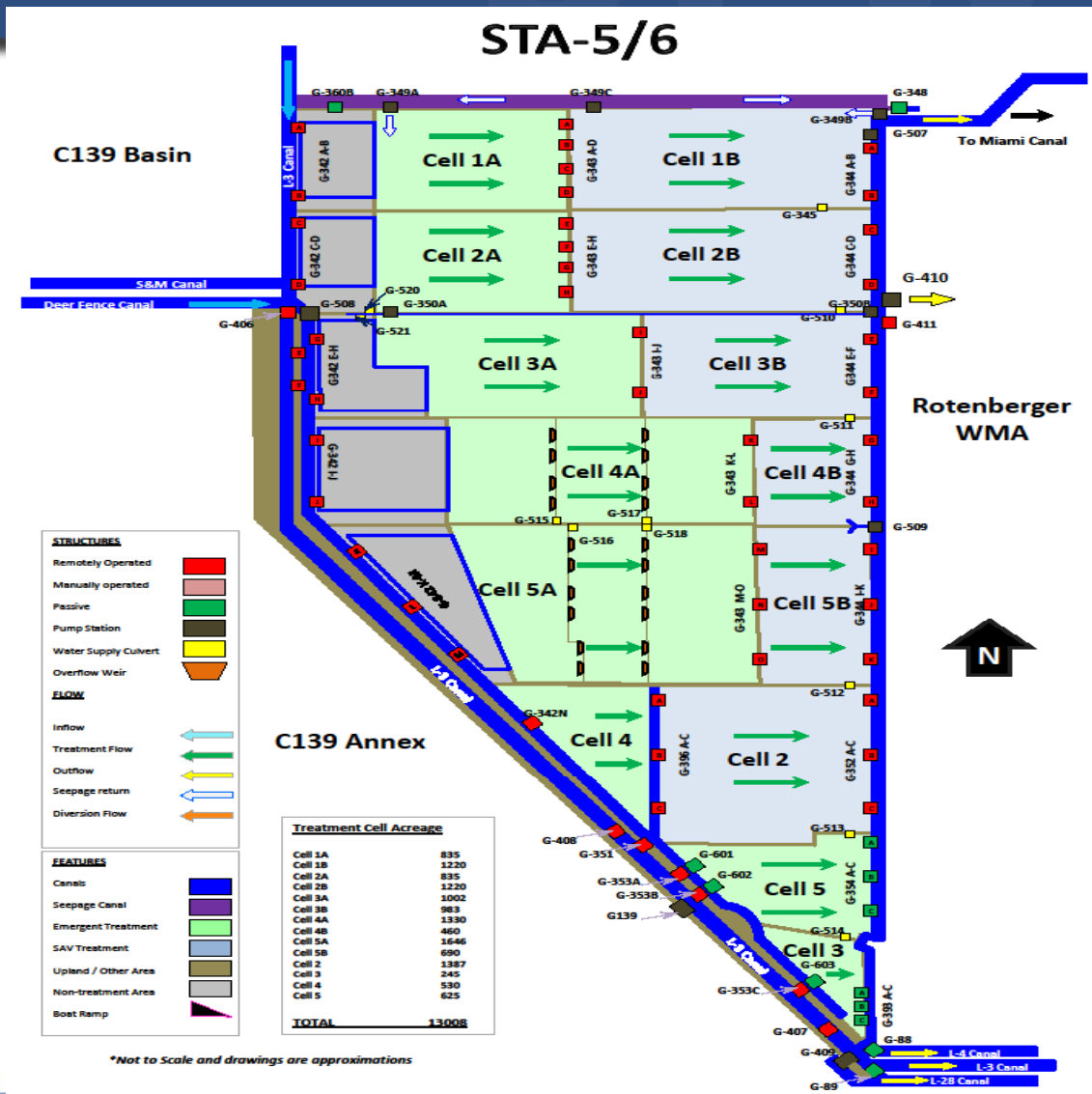


# Compartment C Buildout



- East of Feeder Canal, L-28 and C-139 Basins
- West of Rotenberger Wildlife Management Area

# Compartment C Buildout





## Compartment C Buildout

- Accomplishments to date:
  - Completed Final Design-STA
  - Completed Final Design-Pump Station
  - Completed Pump Equipment Procurement Contract
  - U.S. Army Corps of Engineers Completed Record of Decision and Compartment C 404 Permit Prior to March 2009 Governing Board
  - U.S. Department of Interior Land Use Change Received
  - Continued Construction of STA
    - Issued NTP April 6, 2009
    - Achieved Flow Capable Milestone December 2010
    - Completed Construction of Gates and Structures
  - Continued Construction of G-508 Pump Station
    - Issued NTP September 1, 2009
    - Installed Diesel and Electric Pumps

## Compartment C Buildout

### ■ What's Next:

- Continue Construction of STA – Electric and Communication
- Continue Construction of G-508 Pump Station

### ■ Construction Completion Schedule

- STA September 18, 2011
- G-508 Pump Station March 1, 2012

# EAA Compartment C STA Buildout G-408 – April 2011 and July 2011





## EAA Compartment C STA Buildout G-509 Pump Station – April 2011 and July 2011





# G-508 Pump Station – April 2011





## G-508 Pump Station – July 2011





# Questions?

