



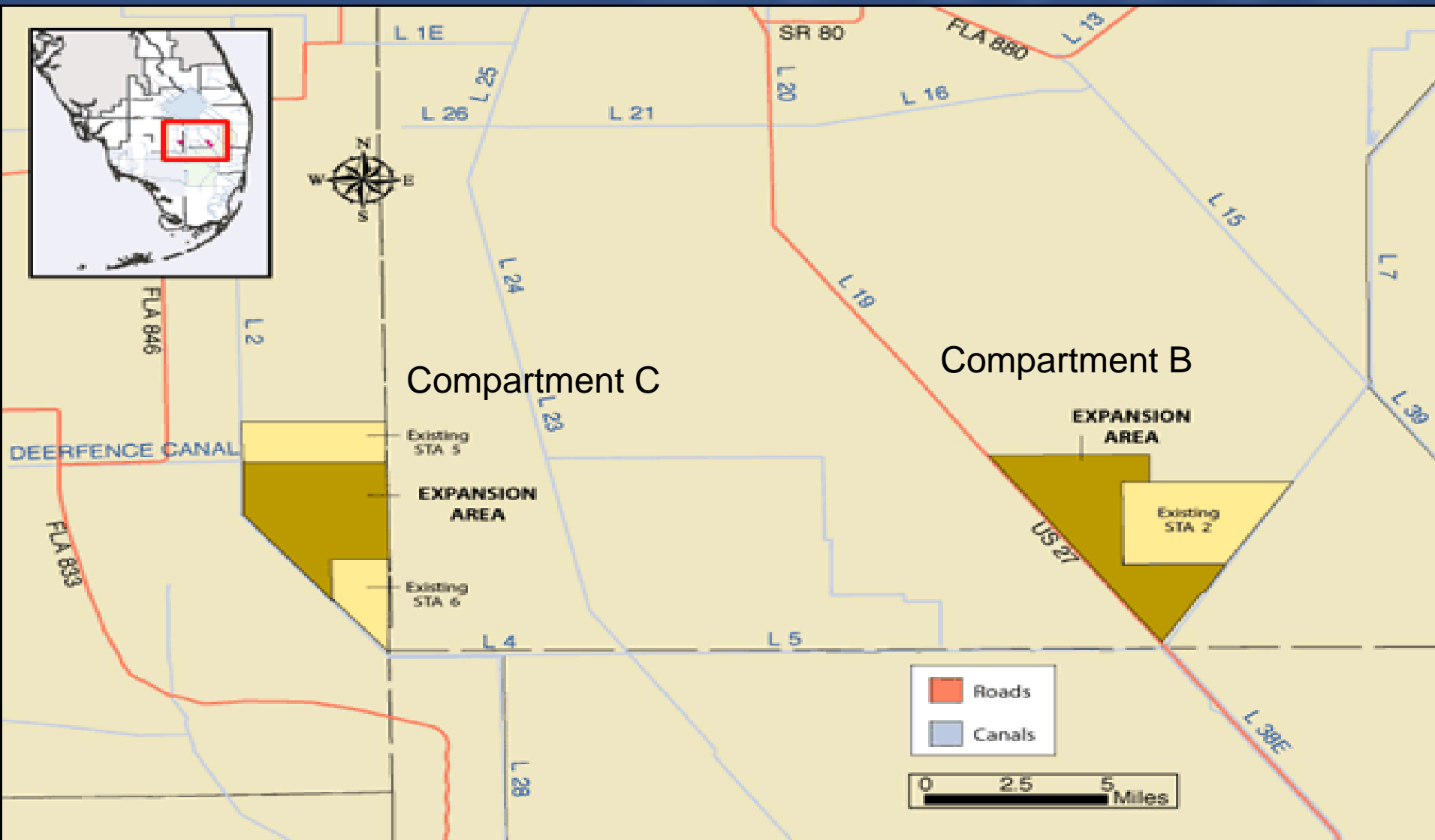
Compartment B Buildout and Compartment C Buildout Stormwater Treatment Areas Update

**Quarterly Communications Meeting on the
Long-Term Plan for Achieving Water Quality Goals for the
Everglades Protection Area Tributary Basins**

June 16, 2010

*Octavio Castillo, P.E., Project Manager
Everglades Restoration Engineering Department
Ocastill@sfwmd.gov*

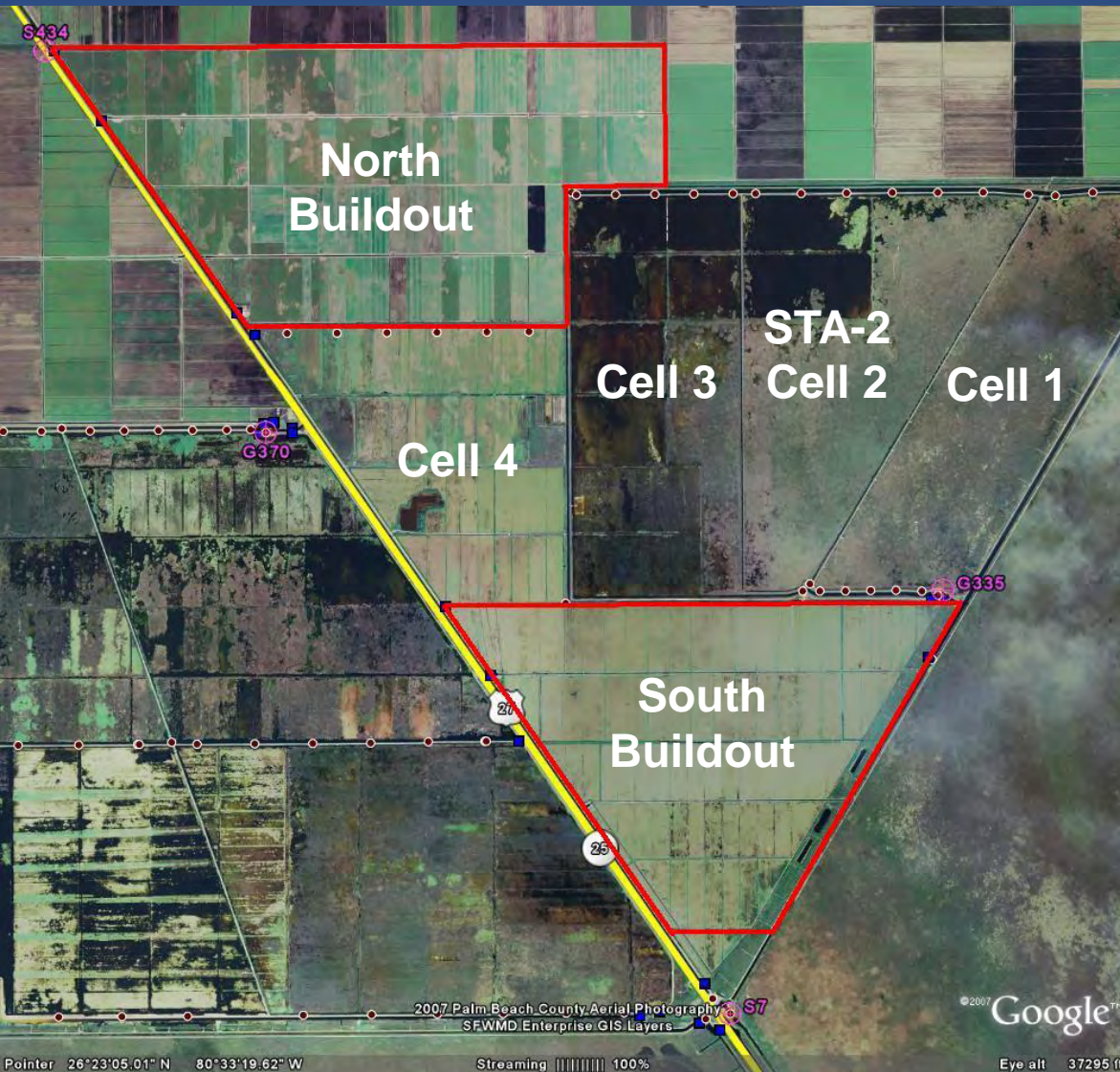
Location of Compartments B and C



Basis and Purpose

- Component of the Everglades Construction Project and the Everglades Protection Area Tributary Basins Long-Term Plan for Achieving Water Quality Goals (Long-Term Plan)
- Included in the 10-Year Strategic Plan and the current Annual Plan
- Assist with Redistribution of Flows and Loads in the Stormwater Treatment Area (STA) System to achieve optimal performance

Compartment B Buildout



- East of U.S. 27 and STA-3/4
- West of STA-2

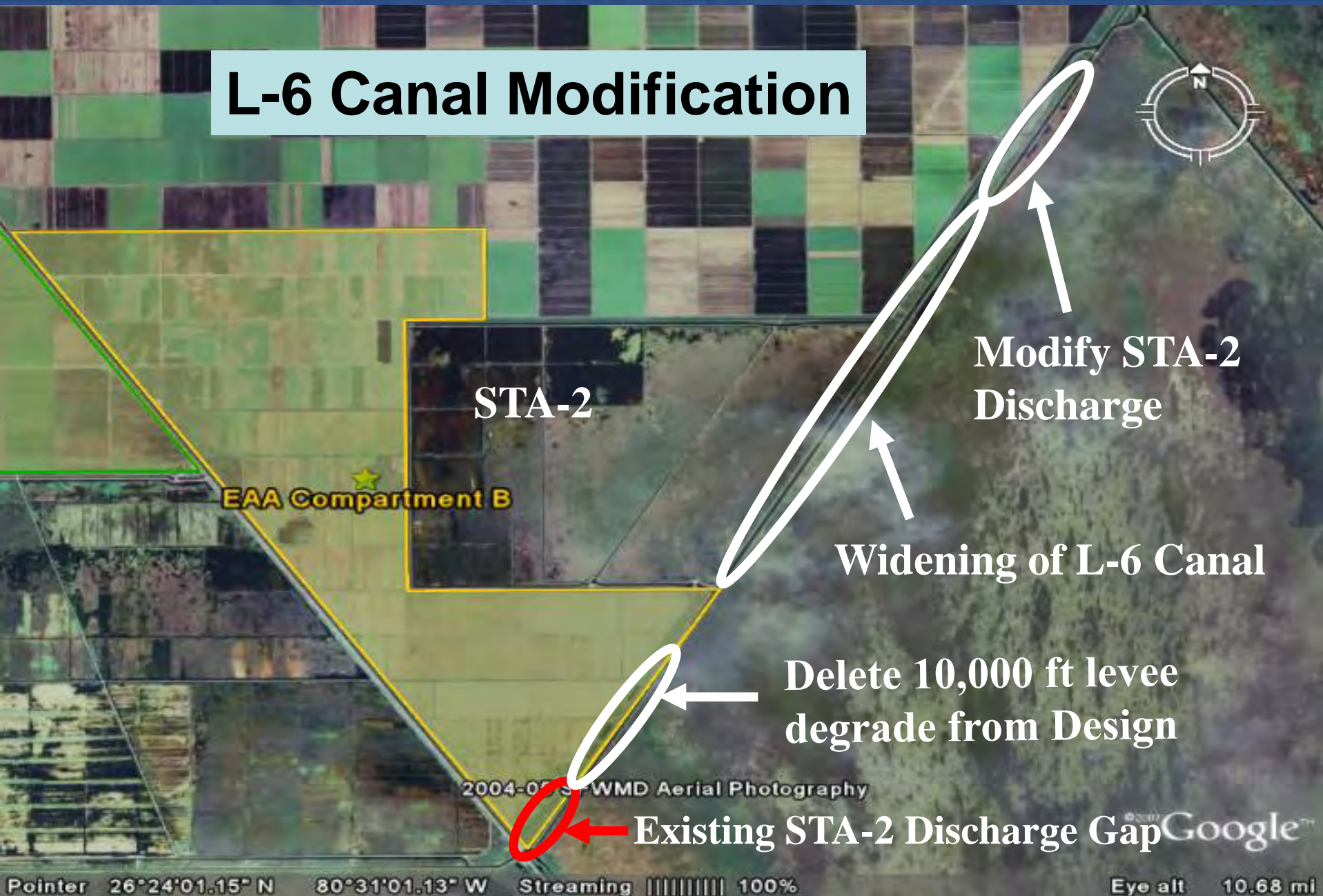
Compartment B Buildout

- Accomplishments to date:
 - Completed Final Design - Civil Works
 - Completed Final Design - Pump Stations
 - Completed Pump Equipment Procurement Contract
 - Construction Permits Received
 - Started Construction – Civil Works
 - Issued Notice to Proceed (NTP) June 1, 2009 for North and South Buildouts
 - Started Construction – G-435, G-434 and G-436 Pump Stations
 - Issued NTP September 14 & 17, 2009

Compartment B Buildout

- What's next:
 - Re-design of project discharge at L-6 Canal to Water Conservation Area 2A
 - Pump Equipment Procurement Delivery
 - Continue construction of Civil Works
 - Continue construction of G-434, G-435, and G-436 pump stations
 - Start construction of Inflow Canal Bridges at G-434 and G-435
- Construction Completion
 - Flow Capable Civil Works – December 31, 2010
 - Permanent Pump Stations February 28, 2012

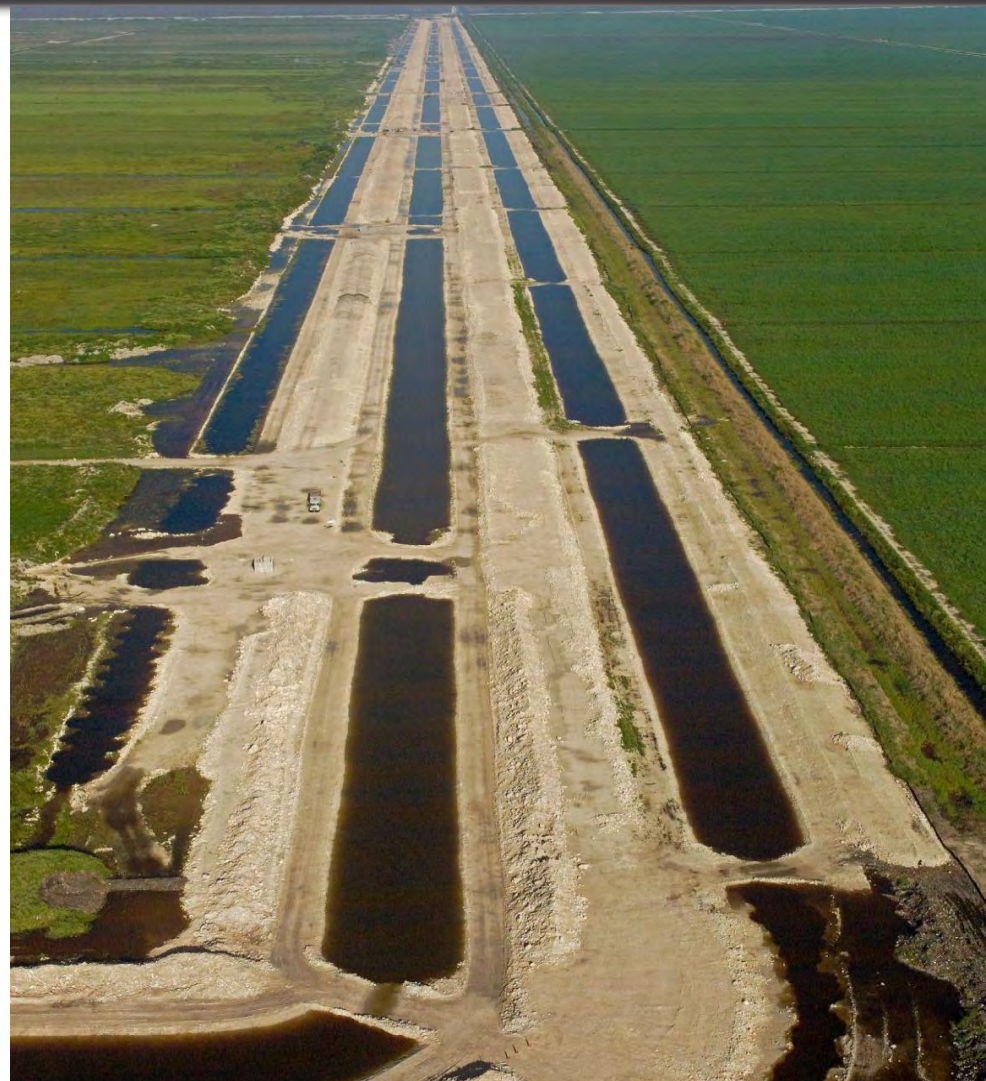
L-6 Canal Modification



L-6 Canal Modification

- Conceptual Design received July 2, 2009
- Final Geotechnical Report received Oct.14, 2009
- Intermediate Design received Sept.18, 2009
- Pre-Final Design received December 21, 2009
- Final Design due **July, 2010**
- **Bid Opening – DELAY due to USACE 408 process review regarding flood protection prior to issue of 404 permit**

North Buildout – looking west

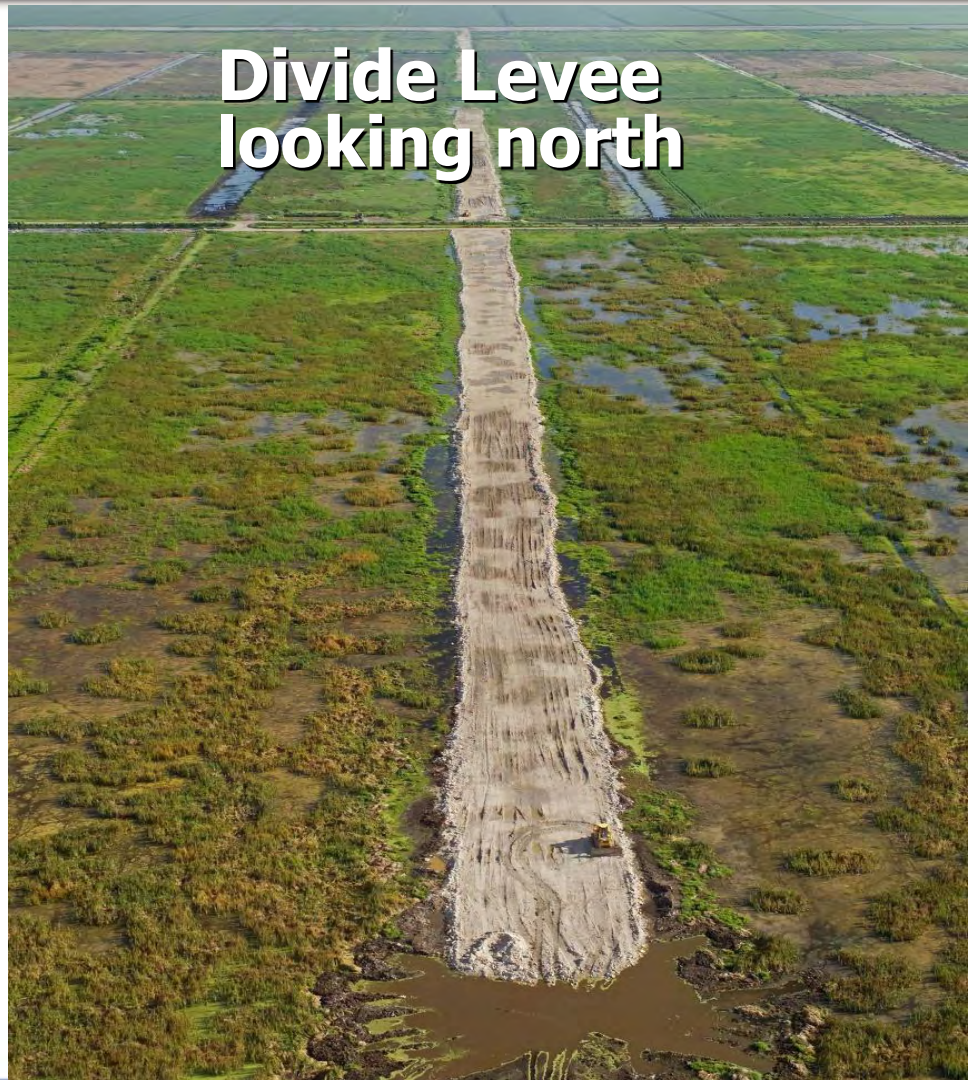


North Buildout

**Inflow Canal
looking north**



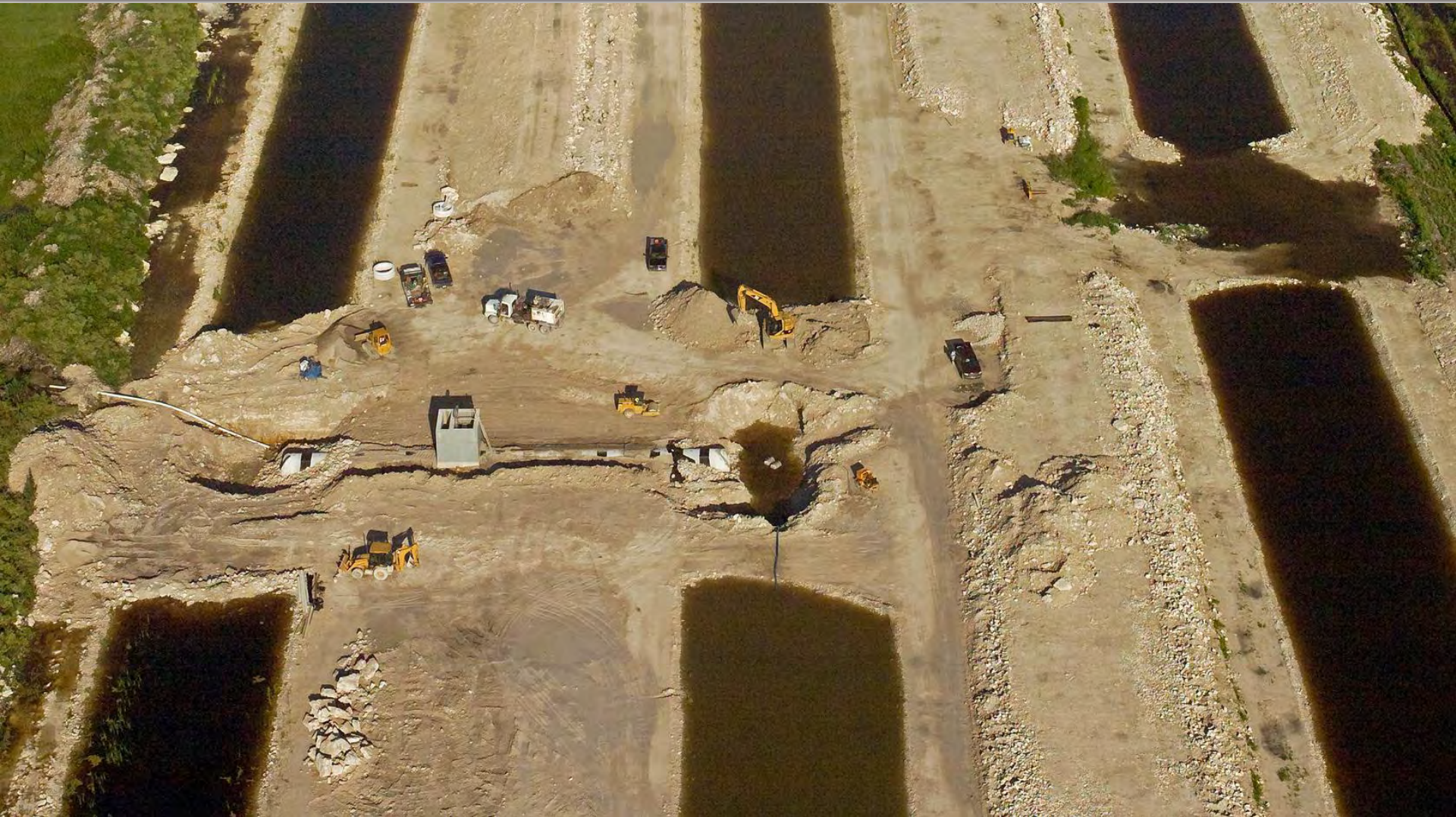
**Divide Levee
looking north**



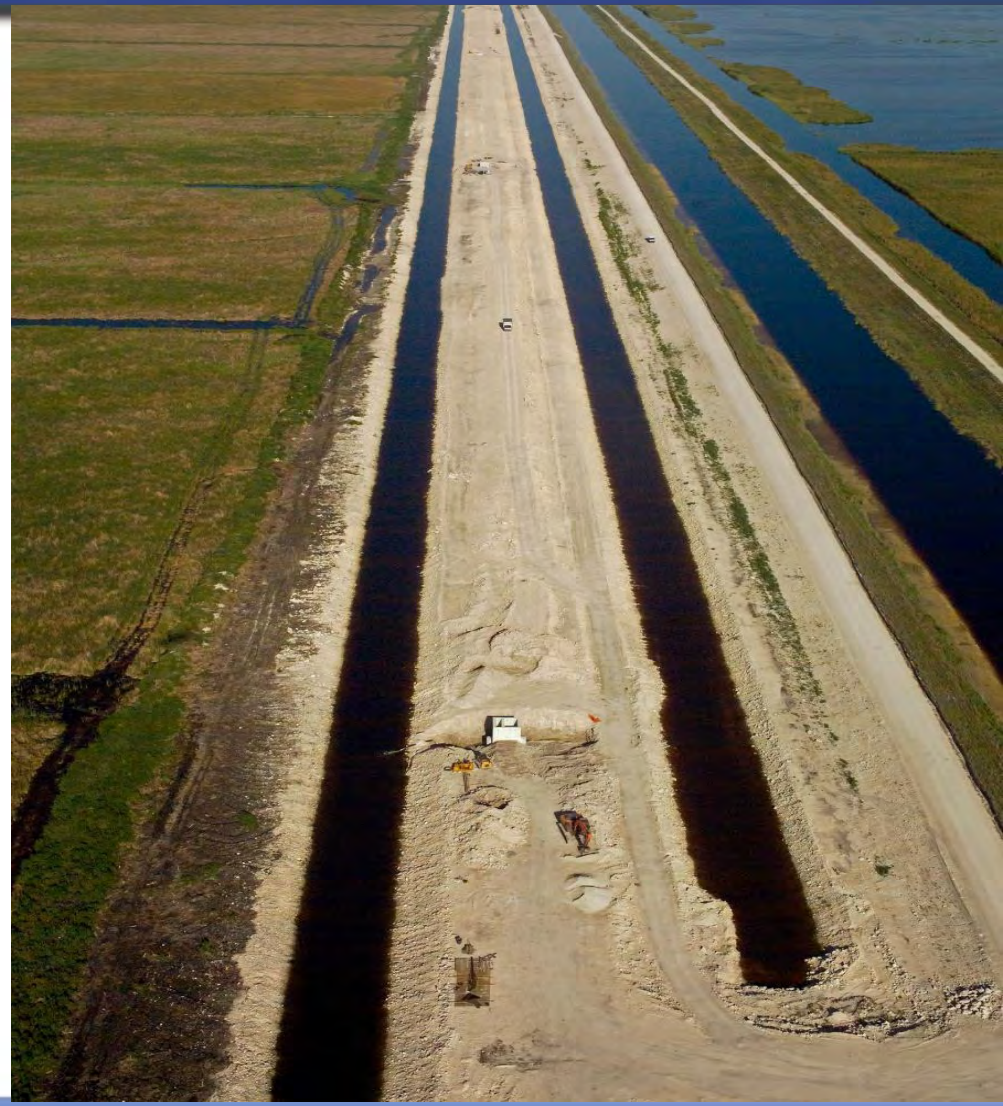
G-443A and G-443B at Cell 4



G-438I



South Buildout – looking west

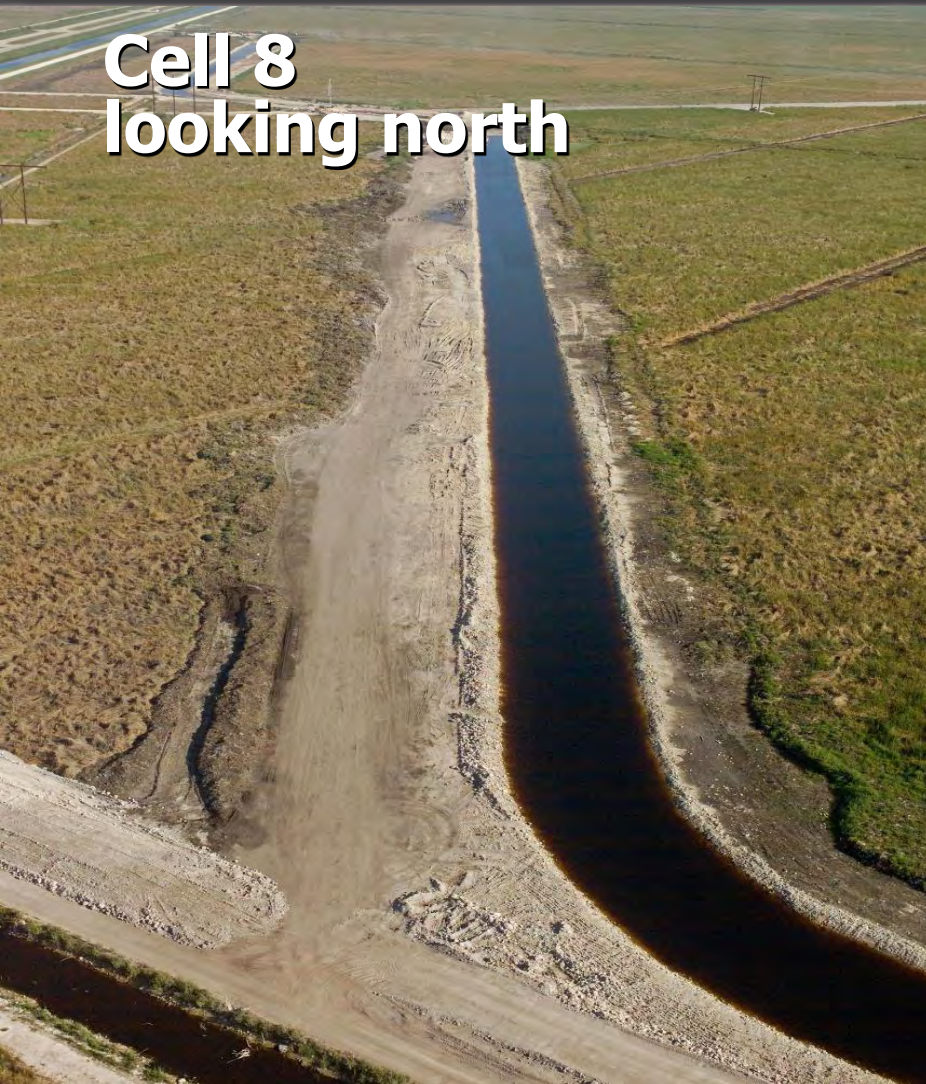


G-440D

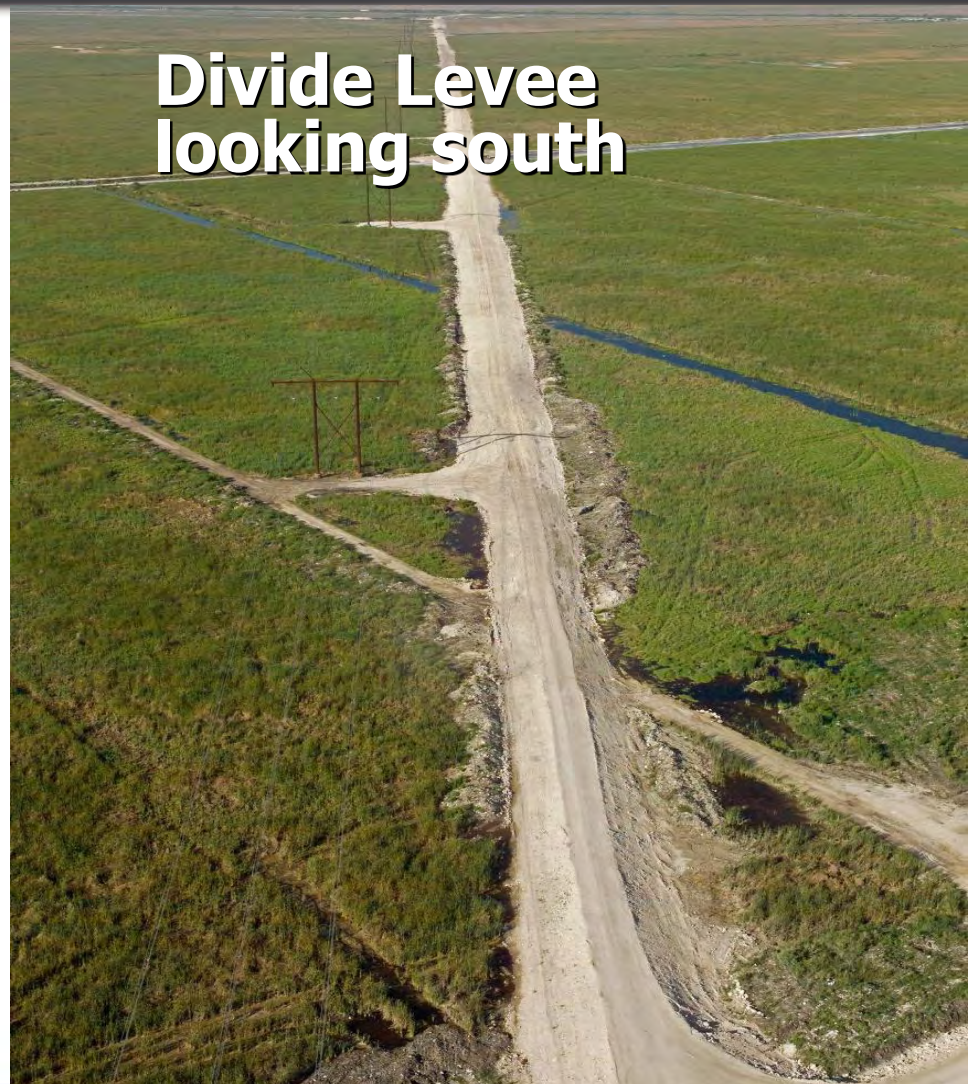


South Buildout

Cell 8
looking north



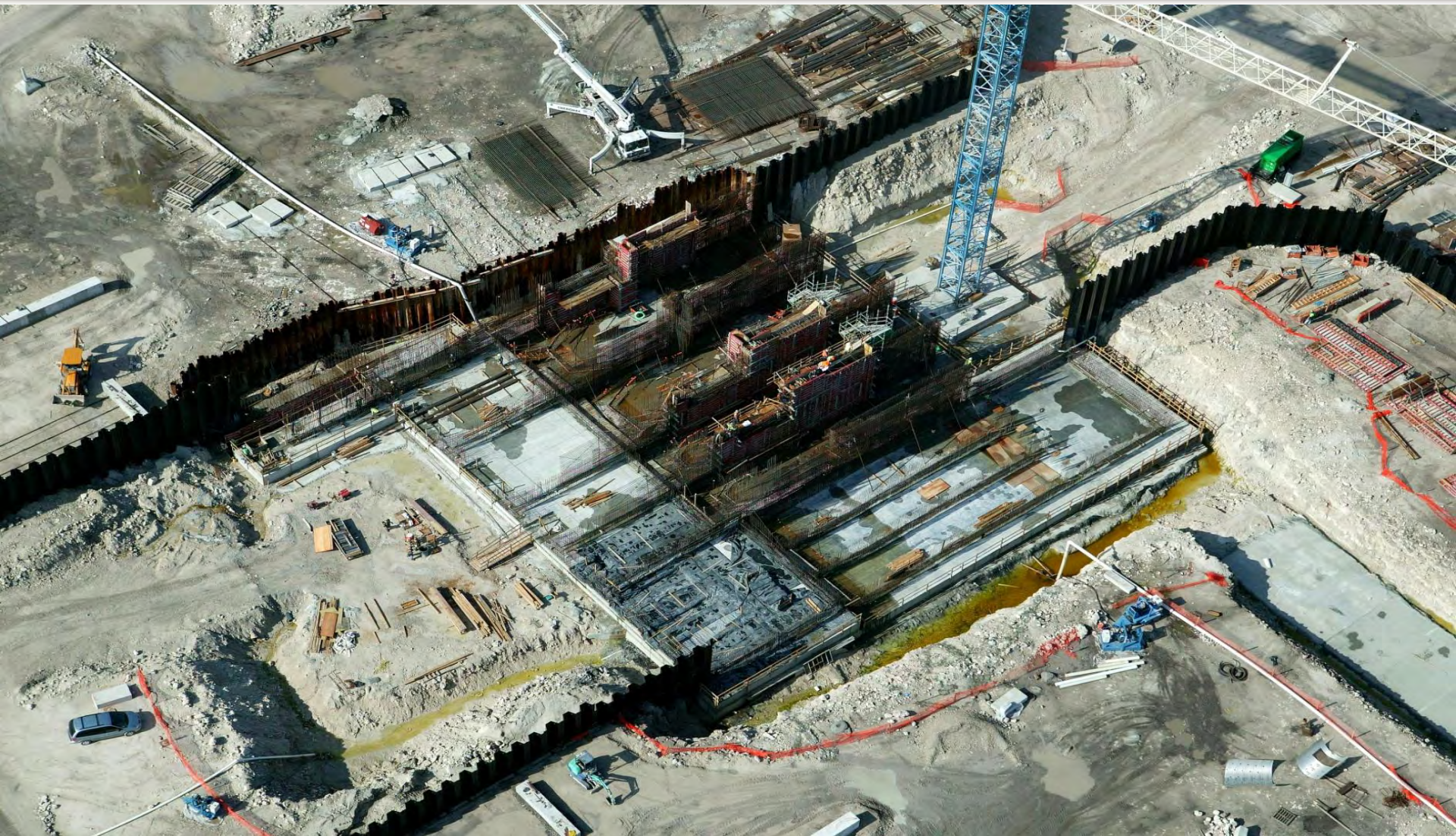
Divide Levee
looking south



G-442



G-434 Pump Station



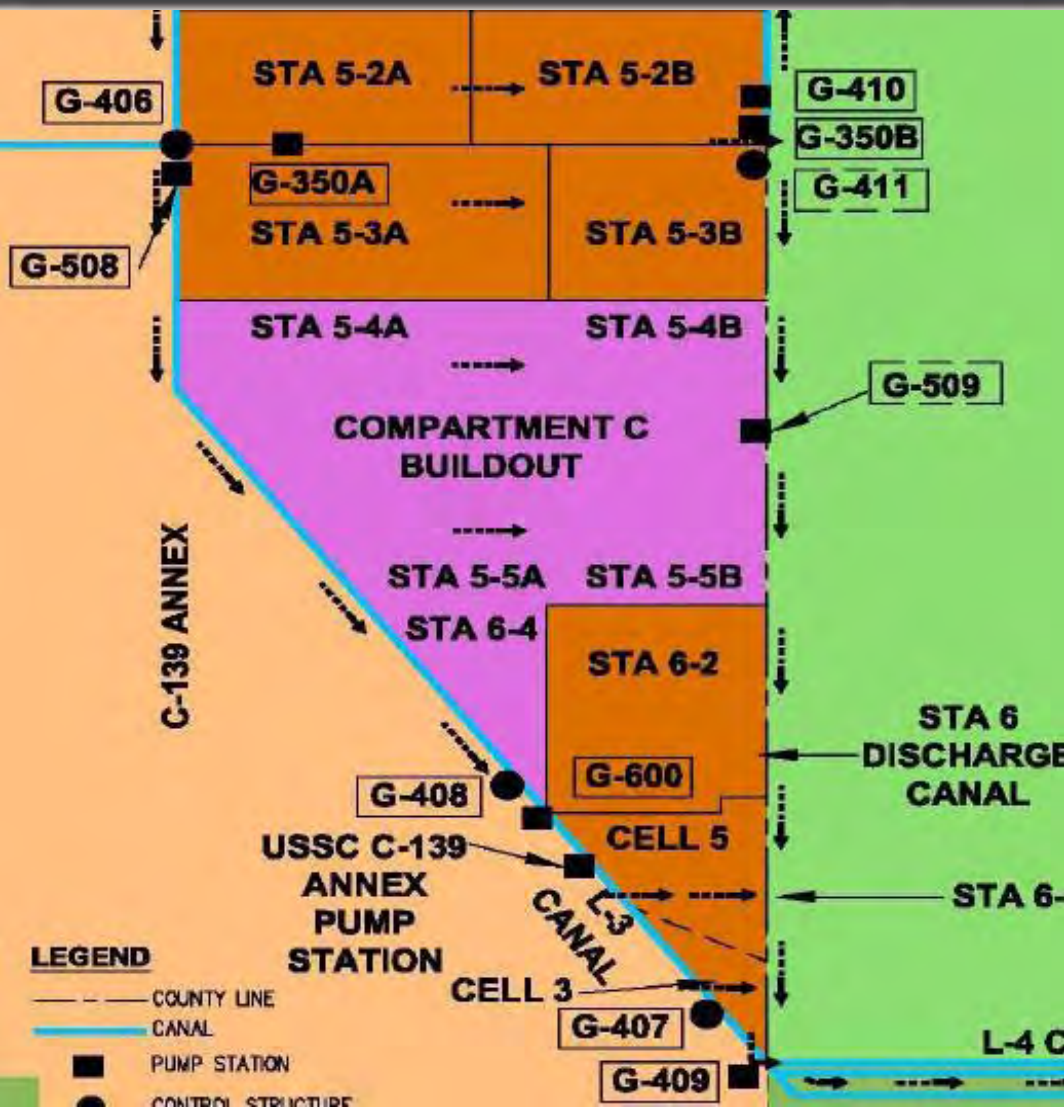
G-435 Pump Station



G-436 Pump Station



Compartment C Buildout



- East of Feeder Canal, L-28 and C-139 Basins
- West of Rotenberger Wildlife Management Area

Compartment C Buildout

- Accomplishments to date:
 - Completed Final Design-Civil Works
 - Completed Final Design-Pump Station
 - Completed Pump Equipment Procurement Contract
 - U.S. Army Corps of Engineers completed Record of Decision and Compartment C 404 permit prior to March 2009 Governing Board
 - U.S. Department of Interior Land Use Change received
 - Started Construction of Civil Works
 - Issued NTP April 6, 2009
 - Started construction of G-508 pump station
 - Issued NTP September 1, 2009

Compartment C Buildout

- What's Next:
 - Pump Equipment Procurement Delivery
 - Continue construction of Civil Works
 - Continue construction of G-508 Pump Station
- Construction Completion
 - Flow Capable Civil Works December 31, 2010
 - G-508 Pump Station December 30, 2011

Compartment C Buildout



Compartment C Buildout



G-432N



G-343M



G-408



Intermediate Levee



Discharge Canal



G-508 Pump Station



G-508 Pump Station



Questions?

