



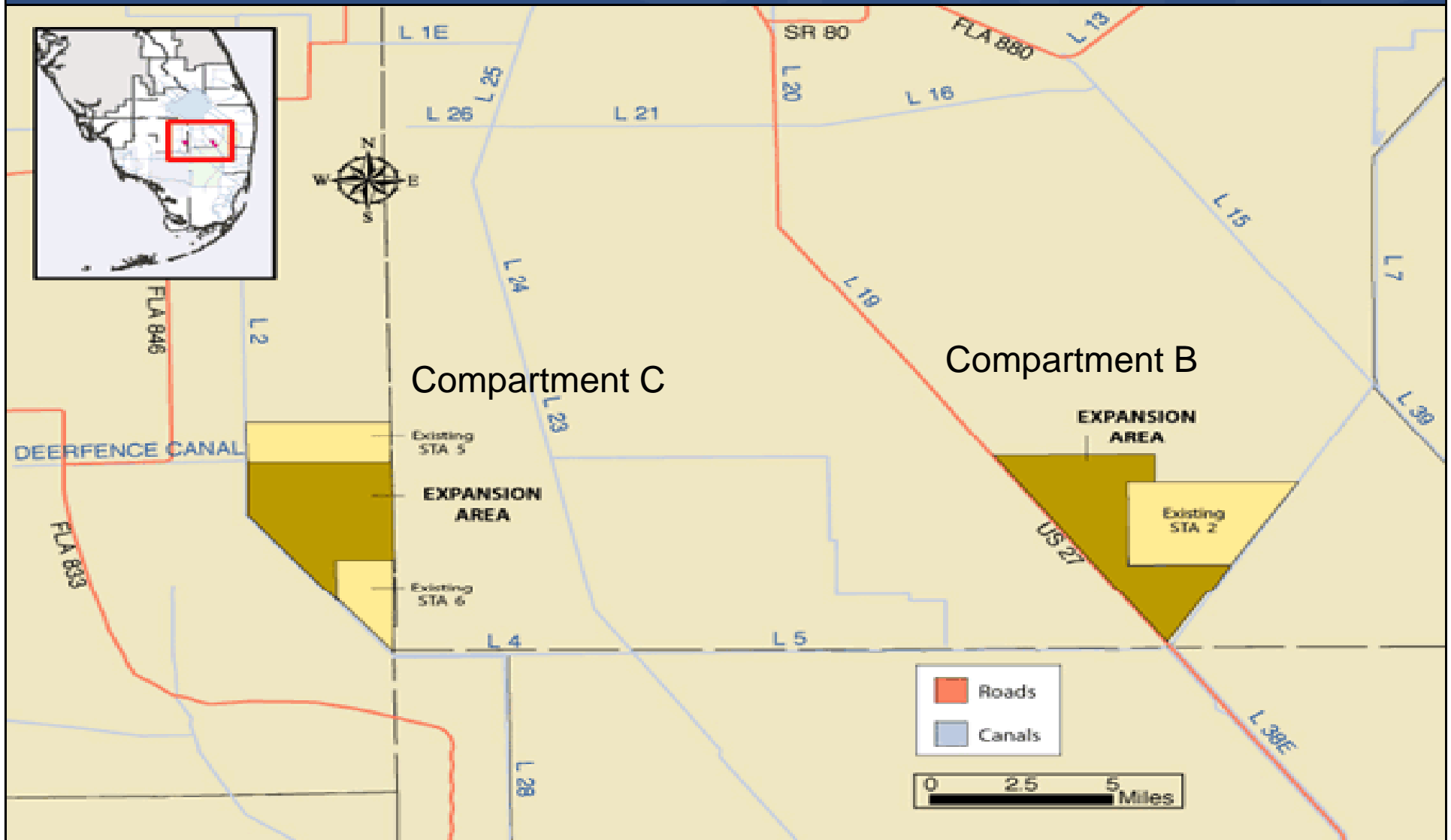
**Quarterly Communications Meeting on the Long-Term Plan for
Achieving Water Quality Goals for
Everglades Protection Area Tributary Basins**

November 15, 2011

**Compartment B and Compartment C Buildouts
Stormwater Treatment Areas
Construction Update**

*Matthew Alexander, P.E., Project Manager
Engineering and Construction Bureau
South Florida Water Management District*

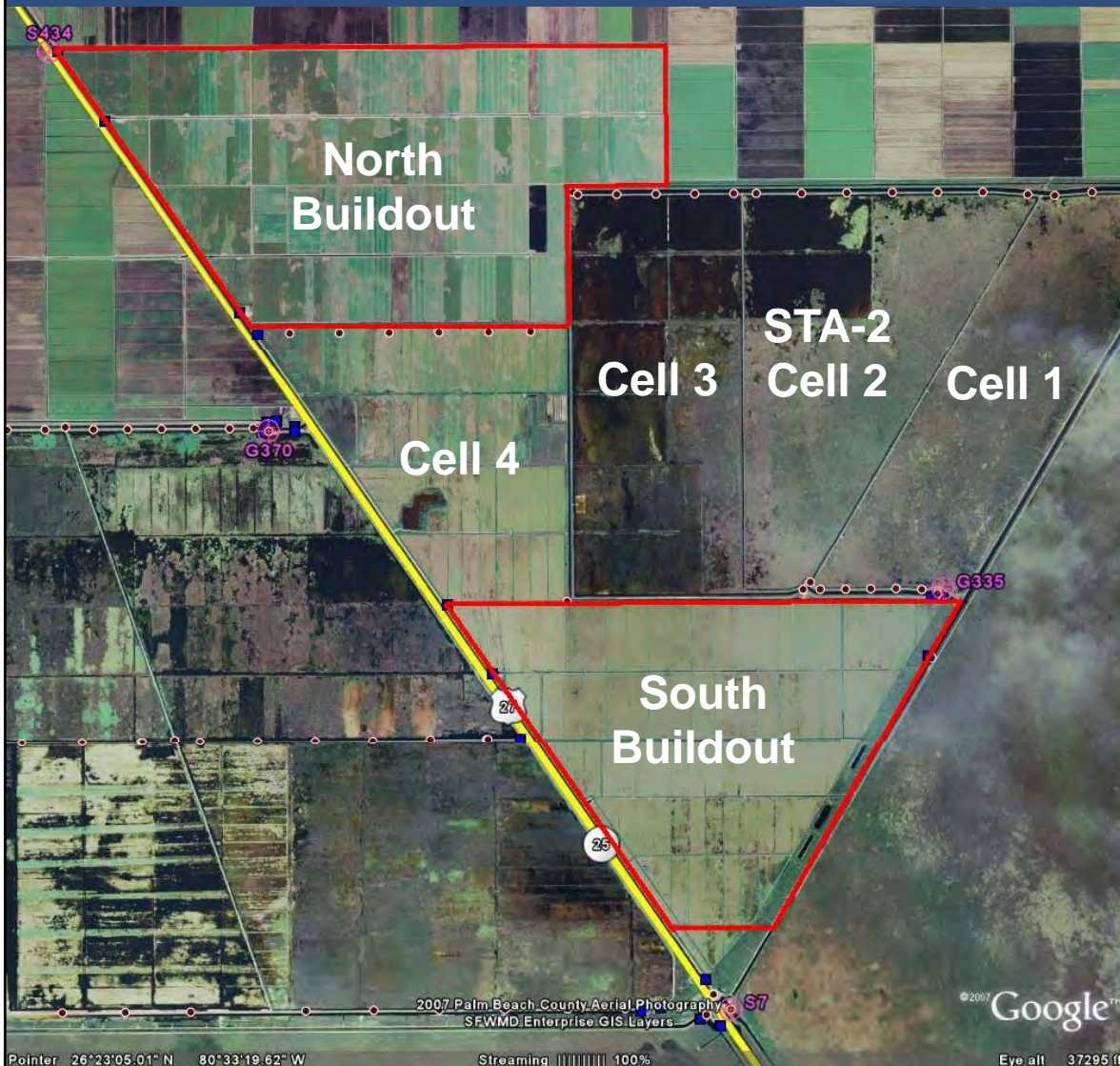
Location of Compartments B and C



Basis and Purpose

- Component of the Everglades Construction Project and the Everglades Protection Area Tributary Basins Long-Term Plan for Achieving Water Quality Goals (Long-Term Plan)
- Included in the 10-Year Strategic Plan and the Current Annual Plan
- Assist with Redistribution of Flows and Loads in the Stormwater Treatment Area (STA) System to Achieve Optimal Performance

Compartment B Buildout



- East of U.S. 27 and STA-3/4
- West of STA-2

Compartment B Buildout

- Accomplishments to date:
 - Completed Final Design - STA, Pump Stations, G-434 & G-435 Bridges and L-6 Canal Modifications
 - Completed Pump Equipment Procurement Contract
 - Received Construction Permits
 - Continued Construction – North and South Buildout STAs
 - Issued Notice to Proceed (NTP) June 1, 2009 for North and South Buildouts
 - Achieved Flow Capable Milestone for the North & South Buildout STAs - December 2010
 - Achieved Final Completion on North Buildout STA on **Oct 22, 2011.**
 - Continued Construction – G-435, G-434 and G-436 Pump Stations
 - Issued NTP September 14 & 17, 2009
 - Completed Superstructure at G-435, G-434 & G-436 Pump Stations
 - Installed Pumping Equipment
 - Completed Construction – Bridges at G-434 & G-435

Compartment B Buildout

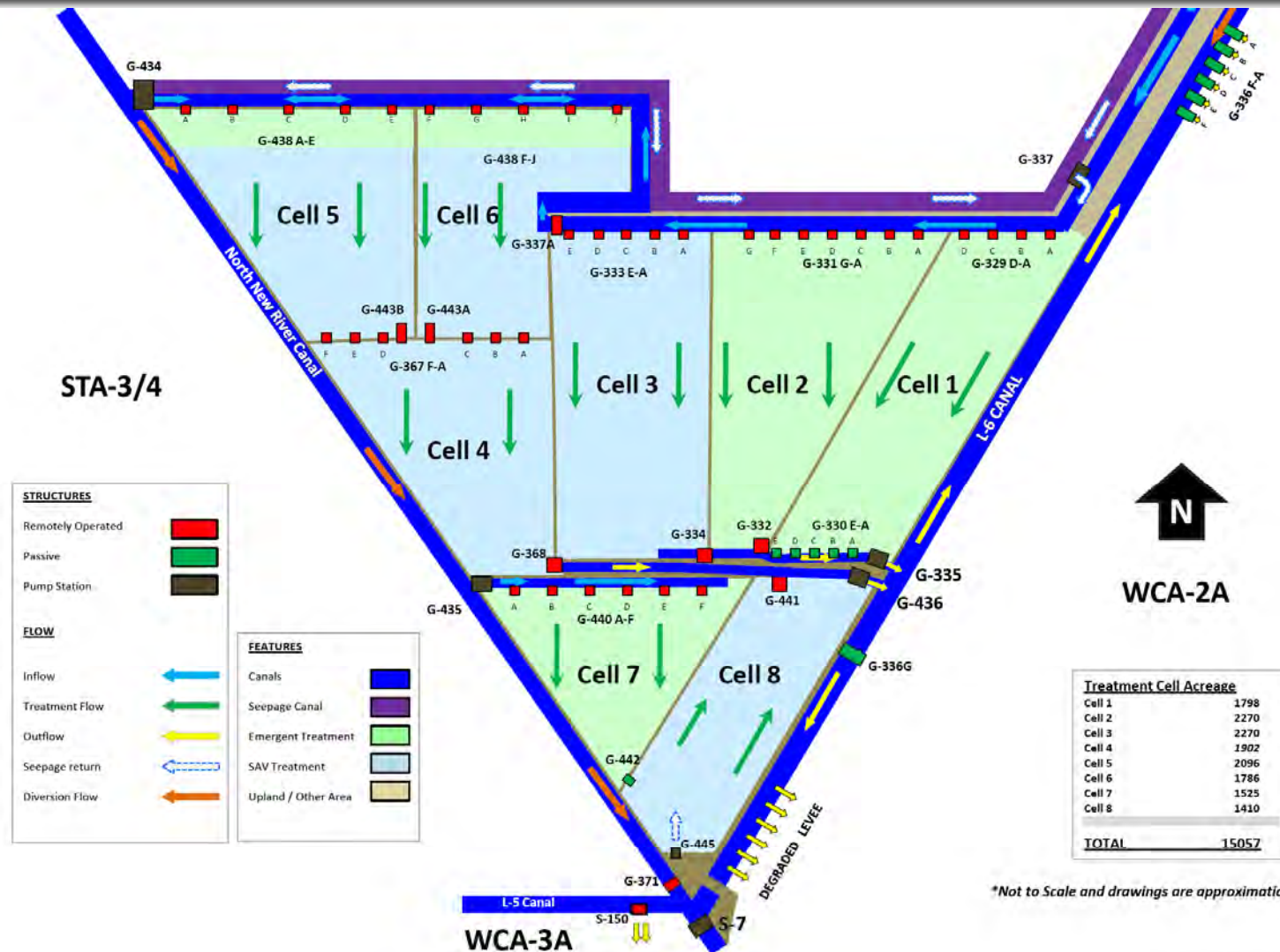
- What's next:

- Continue Construction of G-434, G-435, and G-436 Pump Stations

- Construction Completion Schedule

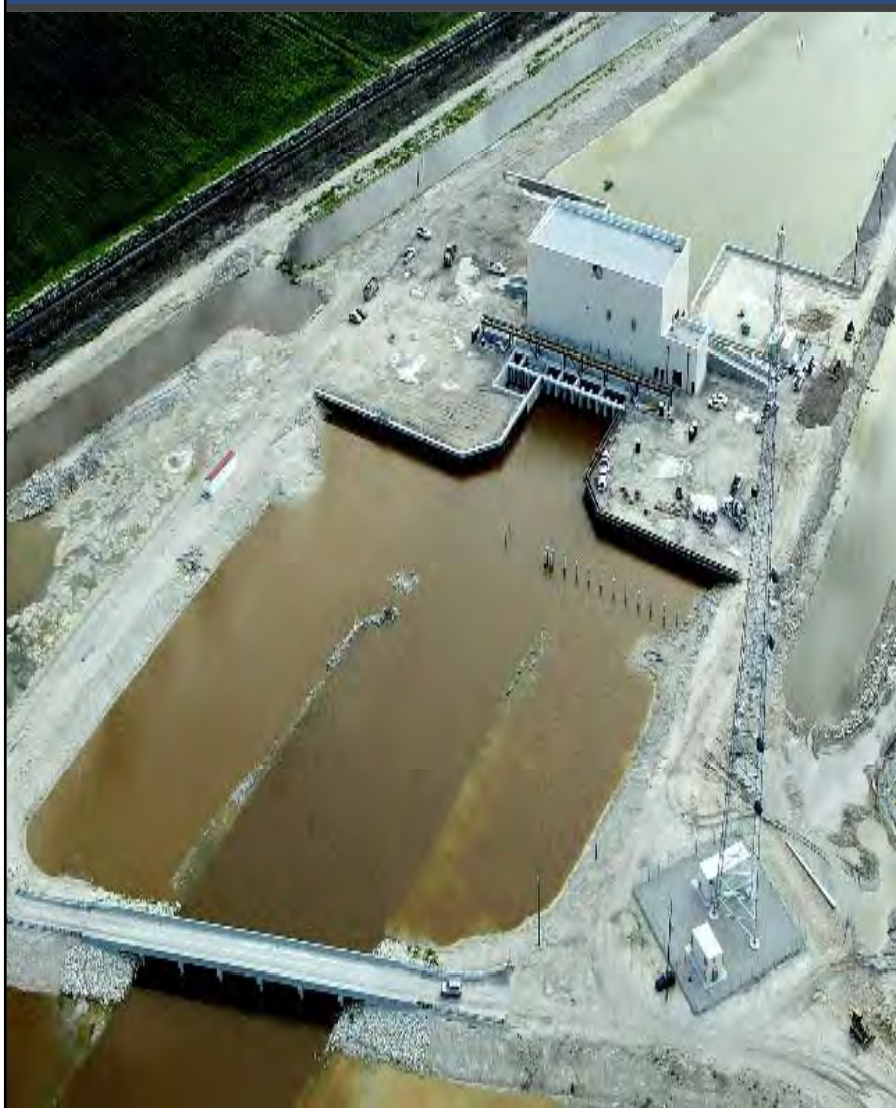
- | | |
|--|---------------|
| • Final Completion of South Buildout STA | December 2011 |
| • G-435 pump station | January 2012 |
| • G-434, G-435, & G-436 Pump Stations | May 2012 |

Compartment B Buildout



G-434 Pump Station

July 2011 September 2011



G-435 Pump Station September 2011



G-435 Pump Test September 2011

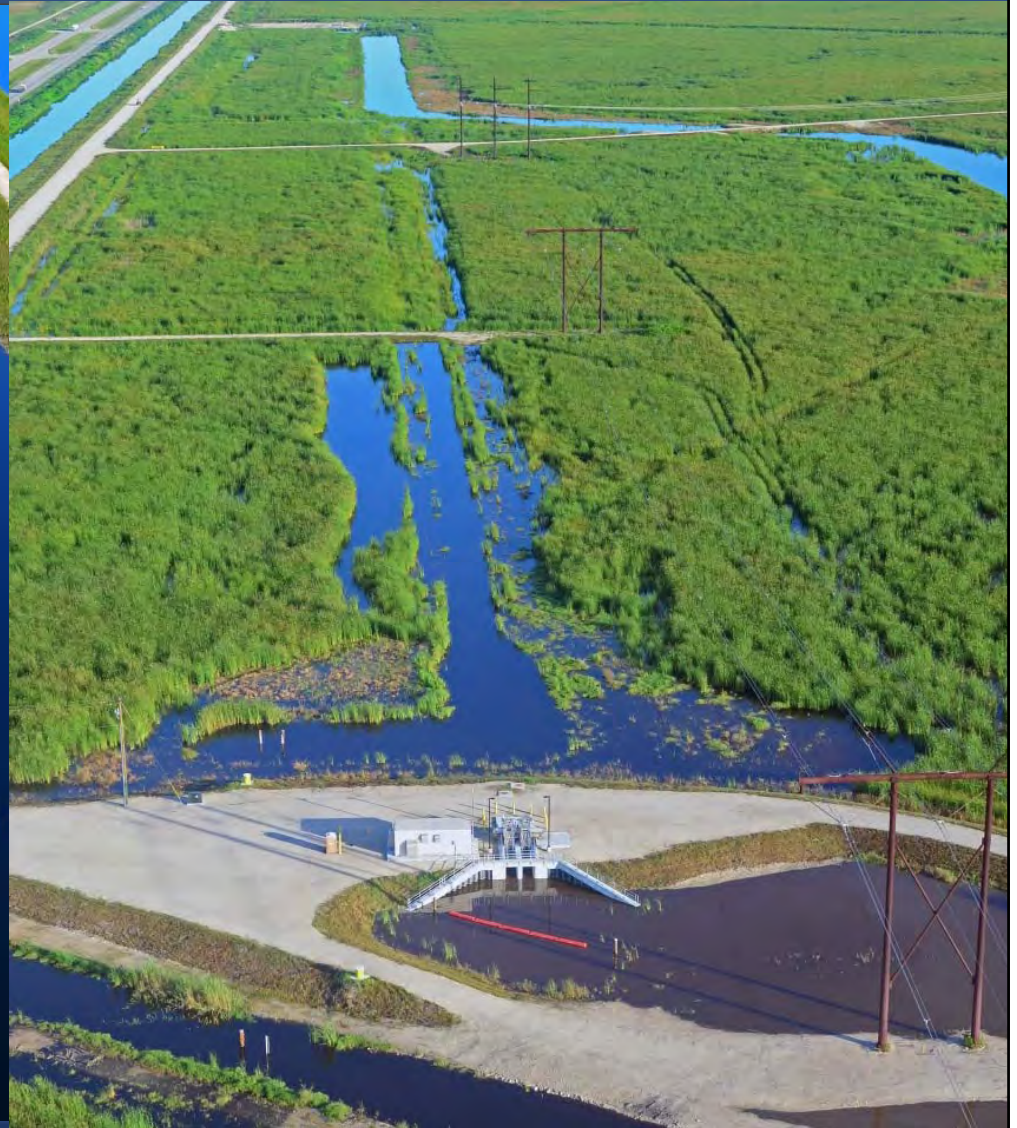


G-436 Pump Station

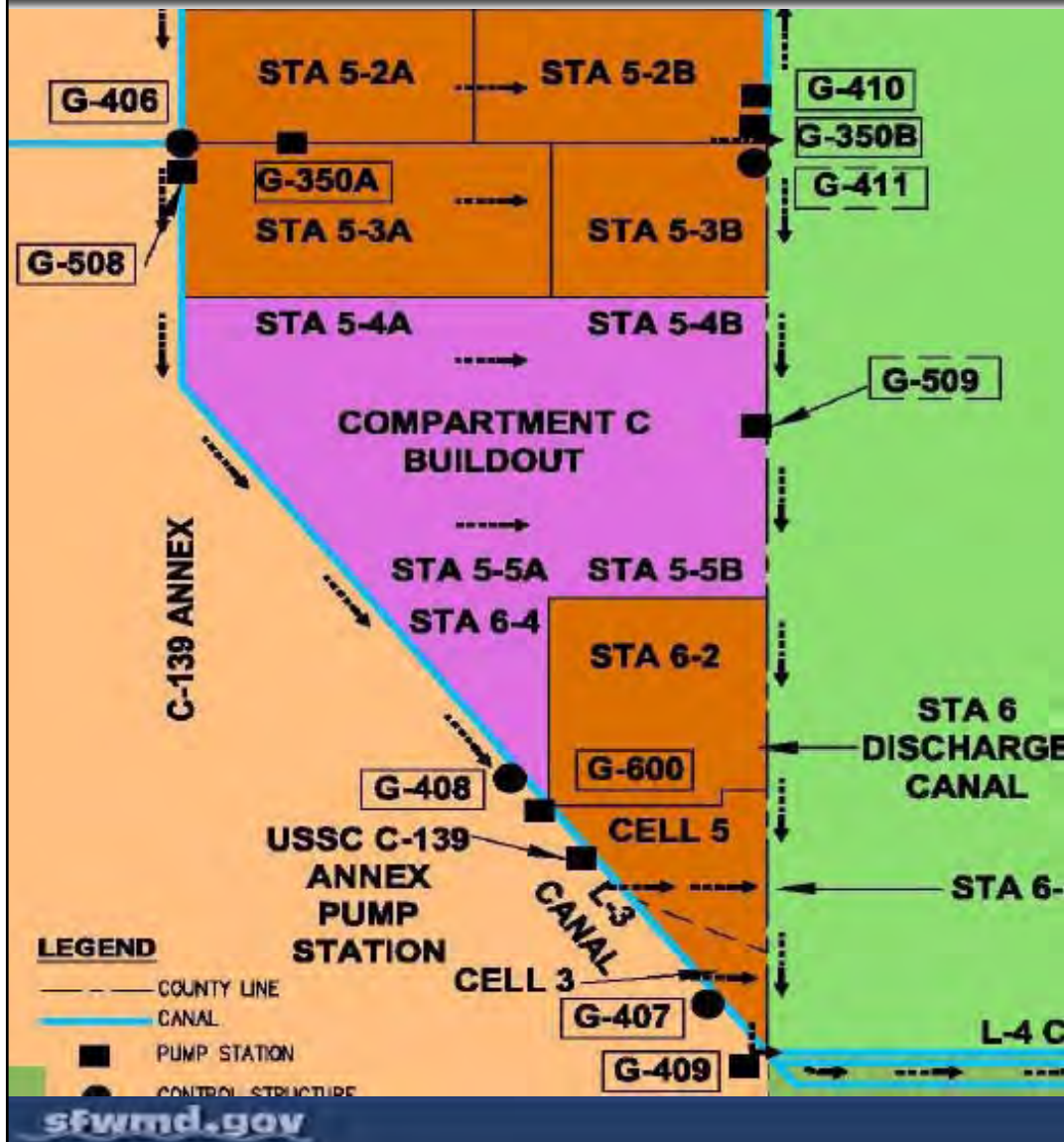
July 2011 September 2011



South Buildout STA September 2011



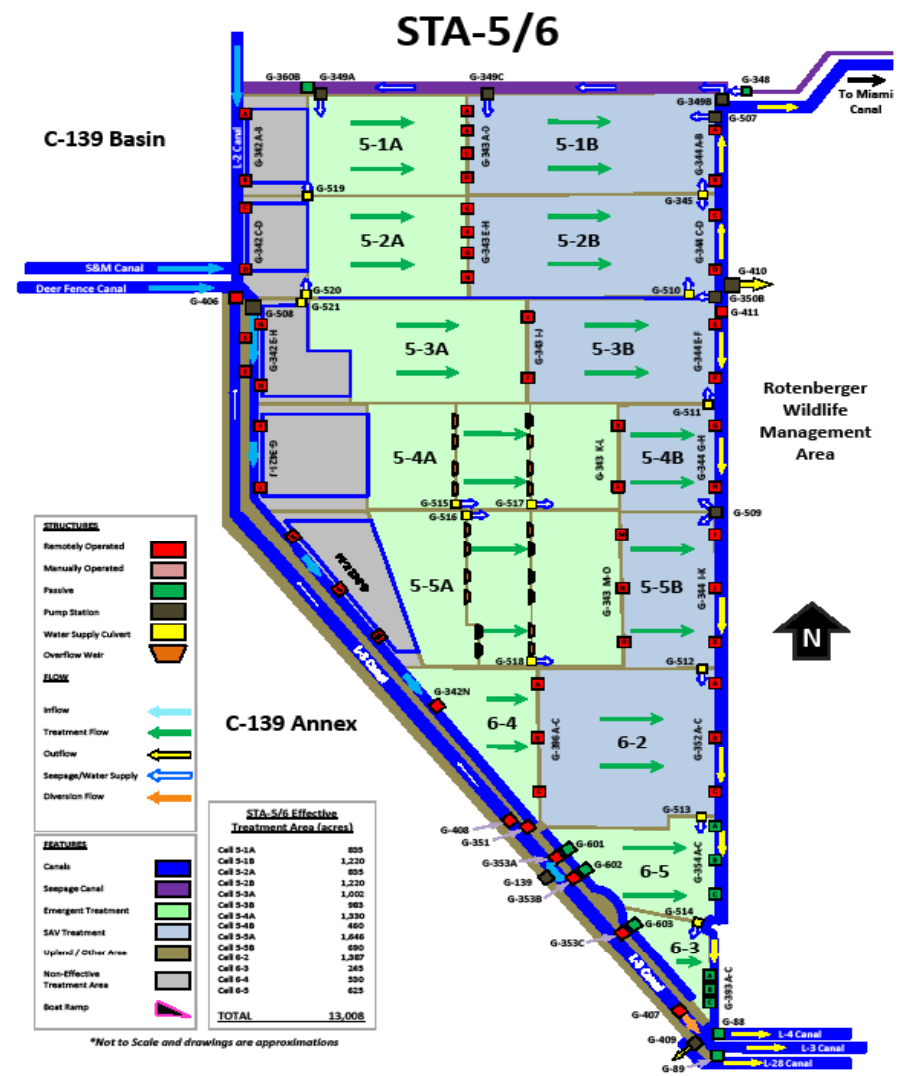
Compartment C Buildout



- East of Feeder Canal, L-28 and C-139 Basins
- West of Rotenberger Wildlife Management Area

Compartment C Buildout

- Flowways 1 and 2 discharge north to Miami Canal
- Flowway 3, Compartment C, and STA-6, discharge south to the L-3 Canal.



Compartment C Buildout

- Accomplishments to date:
 - Completed Final Design-STA and Pump Station
 - Completed Pump Equipment Procurement Contract
 - U.S. Army Corps of Engineers Completed Record of Decision and Compartment C 404 Permit Prior to March 2009 Governing Board
 - U.S. Department of Interior Land Use Change Received
 - Completed Construction of STA
 - Issued NTP April 6, 2009
 - Achieved Flow Capable Milestone December 2010
 - Achieved Final Completion on **September 18, 2011**
 - Continued Construction of G-508 Pump Station
 - Issued NTP September 1, 2009
 - Installed Diesel and Electric Pumps
 - Completed Superstructure

Compartment C Buildout

- What's Next:
 - Continue Construction of G-508 Pump Station

- Construction Completion Schedule
 - G-508 Pump Station February 2012

G-508 Pump Station – July 2011



G-508 Pump Station – September 2011



Questions?

