



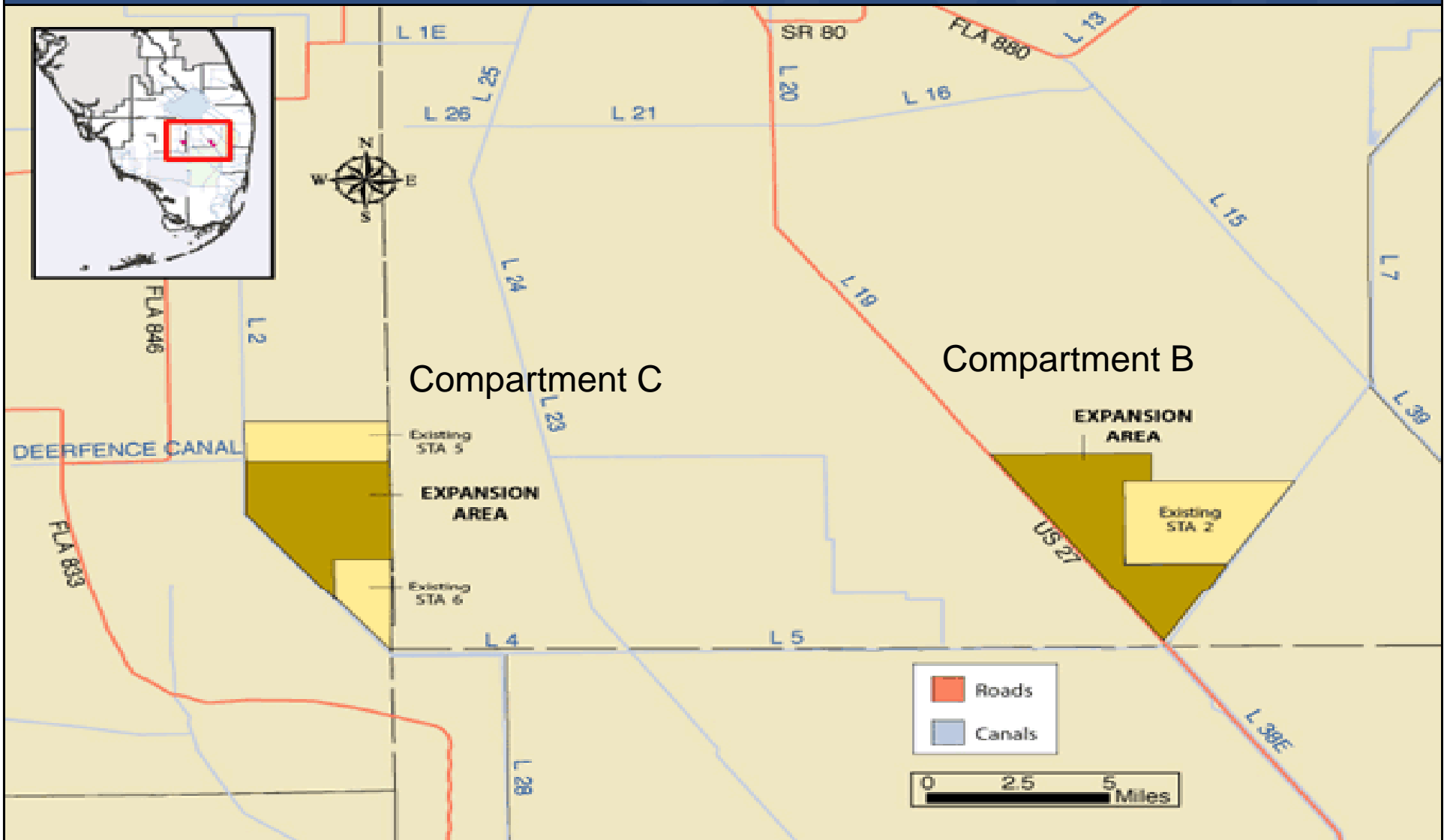
Compartment B Buildout and Compartment C Buildout Stormwater Treatment Areas Update

Quarterly Communications Meeting on the
Long-Term Plan for Achieving Water Quality Goals for the
Everglades Protection Area Tributary Basins

September 10, 2010

*Matthew Alexander, P.E., Project Manager
Everglades Restoration Engineering Department
malexand@sfwmd.gov*

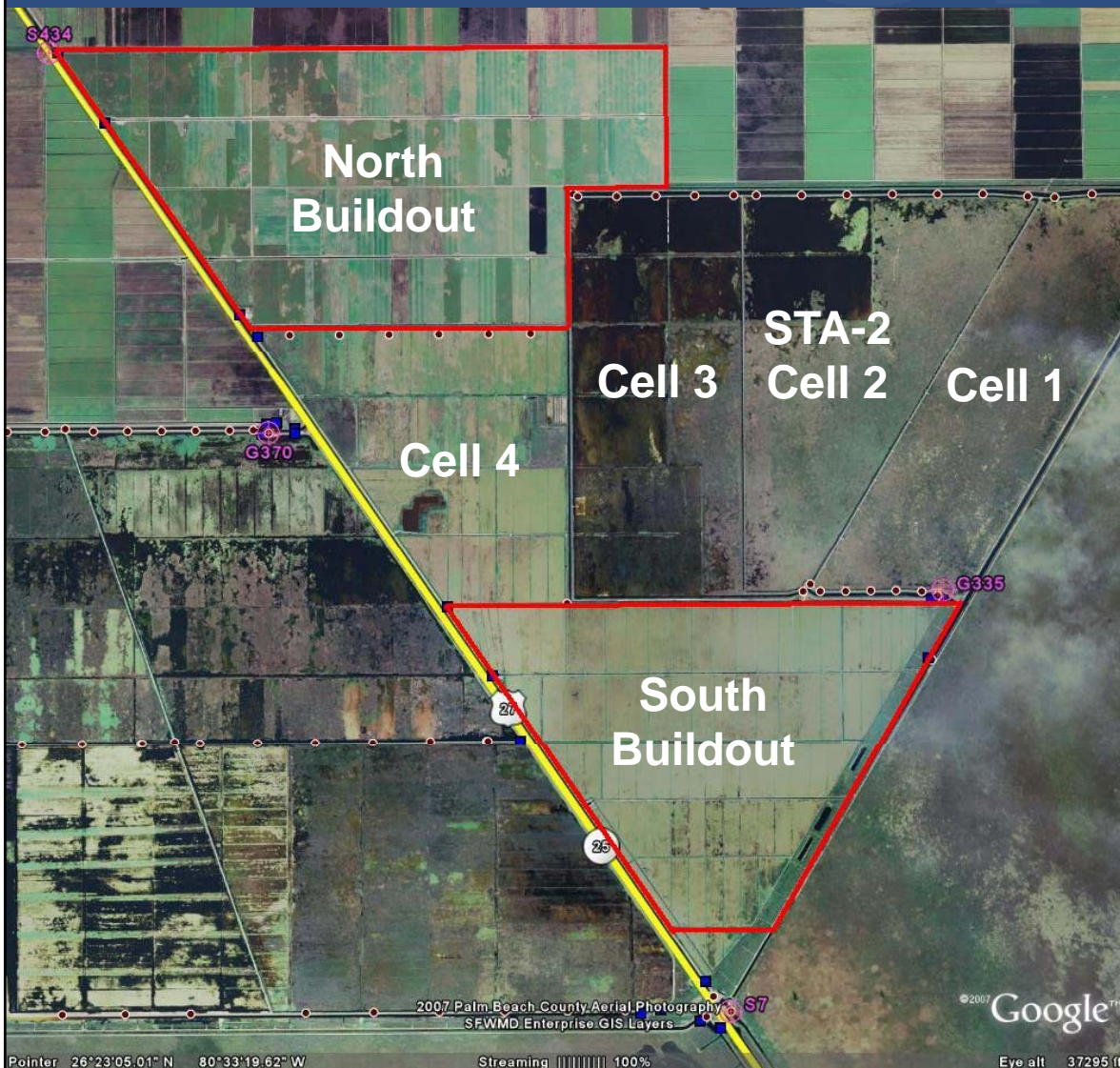
Location of Compartments B and C



Basis and Purpose

- Component of the Everglades Construction Project and the Everglades Protection Area Tributary Basins Long-Term Plan for Achieving Water Quality Goals (Long-Term Plan)
- Included in the 10-Year Strategic Plan and the current Annual Plan
- Assist with Redistribution of Flows and Loads in the Stormwater Treatment Area (STA) System to achieve optimal performance

Compartment B Buildout



- East of U.S. 27 and STA-3/4
- West of STA-2

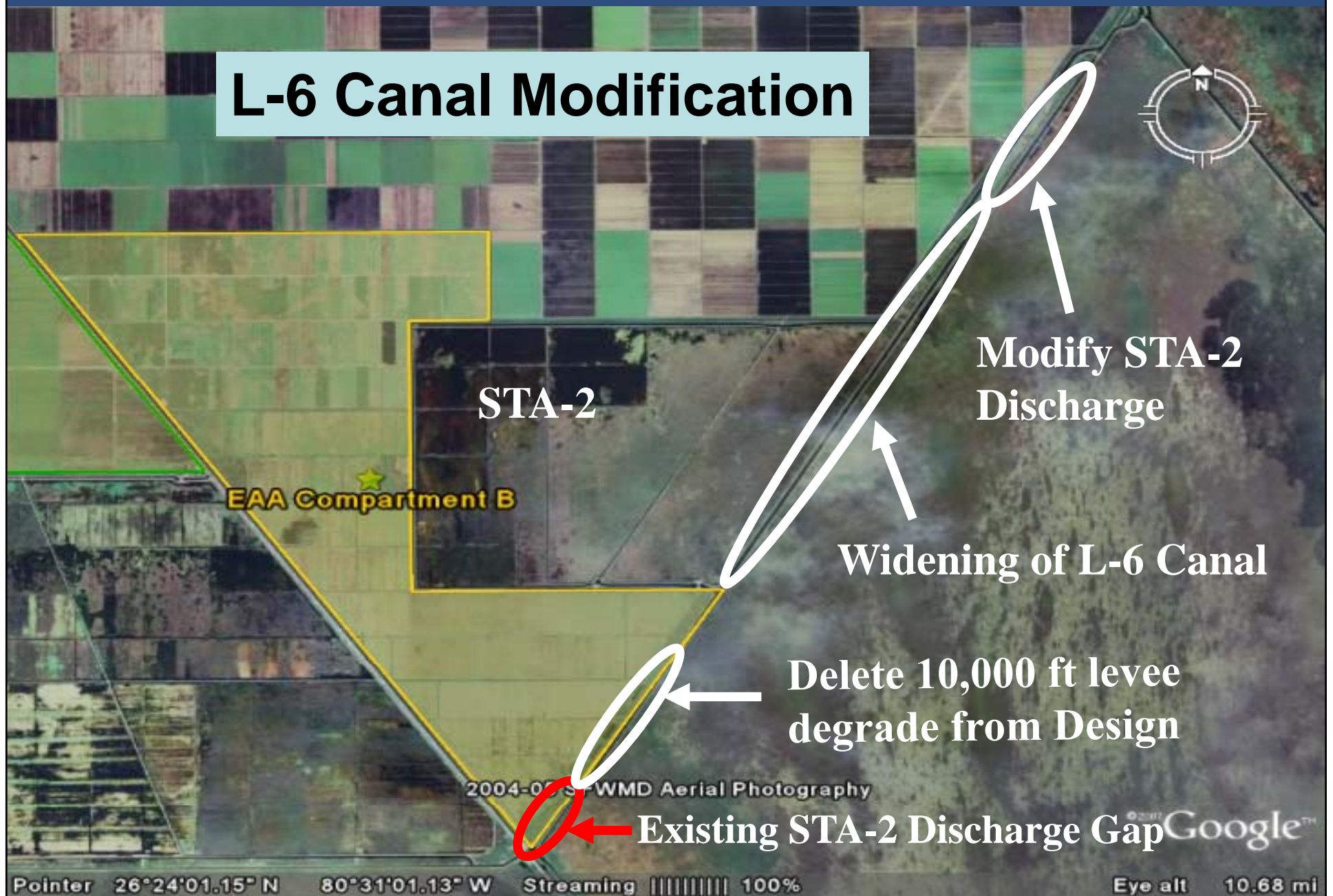
Compartment B Buildout

- Accomplishments to date:
 - Completed Final Design - Civil Works
 - Completed Final Design - Pump Stations
 - Completed Pump Equipment Procurement Contract
 - Construction Permits Received
 - Started Construction – Civil Works
 - Issued Notice to Proceed (NTP) June 1, 2009 for North and South Buildouts
 - Started Construction – G-435, G-434 and G-436 Pump Stations
 - Issued NTP September 14 & 17, 2009

Compartment B Buildout

- What's next:
 - Re-design of project discharge at L-6 Canal to Water Conservation Area 2A
 - Pump Equipment Procurement Delivery
 - Continue construction of Civil Works
 - Continue construction of G-434, G-435, and G-436 pump stations
 - Start construction of Inflow Canal Bridges at G-434 and G-435
- Construction Completion
 - Flow Capable Civil Works – December 31, 2010
 - Permanent Pump Stations February 28, 2012

L-6 Canal Modification



L-6 Canal Modification

- Conceptual Design received July 2, 2009
- Final Geotechnical Report received Oct.14, 2009
- Intermediate Design received Sept.18, 2009
- Pre-Final Design received December 21, 2009
- Final Design due August 31, 2010
- Bid Opening – DELAY due to USACE 408 process review regarding flood protection prior to issue of 404 permit

North Buildout – Inflow Canal



G-438E

SFWMD



G-443A

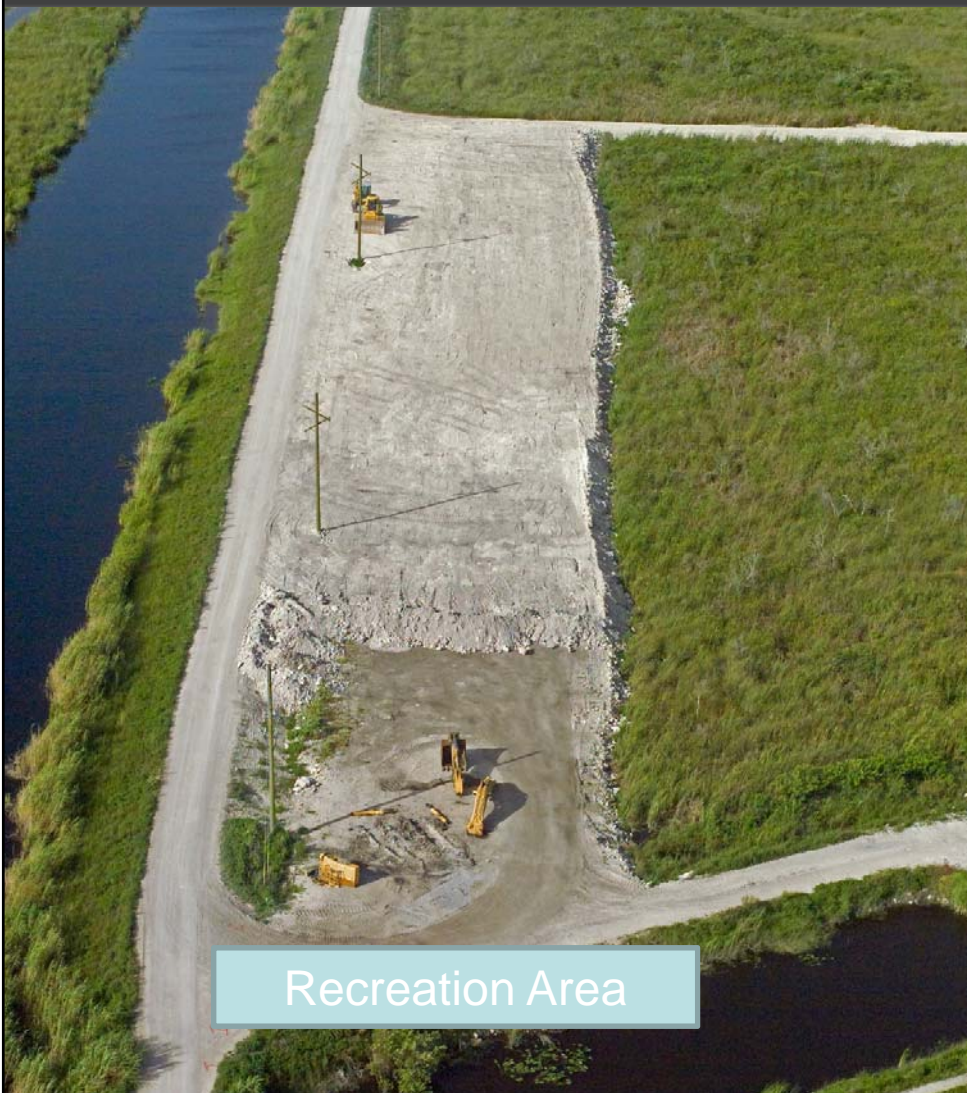


South Buildout – looking west

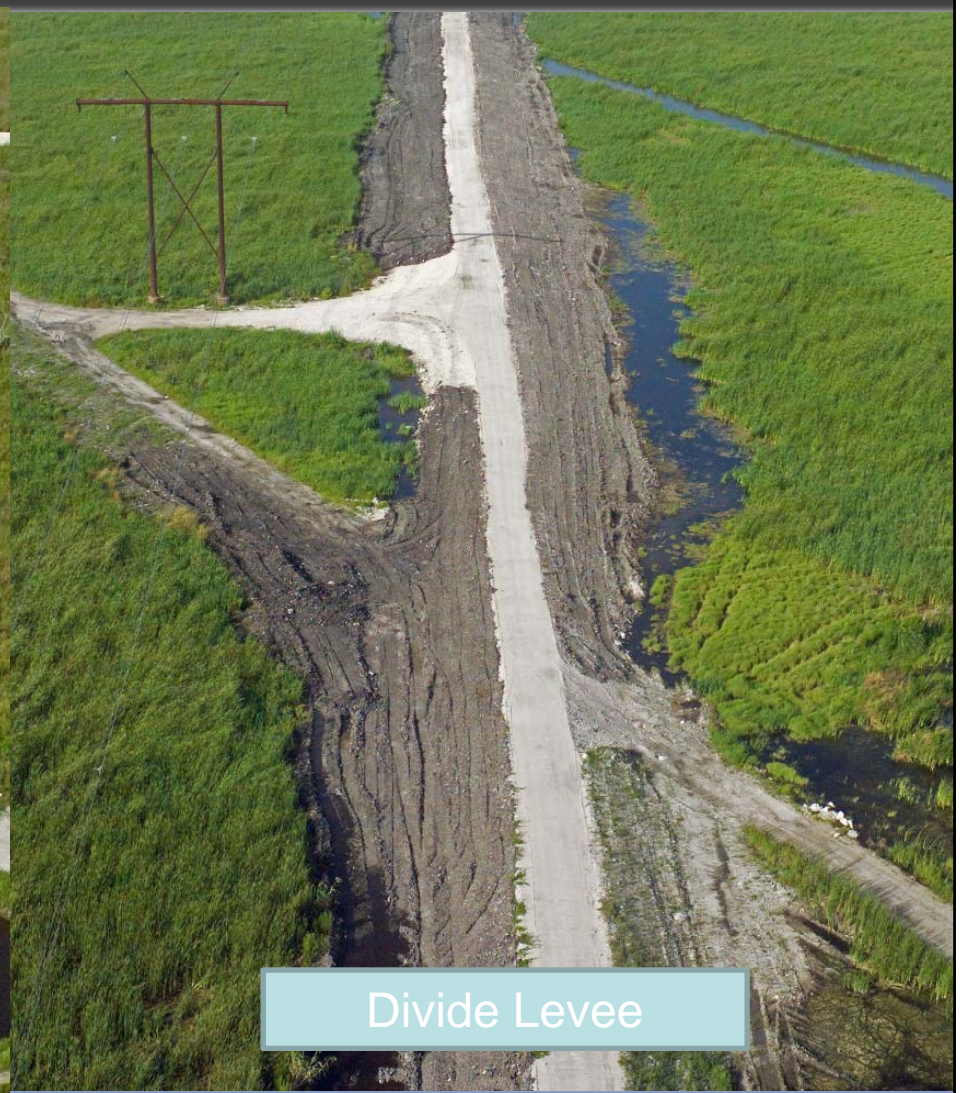


South Buildout

SFWMD



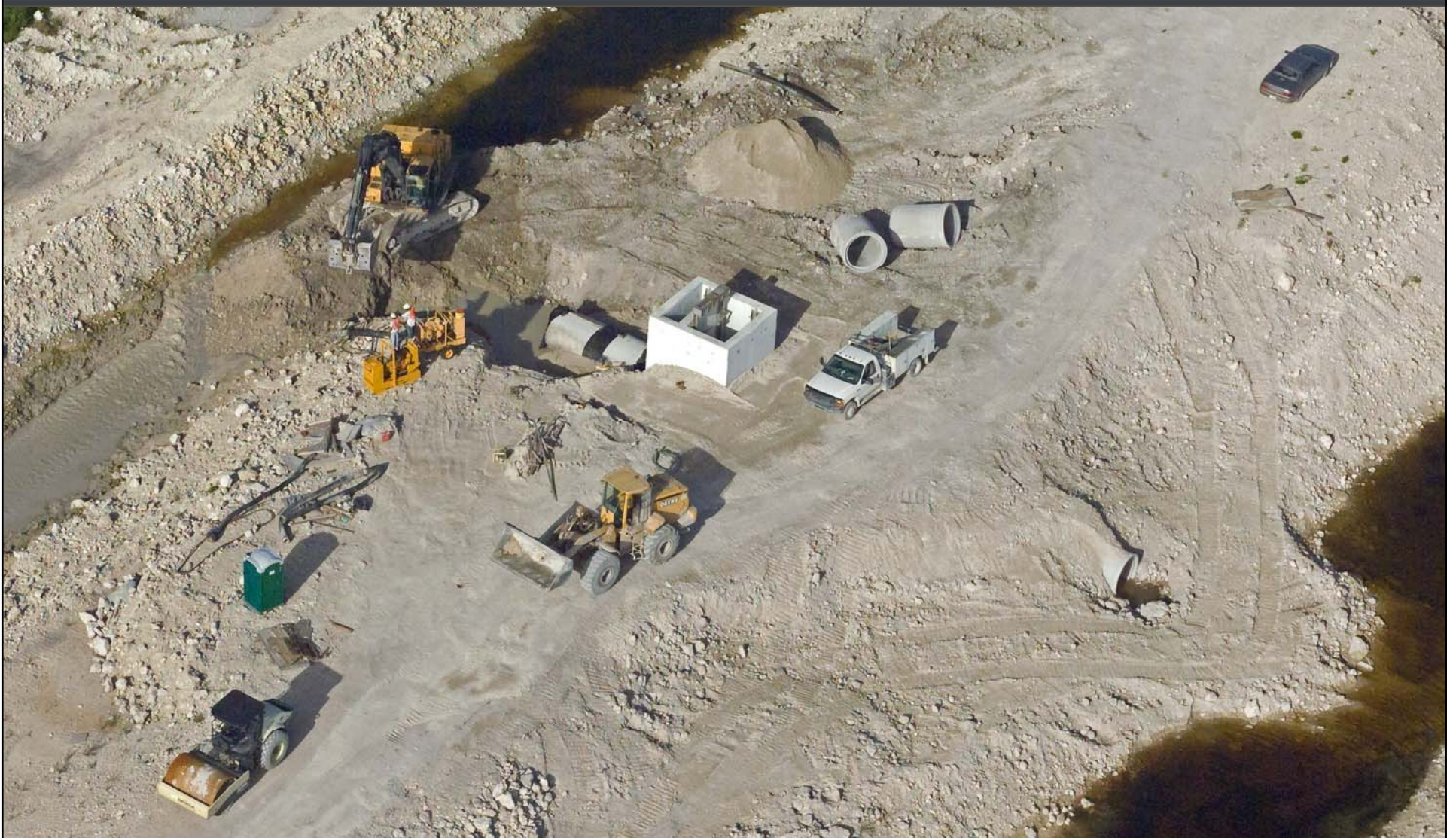
Recreation Area



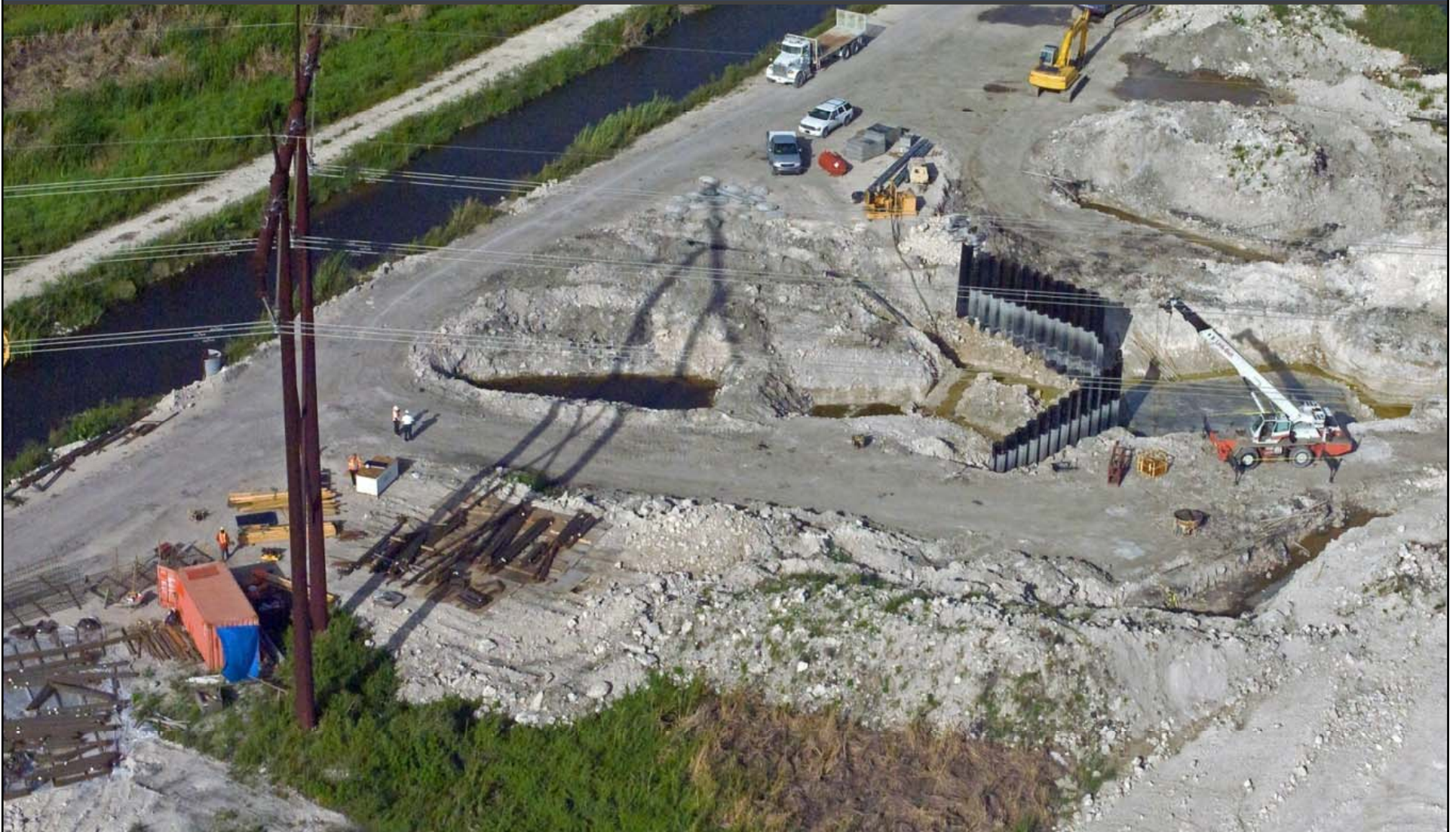
Divide Levee

G-440E

SFWMD



G-445 Pump Station



G-434 Pump Station



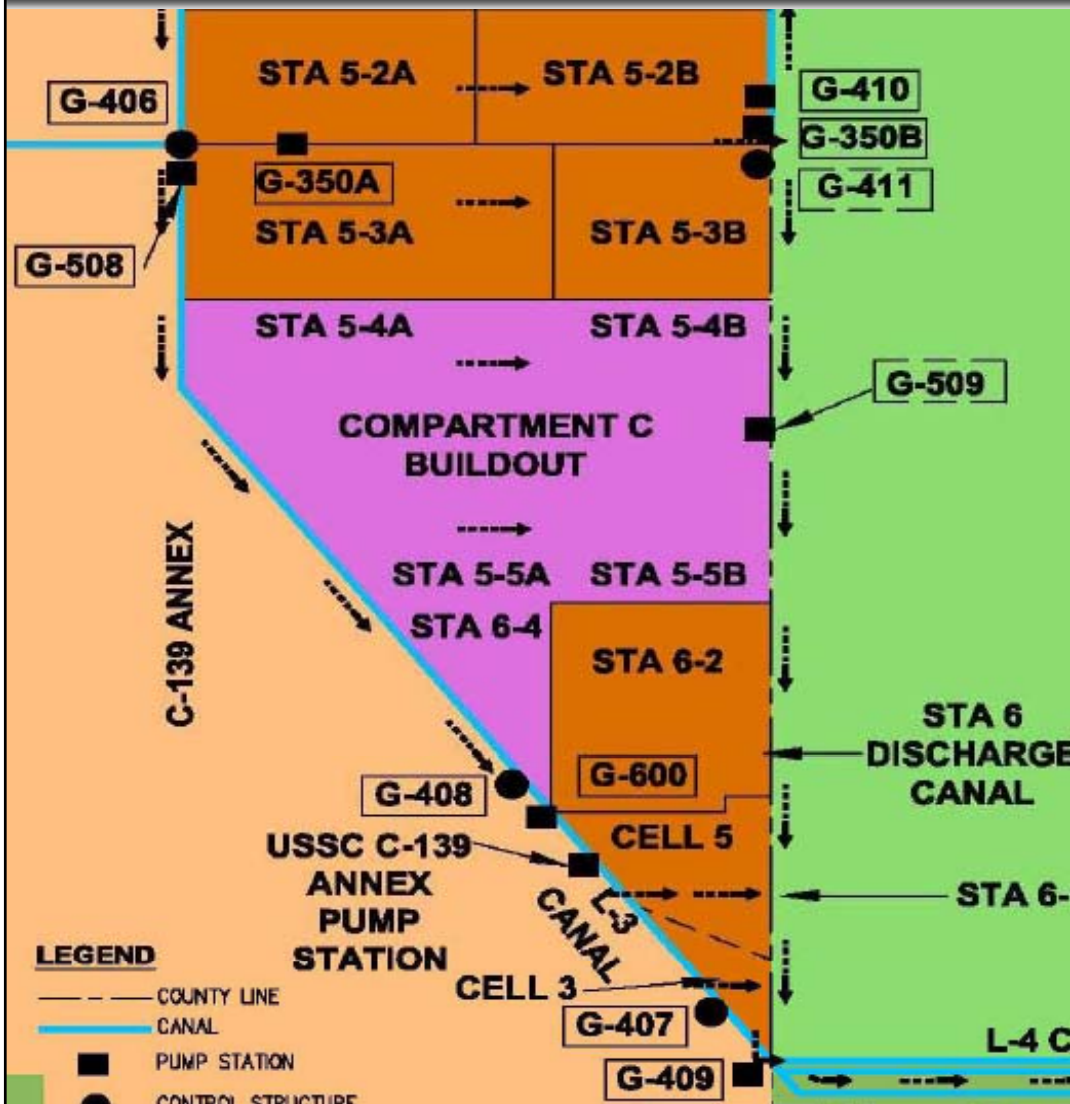
G-435 Pump Station



G-436 Pump Station



Compartment C Buildout



- East of Feeder Canal, L-28 and C-139 Basins
- West of Rotenberger Wildlife Management Area

Compartment C Buildout

- Accomplishments to date:
 - Completed Final Design-Civil Works
 - Completed Final Design-Pump Station
 - Completed Pump Equipment Procurement Contract
 - U.S. Army Corps of Engineers completed Record of Decision and Compartment C 404 permit prior to March 2009 Governing Board
 - U.S. Department of Interior Land Use Change received
 - Started Construction of Civil Works
 - Issued NTP April 6, 2009
 - Started construction of G-508 pump station
 - Issued NTP September 1, 2009

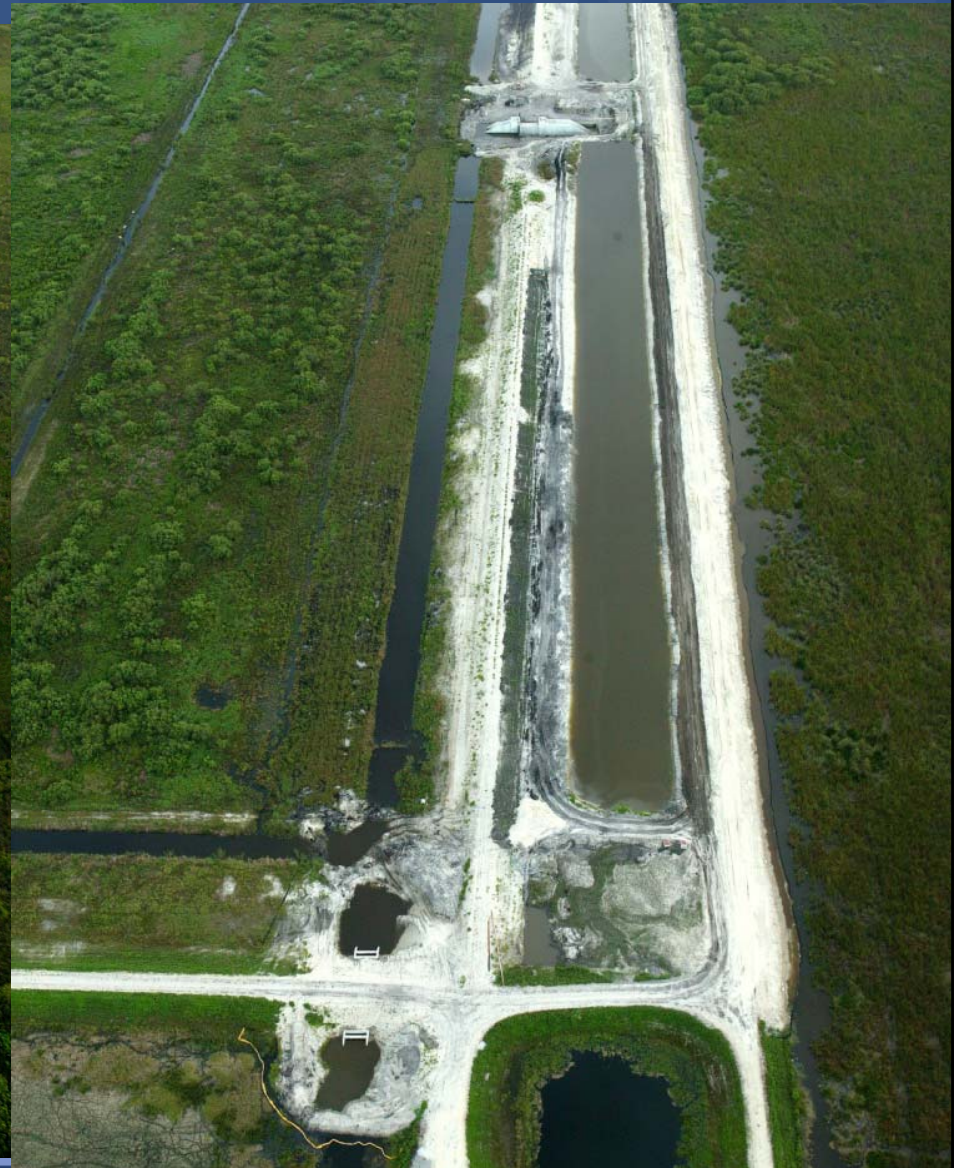
Compartment C Buildout

- What's Next:
 - Pump Equipment Procurement Delivery
 - Continue construction of Civil Works
 - Continue construction of G-508 Pump Station
- Construction Completion
 - Flow Capable Civil Works December 31, 2010
 - G-508 Pump Station December 30, 2011

Compartment C Buildout



Discharge Canal



Intermediate Levee



G-508 Pump Station



G-508 Pump Station



Rotenberger Pump Station –G708



South of G-410

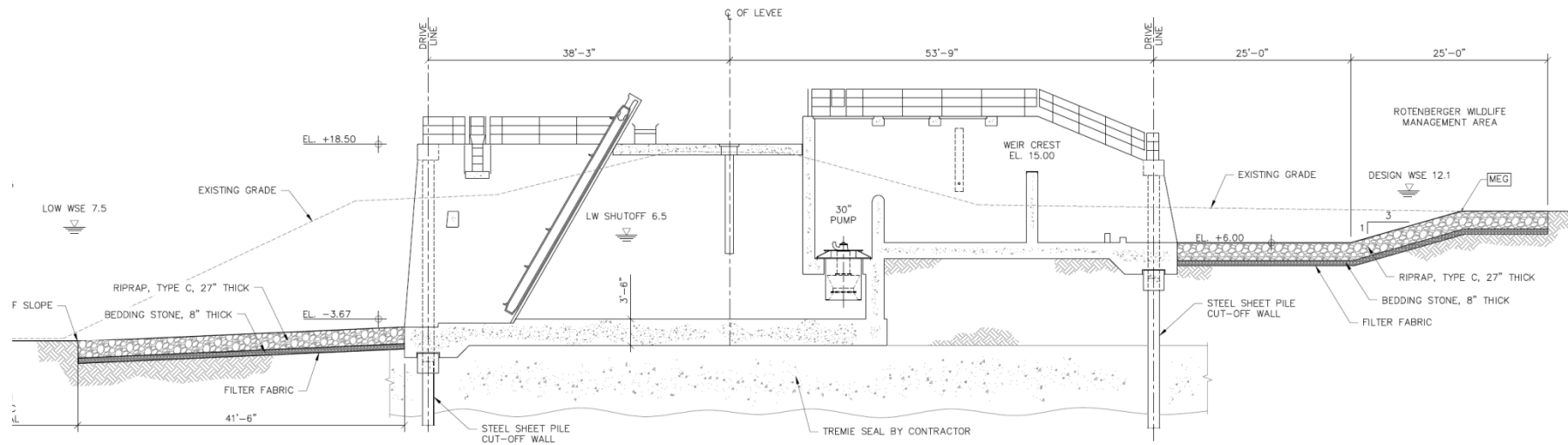
South of future G-411

Project Description

- This project is to design and construct an electric pump station that will be used for hydration of the Rotenberger Wildlife Management Area, supplementing existing pump station G-410.
 - The Major Items of Work includes:
 - Construction of a new electric Pump Station Structure
 - Pump Station will outflow to discharge basin
 - Installation of 2 – 125 HP submersible pumps and motors (125 cfs total)
 - Implementation of electrical power to site and control building
 - Installation of a temporary earthen bridge to provide access to G-410 and levee during construction. Culverts will be installed to allow flow in Discharge Canal.



Project Details – Profile View



PUMP STATION G-708 GENERAL SECTION

SCALE: 1/8" = 1'-0"

Schedule

- Complete Design – September 2010
- Permits and Easement – Fall 2010
- Initiate Construction – Winter 2011
- Complete Construction – 1 year from start

Questions?

