



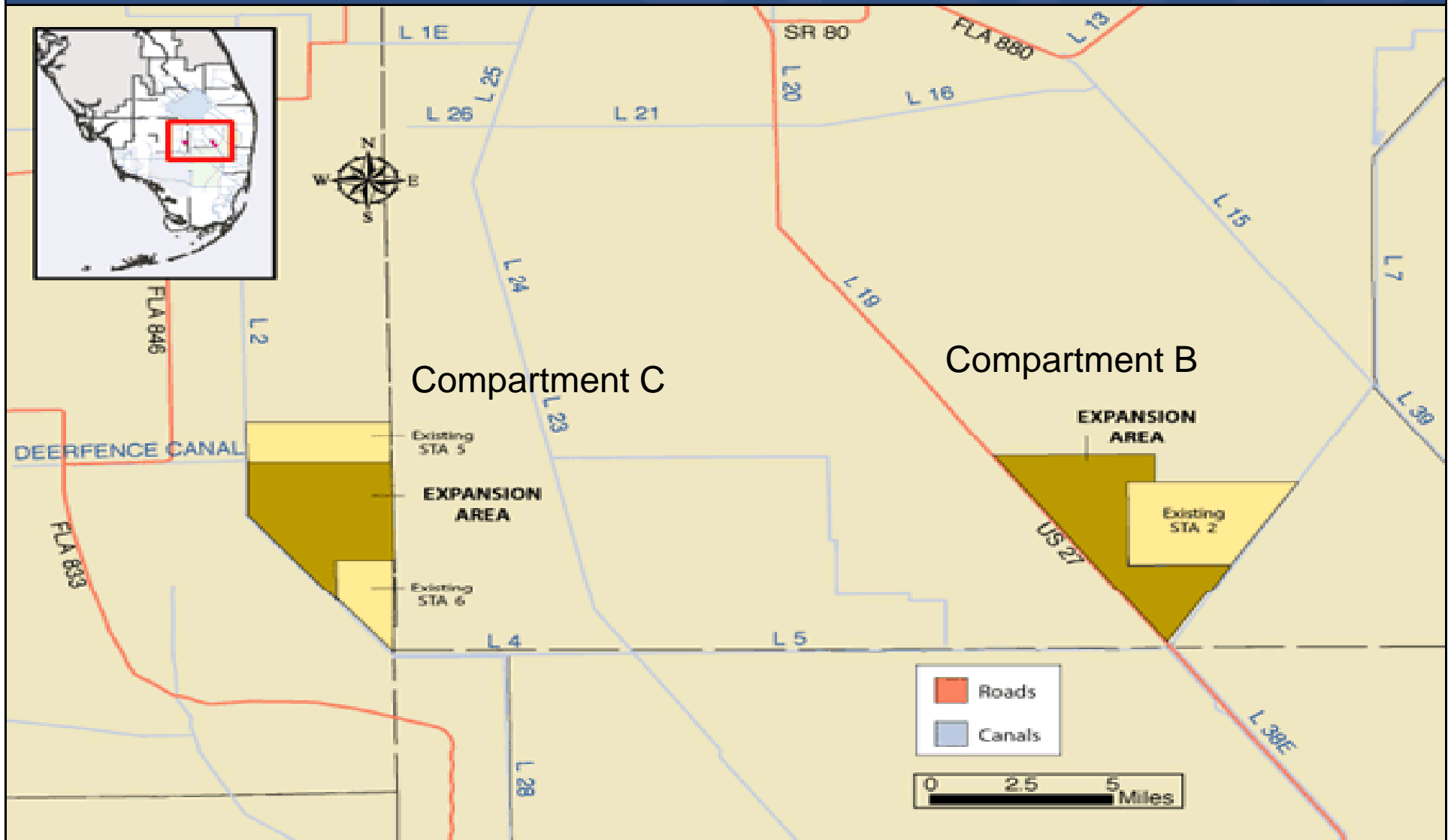
## Compartment B Buildout and Compartment C Buildout Stormwater Treatment Areas Update

Quarterly Communications Meeting on the  
Long-Term Plan for Achieving Water Quality Goals for the  
Everglades Protection Area Tributary Basins

December 10, 2010

*Matthew Alexander, P.E., Project Manager  
Everglades Restoration Engineering Department  
malexand@sfwmd.gov*

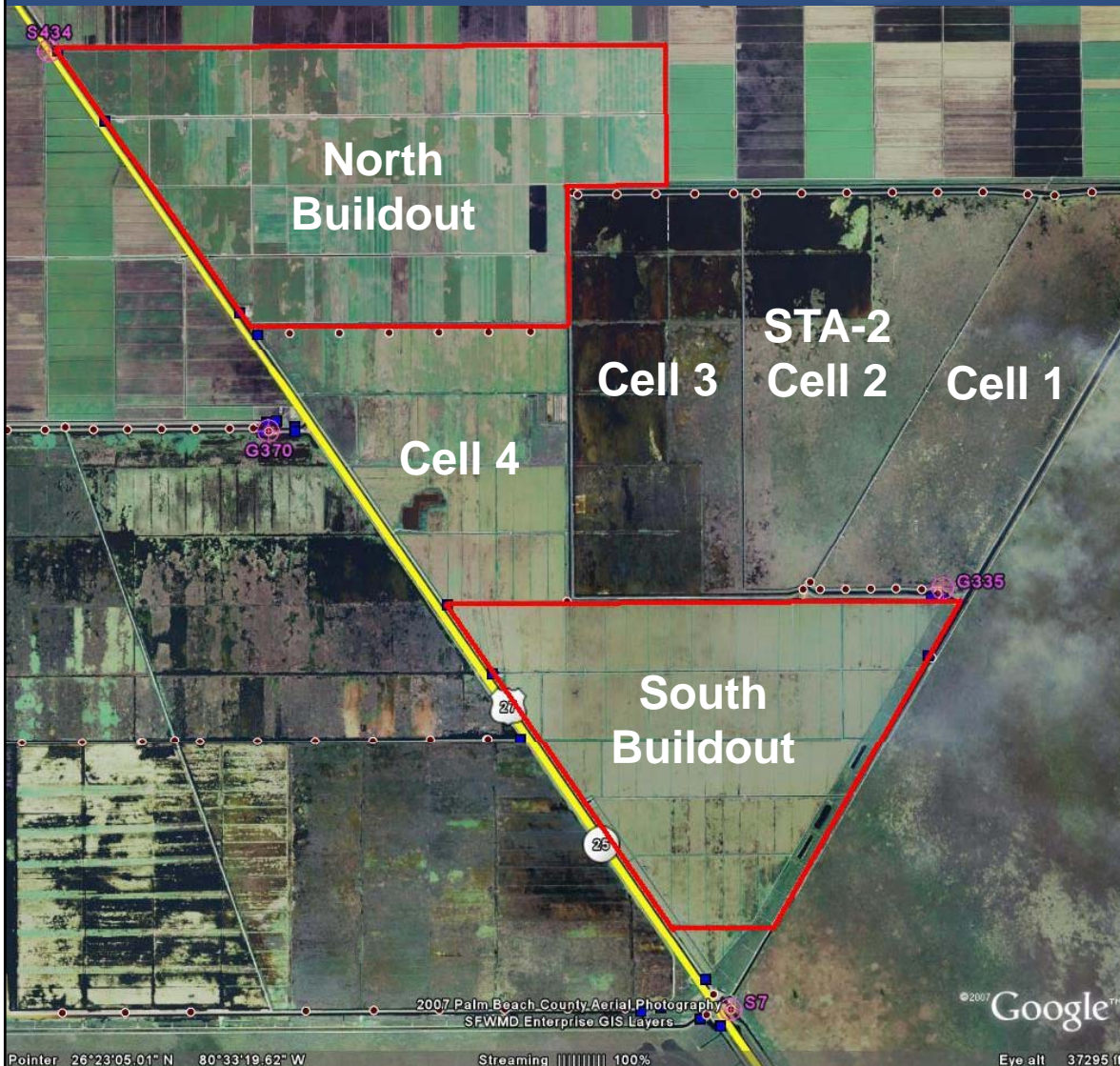
# Location of Compartments B and C



## Basis and Purpose

- Component of the Everglades Construction Project and the Everglades Protection Area Tributary Basins Long-Term Plan for Achieving Water Quality Goals (Long-Term Plan)
- Included in the 10-Year Strategic Plan and the Current Annual Plan
- Assist with Redistribution of Flows and Loads in the Stormwater Treatment Area (STA) System to Achieve Optimal Performance

# Compartment B Buildout



- East of U.S. 27 and STA-3/4
- West of STA-2

## Compartment B Buildout

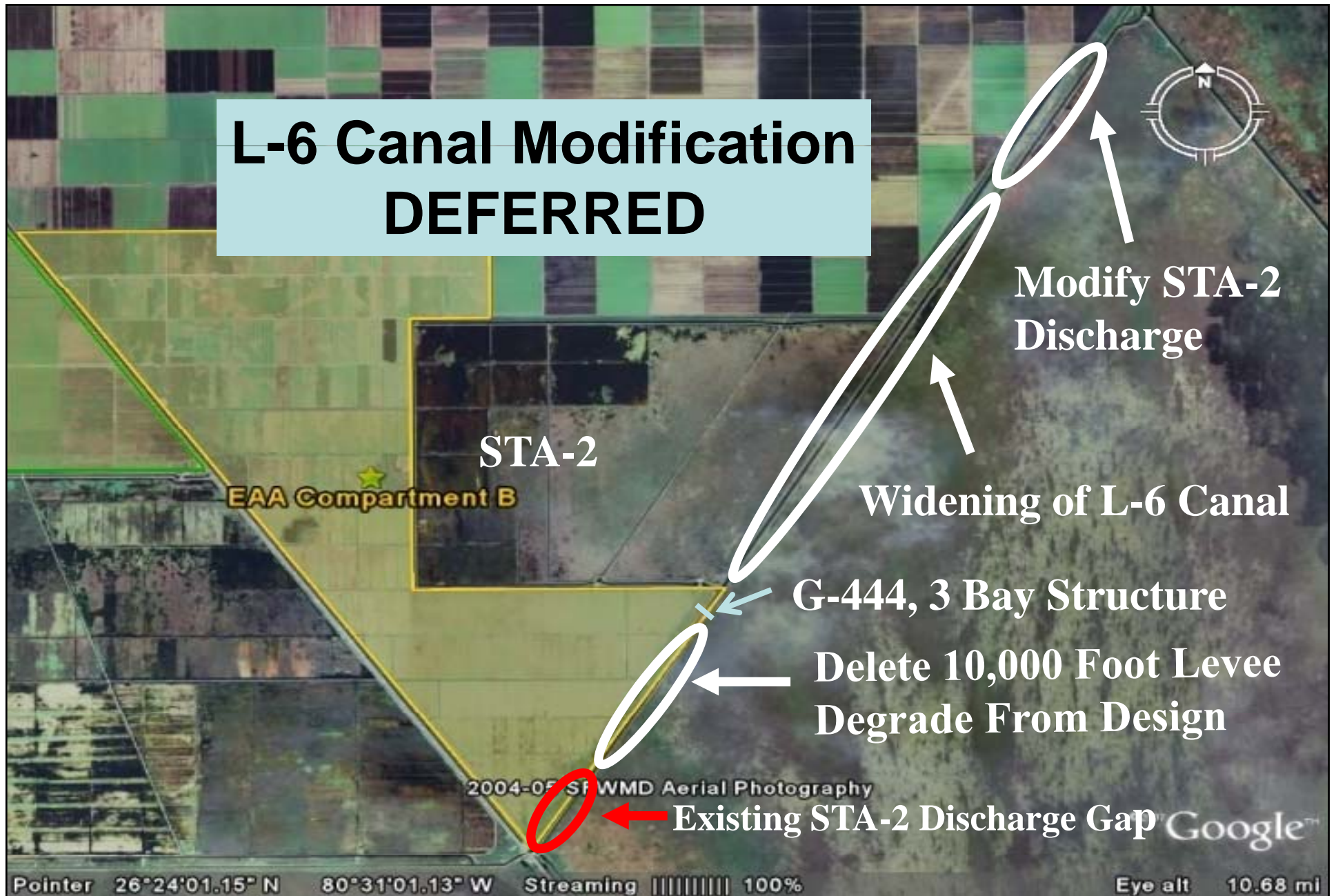
- Accomplishments to date:
  - Completed Final Design - STA, Pump Stations, G-434 & G-435 Bridges and L-6 Canal Modifications
  - Completed Pump Equipment Procurement Contract
  - Construction Permits Received
  - Started Construction – North and South Buildout STAs
    - Issued Notice to Proceed (NTP) June 1, 2009 for North and South Buildouts
  - Started Construction – G-435, G-434 and G-436 Pump Stations
    - Issued NTP September 14 & 17, 2009
  - Started Construction – Bridges at G-434 & G-435 on August 16, 2010



## Compartment B Buildout

- What's next:
  - Pump Equipment Procurement Delivery
  - Continue Construction of STA – Flow Capable Deadline
  - Continue Construction of G-434, G-435, and G-436 Pump Stations
  - Start Construction of Inflow Canal Bridges at G-434 and G-435
- Construction Completion
  - Flow Capable North & South Buildout STAs Dec. 31, 2010
  - North Buildout and South Buildout STAs June 12, 2011
  - G-434, G-435, & G-436 Pump Stations Feb. 28, 2012

# L-6 Canal Modification DEFERRED

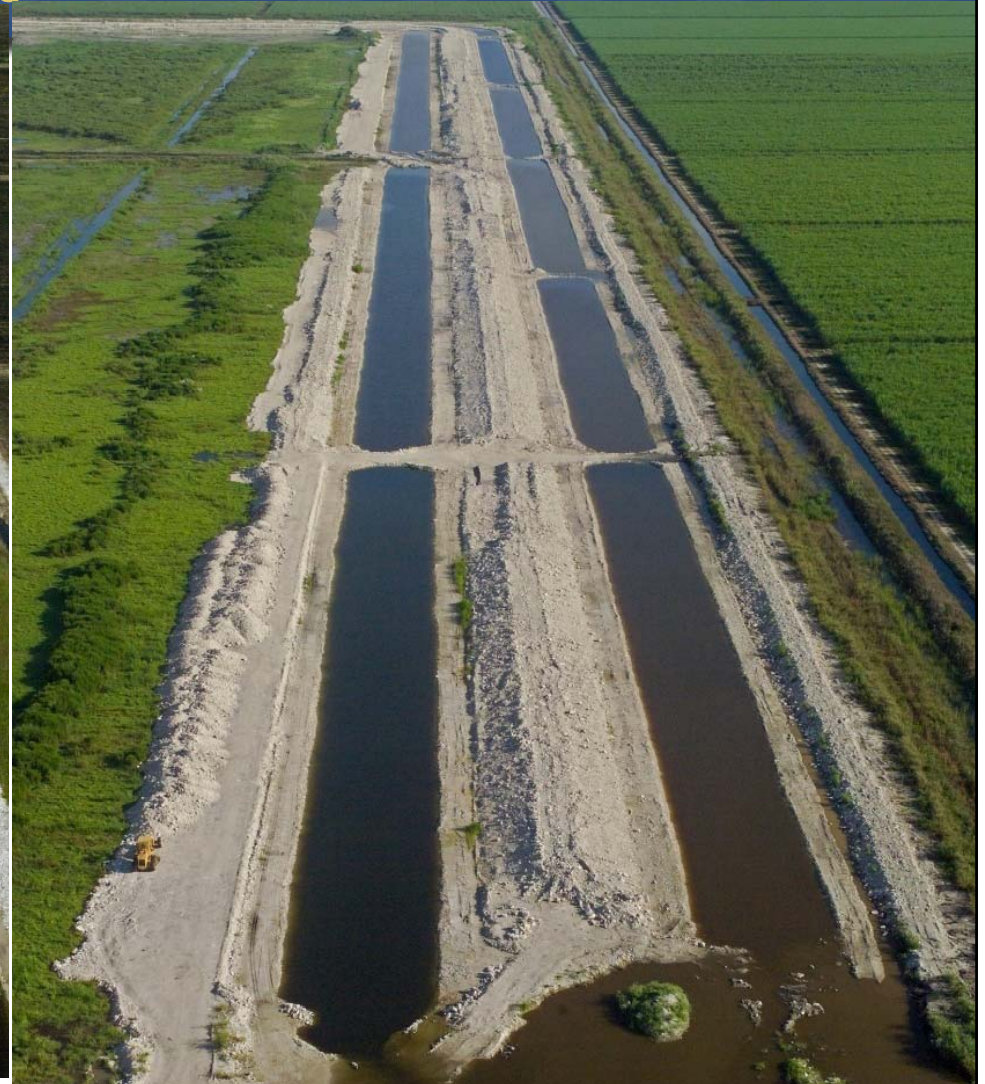
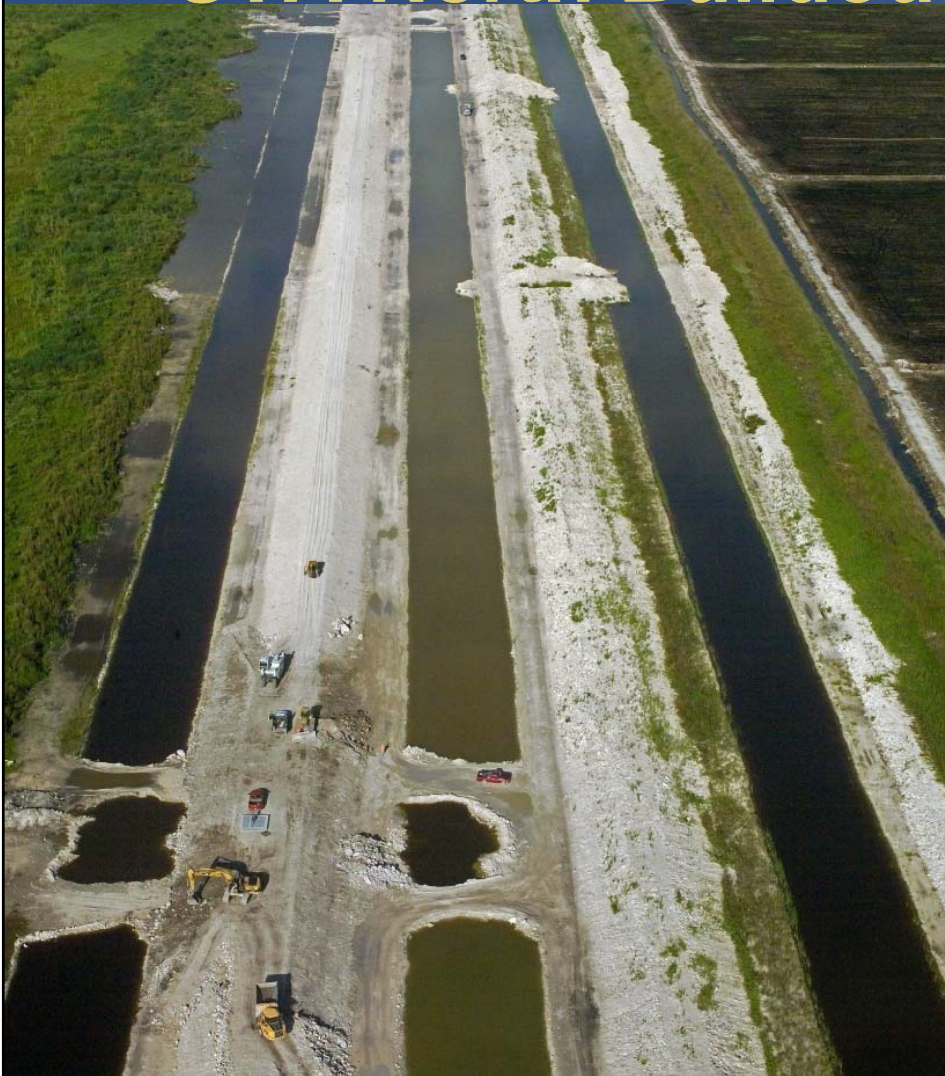


## L-6 Canal Modification DEFERRED

- Conceptual Design Received July 2, 2009
- Final Geotechnical Report Received Oct.14, 2009
- Intermediate Design Received Sept.18, 2009
- Pre-Final Design Received December 21, 2009
- Final Design Received August 31, 2010
- Bid Opening – DELAY Due to USACE 408  
Process Review Regarding Flood Protection Prior  
to Issue of 404 Permit



# EAA Compartment B STA North Buildout





# EAA Compartment B STA North Buildout





## G-443A & B





# EAA Compartment B STA South Buildout





G-441





## G-440C





## G-445 Pump Station





## G-434 Pump Station



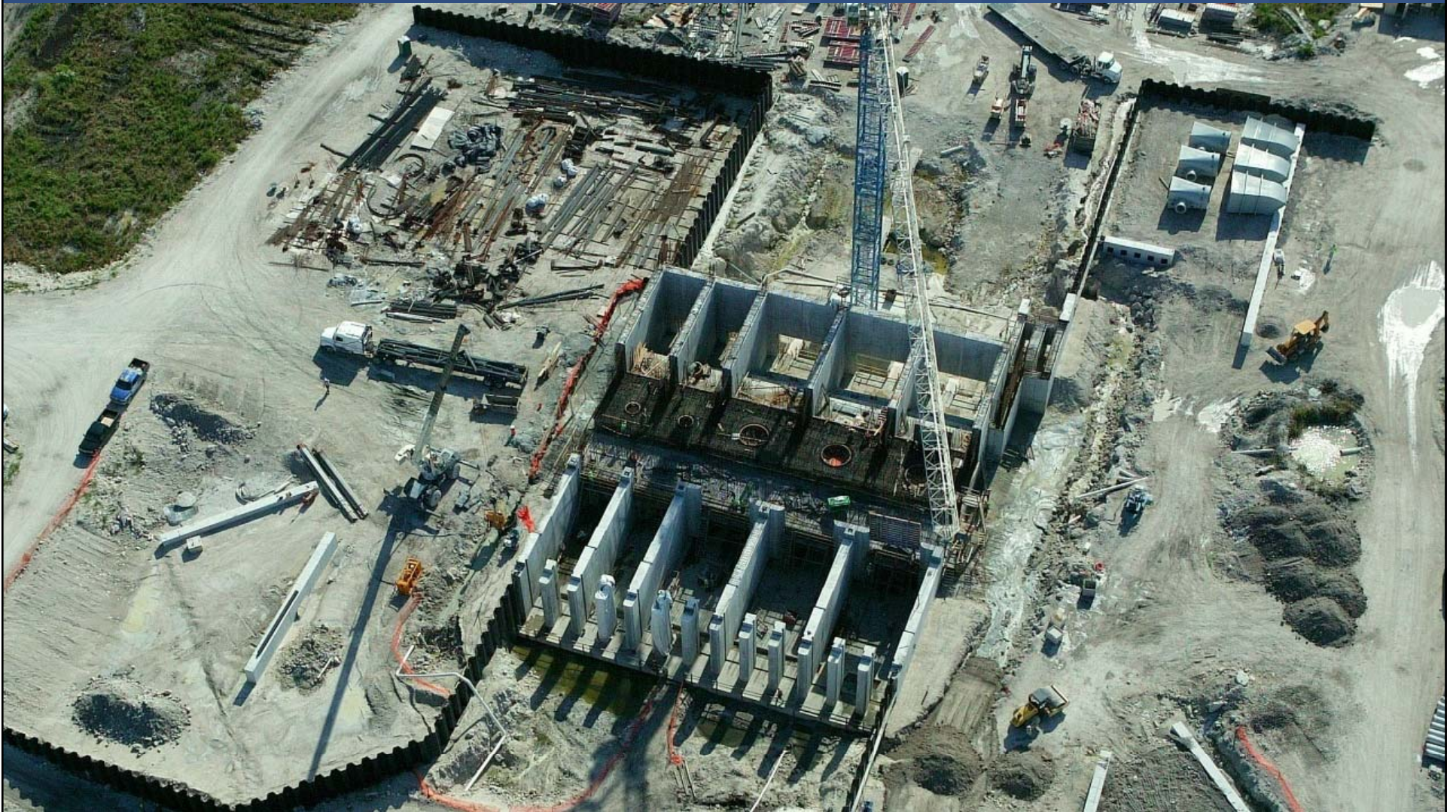


## G-435 Pump Station





## G-436 Pump Station

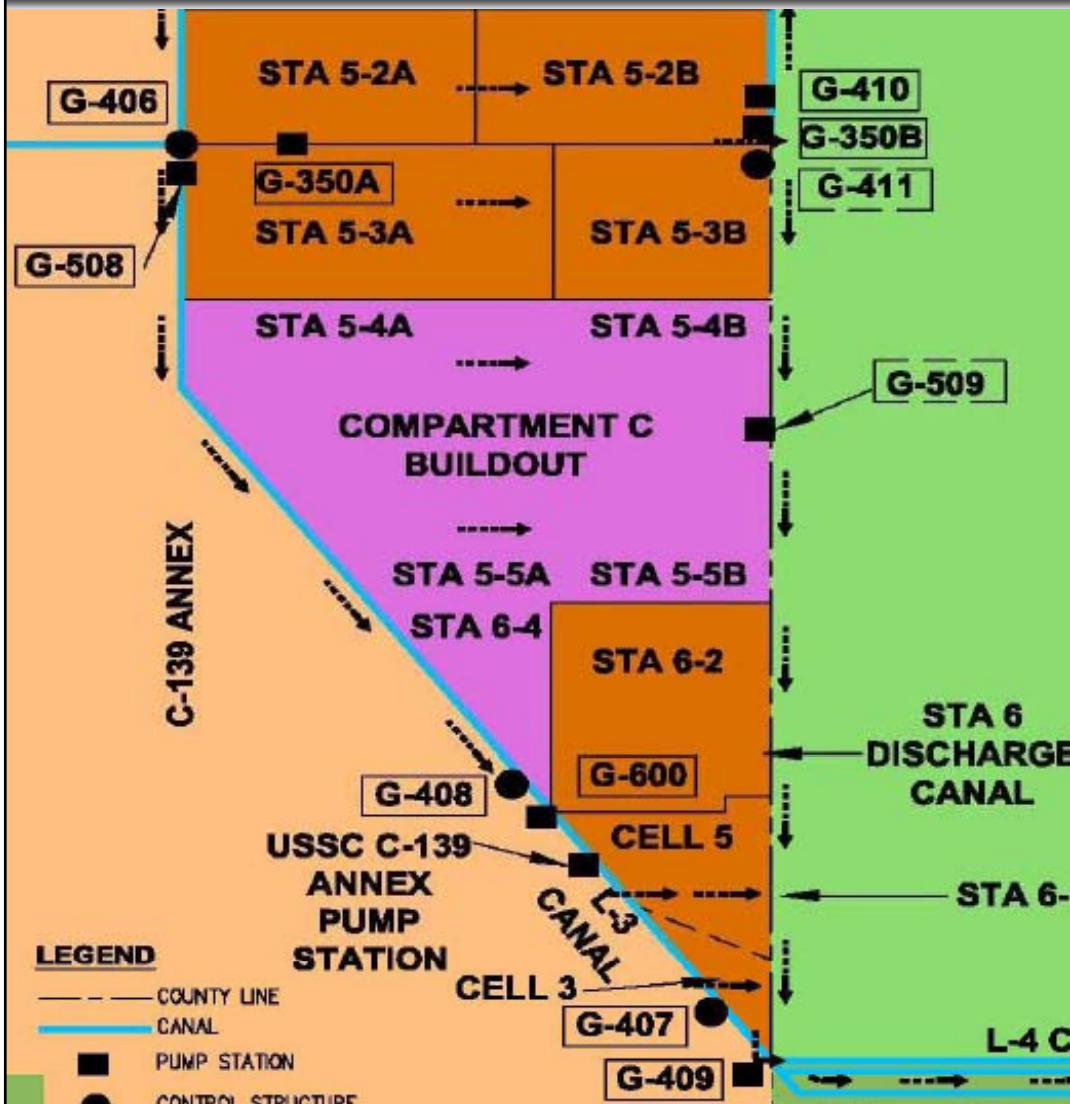




## G-435 Bridge



# Compartment C Buildout



- East of Feeder Canal, L-28 and C-139 Basins
- West of Rotenberger Wildlife Management Area



## Compartment C Buildout

- Accomplishments to date:
  - Completed Final Design-STA
  - Completed Final Design-Pump Station
  - Completed Pump Equipment Procurement Contract
  - U.S. Army Corps of Engineers Completed Record of Decision and Compartment C 404 Permit Prior to March 2009 Governing Board
  - U.S. Department of Interior Land Use Change Received
  - Started Construction of STA
    - Issued NTP April 6, 2009
  - Started Construction of G-508 Pump Station
    - Issued NTP September 1, 2009

## Compartment C Buildout

- What's Next:
  - Pump Equipment Procurement Delivery
  - Continue Construction of STA – Flow Capable Deadline
  - Continue Construction of G-508 Pump Station
  
- Construction Completion
  - Flow Capable STA      December 31, 2010
  - STA                              August 15, 2011
  - G-508 Pump Station      March 1, 2012



# EAA Compartment C STA Buildout





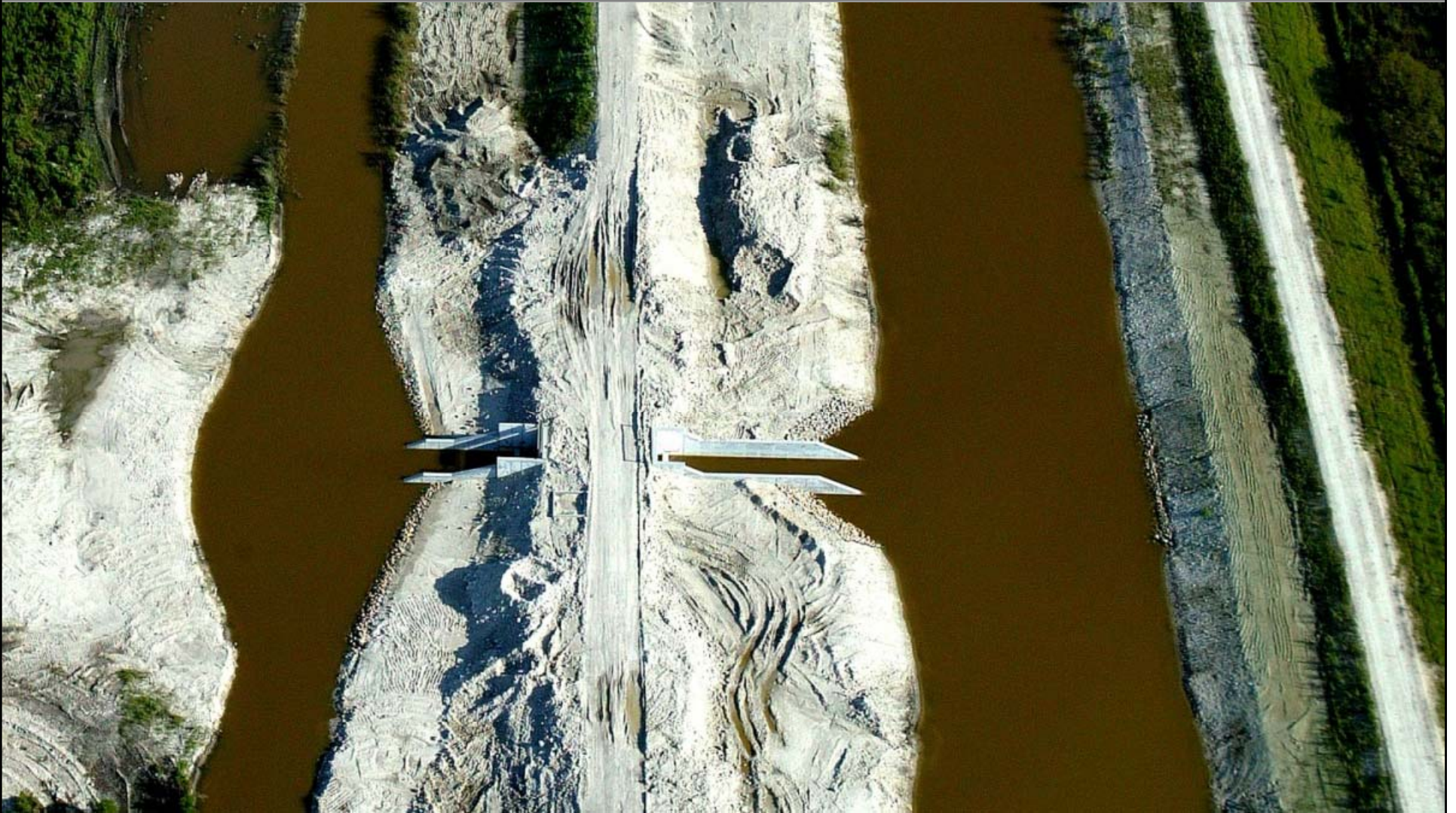
# EAA Compartment C STA Buildout





G-344I

SFWMD





G-3430

SFWMD





# G-508 Pump Station





## Rotenberger Pump Station –G708



South of G-410

South of Future G-411

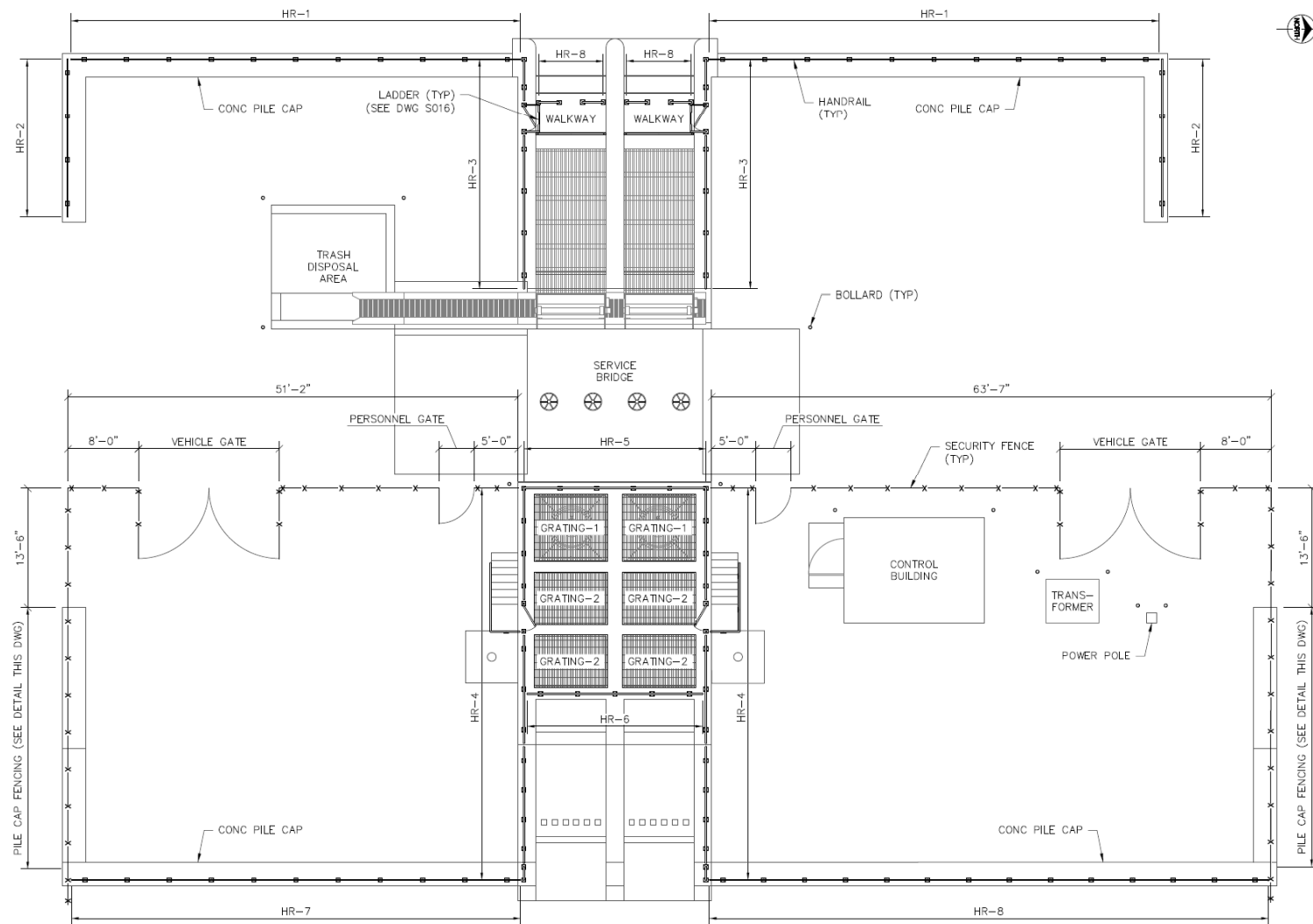


## Project Description

- This project is to design and construct an electric pump station that will be used for hydration of the Rotenberger Wildlife Management Area, supplementing existing Pump Station G-410.
  - The Major Items of Work Includes:
    - Construction of a new electric Pump Station Structure
    - Pump Station will outflow to discharge basin
    - Installation of 2 – 125 HP submersible pumps and motors (125 cfs total)
    - Implementation of electrical power to site and control building
    - Installation of a temporary earthen bridge to provide access to G-410 and levee during construction. Culverts will be installed to allow flow in Discharge Canal.

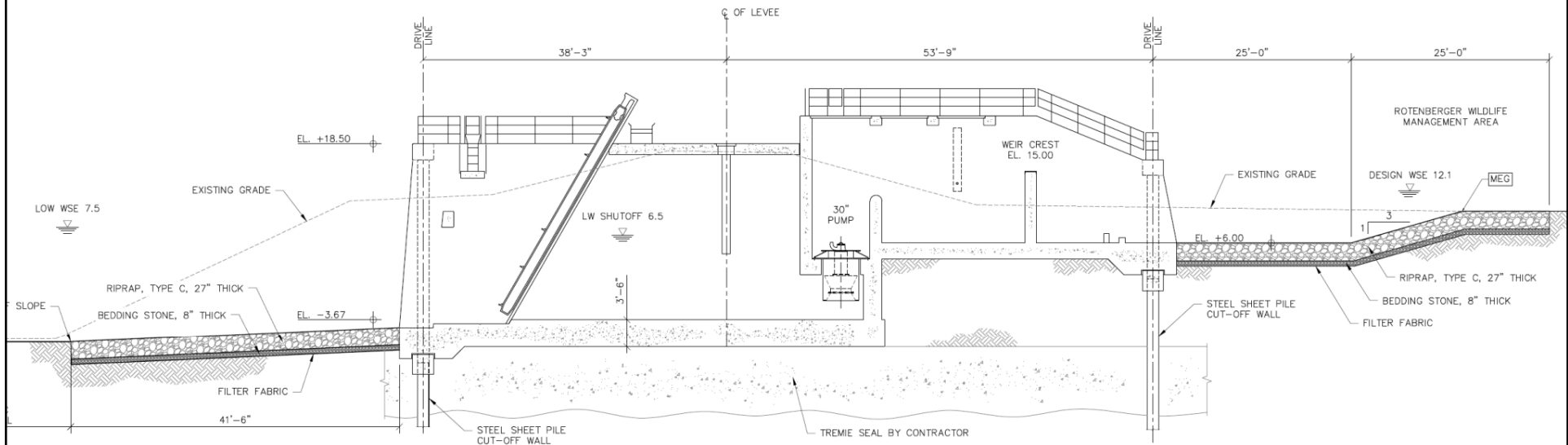


# Project Details - Plan View





# Project Details – Profile View



**PUMP STATION G-708 GENERAL SECTION**

SCALE: 1/8" = 1'-0"



## Schedule

- |                             |                      |
|-----------------------------|----------------------|
| ■ Completed Design          | October 2010         |
| ■ Easement From State Lands | January 2011         |
| ■ Permits                   | Winter 2011          |
| ■ Initiate Construction     | June 2011            |
| ■ Complete Construction     | 1.5 Years From Start |



# Questions?

