

STA Vegetation Management and Enhancement Update

Lou Toth

Chief Scientist

Vegetation Management Division

ltoth@sfwmd.gov

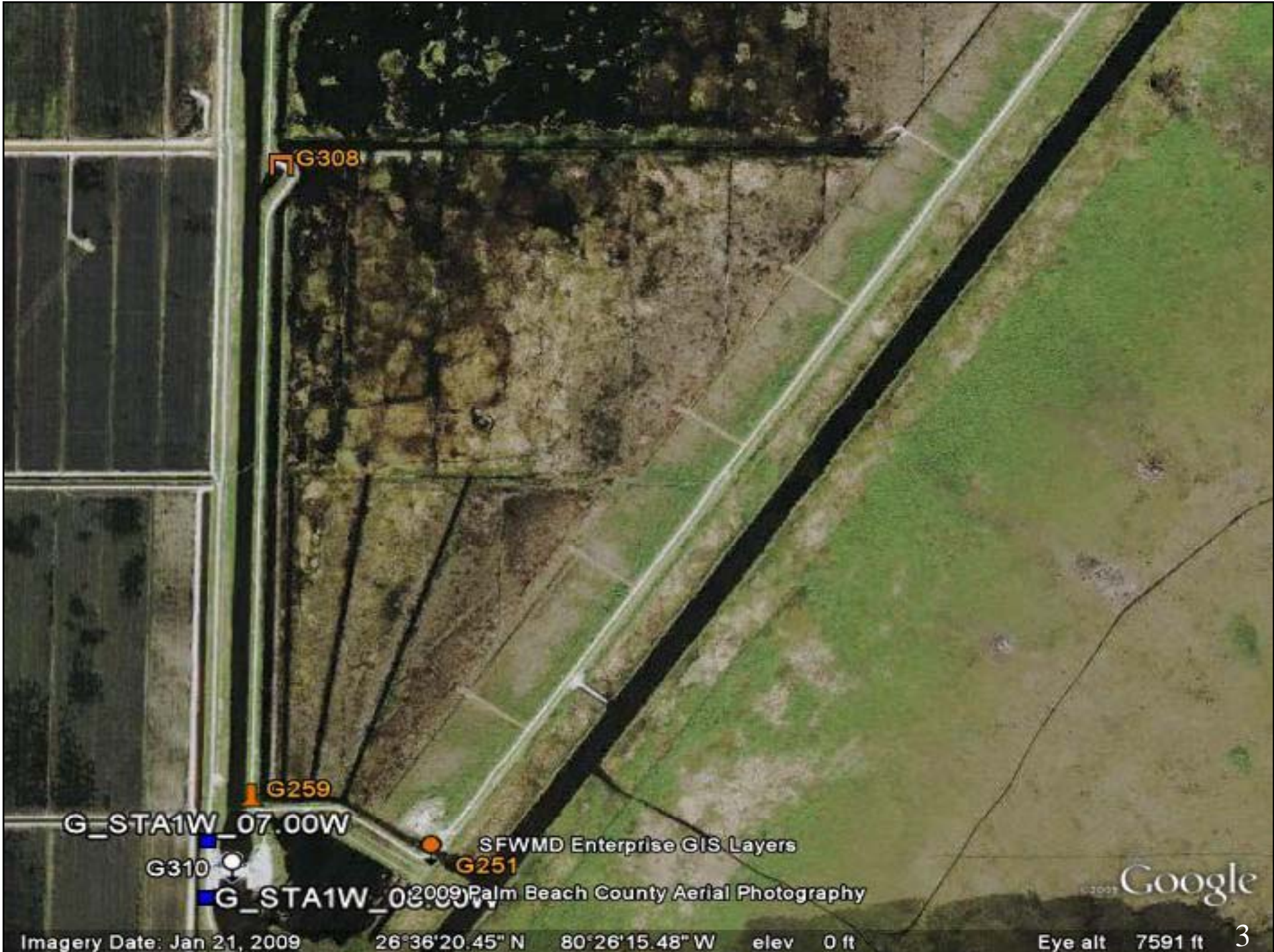
Quarterly Communications Meeting on the Long-Term Plan
for Achieving Water Quality Goals for Everglades Protection
Area Tributary Basins

June 1, 2011



STA 1W – Cell 3 Short Circuit

Earthen Plug



Google

Imagery Date: Jan 21, 2009

26°36'20.45" N 80°26'15.48" W elev 0 ft

Eye alt 7591 ft





04/21/2011

STA 5 – Cell 1B Short Circuit

Vegetation Plantings









STA 1W – Cell 5A

Bullrush Planting



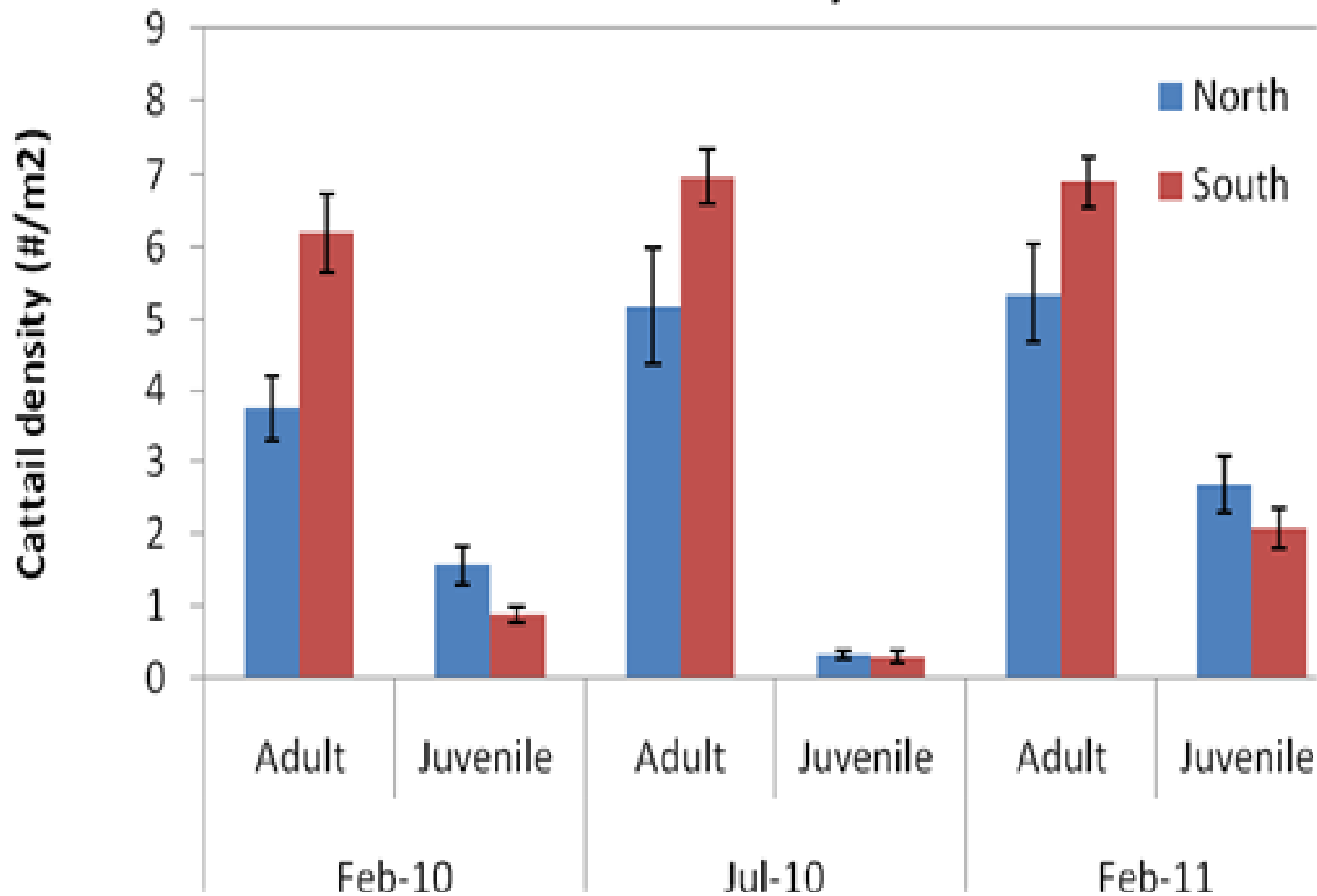
STA 3/4 – Cell 1A Drawdown

*Revitalization of Emergent Vegetation
Cover*





Cell 1A of STA-3/4













Ongoing measures to improve and maintain performance

- Eliminate hydraulic short circuits
- Enhance vegetation cover and health
- Evaluate complementary plant species and mechanisms