



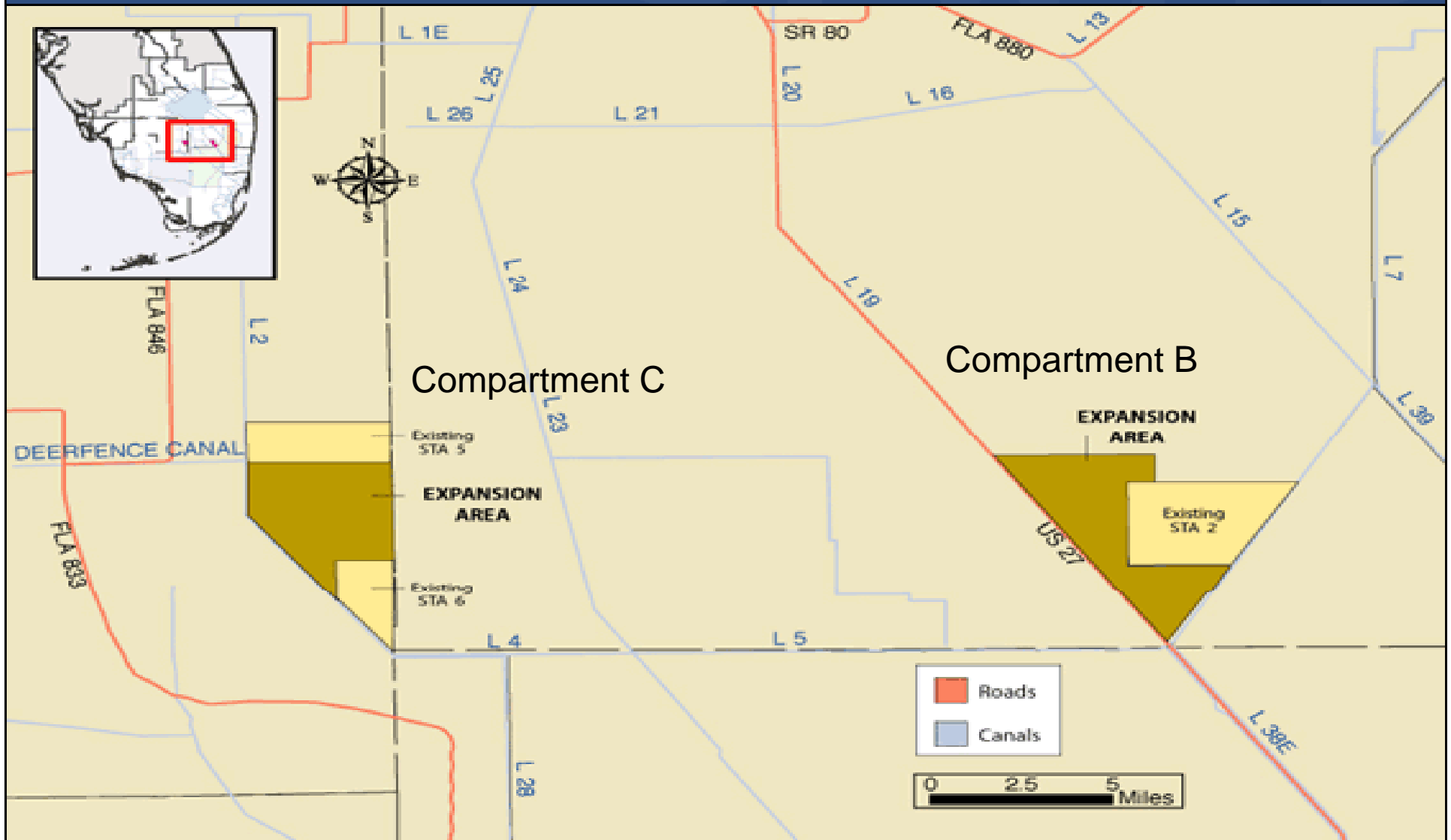
Compartment B Buildout and Compartment C Buildout Stormwater Treatment Areas Update

**Quarterly Communications Meeting on the
Long-Term Plan for Achieving Water Quality Goals for the
Everglades Protection Area Tributary Basins**

June 1, 2011

*Octavio Castillo, P.E., Project Manager
Everglades Restoration Engineering Department
ocastill@sfwmd.gov*

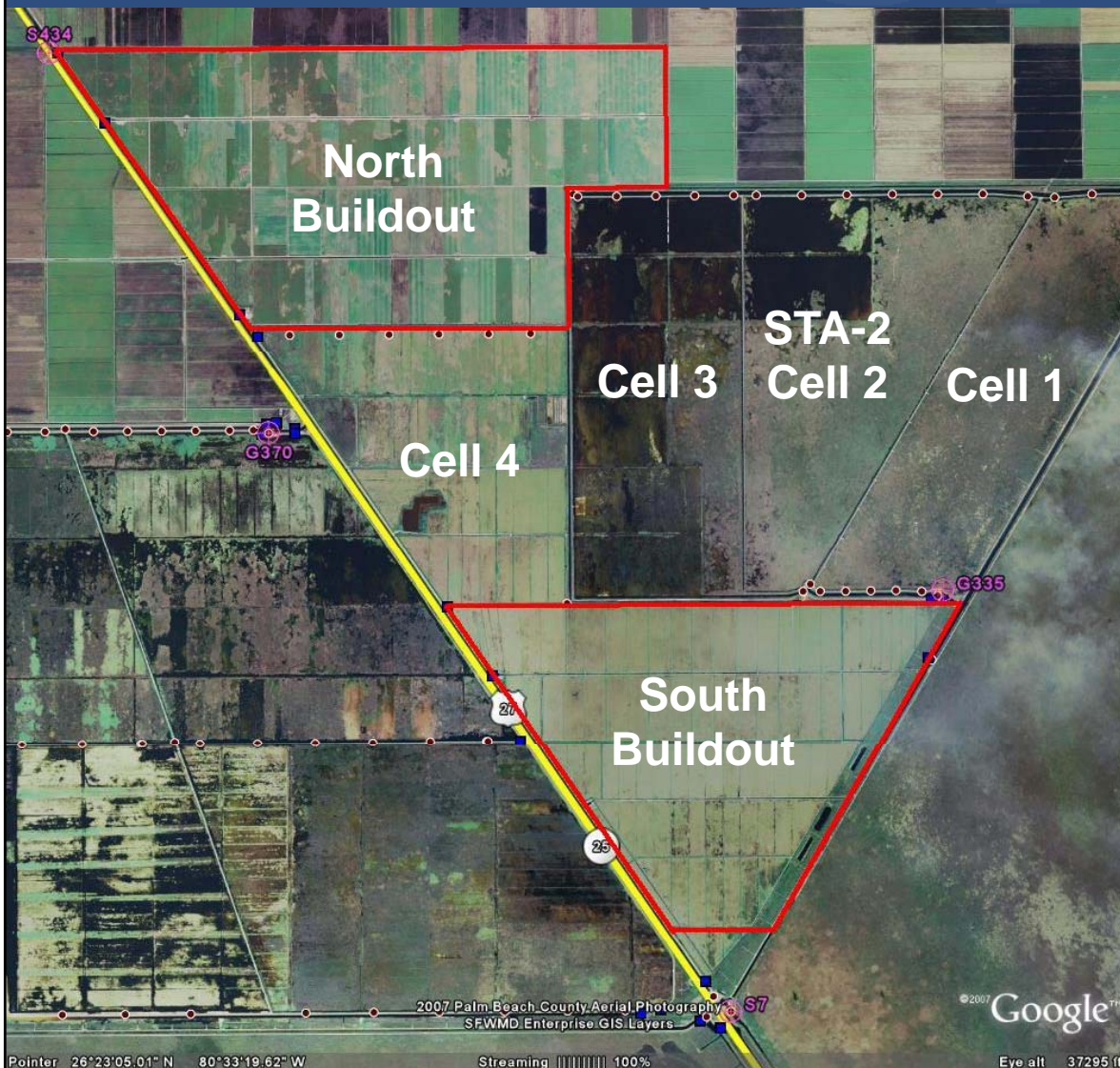
Location of Compartments B and C



Basis and Purpose

- Component of the Everglades Construction Project and the Everglades Protection Area Tributary Basins Long-Term Plan for Achieving Water Quality Goals (Long-Term Plan)
- Included in the 10-Year Strategic Plan and the Current Annual Plan
- Assist with Redistribution of Flows and Loads in the Stormwater Treatment Area (STA) System to Achieve Optimal Performance

Compartment B Buildout



- East of U.S. 27 and STA-3/4
- West of STA-2

Compartment B Buildout

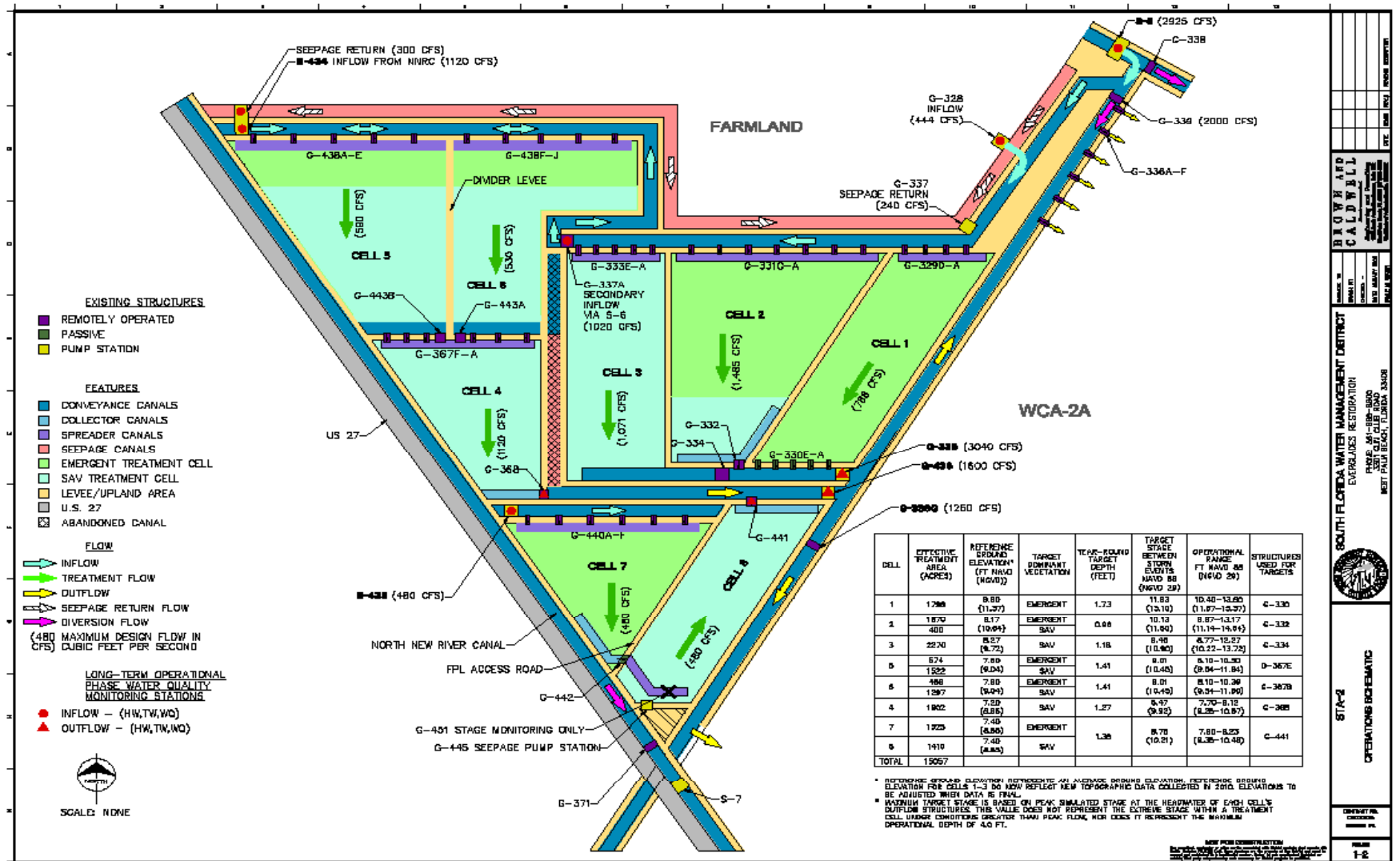
- Accomplishments to date:
 - Completed Final Design - STA, Pump Stations, G-434 & G-435 Bridges and L-6 Canal Modifications
 - Completed Pump Equipment Procurement Contract
 - Construction Permits Received
 - Continued Construction – North and South Buildout STAs
 - Issued Notice to Proceed (NTP) June 1, 2009 for North and South Buildouts
 - Achieved Flow Capable Milestone for the North & South Buildout STAs - December 2010
 - Continued Construction – G-435, G-434 and G-436 Pump Stations
 - Issued NTP September 14 & 17, 2009
 - Completed Superstructure at G-435, G-434 & G-436 Pump Stations
 - Installed Pumping Equipment
 - Completed Construction – Bridges at G-434 & G-435

Compartment B Buildout

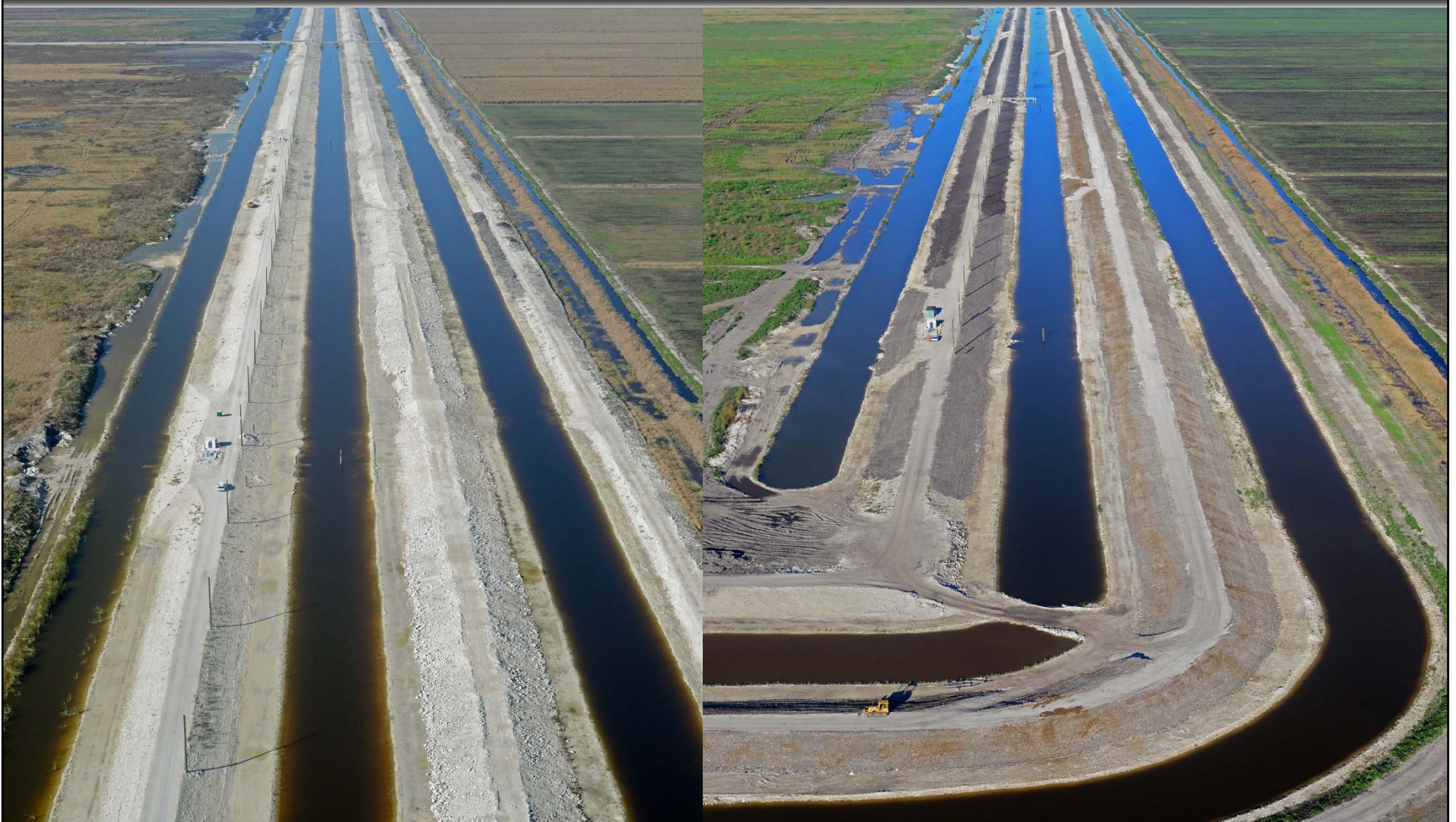
- What's next:
 - Continue Construction of STA – Electric and Communications
 - Continue Construction of G-434, G-435, and G-436 Pump Stations

- Construction Completion Schedule
 - North Buildout and South Buildout STAs August 31, 2011
 - G-434, G-435, & G-436 Pump Stations Feb. 28, 2012

Compartment B Buildout



EAA Compartment B STA North Buildout North Levees – Jan 2011 & April 2011



EAA Compartment B STA North Buildout G-443A & B – Jan 2011 & April 2011



G-434 Pump Station Jan 2011 & April 2011



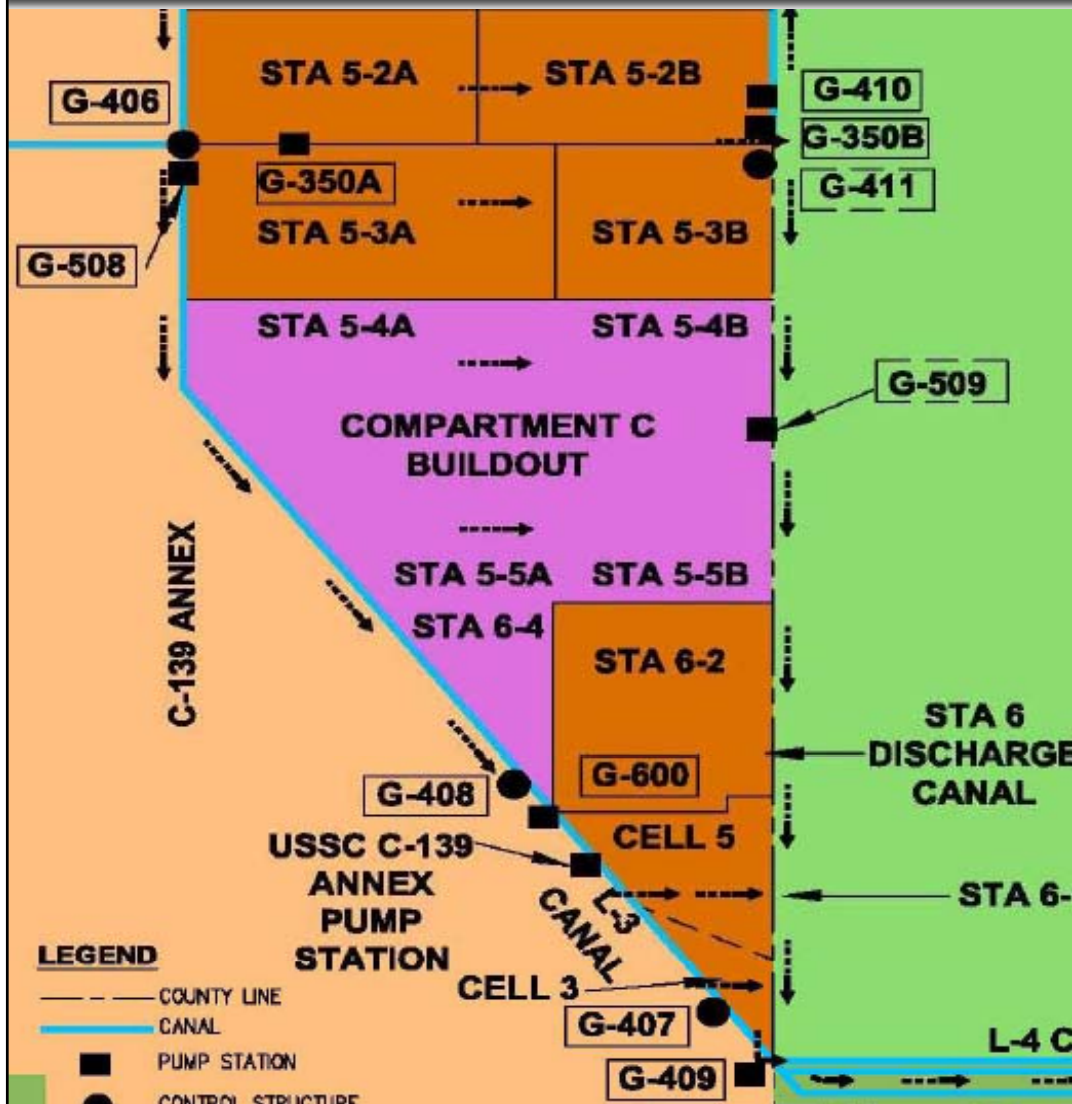
G-435 Pump Station Jan 2011 & April 2011



G-436 Pump Station Jan 2011 & April 2011

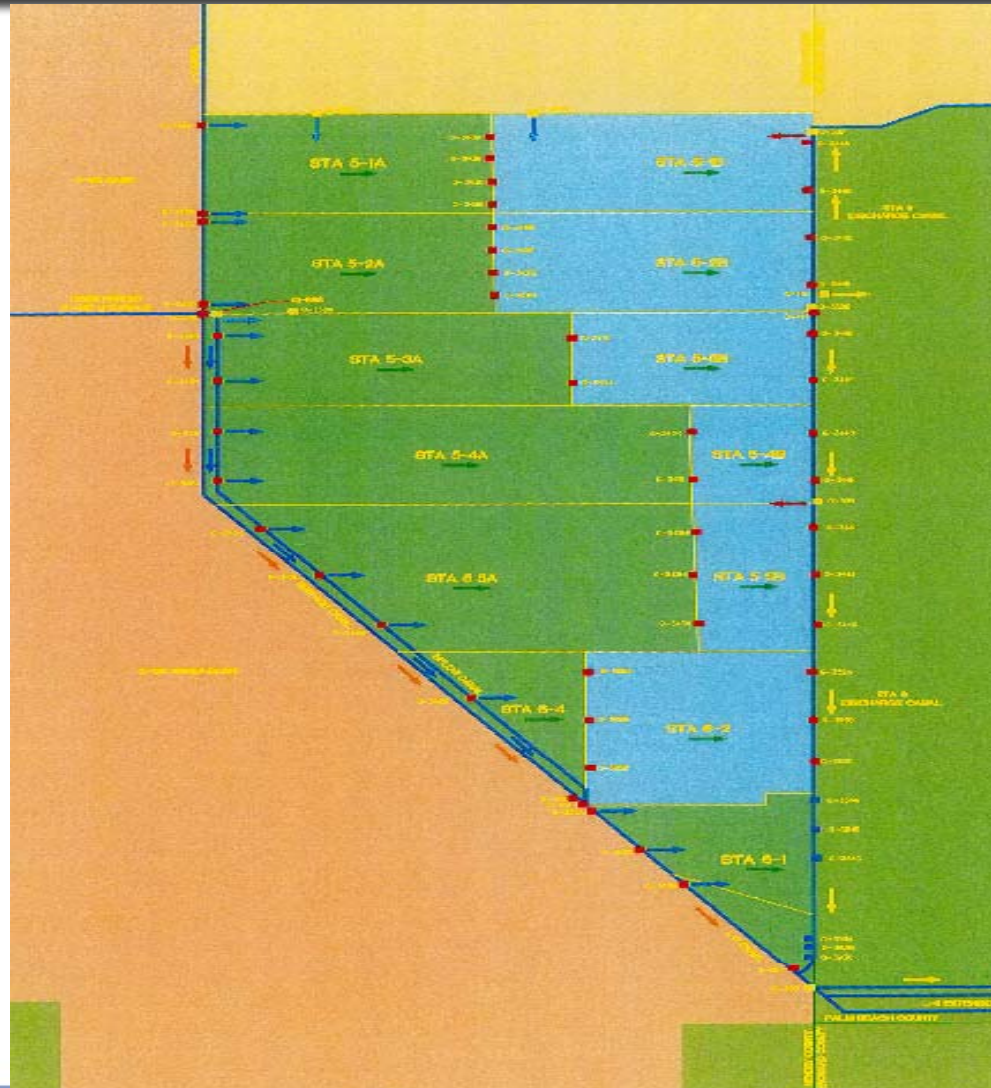


Compartment C Buildout



- East of Feeder Canal, L-28 and C-139 Basins
- West of Rotenberger Wildlife Management Area

Compartment C Buildout



Compartment C Buildout

- Accomplishments to date:
 - Completed Final Design-STA
 - Completed Final Design-Pump Station
 - Completed Pump Equipment Procurement Contract
 - U.S. Army Corps of Engineers Completed Record of Decision and Compartment C 404 Permit Prior to March 2009 Governing Board
 - U.S. Department of Interior Land Use Change Received
 - Continued Construction of STA
 - Issued NTP April 6, 2009
 - Achieved Flow Capable Milestone December 2010
 - Completed Construction of Gates and Structures
 - Continued Construction of G-508 Pump Station
 - Issued NTP September 1, 2009
 - Installed Diesel and Electric Pumps

Compartment C Buildout

- What's Next:
 - Continue Construction of STA – Electric and Communication
 - Continue Construction of G-508 Pump Station

- Construction Completion Schedule
 - STA August 15, 2011
 - G-508 Pump Station March 1, 2012

EAA Compartment C STA Buildout G-408 – Jan 2011 & April 2011



EAA Compartment C STA Buildout G-509 Pump Station – Dec 2010 & April 2011



G-508 Pump Station – Jan 2011



G-508 Pump Station – April 2011



Questions?

