



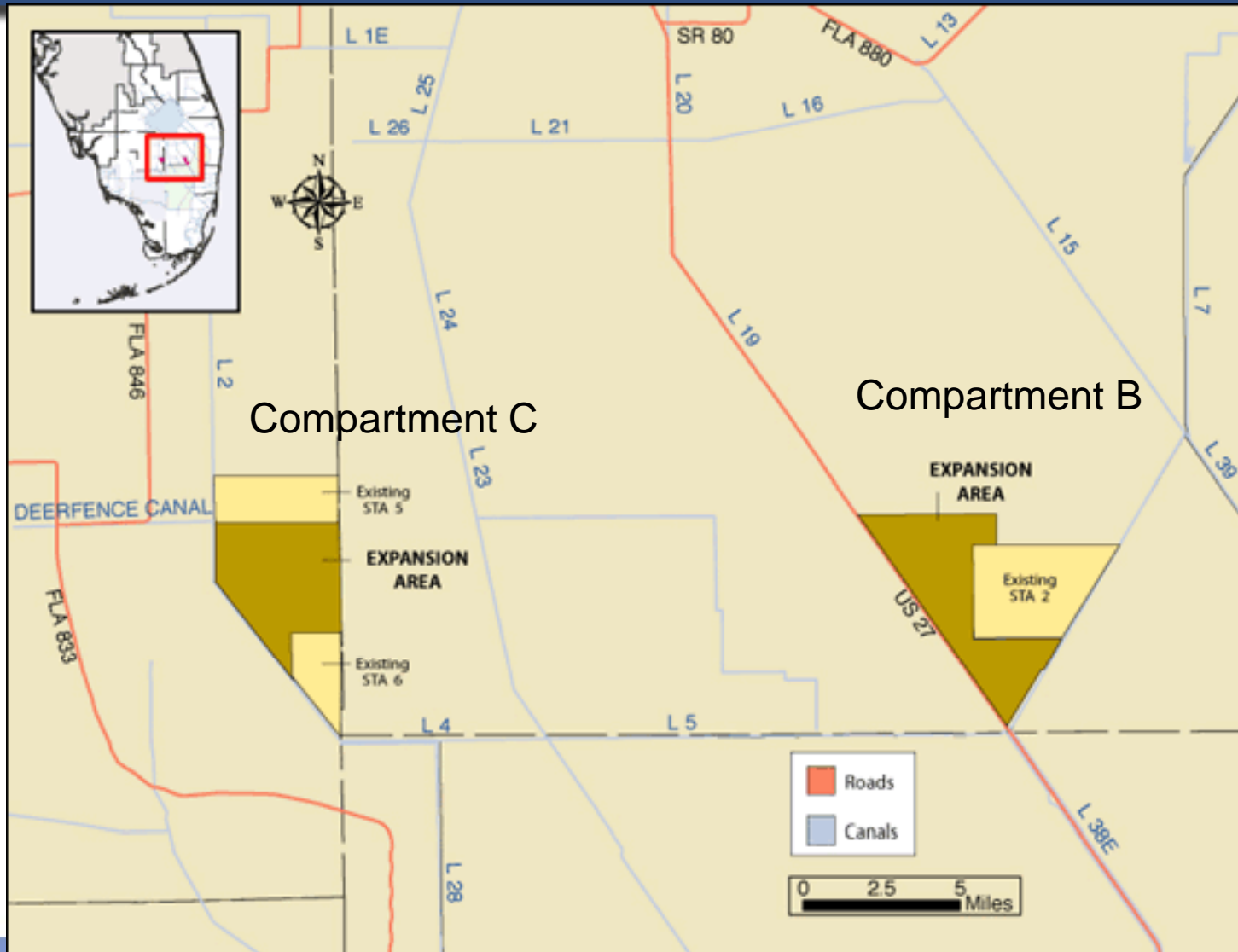
Compartment B Buildout and Compartment C Buildout Stormwater Treatment Areas Update

Quarterly Communications Meeting on the
Long-Term Plan for Achieving Water Quality Goals for the
Everglades Protection Area Tributary Basins

December 1, 2009

*Matthew Alexander, P.E., Project Manager
Everglades Restoration Engineering Department
malexand@sfwmd.gov*

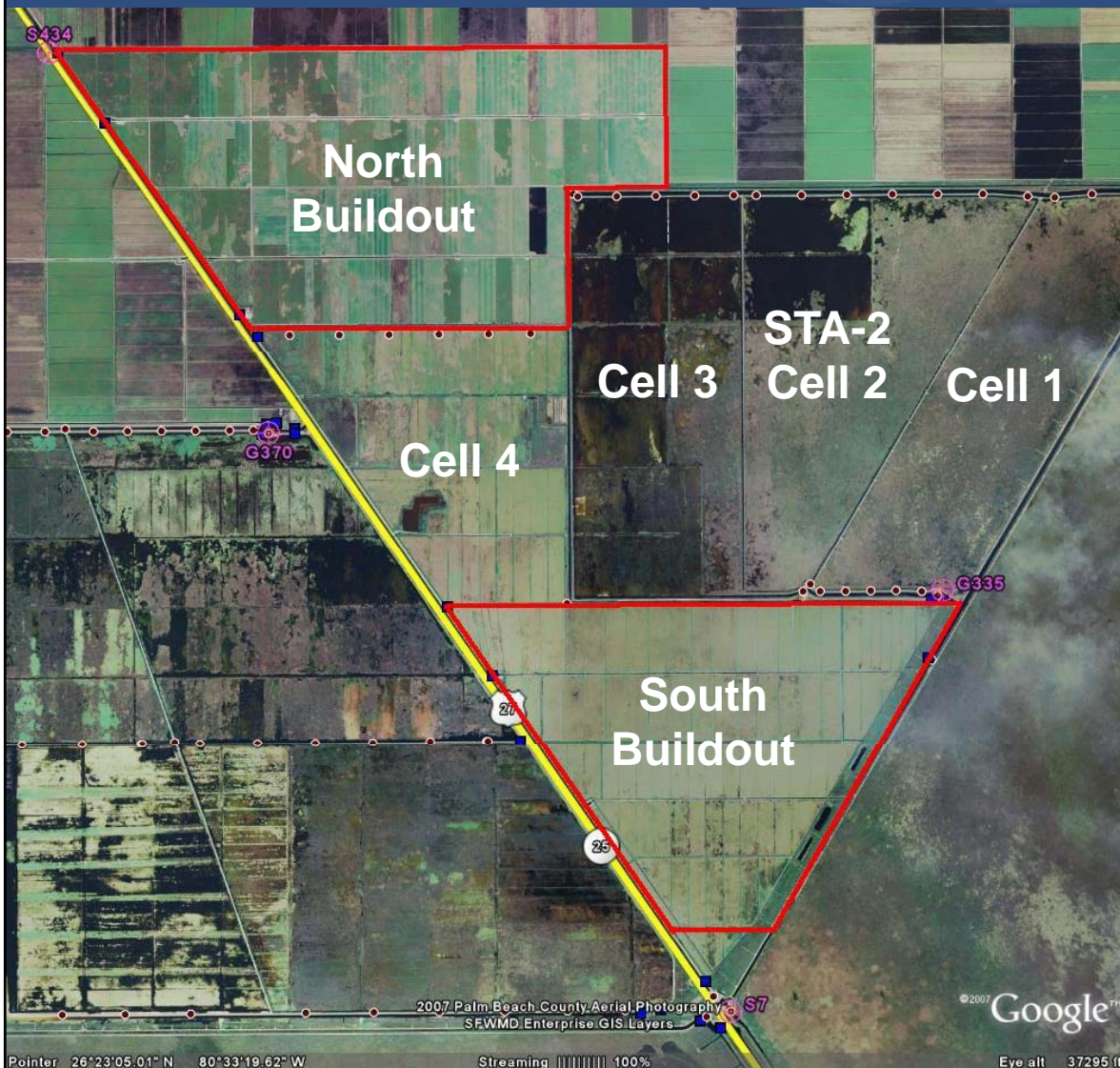
Locations of Compartments B and C



Basis and Purpose

- Component of the Everglades Construction Project and the Everglades Protection Area Tributary Basins Long-Term Plan for Achieving Water Quality Goals (Long-Term Plan)
- Included in the 10-Year Strategic Plan and the current Annual Plan
- Assist with Redistribution of Flows and Loads in the Stormwater Treatment Area (STA) System to achieve optimal performance

Compartment B Buildout



- East of U.S. 27 and STA-3/4
- West of STA-2

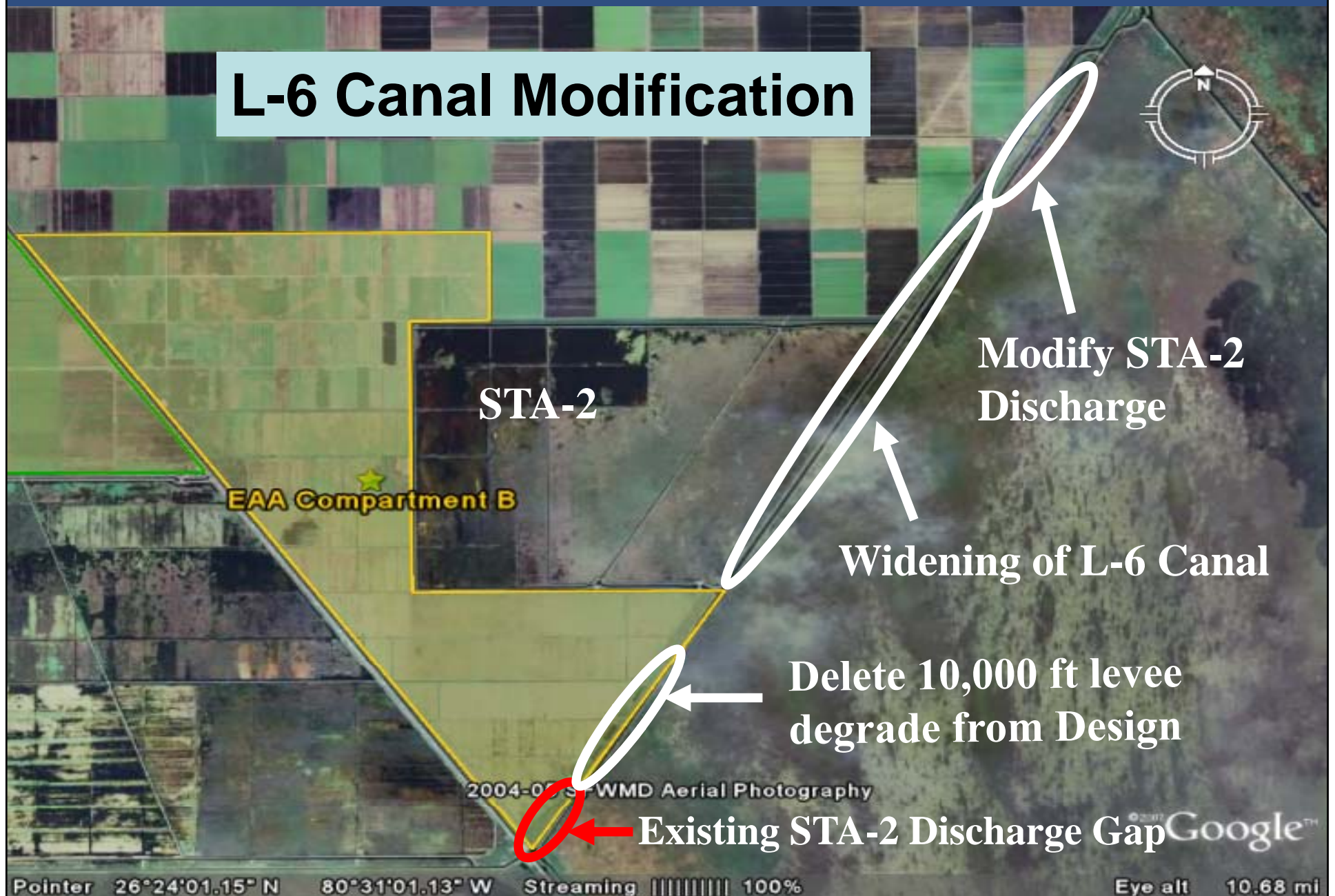
Compartment B Buildout

- Accomplishments to date:
 - Completed Final Design - Civil Works
 - Completed Final Design - Pump Stations
 - Completed Pump Equipment Procurement Contract
 - Construction Permits Received
 - Started Construction – Civil Works
 - Issued Notice to Proceed (NTP) June 1, 2009 for North and South Buildouts
 - Start Construction – G-435, G-434 and G-436 Pump Stations
 - Issued NTP September 14 & 17, 2009

Compartment B Buildout

- What's next:
 - Re-Design of project discharge at L-6 Canal to Water Conservation Area 2A
 - Pump Equipment Procurement Delivery
 - Continue construction of Civil Works
 - Start construction of G-434, G-435, and G-436 pump stations
 - Design of Inflow Canal Bridges at G-434 and G-435
- Construction Completion
 - Flow Capable Civil Works – December 31, 2010
 - Permanent Pump Stations January, 2012

L-6 Canal Modification



L-6 Canal Modification

- Conceptual Design received July 2, 2009
- Final Geotechnical Report received October 14, 2009
- 60% Design received September 18, 2009
- Pre-Final Design due December 21, 2009
- Final Design due February 19, 2010
- Bid Opening May 2010
- Contract Award May 2010 and NTP June 2010

North Buildout
looking west





North Buildout
looking west

G-438J Gate Section



South Buildout
looking west

Cell 4

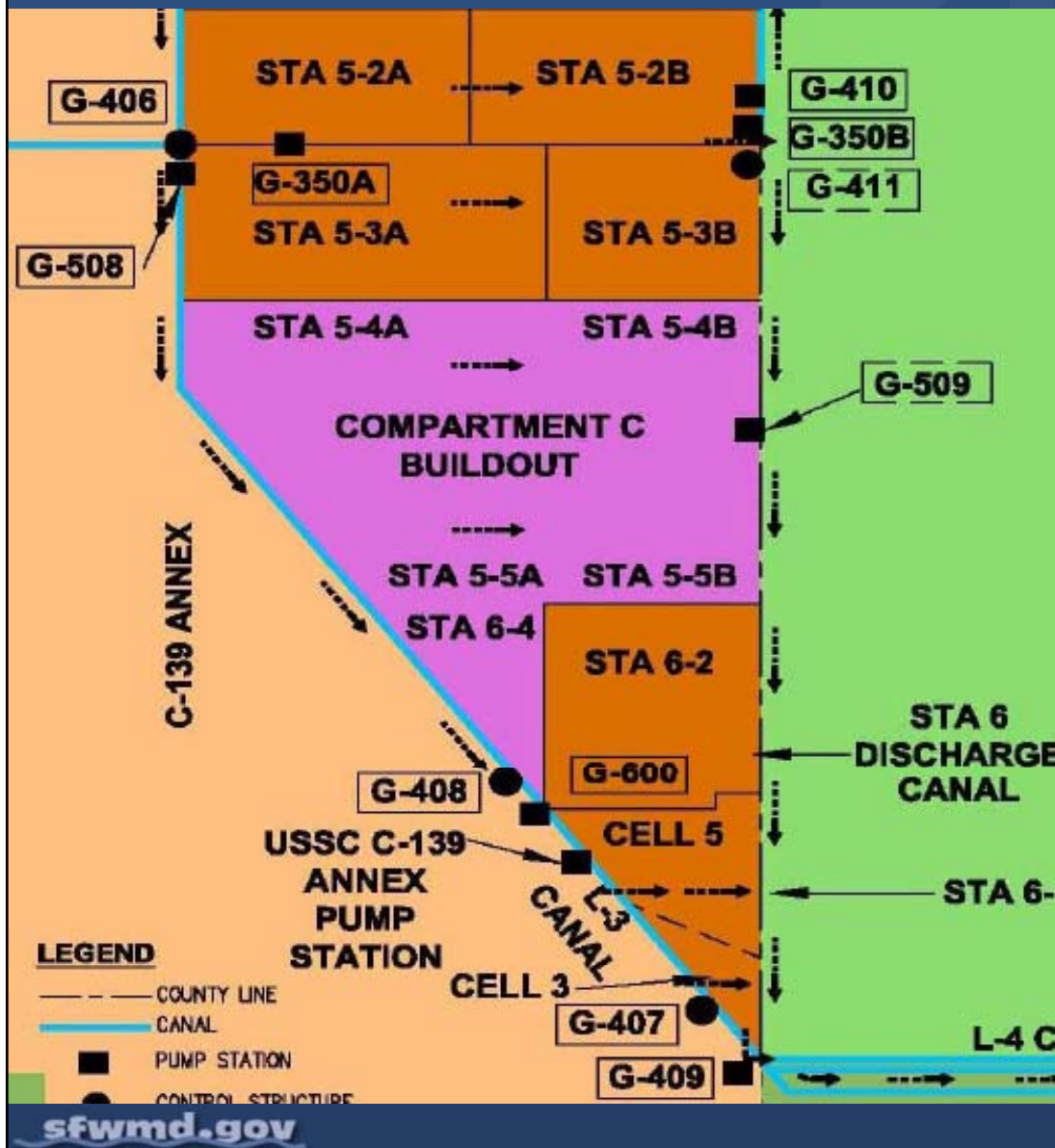
Cell 3



G-435 Inflow Pump Station – looking west



Compartment C Buildout



- East of Feeder Canal, L-28 and C-139 Basins
- West of Rotenberger Wildlife Management Area

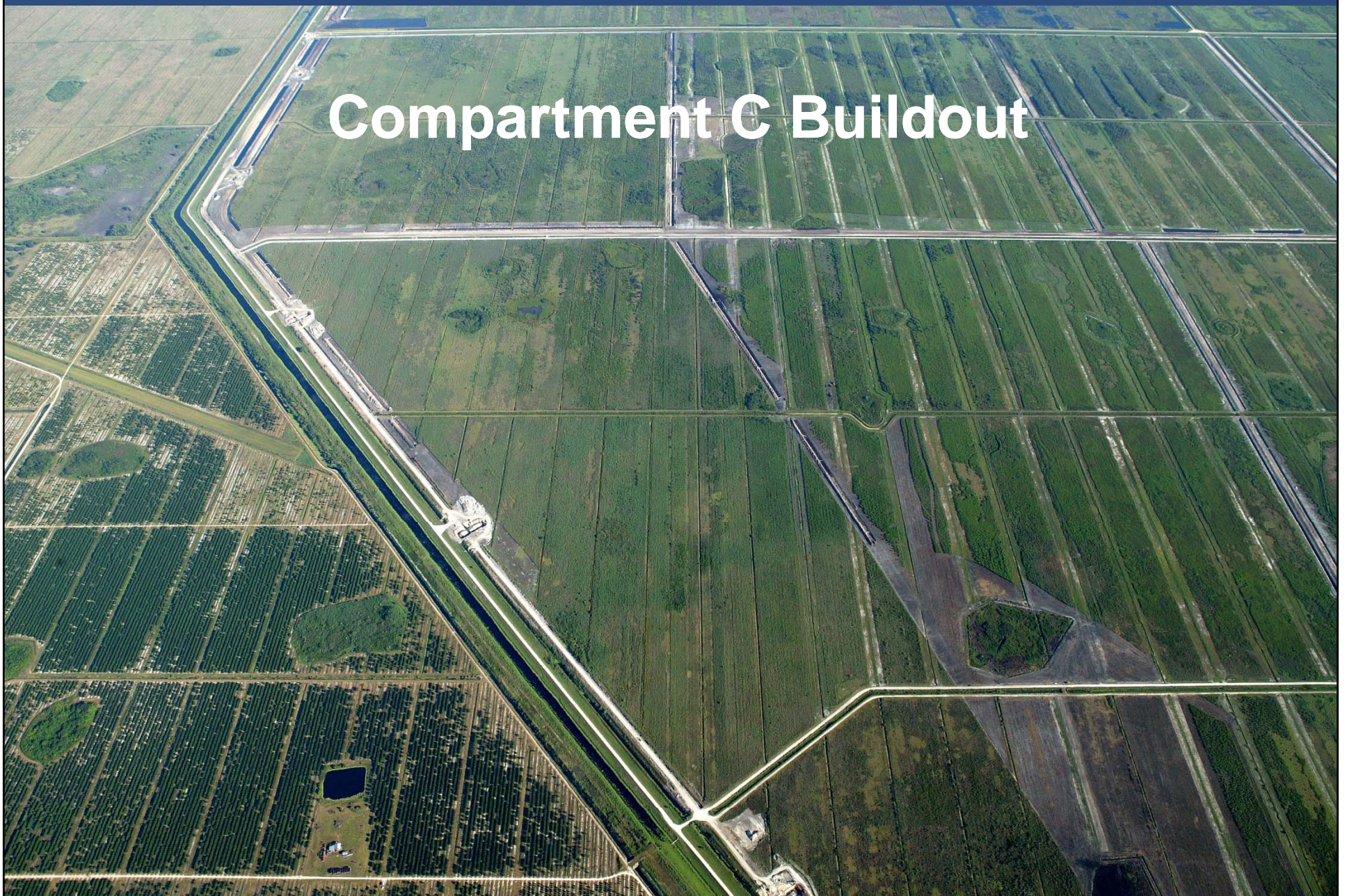
Compartment C Buildout

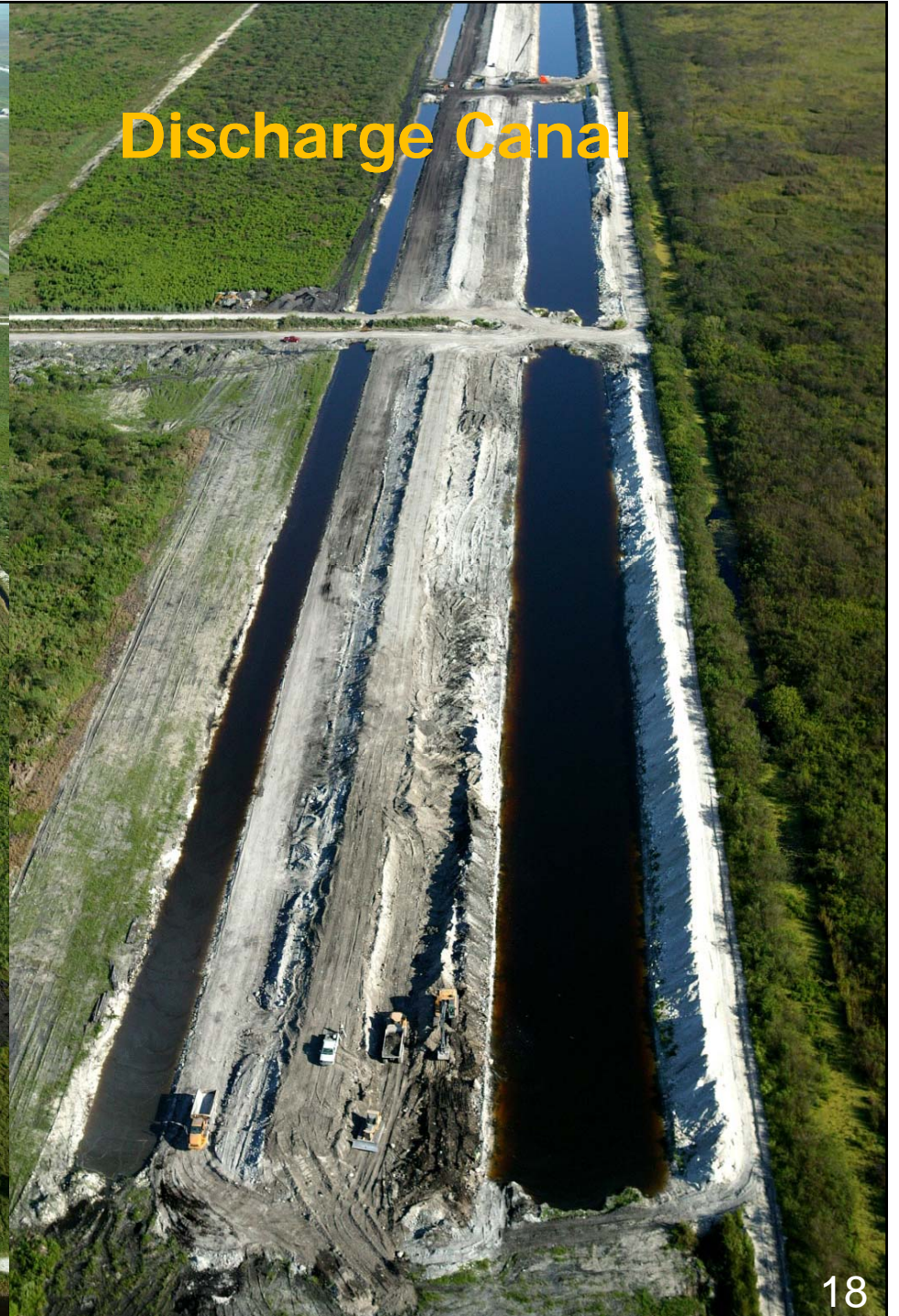
- Accomplishments to date:
 - Completed Final Design-Civil Works
 - Completed Final Design-Pump Station
 - Completed Pump Equipment Procurement Contract
 - US Army Corps of Engineers completed Record of Decision and Compartment C 404 permit prior to March 2009 Governing Board
 - U.S Department of Interior Land Use Change received
 - Started Construction of Civil Works
 - Issued NTP April 6, 2009
 - Started construction of G-508 pump station
 - Issued NTP September 1, 2009

Compartment C Buildout

- What's Next:
 - Pump Equipment Procurement Delivery
 - Continue construction of Civil Works
 - Continue construction of G-508 pump station
- Construction Completion
 - Flow Capable Civil Works December 31, 2010
 - G-508 Pump Station December 2011

Compartment C Buildout





G-408



G-342M



G-342N



Trench for underground high-voltage electric cable



11.18.2009 13:35

Spreader Canal



Inflow Canal



Intermediate Collection Canal



Thank you

