

Application of the Lake Okeechobee Regulation Schedule (LORS2008) on 11/7/2016 (ENSO Neutral Condition)

Lake Okeechobee Net Inflow Outlook:

The Lake Okeechobee Net Inflow Outlook has been computed using 4 methods: Croley's method¹, the SFWMD empirical method², a sub-sampling of Neutral years³ and a sub-sampling of warm years of the Atlantic Multi-decadal Oscillation (AMO) in combination with Neutral ENSO years⁴. The results for Croley's method and the SFWMD empirical method are based on the [CPC Outlook](#).

Table of the Lake Okeechobee Net Inflow Outlooks in feet of equivalent depth. All methods are updated on a weekly basis with observed net inflow for the current month.

Season	Croley's Method ^{1*}		SFWMD Empirical Method ²		Sub-sampling of Neutral ENSO Years ³		Sub-sampling of AMO Warm + Neutral ENSO Years ⁴	
	Value (ft)	Condition	Value (ft)	Condition	Value (ft)	Condition	Value (ft)	Condition
Current (Nov-Apr)	N/A	N/A	0.12	Dry	0.38	Dry	0.51	Dry
Multi Seasonal (Nov-Oct)	N/A	N/A	2.59	Wet	3.38	Wet	4.26	Wet

*Croley's Method Not Produced For This Report

See [Seasonal](#) and [Multi-Seasonal](#) tables for the classification of Lake Okeechobee Outlooks.

The recommended methods and values for estimating the Lake Okeechobee Net Inflow Outlook are shaded and should be used in the LORS2008 Release Guidance Flow Charts.

[Tributary Hydrologic Conditions Graph:](#)

-861 cfs 14-day running average for Lake Okeechobee Net Inflow through 11/6/2016. According to the classification in [Tributary Hydrologic Conditions](#) table, this condition is Dry.

-0.03 for Palmer Index on 11/5/2016.

According to the classification in [Tributary Hydrologic Conditions](#) table, this condition is Normal.

The wetter of the two conditions above is **Normal**.

[LORS2008 Classification Tables:](#)

Lake Okeechobee Stage on 11/7/2016

Lake Okeechobee Stage: **15.30 feet**

[USACE Report for Lake Okeechobee](#)

[Lake Okeechobee Stage Hydrograph](#)

Lake Okeechobee Management Zone/Band		Bottom Elevation (feet, NGVD)	Current Lake Stage
High Lake Management Band		17.25	
Operational Band	High sub-band	16.88	
	Intermediate sub-band	16.25	
	Low sub-band	14.50	← 15.30
Base Flow sub-band		12.84	
Beneficial Use sub-band		12.72	
Water Shortage Management Band			

[Part C of LORS2008: Discharge to WCA's](#)

Release Guidance Flow Chart Outcome: Up to maximum practicable releases to the WCAs if desirable or with minimum everglades impacts; otherwise no releases.

[Part D of LORS2008: Discharge to Tidewater](#)

Release Guidance Flow Chart Outcome: S-79 up to 450 cfs and S-80 up to 200 cfs

Technical Input Summaries from:

- [Lake Okeechobee Division](#)
- [Coastal Ecosystems](#)
- [Everglades Ecosystems Division](#)
- [Water Supply Department](#)
- [Water Resource Management Release Recommendation](#)
- [Kissimmee Watershed Environmental Conditions](#)
- [Operations Department](#)

[Back to Lake Okeechobee Operations Main Page](#)

[Back to U.S. Army Corps of Engineers LORSS Homepage](#)

LORS2008 Implementation on 11/7/2016 (ENSO Neutral Condition):

Status for week ending 11/7/2016:

District wide, Raindar rainfall was 0.00 inches for the week. Lake stage on 11/7/2016 was 15.30 ft, down 0.19 ft from last week.

The updated October 2016 SFWMM Dynamic Position Analysis [percentile graph](#) for Lake Okeechobee show that the current lake stage is in the Low Operational Sub-Band.

The LORS2008 tributary [indices](#) are classified as **Normal**. The PDSI indicates normal condition and the LONIN is Dry. The classification is based on the wetter of the two.

Water Supply Risk Evaluation

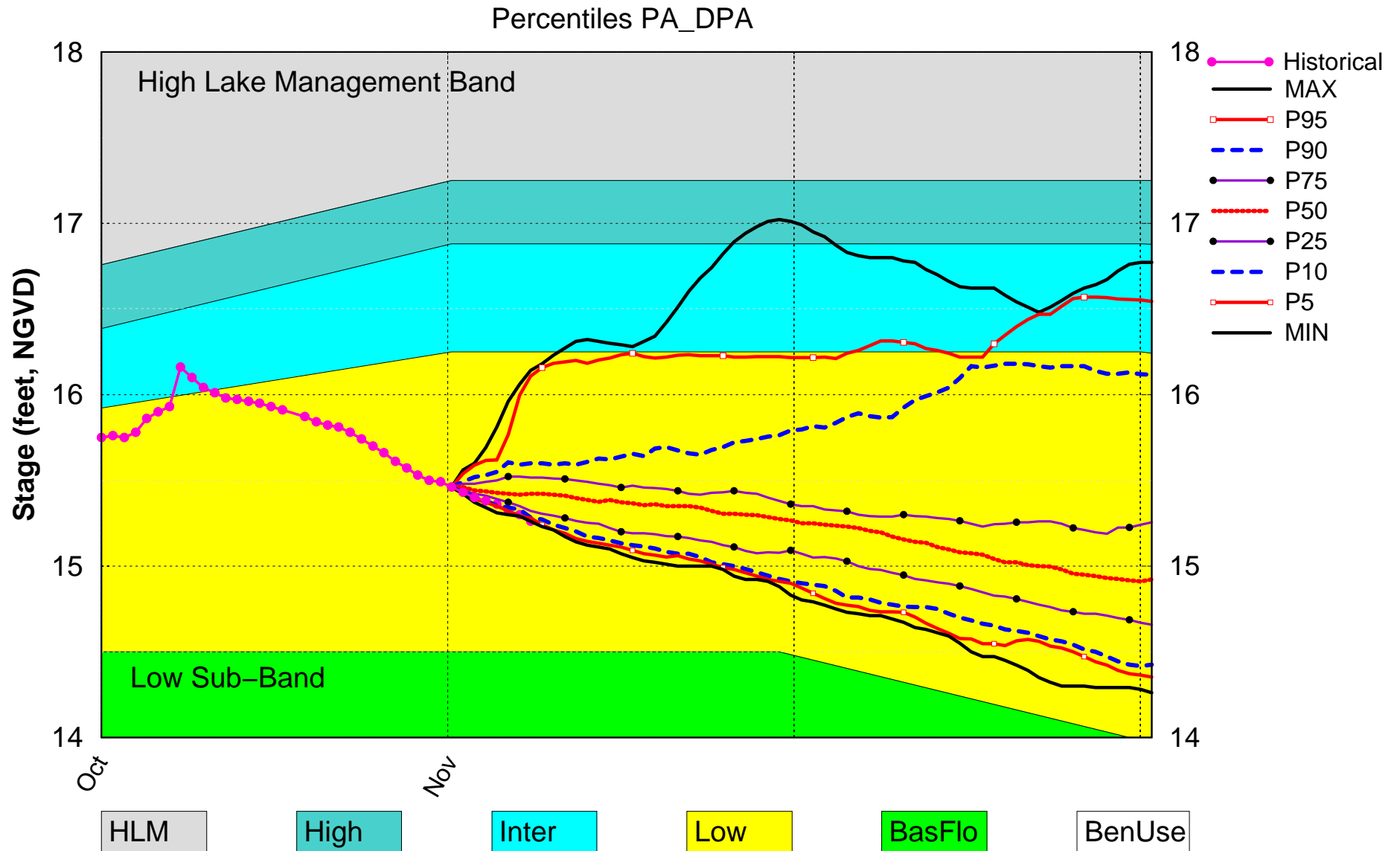
Area	Indicator	Value	Color Coded Scoring Scheme
LOK	Projected LOK Stage for the next two months	Low Sub-Band	L
	Palmer Index for LOK Tributary Conditions	-0.03 (Normal)	L
	CPC Precipitation Outlook	1 month: Below Normal	M
		3 months: Below Normal	M
	LOK Seasonal Net Inflow Outlook ENSO Neutral Years	0.38 ft (Dry)	M
	LOK Multi-Seasonal Net Inflow Outlook ENSO Neutral Years	3.38 ft (Wet)	L
			L
WCAs	WCA 1: Site 1-7, Site 1-8T, & Site 1-9 Average	Above Line 1 (16.81 ft)	L
	WCA 2A: Site 2-17 HW	Above Line1 (13.01 ft)	L
	WCA-3A: 3 Station Average (Site 63, 64 and 65)	Above Line 1 (10.45 ft)	L
LEC	Service Area 1	Year-Round Irrigation Rule in effect	L
	Service Area 2	Year-Round Irrigation Rule in effect	L
	Service Area 3	Year-Round Irrigation Rule in effect	L

Note: The water supply risk classification based on the Palmer index, as well as the LOK seasonal and multi-seasonal net inflow outlooks use slightly different classification intervals than those used by the 2008-LORS.

[Back to Lake Okeechobee Operations Main Page](#)

[Back to U.S. Army Corps of Engineers LORSS Homepage](#)

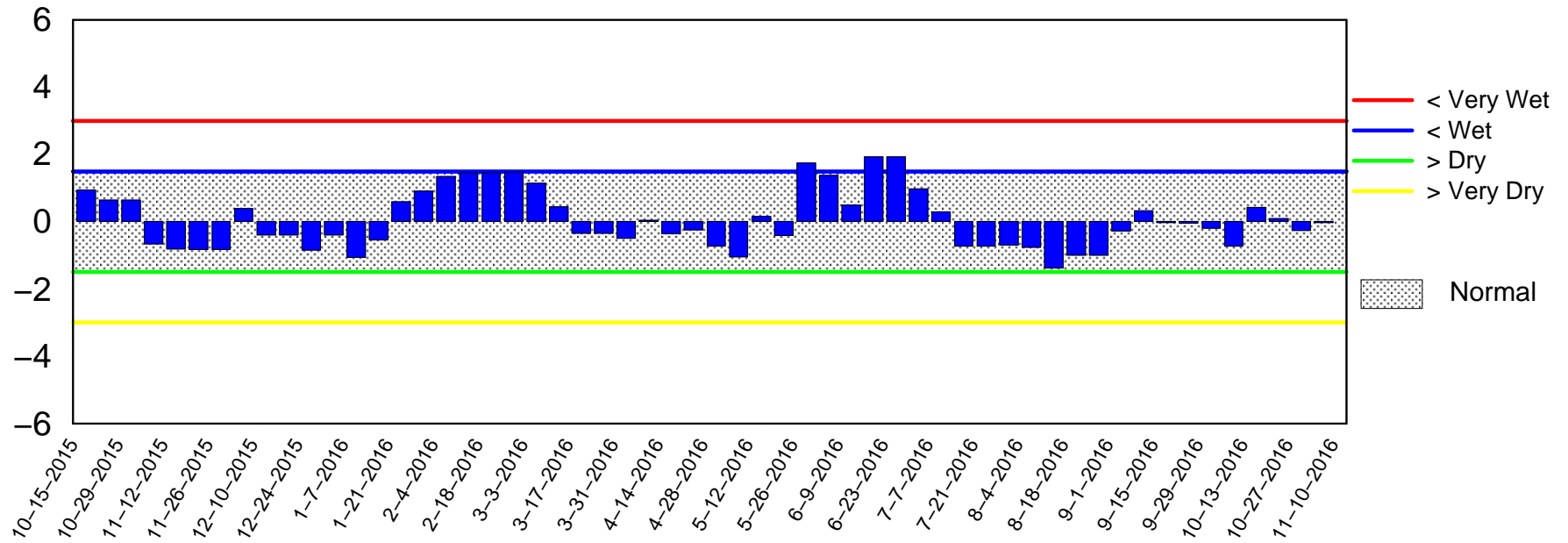
Lake Okeechobee SFWMM Nov 2016 Dynamic Position Analysis



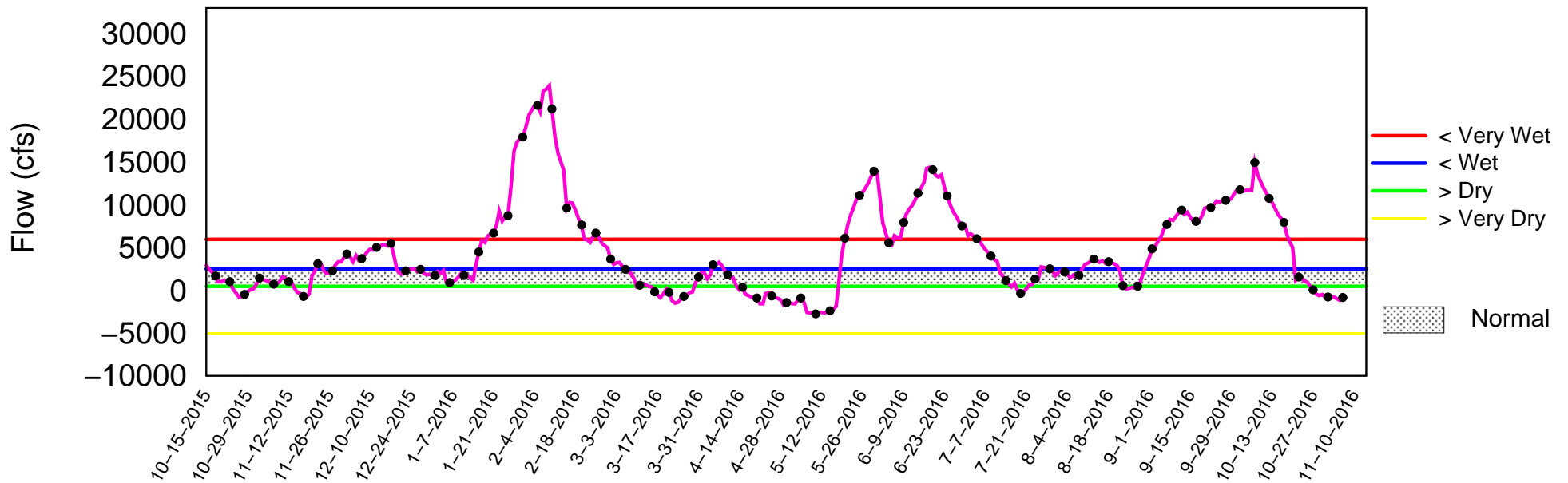
(See assumptions on the Position Analysis Results website)

Tributary Basin Condition Indicators as of November 7 2016

Palmer Index



Lake Okeechobee Net Inflow (LONIN) 14-day Running Average



Mon Nov 7 16:23:12 2016

2008 LORS

Part C: Establish Allowable Lake Okeechobee Releases to the Water Conservation Areas

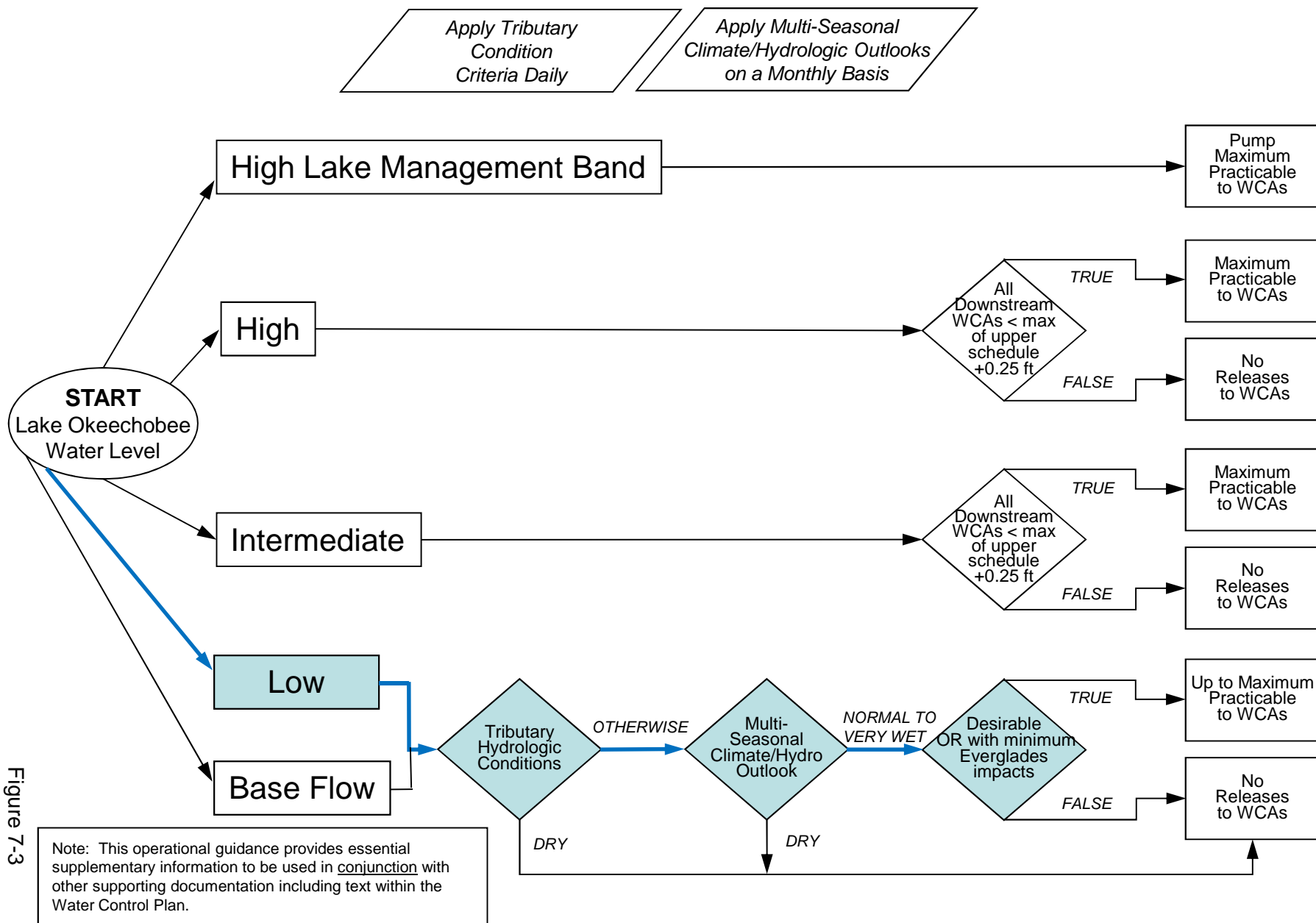


Figure 7-3

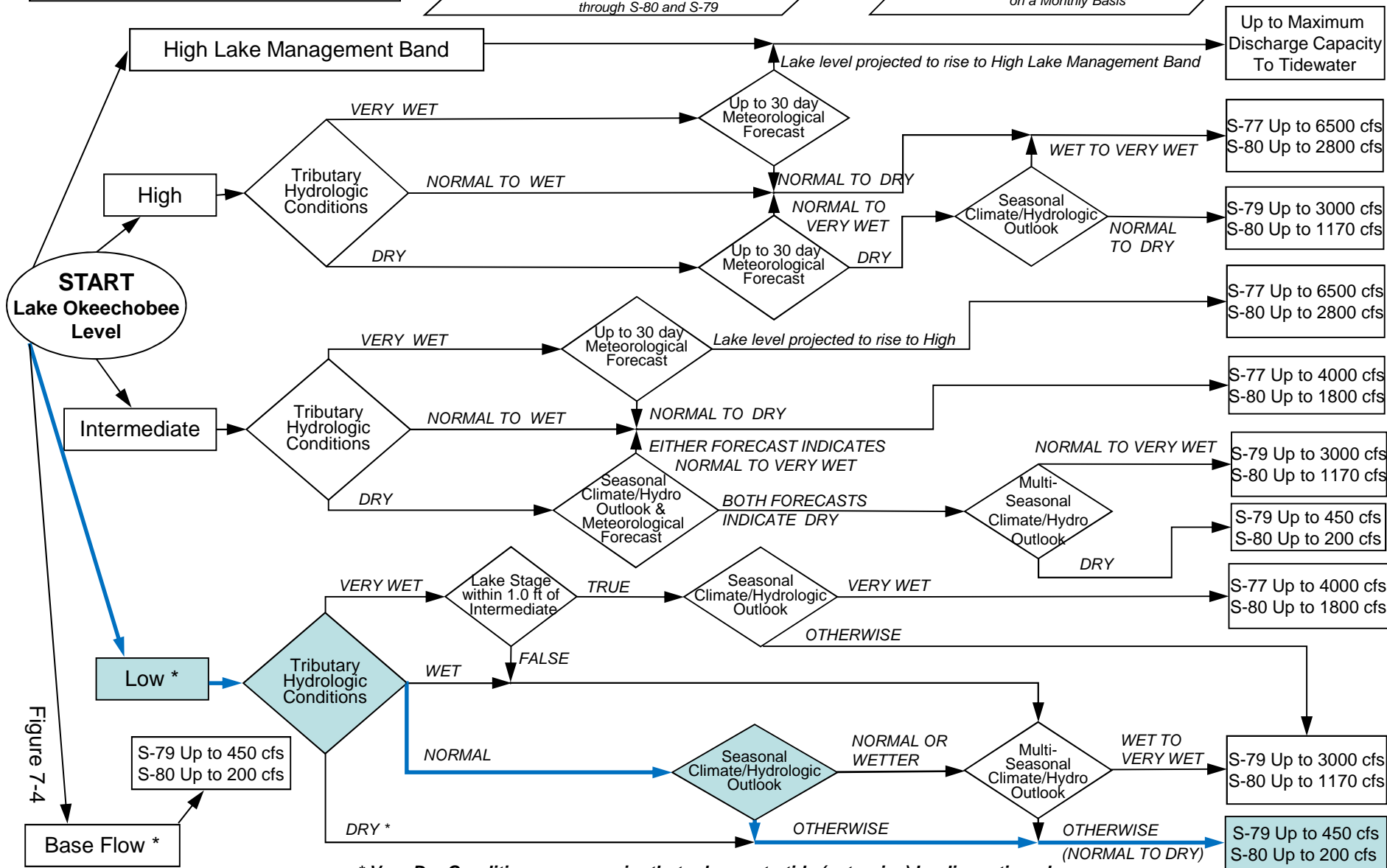
2008 LORS

Part D: Establish Allowable Lake Okeechobee Releases to Tide (Estuaries)

Note: This operational guidance provides essential supplementary information to be used in conjunction with other supporting documentation including text within the Water Control Plan.

When conducting Base Flow releases, flows can be distributed East and West up to 650 cfs as needed to minimize impacts or provide benefits through S-80 and S-79

Apply Meteorological Forecasts on a Weekly Basis; apply Seasonal and Multi-Seasonal Climate/Hydrologic Outlooks on a Monthly Basis

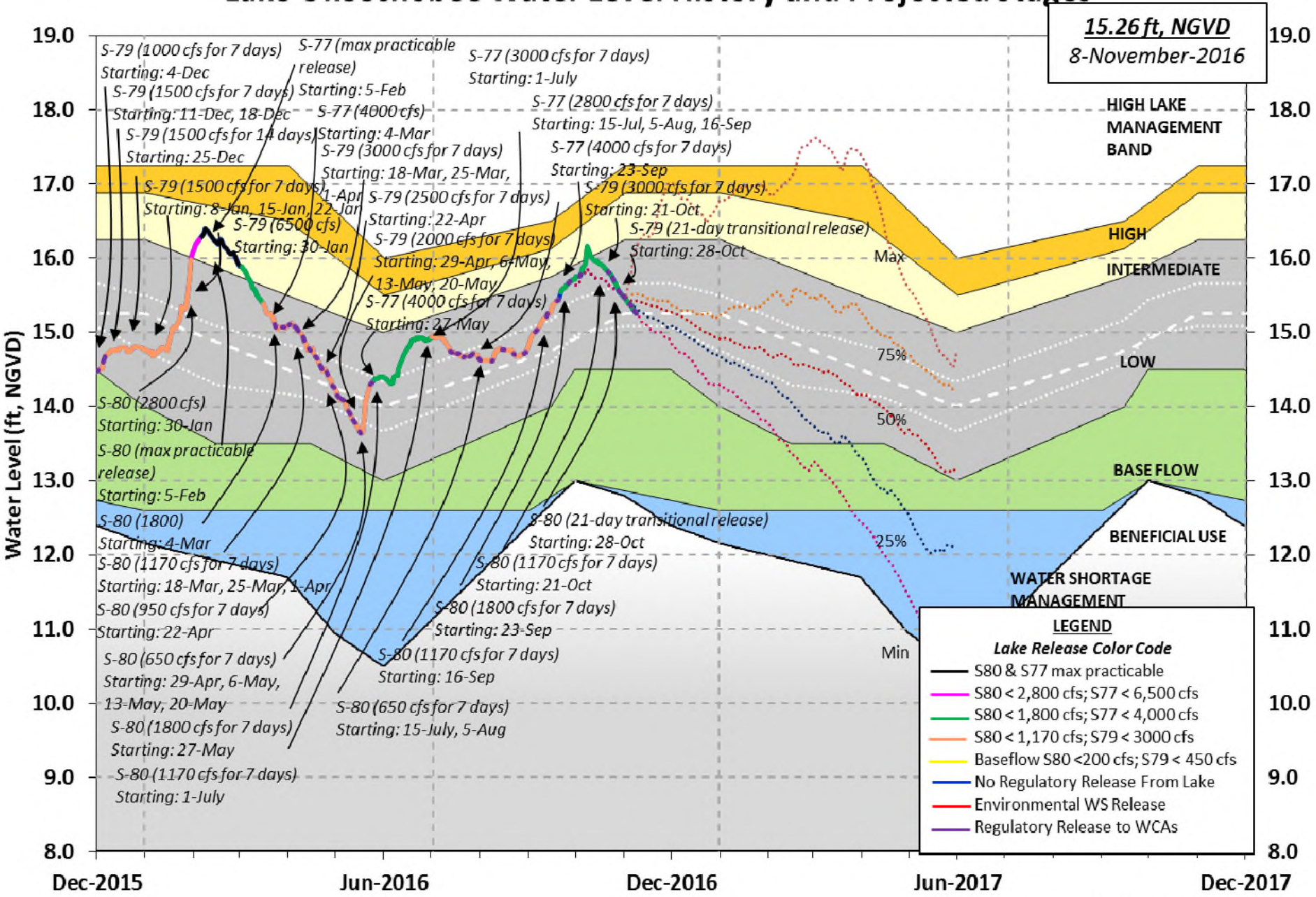


* Very Dry Conditions may require that releases to tide (estuaries) be discontinued

Figure 7-4

Lake Okeechobee Water Level History and Projected Stages

15.26 ft, NGVD
8-November-2016



LEGEND

Lake Release Color Code

- S80 & S77 max practicable
- S80 < 2,800 cfs; S77 < 6,500 cfs
- S80 < 1,800 cfs; S77 < 4,000 cfs
- S80 < 1,170 cfs; S79 < 3000 cfs
- Baseflow S80 < 200 cfs; S79 < 450 cfs
- No Regulatory Release From Lake
- Environmental WS Release
- Regulatory Release to WCAs

U. S. Army Corps of Engineers, Jacksonville District
 Lake Okeechobee and Vicinity Report
 ** Preliminary Data - Subject to Revision **

Data Ending 2400 hours 06 NOV 2016

Okeechobee Lake Regulation	Elevation	Last Year	2YRS Ago
	(ft-NGVD)	(ft-NGVD)	(ft-NGVD)
*Okeechobee Lake Elevation	15.30	14.47	15.68 (Official Elv)
Bottom of High Lake Mngmt=	17.25	Top of Water Short Mngmt=	12.72
Currently in Operational Management Band			

Simulated Average LORS2008 [1965-2000]	13.96
Difference from Average LORS2008	1.34

06NOV (1965-2007) Period of Record Average	15.03
Difference from POR Average	0.27

Today Lake Okeechobee elevation is determined from the 4 Int & 4 Edge stations

++Navigation Depth (Based on 2007 Channel Condition Survey) Route 1 ÷ 9.24'
 ++Navigation Depth (Based on 2008 Channel Condition Survey) Route 2 ÷ 7.44'
 Bridge Clearance = 49.28'

4 Interior and 4 Edge Okeechobee Lake Average (Avg-Daily values):

L001	L005	L006	LZ40	S4	S352	S308	S133
15.10	15.37	15.34	15.30	15.45	15.46	15.24	15.15

*Combination Okeechobee Avg-Daily Lake Average = 15.30
 (*See Note)

Okeechobee Inflows (cfs):

S65E	903	C5	-92	Fisheating Cr	27
S154	13	S191	0	S135 Pumps	0
S84	0	S133 Pumps	0	S2 Pumps	0
S84X	401	S127 Pumps	0	S3 Pumps	0
S71	0	S129 Pumps	0	S4 Pumps	0
S72	34	S131 Pumps	0		
Total Inflows:	1286				

Okeechobee Outflows (cfs):

S135 Culverts	0	S354	315	S77	1637
S127 Culverts	0	S351	512	S77Below	2009
S129 Culverts	0	S352	116	S308	2
S131 Culverts	0	L8 Canal Pt	237	S308Below	66
Total Outflows:	2819				

****S77 Structure outflow is being used to compute Total Outflow.
 ****S308 Structure outflow is being used to compute Total Outflow.

Okeechobee Pan Evaporation (inches):
 S77 0.20 S308 0.20
 Average Pan Evap x 0.75 Pan Coefficient = 0.15" = 0.01'

Lake Average Precipitation using NEXRAD: = 0.00" = 0.00'

Evaporation - Precipitation: = 0.15" = 0.01'
 Evaporation - Precipitation using Lake Area of 730 square miles
 is equal to 2944 cfs out of the lake.
 Lake Okeechobee (Change in Storage) Flow is -4336 cfs or -8600 AC-FT

Note: Headwater, tailwater, and stage values below are instantaneous values unless otherwise specified.

	Headwater	Tailwater		----- Gate Positions -----						
---	Elevation	Elevation	Disch	#1	#2	#3	#4	#5	#6	#7
#8	(ft-msl)	(ft-msl)	(cfs)	(ft)	(ft)	(ft)	(ft)	(ft)	(ft)	(ft)
(ft)										
	(I) see note at bottom									
North East Shore										
S133 Pumps:	13.47	15.20	0	0	0	0	0	0		(cfs)
S193:										
S191:	18.23	15.20	0	0.0	0.0	0.0				
S135 Pumps:	13.62	15.17	0	0	0	0	0			(cfs)
S135 Culverts:			0	0.0	0.0					
North West Shore										
S65E:	20.98	14.92	903	0.5	0.5	0.5	0.4	0.5	0.3	
S127 Pumps:	13.35	15.23	0	0	0	0	0	0		(cfs)
S127 Culvert:			0	0.0						
S129 Pumps:	12.98	15.34	0	0	0	0				(cfs)
S129 Culvert:			0	0.0						
S131 Pumps:	12.99	15.39	0	0	0					(cfs)
S131 Culvert:			0							
Fisheating Creek										
nr Palmdale		29.22	27							
nr Lakeport										
C5:	15.40	15.41	-92	5.3	5.3	5.3				
South Shore										
S4 Pumps:	10.83	15.44	0	0	0	0				(cfs)
S169:	15.41	10.84	0	0.0	0.0	0.0				

S310:	15.36		64						
S3 Pumps:	10.98	15.40	0	0	0	0			(cfs)
S354:	15.40	10.98	315	0.4	0.6				
S2 Pumps:	10.80	15.40	0	0	0	0	0		(cfs)
S351:	15.40	10.80	512	0.5	0.7	0.6			
S352:	15.41	10.86	116	0.0	0.3				
C10A:	-NR-	14.00		0.0	0.0	8.0	0.0	0.0	
L8 Canal PT		13.83	237						

S351 and S352 Temporary Pumps/S354 Spillway

S351:	10.80	15.40	512	-NR--NR--NR--NR--NR--NR-
S352:	10.86	15.41	116	-NR--NR--NR--NR-
S354:	10.98	15.40	315	-NR--NR--NR--NR-

Caloosahatchee River (S77, S78, S79)

S47B:	13.17	10.73		0.0	0.0
S47D:	10.76	10.76	16	6.0	

S77:

Spillway and Sector Flow:							
	15.33	10.84	1632	0.0	3.0	3.0	0.0
Flow Due to Lockages+:			5				

S77 Below USGS Flow Gage 2009

S78:

Spillway and Sector Flow:							
	10.86	2.79	1348	1.0	0.0	3.0	0.0
Flow Due to Lockages+:			14				

S79:

Spillway and Sector Flow:										
	2.89	1.58	1740	0.0	0.5	1.0	1.0	1.0	1.0	1.0

1.0

Flow Due to Lockages+:	10
Percent of flow from S77	94%
Chloride (ppm)	48

St. Lucie Canal (S308, S80)

S308:

Spillway and Sector Flow:							
	15.23	14.22	0	0.0	0.0	0.0	0.0
Flow Due to Lockages+:			2				

S308 Below USGS Flow Gage 66

S153:	19.21	13.99	0	0.0	0.0
-------	-------	-------	---	-----	-----

S80:

Spillway and Sector Flow:										
	14.26	1.55	0	0.0	0.0	0.0	0.0	0.0	0.0	0.0

Flow Due to Lockages+:	14
------------------------	----

Percent of flow from S308	NA %
---------------------------	------

Steele Point Top Salinity (mg/ml) ****
Steele Point Bottom Salinity (mg/ml) ****

Speedy Point Top Salinity (mg/ml) ****
 Speedy Point Bottom Salinity (mg/ml) ****

+ Flow Due to lockages is computed utilizing average daily headwater and tailwater along with total number of lockages for the day to calculate a volume which is then converted to an average discharge in cfs.

				----- Wind ---	
Daily Precipitation Totals	1-Day	3-Day	7-Day	Direction	
Speed	(inches)	(inches)	(inches)	(Degø)	
(mph)					
S133 Pump Station:	-NR-	0.00	0.00		
S193:	-NR-	0.00	0.00	-NR-	-NR-
Okeechobee Field Station:	-NR-	0.00	0.00		
S135 Pump Station:	-NR-	0.00	0.00		
S127 Pump Station:	-NR-	0.00	0.00		
S129 Pump Station:	-NR-	0.00	0.00		
S131 Pump Station:	-NR-	0.00	0.00		
S77:	0.00	0.00	0.01	38	1
S78:	0.01	0.01	0.01	77	2
S79:	0.00	0.00	0.00	158	2
S4 Pump Station:	-NR-	0.00	0.00		
Clewiston Field Station:	-NR-	0.00	0.00		
S3 Pump Station:	-NR-	0.00	0.00		
S2 Pump Station:	-NR-	0.00	0.00		
S308:	0.00	0.00	0.09	270	0
S80:	-NR-	0.01	0.22	107	7
Okeechobee Average	0.00	0.00	0.01		
(Sites S78, S79 and S80 not included)					

Oke Nexrad Basin Avg	0.00	0.00	0.02		

Okeechobee Lake Elevations	06 NOV 2016	15.30	Difference from
06NOV16			06NOV16
06NOV16 -1 Day =	05 NOV 2016	15.32	0.02
06NOV16 -2 Days =	04 NOV 2016	15.36	0.06
06NOV16 -3 Days =	03 NOV 2016	15.38	0.08
06NOV16 -4 Days =	02 NOV 2016	15.40	0.10
06NOV16 -5 Days =	01 NOV 2016	15.43	0.13
06NOV16 -6 Days =	31 OCT 2016	15.46	0.16
06NOV16 -7 Days =	30 OCT 2016	15.49	0.19
06NOV16 -30 Days =	07 OCT 2016	16.16	0.86
06NOV16 -1 Year =	06 NOV 2015	14.47	-0.83
06NOV16 -2 Year =	06 NOV 2014	15.68	0.38

Long Term Mean 30day Avearge ET for Lake Alfred (Inches) = -NR-

Lake Okeechobee Net Inflow (LONIN)

Average Flow over the previous 14 days					Avg-Daily Flow
06NOV16	Today =	06 NOV 2016	-860	MON	-1126
06NOV16	-1 Day =	05 NOV 2016	-1110	SUN	-5177
06NOV16	-2 Days =	04 NOV 2016	-948	SAT	107
06NOV16	-3 Days =	03 NOV 2016	-790	FRI	1466
06NOV16	-4 Days =	02 NOV 2016	-736	THU	-362
06NOV16	-5 Days =	01 NOV 2016	-778	WED	148
06NOV16	-6 Days =	31 OCT 2016	-790	TUE	-204
06NOV16	-7 Days =	30 OCT 2016	-448	MON	3358
06NOV16	-8 Days =	29 OCT 2016	-583	SUN	-883
06NOV16	-9 Days =	28 OCT 2016	-240	SAT	-1496
06NOV16	-10 Days =	27 OCT 2016	52	FRI	-534
06NOV16	-11 Days =	26 OCT 2016	98	THU	-2736
06NOV16	-12 Days =	25 OCT 2016	334	WED	-1318
06NOV16	-13 Days =	24 OCT 2016	420	TUE	-3285

S65E

Average Flow over previous 14 days					Avg-Daily Flow
06NOV16	Today=	06 NOV 2016	1229	MON	1029
06NOV16	-1 Day =	05 NOV 2016	1299	SUN	1028
06NOV16	-2 Days =	04 NOV 2016	1389	SAT	1025
06NOV16	-3 Days =	03 NOV 2016	1482	FRI	1024
06NOV16	-4 Days =	02 NOV 2016	1584	THU	1020
06NOV16	-5 Days =	01 NOV 2016	1695	WED	1068
06NOV16	-6 Days =	31 OCT 2016	1813	TUE	1083
06NOV16	-7 Days =	30 OCT 2016	1921	MON	1126
06NOV16	-8 Days =	29 OCT 2016	2062	SUN	1191
06NOV16	-9 Days =	28 OCT 2016	2203	SAT	1157
06NOV16	-10 Days =	27 OCT 2016	2369	FRI	1417
06NOV16	-11 Days =	26 OCT 2016	2541	THU	1646
06NOV16	-12 Days =	25 OCT 2016	2722	WED	1559
06NOV16	-13 Days =	24 OCT 2016	2915	TUE	1831

Lake Okeechobee Outlets Last 14 Days

DATE	S-77	Below S-77	S-78	S-79
	Discharge	Discharge	Discharge	Discharge
	(ALL DAY)	(ALL-DAY)	(ALL DAY)	(ALL DAY)
	(AC-FT)	(AC-FT)	(AC-FT)	(AC-FT)
06 NOV 2016	3247	3984	2701	3471
05 NOV 2016	3722	4452	2923	4044
04 NOV 2016	4757	5400	3812	4212
03 NOV 2016	4463	5154	3819	4676
02 NOV 2016	4457	5458	4054	5115
01 NOV 2016	5039	6415	4557	5632
31 OCT 2016	5132	6466	4529	5990
30 OCT 2016	5315	6903	4500	6231
29 OCT 2016	5236	6803	4455	5838
28 OCT 2016	5105	6735	4557	5382
27 OCT 2016	5454	7150	4593	6112
26 OCT 2016	5553	7057	4481	6330
25 OCT 2016	5414	6896	4419	5372

DATE	S-310 Discharge (ALL DAY) (AC-FT)	S-351 Discharge (ALL DAY) (AC-FT)	S-352 Discharge (ALL DAY) (AC-FT)	S-354 Discharge (ALL DAY) (AC-FT)	L8 Canal Pt Discharge (ALL DAY) (AC-FT)
24 OCT 2016	5059	6307	4488	5495	
06 NOV 2016	127	1015	230	535	470
05 NOV 2016	105	1323	52	599	450
04 NOV 2016	77	1436	440	488	454
03 NOV 2016	131	1352	773	997	449
02 NOV 2016	78	1418	371	1134	455
01 NOV 2016	51	1099	763	1138	449
31 OCT 2016	9	1126	1697	992	448
30 OCT 2016	170	1067	1892	486	399
29 OCT 2016	28	1531	1945	401	130
28 OCT 2016	66	1231	1896	976	299
27 OCT 2016	26	1305	1866	591	418
26 OCT 2016	21	1194	1910	355	426
25 OCT 2016	93	984	1281	274	452
24 OCT 2016	91	880	718	28	291

DATE	S-308 Discharge (ALL DAY) (AC-FT)	Below S-308 Discharge (ALL-DAY) (AC-FT)	S-80 Discharge (ALL-DAY) (AC-FT)
06 NOV 2016	4	130	28
05 NOV 2016	8	54	54
04 NOV 2016	938	592	503
03 NOV 2016	3661	2778	1974
02 NOV 2016	4201	3343	3148
01 NOV 2016	4256	3326	2176
31 OCT 2016	2096	1764	1900
30 OCT 2016	10	212	49
29 OCT 2016	521	336	468
28 OCT 2016	3546	3094	1825
27 OCT 2016	5103	4807	2903
26 OCT 2016	5431	5128	3456
25 OCT 2016	5052	4696	2895
24 OCT 2016	2848	2458	1690

*** NOTE: Discharge (ALL DAY) is computed using Spillway, Sector Gate and Lockages Discharges from 0015 hrs to 2400 hrs.

(I) - Flows preceded by "I" signify an instantaneous flow computed from the single value reported for the day

* On 11 May 1999, Lake Okeechobee Elevation was switched from Instantaneous 2400 value to an average-daily lake average. On 14 Mar 2001, due to the isolation of various gages within the standard 10 stations, the average of the interior 4 station gages was used as the Lake Okeechobee Elevation. On 05 November 2010, Lake Okeechobee Elevation was switched to a 9 gage

mix of interior and edge gages to obtain a more reliable representation of the lake level.

On 09 May 2011, Lake Okeechobee Elevation was switched to a 8 gage mix of interior and edge gages to obtain a more reliable representation of the lake level due to isolation of S135 from low lake levels.

Today Lake Okeechobee elevation is determined from the 4 Int & 4 Edge stations

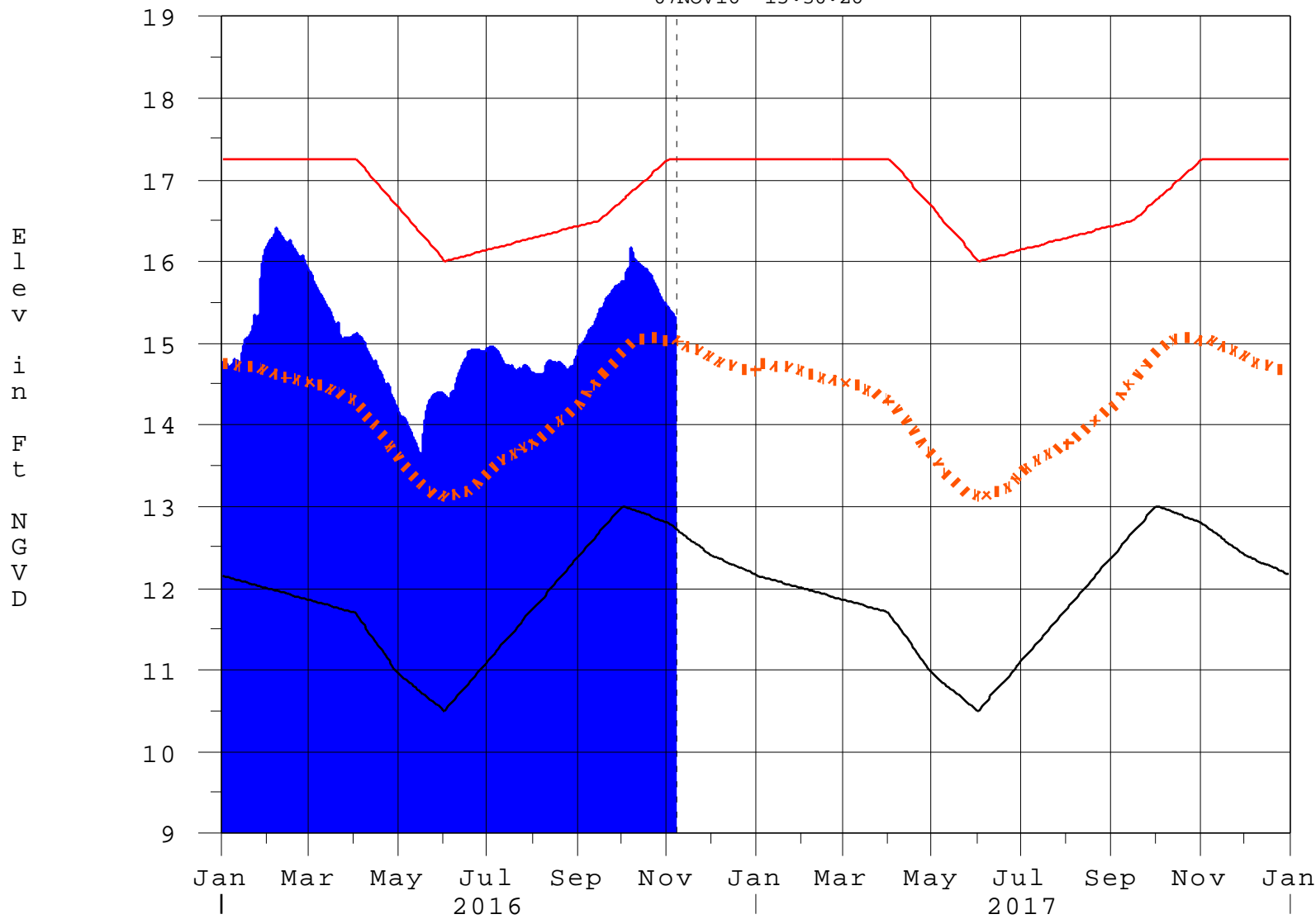
++ For more information see the Jacksonville District Navigation website at <http://www.saj.usace.army.mil/>

\$ For information regarding Lake Okeechobee Service Area water restrictions please refer to www.sfwmd.gov

Report Generated 07NOV2016 @ 15:39 ** Preliminary Data - Subject to Revision
**

Lake Okeechobee

07NOV16 15:30:26



- High Lake Management
- Okeechobee Avg Elev
- Average Elev [1965-2007]
- Water Shortage Management

Classification Tables

Supplemental Tables used in conjunction with the LORS2008 Release

Guidance Flow Charts

- [Class Limits for Tributary Hydrologic Conditions](#)

Table K-2 in the Lake Okeechobee Water Control Plan

- [6-15 Day Precipitation Outlook Categories](#)

Table ?? in the Lake Okeechobee Water Control Plan

- [Classification of Lake Okeechobee Net Inflow for Seasonal Outlook](#)

Table K-3 in the Lake Okeechobee Water Control Plan

- [Classification of Lake Okeechobee Net Inflow for Multi-Seasonal Outlook](#)

Table K-4 in the Lake Okeechobee Water Control Plan

[Back to Lake Okeechobee Operations Main Page](#)

[Back to U.S. Army Corps of Engineers Lake Okeechobee Operations Homepage](#)

Tributary Hydrologic Classification*	Palmer Index Class Limits	2-wk Mean L.O. Net Inflow Class Limits
Very Wet	3.0 or greater	Greater \geq 6000 cfs
Wet	1.5 to 2.99	2500 - 5999 cfs
Near Normal	-1.49 to 1.49	500 - 2499 cfs
Dry	-2.99 to -1.5	-5000 – 500 cfs
Very Dry	-3.0 or less	Less than -5000 cfs

* use the wettest of the two indicators

Classification of Lake Okeechobee Net Inflow Seasonal Outlook*

Lake Net Inflow Prediction [million acre-feet]	Equivalent Depth** [feet]	Lake Okeechobee Net Inflow Seasonal Outlook
> 0.93	> 2.0	Very Wet
0.71 to 0.93	1.51 to 2.0	Wet
0.35 to 0.70	0.75 to 1.5	Normal
< 0.35	< 0.75	Dry

****Volume-depth conversion based on average lake surface area of 467,000 acres**

Classification of Lake Okeechobee Net Inflow Multi-Seasonal Outlook*

Lake Net Inflow Prediction [million acre-feet]	Equivalent Depth** [feet]	Lake Okeechobee Net Inflow Multi-Seasonal Outlook
> 2.0	> 4.3	Very Wet
1.18 to 2.0	2.51 to 4.3	Wet
0.5 to 1.17	1.1 to 2.5	Normal
< 0.5	< 1.1	Dry

****Volume-depth conversion based on average lake surface area of 467,000 acres**

6-15 Day Precipitation Outlook Categories*

6-15 Day Precipitation Outlook Categories	WSE Decision Tree Categories
Above Normal	Wet to Very Wet
Normal	Normal
Below Normal	Dry

* Corresponds to Table 7-6 in the Lake Okeechobee Water Control Plan

Under Construction