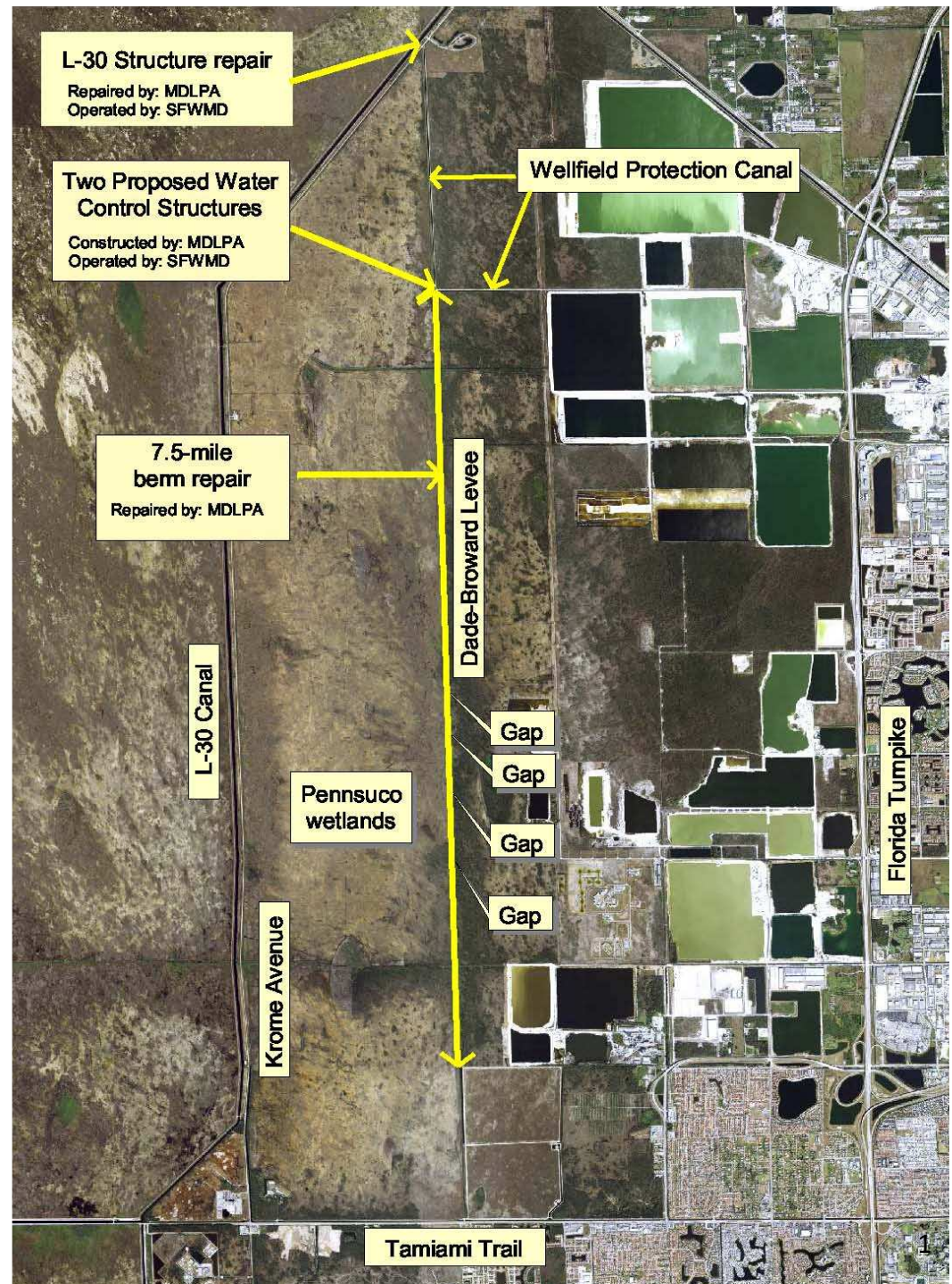


# L-30 structure repair / remote control operation

## Purpose

After repair, the SFWMD will be able to remotely operate the structure for:

1. wellfield protection during droughts
2. Pennsuco wetland hydroperiod enhancement when there is excess water available in the SFWMD regional canal system



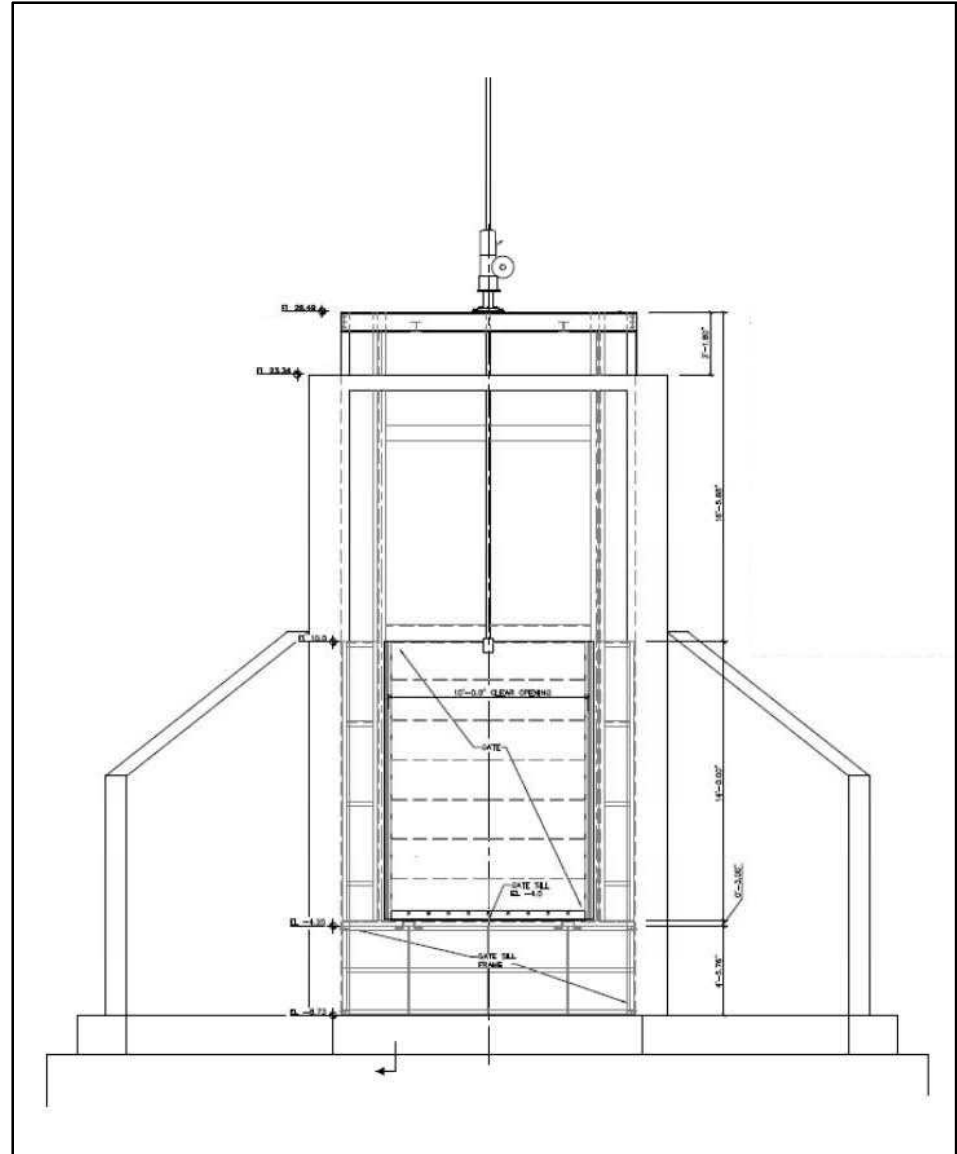






## Components

New gate, operator, power, stop logs, and remote control communication.



## DBL Phase 3 budget

L-30 structure repair	
construction	\$ 1.6
permitting/oversight	0.2
contingency	0.2
Monitoring	0.2
Long-term O&M fund	<u>1.0</u>
Total	\$ 3.2 million

Transfer from L-31N Phase 2 escrow account