

Dade-Broward Levee Seepage Project

Approach

Fix gaps in the berm, build two canal structures, and divert flows from SFWMD for Pennsuco wetlands.

Completed

Mulching / Surveying / Modeling /
Design / Permitting

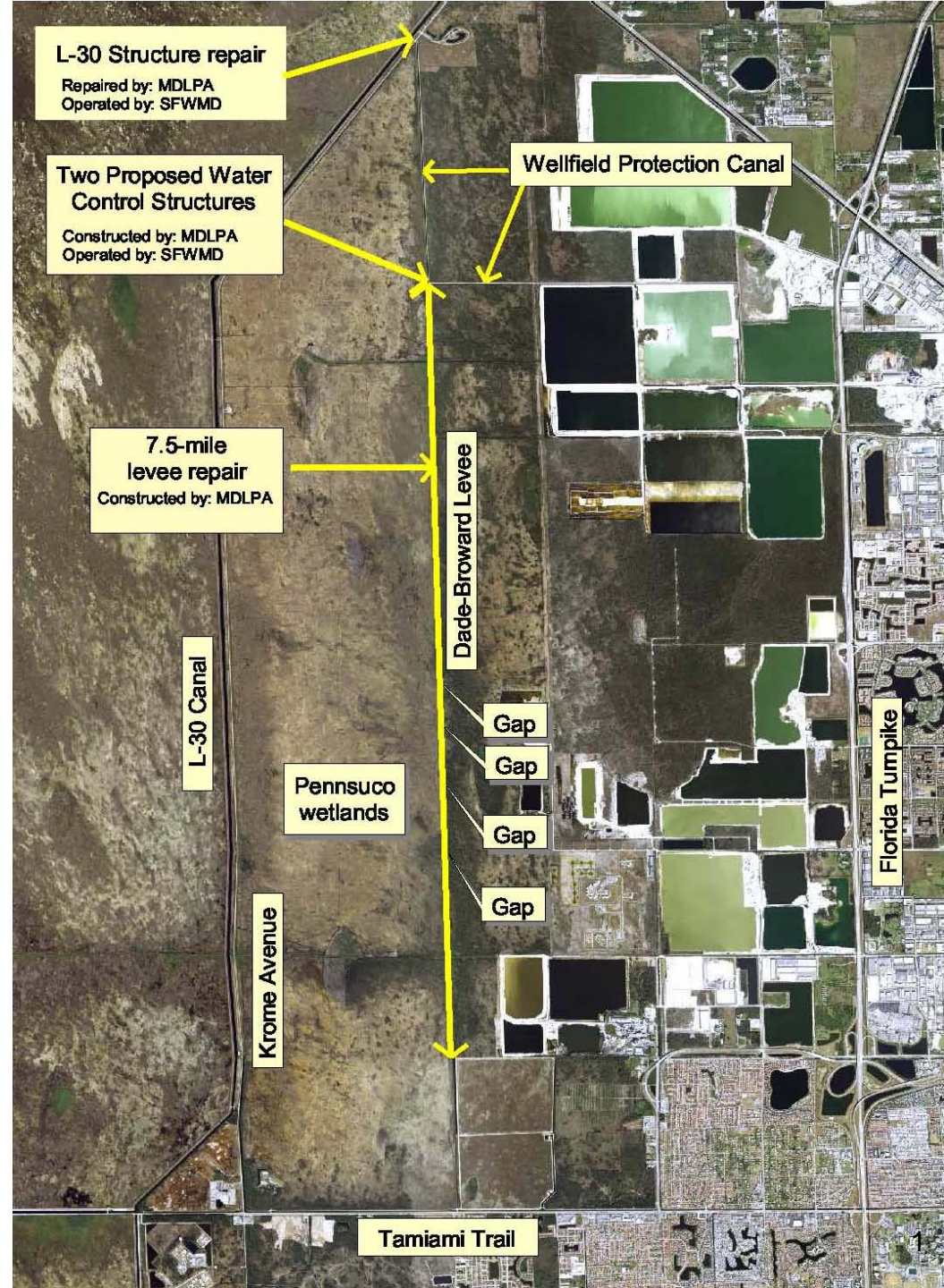
Next steps

Berm repair – May 2016

Structure construction – 2017

First steps toward authorization of
permitted Phase 2 mining.

Modeling indicates that proposed
project offsets potential seepage
effect from full Lake Belt mine-out
with 1000' setback.





Section 16 – August 2014 (looking south)



Berm repair – south end (May 2016)