

Six-Mile Cypress Slough

Lee County

- Area within planning boundary footprint ~ 2,193 acres
- District fee-simple ownership ~ 854 acres
- Other public fee-simple ownership ~ 1,198 acres
- Area under other protective restriction (conservation easement, platted preserve area, etc.) ~ 0 acres

Site Overview

The state forest was purchased under the Conservation and Recreation Lands (CARL) Program using Preservation 2000 and Save Our Rivers funds.

Core Mission Values

Six-Mile Cypress Slough is a regionally significant flowway running through a densely developed area of western Lee County. The slough is an important water-quality feature that helps buffer and clean urban stormwater runoff before it enters Estero Bay.

Other Resource Value

The slough provides significant areas of habitat for a variety of wetland species.

Management Issues

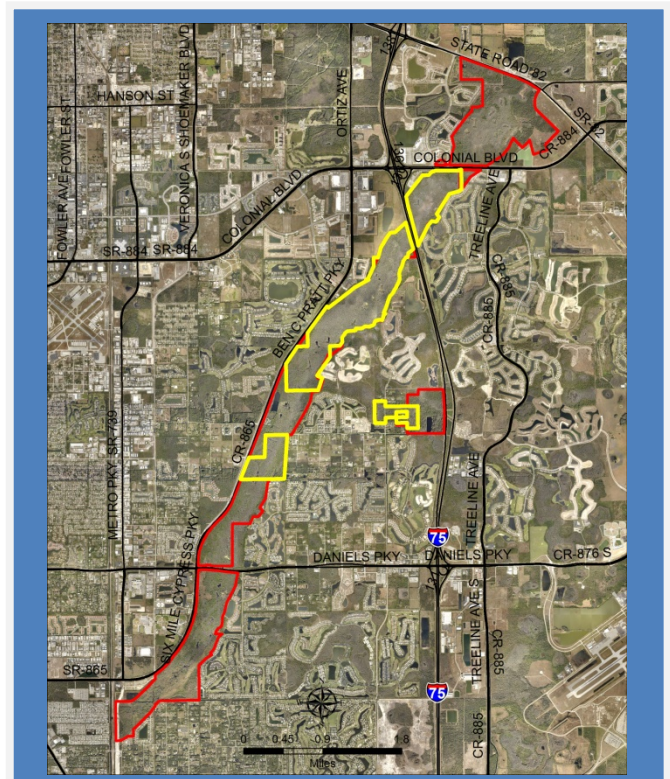
The area is managed by Lee County.

Public Use and Recreation Value

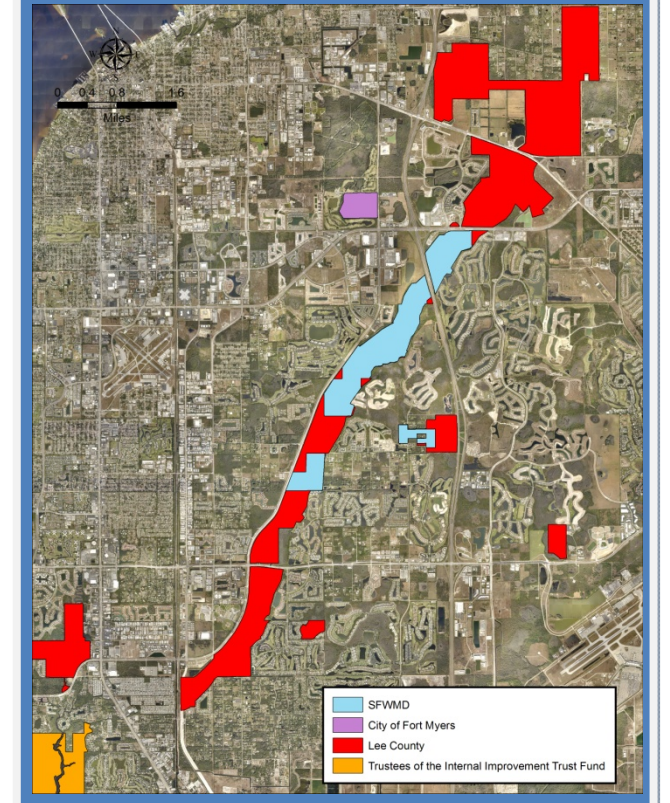
This property has the highest visitation of any District-owned land. The site contains an education center, that the District helped fund, and a boardwalk through a portion of the wetlands.

Assessment Units

None.



Six-Mile Cypress Slough, District-owned parcels are outlined in yellow. Lee County-owned parcels are outlined in red.



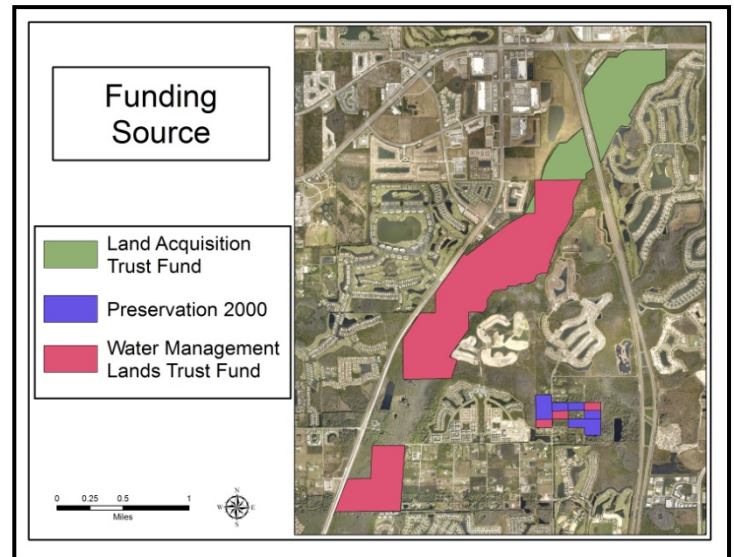
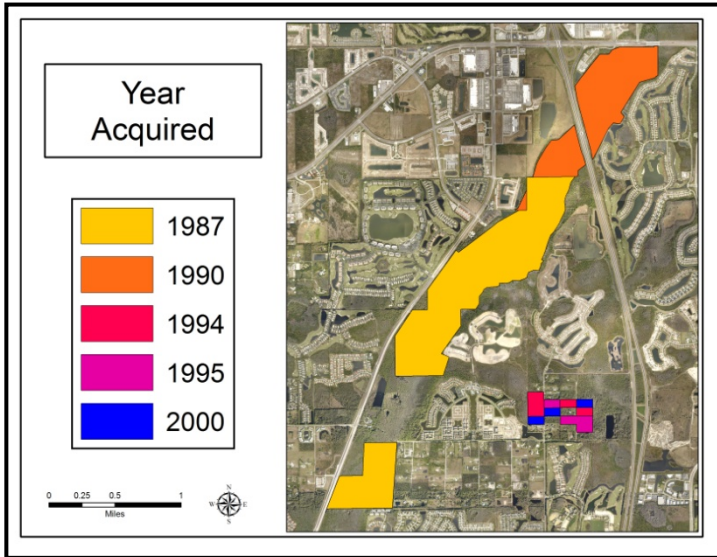
Six-Mile Cypress Slough and other Public Land.

Six-Mile Cypress Slough, Photos

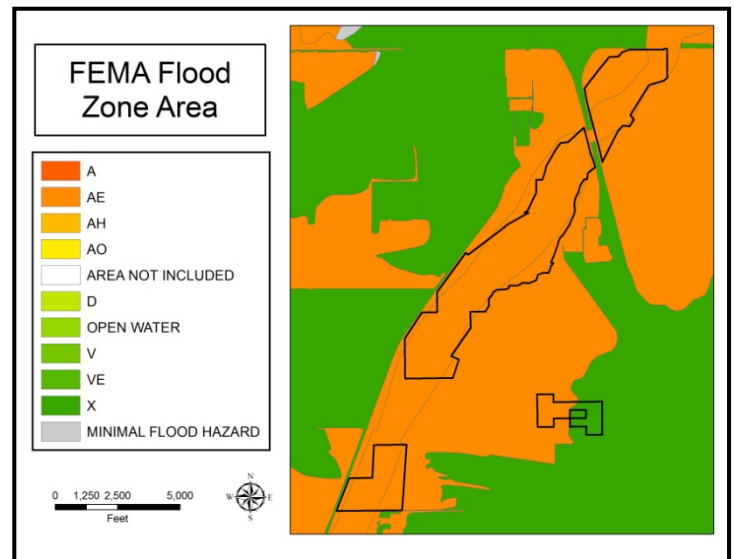
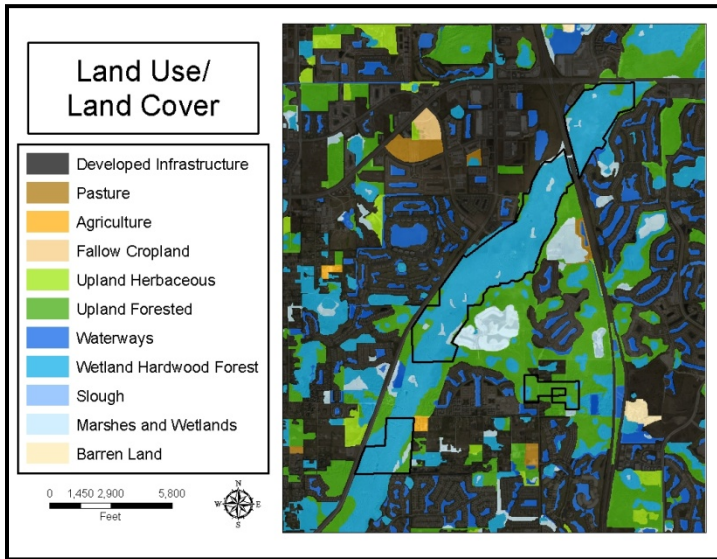


The site's popular boardwalk (top), the education center (middle), the swamp (bottom left), and the entrance to the site (bottom right)

Six-Mile Cypress Slough: Land Acquisition



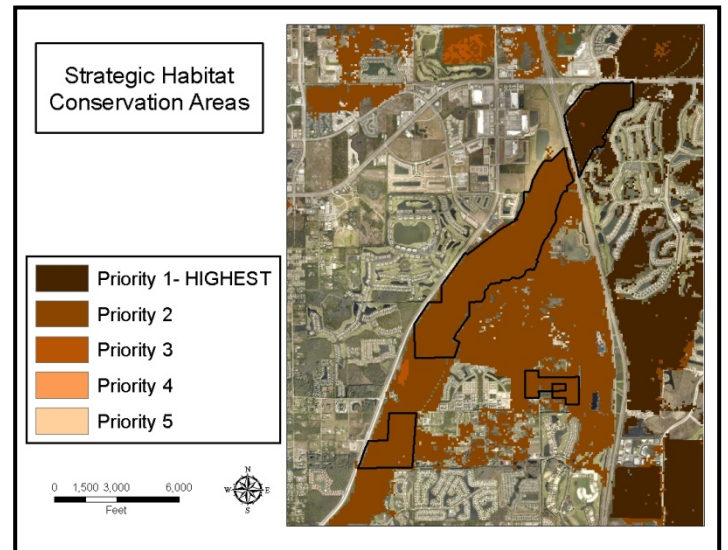
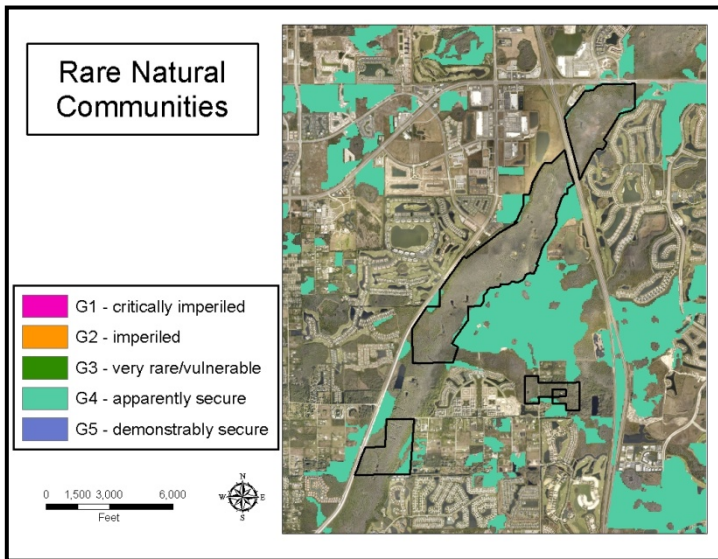
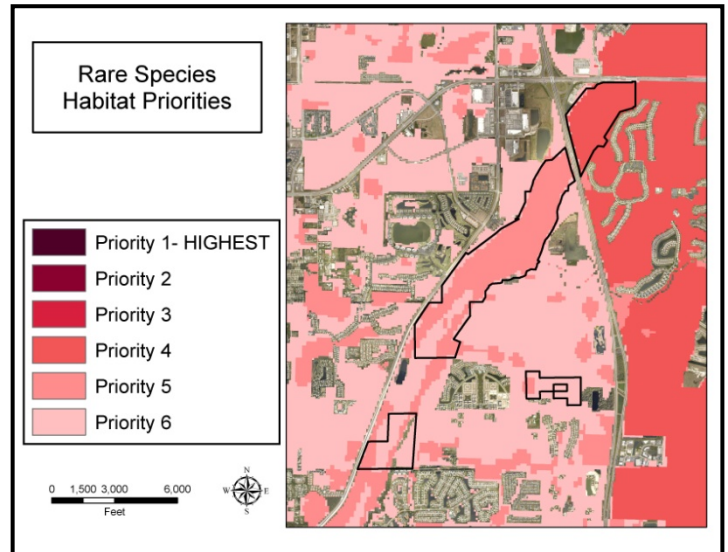
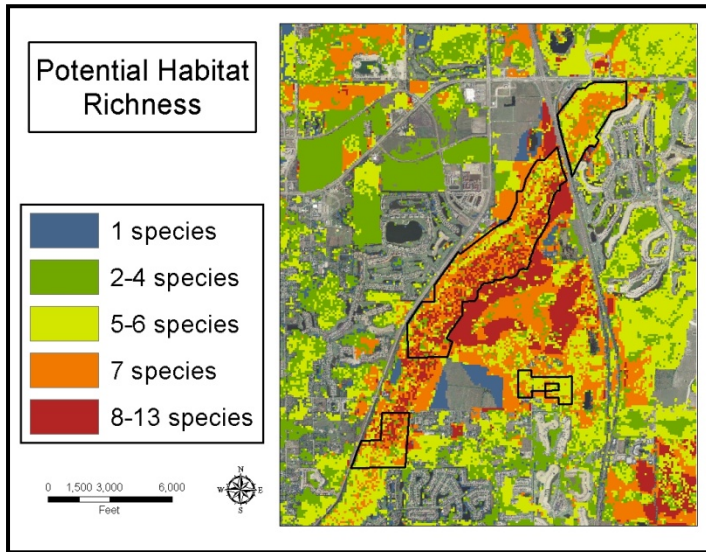
Six-Mile Cypress Slough: Land Character



IMPORTANT DISCLAIMER: All maps in this document are a conceptual or planning tool only. The South Florida Water Management District does not guarantee or make any representation regarding the information contained herein. It is not self-executing or binding, and does not affect the interests of any persons or properties, including any present or future right or use of real property.

For more information on the data layers used in the assessment, please refer to the Land Assessment Study Process and Methodology document available here: http://www.sfwmd.gov/portal/page/portal/xrepository/sfwmd_repository_pdf/land_assessment_study_process.pdf

Six-Mile Cypress Slough: Land Character (Continued)



IMPORTANT DISCLAIMER: All maps in this document are a conceptual or planning tool only. The South Florida Water Management District does not guarantee or make any representation regarding the information contained herein. It is not self-executing or binding, and does not affect the interests of any persons or properties, including any present or future right or use of real property.

For more information on the data layers used in the assessment, please refer to the Land Assessment Study Process and Methodology document available here: http://www.sfwmd.gov/portal/page/portal/xrepository/sfwmd_repository_pdf/land_assessment_study_process.pdf