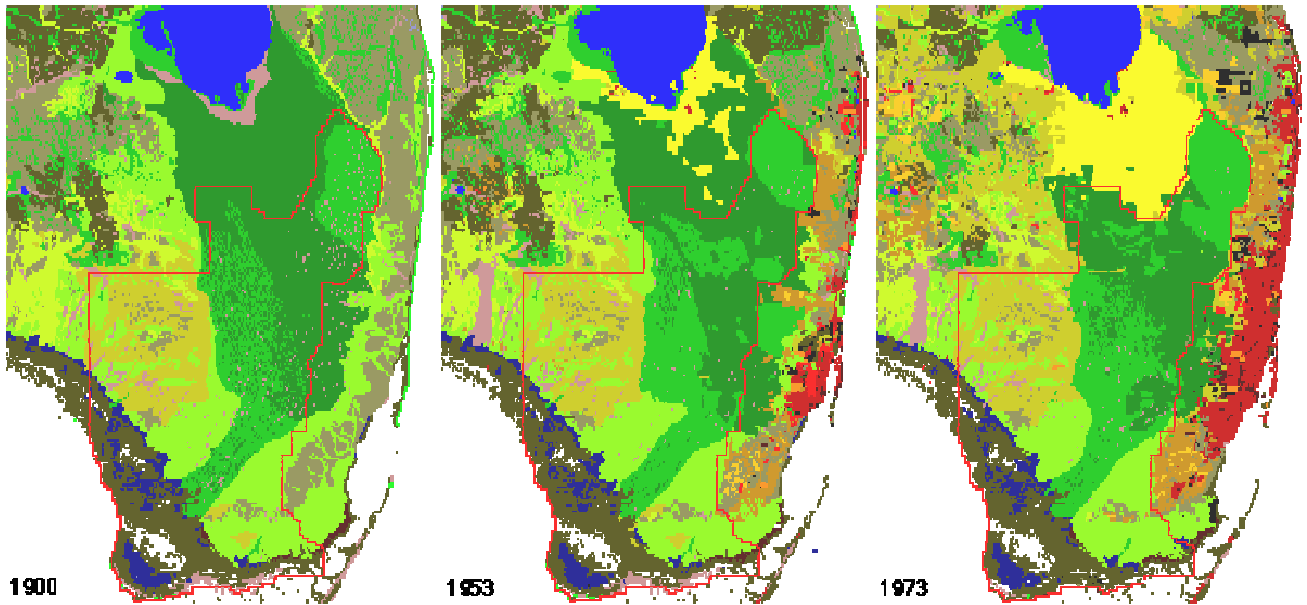


Land Use Change: 1900-1973

Approximate historical encroachment of agricultural and urban land uses in South Florida between 1900, 1953, and 1973. The red outline shows the ELM boundaries. The land use category-colors are those from the Land use & Canals 1973 map. Adapted from Costanza (1975).



Costanza, R., 1975. The spatial distribution of land use subsystems, incoming energy and energy use in south Florida from 1900 to 1973. Masters, University of Florida. pp.