



Following a Coot (*Fulica americana*) down an airboat trail.
Lake Okeechobee, February 2012



**Fisherman, Fisheating Bay
Lake Okeechobee, February 2012**



**Scientist Andy Rodusky uses rakes to sample for SAV (submersed aquatic vegetation).
Lake Okeechobee, February 2012**



The SAV Nitella (*Nitella spp.*), which is actually an alga, has a unique neon-green tubular appearance.
Lake Okeechobee, February 2012



**"Mare's tails" clouds over Fisheating Bay
Lake Okeechobee, February 2012**



An American Coot scampers for cover.
Lake Okeechobee, February 2012



More Coots spotted during a wading bird survey flight.
STA 1E, February 2012



Wading birds (mostly White Ibis (*Eudocimus albus*)).
Lake Okeechobee, February 2012



A Great Blue Heron (*Ardea herodias*) nest in the marsh.
Lake Okeechobee, February 2012



White Pelicans (*Pelicanus erythrorhynchos*)
Lake Okeechobee, February 2012



American Alligators, (*Alligator mississippiensis*)
STA 1E, February 2012





**Intern Bill Bosc and Scientist Karen Donnelly set up a herpetofauna (reptiles and amphibians) trap in the Indian Prairie marsh.
Lake Okeechobee, February 2012**



Bill getting lots of hands-on experience.

Some of the creatures caught in the Indian Prairie herpetofauna traps.



Exotic Apple Snail (*Pomacea insularum*)



Scientist Brent Anderson with a Greater Siren
(*Siren lacertina*)



Black Crappie (*Pomoxis nigromaculatus*)



Blue Tilapia (*Poreochromis aureus*)



**Brent Anderson and Karen Donnelly
weigh a Greater Siren.
Indian Prairie, Lake Okeechobee February 2012**

**Contractor Jessica Wilson
sets a herpetofauna trap
near Pearce Canal.
Lake Okeechobee
February 2012**



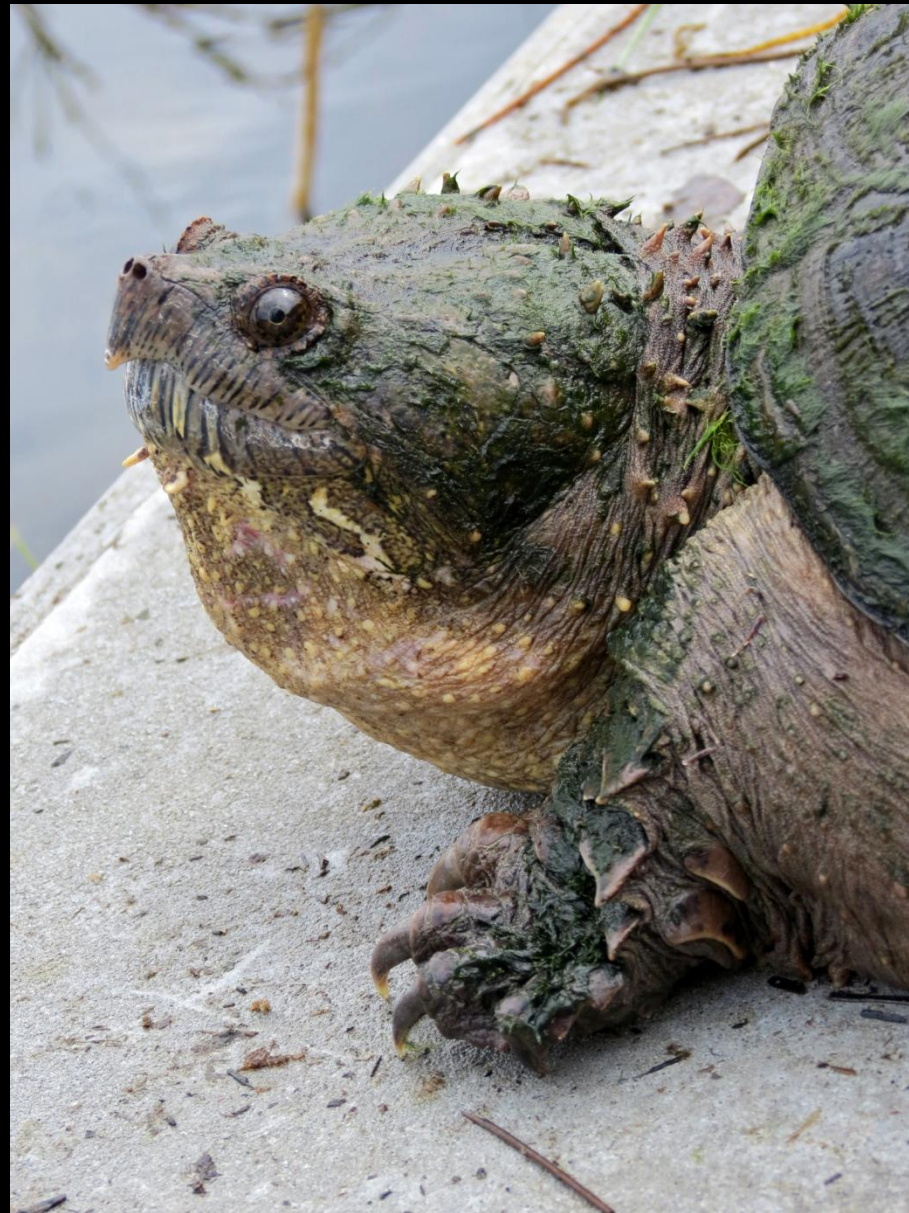
Some of the creatures caught in the Pearce Canal herpetofauna traps.



Leopard Frog tadpole (*Lithobates (Rana) sphenocephalus*)



Sailfin Molly (*Mollienisia latipinna*)



Florida Snapping Turtle (*Chelydra serpentina osceola*)





Pig Frog (*Lithobates (Rana) grylio*), caught in the herpetofauna traps near Dyess Ditch.
Lake Okeechobee, February 2012



Andy Rodusky and Bill Bosc prepare to install fencing for native Apple Snail (*Pomacea paludosa*) enclosures.
Lemkin Creek, February 2012



Scientists Rachael Pierce and Amy Peters work on more fencing.
Lemkin Creek, February 2012



An aerial view – native Apple Snail stocking density experiment enclosures (foreground) and breeding enclosures and boardwalks (background).
Lemkin Creek, February 2012



Bald Eagle (*Haliaeetus leucocephalus*). Lemkin Creek, February 2012



Sandhill Cranes (*Grus canadensis*). Lemkin Creek, February 2012



**A sugarcane burn south of Lake Okeechobee.
Controlled burns are used to remove leaves before harvesting.
February 2012**





Harvesting sugarcane south of Lake Okeechobee.
February 2012