

*Lake
Kissimmee*

Kissimmee Regional Issues Overview

Alan Shirkey, SFWMD
Kissimmee Regional Issues
Coordinator

Public Meeting
December 14, 2010

Kissimmee Regional Issues Coordination

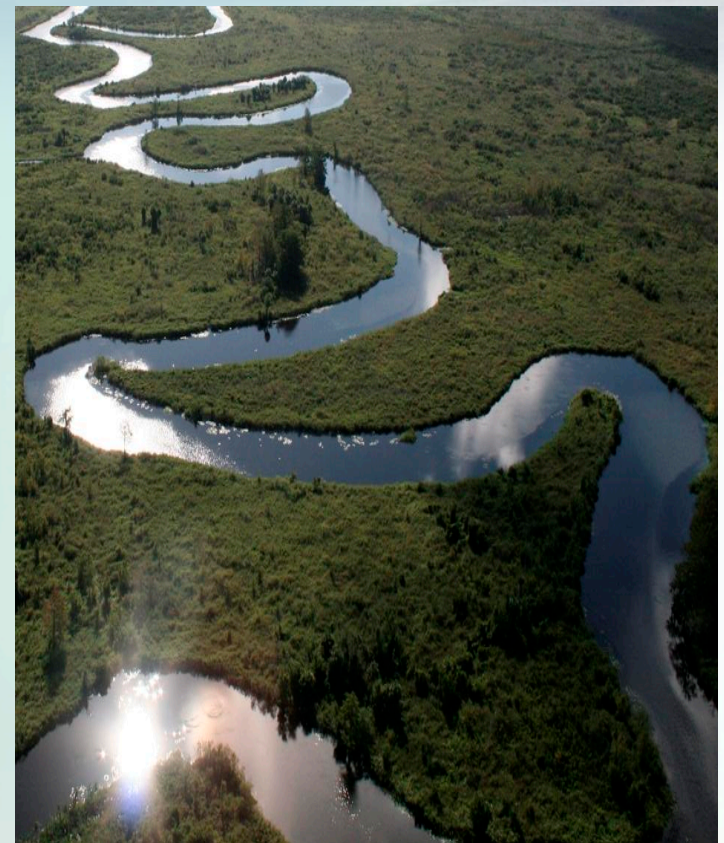


Purpose: To ensure coordination and oversight of the multiple, ongoing water-related projects and initiatives in the Kissimmee region, which includes the Kissimmee River and floodplain (Lower Basin) and the Chain of Lakes (Upper Basin).

Kissimmee Regional Issues Coordination

Initiatives included under the KRIC umbrella:

- Coordination with USACE on Kissimmee River Restoration Project Components
 - Land Acquisition
 - Environmental Monitoring & Assessment
- Water Reservation
- Central Florida Coordination Area
- Kissimmee Basin Modeling and Operations Study
- Lake Okeechobee Protection Plan
- Select Local Restoration/Drainage Improvement Projects



Kissimmee Regional Issues Coordination



Kissimmee River Restoration:

- Purpose – Ecosystem Restoration
- Project success evaluated using ecosystem-level performance measures
- 13.5 miles of C-38 backfilled
- 24 miles of river channel with restored flow
- 7,700 acres of wetlands gained
- Dissolved oxygen increases, sandbar formation, bass and sunfish population increases, increase in use by waterfowl and wading birds

Kissimmee Regional Issues Coordination



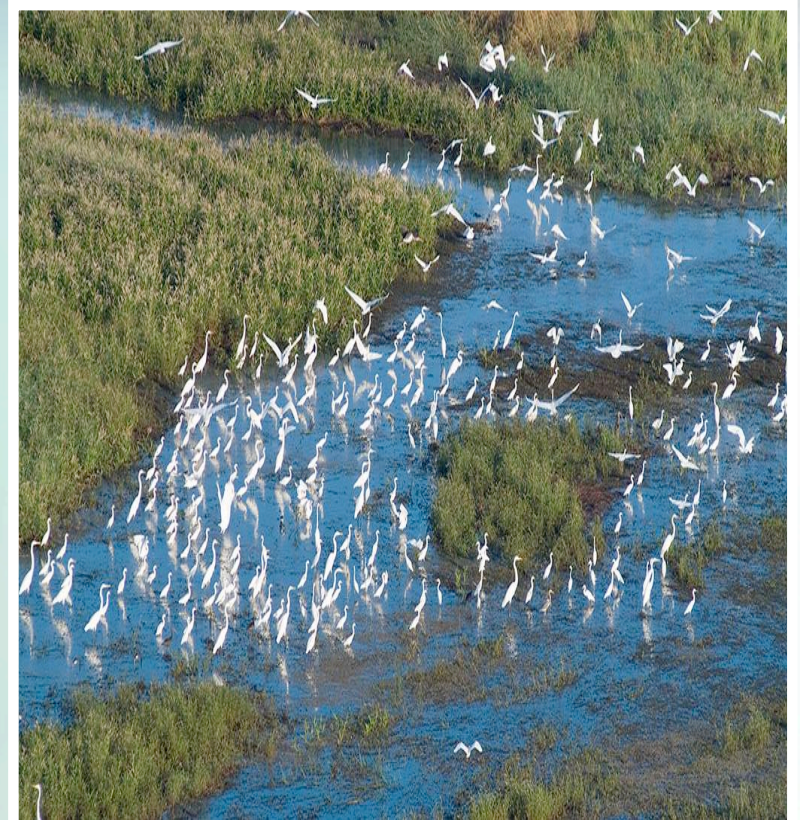
Kissimmee River Restoration Next Steps:

- Complete remaining backfill reaches, flood mitigation features & oxbow dredging
- Complete C-37 Widening
- Complete remaining control structure modifications/additions (U-shaped weir, S-65E)
- Implement Headwaters Revitalization in Upper Basin
- Project completion targeted for December 2014

Kissimmee Regional Issues Coordination

Water Reservation:

- A water reservation is a legal mechanism to set aside water from consumptive uses for the protection of fish and wildlife or for public health and safety.
 - Authority: F.S. 373.223(4)
- To assure water will be available for the protection of fish and wildlife within the Chain of Lakes and restored Kissimmee River and floodplain, the District's Governing Board initiated the development of rulemaking to reserve water for that purpose.
- Based on scientific evaluation of environmental needs



Kissimmee Regional Issues Coordination

Water Reservation Next Steps:

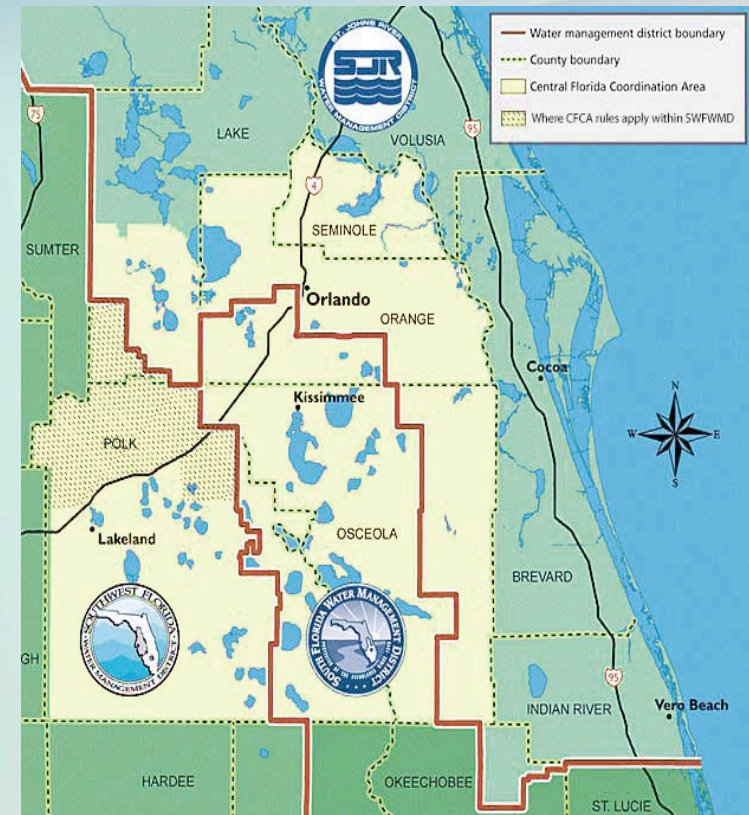
- Conduct stakeholder workshops on January 20
- Present to WRAC and Governing Board in January and February
- Conduct peer review of East Lake Tohopekaliga withdrawal scenarios technical report – Spring 2011
- Initiate series of public workshops to draft rule in Spring and Summer 2011



Kissimmee Regional Issues Coordination

Central Florida Coordination Area:

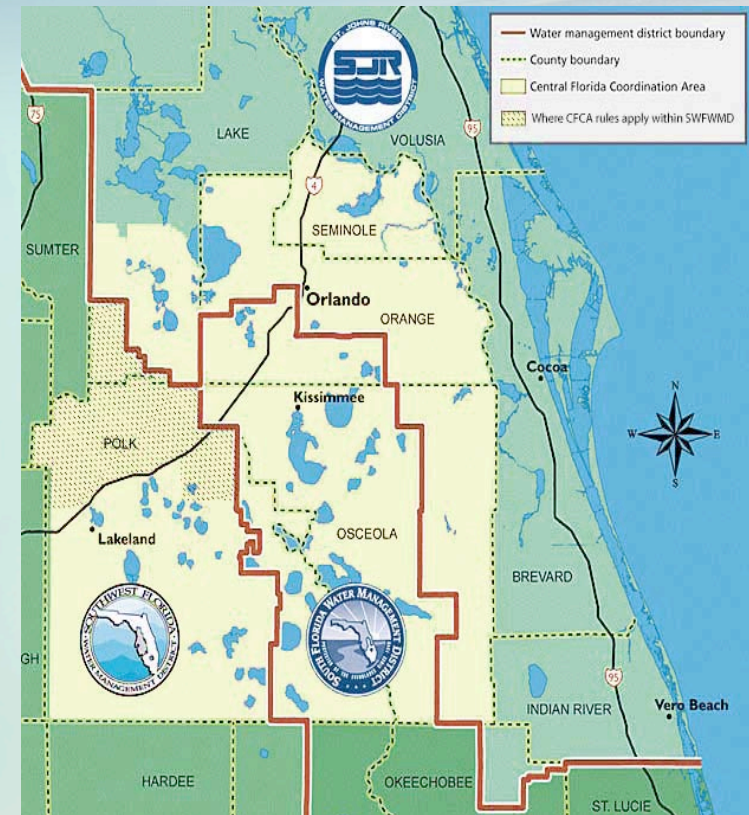
- A collaboration of the South Florida Water Management District, St. Johns River Water Management District and Southwest Florida Water Management District to address short- and long-term development of water supplies in the Central Florida region
- Includes extensive modeling of the Floridan Aquifer
- Includes assessment of environmental impacts from existing withdrawals



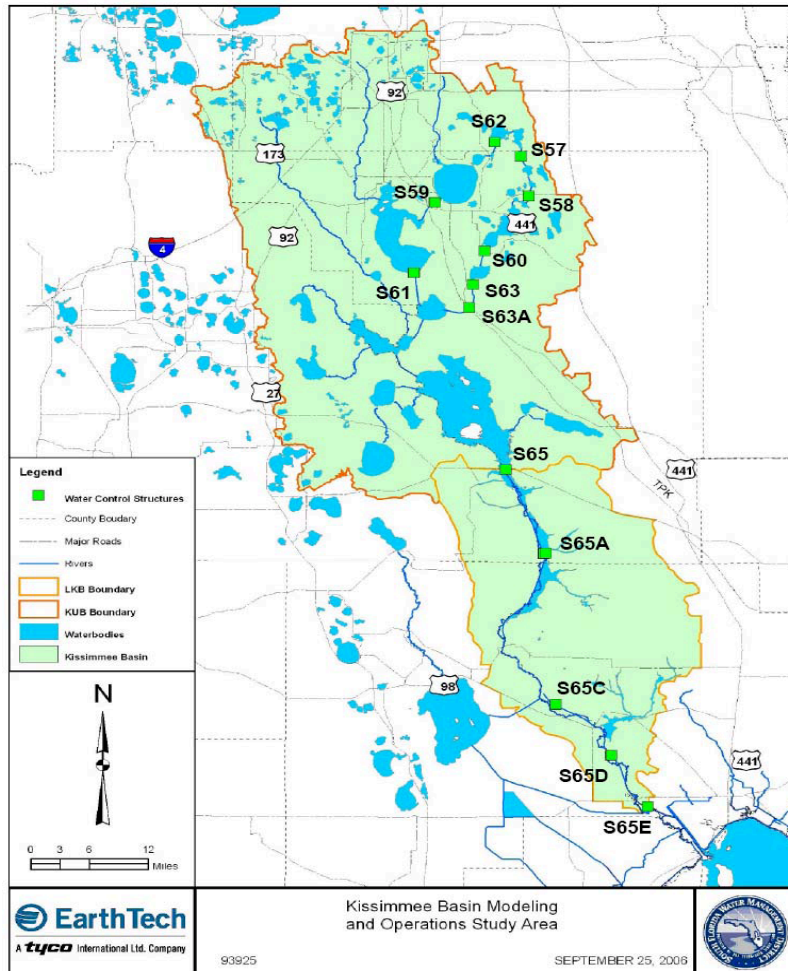
Kissimmee Regional Issues Coordination

Central Florida Coordination Area Next Steps:

- Complete Estimation of Groundwater Availability including Summary Report by January 2011, then begin the Solution Development Phase
- Continue workshops – next technical workshop is tentatively set for January 2011, next full stakeholder workshop for March 2011
- Rule development expected to be completed by December 2012



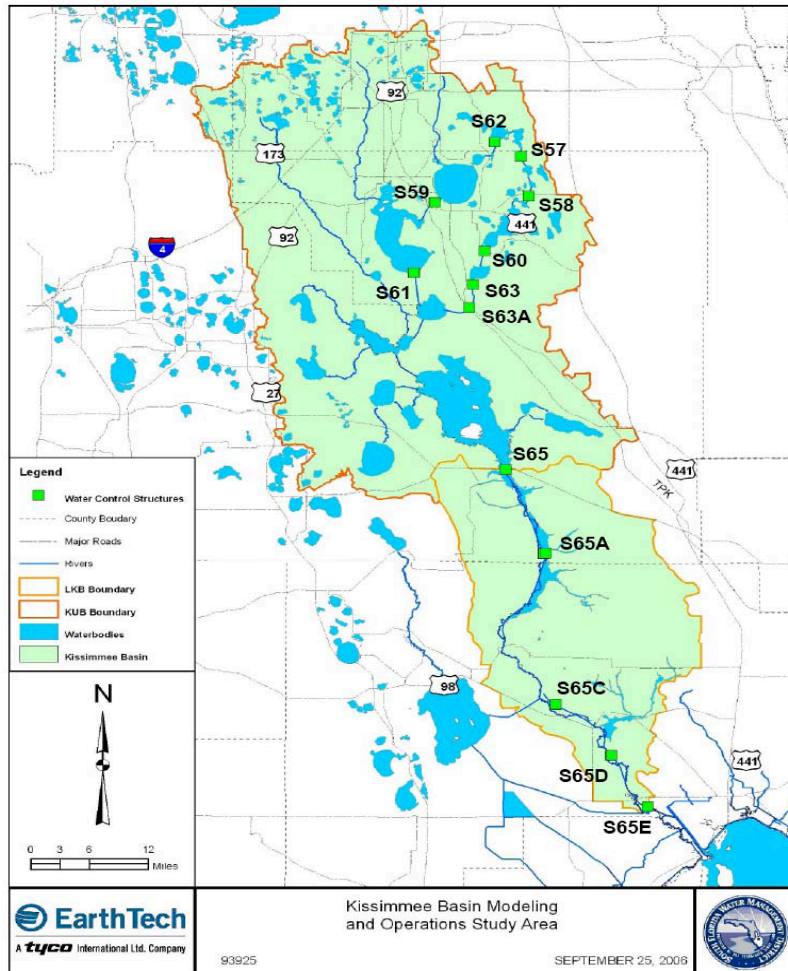
Kissimmee Regional Issues Coordination



Kissimmee Basin Modeling and Operations Study:

- Purpose – Identify new operating criteria for water control structures
- Goal: Meet requirements for river restoration; enhance and/or sustain lake ecosystem health; balance C&SF project objectives; avoid impacts to Lake Okeechobee
- Evaluate through hydrologic performance measures
- Evaluation Performance Indicators
 - Flood Control
 - Lake Okeechobee
 - Water Supply
 - Navigation & Recreation
 - Aquatic Plant Management

Kissimmee Regional Issues Coordination



Kissimmee Basin Modeling and Operations Study Next Steps:

- Dec 2010 – May 2011: Calibrate Flood Event Model, Develop Comparable Base Condition
- June 2011: Initiate USACE's Joint Probability Analyses for Base and Top 4 Alternatives
- Dec 2011: Complete Alternative Plan Refinement, Joint Probability Flood Analysis & Loss of Benefits Analysis
- May 2012: Complete Alternative Plan Evaluation
- July/Aug 2012: Alternative Plan Selection
- Sept 2012: Complete Interim Conditions Modeling and Operational Guidance Memorandum

Kissimmee Regional Issues Coordination

Lake Okeechobee Protection Plan

- The Plan is reviewed and updated every three years to evaluate if further phosphorus load reductions are necessary to achieve compliance with the lake's Total Maximum Daily Load by 2015.
- The 2008 version is currently being updated for issuance of the 2011 version of the Plan.
- Stormwater from the Kissimmee Upper and Lower Basins has a major effect on the water quality of Lake Okeechobee.



Kissimmee Regional Issues Coordination

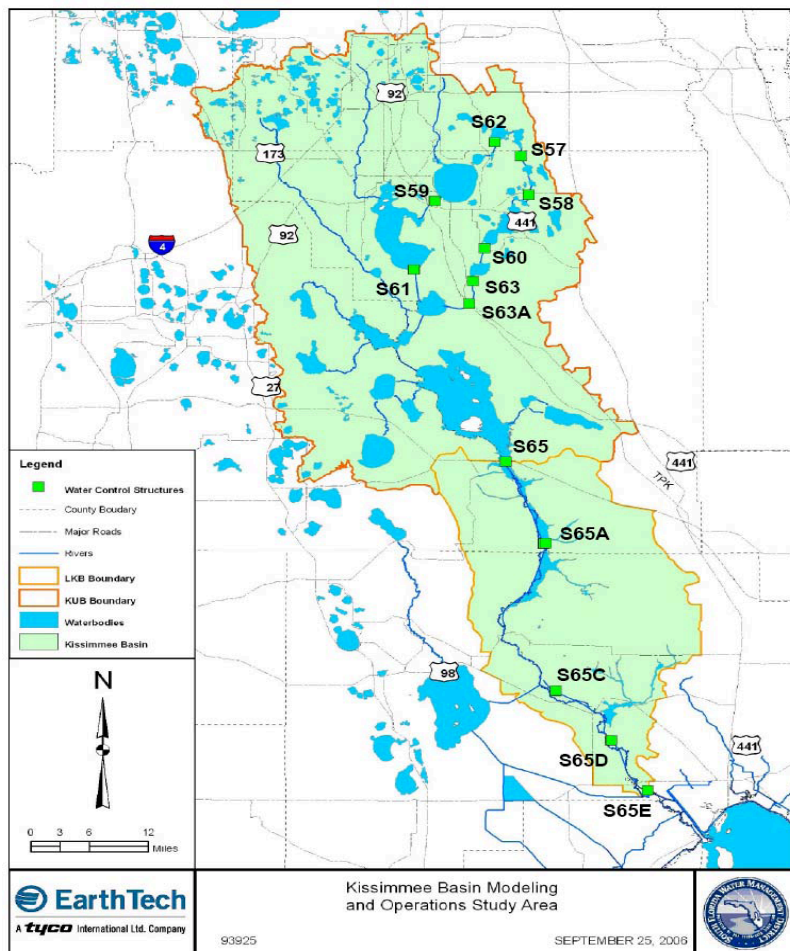
Lake Okeechobee Protection Plan

Next Steps:

- The Draft Plan was submitted for public comment. Comment period ended December 9, 2010.
- Draft Plan was presented at the District's December Governing Board Meeting.
- Revisions from the comment period will be presented to the Lake Okeechobee WRAC in January 2011, and the overall WRAC in February 2011.
- Delivery of the final document to the Legislature is proposed for March 2011.



Kissimmee Regional Issues Coordination



Control Structure & Recreation Improvements

- S-60 Gate Operator Replacement
- Navigation Lock Refurbishments at S-61, S-65, S-65A and S-65D
- Lake Kissimmee Boat Ramp
- Concrete Repairs at S-59, S-62, S-63, S-63A
- G-103 Replacement



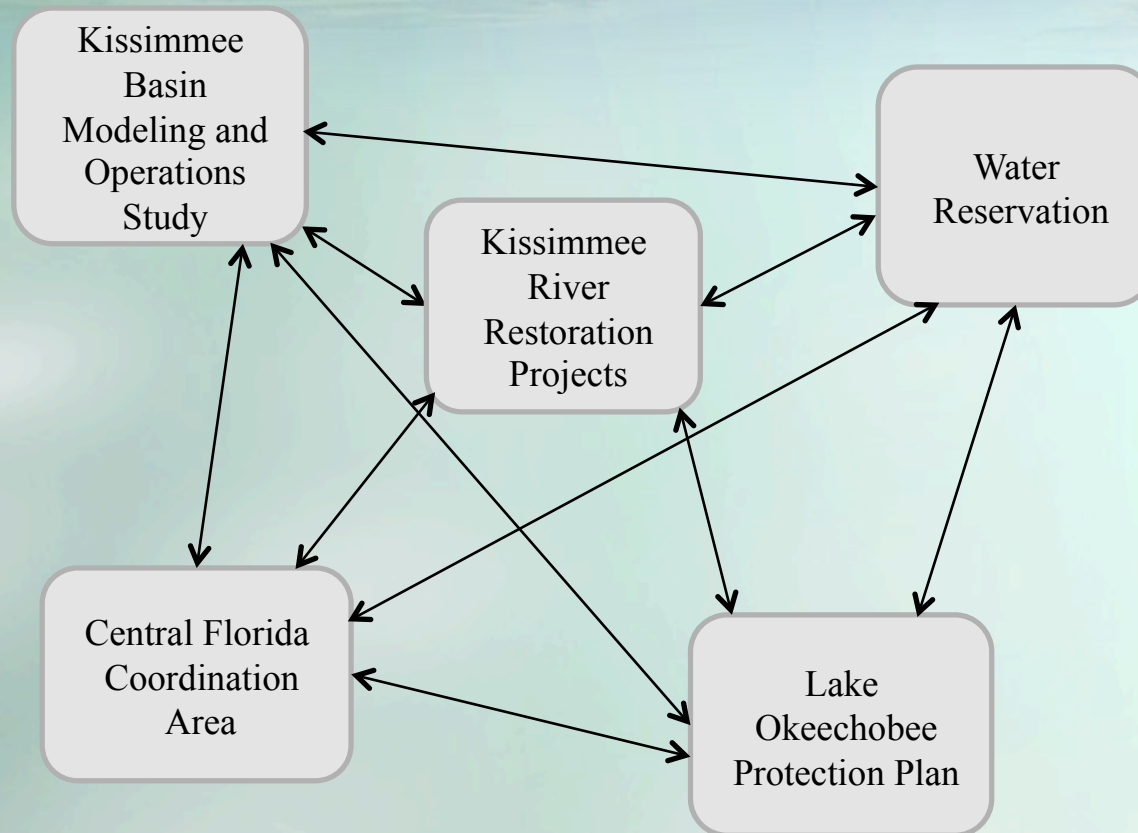
Kissimmee Regional Issues Coordination



Related Restoration Projects

- Three Lakes Wildlife Management Area
 - Joint project between District and FWC
 - Restore more natural hydrology and wetland function to the Wildlife Management Area – replace G113 structure
- Rolling Meadows
 - 5,788 acre property jointly purchased in 2002 by FDEP and the District as part of the Kissimmee Headwaters Revitalization Project
 - Restore damaged wetland area by increasing hydroperiod – degrade levee and install control structures

Kissimmee Regional Issues Coordination



Kissimmee Regional Issues Coordination



<http://www.sfwmd.gov>

- Topics
 - Service Centers
 - Orlando
 - KRIC

Contains upcoming meetings/agendas by initiative and weblinks to individual initiatives.