

March 2010



## just the FACTs

This fact sheet is provided as a reference to encourage a greater understanding of the various issues related to managing water in south Florida.

## Istokpoga Canal Boat Ramp Area

*The Istokpoga Canal Boat Ramp Area is the newest of South Florida Water Management District maintained sites offering recreational access to the Kissimmee River. Boaters, fishing enthusiasts, horseback riders, hikers, picnic goers, bird-watchers and photographers can each find something appealing about the 18-acre boat ramp area, which also offers trail access to Hickory Hammock Wildlife Management Area.*

*The Istokpoga Canal Boat Ramp Area was built in partnership with the U.S. Army Corps of Engineers and is an enhanced facility with amenities. It replaces a boat ramp off nearby Bluff Hammock Road that was adjacent to the S-65B navigation lock. The lock and boat ramp were removed as part of ongoing Kissimmee River Restoration, which ultimately will return water flow to 43 miles of the river's historic channel and restore about 40 square miles of river/floodplain ecosystem.*

*The District owns 621,000 acres of land that is open to the public. Recreational use of District public lands is allowed when uses are compatible and consistent with agency environmental restoration, water supply, water quality and flood control missions.*

### **Lake Istokpoga Boat Ramp Area Features**

- Dual lane powerboat ramp divided by a finger pier
- Single lane dry launch airboat ramp
- Covered shelters with tables and grills, 2
- Open picnic areas with tables and grills, 16
- Paved, lighted parking areas: 30 spaces for vehicles with trailers and 25 spaces for vehicles.
- Restrooms
- Horseback riding and hiking trailhead for Hickory Hammock Wildlife Management Area
- Access to Florida National Scenic Trail

### **Hours of operation and directions**

The Istokpoga Canal Boat Ramp Area is open 24 hours a day, seven days a week.

- **From the City of Okeechobee:** Travel north on U.S. Hwy 98 for approximately 25 miles to the Istokpoga Canal Bridge. At the Istokpoga Canal Boat Ramp Area sign, turn right into the facility.
- **From Sebring at U.S. Hwy 27:** Travel south on U.S. Hwy 98 for approximately 17 miles to the Istokpoga Canal Bridge. At the Istokpoga Canal Boat Ramp Area sign, turn left into the facility.

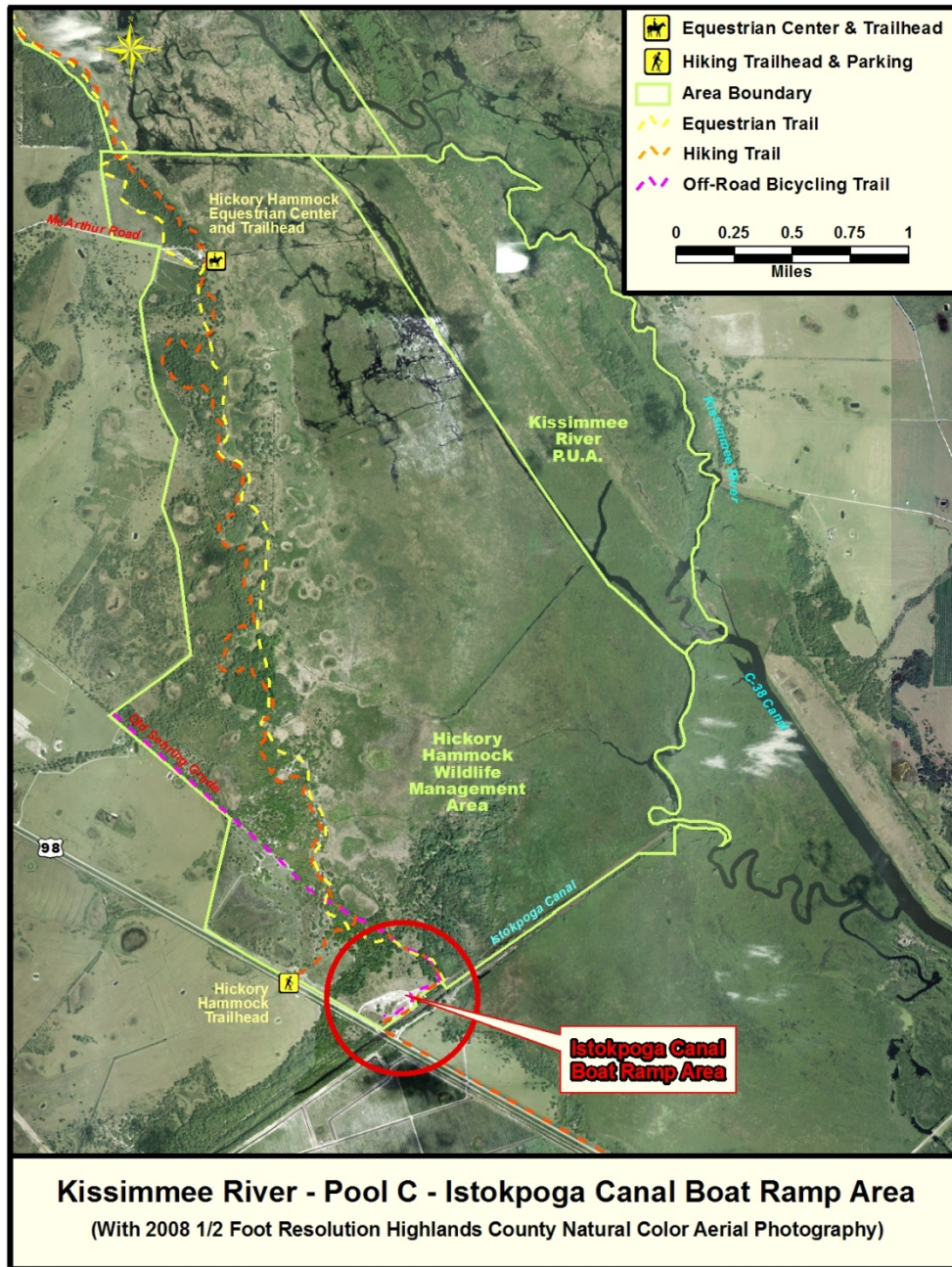


[sfwmd.gov](http://sfwmd.gov)  
South Florida Water Management District  
3301 Gun Club Road  
West Palm Beach, Florida 33406  
561-686-8800 FL WATS 1-800-432-2045  
[www.sfwmd.gov](http://www.sfwmd.gov)

MAILING ADDRESS P.O. Box 24680  
West Palm Beach, FL 33416-4680

\*Lake Istokpoga is not accessible from this boat ramp area.

For up-to-date information on navigating the Kissimmee River, contact the Okeechobee Service Center at (863) 462-5260 or (800) 250-4200, or the Orlando Service Center at (407) 858-6100 and (800) 250-4250.



For information on recreational opportunities throughout the District's 16-county jurisdiction, visit [www.sfwmd.gov/recreation](http://www.sfwmd.gov/recreation).