

January 2016



just the FACTs

This fact sheet is provided as a reference to encourage a greater understanding of the various issues related to managing water in South Florida.



For more information on this subject, scan this QR code using a barcode reader app on your smartphone.



sfwmd.gov
South Florida Water Management District
3301 Gun Club Road
West Palm Beach, Florida 33406
561-686-8800 FL WATS 1-800-432-2045
www.sfwmd.gov

MAILING ADDRESS P.O. Box 24680
West Palm Beach, FL 33416-4680

C-111 South Dade Project

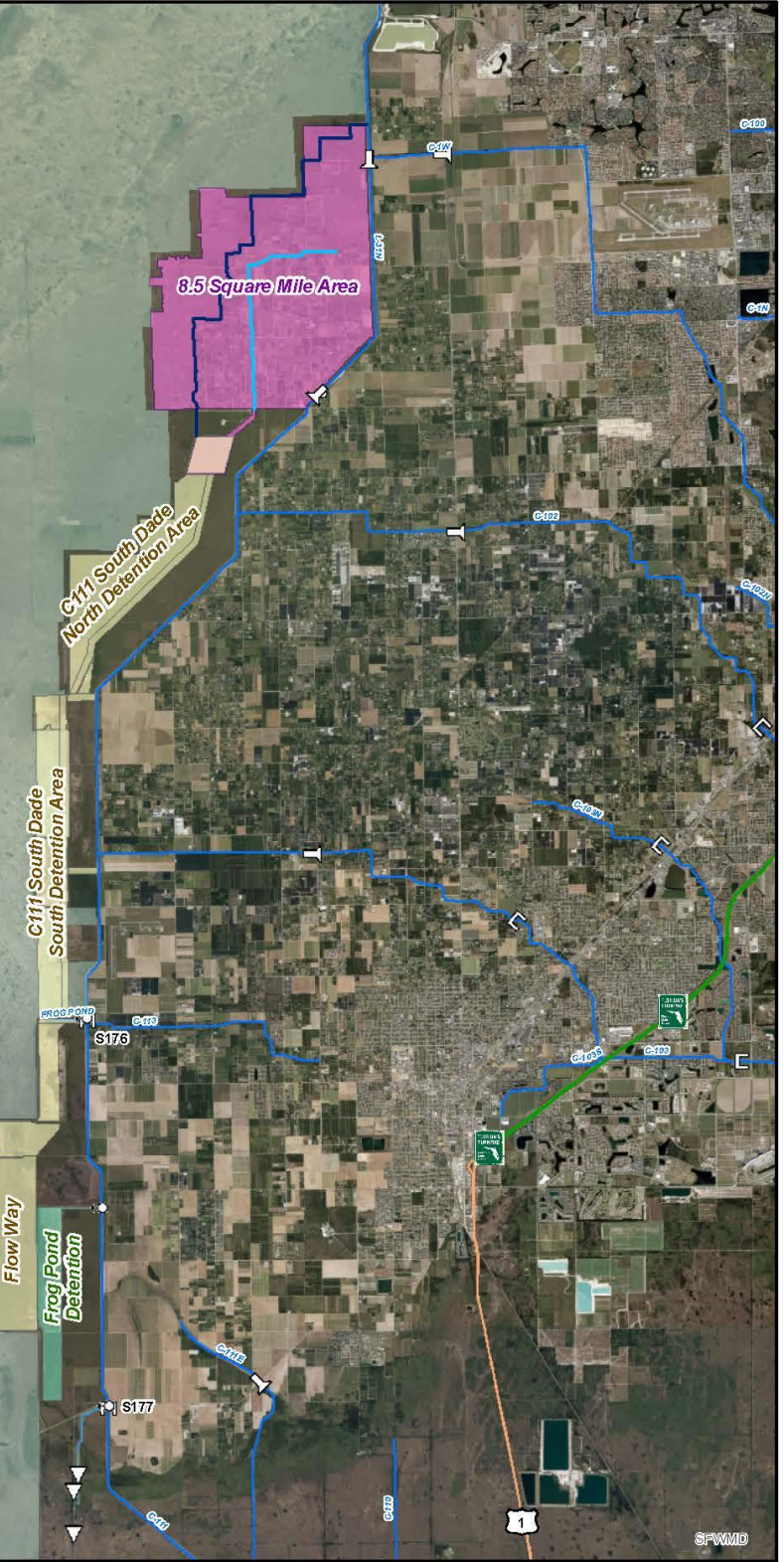
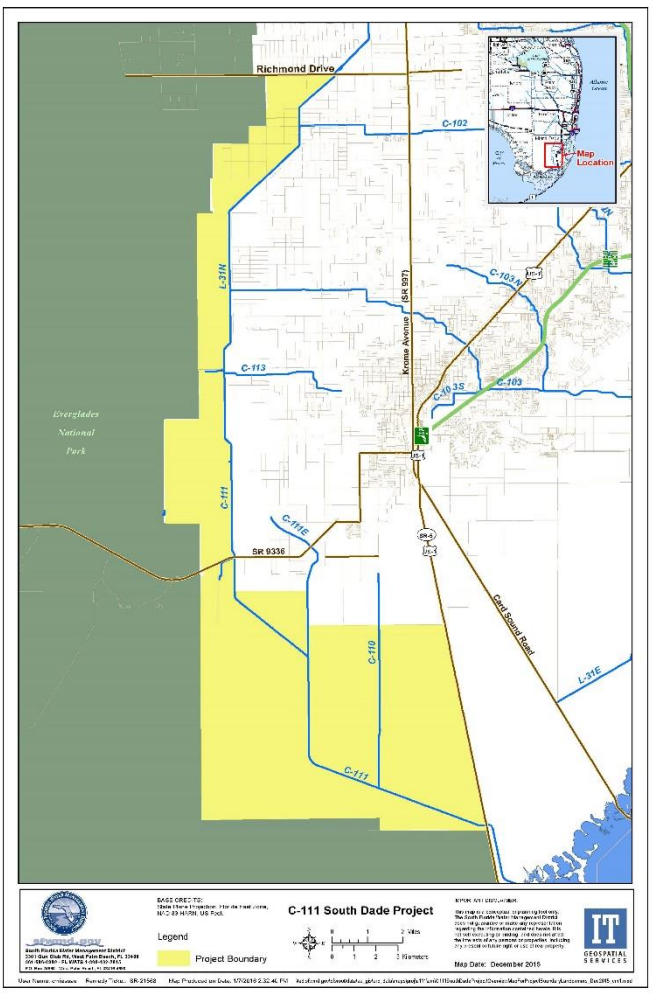
The C-111 South Dade Project in south Miami-Dade County is a partnership between the South Florida Water Management District and the U.S. Army Corps of Engineers. The project benefits the Taylor Slough basin as well as agricultural and urban lands. The \$300 million invested in project costs and land purchases will help restore critical ecosystems in the area and prevent groundwater from seeping out of Everglades National Park.

Project goals

- Connect the C-111 South Dade Project to the Modified Waters Deliveries to Everglades National Park Project
- Restore natural water conditions in Taylor Slough
- Restore and preserve thousands of acres of land critical to balancing the need for flood protection and ecosystem restoration
- Create a hydraulic barrier that prevents freshwater seeping out of Everglades National Park into nearby farmland
- Allow more water to flow into Everglades National Park including Florida Bay to restore natural salinity levels

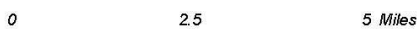
Current and Future Project Components

- Seven of the project's components have already been constructed.
- About 41,000 acres of land have been purchased by the South Florida Water Management District at a total cost of \$133 million for restoration. Another 500 acres are in the process of being purchased.
- The remaining components to be constructed include the removal of two pump stations and two spillways; the construction of flow ways; and plugs or fills in the western portion of the L-32 canal.
- The North Detention Area is also being built by the U.S. Army Corps of Engineers. This will connect the C-111 South Dade Project to the Modified Waters Deliveries to Everglades National Park Project.
- Several pump stations along the South Detention Area are currently being operated by the South Florida Water Management District.
- For more information about the C-111 South Dade and the Modified Waters Deliveries to Everglades National Park Project, visit www.evergladesrestoration.gov



South Dade Project Area

South Florida Water Management District
 3301 Gun Club Rd, West Palm Beach, FL 33406
 561-686-8800 - FL WATS 1-800-432-2045
 P.O. Box 24680 - West Palm Beach, FL 33416-4680



Map Date: January 2016