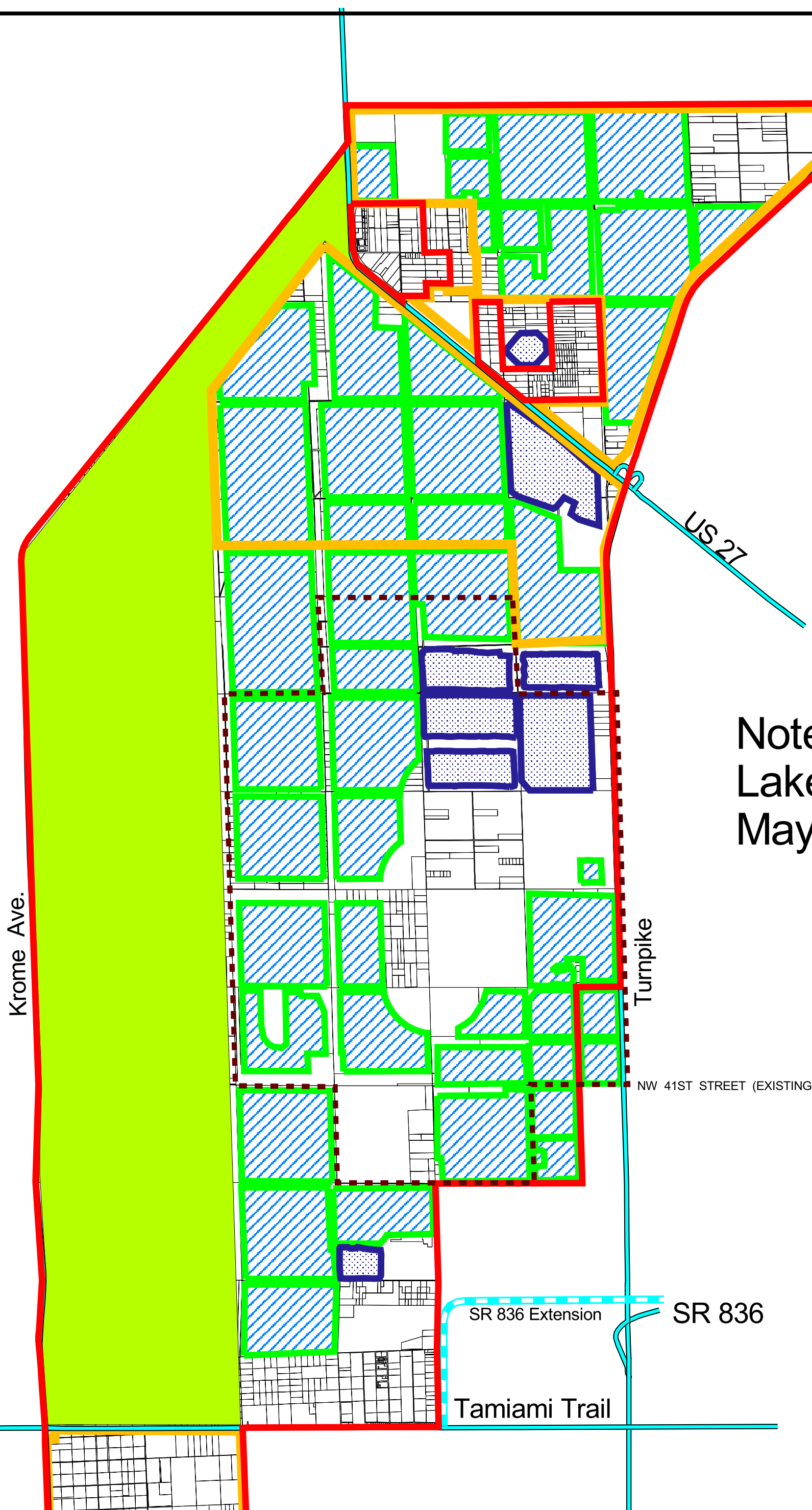









FIG. 8

Broward Co.
Miami - Dade Co.



Note:
Lake Shapes & Connectivity
May Vary (Not Shown)

-  Existing Completed Lakes
-  Potential Lake With 100' Wide Littoral Edge
-  Potential Mitigation (Restored Wet Prairie)
-  Lake Belt Boundary
-  Highways
-  Potential Footprint - CERP Components
-  Potential Additional Wellfield Protection

DRAFT



0 1 2 Miles

May 4, 2000

NOTICE: This map is a conceptual tool utilized for project development only. This map is not self-executing or binding, and does not otherwise affect the interests of any person, including any vested rights or existing uses of real property.

Lake Belt Phase II Detailed Master Plan Biological Scenario "A" Existing Practices / Trends

Wallace Roberts & Todd, LLC
EAS Engineering

NOTICE: This map was created using the Digital Land Database as an alignment base which is owned and copyrighted by FPL, 1999 and contains copyrighted material. The map and associated information is to be used only for public business and may be reproduced for use and no reproduction for commercial use or sale is permitted. No express or implied warranties including, but not limited to the implied warranties of MERCHANTABILITY and FITNESS FOR A PARTICULAR PURPOSE are made. The user is warned to utilize the materials herein at their own risk and to verify the material's accuracy independently and assumes the risk of any and all loss. For further information regarding license to use the Digital Land Database, please contact FPL.