



The South Florida Water Management District (SFWMD) is a regional governmental agency that oversees the water resources in 16 counties – from Orlando to the Florida Keys.

With a population of 8.7 million, this region covers 17,930 square miles (31 percent of the entire state) and includes vast areas of agricultural lands, water conservation areas and urban development.

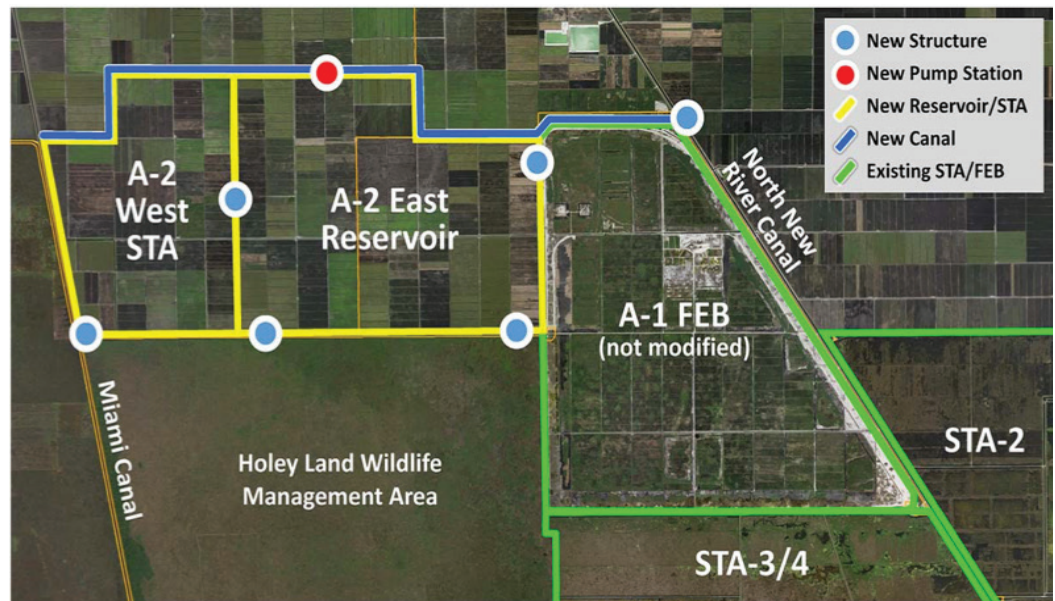
## OUR MISSION

To **SAFEGUARD** and **RESTORE** South Florida's water resources and ecosystems, **PROTECT** our communities from flooding, and **MEET** the region's water needs while **CONNECTING** with the public and stakeholders

### GOVERNING BOARD MEMBERS

- Chauncey Goss - Board Chairman
- Scott Wagner- Vice Chairman
- Ron Bergeron Sr.
- Benjamin Butler
- Carlos "Charlie" E. Martinez
- Cheryl Meads
- Charlette Roman
- Jay Steinle
- Jacqui Thurlow-Lippisch

# Everglades Agricultura Area (EAA) Storage Reservoir Project



The Everglades Agriculture Area (EAA) Storage Reservoir, an original component of the Comprehensive Everglades Restoration Plan (CERP), will significantly reduce the volume of damaging discharges from Lake Okeechobee to the northern estuaries and provide additional water storage, treatment and conveyance south to the Everglades. The project features include a 240,000 acre-foot reservoir, a 6,500-acre stormwater treatment area and canal conveyance improvements. Together with Congressionally-authorized projects, the reservoir will reduce Lake Okeechobee events discharges by 63 percent.

### Benefits of the EAA Storage Reservoir Project

- Provides a combined total of 350,000 acre-feet of storage south of the lake in conjunction with Florida's Restoration Strategies components.
- Meets state water quality standards.
- Meets Comprehensive Everglades Restoration Plan (CERP) goals for additional flows of water sent south to the Greater Everglades -- when used in conjunction with other planned restoration projects.

### Status of project

- SFWMD is constructing its portion of the project, the canal conveyance improvements and 6,500-acre stormwater treatment area.
- Work began in February 2020 with clearing, grubbing and muck removal.
- Construction for the inflow/outflow canal began in May 2020.
- Anticipated completion for canal conveyance improvements and stormwater treatment area is by 2023.
- The U.S. Army Corps of Engineers is building the 240,000 acre-foot reservoir.