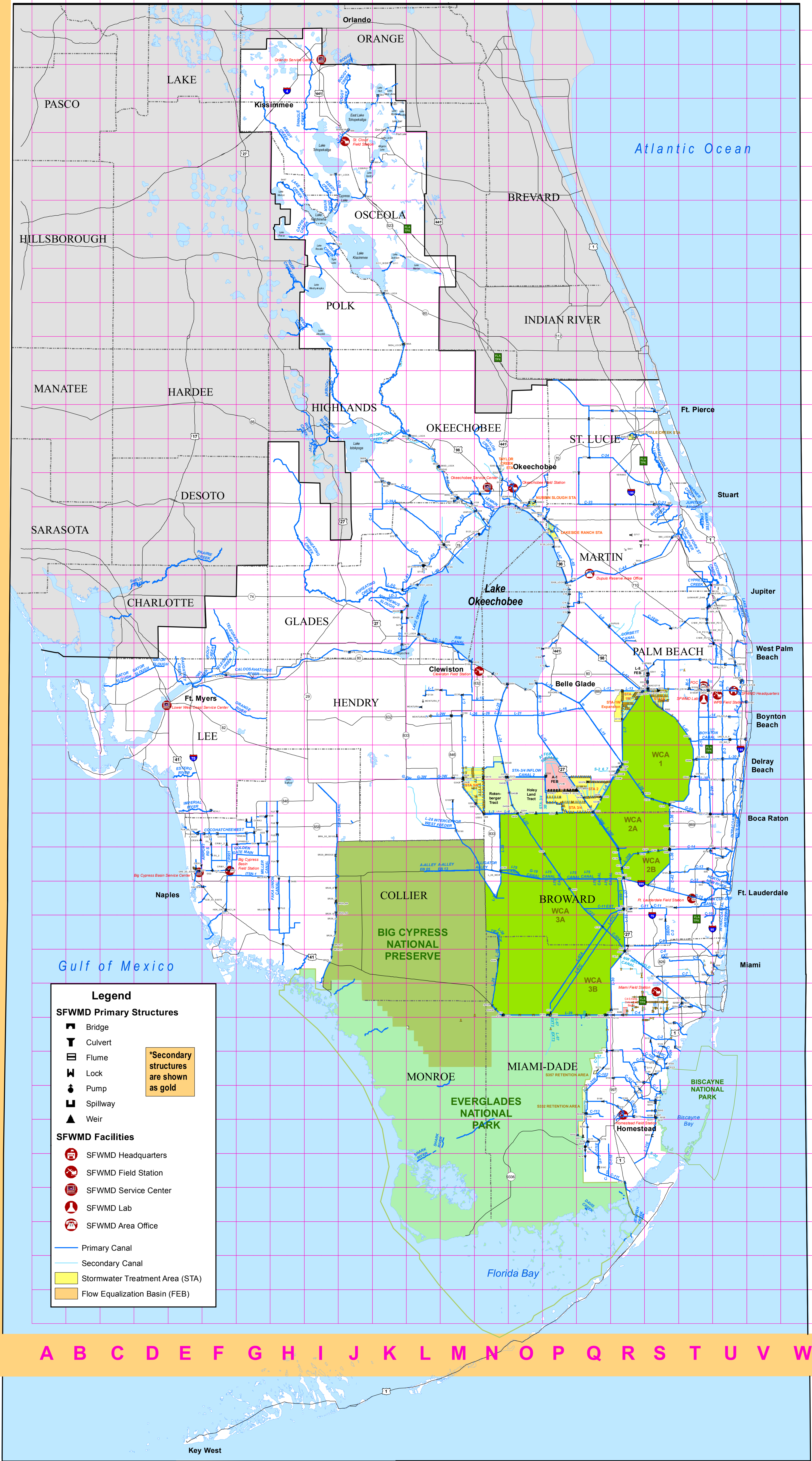


Table listing structure IDs and their corresponding grid coordinates (e.g., A1-1 Q 35, A1-2 Q 35, etc.)

1 2 3 4 5 6 7 8 9 10 11 12 13 14 15 16 17 18 19 20 21 22 23 24 25 26 27 28 29 30 31 32 33 34 35 36 37 38 39 40



Legend section defining symbols for SFWMD Primary Structures (Bridge, Culvert, Flume, Lock, Pump, Spillway, Weir), SFWMD Facilities (Headquarters, Field Station, Service Center, Lab, Area Office), and symbols for Primary/Secondary Canals, Stormwater Treatment Areas (STA), and Flow Equalization Basins (FEB).

Continuation of the structure index table, listing IDs and coordinates (e.g., S10A S 25, S10C S 25, etc.)

- Big Cypress Basin Field Station (239) 597-2256
Big Cypress Basin Service Center (239) 263-7615
Clewiston Field Station (863) 983-1431
Dupuis Management Area Office (561) 924-5310
Field Operations Center (FOC) (561) 753-2400
Fort Lauderdale Field Station (954) 452-4814
Homestead Field Station (305) 242-5933
Lower West Coast Service Center (239) 338-2929

FACILITY AND INFRASTRUCTURE LOCATION INDEX MAP

Map navigation elements including the South Florida Water Management District logo, a north arrow, scale bars in miles (0-30) and kilometers (0-60), and the Geospatial Services logo.

- Miami Field Station (305) 513-3420
Okeechobee Field Station (863) 462-5280
Okeechobee Service Center (863) 462-5260
Orlando Service Center (407) 858-6100
SFWMD Headquarters (561) 686-8800
St. Cloud Field Station (407) 891-3550
West Palm Beach Field Station (561) 791-4100

IMPORTANT DISCLAIMER: This map is a conceptual or planning tool only. The South Florida Water Management District does not guarantee or make any representation regarding the information contained herein. It is not self-executing or binding, and does not affect the interests of any persons or properties, including any present or future right or use of real property.