

SOUTH FLORIDA WATER MANAGEMENT DISTRICT

SFWMD Flood Control Mission

sfwmd.gov

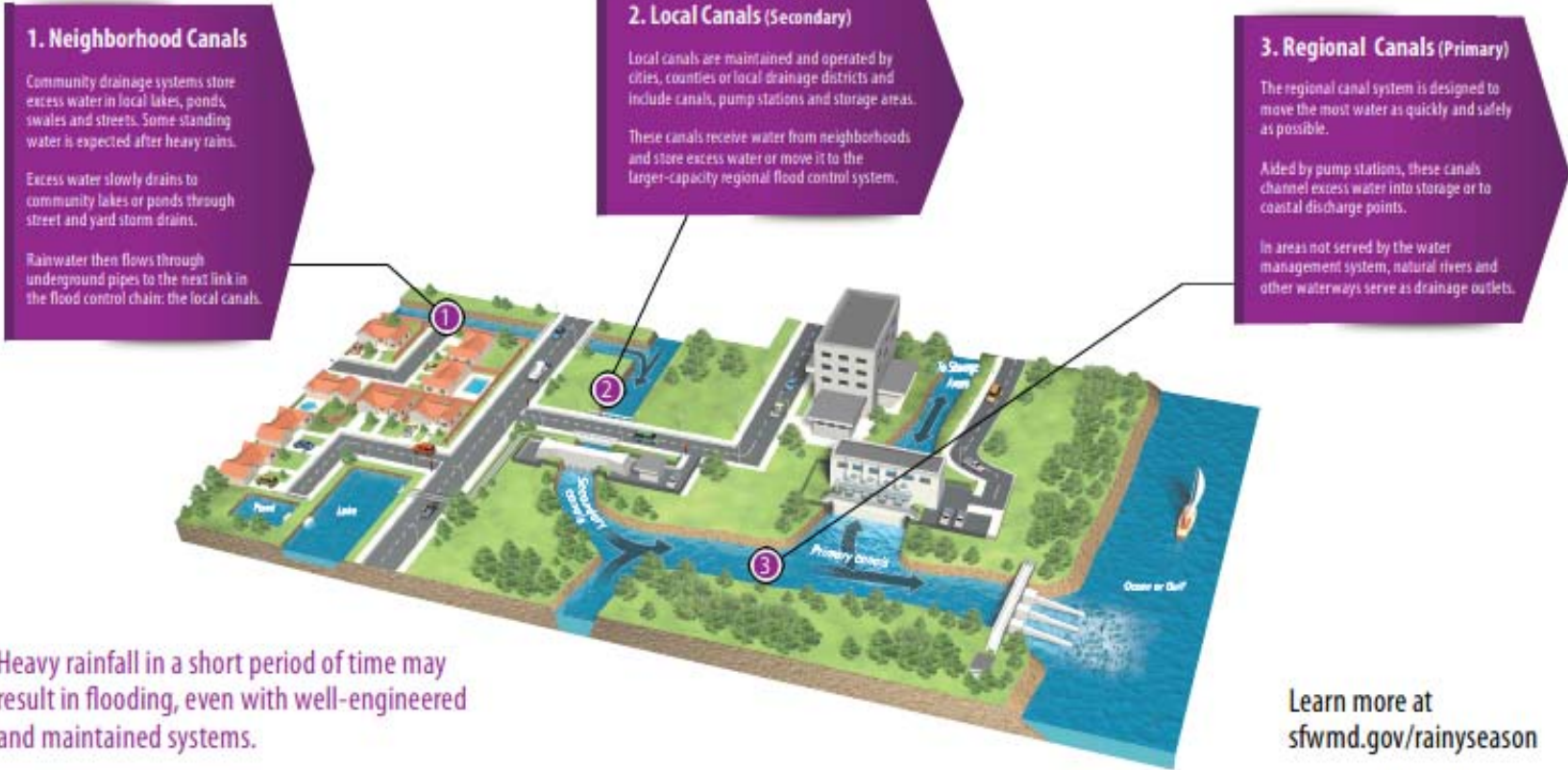
District's Flood Protection System

- **1950s provided flood control to 2 million citizens**
- **Today provide flood control to 8 million citizens**
 - **Investment of capital into infrastructure**
 - **Automation/technology**

How big is the system?

- **\$13 billion of infrastructure**
- **70 pump stations**
- **607 water control structures**
- **2,100 miles of canals**
- **2,000 miles of levees**
- **625 project culverts**
- **Operated and maintained by Field Stations, SCADA, and Water Control Operations...
475 Staff Members**

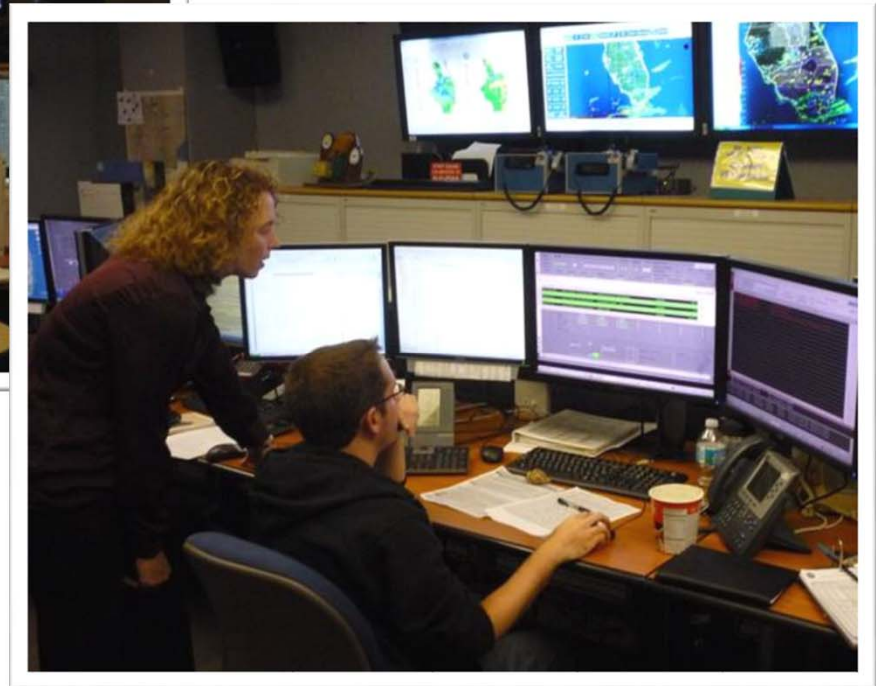
Three Tiered System



Operation Control Center (OCC)

- **Canal levels are monitored through extensive network of gauges**
- **Structures have automatic control**
- **Rainfall is monitored and amounts are forecasted daily**
- **Primary Modes**
 - **Flood Control**
 - **Water Supply**

Operations Control



Remotely Operated Structures

Operable Culverts



Spillways



Pump Stations



Weirs



S-5A Pump Station



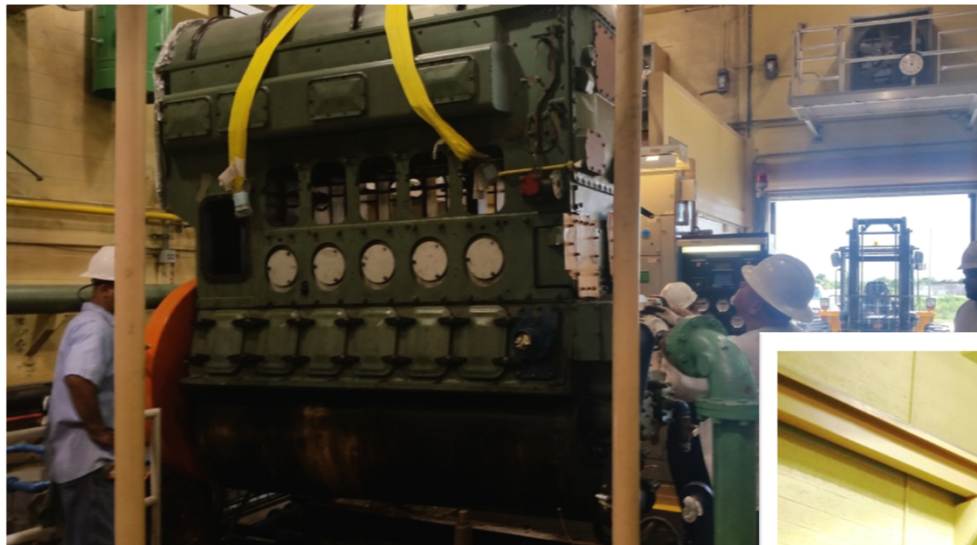
Protecting Equipment in a Storm



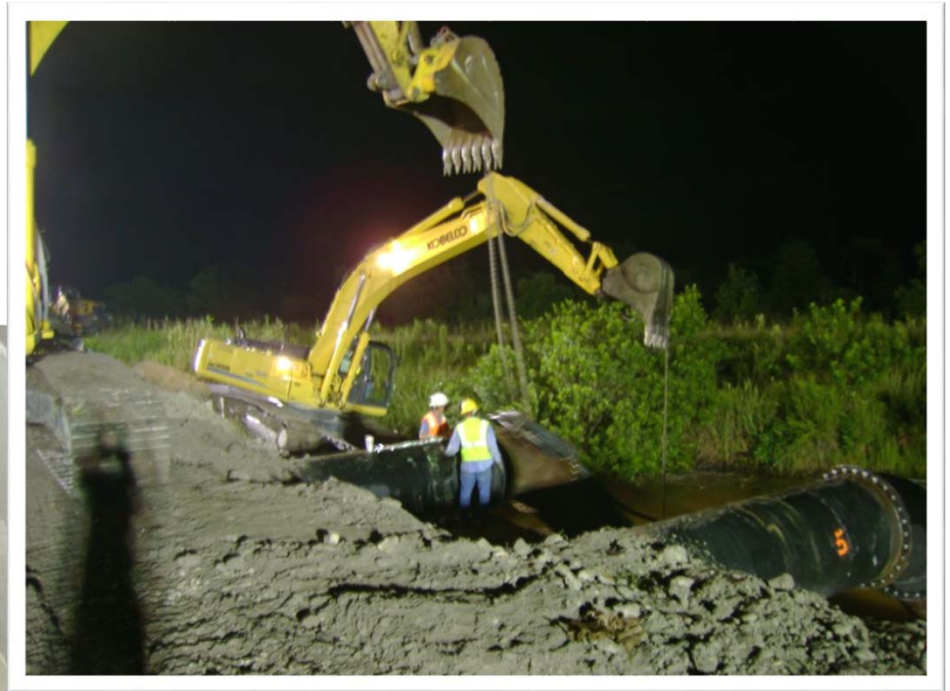
Supervisory Control and Data Acquisition (SCADA)



Pump Stations



Pump Stations

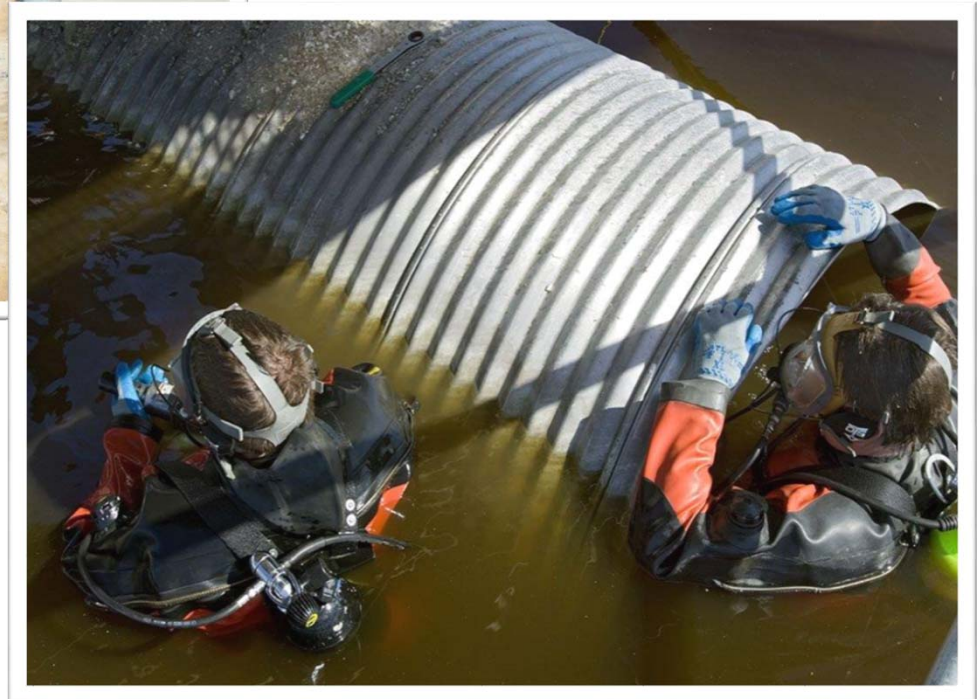


Structure Maintenance



Glades County: Structure S-235 gate replacement.

Structure Maintenance



Canal Levee Maintenance



Broward County: Spraying the East Coast Protective Levee bench area



How do you operate and maintain \$13 billion of infrastructure?

It's all about the staff...

