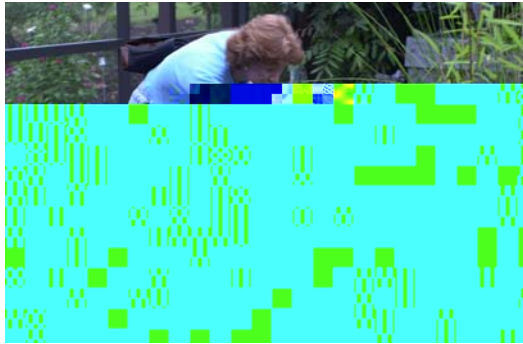


## DuPuis Visitor Center



*A mother and son explore a pond at the DuPuis visitors' center.*



*One of the indoor Display areas at the Visitor Center*

At the westernmost end of the property, Gate 5 is the entrance to the DuPuis offices and visitors' center. It is nearly a mile to the west of Gate 3. The center is now open most Saturdays from 9 a.m. to noon. Even when the center is closed, you may still enjoy the property by entering at Gates 1, 2 or 3. Ample parking is behind the center.

Just outside the backdoor, you will find a butterfly garden and on the east side of the center is a newly constructed interpretive wetland and cypress forest with concrete and mulched trails.



*Butterfly Garden at DuPuis*



*Handicapped accessible concrete section DuPuis habitat trail.*



*Mulched portion DuPuis habitat trail.*



*Muhly grass in bloom along DuPuis habitat trail*