

HYDROGEOLOGIC RECONNAISSANCE

OF LEE COUNTY, FLORIDA PART 2 : ATLAS

PREPARED BY :
GROUND WATER DIVISION

SOUTH FLORIDA WATER MANAGEMENT DISTRICT

TECHNICAL PUBLICATION 82-1

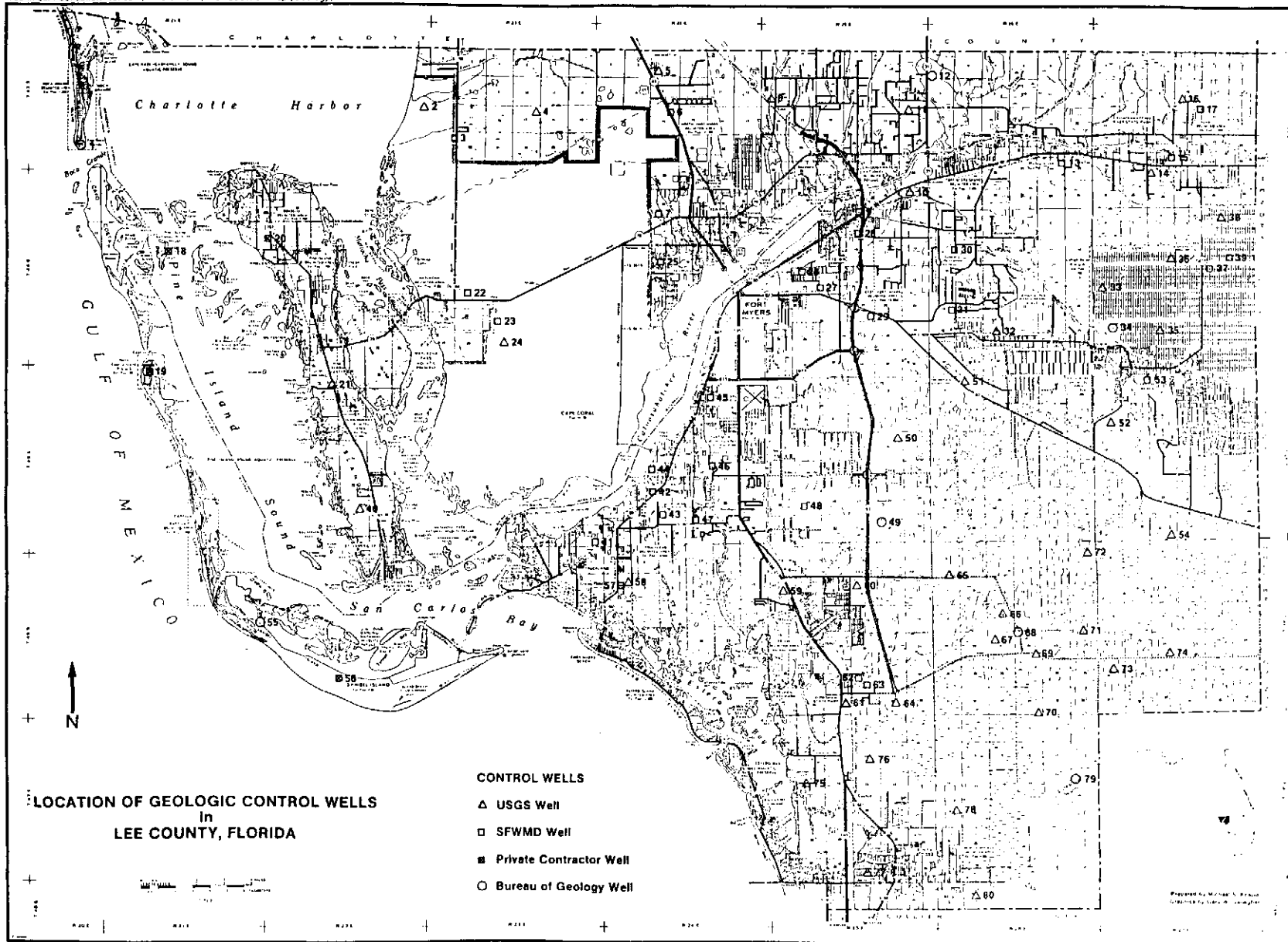
January, 1982

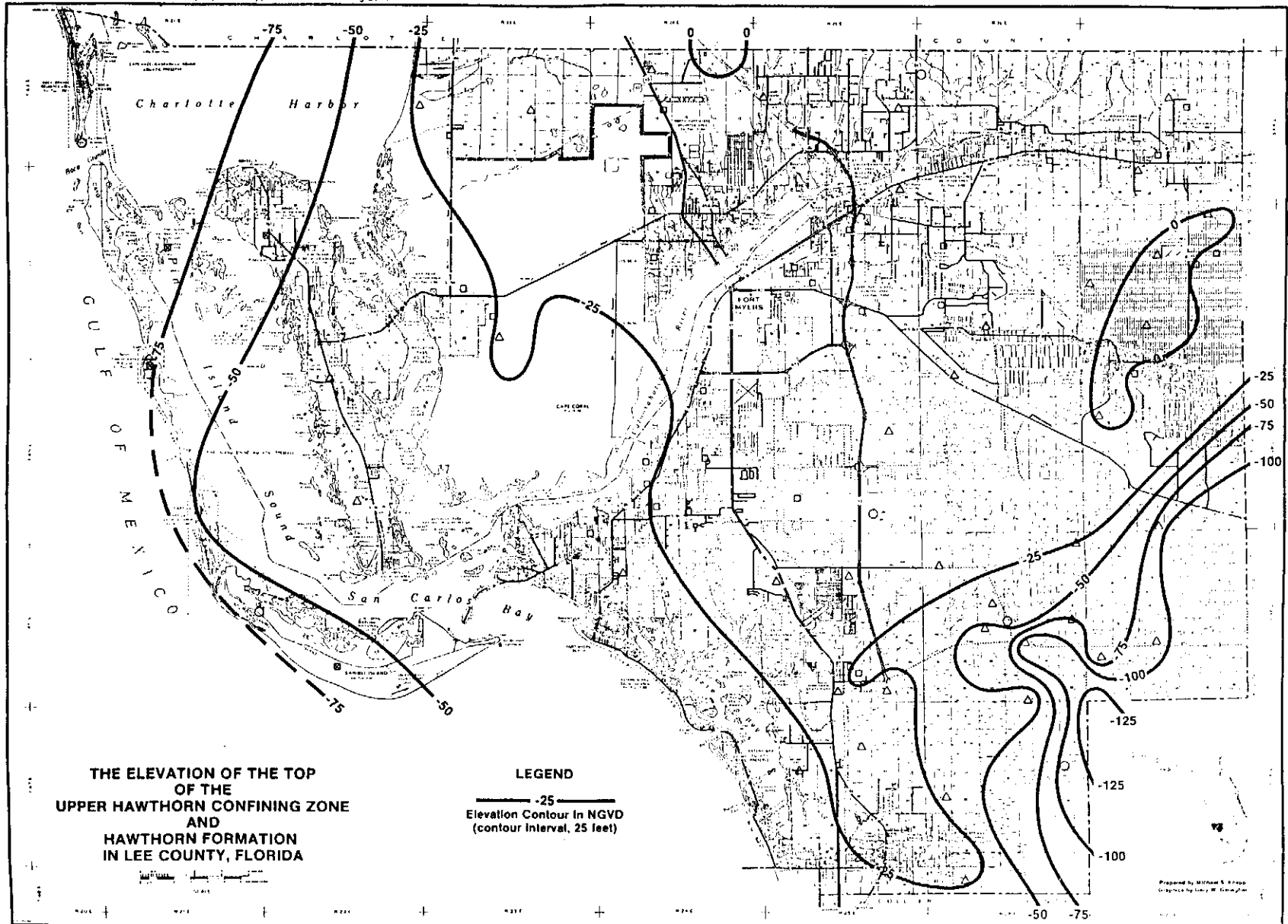
This Atlas is designed to
be used in conjunction
with Part 1 (Text) and
Part 3 (Appendices) of this
Report.

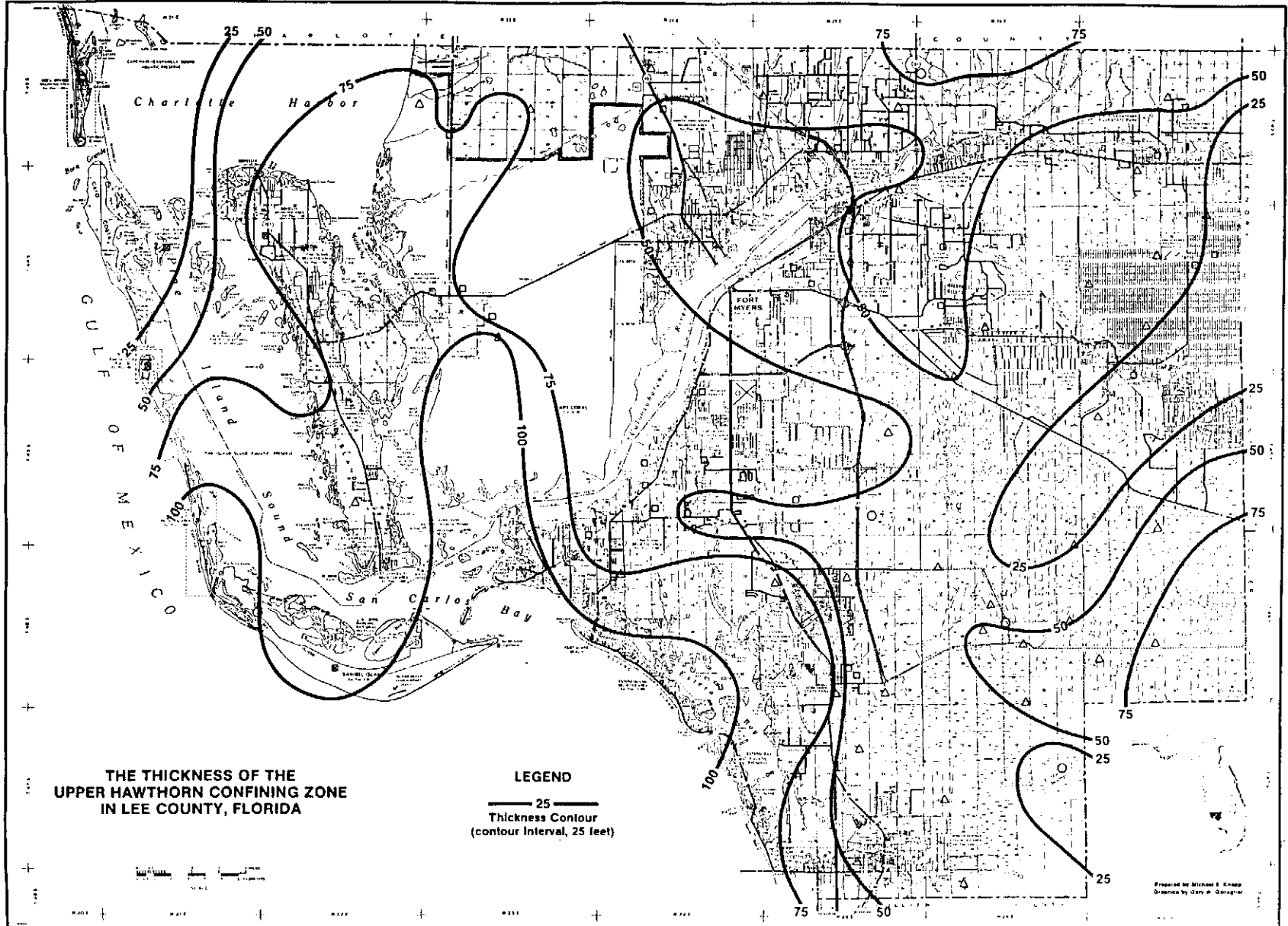
DRE - 151

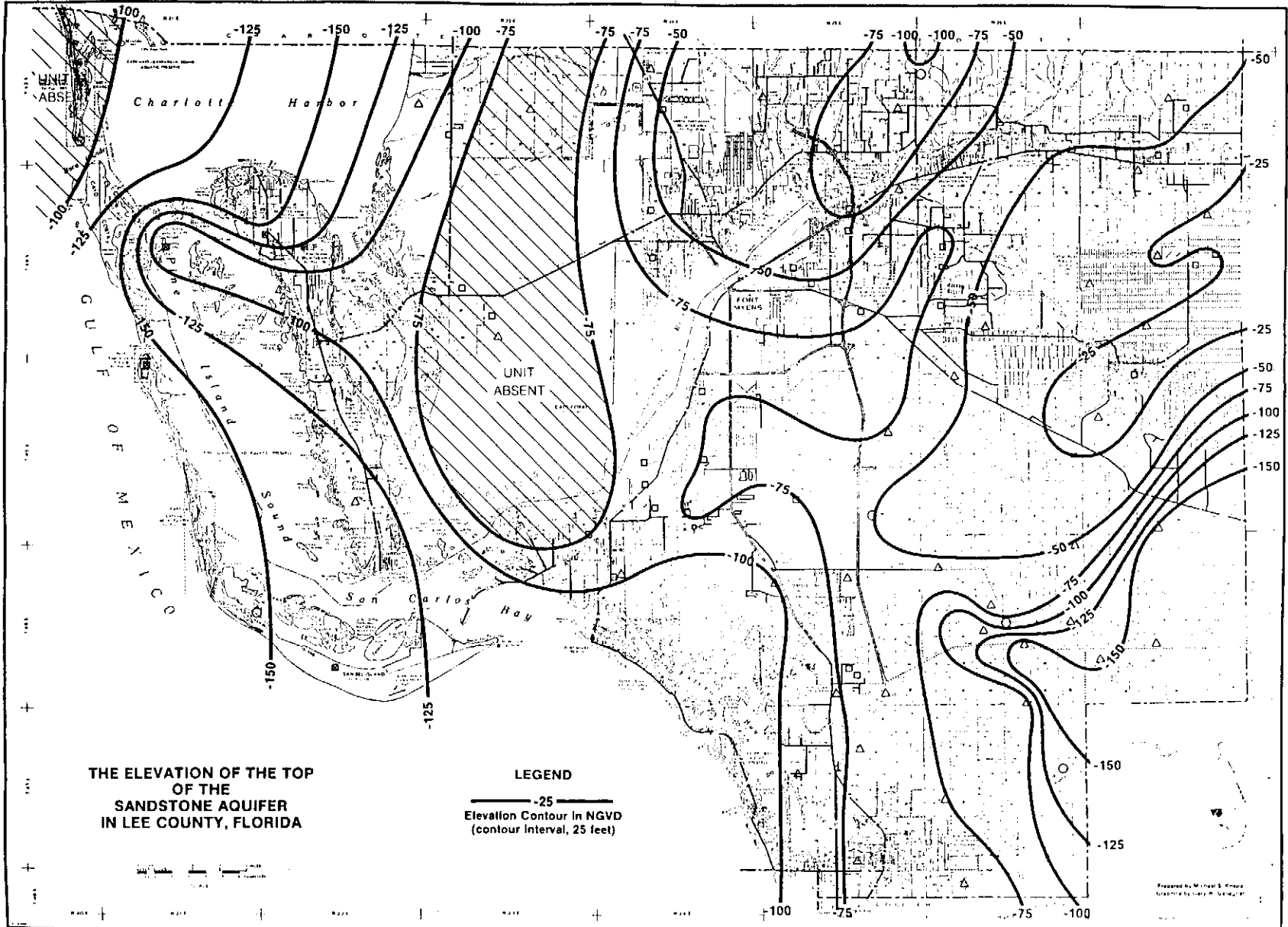
TABLE OF CONTENTS

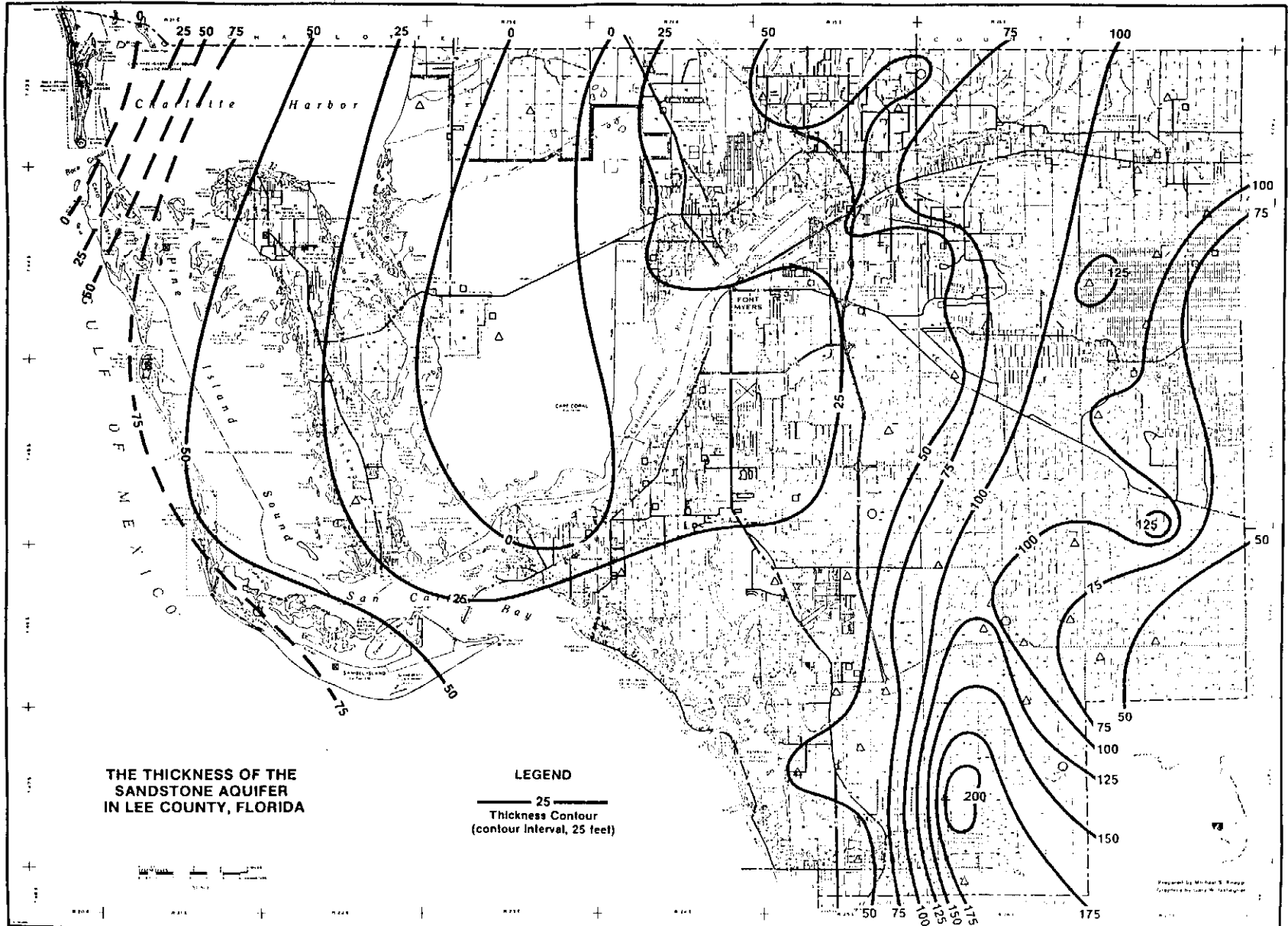
- PLATE NO. 1 - LOCATION OF GEOLOGIC CONTROL WELLS IN LEE COUNTY, FLORIDA
- PLATE NO. 2 - THE THICKNESS OF THE SURFICIAL AQUIFER IN LEE COUNTY, FLORIDA
- PLATE NO. 3 - THE ELEVATION OF THE TOP OF THE UPPER HAWTHORN CONFINING ZONE AND HAWTHORN FORMATION IN LEE COUNTY, FLORIDA
- PLATE NO. 4 - THE THICKNESS OF THE UPPER HAWTHORN CONFINING ZONE IN LEE COUNTY, FLORIDA
- PLATE NO. 5 - THE ELEVATION OF THE TOP OF THE SANDSTONE AQUIFER IN LEE COUNTY, FLORIDA
- PLATE NO. 6 - THE THICKNESS OF THE SANDSTONE AQUIFER IN LEE COUNTY, FLORIDA
- PLATE NO. 7 - THE ELEVATION OF THE TOP OF THE MID-HAWTHORN CONFINING ZONE IN LEE COUNTY, FLORIDA
- PLATE NO. 8 - THE ELEVATION OF THE TOP OF THE MID-HAWTHORN AQUIFER IN LEE COUNTY, FLORIDA
- PLATE NO. 9 - THE ELEVATION OF THE TOP OF THE LOWER HAWTHORN/TAMPA PRODUCING ZONE IN LEE COUNTY, FLORIDA
- PLATE NO. 10 - THE THICKNESS OF THE HAWTHORN FORMATION IN LEE COUNTY, FLORIDA
- PLATE NO. 11 - THE THICKNESS OF THE LOWER CARBONATE MEMBER OF THE HAWTHORN FORMATION IN LEE COUNTY, FLORIDA
- PLATE NO. 12 - THE ELEVATION OF THE TOP OF THE SUWANNEE LIMESTONE IN LEE COUNTY, FLORIDA
- PLATE NO. 13 - THE LOCATION OF THE HYDROGEOLOGIC CROSS SECTIONS IN LEE COUNTY, FLORIDA
- PLATE NO. 14 - HYDROGEOLOGIC CROSS SECTION A-A'
- PLATE NO. 15 - HYDROGEOLOGIC CROSS SECTION B-B'
- PLATE NO. 16 - HYDROGEOLOGIC CROSS SECTION D-D'
- PLATE NO. 17 - HYDROGEOLOGIC CROSS SECTION E-E'
- PLATE NO. 18 - HYDROGEOLOGIC CROSS SECTION F-F'
- PLATE NO. 19 - HYDROGEOLOGIC CROSS SECTION C-C' AND G-G'
- PLATE NO. 20 - HYDROGEOLOGIC CROSS SECTION H-H' AND I-I'
- PLATE NO. 21 - WATER LEVEL IN THE SURFICIAL AQUIFER (MARCH-1979) IN LEE COUNTY, FLORIDA
- PLATE NO. 22 - WATER LEVEL IN THE SURFICIAL AQUIFER (SEPTEMBER-1979) IN LEE COUNTY, FLORIDA
- PLATE NO. 23 - POTENTIOMETRIC SURFACE OF THE SANDSTONE AQUIFER (MARCH -1979) IN LEE COUNTY, FLORIDA
- PLATE NO. 24 - POTENTIOMETRIC SURFACE OF THE SANDSTONE AQUIFER (SEPTEMBER-1979) IN LEE COUNTY, FLORIDA
- PLATE NO. 25 - POTENTIOMETRIC SURFACE OF THE MID-HAWTHORN AQUIFER (MARCH-1979) IN LEE COUNTY, FLORIDA
- PLATE NO. 26 - POTENTIOMETRIC SURFACE OF THE MID-HAWTHORN AQUIFER (SEPTEMBER-1979) IN LEE COUNTY, FLORIDA
- PLATE NO. 27 - POTENTIOMETRIC SURFACE OF THE LOWER HAWTHORN AQUIFER (MARCH-1979) IN LEE COUNTY, FLORIDA
- PLATE NO. 28 - POTENTIOMETRIC SURFACE OF THE LOWER HAWTHORN AQUIFER (SEPTEMBER-1979) IN LEE COUNTY, FLORIDA





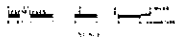




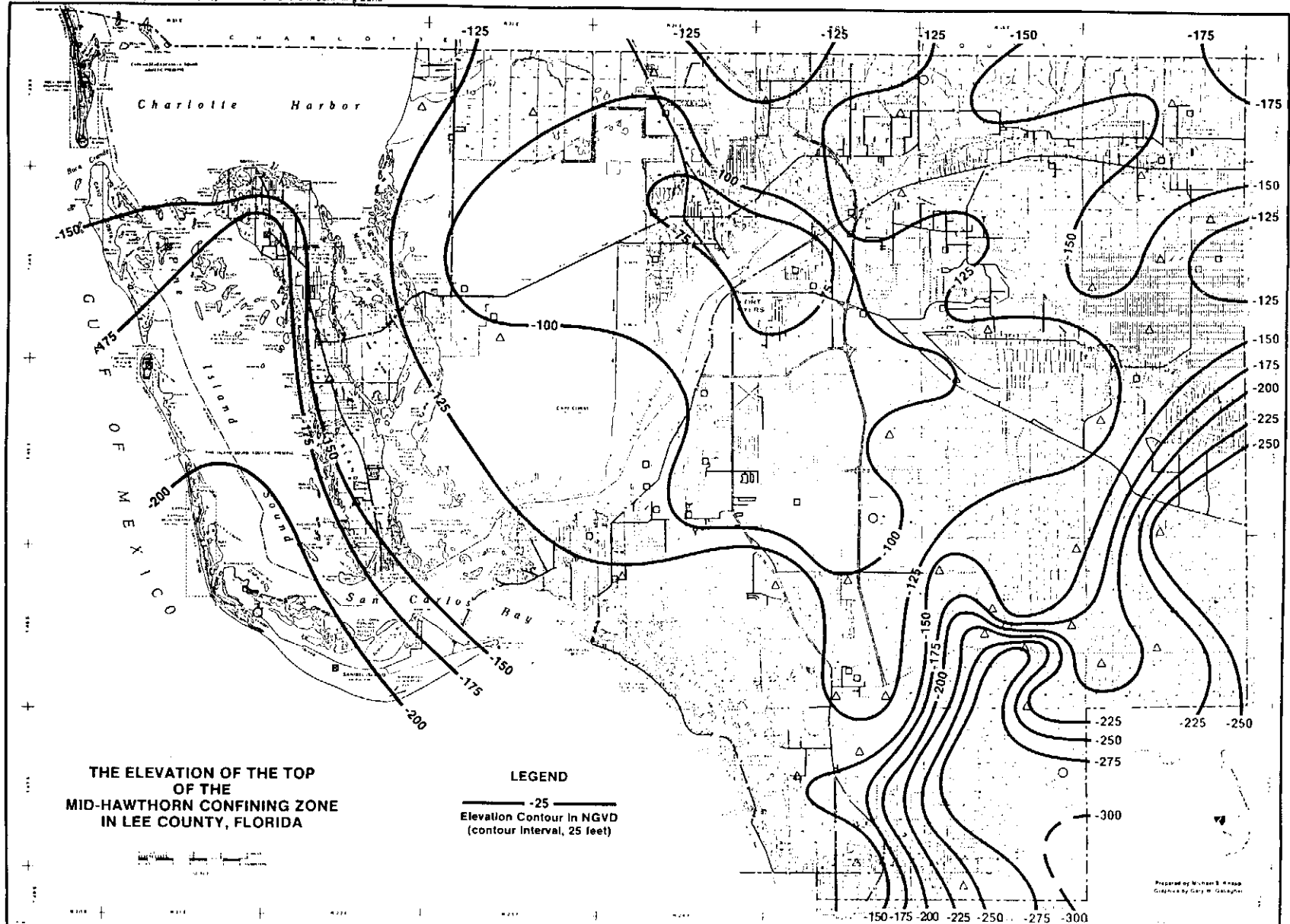


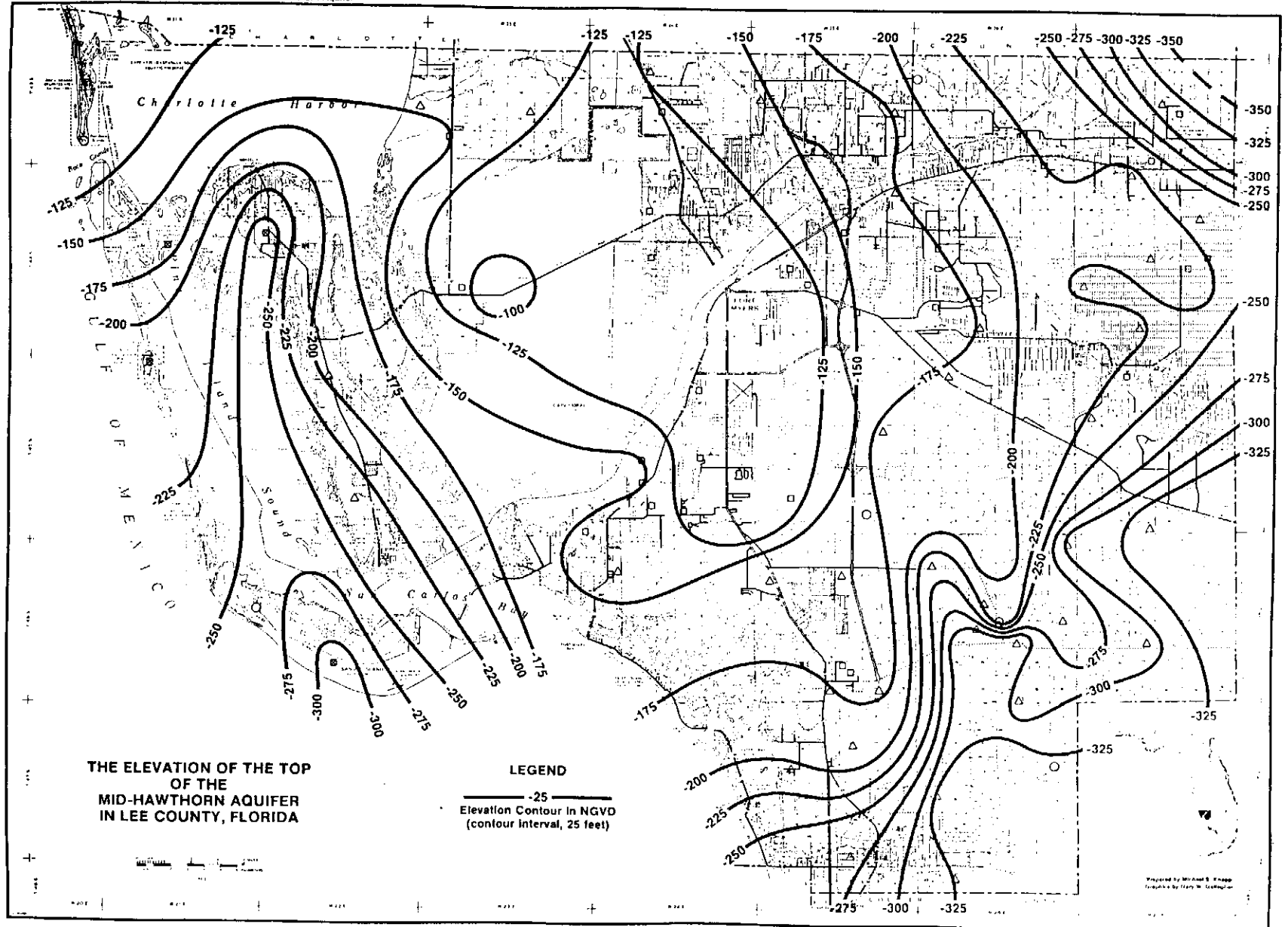
THE THICKNESS OF THE SANDSTONE AQUIFER IN LEE COUNTY, FLORIDA

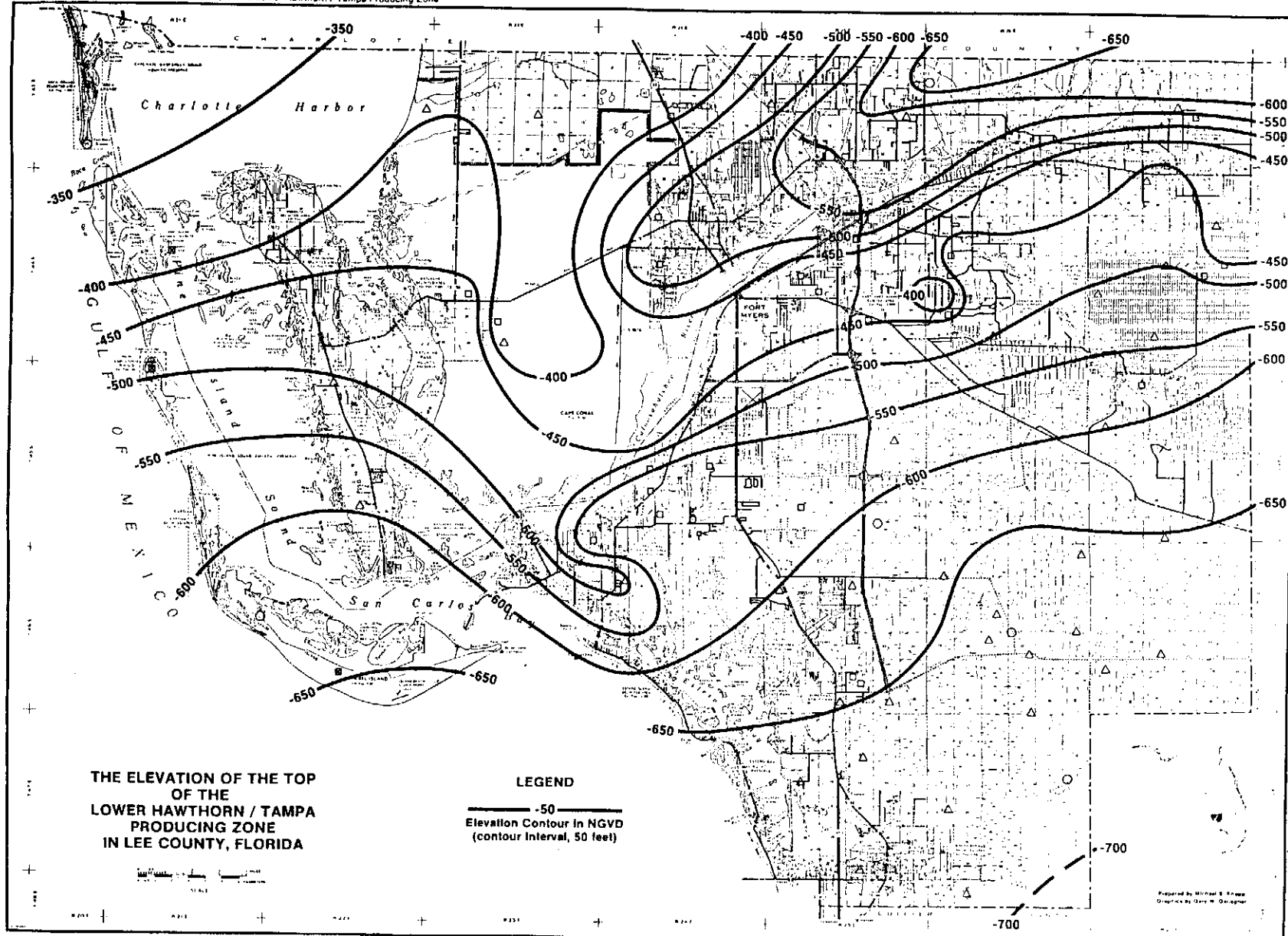
LEGEND
—— 25 ——
Thickness Contour
(contour interval, 25 feet)



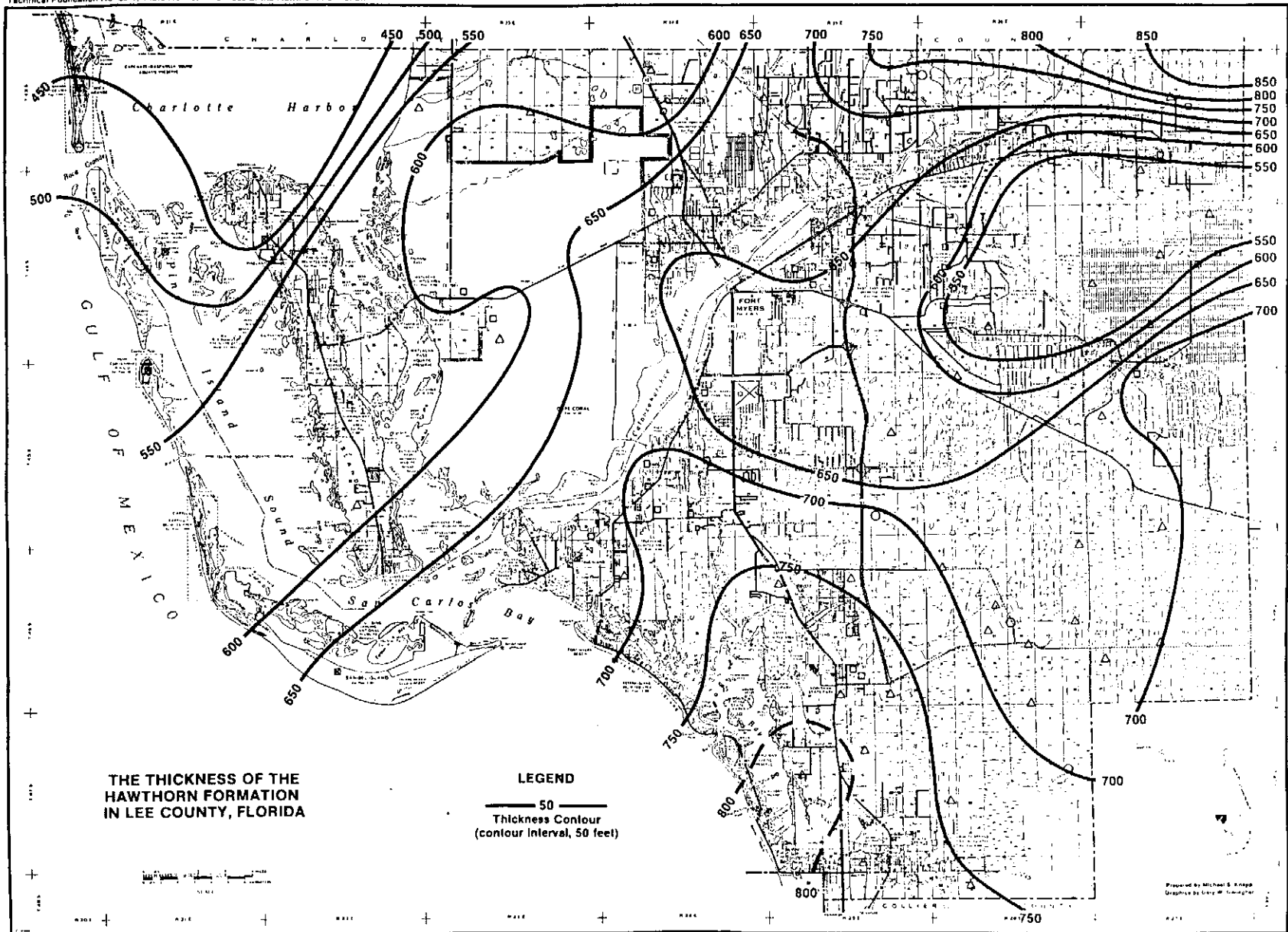
Prepared by Michael S. Brady
Geologist in Charge, U.S. Geological Survey

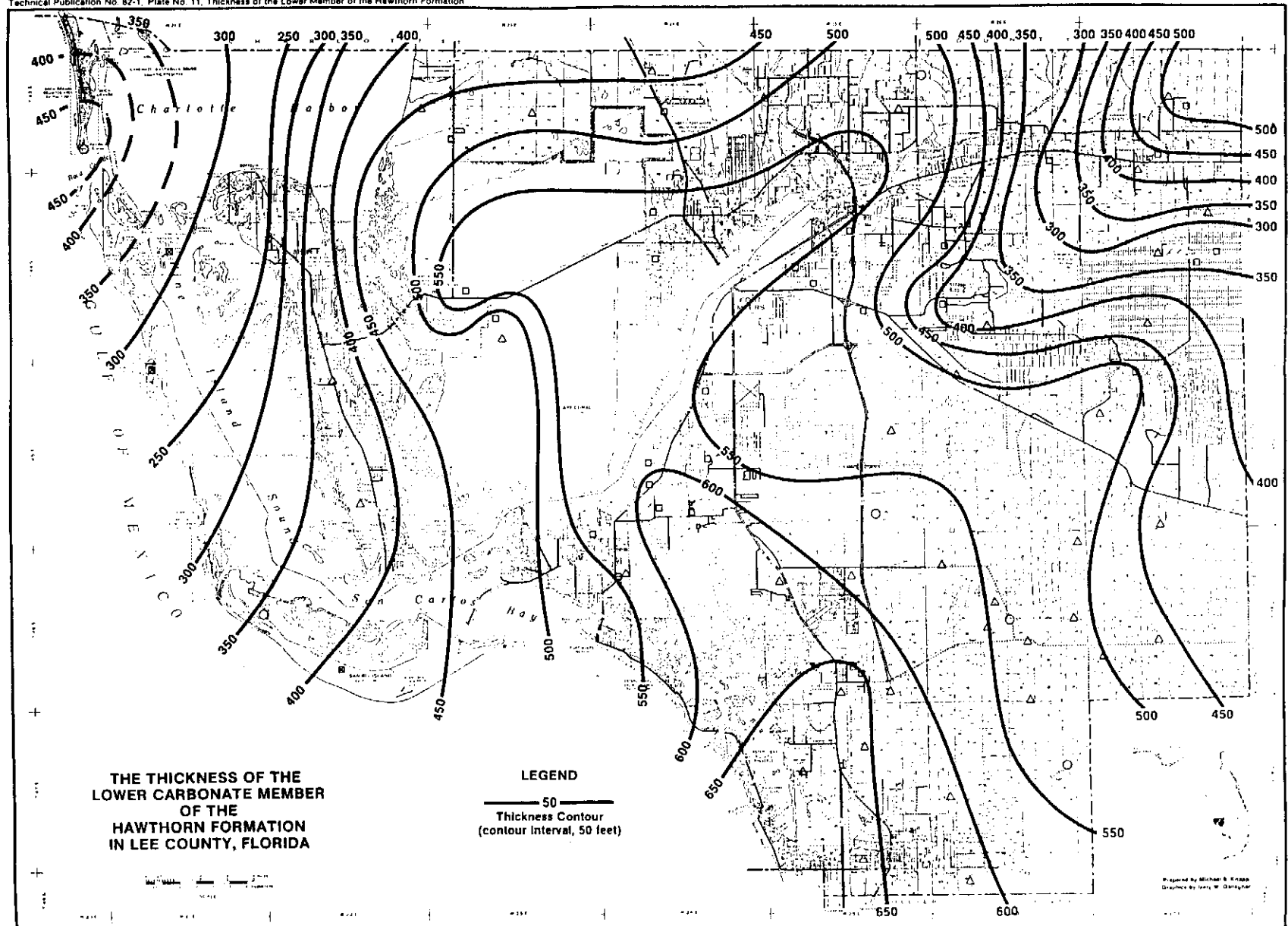


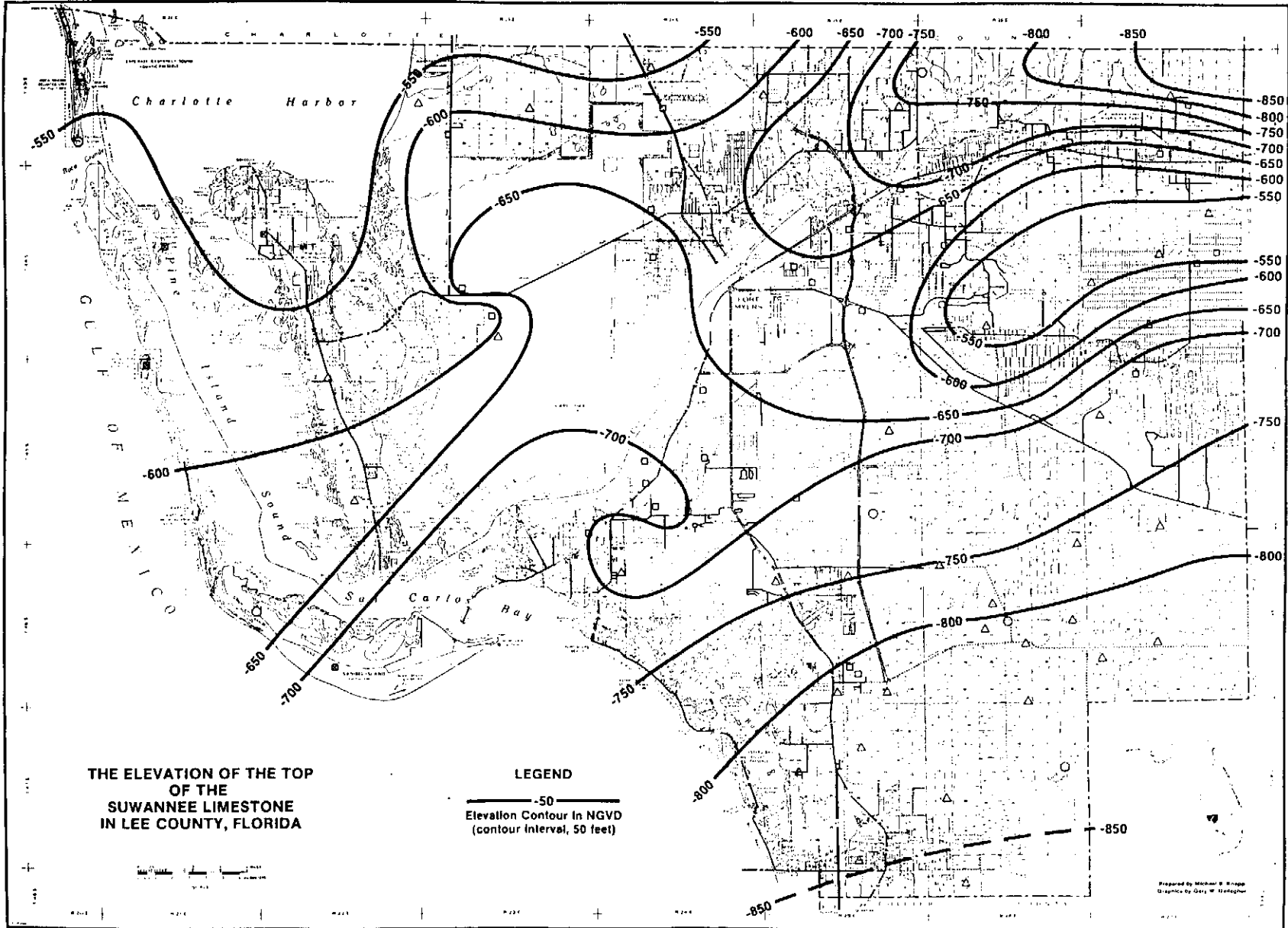


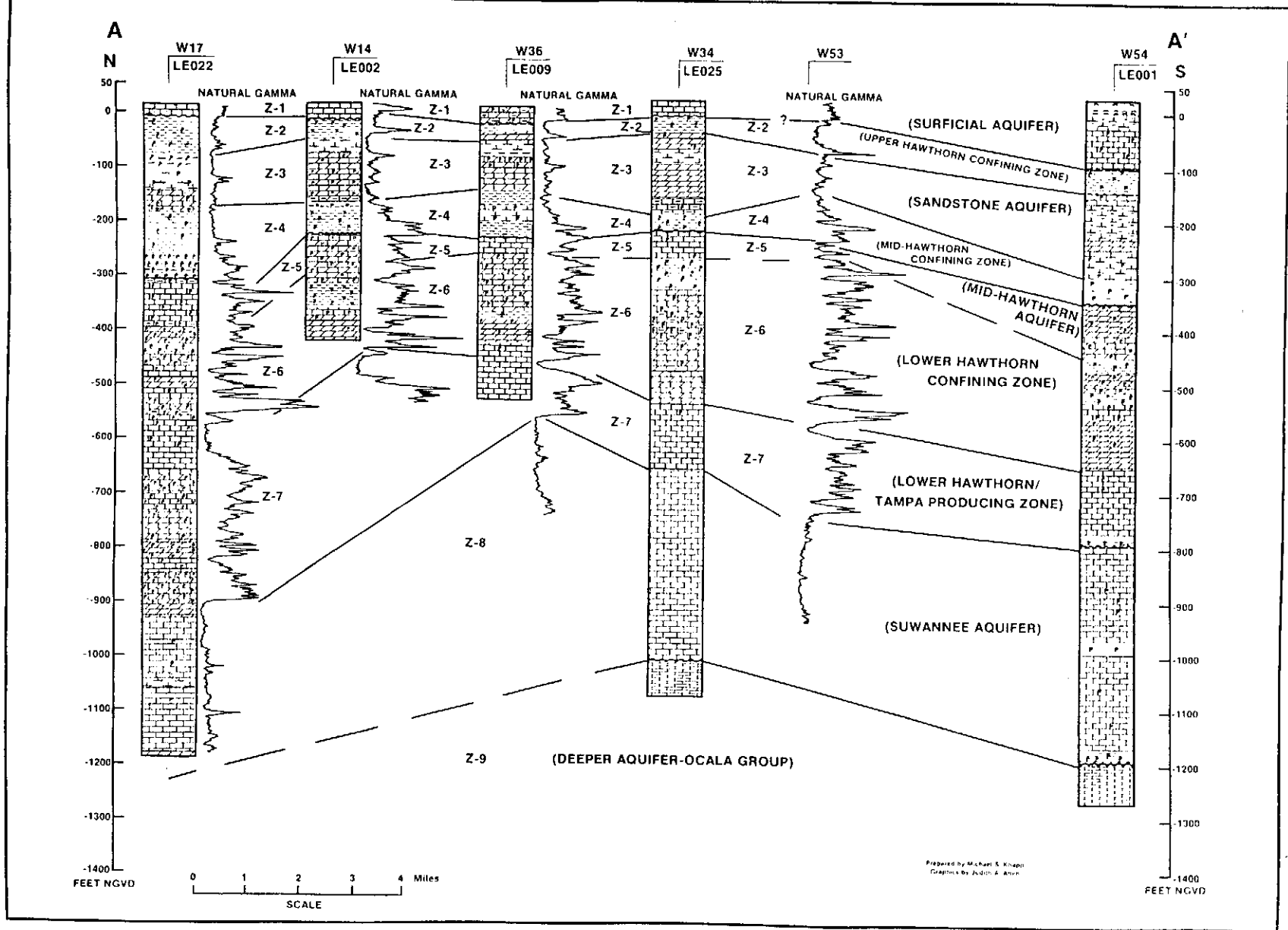


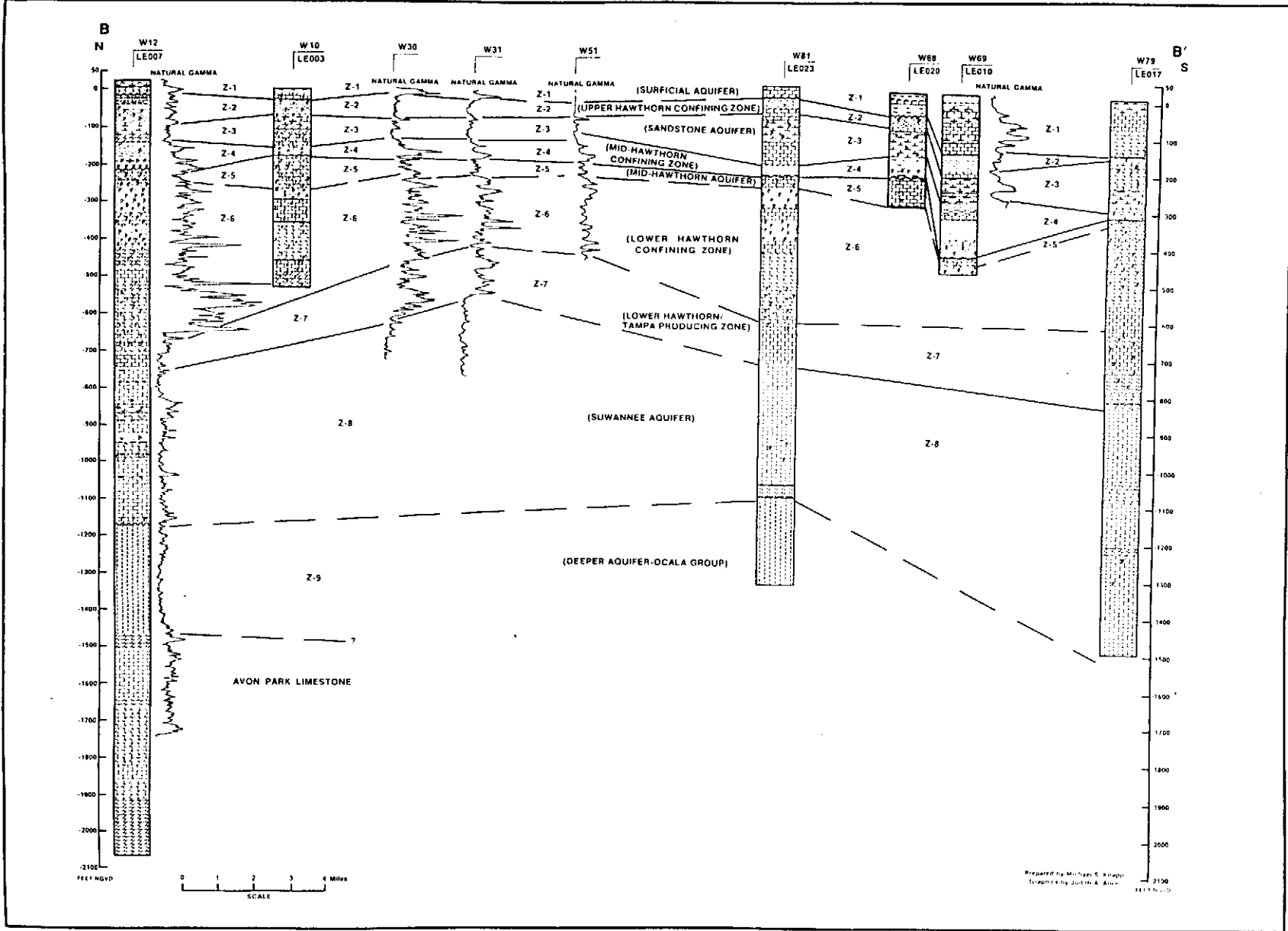
Prepared by Michael S. Kruse
Digitized by Gary W. Grogan

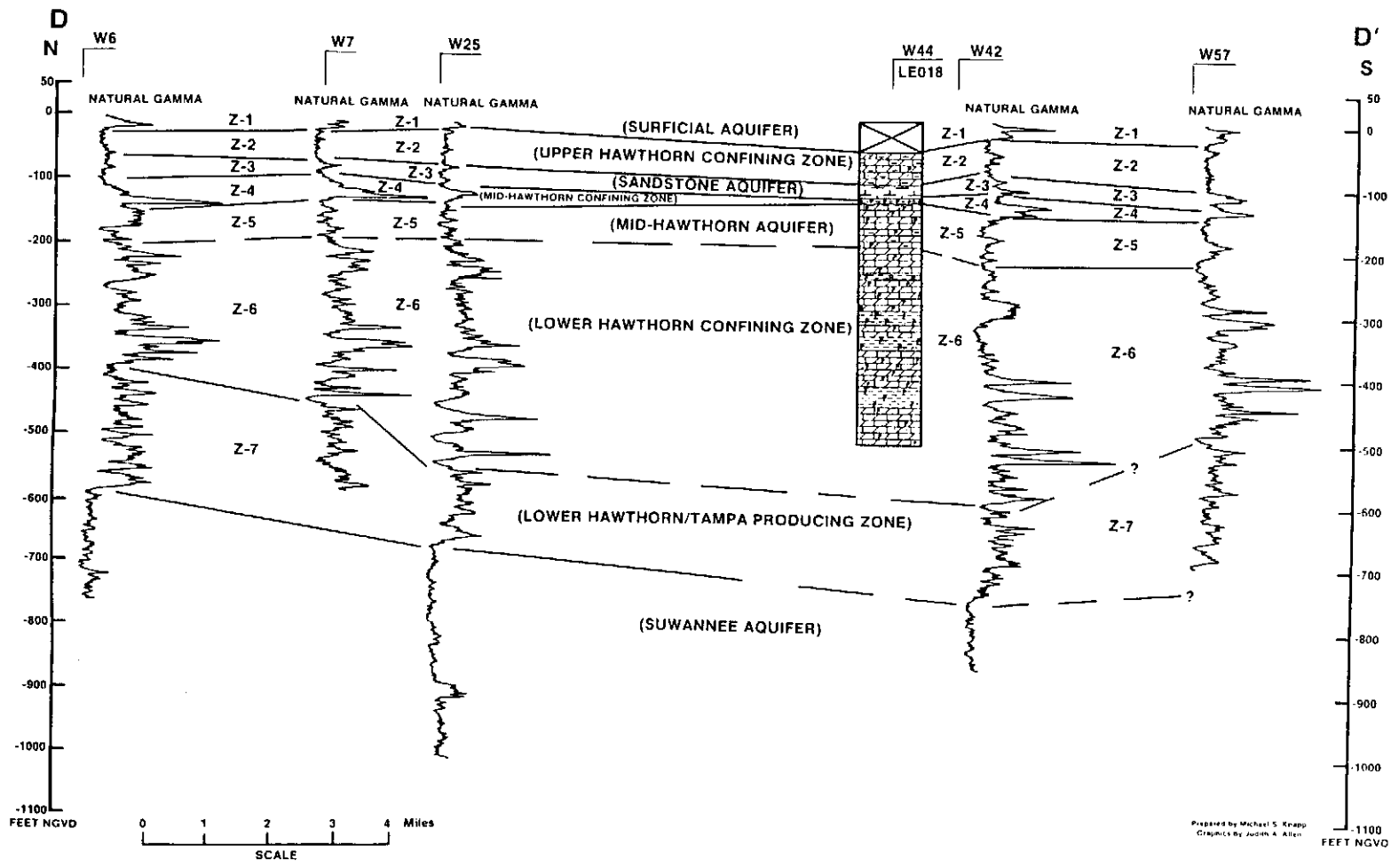


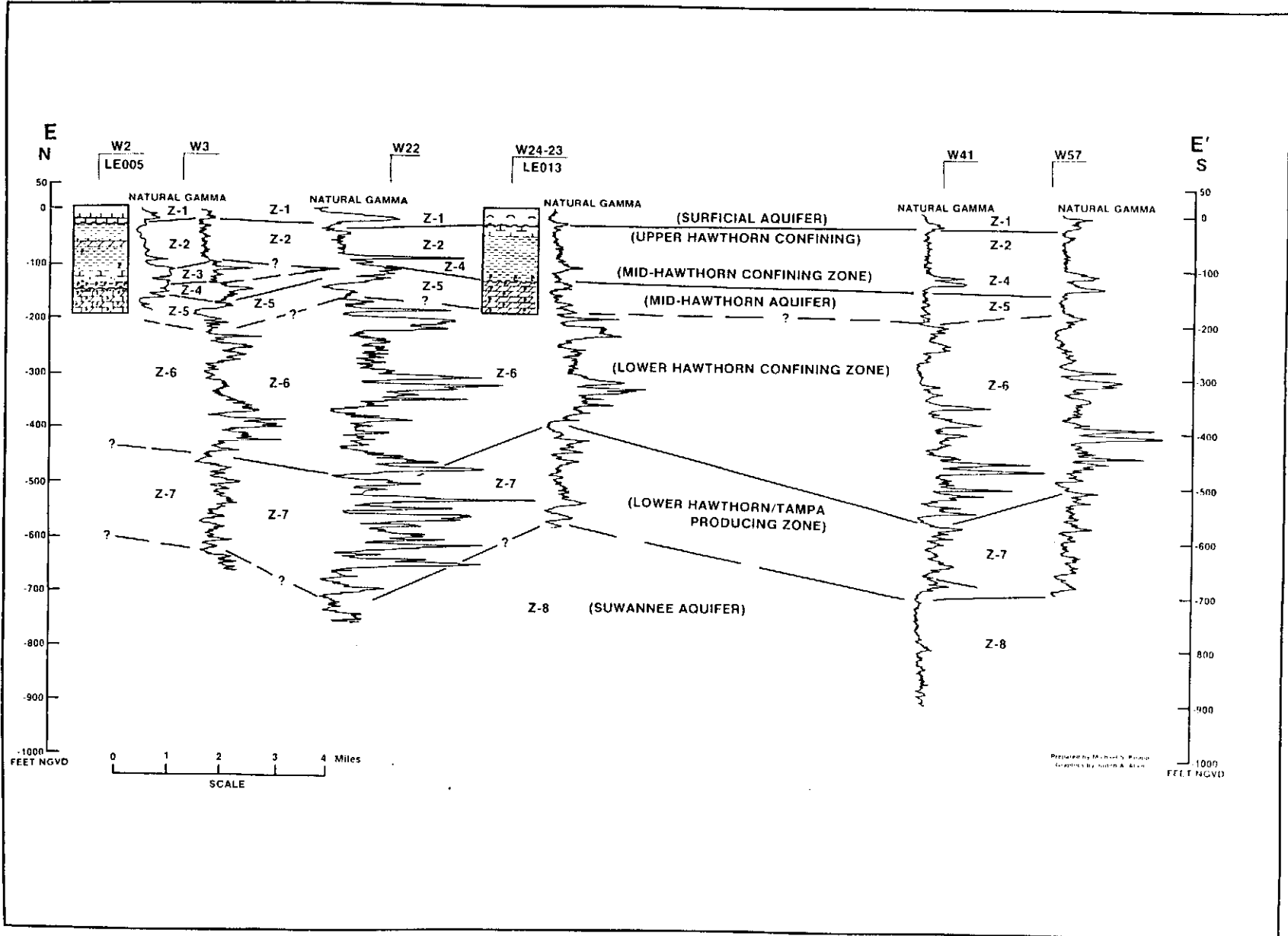


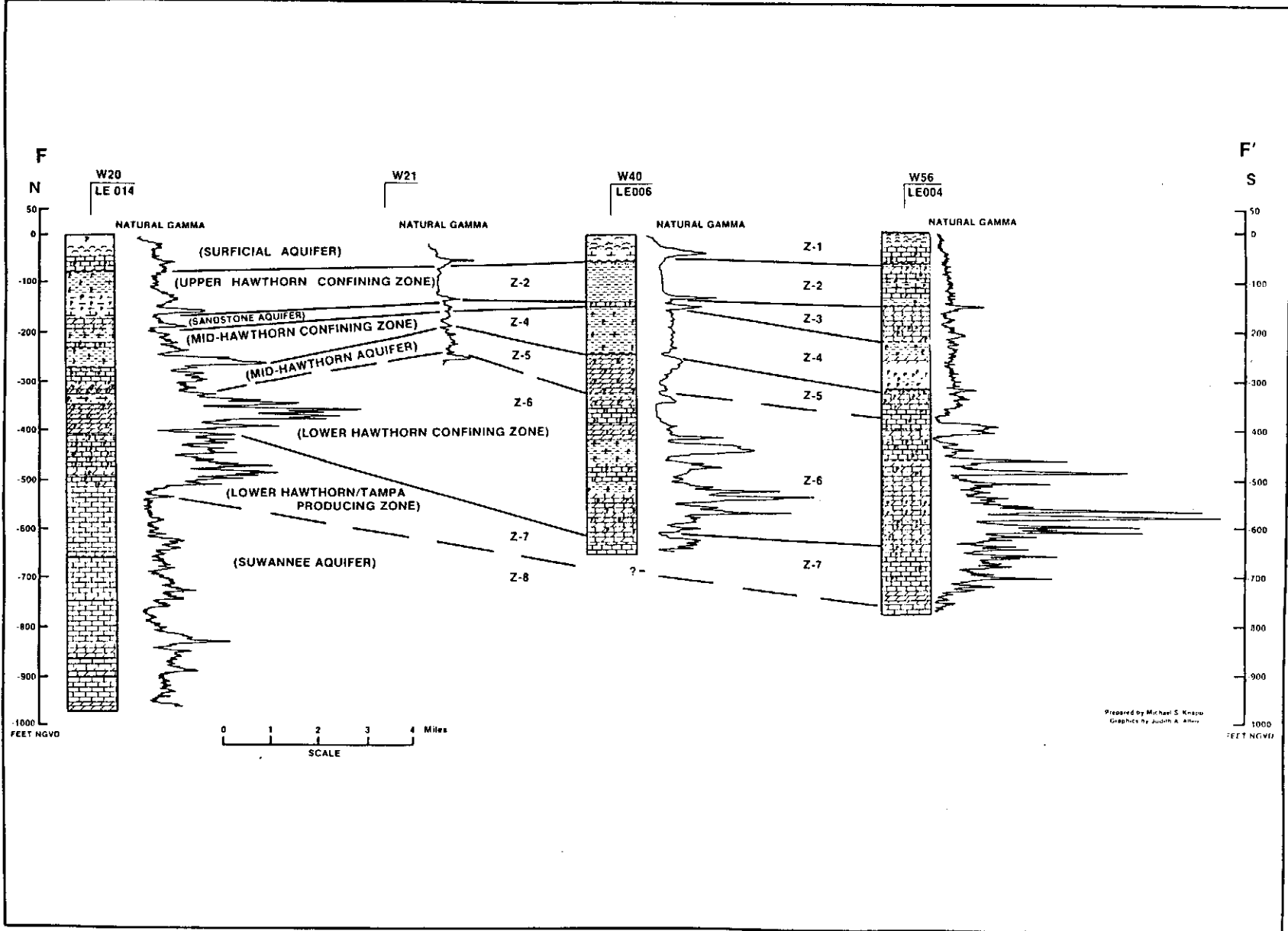


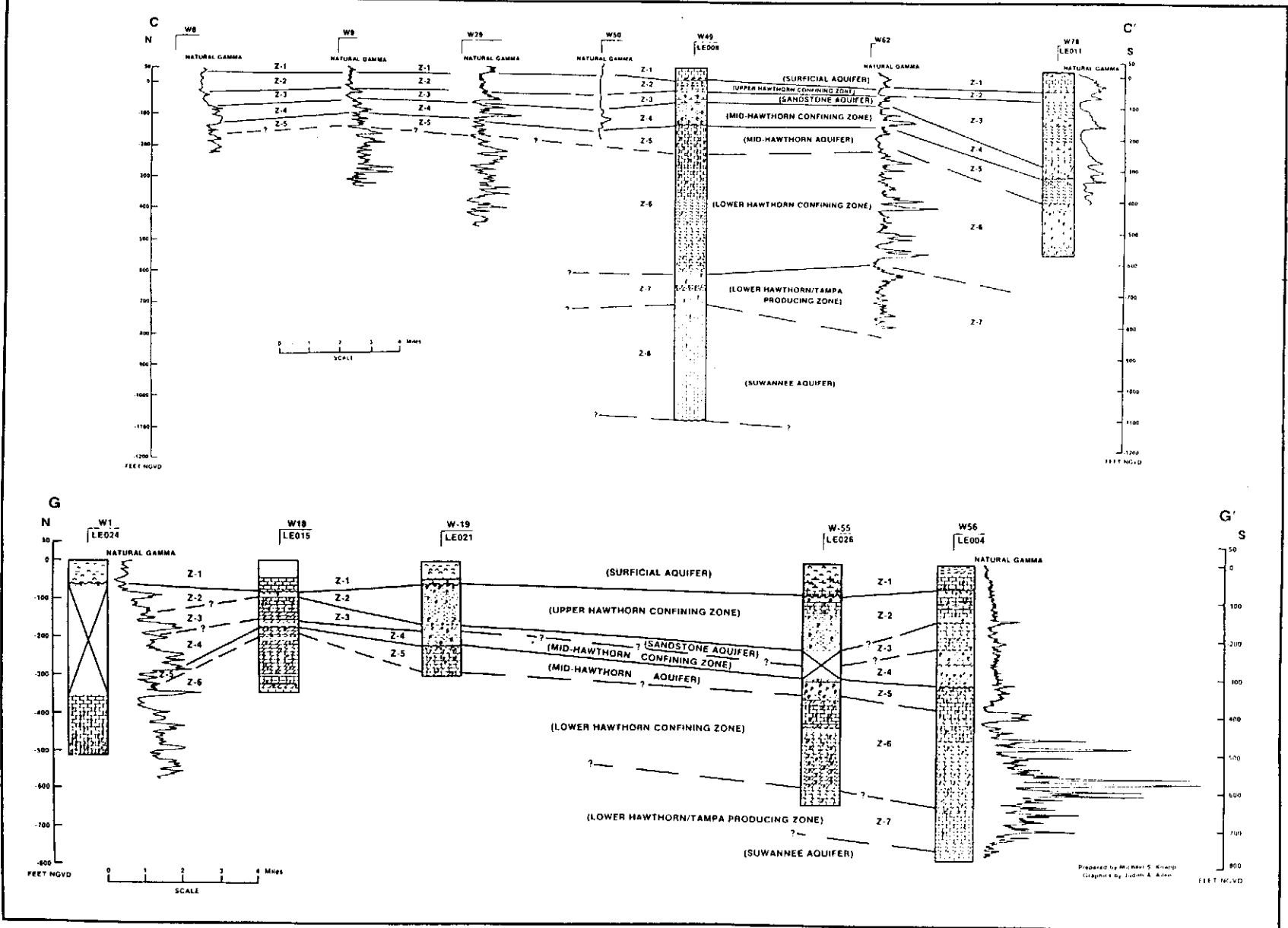


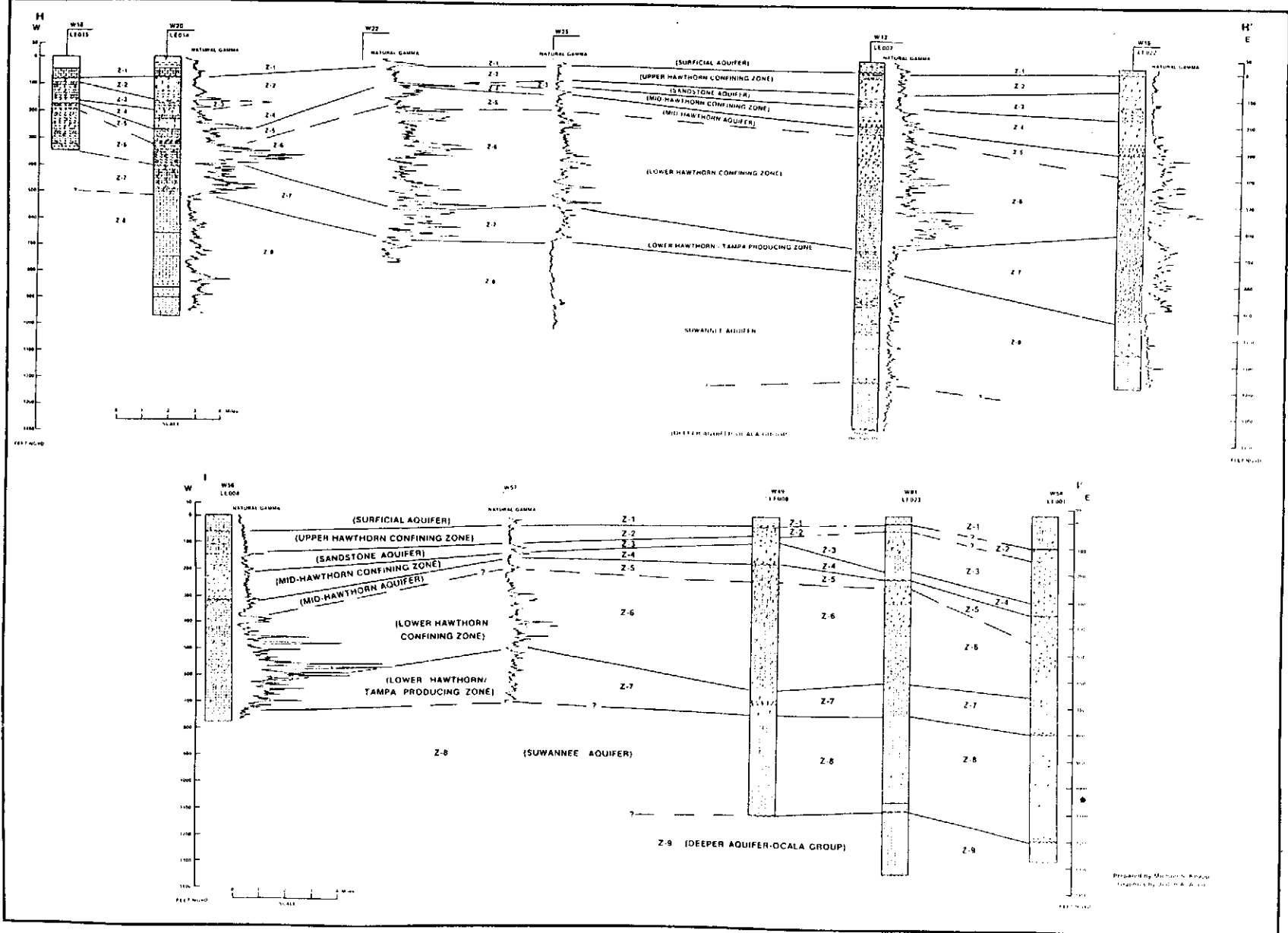


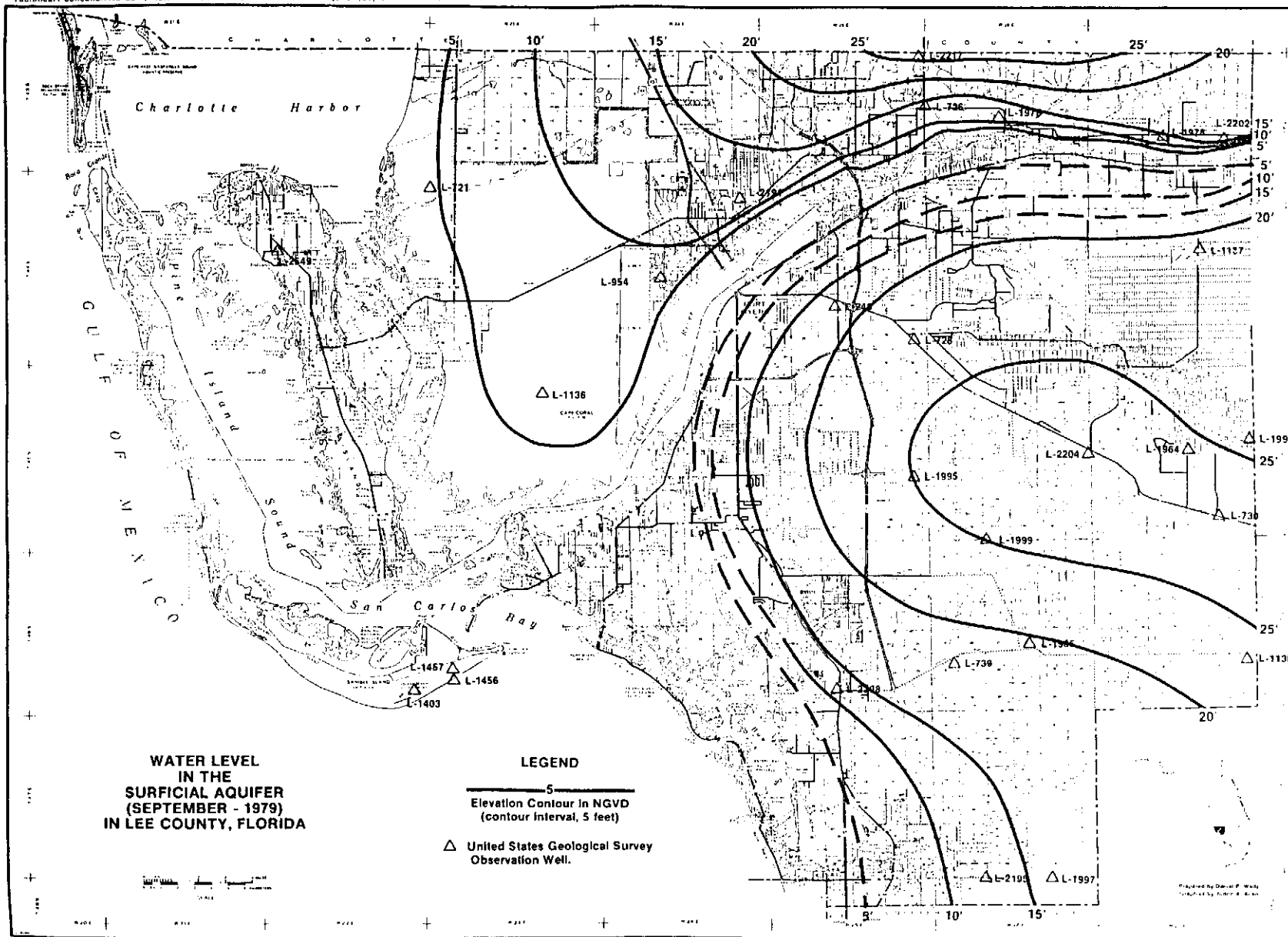


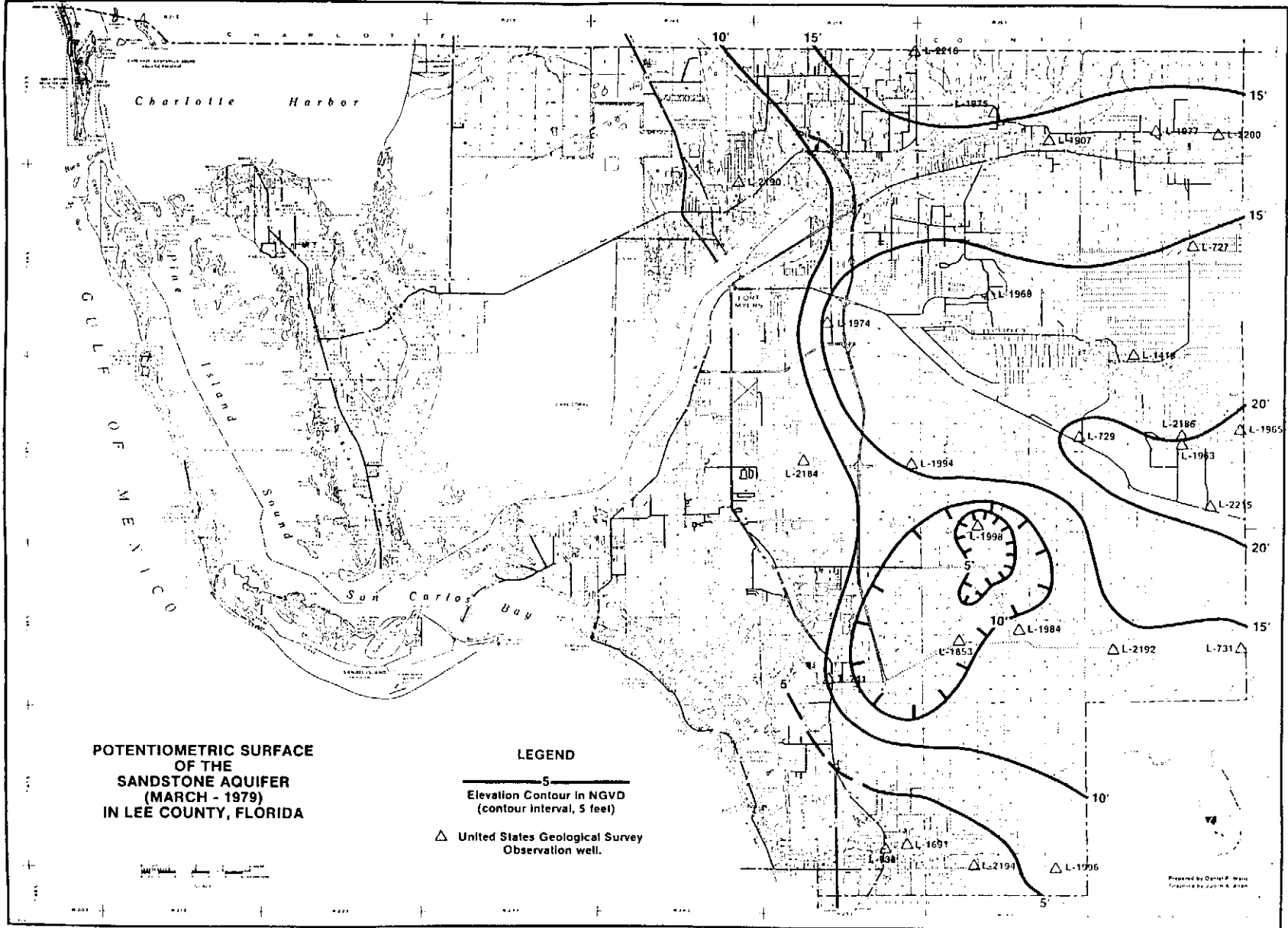


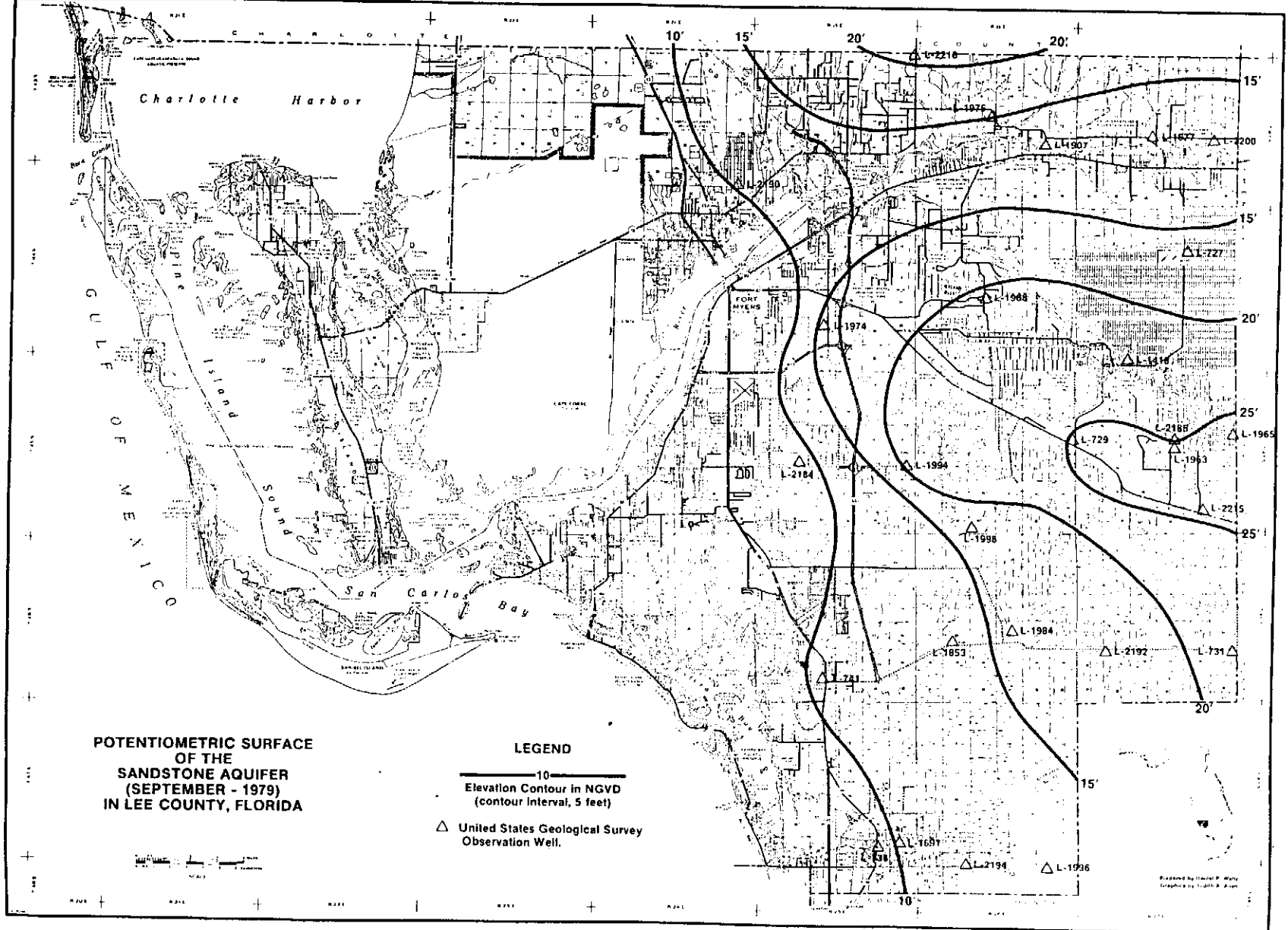


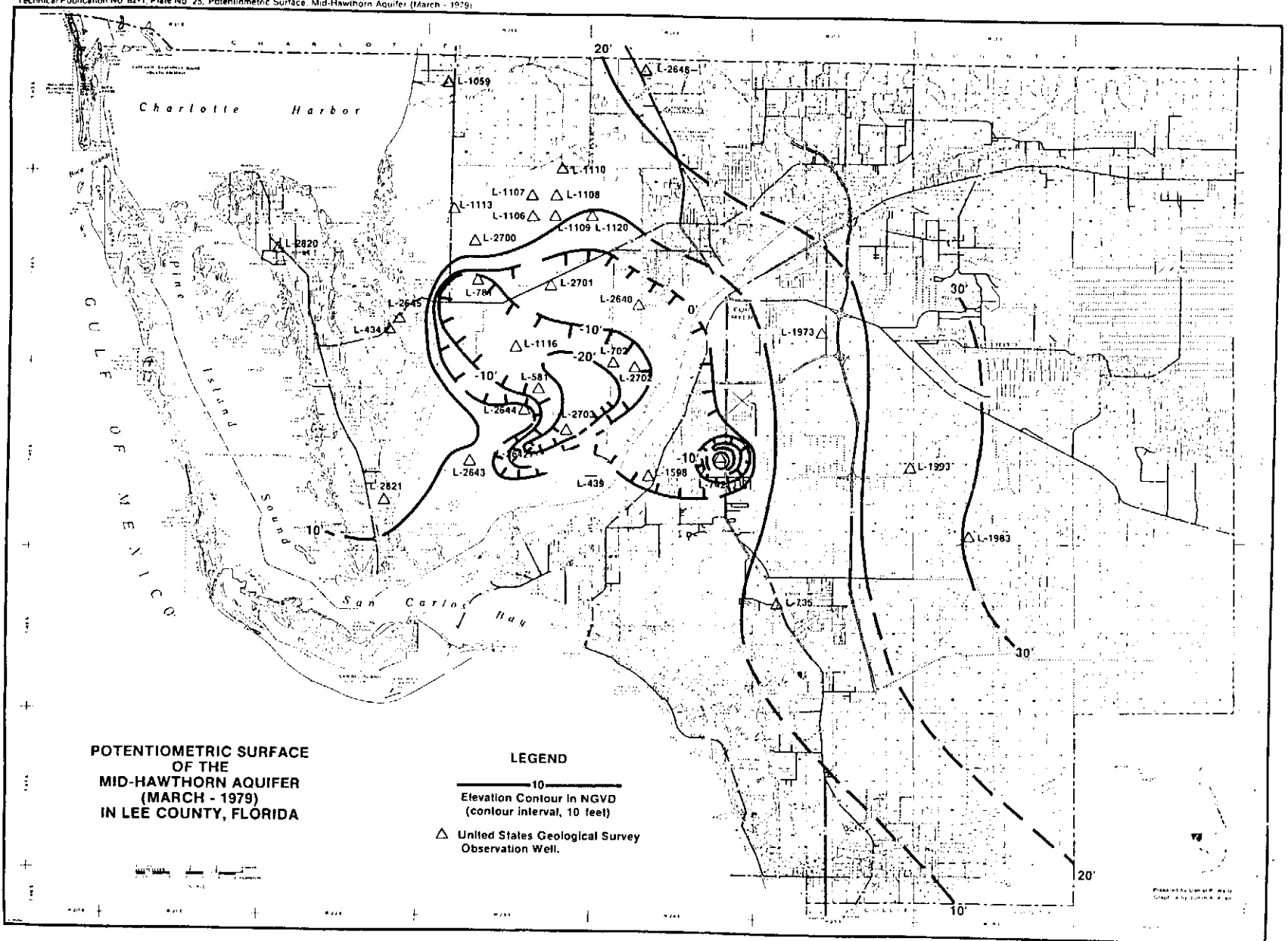












**POTENTIOMETRIC SURFACE
OF THE
MID-HAWTHORN AQUIFER
(MARCH - 1979)
IN LEE COUNTY, FLORIDA**

LEGEND

- 10 —
Elevation Contour in NGVD
(contour interval, 10 feet)
- △ United States Geological Survey
Observation Well.

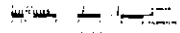
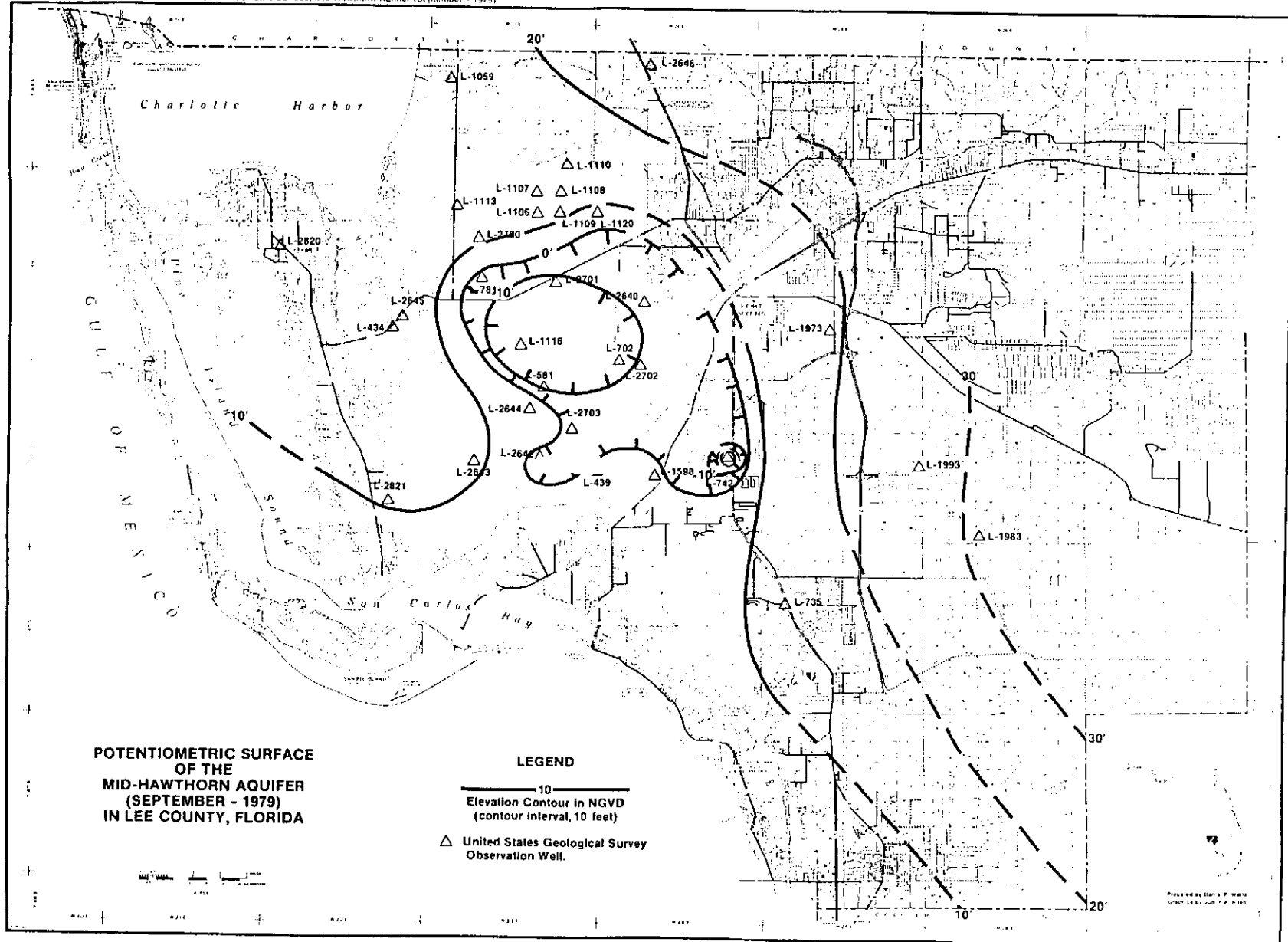


PHOTO COURTESY OF THE
U.S. GEOLOGICAL SURVEY



POTENTIOMETRIC SURFACE
OF THE
MID-HAWTHORN AQUIFER
(SEPTEMBER - 1979)
IN LEE COUNTY, FLORIDA

LEGEND

— 10 —
Elevation Contour in NGVD
(contour interval, 10 feet)

△ United States Geological Survey
Observation Well.

Prepared by Staff of F. Wells
Section, Lee County, Florida

