

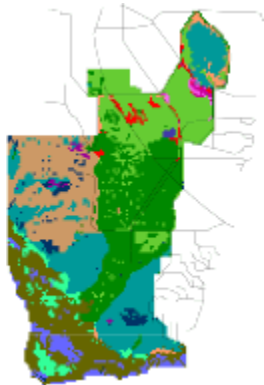
Everglades Project - CERP Mapping

Management Issue:

The SFWMD monitors and models changes in Everglades vegetation distribution and structure in order to determine if water management practices are having an effect on plant communities. The resulting data trends, if any, can act as an indication of the condition and dynamics of the ecosystem.

Project Overview:

1:24,000 scale color infrared aerial photography, flown in June and November, 1995, is being used to create detailed vegetation mapping of the Everglades watershed. State of the art analog and digital mapping methods together with high-resolution optical hardware and sophisticated software applications allow for photo-interpretation, delineation, and simultaneous digitization of plant communities of .25 acres or less in size. A multitiered, hierarchical classification system has been developed in association with Everglades National Park to categorize the plant cover into one of a large number of possible habitat types based on species composition and distribution, size, and position in the landscape.



Project Objective:

Create a comprehensive base line vegetation map in support of the Everglades Landscape Model and other District programs that depend on data describing the location and species characteristics of Everglades vegetation communities.

Application of Results:

Mapping is in progress. Areas completed to date include WCA-2A.