

## APPENDIX D: CROSS-SECTION SURVEYS

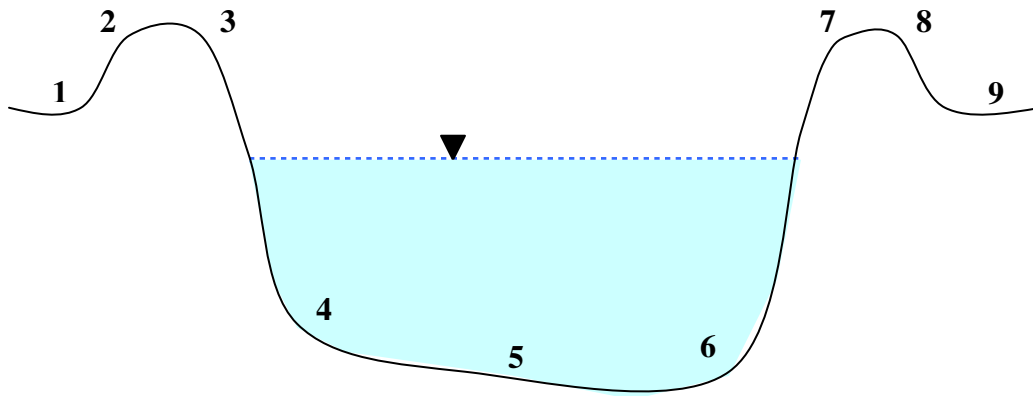
### 1.1 Introduction

As part of work order number CN040912-WO07, ADA Engineering, Inc. (ADA) is under contract with the South Florida Water Management District (SFWMD) to perform a phosphorus water quality and hydrologic analysis of the C-139 Basin. This study required as much as 80 hours of field survey. The field survey was completed by the sub-contractor Superior Consultants, Inc. (SCI).

### 1.2 Survey Specifications

The vertical and horizontal datum for all measurements will be NGVD29 and NAD83, respectively. Where applicable, canal cross sections will include at least nine elevation and location measurements consisting of:

1. Left bank natural ground
2. Left top of bank 1
3. Left top of bank 2
4. Left bottom of bank
5. Center of channel
6. Right bottom of bank
7. Right top of bank 1
8. Right top of bank 2
9. Right natural ground



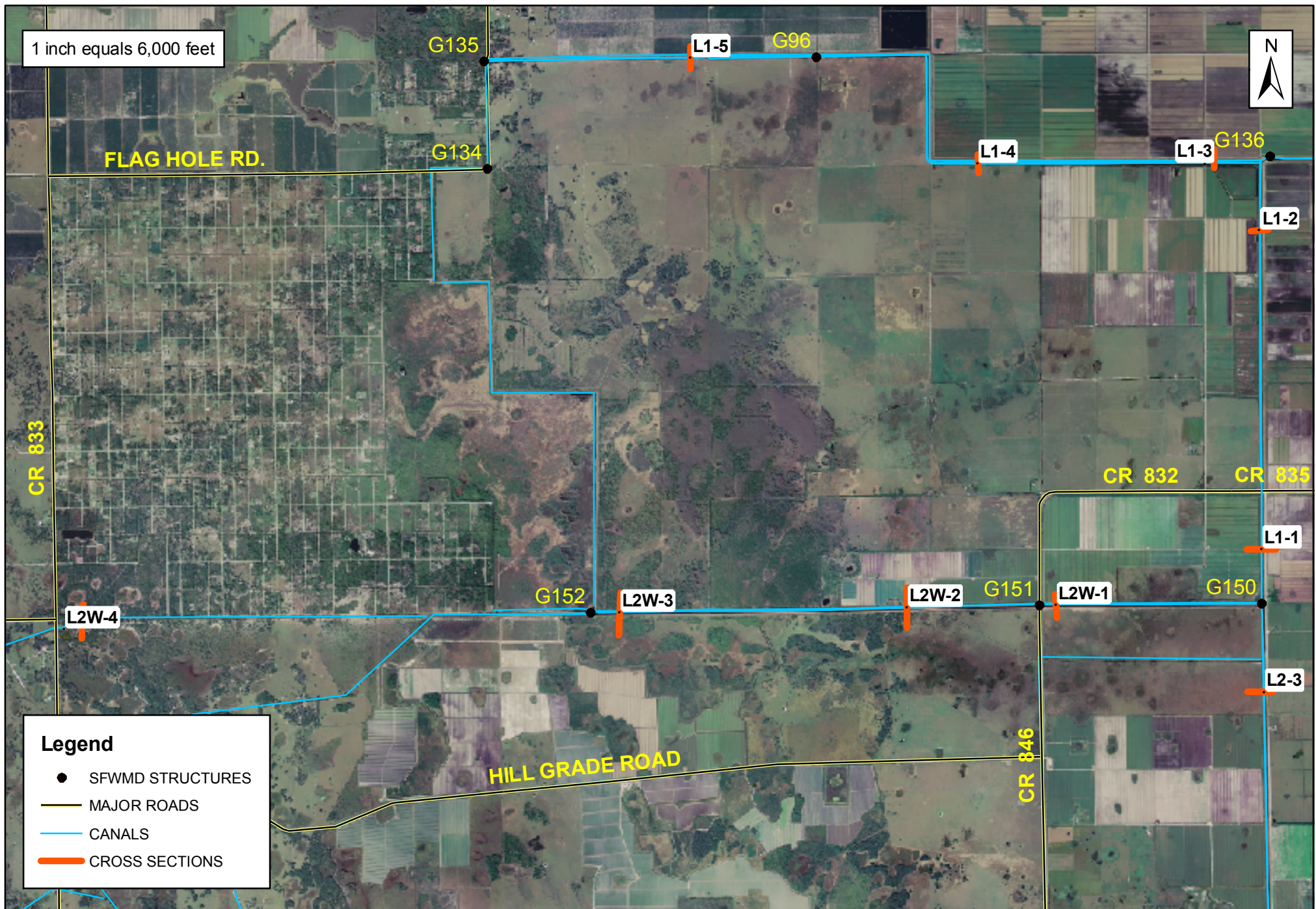
As is standard convention, banks are defined from left to right referenced by looking downstream.

### 1.3 Survey Locations

The canal cross-sections that will be surveyed are described in **Table D-1** below and illustrated in **Figures D-1** and **D-2**.

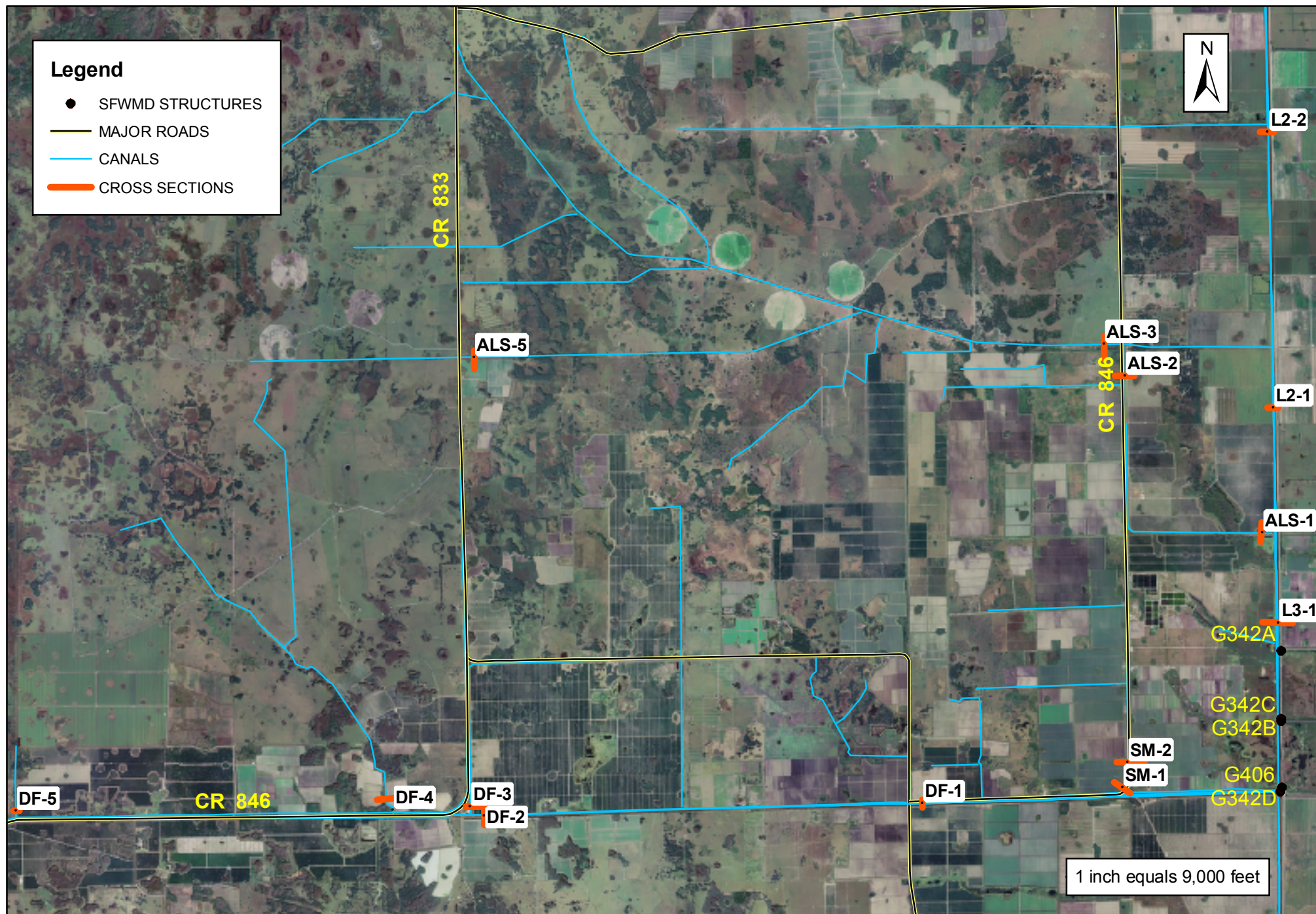
**Table D-1: Location and Description of Cross-Sections (Florida State Plane East)**

NAME	DESCRIPTION	NORTHING	EASTING
ALS-1	EAST OF CR846 WEST OF L-2 CANAL	781782.2	672379.7
ALS-2	PARALLEL TO CR846 ON EAST SIDE	793031.7	662533.1
ALS-3	PERPENDICULAR TO CR846 ON WEST SIDE	795311.2	661028.4
ALS-5	PERPENDICULAR TO CR833 ON EAST SIDE	794357.2	615932.1
DF-1	PARALLEL TO CR846 ON SOUTH	762425.3	648017.1
DF-2	EAST OF CR846 BRIDGE (DUCK CURVE)	761520.0	616664.3
DF-3	BEHIND CONVENIENCE STORE EAST OF CR 846	762211.1	615661.6
DF-4	CANAL PERPENDICULAR TO CR846 ON NORTH	761959.7	610093.7
DF-5	PERPENDICULAR TO CR846 (NORTH) PAST DUCK CURVE	761891.4	583139.6
L1-1	PERPENDICULAR TO CR835 ON SOUTH	829581.8	672424.0
L1-2	PERPENDICULAR TO CR835 ON NORTH	844885.7	672332.8
L1-3	L-1 CANAL NORTH OF CR835	848106.6	669717.0
L1-4	L-1 CANAL	848098.7	658806.3
L1-5	L-1 CANAL EAST OF FLAGHOLE RD	853180.3	645001.7
L2-1	ALONG L-2 CANAL	790738.0	673190.2
L2-2	ALONG L-2 CANAL	810480.9	672780.0
L2-3	ALONG L-2 CANAL	822704.9	672554.4
L2W-1	PERPENDICULAR TO CR846 ON EAST	826876.7	662557.1
L2W-2	PERPENDICULAR TO CR846 ON WEST	826755.8	655386.6
L2W-3	EAST OF G-152 STRUCTURE	826518.8	641598.9
L2W-4	PERPENDICULAR TO CR833 ON EAST SIDE	825719.6	614919.0
L3-1	ALONG L-3 CANAL NORTH OF G-406	775354.4	673554.7
SM-1	CANAL THAT CUTS BEHIND THE CULVERT OUTFALLS	763542.4	662346.4
SM-2	PARALLEL TO CR846 ON WEST SIDE	765370.4	662749.3



**FIGURE D-1: CROSS SECTION LOCATIONS IN THE C-139 BASIN (NORTH HALF)**





**FIGURE D-2: CROSS SECTION LOCATIONS IN THE C-139 BASIN (SOUTH HALF)**