

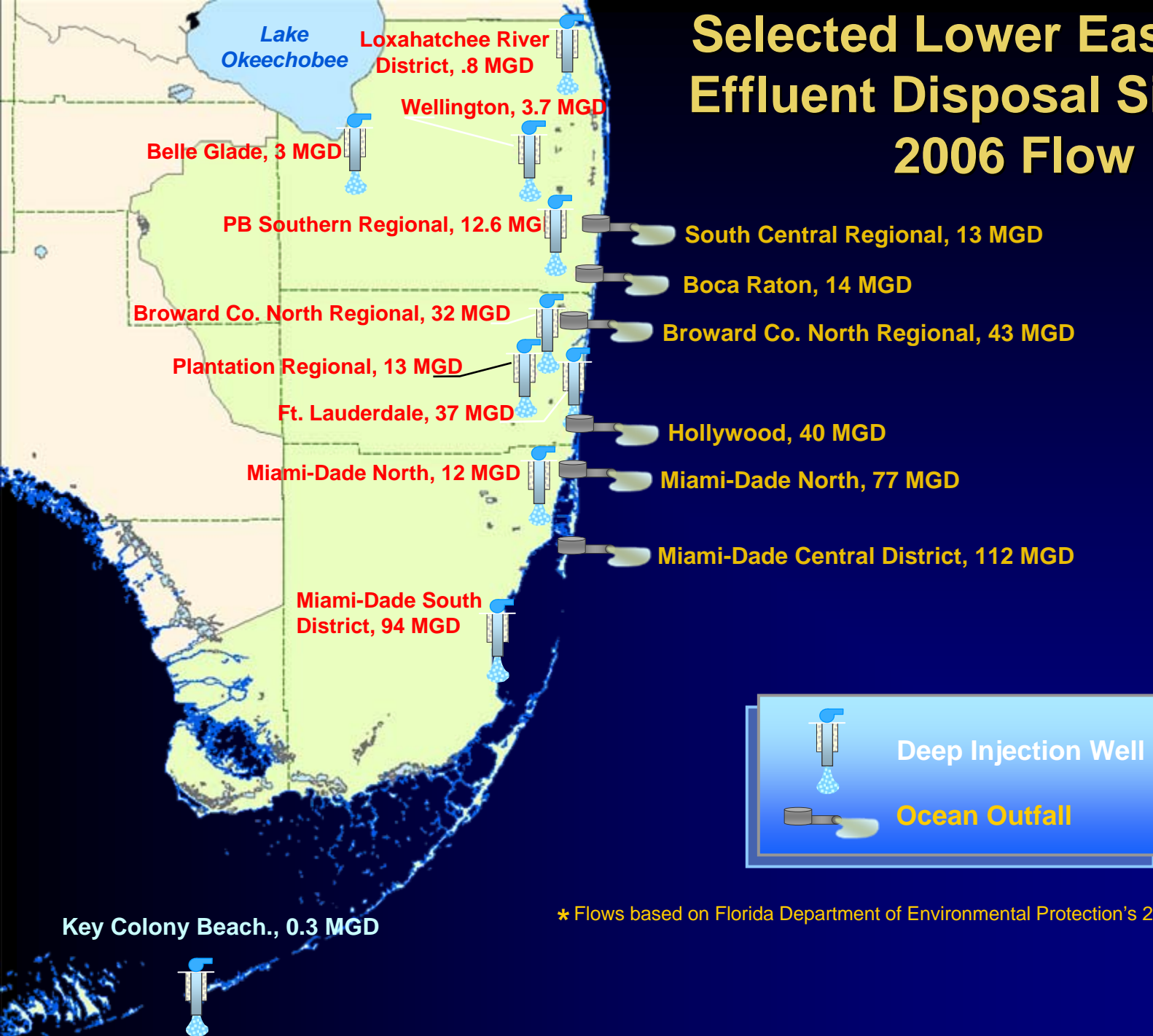


Ocean Outfall Legislation

Senate Bill 1302

DEP

Selected Lower East Coast Effluent Disposal Sites and 2006 Flow



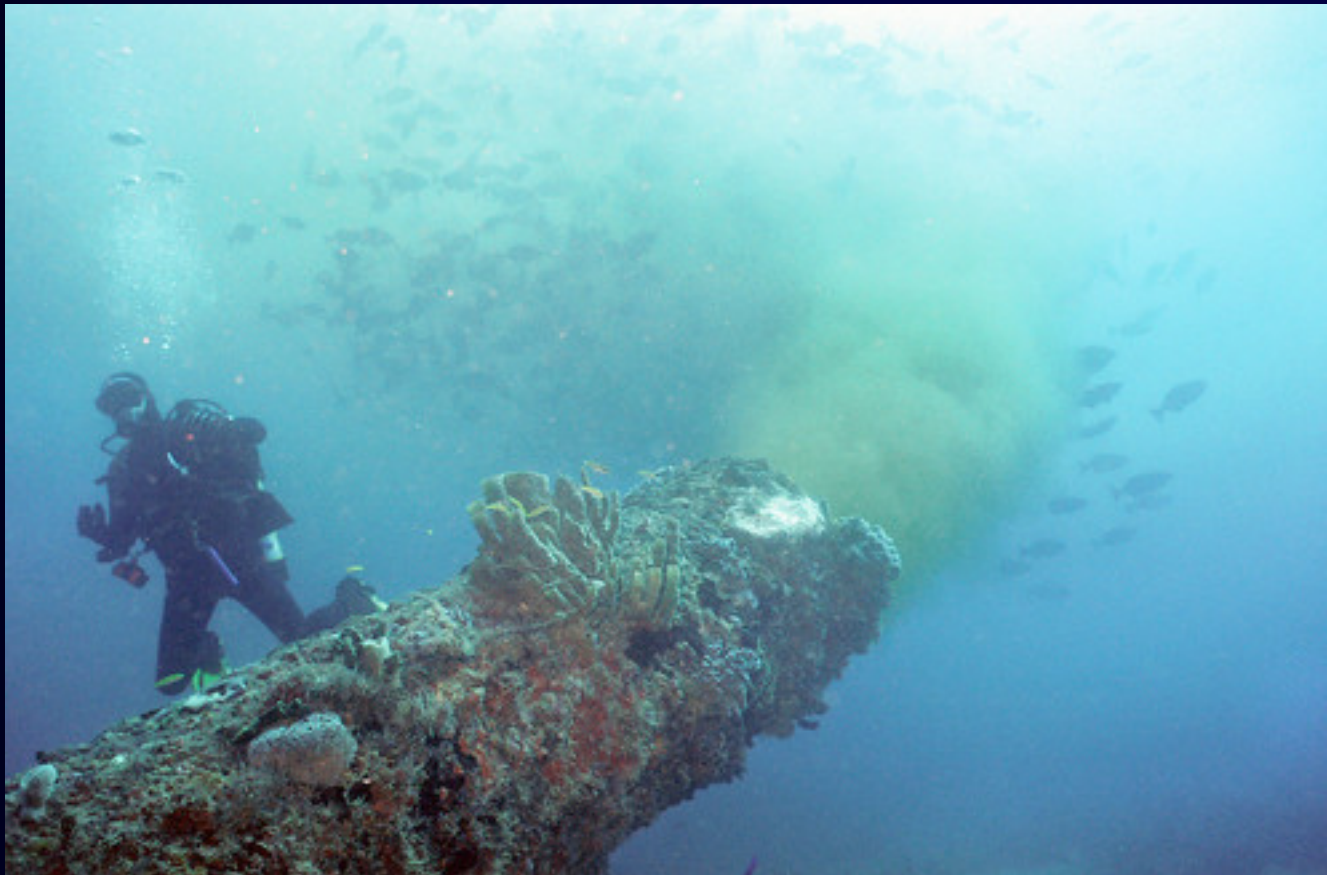
* Flows based on Florida Department of Environmental Protection's 2006 Reuse Inventory



Immediate Actions:

- Prohibits new domestic wastewater discharge ocean outfalls
- Prohibits expansion of existing outfalls and limits the outfalls to their current permitted discharge capacity

The Bill allows maintenance of the existing outfalls and related pumps and pipes.





The Bill includes:

- Wastewater Treatment and Management Requirements
- Minimum Reuse Requirements
- Outfall Wet Weather Discharge Allowances
- Plan & Report Submittals
- Opportunities/incentives for Reuse in the region to Support Outfall Elimination



Wastewater Treatment and Management

- In 10 years (Dec 2018) there will be a dramatic reduction in the amount of pollutants, especially nutrients (nitrogen and phosphorus), discharged to the coastal environment.
- This reduction will occur through either,
 - Significant increase in the level of treatment provided the current wastewater discharges (called advanced waste treatment or **AWT**), or
 - Significant decrease in the volume of wastewater discharged (loading reduction same as **AWT**)
 - 80-90% nutrient load reduction is estimated
 - Provides incentive for early reductions in nutrient discharges

South Central Regional WWTTP





Reuse Requirements

- By 2025 (Dec 2025) use of the outfalls for wastewater disposal will be eliminated
- Requires 60% of outfall facility flows to be reused
 - Provides flexibility in meeting the 60% reuse requirement
 - Flows diverted to other facilities for reuse count toward meeting 60% requirement
 - Utilities operating more than one outfall (Miami-Dade County) are allowed to average reuse flows among the outfall facilities
- Outfalls may only be used after 2025 to discharge wet weather flows from reuse systems during times when reclaimed water cannot be used



Outfall Wet Weather Discharge allowance

Wet weather discharges are allowed from outfalls after December 31, 2025

- Must be a part of a functioning reuse system
- Must meet AWT & management requirements

Pompano Beach Reuse Plant





Reuse Incentives

- Provides priority points under State Revolving Loan Program for projects that eliminate outfalls
- Directs the WMD to give priority in funding assistance to reuse projects that assist in eliminating ocean outfalls
- Directs the WMD to include projects in their regional water supply plans that support elimination of ocean outfalls
- Authorizes the WMDs to make reclaimed water produced by the ocean outfall facilities a preferred alternative water supply when evaluating CUPs.



Required Submittals:

- Initial plan is due 7/1/13, with an update due 7/1/16
- Summary report is due to the DEP Secretary by 12/31/09 and by 12/31 every five years thereafter
- Progress Report from DEP to the Governor, the Senate President and the Speaker of the HR no later than 7/1/10



Other Provisions

Bill titled “Leah Schad Memorial Ocean Outfall Program”

Establishes a funding mechanism (should funding become available in future) and a dedicated account w/in the Ecosystem Management and Restoration Trust Fund – Pollution Control Financial Assistance to assist in implementation.



Questions ?