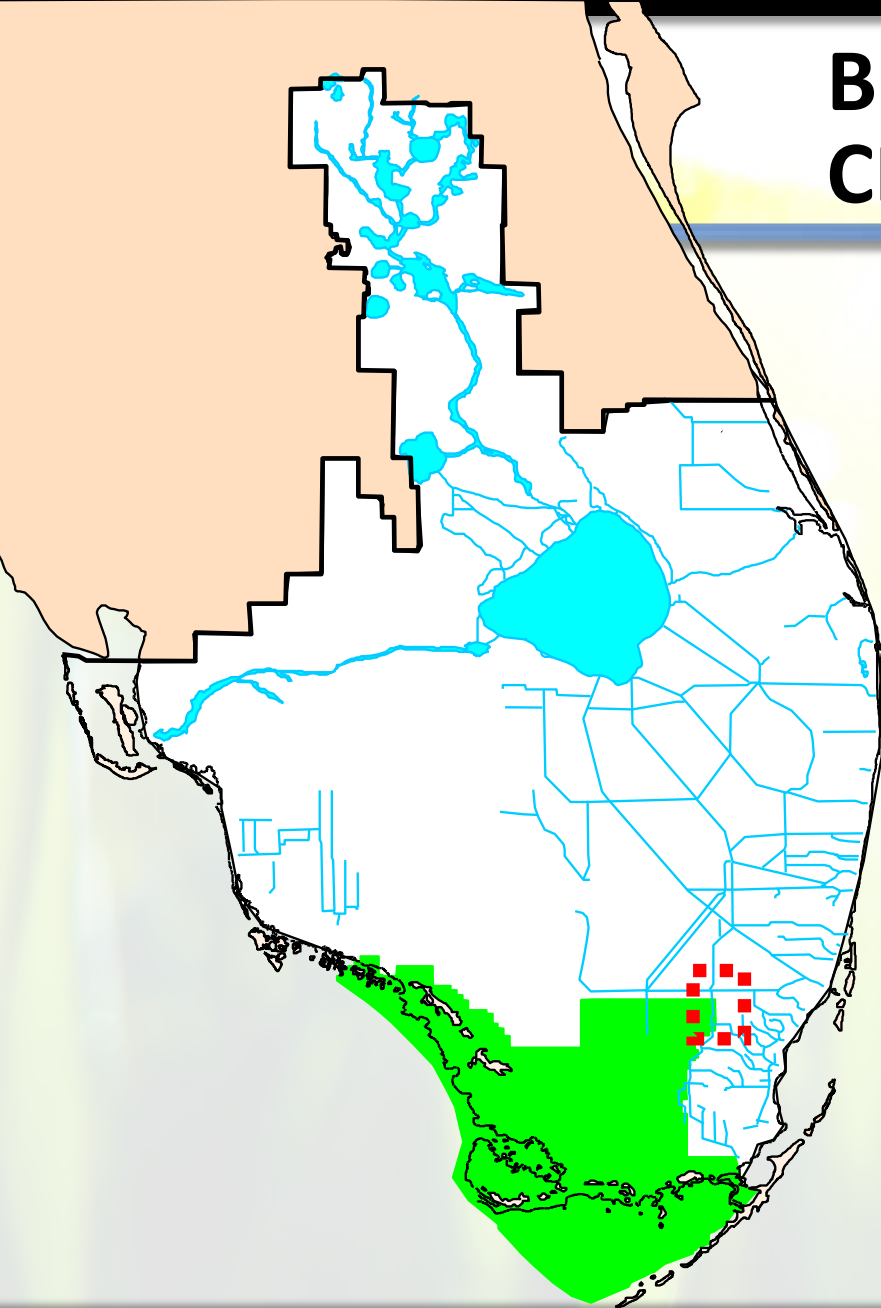


Bird Road Drive Recharge Project and Lands Update

South Miami-Dade Water Issues Coordination Roundtable Discussion – March 1, 2011

*Matthew J. Morrison, Director, Project Coordination Division
Everglades Restoration and Capital Projects*

Bird Drive Component of CERP



- Background
- Current Status
- Potential Land Surplus



Pennsuco

**C-4
Detention**

Tamiami Trail

**Bird Drive
Recharge
Area**

**Everglades
National Park**

**M-D West
Well Field**

Yellow Book Purpose for Bird Drive

- Reduce seepage from Everglades National Park
- Recharge groundwater east of Krome Avenue
- C-4 peak flood attenuation
- Water supply deliveries to South Dade Conveyance System (SDCS)
- Increase spatial extent of wetlands

Yellow Book Concept for Bird Drive

- Bird Drive Recharge Component (U)
- Above-ground impounded recharge area
 - 2,877 acres
 - 11,500 ac-ft of storage
- Pumps and water control structures
 - Deliveries to SDCS
- WWTP flows
 - 155 cfs to recharge well field

Plan Formulation

- Project Concept Deficiencies
 - Modeling and detailed physical analysis
 - Highly transmissive project site
 - Unable to hold water on project site for delivery to SDCS
 - Likely to cause flooding impacts of urban areas east of project site
 - Design and operation “not feasible”

Plan Formulation (Cont.)

- Diminished project benefits and cost-effectiveness
 - Seepage management no longer a primary benefit due to proposed L-30 and L-31N seepage barriers
 - Recharge of groundwater requires relatively small area (40 - 400 acres) and cannot be near the wellfield
 - Flood attenuation benefits diminished due to C-4 Emergency Detention Basin
 - Water supply deliveries to SDCS can be made by other delivery routes
 - Lands costs four times Restudy estimate at \$280 million

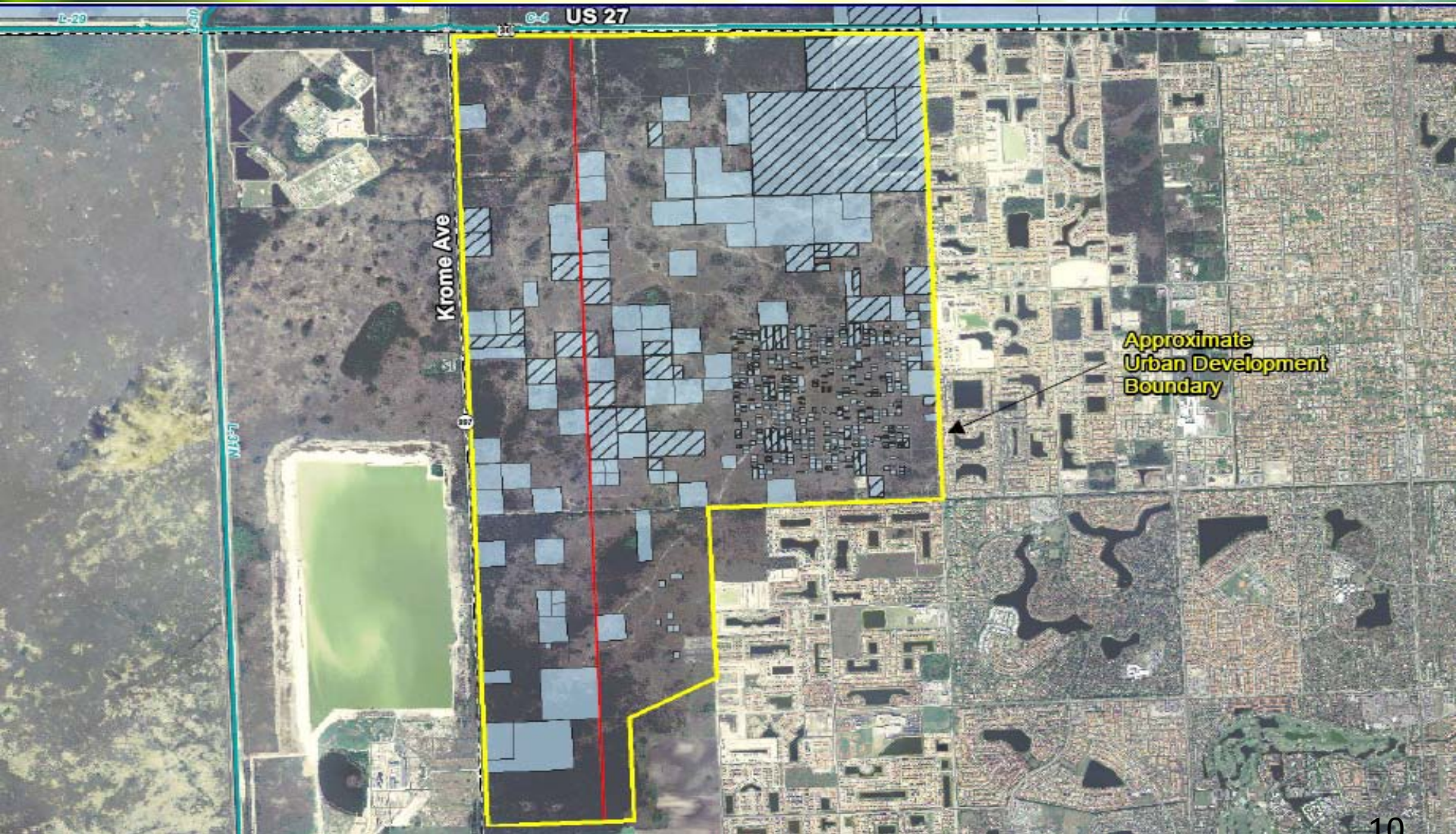
Plan Formulation (Cont.)

- Project Delivery Team prepared white paper (June 2008)
 - Evaluated conditions affecting project benefits and cost
 - Design and operation are not feasible
 - Concept as envisioned in Yellow book is “not implementable”
 - Bird Drive Recharge Area screened out due to high cost/low benefit ratio
- Joint Project Review Board - Corps consensus that surplus proposal consistent with PDT recommendation (Jan 2011)

Potential Land Surplus

- Project Footprint
 - 2877 acres required
 - 1398 acres acquired
- Potential Surplus Area
 - 1058 acres (eastern 1 ½ miles)
- Lands Retained
 - 340 acres (western ½ mile)
 - potential future use

Potential Land Surplus (Cont.)



Potential Land Surplus (Cont.)

- Public Process
 - WRAC Sub-Committee
 - WRAC
 - Projects and Lands Committee
 - Governing Board
- Request
 - Authorization to convey written request to Corps for acquiescence regarding land surplus
 - Authorization to convey written request to TIITF to transfer state dollars expended to Biscayne Bay Coastal Wetlands tracts



Questions?