

### SFWMD ASR Database Summary Page - Utility ASR Facilities in the SFWMD

County	Project Site	Owner	Status	Source water	Number of ASR Wells	Comments
Broward	Fiveash WTP	Fort Lauderdale	inactive since August 2004	potable	1	
	Broward 2A	BCOES	inactive	raw groundwater	1	permit compliance issues
	Sunrise WTP	Sunrise	post-operational testing	potable	1	
Collier	Manatee Road	Collier Co.	operational	potable	1	
	Marco Lakes	Florida Water	operational-testing		3	
Lee	Corkscrew	LCRWSA	operational	potable	5	
	North Reservoir	Lee Co.	operational-testing	potable	1	
	Olga	Lee Co.	operational-testing	potable	1	
	Regional WTP	USGS	inactive		1	
	San Carlos Estates	Bonita Springs	operational-testing	potable	1	
	Winkler Avenue	Fort Myers	operational-testing	potable	1	
Miami-Dade	Southwest Wellfield	MDWSD	inactive	raw groundwater	2	permit compliance issues
	West Wellfield	MDWSD	operational testing	raw groundwater	3	
Palm Beach	Boynton Beach	Boynton Beach	operational	potable	1	oldest in SFWMD
	Delray Beach	Delray Beach	inactive	potable	1	pump problems from sand
	PBCWUD - Hillsboro	PBCWUD	operational testing	raw groundwater	1	
	PBCWUD SROC (System 3)	PBCWUD	inactive	raw groundwater	1	pending operational testing
	West Palm Beach	West Palm Beach	inactive		1	cycle testing data not available
Monroe	Marathon	FCAA	inactive	potable	1	salt water in aquifer

Note #1. This database includes information on ASR systems that have been constructed and undergone some amount of operational testing.

Note #2. The database does not include information on experimental/test wells or wells that have been constructed but not operationally tested.

**SFWMD ASR Database Summary Page - ASR Projects in Florida**

County	Project Site	Owner	Status	Year Began Operation	Source water	Number of ASR Wells	Comments
Brevard	Cocoa	City of Cocoa	operational	1987	treated groundwater and surface water	6	
	Port Malabar	Palm Bay	operational	1989		1	
Broward	Broward 2A	BCOES	inactive	1998	raw groundwater	1	
	Deerfield Beach	Fort Lauderdale	inactive		potable	1	
	Fiveash WTP	Fort Lauderdale	operational		potable	1	
	Sunrise Springtree WTP	Sunrise	operational testing	1999	potable	1	
Charlotte	Punta Gorda - Shell Creek	Punta Gorda		1998	potable	4	
	Englewood South Regional	Englewood Water District	operational testing		reclaimed	1	
Collier	Manatee Road	Collier County	operational	1991		1	
	Marco Lakes	Florida Water Services	operational	1997	treated surface water	4	
DeSoto	Peace River - Manasota	Manasota Regional WSA	operational	1985	treated surface water	9	
Hillsboro	Northwest Hillsboro	Hillsboro County	operational testing		reclaimed	1	
	Central Hillsboro	Hillsboro County	planned			0	
	South Hillsboro	Hillsboro County	planned			0	
	Tampa	City of Tampa	operational	1985	potable	8	
Lee	Lee County Regional WTP	USGS	experimental		treated surface water	1	
	Corkscrew	LCRWSA	operational	1995	potable	5	
	North Reservoir	Lee Co.	operational testing	2000	potable	1	
	Olga	Lee Co.	operational testing	2001	potable	1	
	Winkler Ave.	Fort Myers	operational testing	2000	potable	1	
	San Carlos Estates	Bonita Springs	operational testing	1999	potable	1	
Manatee	Manatee County - North	Manatee County			reclaimed	1	
	City of Bradenton	City of Bradenton	planned		potable		
	Manatee County - Southwest	Manatee County		1983	groundwater and surface water	2	
	City of Palmetto	City of Palmetto	planned				
Miami-Dade	Hialeah	USGS	experimental	1975		1	
	Miami Beach	Bay Shore Golf Course	experimental			1	
	Southwest Wellfield	MDWASD	constructed		untreated groundwater	2	
	West Wellfield	MDWASD	inactive	1999	untreated groundwater	3	
Monroe	Marathon	FCAA	inactive	1990	potable	1	
Okeechobee	SFWMD Taylor Creek	SFWMD	experimental	1989	treated surface water	1	
Palm Beach	PBCWUD System 3	PBCWUD	constructed		potable	1	may be a blending well
	PBCWUD Eastern Hillsboro	PBCWUD	operational testing	2004	untreated groundwater	1	
	Boynton Beach	Boynton Beach	operational	1992	potable	1	
	Delray Beach	Delray Beach	inactive	2000	potable	1	
	Jupiter	USGS	experimental	1975	treated surface water	1	
	SFWMD Western Hillsboro Canal	SFWMD	CERP pilot		treated surface water	1	
	West Palm Beach	West Palm Beach	inactive	1997	treated surface water	1	
Pasco	Tarpon Springs		planned			0	
Pinellas	City of St. Petersburg		constructed		reclaimed	1	
	Clearwater		planned		reclaimed	0	
	Lake Tarpon		planned			0	
	Largo		planned			0	
	Oldsmar		planned			0	
	South Pinellas County		planned			0	
Sarasota	North Sarasota County		planned			0	
	North Port		planned			0	
	City of Sarasota		planned			0	
St. Lucie	SFWMD St. Lucie County	SFWMD	experimental			1	

**City of Fort Lauderdale - Fiveash WTP**

Construction Complete: 1998  
Started Operation: 1999  
Source Water: raw groundwater  
Operator:  
Status: some cycle testing performed, but currently inactive

**ASR Well Data**

Number of ASR wells: 1  
Casing diameter (inches): 16  
Casing depth (feet bls): 1,055  
Casing material: steel  
Total well depth (feet bls): 1,300  
Completion style: open hole  
Well capacity (mgd): 2  
Average pumping rate (mgd): 1.3-1.8

**Monitor Well Data**

Number of monitor wells: 1  
Casing depth (feet bls): 1,055  
Casing material: steel  
Monitor zone interval: 1,055-1,175  
Total depth (feet bls):  
Distance from ASR well (feet): 350

**Hydrogeologic Data**

Aquifer: Floridan  
Transmissivity (gpd/ft): 146,000  
Ambient chloride (mg/L): 4,000  
Ambient TDS (mg/L): 7,900

**Testing Data**

Cycle #	recharge / storage / recovery (days)	recharge volume (mg)	recovery volume (mg)
1	11/0/1	19	1
2	40/0/2	75	4.7
3	112/443/0	224	0
4	30/0/75	56	34

**Broward Co. - WTP 2A**

Construction Completed: 1998  
Started Operation: 1999  
Source Water: raw groundwater  
Operator: BCOES  
Status: some cycle testing performed - but currently inactive

**ASR Well Data**

Number of ASR wells: 1  
Casing diameter (inches): 16  
Casing depth (feet bls): 995  
Casing material: steel  
Total well depth (feet bls): 1,200  
Completion style: open hole  
Well capacity (mgd): 3  
Average pumping rate (gpm): 2.5 - 3.5

**Monitor Well Data**

Number of monitor wells: 1  
Casing depth (feet bls): 990  
Casing material:  
Monitor zone interval:  
Total depth: 1,200  
Distance from ASR well (feet): 275

**Hydrogeologic Data**

Aquifer: Floridan  
Transmissivity (gpd/ft): 275,000  
Ambient chloride (mg/L): 1,900  
Ambient TDS (mg/L): 3,200

**Testing Data**

Cycle #	recharge / storage / recovery (days)	recharge volume (mg)	recovery volume (mg)
1	10/0/1	22	1.5

## Sunrise Springtree

Started Operation: 1999  
Operator: City of Sunrise  
Source Water: potable  
Status: cycle testing completed, but currently inactive

### ASR Well Data

Number of ASR wells: 1  
Casing diameter (inches): 16  
Casing depth (feet bls): 1,016  
Casing material: steel  
Total well depth (feet bls): 1,200  
Completion style: open hole  
Well capacity (mgd): 1  
Average pumping rate (gpm):

### Monitor Well Data

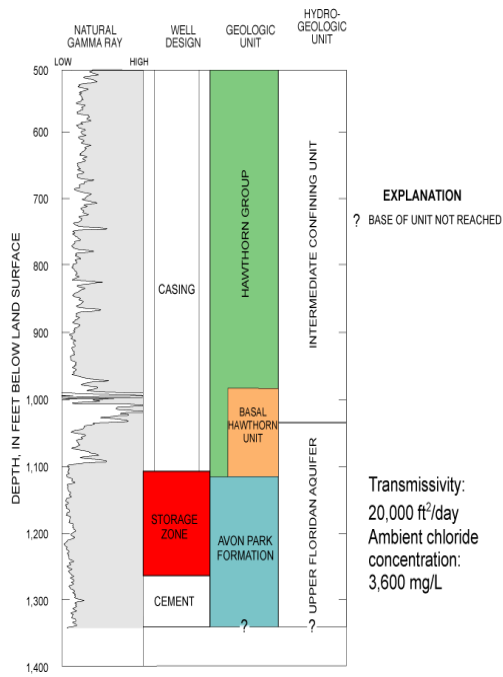
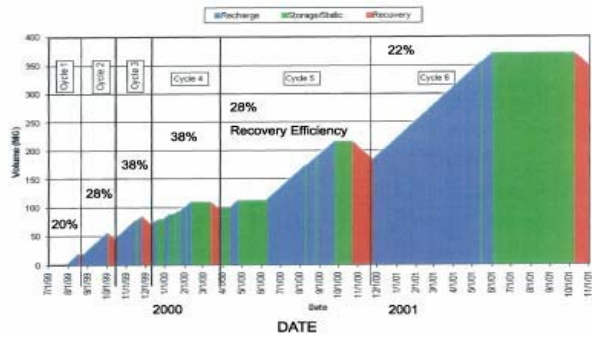
Number of monitor wells: 0  
Casing diameter (inches):  
Casing depth (feet bls):  
Casing material:  
Monitor zone interval:  
Total depth (feet bls):  
Distance from ASR well (feet):

### Hydrogeologic Data

Aquifer: Floridan  
Transmissivity (gpd/ft): 43,000  
Ambient chloride (mg/L): 2,450  
TDS (mg/L): 4,500

### Testing Data

Cycle #	recharge / storage / recovery (days)	recharge volume (mg)	recovery volume (mg)
1	19/0/3	20	4
2	39/2/10	40	11
3	39/0/14	41	15
4	62/29/14	40	15
5	107/29/31	103	32
6	188/130/130	187	23



## Collier County - Manatee Road

Construction Completed: 1990  
Started Operation: 1991  
Source Water: potable  
Operator: Collier County  
Status: operating

### ASR Well Data

Number of ASR wells: 1  
Casing diameter (inches):  
Casing depth (feet bls): 465  
Casing material: steel  
Total well depth (feet bls): 528  
Completion style: open hole  
Well capacity (mgd):  
Average pumping rate (gpm):

### Monitor Well Data

Number of monitor wells: 3  
Casing depth (feet bls):  
Casing material  
Monitor zone interval: 360-500 and 650-770  
Total Depth (feet bls):  
Distance from ASR well (feet):

### Hydrogeologic Data

Aquifer: Mid-Hawthorn  
Transmissivity (gpd/ft):  
Ambient chloride (mg/L): 2,754  
Ambient TDS (mg/L): 5,032

### Testing Data

Cycle #	recharge / storage / recovery (days)	recharge volume (mg)	recovery volume (mg)
1	14/6/2	7	0.3
2	46/19/6	30	2.6
3	20/20/6	10	3
4	20/20/8	10	4



## Collier County - Marco Lakes

Construction Completed: 1997  
Started Operation: 1997  
Source Water: treated surface water  
Operator: Florida Water Services  
Status: operational testing

### **ASR Well Data**

Number of ASR wells: 3  
Casing diameter (inches):  
Casing depth (feet bls): 735  
Casing material:  
Total well depth (feet bls): 790  
Completion style: open hole  
Well capacity (mgd):  
Specific capacity (gpm/ft):  
Average pumping rate (gpm):

### **Monitor Well Data**

Number of monitor wells: 2  
Casing depth (feet bls):  
Casing material:  
Monitor zone interval:  
Total depth (feet bls):  
Distance from ASR well (feet):

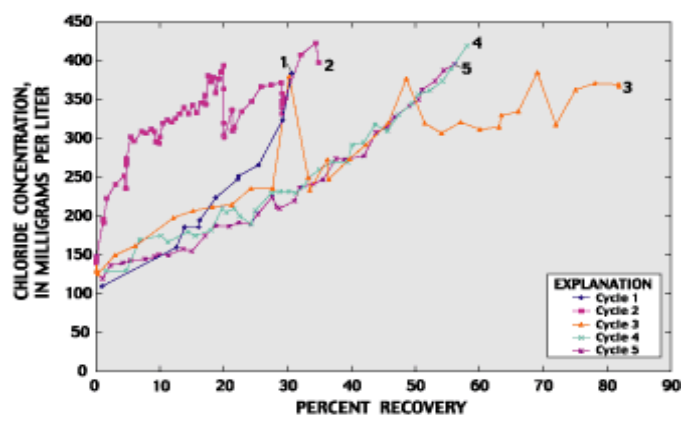
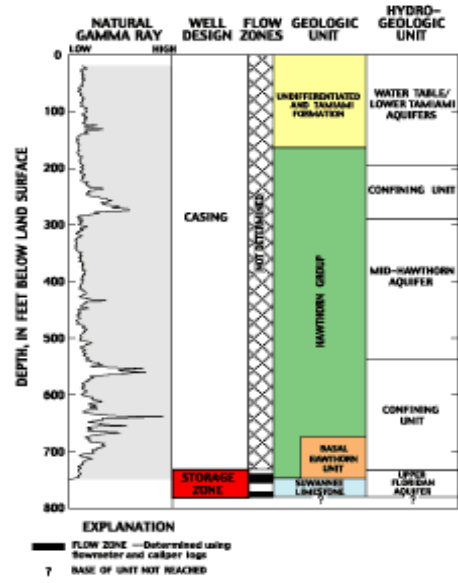
### **Hydrogeologic Data**

Aquifer: Hawthorn/Suwannee  
Transmissivity (gpd/ft): 68,000  
Ambient chloride (mg/L): 2,600  
Ambient TDS (mg/L): 6,200

### **Testing Data**

Cycle #	recharge / storage / recovery (days)	recharge volume (mg)	recovery volume (mg)
1	39/3/12	20	6
2	88/63/37	87	26
3	26/2/27	21	15
4	134/83/68	110	55
5	140/102/77	132	67





## Lee County - Corkscrew WTP

Construction Complete: 1995  
Started Operation: 1995  
Operator: Lee County Regional Water Supply Authority  
Source Water: potable  
Status: operating

### ASR Well Data

Number of ASR wells: 5  
Casing diameter (inches):  
Casing depth (feet bls): 328  
Casing material:  
Total well depth (feet bls): 397  
Completion style: open hole  
Well capacity (mgd):  
Specific capacity (gpm/ft):  
Average pumping rate (gpm):

### Monitor Well Data

Number of monitor wells: 5  
Casing diameter (inches):  
Casing depth (feet bls):  
Casing material:  
Monitor zone interval:  
Total depth (feet bls):  
Distance from ASR well (feet):

### Hydrogeologic Data

Aquifer: Mid-Hawthorn  
Transmissivity (gpd/ft):  
Ambient chloride (mg/L): 39  
Ambient TDS (mg/L) 336

### Testing Data

Cycle #	recharge / storage / recovery (days)	recharge volume (mg)	recovery volume (mg)
1	7/1/2012	2	2.9
2	76/35/122	31	23
3	63/31/34	26	20

## Lee County - North Reservoir

Construction Completed: 1999  
Started Operation: 2000  
Source Water: potable  
Operator: Lee County  
Status: operational testing

### ASR Well Data

Number of ASR wells: 1  
Casing diameter (inches):  
Casing depth (feet bls): 540  
Casing material:  
Total well depth (feet bls): 642  
Completion style: open hole  
Well capacity (mgd):  
Average pumping rate (gpm):

### Monitor Well Data

Number of monitor wells: 1  
Casing diameter (inches): 6  
Casing depth (feet bls):  
Casing material: pvc  
Monitor zone interval:  
Total depth (feet bls):  
Distance from ASR well (feet):

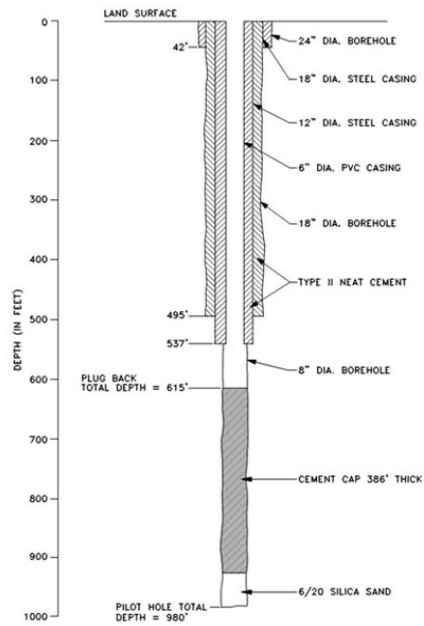
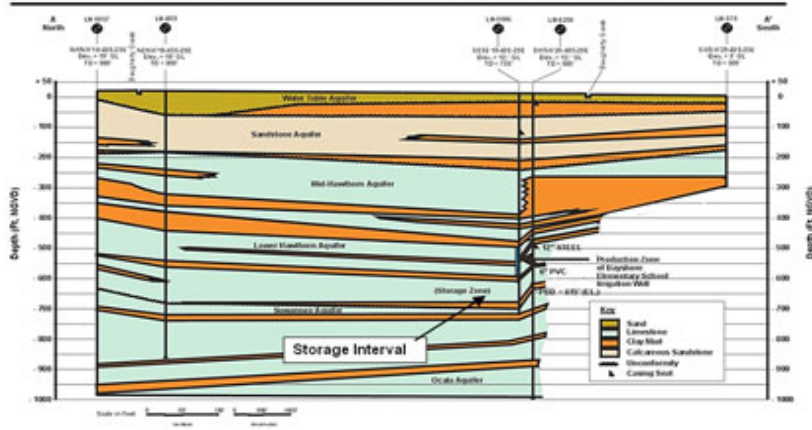
### Hydrogeologic Data

Aquifer: Floridan  
Transmissivity (gpd/ft):  
Ambient chloride (mg/L): 740  
Ambient TDS (mg/L)

### Testing Data

Cycle #	recharge / storage / recovery (days)	recharge volume (mg)	recovery volume (mg)
1	14/7/1	6	0.6
2	125/168/15	60	7
3	209/50/103	127	24

# North Reservoir Area, Lee County, Florida



## Lee County - Olga WTP

Construction Complete: 1999  
Started Operation: 2001  
Source Water: potable  
Operator: Lee County  
Status:

### ASR Well Data

Number of ASR wells: 1  
Casing diameter (inches):  
Casing depth (feet bls): 859  
Casing material:  
Total well depth (feet bls): 920  
Completion style: open hole  
Well capacity (mgd): 0.5  
Average Pumping Rate:

### Monitor Well Data

Number of monitor wells: 2  
Casing depth (feet bls):  
Casing material:  
Monitor zone interval:  
Total depth (feet bls):  
Distance from ASR well (feet):

### Hydrogeologic Data

Aquifer: Floridan  
Transmissivity (gpd/ft):  
Ambient chloride (mg/L): 1,000  
Ambient TDS (mg/L)

### Testing Data

Cycle #	recharge / storage / recovery (days)	recharge volume (mg)	recovery volume (mg)
1	162/123/44	80	19
2	215/98/82	129	35



## Lee - Regional WTP

Construction Completed:  
Started Operation: 1980  
Source Water: surface water  
Operator:  
Status: experimental/inactive

### ASR Well Data

Number of ASR wells: 1  
Casing diameter (inches):  
Casing depth (feet bls):  
Casing material:  
Total well depth (feet bls):  
Completion style:  
Well capacity (mgd):  
Specific capacity (gpm/ft):  
Average pumping rate (gpm):

### Monitor Well Data

Number of monitor wells: 2  
Casing diameter (inches):  
Casing depth (feet bls):  
Casing material:  
Monitor zone interval:  
Total depth (feet bls):  
Distance from ASR well (feet):

### Hydrogeologic Data

Aquifer: Floridan  
Transmissivity (gpd/ft):  
Ambient chloride (mg/L): 500  
Ambient TDS (mg/L): 1,520

### Testing Data

Cycle #	recharge / storage / recovery (days)	recharge volume (mg)	recovery volume (mg)
1	2/0/1.4	0.6	0.2
2	16/47/3	7	0.6
3	79/98/41	29	9



**Bonita Springs - San Carlos Estates**

Construction completed:  
 Started Operation: 1999  
 Source Water: potable  
 Status: operational testing

**ASR Well Data**

Number of ASR wells: 1  
 Casing diameter (inches):  
 Casing depth (feet bls): 660  
 Casing material: steel  
 Total well depth (feet bls): 700  
 Completion style: open hole  
 Well capacity (mgd):  
 Average pumping rate (gpm):

**Monitor Well Data**

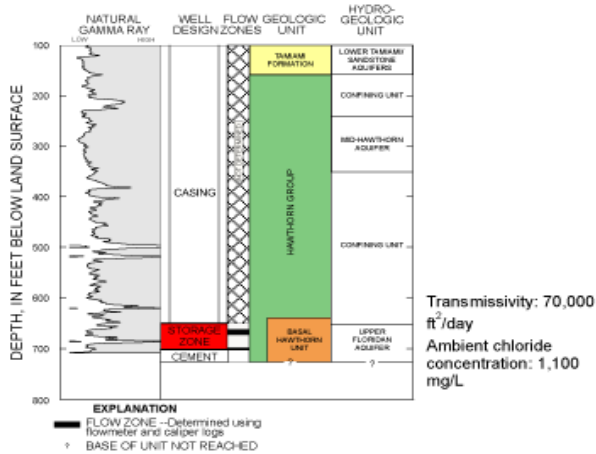
Number of monitor wells: 1  
 Casing diameter (inches):  
 Casing depth (feet bls):  
 Casing material:  
 Monitor zone interval:  
 Total depth (feet bls):  
 Distance from ASR well (feet):

**Hydrogeologic Data**

Aquifer: Floridan  
 Transmissivity (gpd/ft):  
 Ambient chloride (mg/L): 1,100  
 Ambient TDS (mg/L): 3,500

**Testing Data**

Cycle #	recharge / storage / recovery (days)	recharge volume (mg)	recovery volume (mg)
1	144/0/36	138	4
2	104/117/10	159	10





**Lee - Winkler Ave.**

Construction Completed:  
Started Operation: 2000  
Source Water: raw groundwater  
Operator:  
Status: constructed, but not operational

**ASR Well Data**

Number of ASR wells: 1  
Casing diameter (inches): 30  
Casing depth (feet bls): 760 - 765  
Casing material: steel  
Total well depth (feet bls): 1,200 - 1,300  
Completion style: open hole  
Well capacity (mgd):  
Specific capacity (gpm/ft): 52 - 71  
Average pumping rate (gpm): 3,500  
Notes: acidization

**Monitor Well Data**

Number of monitor wells:  
Casing diameter (inches):  
Casing depth (feet bls):  
Casing material:  
Monitor zone interval:  
Total depth (feet bls):  
Distance from ASR well (feet):

**Hydrogeologic Data**

Aquifer: Floridan  
Transmissivity (gpd/ft): 70,700 - 171,111  
Ambient chloride (mg/L):  
Ambient TDS (mg/L) 3,500

**Testing Data**

Cycle #	recharge / storage / recovery (days)	recharge volume (mg)	recovery volume (mg)
1	63/12/6	45	4.5

## **Miami-Dade Southwest Wellfield**

Construction Completed: 2000  
Started Operation: not yet  
Source Water: raw groundwater  
Operator: MDWASD  
Status: constructed, but not operational

### **ASR Well Data**

Number of ASR wells: 3  
Casing diameter (inches): 30  
Casing depth (feet bls): 760 - 765  
Casing material: steel  
Total well depth (feet bls): 1,200 - 1,300  
Completion style: open hole  
Well capacity (mgd):  
Specific capacity (gpm/ft): 52 - 71  
Average pumping rate (gpm): 3,500  
Notes: acidization

### **Monitor Well Data**

Number of monitor wells:  
Casing diameter (inches):  
Casing depth (feet bls):  
Casing material:  
Monitor zone interval:  
Total depth (feet bls):  
Distance from ASR well (feet):

### **Hydrogeologic Data**

Aquifer: Floridan  
Transmissivity (gpd/ft): 70,700 - 171,111  
Ambient chloride (mg/L):  
Ambient TDS (mg/L) 3,500

## Miami-Dade West Wellfield

Construction completed: 1998  
 Started Operation: 1999  
 Operator: MDWASD  
 Source Water: raw groundwater  
 Status: currently inactive

### ASR Well Data

Number of ASR wells:	1	2	3
Casing diameter (inches):	30	30	30
Casing depth (feet bls):	850	845	835
Casing material:	steel	steel	steel
Total well depth (feet bls):	1,302	1,250	1,210
Completion style:	open	open	open
Well capacity (mgd):	1-3	1-3	1-3

### Monitor Well Data

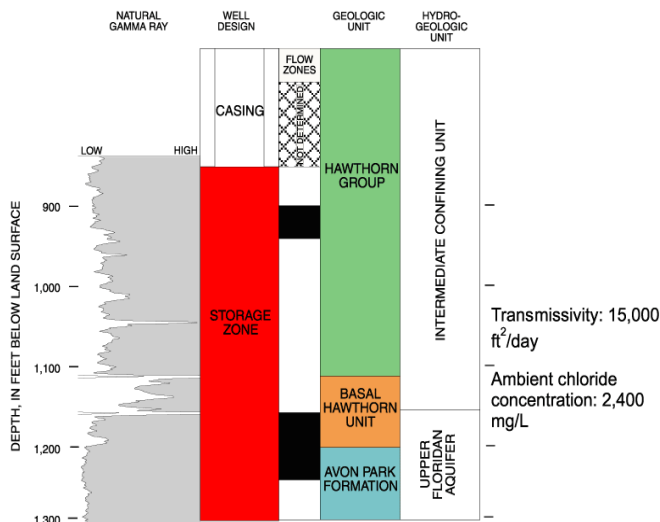
Number of monitor wells: 1  
 Casing diameter (inches): 2  
 Casing depth (feet bls): 855  
 Monitor zones depths: 855-1,010 and 1,350-1,396  
 Casing material: frp  
 Total depth (feet bls):

### Hydrogeologic Data

Aquifer: Floridan  
 Transmissivity (gpd/ft): 118,000  
 Ambient chloride (mg/L): 2,350  
 Ambient TDS (mg/L): 4,400

### Testing Data

Cycle #	recharge / storage / recovery (days)	recharge volume (mg)	recovery volume (mg)
1	146/0/7	360	28
2	187/0/12	212	53
3	299/18/85	338	359



## Boynton Beach East WTP

Construction Complete: 1991  
Started Operation: 1992  
Source Water: potable  
Operator: Boynton Beach  
Status: operating

### ASR Well Data

Number of ASR wells: 1  
Casing diameter (inches): 16  
Casing depth (feet bls): 804  
Casing material: steel  
Total well depth (feet bls): 909  
Completion style: open hole  
Well capacity (mgd): 1  
Specific capacity (gpm/ft): 13-17  
Average pumping rate (gpm): 1,000

### Monitor Well Data

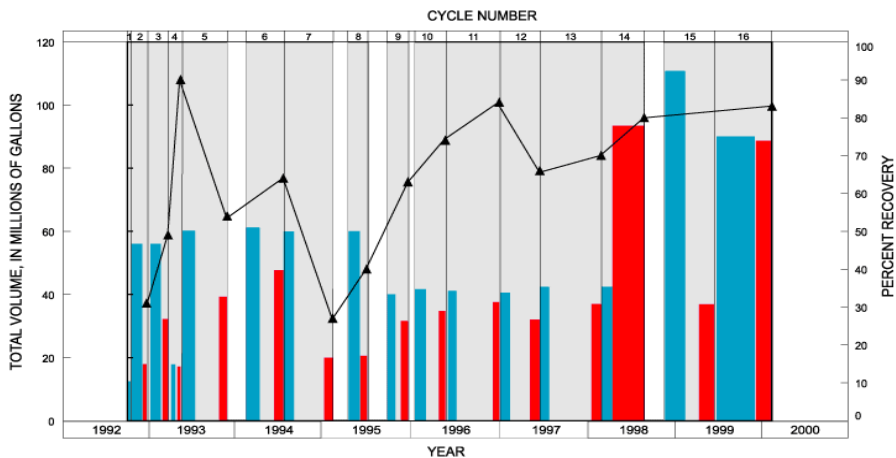
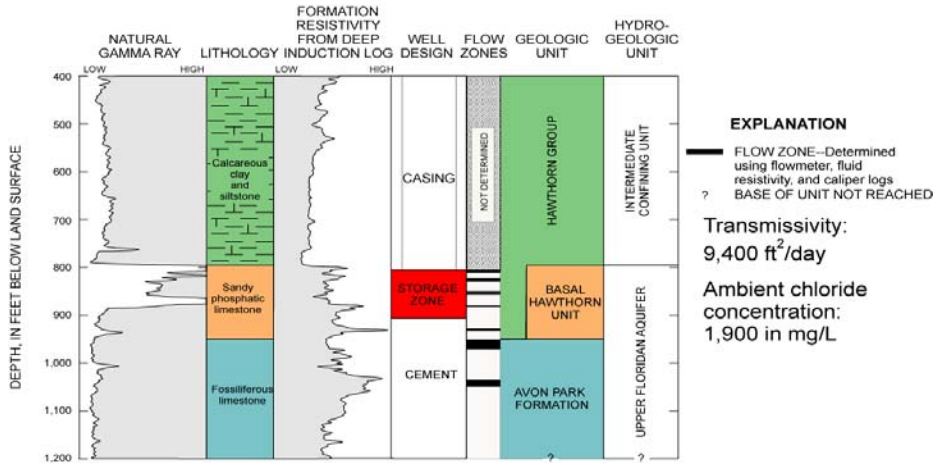
Casing diameter (inches): 4  
Casing depth (feet bls): 300  
Casing material: pvc  
Monitor zone interval:  
Total depth (feet bls):  
Distance from ASR well (feet): 50

### Hydrogeologic Data

Aquifer: Floridan  
Transmissivity (gpd/ft): 70,000  
Ambient chloride (mg/L): 1,920  
Ambient TDS (mg/L): 3,900

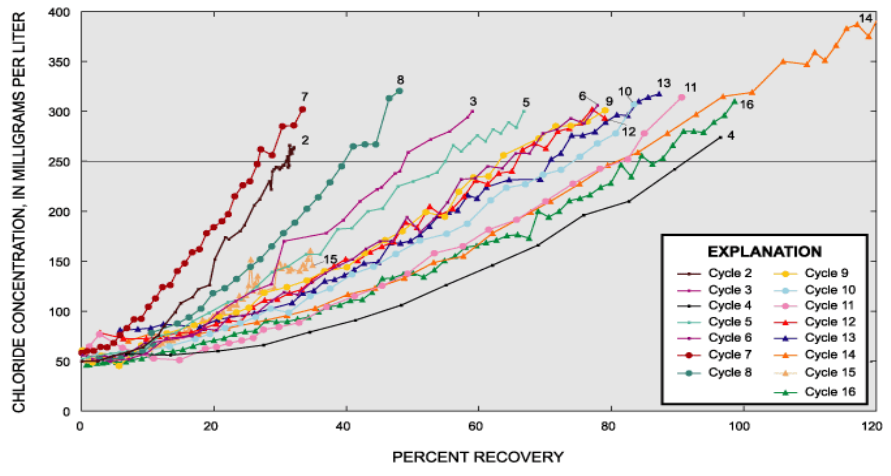
### Testing Data

Cycle #	recharge / storage / recovery (days)	recharge volume (mg)	recovery volume (mg)
1	4/0/8	12.5	9.6
2	44/0/31	57	26
3	43/5/25	58	32
4	16/8/14	18	17
5	55/98/34	60	39
6	55/57/39	61	48
7	44/124/35	60	20
8	46/2/26	43	20
9	33/22/29	40	32
10	46/52/27	42	35
11	34/149/27	41	37
12	42/81/41	41	32
13	35/174/40	42	37
14	45/1/131	33	95
15	83/57/62	110	38
16	156/4/67	90	89



**EXPLANATION**

- RECHARGE—Total volume during cycle
- RECOVERY—Total volume during cycle
- STORAGE PERIOD—Between recharge and recovery
- POTABLE WATER RECOVERY EFFICIENCY—For each cycle (percent recovery using limiting chloride concentration of 250 mg/L). Shown at the end of each cycle. Recovery for cycle 15 was 34 percent for an ending chloride concentration of 146 mg/L.



## Delray Beach North Reservoir

Construction complete: 1996  
Started Operation: 2000  
Source Water: potable  
Operator: Delray Beach  
Status: operational testing

### ASR Well Data

Number of ASR wells: 1  
Casing diameter (inches): 14  
Casing depth (feet bls): 1,016  
Casing material: steel  
Total well depth (feet bls): 1,200  
Completion style: open hole  
Well capacity (mgd):  
Average pumping rate (mgd): 2.7

### Monitor Well Data

Number of monitor wells: 0  
Casing diameter (inches):  
Casing depth (feet bls):  
Casing material:  
Monitor zone interval:  
Total depth (feet bls):  
Distance from ASR well (feet):

### Hydrogeologic Data

Aquifer: Floridan  
Transmissivity (gpd/ft):  
Ambient chloride (mg/L): 2,630  
Ambient TDS (mg/L) 4,500

### Testing Data

Cycle #	Start Date	recharge / storage / recovery (days)	recharge volume (mg)	recovery volume (mg)	chlorides (post-recovery)	recovery efficiency
1	May-00	21,110,18	63	50	225	79
2	Jan-01	18,4,17	50	47	225	94
3	Apr-01	19,0,0	50	0		
4	May-01	22,0,22	52	54	170	104
	Jun-01	15,0,0	20	0		
5	Jul-01	20,0,24	49	52	170	106
6	Aug-01	26,2,22	70	55	225	78
7	Oct-01	34,0,11	73	20	62	Na

**Palm Beach County - WTP 9/ Hillsboro Canal**

Construction Completed: 2003  
 Started Operation: 2004  
 Source Water: raw groundwater  
 Operator: PBCWUD  
 Status: cycle testing

**ASR Well Data**

Number of ASR wells: 1  
 Casing diameter (inches): 24  
 Casing depth (feet bls): 1,010  
 Casing material: steel  
 Total well depth (feet bls): 1,225  
 Completion style: open hole  
 Well capacity (mgd): 5  
 Specific capacity (gpm/ft): 24-35  
 Average pumping rate (gpm): 3,500  
 Notes: acidization

**Monitor Well Data**

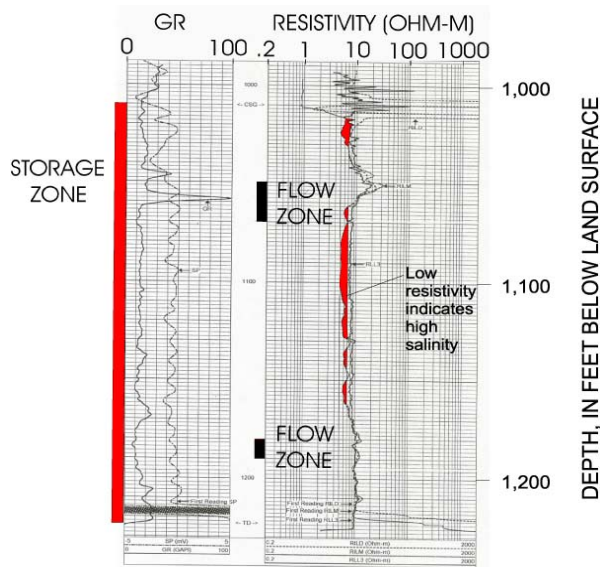
Casing diameter (inches): 6 5/8  
 Casing depth (feet bls): 1,005  
 Casing material: fiberglass  
 Monitor zone interval:  
 Total depth (feet bls):  
 Distance from ASR well (feet):

**Hydrogeologic Data**

Aquifer: Floridan  
 Transmissivity (gpd/ft): 142,000  
 Ambient chloride (mg/L): 2,100  
 Ambient TDS (mg/L): 4,400

**Testing Data**

Cycle #	recharge / storage / recovery (days)	recharge volume (mg)	recovery volume (mg)
1	97/13/10	470	50
2	91/6/35	308	178



## **PBCWUD - Southern Region Operations Center (SROC)**

Construction Complete: 1991  
Started Operation:  
Source Water: potable  
Operator: PBCWUD  
Status: pending initiation of cycle testing

### **ASR Well Data**

Number of ASR wells: 1  
Casing diameter (inches): 16  
Casing depth (feet bls): 1,065  
Casing material: pvc  
Total well depth (feet bls): 1,155  
Completion style: open hole  
Well capacity (mgd): 2-3  
Average pumping rate (gpm): 2,000

### **Monitor Well Data**

Casing diameter (inches):  
Casing material:  
Monitor zone interval (feet bls): 1,055 - 1,270  
Total depth (feet bls):  
Distance from ASR well (feet):

### **Hydrogeologic Data**

Aquifer: Floridan  
Transmissivity (gpd/ft):  
Ambient chloride (mg/L):  
Ambient TDS (mg/L)



**West Palm Beach Water Treatment Plant**

Construction Complete: 1997  
 Operator: West Palm Beach  
 Started Operation: 1997  
 Status: operational testing  
 Source Water: treated surface water

**ASR Well Data**

Number of ASR wells: 1  
 Casing diameter (inches): 24  
 Casing depth (feet bls): 985  
 Casing material: steel  
 Total well depth (feet bls): 1,200  
 Completion style: open hole  
 Well capacity (mgd): 8  
 Specific capacity (gpm/ft): 306 - 390  
 Average pumping rate (gpm):

**Monitor Well Data**

Casing diameter (inches): 12.75  
 Casing depth (feet bls): 975  
 Casing material: steel  
 Distance from ASR well (feet):

**Hydrogeologic Data**

Aquifer: Floridan  
 Transmissivity (gpd/ft): 1,032,253  
 Ambient chloride (mg/L): 2,800  
 Ambient TDS (mg/L): 5,056

**Cycle Test Summary**

Cycle #	recharge / storage / recovery (days)	recharge volume (mg)	recovery volume (mg)
1	93/0/17	271	40
2	40/1/22	110	46
3	37/3/28	103	58
4	53/3/36	143	73



## Monore County - Marathon

Construction Completed: 1990  
Started Operation: 1991  
Source Water: potable  
Operator: Florida Keys Aqueduct Authority  
Status: inactive

### ASR Well Data

Number of ASR wells: 1  
Casing diameter (inches): 16  
Casing depth (feet bls): 387  
Casing material: steel  
Total well depth (feet bls): 432  
Completion style: screen  
Well capacity (mgd): 0.25  
Average Pumping Rate:

### Monitor Well Data

Number of monitor wells:	1	2
Casing diameter (inches):	4	10
Casing depth (feet bls):	413-435	388-428
Casing material:	pvc	steel
Total depth (feet bls):		
Distance from ASR well (feet):	126	258

### Hydrogeologic Data

Aquifer: Sandstone  
Transmissivity (gpd/ft): 17,000  
Ambient chloride (mg/L): 20,800  
Ambient TDS (mg/L): 37,200

### Testing Data

Cycle #	recharge / storage / recovery (days)	recharge volume (mg)	recovery volume (mg)
1	17/0/19	4.5	5
2	43/34/11	10	3.4
3	27/0/16	5	4
4	14/0/10	3.6	2.7
5	51/39/26	15	6.5
6	56/36/43	15	8
7	56/35/30	16	9
8	76/21/34	15	10
9	54/0/44	15	10
10	56/35/31	15	8.6
11	63/81/25	14	10